



Water Space Study

Project Overview



Project Team Experience



Chepstow Flood Alleviation



Hereford Flood Alleviation



Project Team Experience

Three Mills Lock



Olympic Aquatic Centre



River Lee

18 February 2016

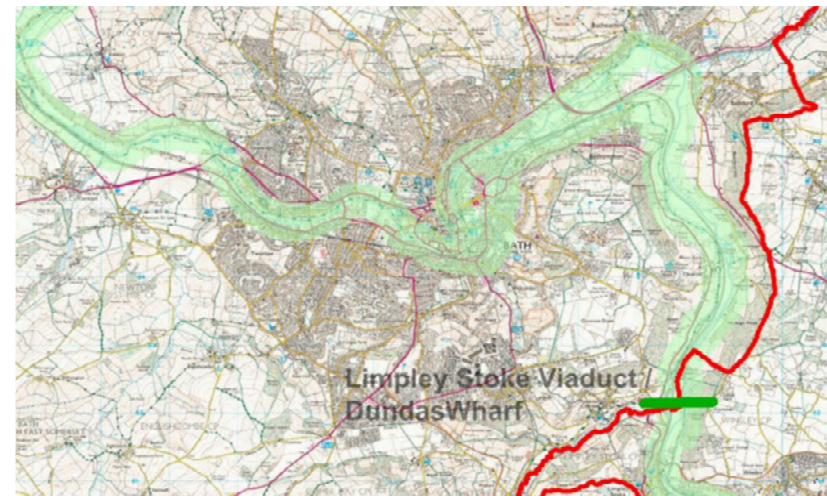
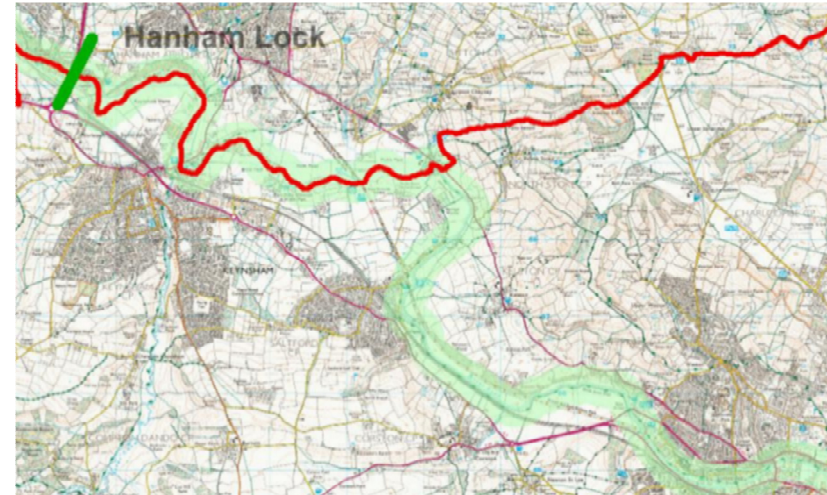


Study Area

Study focus area:

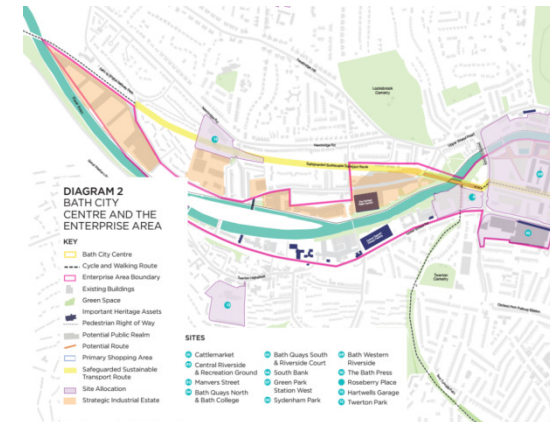
- Narrower through Bath
- Wider outside Bath and along the Canal – but lighter touch

This would not be a fixed line so other areas would also be considered.



Core geographic areas of focus

- Bath City Enterprise Area
- Within Bath 150m either side of banks as focus area
- Activity Hubs - Broadmead, Keynsham, Salford Marina/Mead Lane Salford, Newbridge etc.
- Other mainly rural areas/canal coverage to be given a lighter touch approach



Source:
https://c2.staticflickr.com/4/3124/2789202399_62164db982_z.jpg 5
?zz=1

Assets and asset management

Study Theme

- Client Organisations
- Partner Organisations
- Other private assets (e.g. sports facilities)
- Data review and gap analysis
- Consideration of demand/future need and opportunities
- River safety



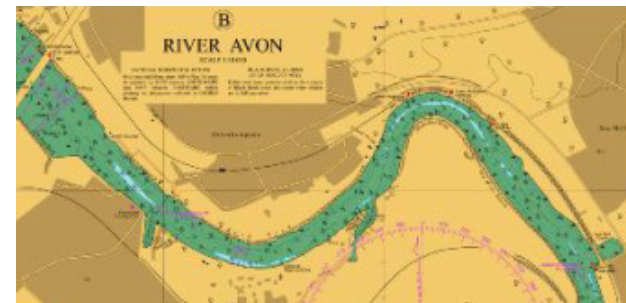
Mooring strategy and navigation

Study theme

- Policy focus
- Inform/input to B&NES Design SPD
- Common reference/standards for partners e.g. mooring detail
- Light touch boater and river users profiling, focus on needs
- Review: maximum canal capacity; canal capacity headroom; and canal to river capacity shift



Source: <http://www.castlemarinas.co.uk/marinas/nottingham>



Source: <http://www.visitmyharbour.com/harbours/bristol-channel/bristol/chart/E232B78C7EA92/river-avon-to-bristol-inc-docks-2012>

Regeneration & development

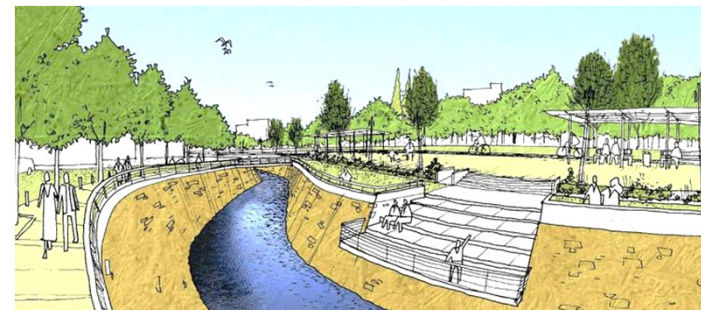
Study theme

- Options for River Avon linear park
- Weirs and locks
- Existing 'hot spots'
- Enhanced 'boat based' consumer opportunities
- Improve land based facilities and services
- Existing public/private sector proposals
- Geographic location and infrastructure mapping
- Constraints and safety mapping
- Potential mooring/marina locations

of concepts



Source: <http://inhabitat.com/how-the-cheongyecheon-river-urban-design-restored-the-green-heart-of-seoul/>



Source: <https://www.pinterest.com/pin/387731849140553934/>

Water quality and environmental enhancement

Study theme

- Review of existing Angling and Ad hoc Recreation use
- Potential pollution 'hot spots'
- Opportunities to enhance water quality
- Localised flood mitigation
- Cumulative loss of riverside trees
- Mitigation of impact on Bats (and other wildlife)



Source: <http://www.fishingbreaks.co.uk/planning.htm>



Source: <http://www.ywt.org.uk/events/2016/04/17/bat-ecology>

Recreation and leisure

Study theme

- Dragon Boats
- Canoeing, Rowing and hire boats
- Water taxi/boat trips
- Active travel routes, cycling and walking
- Commercial moorings
- Facilities and activity – café, pubs, restaurants etc.
- Slipways and river access



Source: <http://www.paddlepoints.net/Water.aspx?WaterType=4&WaterId=164>



Source: <http://greenworkspc.com/works/waterfronts/zidell-green-infrastructure/>

Draft Programme

Month	2016												2017		
	Jan	Feb	Mar	Apr	May	Jun	Jul	Aug	Sept	Oct	Nov	Dec	Jan	Feb	Mar
Part 1: Scoping and Evidence Base															
Scoping 1A and 1B- audit and gap analysis	1														
1C: Baseline mapping and evidence															
i. Land ownership mapping															
ii. Spatially tag funds (S106/RCF etc)															
iii. Map allocations, applications, improvements															
iv. Boater consultation and profiling															
Review meeting (inc. break clause)					2										
Part 2: Demand and opportunities															
Inception meeting/Consultation Feedback						3									
2A: Demand & need analysis															
2B: Spatial solutions															
2D: Development of Work Programme															
2E: Identification of funding mechanism															
Review meeting (inc. break clause)												4			
Part 3: Outputs															
Finalise Work Programme, including costs															
Finalise detailed maps															
Produce final report															
Draft report															
Final report and briefing to Strategic River Group															5
Public /Stakeholder Consultations															
Stakeholder workshops						C1						C2			
Public engagement						A						B			
Quarterly meetings with Strategic River Group	□			*			*					*			
Regular updates with Project Steering Group	◆	◆	◆	◆	◆	◆	◆	◆	◆	◆	◆	◆	◆	◆	◆

Meetings

- 1 - Inception meeting
- 2 - Part 1: Review meeting with client

- 3 - Part 2: Inception meeting
- 4 - Part 2: Review meeting
- 5 - Part 3: Briefing to Strategic River Group

Consultation events

- A – Linked with Festival of Nature
- B – Consultation on outputs – provisional
- C – Stakeholder workshops

Consultation and engagement

- Partners have agreed a communications protocol – today's launch is the 1st joint press release
- Stakeholder and Public Consultation to be undertaken through the year. To include:
 - Newsletter
 - Webpage
 - Stakeholder Meetings/Workshops
 - Citizen Science (ecology)
- Bristol to Bath Festival of Nature 2016 (10-25 June) focus for public events - themed river walks/maps, art events and open studio event
- Strategy for effective Boater engagement being developed



Study outputs

Key elements

- Primary data collected
- Secondary baseline data collated
- Maps and Plans
- Design concepts and development/project ideas
- Options explored with key stakeholders and the public
- Priority projects scoped
- Funding options explored/identified



Source:
http://www.bustler.net/index.php/article/mandaworks_and_hosper_sweden_win_floda_city_center_competition



Source: <http://www.bristoltemplequarter.com/about-the-zone/>