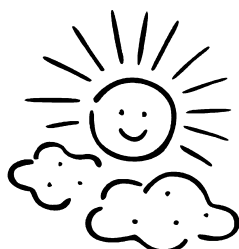


Summer Activities Booklet 2013



Bath and North East Somerset Council
Family Information Service 0800 073 1214





Summer Booklet 2013

	Page
<u>Days out</u>	3
<u>Leisure Centres</u>	16
<u>Libraries</u>	26
<u>Museums</u>	29
<u>National Trust Activities</u>	38
<u>Open play opportunities</u>	40
<u>Youth Activities</u>	44
<u>Parks and play areas</u>	46
<u>Summer Schemes for Children and Young People with Additional Needs</u>	50
<u>Specialist Summer schools</u>	54
<u>Children's Centres</u>	64
<u>One Off Events</u>	67

Free activities are indicated with the free logo



Free

Keynsham and Chew Valley area

Avon Valley Country Park, Pixash Lane, Keynsham, Bristol, BS31 1TP

Tel: 0117 9864929

www.avonvalleycountrypark.com

Open every day 10am - 6pm

Wheelchair access.

Adventure playground, animals, falconry, miniature railway boating, picnic area and riverside trail, indoor play barn, cafés and toilets. Children under 2 go free.

Avon Valley Railway, Bitton, Bristol, BS30 6HD

Tel: 0117 9325538

www.avonvalleyrailway.org

Open Tuesday, Wednesday, Thursday, Saturday and Sunday during August.

Trains run from 11am to 5pm (Bank Holiday weekend open Saturday through to Tuesday).

Under 5s go free.

Limited wheelchair access, but one carriage accessible to wheelchairs.

Please ring: 0117 9325538

Teddy Bears' Picnic – 22nd September

Children who bring their Teddy Bear ride free, their Adults will be charged £7.

Avon Wildlife Trust

Tel: 0117 9177270

www.avonwildlifetrust.org.uk

Free

Open days and times vary according to venue.

Please ring for details. Wheelchair access at some venues, please check.

Events across the area: <http://www.avonwildlifetrust.org.uk/people/events.htm>

Local sites:

Folly Farm, Stowey, Pensford, Bristol, BS39 4DW

Willsbridge Mill Nature Reserve, Willsbridge, Bristol BS30 6EX

Chew Valley Country Park, Trevesa, Chew Hill, Chew Magna, Bristol, BS40 8SB

Tel: 07711 893964

www.chewvalleycountryfarm.co.uk

An 8 acre animal walkway with a small playground, go karts for older children and a farm shop.

Open Tuesday - Friday, 10am - 5pm and Weekends 10am - 4pm

Admission to the park and shop is free, but there is a charge for the animal walkway. Under 3s go free.

**Hamburger Hill – Bristol Outdoor Pursuits, Common Wood, Hunstrete,
Bristol, BS39 4NT**

Tel: 0800 980 3980

www.hamburgerhill.co.uk

Outdoor activities including: Paintballing (ages 12 and up), Children and adult quad biking (minimum age 8 years) and laser combat games (ages 7 and up).

**Horse World, Staunton Lane, Whitchurch, Bristol,
BS14 0GJ**

Tel: 01275 540173

www.horseworld.org.uk

Open every day 10am - 5pm.

Fully accessible.

Children under 3 go free

Craft Fun Days - 3rd and 17th August (Standard admission applies)

Meet the gentle giants - 14th September

A selection of heavy horses will be on show at the visitor's centre. (Standard admission applies)

Behind the scenes tour – 21st September

A unique visit behind the scenes of Horseworld for over 12s. Tickets must be purchased in advance through the website or by contacting the above telephone number.

Bath and Surrounding area

Bath Tourist Office, Abbey Chambers, Bath

Tel: 0906 7112 000 (50p/minute)

For details of events throughout the year please ring or visit:

www.visitbath.co.uk

Barton Farm Countryside Park, Bradford on Avon,

Tel: 01225 713489

www.wiltshire.gov.uk/leisureandrecreation/parksandopenspaces/countryparks.htm?ac=show&cp=CP_BART

Open every day dawn till dusk.

Free

Bath Abbey, Bath, BA1 1LT

Tel: 01225 422462

www.bathabbey.org

Open 9.30am - 6pm Mondays and 9am - 6pm Tuesday - Saturday. Open 1pm - 2.30pm and 4.30pm - 5.30pm

Suggested £1 donation for children and £2.50 per adult.

Tower Tours (behind the scenes) available on the hour (Monday - Friday) and every half an hour on a Saturday. Children must be 5 or over.

Adults £6 and children 5 - 15 years £3.

Bath Aqua Theatre of Glass, 105-107 Walcot Street, Bath, BA1 5BW

Tel: 0225 428146

www.bathaquaglass.com/bath-visitor-attraction.html

Glass blowing demonstrations Monday - Friday at 11.15am and 2.15pm and Saturdays at 2.15pm.

Children under 5 years go free.

Bath Boating Station, Forrester Road, Bath, BA2 6QE

Tel: 01225 312900

www.bathboating.co.uk

A Victorian boating station with rowing boats, Canadian canoes and kayaks available for hire by the hour or all day.

Open 10am - 6pm daily.

Under 5s go free, buoyancy aids are provided.

Bath City Farm, Kelston View, Bath, BA2 1NW

Tel: 01225 481269

www.bathcityfarm.org.uk

No charge, but donations requested. The farm is accessible through the gates and over stiles around the site. The car park is open from 9am - 5pm Monday - Saturday. There is a café and farm shop on site.

Bike Hire, Green Park Bike Station, Green Park Road, Bath, BA1 1JB

Tel: 01225920148

www.greenparkbikestation.com

Full-day and half-day hire available. Open 9.30am - 5.30pm

Bowood House, Calne, Wiltshire, SN11 0LZ

Tel: 01249 812102

www.bowood.org

Open every day from 20th March 11am - 6pm.

Wheelchair accessible.

Large adventure playground, soft play palace, historic house, gardens, restaurant, gift shop and garden shop.

**Canal Visitor Centre, Brassknocker Basin, Monkton Combe,
Bath, BA2 7JD**

Tel: 01225 722292

www.bathcanal.com

Free

Narrowboat, electric boat, canoe and bike hire (charges apply). Café, toilets and canal walks. Visit the famous Dundas Aqueduct. Free to visit, but car parking charges apply.

Corsham Court, Corsham, Bath, SN13 0BZ

Tel: 01249 712214

www.corsham-court.co.uk

Open every day (except Monday and Friday)

March- 30th Sept 2pm - 5.30pm

October - March 2pm – 4.30pm (and Bank Holidays)

Farleigh Hungerford Castle, Norton St Philip, Bath, BA2 7RS

Tel: 01225 754026

www.english-heritage.org.uk/daysout/properties/farleigh-hungerford-castle

Open 29th March - 30th September 10am – 6pm.

A 14th century castle based in beautiful countryside.

Farringtons, Home Farm, Main Street, Farrington

Gurney, Bristol, BS39 6UB

Tel: 01761 452266

www.farringtons.co.uk

Café, farm shop, shopping village and Cowtastic Farm Park.

Farm park open Monday - Friday 10am - 7pm and Saturdays and Sundays

9am - 5pm.

Franks Farm, Wellow, Bath, BA2 8QF

Tel: 01225 834376

www.wellotrekking.com/activities/franksfarm.html

Open every day 10am – 5.30pm.

Riding, quad biking, farm, play area, trekking centre and specially adapted riding for disabled children, young people and adults.

Longleat Safari Park, Warminster, BA12 7NW

Tel: 01985 844400

www.longleat.co.uk

Open every day March – November, opening times vary, please call or check website. Wheelchair access to most areas.

River Avon cruises:

Bath City Boat Trips

Tel: 01225 480541

www.bathcityboattrips.com/

The Pulteney Princess

Tel: 07791 910650

<http://www.pulteneyprincess.co.uk/>

Stonehenge, Amesbury, Wiltshire, SP4 7DE

Tel: 0870 333 1181

www.english-heritage.org.uk/daysout/properties/stonehenge/

Learn about the stones and how the structure was built.

Open June - 31st August 9am - 7pm

Children under 5 years go free.

The Hope Nature Centre, Southwick Country Park, Frome Road,

Southwick, Near Trowbridge, BA4 9QD

Tel: 01225 759075

www.hopenaturecentre.org.uk

Open daily 10am - 4.30pm

Open to the public for a small donation. Animals, (including alpacas, donkeys and Shetland ponies and smaller animals such as chickens, geese and rabbits). Nature trails, train, café and shop and a fairy wood (a mythical and fantasy area).

The Peto Garden, Iford Manor, Bradford-On-Avon, Bath, BA15 2BA

Tel: 01225 863146

www.ifordmanor.co.uk

Open every day 2pm - 5pm, except Monday and Friday with the exception of Bank Holidays. Limited wheelchair access. Accompanied children under 10 years go free.

Bristol Area

Bristol Tourist Office: 0906 711 2191

Ring for details of events and days out throughout the year or visit:

www.visitbristol.co.uk

Ashton Court Estate, Long Ashton, Bristol, BS41 9JN

Tel: 0117 9639176

www.ashtoncourtmanor.co.uk/facilities&prices

Grade II listed landscape offering woodlands, formal gardens, cycle and horse trails and open space.

Visitor's centre available Wednesday to Sunday 10am - 3pm. Parking charges apply. Grounds open 8am - 9.15pm.

Toilets and café available.

www.bristol.gov.uk/EventViewer

Teddy Bear's Picnic - 25th August - Follow a trail to find a teddy. Bring a picnic and enjoy a story and craft. £5 cost for children aged 3 + with an accompanying adult.

Free

Miniature Railway, Ashton Court Estate, Bristol

www.bristolmodelengineers.co.uk/ashton-court-railway

Train Information 0117 9467110

Trains: 14th and 28th July, 25th and 26th August and 8th, 22nd and 29th September 12noon – 5pm.

Charges for train rides

No wheelchair access on train.

@ Bristol, Anchor Road, Harbourside, Bristol, BS1 5DB

Tel: 0845 345 1235

Visit: www.at-bristol.org.uk

Open 10am - 5pm weekdays and 10am - 6pm weekends and school holidays.

Children 0 - 2 years go free.

Fully accessible.

Summer Night's Sky Planetarium Show

18th June – 15th September

A planetarium show (not suitable for the under fives) An additional £1 to entry price or free for members.

Gromit Unleashed - Bring Gromit to life! Make your own Gromit, play Wallace and Gromit games and create an animated adventure. For more information about Gromit Unleashed, please see page 82.

Bristol Aquarium Millennium Square

Tel: 0117 929 8929

www.bristolaquarium.co.uk

Open daily from 10am – 5pm

Children under 3 go free

Fully accessible.

Bristol Blue Glass, 357-459 Bath Road, Bristol, BS4 3EW

Tel: 0117 9720818

www.bristol-glass.co.uk

Free entry to shop and glassmaking.

Free

Bristol Cathedral, College Green, Bristol, BS1 5TJ

Tel: 0117 9253678

www.bristol-cathedral.co.uk

Open from 8am until after Evensong service. Admission is free, but donations are welcomed.

Free

**Bristol Climbing Centre, Undercover Rock, Bristol
Climbing Centre, Mina Road, St Werburgh's, Bristol, BS2 9YT**

Tel: 0117 9083491

www.undercover-rock.com/default.aspx

Open 9.30am - 10pm on weekdays and 9.30am - 6pm at weekends and Bank Holidays. Learn to climb indoors. Sessions available for 6 - 10 and 10 - 15 year olds.

Bristol Zoo, Clifton, Bristol, BS8 3HA

Tel: 0117 9747399

www.bristolzoo.org.uk

Open every day 9am - 5.30pm in the summer

Free for children under 2 years.

Fully accessible.

Dino Zoo 2 - Discover the new breed

23rd March – 8th September

There will be once again 12 huge and animatronic dinosaurs will be placed around the Zoo.

www.bristolzoo.org.uk/dinozoo

Avon Gorge and Wildlife Project

Tel: 0117 9030609

www.avongorge.org.uk

Holiday workshops for 8-12 year-olds, £8.50 per child/session, 10am - 3.30pm:

1st August - Animal adventures

8th August - Wild works of art

15th August - Ladybird spotters

Sightseeing tours in the Bristol docks:

Bristol Ferry Boat Company

Tel: 0117 273416

www.bristolferry.com/index.php

The Bristol Packet

Tel: 0117 9268157

www.bristolpacket.co.uk

**Hartcliffe Community Park Farm, Lampton Farm, Hartcliffe, Bristol,
BS13 0QH**

Tel: 0117 9782014

<http://hartcliffefarm.org/>

Open Monday - Friday 9am - 5pm, Saturday and Sunday 9am - 4pm. Free entry, but goods available to purchase.

Free

JUMP, 22 Concorde Way, Cribbs Causeway, Bristol, BS34 5TB

Tel: 0117 9312733

www.123jump.co.uk/our-bristol-site

Giant indoor soft play centre

Adults free, babies under 1 free with a full paying sibling.

Old Down Country Park, Foxholes Lane, Tockington, BS32 4PG

Tel: 01454 414081

www.olddowncountrypark.co.uk

Open 10am – 6pm every day.

Activities include animals, woodland and forest walks and an adventure playground. Café and farm shop available.

Children under 2 years go free.

Wheelchair accessible.

S.S. Great Britain, Gas Ferry Road, Bristol, BS1 6TY

Tel: 0117 9260680

www.ssgreatbritain.org

Open 10am – 5.30pm,
Children under 4 years go free.
Fully accessible.

Crew do you think you are - Daily activities for the whole family. Choose an activity wheel and try out crew challenges as you explore the ship.

Crew talks - Every Wednesday and Saturday, discover what sailors did for work and play; find out about the tasks they performed, what living conditions were like on board and what sailors did with their free time.

Flash, Bang Wallop! -
Travel back in time, and around the world, to pose for a portrait in the Melbourne photographic studio. You can dress up in stovepipe hats, bonnets and crinolines.
Using your own camera you can create unique 'holiday snaps'. Daily 10am - 5:30pm

See Hear Storytelling - 6th August and 3rd September -
Pre School maritime tales about whales, angel fish, pirates and stormy seas.
Just turn up on the day!

Free

Tyntesfield, Bristol, BS48 1NT

Tel: 01275 461900

www.nationaltrust.org.uk/tyntesfield

Estate open 10am - 6pm
Victorian mansion with gardens/grounds.
Open every day in August.

**St Werburghs City Farm, Watercross Road, Bristol,
BS2 9YJ**

Tel: 0117 9428241

<http://s344054061.websitehome.co.uk>

Open every day 9am - 5pm

Free

Windmill Hill Farm, Bedminster, Bristol, BS3 4EA

Tel: 0117 9633252

www.windmillhillcityfarm.org.uk/home.html

Open daily 9am - 5pm.
Donations gratefully received.
Wheelchair accessible.

Free

Gloucestershire area

**Berkeley Castle, Canonbury Street, Berkeley,
Gloucestershire, GL13 9PJ**

Tel: 01453 810303

www.berkeley-castle.com

Castle, gardens and butterfly house.

Open 11am - 5pm Sunday - Wednesday (Castle is closed Thursday, Friday and Saturday for private functions).

Children under 3 years go free.

Limited access for wheelchairs

Cattle Country, Berkeley Heath Farm, Berkeley, GL13 9EW

Tel: 01453 810510

www.cattlecountry.co.uk

Open 10am - 5pm daily

Attractions include designated indoor and outdoor play areas and specific areas for toddlers, a jumping pillow and trampolines, boating lake, climbing net, outdoor assault course, mini golf, outdoor splash pool and a picnic/barbecue area. Children under 2 years go free.

Extra costs apply for the mini train, tractor ride, archery, arts and crafts and coin operated attractions.

Dyrham Park, near Bath, South Gloucestershire, SN14 8ER

Tel: 0117 9372501

www.nationaltrust.org.uk/dyrham-park/visitor-information

17th century house, with grounds including a picnic and play area and also a deer park. Free children's tracker pack available with compass to help with bug-hunting, identifying trees and locating deer (£5 refundable deposit).

Open every day in August.

Limited access for wheelchairs.

Slimbridge, Gloucestershire, GL2 7BT

Tel: 01453 891900

www.wwt.org.uk/visit/slimbridge

Open daily 9.30am - 5.30pm.

Wildfowl and Wetlands Trust site, based along the banks of the River Severn. Guided walks take place daily and are included in the entrance price. Children under 4 years go free. Land Rover Safaris available on weekends at an extra cost. Canoe Safaris available daily at an extra cost. Children and young people under 18 years must be accompanied by an adult.

Wheelchair accessible.

Westonbirt Arboretum, Tetbury, GL8 8QS

Tel: 01666 880220

www.forestry.gov.uk/westonbirt

Open every day 9am – 8pm (8am weekends).

Disabled access - wheelchairs may be booked in advance.

Children go free 20th July - 1st September

Tree Fest - 24th - 26th August

Family activities, local music, food and over 100 exhibitors.

Somerset area

Animal Farm Adventure Park, Red Road, Berrow, TA8 2RW

Tel: 01278 751628

www.animal-farm.co.uk/index.htm

Open every day 9am - 6.30pm.

Children under 2 years go free. A giant indoor playbarn, Cuddle Clubs, farm animals, pets & exotic animals, outdoor play, free rides, bouncy castle and crazy golf. Disabled access.

Special events for 2013 include:

Scooby-Doo - 27th and 28th July

Fireman Sam and Naughty Norman- 30th, 31st July and 1st August

Thomas the Tank Engine and The Fat Controller - 3rd and 4th August

Tree Fu Tom - 6th, 7th and 8th August

Peppa Pig and George - 10th and 11th August

Mike the Knight - 13th, 14th and 15th August

Postman Pat and Jess the Cat - 17th and 18th August

Moshi Monsters - 20th, 21st and 22nd August

Ben and Holly - 24th, 25th and 26th August

Octonauts - Captain Barnacles and Kwazii - 27th, 28th and 29th August

Bob the Builder - 31st August and 1st September

Brean Down Bird Garden, Brean Down, TA8 2RS,

Burnham on Sea

Tel: 01278 751209

www.burnham-on-sea.co.uk/brean_bird_garden

Open daily 10am – dusk

Brean Leisure Park and Splash Waterpark, Coast Road, Brean, TA8 2QY

Tel: 01278 751595

www.brean.com

Open March - October 10.30am - 9.30pm

Disabled access.

Brean Splash Waterpark

Tel: 01278 752113

www.brean.com/pool

Open daily 10am - 6pm with occasional inflatable evening sessions. Contact for specific opening times.

Butlins (for the Day), Minehead, TA24 5SH

Tel: 0845 070 4772

www.butlins.com/day-visits/minehead/index.aspx

Available on various days, please ring for more information

Family tickets available.

Cheddar Caves, Cheddar, BS27 3QF

Tel: 01934 742343

www.cheddarcaves.co.uk

Open 10am - 5.30pm.

Entrance ticket includes: 2 sets of caves, museum entry and an open top tour bus ride. Accessibility chart available online.

Children under 5 years go free.

Cheddar Gorge Cheese Co. Cheddar, BS27 3QA

Tel: 01934 742810

www.cheddargorgecheeseco.co.uk/index.html

Open every day. Visitor's centre/dairy open 10am – 3.30pm

Disabled access

Maximum of 2 children under 16 years free with a paying adult.

Court Farm Country Park, Wolvershill Road, Banwell,

Weston-super-Mare, BS29 6DL

Tel: 01934 822383

www.courtfarmcountrypark.co.uk

A family run farm attraction with animals and play facilities.

Open 10am - 5.30pm

Children under 3 years go free.

Grand Pier, Marine Parade, Weston-Super-Mare, BS23 1AL

Tel: 01934 620238

www.grandpier.co.uk

Indoor theme park with rides and attractions for all ages. Open 364 days of the year opening at 10am. Closing times will vary.

Sci Fi Weekend Strikes Back 7th September 10.30am - 4.30pm Meet characters from Doctor Who and Star Wars.

Noah's Ark Farm, Wraxall, Bristol, BS48 1PG

Tel: 01275 852606

www.noahsarkzooofarm.co.uk

Open Monday - Saturday 10.30am – 5pm

Disabled access.

Children under 2 years go free.

Fully accessible

Mendip Snowsport Centre, Lyncombe Drive, Churchill, BS25 5PQ

Tel: 01934 852335

<http://mendipsnowsport.co.uk>

Slope opening hours:

Monday, Wednesday and Friday, 10am - 8pm

Tuesday and Thursday 10am - 6pm

Saturdays and Sundays 9.30am – 6pm.

Charges vary according to activities including:

skiing, snowboarding, tobogganing, climbing, abseiling, archery, caving, an assault course, kayaking and open canoeing.

Puxton Park, Hewish, Weston-Super-Mare, BS24 6AH

Tel: 01934 523500

www.puxton.co.uk

Open every day 9am - 5.30pm (9.30am - 5.30pm Sun)

Indoor Play Barn (soft play for under 3s), outdoor play area,

falconry centre, pets village, farm animals, pony rides, dairy farm and farm shop. Children under 3 years go free.

Seaquarium, Marine Parade, Weston-super-Mare, BS23 1BE

Tel: 01934 613361

www.seaquarium.co.uk/weston.php

Open daily 10am – 5pm

An opportunity to see the depths of the oceans with over 30 displays of sea life.

Children under 3 years go free.

Somerset Lavender, Horsepond Farm, Faulkland, Somerset, BA3 5WA

Tel: 01373 834893

www.somersetlavender.com

Open 10am - 5pm Wednesday to Sunday and Bank Holiday Monday. There is a farm walk, small animals, café and shop available.

Wookey Hole Caves, Wookey Hole, Wells, Somerset, BA5 1BA

Tel: 01749 672243

www.wookey.co.uk

Open everyday 10am – 5pm

Attractions include: cave tours, a play barn, museum, fairy garden, dinosaur valley, Wookey Circus, clown museum, penny arcade, handmade paper mill and Pirate Island Golf. Children under 3 years go free.

Disabled facilities available; however, no access to caves.

Leisure Centres

The following facilities are available within Bath & North East Somerset and the surrounding areas.

Bath and Surrounding Area

**Bath Sports & Leisure Centre,
North Parade Road, Bath, BA2 4ET**

Tel: 01225 486905

www.aquaterra.org/bath-sports-and-leisure-centre

See website for daily swimming timetable. Under 2s swim free.

Swimming courses:

Beginners Courses

Sessions run Monday to Friday from 9am - 9.30am and 9.30am - 10am.

Improvers Courses

Sessions run Monday to Friday from 8.30am - 9am. Children must be able to swim 15 metres on front crawl and backstroke.

Holiday Camps

Sessions are supervised by sports coaches or stewards. Activities include swimming, football, basketball, rounders, quick cricket, team games, and DVDs. These holiday camps run weekdays from the 23rd July - 30th August, 9am till 4pm for 8 - 15 years. Please telephone reception on 01225 486905 or visit the centre.

Inflatable Sessions

The Dual Lane AquaRun inflatable will be available in the main pool on Wednesdays 2.30pm - 3.30pm, Fridays 6pm - 7pm, Saturdays 4pm - 5pm and Sundays 3.30pm - 4.30pm. Prices: £3.20 (standard), £2.80 (members) and £2.20 (member concessions).

Leisure pool and waterslides open sessions

23rd July – 31st August

Monday - Thursday 12.30pm – 4pm and 6pm – 8.30pm

Fridays 12.30pm – 4pm and 5.30 – 8.30pm

Saturdays 10am - 5pm

Sundays 8.30am - 6.30pm

Leisure pool for parent/guardians and babies

Exclusive session with music, for guardians and under 5s.

Pool temperature 30° – 32°C.

Mondays 10.30am – 12.30pm

Culverhay Sports Centre, Rush Hill, Bath, BA2 2QL

Tel: 01225 480882

www.aquaterra.org/culverhay-sports-centre

See website for daily swimming timetable. Under 2s swim free.

Swimming courses

Lessons available for children under 4 and children 4 - 17 years. Sessions run

Mondays 4pm - 5.30pm and Tuesday and Wednesday 4pm - 6pm.

Inflatable Sessions

Join in the fun on the Dual Lane AquaRun inflatable for children 8 years +. The inflatable will be available on

Fridays between 4.30pm and 6pm. Price: £3.20 (standard), £2.80 (members) and £2.30 (member concessions).

Keynsham Leisure Centre, Temple Street, Keynsham, Bristol, BS31 1HE

Tel: 01225 395164

www.aquaterra.org/keynsham-leisure-centre

See website for daily swimming timetable. Under 2s swim free.

Swimming

Beginners Courses

Sessions run Monday to Friday from 8.30am - 8.55am and 9am - 9.25am

Beginners Courses (For children who can swim 5m -10m).

Sessions run Monday to Friday from 9.30am - 9.55am

Children who can swim 25 metres

Sessions run Monday to Friday from 10am - 10.25am

Holiday Camp Programme

For ages 8 - 14 years to get fit, have fun, and make new friends in a safe environment with trained instructors. Camp runs daily from 8.30am till 4pm.

Activities include 'Commando Run' inflatable, Zany Zone, swimming, rounders, football, cricket, athletics, dance team games, DVDs and more!

Wear sportswear and take a packed lunch and swimwear every day. Booking is required.

1 day price: standard £13, members £11 and member concessions £8

5 day price: standard £52, members £44 and member concessions £32.

Inflatable sessions

Join in the fun on the Commando Run Inflatable. Children must be able to swim 25 metres. Sessions available for up to 15 years. Sessions run Wednesdays 2pm - 3.45pm and Sundays 4pm - 5pm Price: £3.20 (standard), £2.80 (members) and £2.30 (member concessions).

Adult and child sessions

A casual fun-packed session with qualified tuition. Toys and informal play activities to help build water confidence. Maximum age 5 years.

Thursdays 11.15am – 12.15pm (An all year round session)

**South Wansdyke Sports Centre, Rackvernal Road,
Midsomer Norton, BA3 2UG
Tel: 01761 415522
www.aquaterra.org/south-wansdyke-sports-centre**

See website for daily swimming timetable. Under 2s swim free.

Swimming courses

Beginners Courses

Sessions run Monday to Friday from 9am - 9.25am and 9.30am - 9.55am.

Improvers Courses

Sessions run Monday, Wednesday, Thursday and Friday from 10am - 10.30am.

Holiday Camps

All day, half day and weekly camps for ages 8 - 15 years from the 23rd July to 30th August. Sessions are supervised by sports coaches or stewards. Activities include swimming, football, basketball, rounders, squash, street dance, inflatable pool session, team games, a treasure hunt and DVDs. These holiday camps run weekdays, 8.30am till 4.30pm.

Inflatable Sessions - Eliminator

Sessions run on Mondays and Wednesdays and Fridays 1.30pm - 2.30pm.

Open to children up to 15 years.

Price: £3.20 (standard), £2.80 (members) and £2.30 (member concessions).

Toys and floats

Bring your own toys and floats for this fun session.

Fridays 6pm - 7pm.

Soft Play:

Zany Zone Bath Sports and Leisure Centre

For ages 10 years and younger to play in a safe environment.

Toddler sessions

10am - 11am Mondays, Wednesdays & Fridays (school holidays)

9am - 10.30am Saturdays & Sundays

Open sessions

11am - 5pm Mondays, Wednesdays & Fridays (school holidays)

10am - 5pm Tuesdays & Thursdays

10.30am - 3.30pm Saturdays & Sundays

South Wansdyke Sports Centre

For ages 1 - 8 years and children under 1.47m in height to play in a safe environment.

9am - 8pm Weekdays excluding Tuesdays

9am - 6pm Tuesdays

9am - 7pm Saturdays

9am - 8pm Sundays

Writhlington Sports and Leisure

Knobsbury Lane, Writhlington, Radstock

Tel: 01761 438559

www.writhlingtonsportscentre.co.uk

Go Bananas

The centre is open from 9.00am - 8.00pm Monday to Friday and 9.00am - 4.00pm Saturday and Sunday. The soft play area will close at 3.30pm on Saturday and Sunday where a private party has been booked. There is a separate toddlers zone which caters for children from crawling to 3 years as well as the main section which caters for children from 4 to 10 years. Children must be under 1.48m (4'10") in height. Children must be accompanied and supervised throughout by an adult who is 18 or over.

Babies 0 - 6 months go free.

**Baskerville's Gymnastics and Fitness Centre,
Englishcombe Court, Englishcombe Lane, Bath, BA2 2EJ
Tel: 01225 330001**

www.baskervillesgym.co.uk

Gym Tots (3 years & under) - Pre booking required
Friday 2nd, 9th, 16th, 23rd and 30th August
(9.30am - 10.15am)

Drop-in sessions:

Sunday Softplay (5 years & under)
Running every Sunday (except 14th July)
9.15am - 10.30am
10.30am - 11.45am

Jungle Gym (8 years & under)
Monday 29th, 5th, 12th and 19th August
(9.30am - 3pm)
Friday 2nd, 9th, 16th, 23rd and 30th August
(12.30pm - 3pm)

Gymfun (3 years & under)
Friday 2nd, 9th, 16th, 23rd and 30th August
(10.30am - 12noon)

**Whitchurch Sports Centre, Bamfield Road, Whitchurch, Bristol,
BS14 0XA**

Tel: 0117 903 1434

www.actionsportuk.com

Soft Play - for children up to 1.4m in height

Open Monday - Saturday 9am - 6pm and Sundays 10am - 5pm.

Other Leisure Centre activities:

Bath Pavillion, North Parade Road, Bath, BA2 4EU

Tel: 01225 486902

www.bathpavilion.org

Junior roller skating

Tuesdays, 4.30 – 7pm

Sessions include roller disco and roller hockey. Suitable for 11 year-olds and under. No need to book, just turn up.

Family roller skating

Mondays, 4.30 – 7pm (not available on Bank Holiday Monday). Fun for all the family! Book in advance at www.clstickets.co.uk or just turn up.

**Chew Valley Sports Centre, Chew Lane, Chew Magna,
Bristol, BS40 8QB**

Tel: 01275 333375

www.chewvalleyleisurecentre.co.uk

Squash, tennis and badminton courts available for hire throughout the summer holidays.

**Norton Hill Sports Centre, Charlton Road, Midsomer
Norton, BA3 4AD**

Tel: 01761 412136

www.nortonhillschool.com

Open Monday - Friday 8am - 10pm during the school holidays and 9am - 6pm at weekends. Activities offered include badminton, table tennis, outdoor tennis and an astroturf available for hire.

Classes available during the summer run by Body Basics:

www.fitnessatbodybasics.com. Kettlebells for over 16s and Zumba available for 10 years + with an accompanying adult.

Writhlington Sports Centre
Knobsbury Lane, Writhlington, Radstock
Tel: 01761 438559
www.writhlingtonsportscentre.co.uk

Climbing wall taster sessions

6 - 8 years - 30th July, 1st, 6th, 20th, 22nd and 28th August (10.00am - 11.00am),
9 - 12 years - 31st July, 21st and 27th August (10am - 11am)

Gymnastics and Trampolining

Children will experience 1 hour of trampolining followed by 1 hour of gymnastics (9.30-11.30am). They can then stay for an extra hour for lunch and craft activities (lunch not provided). The extra hour is optional and parents are welcome to collect their children at 11.30am following the gymnastics/trampolining session.

Courses suitable for children aged 5–7 and 8-12 years.

Sessions as follows:

4–6 years – 22nd, 24th, 29th July and 5th, 7th, 12th, 14th, 19th and 21st August (optional hour 11.30am – 12.30pm)

7-11 years - 23rd and 30th July and 6th, 13th and 20th August (optional hour 11.30am – 12.30pm)

Please note socks must be worn for trampolining.

Tennis

Fun tennis sessions, no previous tennis experience required.

Tiddlers 4 - 5 years (10am - 11.00am) 23rd, 30th July or 28th August.

Mini Red 6 - 8 years (10am - 12noon) 23rd and 30th July or 28th August.

Mini Orange 9 - 10 years (10.00am - 12noon) 24th and 31st July or 29th August.

All Day Kids Club - 22nd July - 30th August (excluding Bank Holiday Monday)

OFSTED registered centre (registration number EY330137)

All day kids club caters for children from 5 to 10 years, 8am – 4.30pm. It offers a wide range of activities including Trampolining, Gymnastics, Football, Team Sports and Challenges, Party Games, Arts and Crafts, Bouncy Castle, Face Painting, Messy Cooking, Dance Mats, Sportswalls, Go Bananas Activity Centre, Climbing Wall and much more. Children will be fully supervised throughout the day by qualified and experienced coaches on a ratio of 1 member of staff per 10 children. Drinks will be provided throughout the day. Children will need to bring their own water bottle, clearly marked with their name. A packed lunch is needed, as lunch is not provided.

Bristol Area

Bristol Pools and Leisure Centres: www.bristol.gov.uk/ccm/navigation/leisure-and-culture/sports--clubs-and-centres/

Bristol South Pool, BS3 1BS

Tel: 0119 9031618

Easton Leisure Centre, BS5 0SW

Tel: 0117 9031628

Hengrove Park Leisure Centre, The Boulevard,

Hengrove Park, Bristol, BS14 0JZ

Tel: 0117 9370200

www.leisurecentre.com/Centre-Home/hengrove-park-leisure-centre-swimming-gym-spinning-tennis/10.aspx

South Gloucestershire Leisure Centres: www.activecentres.org

Kingswood Leisure Centre, Church Road, Staple Hill, Bristol, BS16 4RH

Tel: 0300 333 0300

www.activecentres.org/centers/kingswood/

Galactica Soft Play for 0-9 year olds, holiday camp available. Junior gym available to young people over 11 years and at secondary school.

Longwell Green Leisure Centre, Aspects Leisure Park, Longwell Green, Bristol, BS15 9LA

www.activecentres.org/centers/longwell-green/

Tel: 0300 333 0300

Swimming and football courses available. Junior gym available to young people over 11 years and at secondary school.

**Whitchurch Sports Centre, Bamfield Road, Whitchurch, Bristol,
BS14 0XA**

Tel: 0117 903 1434

www.actionsportuk.com

Various activities available.

Soft Play - for children up to 1.4m in height

Open Monday - Saturday 9am - 6pm and Sundays 10am - 5pm.

Bristol City Community Trust - at Whitchurch Sports Centre

Tel: 0117 9630636

www.bristolcitycommunitytrust.org.uk/coaching/holiday-courses

Football coaching days:

24th - 26th July, 7th - 9th August, 19th - 23rd August and the 19th - 23rd August, 10am - 3pm (6 - 13 years). £15 per day, £40 for three days, £60 for five days.

Swimming Pools B&NES

Paulton Swimming Pool

Plumtre Close, Paulton, Bristol, BS39 7RD

Tel: 01761 411890

www.paultonpool.org.uk

Monkton Combe School, Bath, BA2 7HG

Tel: 01225 833363

www.monktoncombeschool.com/index.php?id=166

Swimming and other activities including holiday camps:

10% discount when booking 5 whole days in any one week:

Monkton Minis – 10th July to the 23rd August, 8.30am – 5.45pm (4 – 8 years)
£29.50 per day.

Pick and Mix – Arts and crafts and sport. 29th July to the 23rd August, 8.30am – 5.45pm (8 – 14 years) £29.50 per day.

If your chosen course does not commence from 8.30am or finish at 5.45pm an early and late stay is available.

Monkton Swim Camp

27th - 29th August

A 3 day Swim Camp aimed at swimmers who wish to push their ability to the next level. Focus is on technique with pool and dry land training. Attendees will have their skills analysed individually and coaching staff will provide guidance on stroke, technique and nutrition. The course is ideally aimed at boys and girls that currently swim, or who wish to swim at pre-competition or competition level. For children aged 9 -15 years (10.00am to 4.30pm). £169.00 for the three days.

Rookie Lifeguard

29th - 31st July

This 3 day course is designed for 8 – 14 year olds who want to know how to save themselves and other people. The award contains survival, rescue and sports skills, as well as life support and water safety elements in a fun and absorbing way. Children who have passed ASA Stage 6 will have fulfilled all criteria to join the course. Please call for more details of prerequisites in order to take part on the course. 1.00pm to 4.30pm for three days £72.00.

Libraries

Bath and North East Somerset Libraries:

www.bathnes.gov.uk/services/libraries-and-archives

Free

Bath Central

19 The Podium, Northgate Street, Bath BA1 5AN

Mon 9.30am-6pm, Tue, Wed & Thurs 9:30am-7pm, Fri & Sat 9.30am-5pm, Sun 1pm-4pm

Bath Moorland Road

Moorland Road, Bath BA1 3PL

Tue 9.30am-12.30pm & 1.30pm-7pm, Thurs 9.30am-1pm, Fri & Sat 9.30am-12.30pm & 1.30pm-5pm

Bath Weston

Church Street, Weston, Bath BA1 4BU

Tue 9.30am-12.30pm & 1.30pm-7pm, Thurs & Sat 9.30am-12.30pm & 1.30pm-5pm

Keynsham

Riverside, Temple Street (opposite the leisure centre) Keynsham BS31 1LA

Mon & Fri 9am-5pm, Tues & Thurs 9am-6pm, Sat 9am-4.30pm

Midsomer Norton

119 High Street, Midsomer Norton BA3 2DA
Mon 9.30am-7pm, Tue, Thurs & Fri 9.30am-5pm, Sat 9.30am-12.30pm &
1.30pm-4.00pm

Paulton

The Community Hub, 1 -2 Hill Court,
High Street, Paulton, Bristol, BS39 7QG
Mon, Wed & Fri 9.30am – 4.30pm
Tues 9.30am – 6pm and Sat 9.30am – 12.30pm

Radstock

The Street, Radstock BA3 3PR
Mon & Tue 10am-1pm & 2pm-5pm, Thurs 10am-1pm & 2pm-7pm,
Sat 9.30am-12.30pm

Saltford

478a Bath Road, Saltford BS31 3DJ
Tue 10am-1pm & 2pm-5pm, Thurs 9.30am-1pm & 2pm-5pm,
Sat 9.30am-1pm

Mobiles

See the website for times and routes:

www.bathnes.gov.uk/services/libraries-and-archives/access-all/mobile-library-routes or ask at any Bath & North East Somerset Library.

It's free to join the library. Everyone, even babies, can have a library card of their own! There is something for every age and you can borrow books, DVDs, talking books, use the internet and much more.

For telephone enquiries regarding renewals, opening hours and any other general information call Council Connect on 01225 39404.

Library Summer Events

Creepy House - Launches on Saturday 13th July.
To complete your challenge read, at least 6 books and
collect stickers along the way. The challenge ends on
Saturday 14th September.

Creepy House Launches - Saturday 13th July
Bath Central Library - Cassandra (International
Storyteller) 10.30am– 11.15am
Midsomer Norton Library - Michael Loader (local storyteller)
10.30am – 11.15am
Moorland Road Library - Mask making 10am - 12noon

Free

Zoolab - (Ticket required, £2.50 per child) Come and see live creepy crawlies and handle mini beasts:

Bath Central Library,
Wednesday the 31st July (10.30am - 11.30am)
Wednesday 14th August (10.30am - 11.30am)

Midsomer Norton Library, Wednesday 31st July (2pm - 3pm)

Keynsham Library, Wednesday 14th August (2pm - 3pm)

Stories & Crafts

Free

Creepy House stories and crafts:

Bath Central Library, Wednesday 24th July (11am – 11.45am)

Creepy House Stories:

Weston Library, Wednesday 21st August (10.30am - 11.15am)

Mask Making:

Keynsham Library, Wednesday 21st August (10am - 12noon)

Recycle an ex-library book

Closing date 31st August

Collect an old library book from any B&NES library, turn it into a work of art and return it to Bath Library. Ask at your local library for more details on how to enter.

Museums

Bath and North East Somerset

American Museum, Claverton, Bath, BA2 7BD

Tel: 01225 460503

www.americanmuseum.org

Open every day in August & including the August Bank Holiday 12noon – 5pm
Wheelchair accessible.

Under 5 years go free.

Download a free children's trail worksheet to use at the museum. Worksheets available for 3 - 9 years:

www.americanmuseum.org/visiting-us/kids-trails

Scrapstore Roadshow event (run by Wiltshire's Scrapstore) Make craft items from recycled materials on 25th July,
1st, 8th, 15th, 22nd, 29th August in the Coach House 1pm - 4pm

Kids Stuff – Hands On History

6th, 13th, 20th & 27th August, in the Coach House 1pm - 4pm.

Explore different objects from our handling collection each week. Drop in to the Coach House Workshop and test your skills as a museum curator! Join in to get up-close and personal with museum objects.

The Holburne Museum, Great Pulteney Street, Bath, BA2 4DB

Tel: 01225 388569

www.holburne.org

Free

Bath's art museum is open Monday to Saturday 10am - 5pm and Sundays and Bank Holidays, 11am - 5pm.

It is free to visit, but charges may apply for temporary exhibitions.

Wheelchair accessible.

Colourscape

17th to 26th August 2012 £5/£3

The Colourscape *Moonrooni* is arriving on our front lawn to bathe all ages in a kaleidoscope of colour. Inflatable

interconnected chambers flooded with intensely coloured light allowing you to experience colours that you might not even be able to name. Colourscape will feature a

programme of contemporary music each weekend.

Holburne Family Workshops & Events

Sunday 28 July £2.50

"I'm a Bookbinder ..." with Paula Tew

Discover Paula's eclectic collection of handmade books in a surprising range of sizes, shapes and materials from the traditional to the weird and wonderful! Learn some basic techniques and make your own exclusive book to take home.

Summer Art Camp for 5-13 year olds

9am - 4pm, £35 per day or £160 for four days.

Creative and fun day-long workshops inspired by the Museum's collection and exhibitions and led by the Holburne's experienced team of artists:

Monday 22nd – Friday 26th July – Famous Artists

Monday 5th – Friday 9th August – Art and Nature

Monday 19th – Thursday 22nd August – Microscopic Wonders

Museums may give discount upon presentation of a Discovery Card. To request an application form for a card, send an A5 stamped address envelope to:

Discovery Card, Pump Rooms, Stall Street, Bath, BA1 1LZ or visit the entrance to The Roman Baths, Riverside Council office in Keynsham, or The Hollies in Midsomer Norton, or visit:

www.bathnes.gov.uk/services/tourism-and-heritage/discovery-card

Free

Entrance to The Roman Baths and The Fashion Museum for residents of Bath & North East Somerset when presenting a B&NES Discovery Card.

Roman Baths & Pump Room, Abbey Church Yard, Bath, BA1 1LZ

Tel: 01225 477785

www.romanbaths.co.uk

Open every day in July and August 9am - 9pm.

Free for B&NES residents with a Discovery Card.

Limited access for wheelchair users.

Free

**Family drop-in events at the Roman Baths
Mondays 10am – 1pm and 2pm – 4pm**

22nd July **Togas and tunics**

(Dress up as a Roman)

29th July **It's all in the weave**

(Investigate how the Romans made fabrics and have a go at weaving)

5th August **Romans versus Celts**

(Investigate the differences and similarities between the Romans and Celts)

12th August **Invasion**

(When did the Roman army invade Britain and what did they do when they got here?)

19th August **Cook it up!**

(Investigate what the Romans ate for breakfast, lunch and dinner)

26th August **What's in a name?**

(Make a Roman name badge)

Fashion Museum, Bennett Street, Bath, BA1 2QH

Tel: 01225 477789

www.museumofcostume.co.uk

Free

Open every day 10.30am - 5pm.

Free for B&NES residents with a Discovery Card.

Wheelchair accessible

**Tuesday events at the Fashion Museum 10.30am – 12.30noon and 1.30pm
– 3.30pm**

Printing & Patchwork!

23th July **Birds of a feather printing**

30th July **Magical beasts printing**

6th August **Flower power printing**

13th August **Hedgerow hunt printing**

20th August **Patch passions patchwork**

Normal admission charges apply, or free to Resident
Discovery Card holders and National Trust members.

NEW for 2013

Sessions to be booked in advance for 11 - 16 year olds
10am-12 noon:

Friday 19 July & Monday 12 August - **Print perfection**

Explore our special exhibition and have a go at printing a fashionable bag.

Thursday 25 July & Monday 19 August - **Patchwork pals**

Explore our special exhibition and create a patchwork phone cover or pencil case. Bookings on 01225 477789 £5.00 per child

Victoria Art Gallery, Bath, BA2 4AT

Tel: 01225 477233

www.victoriagal.org.uk

Free

Open Tuesday - Saturday 10am - 5pm and Sunday 1.30pm – 5pm. Collections and small exhibitions free; variable charge for large exhibitions, but children under 16s free.

Wheelchair accessible

There are also regular events at the Victoria Art Gallery during the summer. Please see the following page for dates and times.*

***Book on 01225 477233 in advance, £4 per child.**

All children must be accompanied by an adult.

10.30am-12noon & 1.30pm-3pm, for 5 to 11 year olds

Fridays:

26th July **Figure it out**

Create faces and figures

2nd August **Cats and dogs**

Create some animal magic in your art.

9th August **Picture postcard**

Create holiday picture postcards.

16th August **Fabulous flowers, beautiful bugs**

Create beautiful flowers and bugs.

23rd August **Architecture as art**

Create a cityscape using mixed media.

30th August **Food glorious food**

Create a special foody still-life painting.

New for 3 to 5 year olds with squash and biscuits:

Thursday 15th August, 10.30am 11.30am

Sun, sand and sea

Enjoy making fishy underwater scenes.

Thursday 22nd August, 10.30am 11.30am

Buses and cars

Create art from buses and cars.

Museum of Bath at Work, Julian Road, Bath

Tel: 01225 318348

www.bath-at-work.org.uk

Free

Open every day 10.30am - 5.00pm. (Children on Sundays, with a maximum of two children per adult)
Adults £5.00 Concession rate of £3.50 available for seniors, children (5-16 years), unemployed or disabled.
Residents of Bath & North East Somerset £1 discount off admission charge.
Fully accessible on the main floor of the museum.

Bath Postal Museum, 27 Northgate Street, Bath, BA1 1AJ

Tel: 01225 460333

www.bathpostalmuseum.co.uk

Open Monday - Saturday 11am – 5pm.
Wheelchair access with a platform lift available.
Children under 6 years go free.

Hershel Museum of Astronomy, 19 New King Street, Bath, BA1 2BL

Tel: 01225 446865

www.bath-preservation-trust.org.uk

Open weekdays 1pm – 5pm Weekends and Bank Holidays 11am - 5pm
Bath & North East Somerset residents receive 2 for 1 entry with a Discovery Card when they purchase one full price ticket. A virtual tour is available to anyone who is unable to go upstairs.

Reflected Glory - 29th August, 10am - 11.30am

Find out how Georgians dressed for candle light evenings, jewels that glittered, fabric that gleamed and mirrors reflecting every sparkle. Suitable for children 5 - 10 years, £2 per person/child.

**The Building of Bath Museum, The Vineyards,
The Paragon, Bath, BA1 5NA**

Tel: 01225 333895

www.bath-preservation-trust.org.uk

Open Tuesday - Friday 2pm - 5pm and weekends 10.30am - 5pm. A joint ticket with No.1 Royal Crescent available. Limited access.
Children under 5 go free.

No. 1 Royal Crescent, Bath, BA1 2LR

Tel: 01225 428126

www.bath-preservation-trust.org.uk

Open Tuesday - Sunday 10.30am – 5.30pm and

Mondays 12noon - 5.30pm, last entry 4.30pm

30% discount with a valid Discovery Card.

Family Activity pack available to discover and explore objects in the museum.

Free to use then return it at the end of your visit.

After a recent refurbishment, the house is now accessible by lift to the first floor. Mobility scooters are not permitted.

Family Friday Workshops:

Free entry to both No.1 and the workshops below for
Discovery Card Holders accompanied by children.

Free entry to workshops with normal admission without a card.

All children must be accompanied by an adult.

Free

What do you treasure? - 2nd August, 11am - 1pm

Make your own treasure box and look in the museum for
inspiration. For ages 8 years and up.

Japanning with Glitter and Gold - 16th August, 11am -1pm Create a black
and gold Japanese style picture. For ages 5 and up.

Georgian Portraits - 30th August 11am - 1pm. Put yourself in the picture by
making your own 18th century portrait. For ages 5 and up.

Beckford's Tower and Museum, Lansdown Road, Bath, BA1 9BH

Tel: 01225 460705

www.bath-preservation-trust.org.uk

Open Saturday, Sunday and Bank Holiday Monday 10.30am – 5pm

Access to the Museum is on the first floor and the tower has 154 steps. A CD
tour of the museum and tower can be made available upon request.

Children under 5 years go free.

Radstock Museum, Radstock, BA3 3EP

Tel: 01761 437722

Visit: www.radstockmuseum.co.uk

Open Tuesday - Friday 2pm - 5pm, Saturday 11am - 5pm and Sunday and
August Bank Holiday 2pm – 5pm

Fully accessible.

Children under 5 years go free.

Current exhibition ending in July looking at children of the pits who worked in
local mines during the 19th and 20th century. Information includes home and
family life, education, working conditions and health issues.

Museum of East Asian Art (MEAA), 12 Bennett St, Bath BA1 2QJ

Tel: 01225 464640

www.meaa.org.uk

Open Tuesday -Saturday 10am - 5pm, Sundays 12noon - 5pm (CLOSED on Mondays)

Fully accessible.

Tanabata Festival - 30th July 2pm - 3.30pm

Celebrate the star festival from Japan.

Make origami and decorate the bamboo outside of the museum to make your wish come true! (Please book by the 28th July)

Session free with entrance fee.

Calligraphy for kids

20th August 2pm - 4pm (Please book by the 17th August) Session free with entrance fee

The Jane Austen Centre, 40 Gay Street, Bath, BA1 2NT

Tel: 01225 443000

www.janeausten.co.uk

Open 9.45am - 5.30pm Sunday - Wednesday and

9.45am - 7pm Thursday - Saturday

Wheelchair access on the ground floor only.

Children under 6 years free with a paying adult.

Bristol and the wider area

Ashton Court Estate, Long Ashton, Bristol, BS41 9JN

Tel: 0117 9639176

www.ashtoncourtmanison.co.uk/facilities&prices

Visitor's centre open Wednesday to Sunday 10am - 3pm. Parking charges apply. Grounds open 8am - 9.15pm.

Toilets and café available.

Bristol City Museum & Art Gallery, Queens Road, Clifton, Bristol, BS8 1RL

Tel: 0117 9223571

www.bristol.gov.uk/museums

Open weekdays 10am - 5pm.

Saturdays, Sundays and Bank Holiday Monday, 10am – 6pm. Family friendly areas which include 'Curiosity' the under 7's gallery.

Wheelchair access to most floors.

Free

Family explorer kits are available for hire from Bristol Museum and M Shed. Suitable for under 7s. £2 to hire from M Shed Shop (plus £8 refundable deposit).

Summer Holiday Discovery Days, Wednesdays 10am - 1pm. Just drop in. Suitable for all ages unless otherwise stated. Suggested donation: £2 per child:

Art: Make Your Mark! - Wednesday 31st July

Assyria: Discovery Day - 7th August

Romans: Discovery Day - 14th August

World Cultures: Discovery Day - 21st August

Natural History: Discovery Day - 28th August

Go Behind the Scenes - Saturday 17th August 10am, 11am, 1pm and 2pm.

Take a closer look at Bristol's unseen natural treasures with a friendly expert. Book on the day. Tours last about 40 minutes. Suggested donation: £2.

**Blaise Castle House Museum, Blaise Castle Estate,
Henbury, Bristol, BS10 7QS**

Tel: 0117 9039818

Free

Visit: www.bristol.gov.uk/museums

Open Tuesday to Sunday 10.30am - 4pm

Limited wheelchair access to house.

Bristol's Georgian House, Great George Street, Bristol, BS1 5RR

Tel: 0117 9211362

Free

www.bristol.gov.uk/museums

Open July to August, Tuesday to Sunday 10.30am – 4pm. CLOSED Mondays, with the exception of Bank Holiday Monday (10.30am - 4pm).

Limited wheelchair access.

**Clevedon Pier and Heritage Centre, The Beach,
Clevedon, BS21 7QU**

Tel: 01275 878846

www.clevedonpier.com

Open Monday - Friday 10am - 5pm

Saturday and Sunday 10am - 6pm

Boat trips, fishing, an art gallery and activity booklet for children are available at the Grade 1 listed pier.

Children under 3 years go free, standard child admission rate is £1 (up to 14 years) and adults £1.80.

The Heritage Centre is a short walk away and entry is

Open Tuesday - Friday 10am - 5pm and weekends 10am - 6pm

Free

Kingswood Heritage Museum, Tower Lane, Warmley, Bristol, BS30 8XT

Tel: 0117 9605664

www.kingswoodmuseum.org.uk

Open Tuesdays, Saturdays and Sundays 2pm – 5pm
August Bank Holiday weekend, Saturday, Sunday and
Monday, open 11am – 5pm. 90% accessible.
Children under 5 years go free.

Guided walks are available to see the grottoes every second Sunday of the month, starting at 2.15pm.

M Shed, Wapping Road, Princes Wharf, Bristol, BS1 4RN

Tel: 0117 3526600

www.mshed.org

Open Tuesday – Friday 10am – 5pm Saturday and Sunday 10am – 6pm

CLOSED on Mondays

Fully accessible.

Free

Lockers are available with a refundable £1 to store coats/baggage.

Summer Activities include:

Fingertip Explorers

Tuesday 6 and 13 August 11am and 11.45am

Tuesday 20 and 27 August 1.30pm, 2.15pm and 3pm

Can you work out what the mystery objects are through touch? Book on the day at Reception. Suitable for 7+

International Slavery Remembrance Day

Friday 23 August 10am to 5pm

Follow a trail and learn about Bristol's history and observe this day of remembering our shared past.

Ride M Shed's boats, cranes and trains! Available daily in the holidays.

Pause and Play!

Every Saturday 1pm to 4pm (in the Life Gallery)

A chance for visitors of all ages to play with toys from generation's past.

**North Somerset Museum, Burlington Street, Weston-Super-Mare, BS23
1PR**

Tel: 01934 621028

www.weston-super-maretowncouncil.gov.uk/museum.aspx

Open Tuesday – Sunday and Bank Holiday Monday,
10am - 5pm

Suitable for all ages, with activity sheets during the holidays. Venue is wheelchair and buggy accessible on the ground floor and there is a baby changing room.

Under 16s free with accompanying adult.

**The Helicopter Museum, The Heliport, Locking Moor Road, Weston super
Mare, BS24 8PP**

Tel: 01934 635227

www.helicoptermuseum.co.uk

Open daily from the 18th July – 31st August 10am - 5.30pm.

Fully accessible.

Children under 4 go free.

National Trust Activities

Dyrham Park, Dyrham, Tormarton, Bristol, SN14 8ER

Tel: 0117 9372501

www.nationaltrust.org.uk/dyrhampark

Open daily 11am – 5pm (House and Garden), 10am – 5pm (Park). Wheelchair access to ground floor of the house only.

Tuesday Toddler trail

23rd July, 10.45 – 11.30am

This trail is designed for toddlers to learn about shape, colour and numbers while exploring nature. Meet outside the Orangery down by the house at 10.45am. Children must be accompanied by an adult. Trails lasts approx. 30-45mins. You will need to arrive in the car park by 10.30 in order to catch the first shuttle bus down to the house. Trails may be cancelled in adverse weather. Normal admission applies.

Family nature trails

25th and 30th July, 1st, 6th, 8th, 13th, 15th, 20th, 22nd, 27th & 29th August,
11am – 12pm and 2pm – 3pm

Explore the park through exciting activities on one of our popular guided nature trails. From pond-dipping or bug-hunting to spotting the deer, get outdoors and closer to nature. Normal admission applies.

Lazy Jazz on the lawn,

Sundays, 28th July and the 4th and 18th Aug, 1.30pm - 4pm

Enjoy an afternoon in the West Garden relaxing to some lazy jazz. Normal admission applies.

Den building

Weds 14 & Weds 28 Aug, 11am – 3pm

Join our outdoor team for a fun afternoon of den building in Badminton Plantation in the park and tick off another activity from the '50 things to do before you're 11 ¾' list. Children must be accompanied by an adult at all times. Normal admission applies.

Tree climbing day

Thurs 29 Aug, 11am – 4pm

Join us at Dyrham Park for a day of free tree climbing with a professional climbing team. The tree climb is aimed at children aged 5-16 years, but any child will be considered for a small climb. Children must be accompanied by an adult at all times. Normal admission applies.

Prior Park, Ralph Allen Drive, Bath, BA2 5AH

Tel: 01225 833422

www.nationaltrust.org.uk/priorpark

Open daily 10am - 5.30pm

Limited accessibility

Free

Festival of Archaeology

Saturday 27 July, 11am - 3.30pm. Join archaeologists and local history societies to explore the landscape in and around Prior Park Landscape Garden. Take a history trail, find out about archaeology and handle objects from the past. Discover the history of Prior Park Garden, Combe Down and Ralph Allen's stone mines. Explore how archaeology helped restore the wilderness and enjoy a stone carver at work.

Normal admission charges apply. Free for Bath & North East Somerset Discovery Card holders and National Trust members.

Children's outdoor theatre - 'Sherlock Holmes'

27th July, 5.30pm

An outdoor theatre for children and adults alike. A brand new adaptation compiling all the master detective's best bits into a new adventure. Expect action, mystery and mayhem as Holmes and Watson team up to crack their most fiendish case yet - with the help of the audience!

Visitor Reception Team, 01225 833422, priorpark@nationaltrust.org.uk

Open Play Opportunities

The Community Bus

Tel: 01761 419557

www.thecommunitybus.org.uk

communitybus@hotmail.co.uk

Open playscheme for 5 - 13 year olds - £2 per session. Fun activities on and off the Playbus including arts and crafts, fire-making, den-building, junk-modelling, cooking, dressing-up, messy stuff, sports and games.

Registration is on a first come first in basis 15 minutes before the start of each session. All sessions are 10.30am-12.30pm and 1.30pm - 3.30pm:

Monday 29th July - Keynsham, Castle School

Tuesday 30th July - Haydon, Que Club (BA3 3QR)

Wednesday 31st July - Timsbury, Conygre Hall (BA2 0JG)

Thursday 1st August - Paulton, Village Hall (BS39 7LW)

Monday 5th August - Keynsham, Castle School grounds

Tuesday 6th August - Haydon, Que Club

Wednesday 7th August - Timsbury, Conygre Hall

Thursday 8th August - Paulton, Village Hall

Tuesday 13th August - Haydon, Que Club

Wednesday 14th August - Timsbury, Conygre Hall

Thursday 15th August - Paulton, Village Hall

Wansdyke Play Association

Tel: 01761 420660

www.wpa-play.com

Activities free unless stated:

Free

Week 29th July – 2nd August

29th - With the Community Bus at **Castle School, Keynsham**. (10.30am – 12.30pm & 1.30pm – 3.30pm)

29th - **Writhlington Plantation Playscheme**, The Plantation, (10am - 2pm) £5 per child.

30th – **Peasedown St John Community Play Day**, Beacon Field, Peasedown St John. (12noon – 4pm)

31st - **Keynsham Play Day**, Memorial Park, Bath Hill, Keynsham (2.30pm - 5pm)

- 31st - **Singers Knoll Play Day, Frome** (10.30am – 1pm)
1st - **Westhill Play Day, The Rec**, Westhill Gardens, Westfield (10.30am – 1pm)
1st - **St John's Woodland Play Day**. Woodland area of St John's Primary School, Redfield Road, Midsomer Norton (2.30pm - 4.30pm).

Week 5th August – 9th August

- 5th - **Writhlington Plantation Play Day** (10.30am – 1pm)
5th - Supporting the Community Bus at **Castle School, Keynsham** (10.30am – 12.30pm & 1.30pm – 3.30pm)
6th - **Somer Valley Adventure Play Park, Midsomer Norton** (10.30am – 1pm).
7th - **National Play Day in the Memorial Park, Bath Hill, Keynsham**. Celebrating National Play Day with lots of fun in the park. Face painting, frisbee golf, glass painting, mosaic making, dressing up and loads more. Supported by the B&NES Wheels for All project. Entry is free and all WPA activities are free. Other supporting organisations may charge (11am – 4pm).

7th - **Play Day in Frome** venue to be confirmed, please call for information (11am- 4pm)

- 8th - **Bishop Sutton Play Day**, Wick Rd Play Park. (10.30am – 1pm)
8th - **St John's Woodland Play Day**, St John's Primary School, (2.30pm - 4pm).

Week 12th August – 16th August

- 12th - **Downfield Play Day, Downfields Park, Keynsham**, (10.30am - 1pm)
12th - **Writhlington Plantation Play Day**, 2.30pm - 5pm
13th – **Peasedown St John Play Day**, Beacon Field (10.30am – 1pm)
14th - **Keynsham Play Day**, Memorial Park, Bath Hill, Keynsham (2.30pm - 5pm)
14th - **Singers Knoll Play Day, Frome** (10.30am – 1pm)
15th - **Westhill Play Day, The Rec**, Westhill Gardens, Westfield (10.30am – 1pm)
15th - **Frome Playscheme**, venue to be confirmed, please call for information (10am – 2pm) £5 per child.

Week 19th – 23rd August

- 19th - **Writhlington Plantation Play Day** (10.30am – 1pm)
19th - **Frome Playscheme** (10am – 2pm) £5 per child
20th - **Somer Valley Adventure Play Park, Midsomer Norton** (10.30am – 1pm)
21st - **Keynsham Play Day**, Memorial Park, Bath Hill, Keynsham (2.30pm - 5pm)
21st - **Singers Knoll Play Day, Frome** (10.30am – 1pm)
22nd - **Bishop Sutton Play Day, Wick Rd Play Park** (3pm - 5pm)
22nd - **Frome Playscheme** to be confirmed, please call for information (10am – 2pm) £5 per child.

Week 26th August – 30th August

- 26th - **Plantation Play Day**, The Plantation, Writhlington (10.30am - 1pm)
- 26th - **Frome Playscheme** to be confirmed, please call for information (10am – 2pm) £5 per child.
- 27th – **Peasedown St John Community Play Day** (12noon – 4pm)
- 28th - **Keynsham Play Day**, Memorial Park, Bath Hill, Keynsham (2.30pm - 5pm)
- 28th - **Singers Knoll Play Day, Frome** (10.30am – 1pm)
- 29th - **Westhill Play Day, The Rec**, Westhill Gardens, Westfield (10.30am – 1pm)
- 29th - **St John's Woodland Play Day**, St John's Primary School (2.30pm - 4.30pm)

Bath Area Play Project (BAPP)

Tel: 01225 832479

Free

www.bapp.org.uk

Bath Area Play Project will be running play sessions this summer with the Community Play Team which look to be wheely fun (Wheels for All) providing 'Play Out Wild' opportunities. All sessions are 1pm – 2pm and free of charge.

For details of Bath Area Play Project's National Play Day on the 7th August, please see page 87

Week 22nd 26th July

- 23rd - **Green Park Community Playday** (inside by Sainsbury's)
- 24th - **Bath City Community Farm Playday** (Kelston View, Whiteway)
- 25th - **Odd Down Playing Fields and Cycle Circuit**
- 26th - **Family Play Session, Odd Down Community Centre** (Odins Road)

Week 29th July - 2nd August

- 29th - **Weston Community Playday** (Weston Rec)
- 30th - **The Firs Community Playday** (Combe Down)
- 31st - **Alice Park Community Playday**
 - 1st - **Family Play Picnic**, Corston View (Odd Down)
 - 2nd - **Play Out Wild** (Rainbow Woods, near Combe Down, meet at the entrance on North Road by the toilets)

Week 5th - 9th August

- 5th - **Roundhill Community Playday**, Southdown
- 6th - **Sandpits Community Playday**, Oldfield Park
- 8th - **Let's get moving/wheels day** at Southside Youth Hub, Kelston View, Whiteway.
- 9th - **Family Play Session**, Riverside Youth Hub, London Road

Week 12th - 16th August

12th - **Weston Community Playday** (Weston Rec)

13th - **The Firs Community Playday** (Combe Down)

14th - **Bath City Community Farm Playday** (Kelston View, Whiteway)

15th - **Family Play Picnic** (Meet at the Newbridge Park and Ride)

16th - **Play Out Wild** (Pennyquick Brook, meet at Newton Mill Campsite,
Newton Road, Twerton)

Week 19th - 23rd August

19th - **Roundhill Community Playday**, Southdown

20th - **Green Park Community Playday** (inside by Sainsbury's)

21st - **Community Play Day** (Bloomfield Open Space, Odd Down)

Free

BAPP are pleased to be supporting children and families in Whiteway with some free morning play sessions in the school holidays. These will be based at Southside Youth Hub and supported by B&NES Youth Service and Play Team and running from 10am to 12 noon on two mornings each week. Children are currently planning what they would like to see happen and are likely to include football and other sports, cycle races and obstacle courses, scrap and loose parts play, cooking as well as opportunity for free play outside, making dens etc etc. For further information and dates, please see BAPP website

www.bapp.org.uk/hol_play.htm or ring 01225 832479

Percy Community Centre

New King Street, Bath, BA1 2BN

Tel: 01225 423014

www.percycentre.org.uk

Tuesdays, Wednesdays and Thursdays from 23rd July to 15th August. Open access playscheme at the Percy

Community Centre from 2pm – 4pm. A wide range of activities for 5 – 13 year-olds including: sports workshops, arts and crafts, inflatables and other creative activities. Donations appreciated. Children who have not yet started Year 1 must be accompanied by an adult.

Free

Outreach sessions also at Lampard Buildings, just off of Julian Road, Bath on Monday and Fridays from the 23rd July to the 16th of August, 2pm - 4pm. Play equipment/resources are brought to the area to encourage play, led by play workers from The Percy Community Centre.

Whisty Summer Holiday Playschemes

Whisty Hall, Walnut Buildings, Radstock, BA3 3JL

Tel: 01761 439346

All sessions 10am - 12noon, for 4 - 11 years at £2 per child

22nd, 24th and 26th July

29th and 30th July and 2nd August

5th, 7th and 9th August

Youth Activities

TimeOut Drop-in Centre

1-2 River Terrace, Temple Street

Keynsham, Bristol, BS31 1HE

Tel: 0117 9868683

youthworker@keynsham-tc.gov.uk

Football at Kelston Park, Keynsham

For young people 11 years and older. Limited places, first come, first served.

All sessions 11am - 2pm. (Bring a packed lunch)

6th - 7th August

13th - 14th August

20th - 21st August

Contact Mark Willcox youthworker@keynsham-tc.gov.uk

0117 9868683

Free

Timeout Open Sessions

Mondays and Thursdays 7pm - 9.30pm

A variety of activities available including arts and crafts, issue based projects, cooking, Xbox Live, pool table, video projector for Wii games and movies, a chill out room, Macs with internet access and a printer. Software includes Final Cut Express and IMovie for film and stop motion animation making and special FX software. There is also Logic Pro Studio and Garage Band to make music.

Free

Project Night

Wednesdays 7pm - 9pm

Project sessions to develop young people's life skills.

Workshops on confidence, bullying, cyber-bullying, health, drugs, personal effectiveness, team work, arts and creative school development, babysitting course, first aid course, healthy eating and nutrition, communication and decision making, politics, counselling, befriending and advice training, skills for life and independent living.

Free

Timeout Task Force

Free

Wednesdays 7pm - 9pm

A young people's initiative for 12 - 18 year olds to improve social and practical skills by making new friends and trying new activities, whilst benefitting the community by making Keynsham and its surroundings a better place through various tasks.

Clowning Workshops by the Bristol based clowning group 'The Original Spinners'

Free

The workshops include physical theatre/clowning warm up exercises at the start of each session. The project starts during the centre's open sessions to encourage young people to participate, have fun, learn new skills, then have the opportunity to performing at the Keynsham Youth Fest on Saturday 21st September at Keynsham Memorial park.

Wednesday evenings & 1 Monday:

26th June, 15th July (Monday), 24th & 31st July,
14th August and the 4th, 11th and 18th September

The Bath and North East Somerset Youth Service Mobile is working in the following locations during the Summer:

Monday 7pm till 9pm - Chew Stoke Doctor's Surgery car park.

Tuesday 12noon till 2pm - Foxhill Spring Fields Park.

Tuesday 7pm till 9pm - Saltford. Behind the Village Hall.

Wednesday 12noon till 2pm - Chew Valley Lake

Wednesday 7pm till 9pm - Bishop Sutton (behind the Village Hall).

Thursday 4pm till 6pm - Odd Down playing fields.

Thursday 7pm till 9pm - Foxhill, Springfield park.

There are lots of other youth events happening, but not available at time of print. Please contact 01225 396985 for more information.

Parks and Play Areas

Parks and Gardens

Parade Gardens, City Centre, Bath

Picnic area, café, river and weir and toilets.

(**FREE** to B&NES residents with a Discovery Card)

Bath's most centrally situated gardens. Overlooking the River Avon. There is a refreshment kiosk open Easter to the end of September.

Alexandra Park, Shakespeare Ave, Bath (near Bear Flat)

The park offers views across the city of Bath and has a play area and toilets.

There is a wooded walk into the city centre.

Alice Park, Gloucester Road, Bath

Play area with swings, climbing net and wall, slide and a table tennis table, picnic area, café, tennis, boules and a basketball hoop and toilets. www.alicepark.co.uk

Beazer Maze, Pulteney Weir, Bath

Paving stone maze garden, with lawns for picnics.

Hedgemoor Park, Lansdown Road, Bath

Small children's play area. Unsuitable for wheelchair users.

Henrietta Park, Henrietta Street, Bath

Picnic area, gardens, fountain and pond, parking and toilets.

Memorial Park, Bath Hill, Keynsham

Riverside walks, water wheel, weir, play area, play equipment, tennis, bowls, skateboarding, BMX, café, toilets, parking (fee payable).

Royal Victoria Park, Marlborough Lane, Bath

Adventure park, equipment for all ages, tennis, aviary, pitch-and-putt, bouncy castle, skateboarding, café, open space, toilets and parking (charges now in place). The Bath Botanic Gardens are also a feature within the park.

Sydney Gardens, Bathwick, Bath

Canal path, duck pond, gardens, play area, tennis courts, refreshments kiosk and toilets.

**Chew Magna Lake and Restaurant, Wally Court Road,
Chew Magna**

Open every day 10.30am - 5.30pm.

Disabled access.

Walks, wildlife, fishing (licence required) sailing,
café, toilets, parking (fee payable).

Bandstand concerts which happen every Sunday in Parade Gardens and occasional Sundays in Royal Victoria Park. The latest information about them can be found here: www.bathnes.gov.uk/services/sport-leisure-and-parks/parks-opening-times-and-locations/band-concerts

Information about Keynsham Memorial Park bandstand can be found on the following link:

www.keynsham-tc.gov.uk/Core/Keynsham-Town-Council/Pages/Bandstand_Events_1.aspx

There are numerous children's parks and playgrounds across Bath and North East Somerset maintained by Parish and Town Councils and Curo housing. For a list of features please visit: www.bathnes.gov.uk/services/sport-leisure-and-parks/playgrounds. The webpage includes some of the following:

Bath:

Beacon Hill
Bloomfield
Brassmill Lane
Corston View
Dorset Close
Firs Field
Innox Park
Kelson's Field
Loxton Drive
Parry Close
Redland Park
Widcombe

Keynsham and Chew Valley:

Coppards Road (Bishop
Sutton)
Burchill Close (Clutton)
Chalfield Close (Keynsham)
Chelwood Road (Saltford)
Claverton Road (Saltford)
Dutchy Road (Clandown)
Vandyck Ave (Keynsham)

Norton Radstock:

Clapton Road

Green Acres

Hillside Crescent

Kilmersdon Road

Spencer Drive

Staddlestones

Shakespeare Road (Westfield)

Waterford Park (Westfield)

Manor Copse (Writhlington)

Old Road (Writhlington)

Peasedown St John:

Beacon Field

Eckweek Lane

Play Pathfinder

www.bathnes.gov.uk/communityandliving/childcare/PlayOutHangOut/PlaySpaces/Pages/default.aspx

The Play Pathfinder programme was a national initiative to provide quality inclusive play spaces for 8 - 13 year-olds in areas where they naturally play and meet. The project in Bath & North East Somerset began in 2008 introducing a range of natural and exciting play features such as climbing towers, sand, boulders, landscaping, swings, zip wires and bike tracks. In some cases the local community were invited to take part in the carving of wooden play structures. Each of the sites have been designed to support ideas from children and young people living nearby. The following 32 sites have been developed since October 2008:

Batheaston Village Play Area

Brickfields (Lymore Avenue)

Clutton Park (Venus Lane)

Daglands (Camerton)

East Harptree Playing Field

Freshford Park (Freshford Lane)

Green Park (Bath)

Groewood Play Area (Haydon)

Kelston Road (Keynsham)

Kensington Meadow Playing Fields (Bath)

Larkhall Recreation Ground (Charlcombe Lane) Memorial Park (Keynsham)

Miners Welfare Recreation Ground (Paulton)

Peasedown Recreation Field

Pennyquick Hill (Twerton)

Pensford Play Area (off of Publow Lane)

Radstock Tynning (Between Woodborough Road and Morely Terrace)

Roundhill Park (Southdown, Bath)

Sandpits (Oldfield Park, Bath)

Shoscombe Village Play Area

Somer Valley Adventure Play Park and Skate Park (Gullock Tynning, Midsomer Norton)

Swings and slides, sand and water-play, climbing features and a zip wire, small trampolines, mounds and tunnels, skateboard/ scooter/bike park with bowls and street-style area, benches and rocks.

Springfield Park, Foxhill

Stanton Drew Play Area

Timsbury Recreation Field

Tunley Recreation Centre

Wellow Village Park

Widcombe Play Area

Woody Play Area (Woodhouse Road, Twerton)

Wheels for All

Tel: 01225 396433

www.bathnes.gov.uk/wheelsforall

Inclusive cycle sessions for disabled children and adults with differing needs.

27th July - **July Saturday Club** - Odd Down Cycling Circuit Try out trikes, hand cycles and tandems that suit a wide range of needs. £3 per person or £1.50 using own bike.

3rd, 10th, 17th and 24th August - **August Saturday Club** - Odd Down Cycling Circuit. £3 per person or £1.50 using own bike.

Super Summer Wheelie Road shows!

Free drop in sessions with the bikes and trikes:

7th August - National Play Day, Keynsham Memorial Park
11am - 4pm

13th August - Peasedown St John Beacon Field, 10.30am - 1pm

20th August - Somer Valley Play Park, 10.30am - 1pm

21st August - Two Tunnels Greenway, Bloomfield, Bath

Summer Play Schemes for Children and Young People with Additional Needs

Please visit the new online Rainbow Resource website:
www.rainbowresource.org where you will find a calendar of events happening
in the local area, with a focus on activities for children and young people with
additional needs.

Summer Play Scheme at The Hut Bath Area Play Project Hinton Close, Whiteway, Bath, BA2 1RX Tel: 01225 832479

5th - 16th (10am - 3.00pm) 5 - 12 years, £7 per
session. An inclusive play scheme for disabled and
non-disabled children. A packed lunch required. Children will need to be booked
in advance for all provision by completion and return of a booking form.
Booking forms are available on the BAPP website
www.bapp.org.uk/holplay.htm or call the BAPP office on (01225) 832479.

Families who have not used the provision before will also need to complete a
registration form. Where children require medication to be administered whilst
at playscheme, parents/carers will also need to complete a medication consent
form.

Play Scheme at Three Ways School

Time: 9.00am-3.00pm
Age Range: 5-19 years
Cost: £7.00 per session
Dates: 22nd July - 2nd August

This is a targeted play scheme specifically for disabled
children age 5-19 years and their siblings. Packed lunch
required.

**Summer Play Scheme at Three Ways School –
Bath Area Play Project**

Frome Road, Odd Down, Bath, BA3 3AL

Tel: 01225 832479

22nd July - 2nd August (9am - 3pm) 5 - 19 years, £7.00 per session. A targeted play scheme specifically for disabled children and their siblings.

A packed lunch is required. Visit www.bapp.org.uk/holplay.htm or call the BAPP office on (01225) 832479

Fosse Way School Play Scheme

Longfellow Road, Midsomer Norton, BA3 3AL

All sessions 10am - 4pm, £6.00 per session

3-8 years - 23rd - 26th & 29th July
30th July - 2nd & 5th August
6th - 9th & 12th August

9-11 years - 24th & 26th July
30th July, 1st & 5th August
7th & 9th August

12-19 years - 23rd, 25th & 29th July
31st July & 2nd August
6th, 8th & 12th August

A packed lunch is required.

Activities include: Swimming, Arts & Crafts, Sports, Outdoor Play, Free Play, Messy Play, Sensory Room, Soft Play, Cooking, Computers/Laptops/Wii and much more.

Past trips have included: Beach, woodland walks, museums, adventure play parks and farms.
(Spaces were available at the time of publication)

To book a place please contact Hannah Jones 01761 404202 or visit www.fossewayschool.com for an application form.

KIDS Holiday Play Scheme

St Keyna Primary School, Monmouth Road, Keynsham, Bristol, BS31 2JP

Sessions take place from 9.30am - 3.30pm on the following dates:

13th, 14th & 15th August

20th, 21st & 22nd August

27th, 28th & 29th August

Play Scheme for 5-19 years (children and young people must already be in year 1 or equivalent to attend). Activities on site include art and craft, games and toys and sensory play. There will be opportunities to go swimming and local trips. Please bring a packed lunch.

To book a place contact Andrew Gillan on 0117 9476111 or email:

Andrew.Gillan@kids.org.uk

or email: enquiries.bristol@kids.org.uk

Holiday Swim Therapy

Tel: 01225 337555 (Pamela Galloway)

www.bathswimtherapy.org.uk

contact@bathswimtherapy.org.uk

Sessions during the school holidays (22nd July – 8th August), open to any child or young person whatever their level of disability or special needs. Held in a small warm pool with full accessible changing facilities. Sessions provide one-to-one time with a specialist physiotherapist with additional training in teaching swimming to the disabled so can focus on hydrotherapy or learning to swim or both. Follow on sessions will be available in term time.

Three Ways School, Odd Down, Bath, BA2 5RF.

Mondays, Wednesdays and Thursdays (10am – 1pm).

Learner pool in Longwell Green Leisure Centre, Aspects Leisure Park,
Longwell Green, Bristol, BS15 9LA. Tuesdays (1.30pm – 4.00pm).

Time2Share Summer Activities

Tel: 0117 941 5868

Time2Share runs several groups for young people aged 14-19 in Bristol, Bath & North East Somerset. The groups are intended for young disabled people to get together and socialise and have fun with the added support of workers and volunteers. Sessions cost £4 or the cost of tickets/food. Places must be booked in advance. Activities continue throughout year.

Sat 13 July	Twerton Skittles	4.00 pm – 7.00 pm
Fri 19 July	MN Friday Night Group	6.30 pm – 9.30 pm
Sun 28 July	Bath Cinema	To be confirmed
Sat 03 August	MN Skittles	2.00 pm – 5.00 pm
Weds 07 August	Radstock Wireworld	1.00 pm – 4.00 pm
Sat 10 August	Midsomer Norton BBQ	3.00 pm – 6.00 pm
Weds 14 August	Radstock Wireworld	1.00 pm – 4.00 pm
Fri 16 August	Dinner Groups Meal Out	6.30 pm – 9.30 pm
Tues 20 August	Bath Cinema	To be confirmed
Weds 21 August	Radstock Wireworld	1.00 pm – 4.00 pm
Sat 31 August	Twerton Skittles	4.00 pm – 7.00 pm

Visit www.time2share.org.uk or call the Time2share office on 0117 941 5868

Specialist Summer Schools/Activities

Art ideas

The Creation Station

Tel: 0844 854 9086

www.thecreationstation.co.uk

nickismith@thecreationstation.co.uk

Arty Family Fun workshops open to all children from 1-11 years and with the aim to include all the ages and abilities so that families and friends can have fun together. £5 per workshop (siblings at £3) and places must be pre-booked, but you can pick and choose which ones you can get to!
All workshops are from 10-11am.

St Philip and St James' Church Centre (Manna House),
35 Frome Road, Odd Down, Bath, BA2 2QF
Midsomer Norton Methodist Church Centre, High Street, Midsomer Norton,
Radstock, BA3 2DR
Bathampton Scout Headquarters, Warminster Road, Bathampton, BA2 6XL

Beauty and the Beasties (creating minibeasts)

Tuesday July 30th - Odd Down, Bath

Wednesday July 31st - Midsomer Norton

Thursday August 1st - Bathampton

Creative Clay Play

Tuesday August 6th - Odd Down, Bath

Wednesday August 7th - Midsomer Norton

Thursday August 8th - Bathampton

Under the Sea

Tuesday August 13th - Odd Down, Bath

Wednesday August 14th - Midsomer Norton

Thursday August 15th - Bathampton

Dream catching workshop

Tuesday August 20th - Odd Down, Bath

Wednesday August 21st - Midsomer Norton

A Space Adventure workshop

Tuesday August 27th - Odd Down, Bath

Wednesday August 28th - Midsomer Norton

Thursday August 29th - Bathampton

Funky Art House

**Bath Artist Studios, The Old Malthouse, Comfortable Place, Bath, BA1
3AJ**

Tel: 07954 363467

www.funkyarthouse.co.uk

12th - 16th August (9.30am - 3.30pm) Early and late pick up available at a cost of £6 per hour. Juice and a snack are provided, please bring a packed lunch. All materials included and all abilities welcome.
£35 per day or £155 for the whole week

Monday - Mosaic mirrors and glass painting

Tuesday – Paper crafts - Collage boxes and homemade sketchbooks

Wednesday - Clay creations

Thursday - Textiles

Friday - Drawing and Printing

**Going for Gold - Funky Art House, Hayesfield School, Upper Oldfield
Park, Bath, BA2 3LA**

www.goingforgold.org.uk

Varying courses across the summer holiday period including those run by Funky Art House for children in Year 4 up to Year 13 at school.

Other three day summer workshops (July 23rd - 26th) run by Going for Gold include: Going on a summer picnic, LEGO Island, Space, Infinity and Beyond, Summer Dance and Understanding Asian Textiles.

Gary Wood Ceramics, One Two Five, Box Road, Bath, BA1 7LR

Tel: 01225 858888

www.onetwofiveartschool.com

www.garywoodceramics.co.uk

29th July - 2nd August, an art school for 12 – 16 year olds. Activities include: painting, pottery, screen printing, collage, textiles, sculpture film and photography.

Make Your Mark, 11 Pulteney Terrace, Bath, BA2 4HJ

Tel: 07855 887018

www.makeyourmarkstudio.co.uk

Sessions 10am - 12noon. If full, another session 1.30pm - 3.30pm will be offered. Sessions are for 4 upwards and an adult needs to stay with any children under school age:

25th July and 2nd August - **T-shirt printing and decorating**

26th July and 5th August - **Drawing-based projects looking at light and dark**

1st August and 6th August - **3D coloured clay and wire bugs/experiments with plaster casting.**

Performing arts, dance and music

the egg,

Theatre Royal Bath, Sawclose, Bath, BA1 1ET

Tel: 01225 823409

[www.theatreroyal.org.uk/page/3026 Workshops+&+Summer+Schools](http://www.theatreroyal.org.uk/page/3026+Workshops+&+Summer+Schools)

Financially assisted places available for all courses. Please ask:

Monkey and Crocodile

23rd July, 1pm - 4pm

An afternoon of storytelling and taking part in juggling, music making and clowning before putting it together into your own show to be performed at the end of the day. For ages 8 years +. £20 for the session.

Jungle Explorers

Monday 29th July – Friday 2nd August, 10am - 12noon

Grab your rucksack and pack your binoculars, we are about to go on an adventure! Come and join us every morning as we take a trek to the jungle. Mixing craft and drama we can inspect the insects and set up camp for a week of fun and games! For ages 5-6 years. £70 for the week.

Beastly Tales

Monday 5th – Friday 9th August, 10am - 2pm

Come and meet some familiar characters in a new and magical form! Spend a week exploring Vikram Seth's poetic fables; mixing music, poetry and performance. With a cast of animals from the smallest beetle to the largest elephant, you will be inspired to create your very own show. For ages 7-9 years. £85 for the week.

Foundation Course also available for 10 - 12 years, but full at time of print. There is a waiting list available.

Storm on the Lawn

Monday 5th August onwards (For ages 12 – 21 years)

Backstage places only: £150

Storm on the Lawn – An annual summer school for young actors and backstage crew at Prior Park College for three weeks culminating in seven public performances of Dracula in the 18th century Ball Court.

Curtain Up

The West Wing Roper Theatre, Hayesfield School,

Oldfield Park, Bath, BA2 3LA

Tel: 01761 239185

www.curtainup.org.uk/Summer-Schools/

Dance, act and sing for a performance at the end of each week. 29th July - 2nd August and the 19th - 23rd August 10am - 4pm. The performance is free to watch at 5pm on the Friday of each week. Courses are for ages 8 years +. £140 per child, £100 per additional sibling.

Stagecoach Bath

Hayesfield Upper School, Upper Oldfield Park, Bath, BA2 3LA

Tel: 01249 655900

www.stagecoach.co.uk/bath/holiday-camps.html

Summer workshop from the 12th - 16th August. Open to students from 6 - 18 years. Learn singing, dancing and acting and work towards a performance at the end of the week.

£125 and £75 for siblings.

Early Stages Workshop

Summer workshop from the 12th - 16th August for children 4 - 6 years. Learn singing, dancing and acting and work towards a performance at the end of the week.

£75 and £50 for siblings.

Annie jr – The Musical (Tracy King Theatre School)

Tel: 07990 527299.

www.tracykingtheatreschool.com/workshops.html

Work with a professional director, choreographer and musical director - and develop your skills whilst having a great time. Workshops are open to both TKTS and non-TKTS students aged 6 - 18 years and run from 9am - 4pm (Monday to Thursday) and 9am - 5pm on the Friday (contact for dates).

No experience or audition necessary - just lots of energy and enthusiasm!

£120 per child per week (additional children, £90 each)

Please email tracy@tkdance.co.uk for further details about the workshop, or contact her on 07990 527299.

Bath Abbey Summer Music School, Bath Abbey, BA1 1LT

Tel: 01225 422462

www.bathabbey.org/music/summer-music-school

5th - 9th August, 9.30am - 3.30pm

Morning workshops cover different styles of music including African drumming and dancing, steel pans and Indonesian Gamelan. Afternoon activities vary from singing, rhythm and rounds including an outdoor picnic. The course will end with a grand finale performing in a concert in the Abbey on the Friday afternoon. £150 for children aged 7 - 11 years.

**The Musical Treehouse, *the egg*,
Theatre Royal Bath, Sawclose, Bath, BA1 1ET
Tel: 07891 872343**

www.themusicaltreehouse.com

Morning sessions held at the egg theatre by the Musical Treehouse. Two sessions split into age groups.

7th August - Percussion and drums

14th August - Harps, bells and chimes

21st August - Clarinet and harmonica

£7 per session (£5 for siblings)

Outdoor activities

**Buttercup Barn Explores, Claysend Farm, Newton St Loe, Bath, BA2 9JE
Tel: 01225 874003**

www.buttercupbarndaynursery.co.uk

Monday, Tuesday and Friday 9.30am - 3.30pm for 4 - 11 years. Held in a private wood with dome tents, sawdust toilets, river damming, tree climbing, rope swings, total free play and lots of outdoor craft. £32 per day.

**Camp Teepee, Paragon School, Lyncombe House, Bath, BA2 4LT
Tel: 01225 310837**

www.paragonschool.co.uk

22nd - 26th July and 19th - 23rd August, all 9.30am - 4pm

Sessions for 6 - 11 year olds. Activities include campfire songs, wild drumming, woodland detective games, sculptures, clay creature crafting and much more.

£35 per day or £150 for five continuous days.

**Swainswick Explorer Days, Upper Swainswick House, Tadwick Lane,
Bath, BA1 8BU**

Tel: 01225 858251/07758 515092

www.playingoutdoors.org

10am – 4pm (with provision for an earlier drop off or later pick up at £6 per hour). The cost per day is £35.

Explorer Days are 6 hour 'play' hikes in the countryside for children aged 5 to 16 years.

During the days walks will go through different landscapes eating wild food, make a camp with a campfire, have opportunities for play and making things with tools and crafts. Older children can use more advanced tools for shaping freshly cut wood. All food for the day is included.

Sport

**Baskerville's Gymnastics and Fitness Centre,
Englishcombe Court, Englishcombe Lane, Bath, BA2 2EJ
Tel: 01225 330001**

www.baskervillesgym.co.uk

Courses 9.30am - 3.30pm and half-day options are sometimes available. Courses £28 per child per day. Specific courses for gymnasts available (please see website)

Circus Skills

Tuesday 6th August

A day exploring gymnastics through circus skills.

Gym Fusion

Wednesday 31st July or 14th August

A fun day which incorporates dance & gymnastic elements. At 3pm parents will be invited into the gym to watch the displays that the gymnasts and coaches have put together. Suitable for all levels and ages, boys and girls.

The Cube

Tuesday 13th August

The Cube will consist of exciting challenges that gymnasts of all ages and abilities will enjoy. Each gymnast starts with five lives and has to complete tasks to win a medal. Games will include balance, co-ordination and agility. The day is about fun and team work.

Bath Rugby Summer Camps

Spring Gardens Road, Bath, BA2 4DS

Tel: 01225 325200

www.bathrugby.com

27th, 28th and 29th August 7 - 12 years (male and female)

29th and 30th August 13 - 16 years (males only)

Cricket Bath Summer Holiday Course

Bath Cricket Club, North Parade Bridge Road, Bath, BA2 4EX

Tel: 07968 696914

www.bathcricket.com

Full day 9am - 3pm (£25) or half day 9am – 12noon or 12noon – 3pm (£15)

Whole week - £100

29th July – 2nd August

5th August – 9th August

12th August – 16th August

19th August – 23rd August

An opportunity to receive coaching from one of Cricketer Bath's professional coaches. Each day will focus on specific cricketing disciplines. This allows players to pick and choose how best to spend their time in the hands of the coaches who will help to take your game to the next level.

**Get Sported – Multi Sport Day Camp, Ralph Allen School, Claverton
Down, Bath, BA2 7AD**

Tel: 07528 689854

www.getsported.org

23rd - 26th July and 6th - 9th August (9.15am – 4pm) A Christian Sports Organisation operating camps for children aged 5 to 12 years. Enjoy football, cricket, rugby, basketball, ultimate frisbee, tennis and many others. (Non – sporty activities may be available during afternoons). Learn and improve sport skills with coaching and develop confidence through activities and team talk discussions centred around the curriculum. Take part in the Get Sported Championship!

Go Active Coaching Ltd,

St Mark's Secondary School, Bay Tree Road, Larkhall, Bath, BA1 6ND

Tel: 07801 993455

www.go-active.org

23rd July - September Tuesday, Wednesday and Thursday (please call for specific dates).

A range of activities available including street dance, urban polo, cheerleading, football, rounders, multisport, basketball and more. For ages 4 - 14 years.

Price unavailable at time of print.

**FISH Trampoline Camp, Hayesfield School, Upper
Oldfield Park, Bath, BA2 3LA**

Tel: Simon or Petra on 07814 545111

<http://fishtrampolineclub.com/>

Aged 5 years - adult? Want to do something different this holiday? Then why not try FISH Trampoline Camp? Learn new skills and have a good time bouncing your way through the school holidays. With lots of games to play and challenges to smash this camp will keep you busy all day. £15 per day.

**Neil Murray Tennis Holiday Camps, Bloomfield Tennis and Bowls Club, 98
Wellsway, Bath, BA2 4SD.**

Tel: 07877 933564

www.neilmurraytennis.co.uk

Camps for 5 - 13 year olds:

29th July - 1st August

12th - 15th August

20th - 29th August

All sessions 10am - 3.30pm. £90 for 4 days, £60 for 2 days.

10% discount for siblings.

Lansdown Summer School, Northfields, Bath, BA1 5TN

Tel: 01225 425763

www.lansdownclub.co.uk

15th - 19th July

Munchkins 10am - 1pm, 5 - 8 years

22nd - 26th July

Warriors 10am - 4pm, 9 - 12 years

29th July - 2nd August

Allstars 10am - 4pm, 10am - 4pm

5th - 9th August

19th - 23rd August

27th - 30th August

Holiday tennis camps enable boys and girls of all abilities aged between 5 -13 years, to develop their tennis skills in a fun-filled, action - packed environment!

Monkton Combe School, Bath, BA2 7HG

Tel: 01225 833363

www.monktoncombeschool.com/index.php?id=166

Swimming and other activities including holiday camps:

10% discount when booking 5 whole days in any one week:

Monkton Minis – 10th July to the 23rd August, 8.30am – 5.45pm (4 – 8 years)
£29.50 per day.

Pick and Mix – Arts and crafts and sport. 29th July to the 23rd August, 8.30am – 5.45pm (8 – 14 years) £29.50 per day.

Monkton Swim Camp

27th - 29th August

A 3 day Swim Camp aimed at swimmers who wish to push their ability to the next level. Focus is on technique with pool and dry land training. Attendees will have their skills

analysed individually and coaching staff will provide guidance on stroke, technique and nutrition. The course is ideally aimed at boys and girls that currently swim, or who wish to swim at pre-competition or competition level. For children aged 9 -15 years (10.00am to 4.30pm). £169.00

If your chosen course does not commence from 8.30am or finish at 5.45pm an early and late stay is available.

Bath Rugby Up & Unders Coaching

20th - 22nd August, 10am, - 12.30pm (8 - 14 years)

Sessions are focussed on motor skills, coordination, balance, spatial awareness, knowledge of colours, numbers and shapes, sharing and listening, along with introductory rugby skills; passing, catching and kicking. £58 per course.

Create a Play in a Week - Character's Stage School

12th - 16th August, 10am - 4pm (8 - 15 years)

An opportunity to work with a professional director to produce a performance at the end of the week. The course looks at drama, dance, music and song.

Come Bake With Us, Chocolate Heaven!

31st July - 1st August 9.30am - 4pm (10 - 14 years)

Chef taught recipes teaching nutrition in a fun way and providing life skills. £77 per course

Rookie Lifeguard

29th - 31st July

This 3 day course is designed for 8 – 14 year olds who want to know how to save themselves and other people. The award contains survival, rescue and sports skills, as well as life support and water safety elements in a fun and absorbing way. Children who have passed ASA Stage 6 will have fulfilled all criteria to join the course. Please call for more details of prerequisites in order to take part on the course. 1.00pm to 4.30pm for three days £72.00.

**Paul Hull Summer Rugby Camp,
Chew Valley Rugby Club, Chew Lane, Chew Stoke,
Bristol, BS40 8UE**

Tel: 07971 032251

paulhull@hotmail.co.uk

www.pitchero.com/clubs/chewvalley/news/paul-hull-rugby-camp-859984.html

12th - 16th August 9.30am - 3.30pm. Coaching available for 8 - 11 years and 12 - 14 years. £125 for the five days.

**Shine Sports Coaching, Wellsway School, Chandag Road, Keynsham,
Bristol, BS31 1PH**

Tel: 07535 884588

www.shinessportscoaching.com

23rd - 25th July

30th July - 1st August

6th - 8th August

13th - 15th August

20th - 22nd August

27th - 29th August

Courses in football (4 - 12 years, cricket (6 - 14 years) and Olympic multisport (4 - 12 years).

Sessions are 10am - 3pm, but there is an extension option from 8.30am - 5.30pm, £15 per day, or £40 for three days.

Team Bath, Bath University, Bath, BA2 7AY

Tel: 01225 386915

www.teambath.com/tribe-schools/holiday-activities

Summer sport specific programmes including: Badminton, Hockey, Trampolining and Athletics. Activities for 7 – 14/15 years. In addition, Trampolining Tots is available on the 25th July and the 1st, 15th and 22nd of August for ages 2 – 6 years (10am – 11am and 11am - 12noon) £3.75 per child.

Wesport

www.wesport.org.uk/

The West of England Sport Trust (Wesport) works as both an Independent Registered Charity through the Wesport Core Team as well as a network of organisations in the West of England with a vision to collectively to increase, promote, support and celebrate lifelong participation in sport and physical activity helping to realise potential for all. This includes an events calendar across the West of England. You can also search for sports and activities local to you on the following web link: <http://getactive.wesport.org.uk/>

Children's Centres

Children's Centres offer all families and children a range of services, information and support in their local community. Monthly 'What's On' calendars are available for all:

www.bathnes.gov.uk/services/children-young-people-and-families/childrens-centres

Groups and activities taking place at the Children's Centres during the summer period:

Free

Chew Valley Children's Centre

Chew Lane, Chew Magna, Bristol, BS40 8QA

Tel: 01225 395455

chewvalley_childrenscentre@bathnes.gov.uk

Dad's Stay and Play - 3rd Saturday of the month 10am - 12noon

Messy Play - 2nd and 4th Tuesday of the month 9.45am - 11.30am

First Steps Children's Centres

First Steps Moorlands, Moorfields Road, Bath, BA2 2DQ

Tel: 01225 317123

moorlandsc@firststepsbath.org.uk

First Steps Twerton, Woodhouse Road, Bath, BA2 1SY

Tel: 01225 444791

twertoncc@firststepsbath.org.uk

First Steps Dominion Road, Bath, BA2 1DF

Tel: 01225 314111

Stay and Play 0-5 years (31st July, 10am - 11.45am)

Dominion Road address

Holiday Stay and Play (7th August, 10am - 11.45am)

Dominion Road address

Trip to Roves Park, Swindon (14th August) Meet at First Steps Dominion Road, at 9am. If you would like to attend, please make payment to Mandy Wraight by calling 01225 314111.

Trip to Bath City Farm (21st August 10am – 2pm). Meet at Bath City Farm any time after 10.00am. Bring your own picnic.

Trip to Sandpits play area, Bath (28th August 10am – 2pm) Meet at Sandpits Park any time after 10am.

Bumps and Babies - For pregnant women and partners and parents/carers with children up to 18 months.

29th July, 10am - 11.30am - Dominion Road address

30th July, 10am - 11.30am - Moorlands Infants School, BA2 2DQ

Keynsham Children's Centre

65 West View Road, Keynsham, Bristol, BS31 2UE

Tel: 01225 395400

Keynsham_childrenscentre@bathnes.gov.uk

Stay and Play - Holiday Fun! Thursdays 9.30am - 11am

Sessions for 0 - 11 years:

25th July - Castle Primary School

1st August - Downfields Park

8th August - Queen's Road Park

15th August - Keynsham Children's Centre

22nd August - Keynsham Memorial Park

29th August - Castle Primary School

Somer Valley Children's Centres

Tel: 01225 396660

somervalley_childrenscentre@bathnes.gov.uk

- Midsomer Norton Children's Centre, Pows Orchard, Midsomer Norton, Radstock, BA3 2HY
- Paulton Children's Centre - With on site nursery (Footsteps Nursery 01761 415535)
Plumptree Close, Paulton, Bristol, BS39 7QY
- Peasedown St John Youth and Children's Centre, Bath Road, Peasedown St John, Bath, BA2 8DH
- Radstock Youth and Children's Centre, Church Street, Radstock, BA3 3QQ
- Westfield Children's Centre, Westfield Primary School Annex, Longfellow Road, Radstock, BA3 3XX

Orchard Vale Community Hall, Woodside, Midsomer Norton, BA3 2RT

Second Saturday Group - 13th July and 10th August at 10.30am – 12.30pm.

Join in the fun with a selection of activities to suit all ages (families with children 0 - 8 years) such as messy play, singing, stories and physical play. A light lunch is provided.

Calling all Dads, Step dads, Uncles, Grandfathers or significant males.

Would you like to cook some fun recipes with your child or children (2-8yrs) on a Saturday morning?

The Children's Centre will be running 5 consecutive Saturday sessions in the Radstock area starting on the 13th July from 10.30am - 12.30pm.

If you are interested please phone 01225 831852 or email jed_parsons@bathnes.gov.uk

Parkside Children's Centre

Charlotte Street, Bath, BA1 2NE

Tel: 01225 396662

parkside_childrenscentre@bathnes.gov.uk

Babyzone - Wednesdays 1pm - 3pm

Stay and Play - Thursdays 10am - 12noon

Playschool (0-5 years) - Fridays 10am - 12noon

St Martin's Garden Children's Centre

150 Frome Road, Odd Down, Bath, BA2 5RE

Tel: 01225 396002

stmartins_gardenchildrenscentre@bathnes.gov.uk

Babyzone - Wednesdays 1pm - 2.30pm

Stay and Play - Thursdays 10am - 12noon

Weston Children's Centre

Penn Hill Road, Weston, Bath, BA1 4EH

Tel: 01225 396034

weston_childrenscentre@bathnes.gov.uk

Dad's Stay and Play - 20th July, 17th August and 21st September.

Babyzone - Wednesdays 1.30pm - 3pm

Stay and Play - Thursdays 10am - 12noon

The Children's Centres will still be open to offer families support services.

One off Events

Weston-super-Mare Sand Sculpture Festival 2012

29th March – the end of September

Weston-super-Mare beach

Tel: Weston Tourist Information Service 01934 417117

www.westonsandsculpture.co.uk

This year's theme is 'Hollywood'; look out for famous film stars, marvel at your favourite movies and become part of the iconic scenes from the last century.

Adults £3.50

Children £2.00 - Children under 3 years go free.

Families £10.00

Little People at the Little Theatre Cinema

St Michael's Place, Bath, BA1 1SG

www.picturehouses.co.uk/cinema/The_Little/

Summer Kids Club at Komedia, Westgate Street, Bath, BA1 1EP. Activities for children start daily at 1.30pm followed by a film at 2pm.

22nd - 26th July - The Croods 2D

29th July - 2nd August - My Neighbour Totoro

5th - 9th August - Epic 2D

12th - 16th August - Ernest and Celestine

19th - 23rd August - Robosapien

26th - 30th August - Alvin and the Chipmunks - Chipwrecked

Tickets are £1 for members, (membership costs £4 for a year) or £3 for non members. One accompanying adult is the same prices as a child. Children over 8 can be left with the staff team.

Gromit Unleashed

www.gromitunleashed.org.uk

1st July - 8th September

Aardman Animation's Gromit is a part of a public art exhibition where giant sculptures of Gromit have been decorated by invited artists and are on the streets of Bristol and the surrounding area to view. At the end of the trail, the sculptures will be auctioned to raise funds for Wallace and Gromit's Grand Appeal, the Bristol Children's Hospital charity. Maps are available to download or collect from The Mall Cribbs Causeway, M Shed, Tourist Information, Windmill Hill City Farm and @ Bristol. Shops are available at these locations selling Gromit merchandise.

Free

**The Boy who Cried Wolf! and other stories from
Michael Morpurgo's Aesop's Fables**
Theatre Royal, King Street, Bristol, BS1 4ED
Tel: 0117 9877877

www.bristololdvic.org.uk

Watch theatre in the open air outside of the theatre. Open daily 2pm and 7pm and on Sundays, 1pm and 5pm. Each show has £10 tickets for sale on a first come first served basis. Once sold there is a £10 discount for a further 50 tickets. Otherwise tickets are £20 Monday - Thursday for children, or £22 Friday - Sunday.

Carter's Steam Fair

2nd – 4th August 2013

Royal Victoria Park, Bath

www.carterssteamfair.co.uk/

Carter's Steam Fair is a family-run authentic steam fair complete with dodgems, helter skelter, steam yachts and for the thrill seekers a Wall of Death Stunt Show. For small children there will be special rides which include a Train Ride, Scenic Dobbies and Austin Cars. Entry is free, rides separately priced.

Bath City Farm, Kelston View, Bath, BA2 1NW

Tel: 01225 481269

www.bathcityfarm.org.uk

No charge, but donations requested. The farm is accessible through the gates and over stiles around the site. The car park is open from 9am - 5pm Monday - Saturday. There is a café and farm shop on site.

20th and 21st July - **Metta Theatre** - Meet Monkey and Crocodile and watch Metta Theatre bring an old Indian fable of friendship and betrayal to life. Fun for all the family (ages 3 +). It features an aerial circus, acrobatics, juggling, skateboarding and live music. Tickets £5.

Free events

Free

27th July - **Take a walk on the wild side** - walk in the wetlands and explore the farm's plants and creatures in the wet and boggy areas (2pm - 3.30pm).

17th August - **Bath Folk Festival**, 11am - 3pm

24th August - **Bat Walk** - Explore the woodland habitats looking for bats – a great way to see a different side of the Farm!

26th August - **Bank Holiday BBQ and Bouncy Castle** 12noon - 2pm

Odd Down Cycling Circuit, Odd Down Playing Fields, Bath, BA2 2PR

www.bathnes.gov.uk/services/sport-leisure-and-parks/health-and-fitness/cycling

A brand new specially designed circuit 1.5km long. Family events arranged where an instructor will be present to sign people in; to make sure there are not too many participants on the circuit at any one time; enforce the code of conduct; assist with bike maintenance issues; offer informal coaching tips and deal with any first aid issues:

22nd July - 12noon - 6pm

29th July - 12noon - 6pm

1st August - 3pm - 4pm

5th August - 12noon - 6pm

8th August - 3pm - 4pm

12th August - 12noon - 6pm

15th August - 3pm - 4pm

19th August - 12noon - 6pm

22nd August - 3pm - 4pm

26th August - 12noon - 6pm

29th August - 3pm - 4pm

Sessions £3 per person, plus £1 to borrow one of the limited bikes available.

Wheels for All

Tel: 01225 396433

www.bathnes.gov.uk/wheelsforall

Inclusive cycle sessions for disabled children and adults with differing needs.

27th July - **July Saturday Club** - Odd Down Cycling Circuit Try out trikes, hand cycles and tandems that suit a wide range of needs. £3 per person or £1.50 using own bike.

3rd, 10th, 17th and 24th August - **August Saturday Club** - Odd Down Cycling Circuit. £3 per person or £1.50 using own bike.

Super Summer Wheelie Road shows!

Free drop in sessions with the bikes and trikes:

7th August - National Play Day, Keynsham Memorial Park

11am - 4pm

13th August - Peasedown St John Beacon Field, 10.30am - 1pm

20th August - Somer Valley Play Park, 10.30am - 1pm

21st August - Two Tunnels Greenway, Bloomfield, Bath

**Fun Science, Ascension Church Hall, Claude Lane,
Oldfield Park, Bath, BA2 1AG**

Tel: 07708 214840

www.fun-science.org.uk

Sessions aimed at 5 - 11 year olds. 5th - 7th August, 9am - 3pm

5th August - Chemical Reactions

6th August - Rockets, Planes and Structures

7th August - Electricity

£16 for one session, or £45 for all three.

Avon Gorge and Wildlife Project

Tel: 0117 9030609

www.avongorge.org.uk

Holiday workshops for 8-12 year olds, £8.50 per child/session, 10am - 3.30pm:

1st August - Animal adventures

8th August - Wild works of art

15th August - Ladybird spotters

Bristol Zoo, Clifton, Bristol, BS8 3HA

Tel: 0117 9747399

www.bristolzoo.org.uk

20th July - The Lion King 5pm (U rating)

Ghostbusters 8pm (PG rating)

3rd August - A Bug's Life 5pm (U rating)

The Goonies 8pm (PG rating)

17th August - Happy Feet 5pm (U rating)

Babes in the Wood Forest School

Tel: 07881 961145

www.babesinthewoodforestschool.org.uk

Forest adventure days for under 5s on Wednesdays and on Thursdays for 5 - 8/9 year olds, 11am - 2.30pm. Adult supervision is required at all times.

Fire Forest School Week

31st July - Outdoor cooking for under 5 year olds and siblings

1st August - How to make a fire, outdoor cooking and forest school adventures for over 5s and siblings.

Earth Forest School Week

7th August - Bug hunting, and den building for under 5 year olds and siblings.

8th August - Bug hunting, and den building for over 5 year olds and siblings.

Water Forest School Week

14th August - Pond dipping and water play for under 5 year olds and siblings.

15th August - Pond dipping and water play, and den building for over 5s and siblings.

£15 per family (up to 2 adults and 2 children) Concessions available this year for unemployed or low income families (£5 per family).

Bath Area Play Project (BAPP)

Tel: 01225 832479

www.bapp.org.uk

There are a series of play sessions with the Community Play Rangers. For dates and times please see page 50.

Free

**Bath Area Play Project's National Playday –
Wednesday 7th August**

Queen Square, Bath, 12noon - 3pm

Play opportunities run by Bath Area Play Project

Lots of family fun, with live music, circus skills, balloon-modelling, den-building, dancing, inflatables and much more.

www.playday.org.uk



The Community Bus

Tel: 01761 419557

www.thecommunitybus.org.uk

communitybus@hotmail.co.uk

Various sessions, for information please see page 47.

Wansdyke Play Association

Tel: 01761 420660

www.wpa-play.com

Various sessions, for information, please see page 48.

Bristol Balloon Fiesta

www.bristolballoonfiesta.co.uk

8th – 11th August

Free

A free event (but car parking costs £10 on the day, £6 in advance) at Ashton Court, Bristol, BS41 9JN. There will be four days of ballooning fun including: balloon ascents, Red Arrow displays, night glows with fireworks, entertainment and much more.

Bristol International Kite Festival

www.kite-festival.org.uk

31st August - 1st September, 11am - 5pm each day. A free festival of kite displays throughout the weekend and even some kite flying demonstrations at Ashton Court, Bristol. It is one of Europe's largest kite festivals with giant 3D characters and synchronised stunt routines. Children's workshops available.

Free

Gifford's Circus

22nd – 26th August 2013

Alice Park, Bath

www.giffordscircus.com

Founded in 2000, Gifford's is a family-run circus whose aim is to create a "village green circus" for rural families. Known for its inspiring musicality, beautifully painted wagons and use of birds, horses and motorbikes in their breath-taking shows, this is something not to be missed.

22nd – 5pm, 7.30pm

23rd – 5pm, 7.30pm

24th – 11am, 2.30pm, 7.30pm

25th – 11am, 2.30pm, 5pm

26th – 4pm

Adults - £21, Children - £14, Under 3s – Free

Bath Cats and Dogs Home, Claverton Down, BA2 7AZ

Tel: 01225 787334

www.bathcatsanddogshome.org.uk

26th August (11am - 4pm)

Action-packed day of fun and entertainment for the whole family, including: dog shows, kids' zone with bouncy castle, face painting, refreshments and much more.

**Southside Family Fun Day, Stothert and Pitt RFC, Bristol Road, Corston,
Bath, BA2 9DJ**

Tel: 01225 331243

31st August, 11am - 3pm

Contact for more information.

Keynsham Youth Fest

Keynsham Memorial Park

Tel: 0117 9868683

Saturday 21st September, 12noon - 5pm.

The festival's aim is to allow the many youth organisations of Keynsham to come together to show off their skills and talents and raise the awareness of the positive opportunities that are available for young people to participate in. Please contact Mark Willcox youthworker@keynsham-tc.gov.uk or call on the above number if you would like more details or if your organisation would like to get involved in the festival.

Billy Smart's Circus

24th – 29th September 2013

Royal Victoria Park

www.billy-smarts-circus.co.uk

The 2013 UK tour is brimming with a dazzling combination of theatre, music and dance. International artistes bring a mix of acrobatics, comedy, juggling, illusion and aerial feats. There are no animals and quality and innovation are at the top of the agenda. See website for tickets and times.

For more information on activities and events, visit our 'What's On Calendar' at: www.1bigdatabase.org.uk The website offers information for families across Bath and North East Somerset, Bristol and South Gloucestershire. For a list of general holiday schemes across the summer please contact the Family Information Service (details over page).

If you would like a paper copy of this publication, please use the contact details on the following page.

Family Information Service

The Family Information Service is an award winning, quality accredited information service for parents and carers of children and young people aged 0 to 20 years.

The Family Information Service also provides information on:

- Out of school and holiday childcare
- Childminders, nurseries and pre schools
- Leisure activities
- Baby and toddler groups
- Play opportunities
- Specific information for children and young people with additional needs
- Working with children

FIS also works closely with families who do not have a regular wage or income, by offering one to one appointments and drop in sessions at local Children's Centres. At an appointment a family will be able to check that they are claiming all the benefits they are entitled to and be supported to access debt and housing advice, free school meals, specific benefits information and appropriate legal services. Date/times of the sessions at Children's Centres are available from FIS.

Please contact 0800 073 1214 or email: fis@bathnes.gov.uk

Local number: 01225 395343

Text: 07980 998906

www.bathnes.gov.uk/fis

www.1bigdatabase.org.uk

Follow our Facebook page for daily information:

www.facebook.com/bathnesfis

Please let us know of any changes that need to be made to the details of your organisation. If you would like your facility, club or organisation mentioned in this booklet, please contact us and we will include you next year.

**FIS cannot recommend or endorse any facility in this booklet and do not
accept responsibility for the
accuracy of the information in this booklet.**

Freephone 0800 073 1214

Local number 01225 395343

Text 07980 998906

fis@bathnes.gov.uk

www.bathnes.gov.uk/fis

Follow us on Facebook: www.facebook.com/bathnesfis

www.1bigdatabase.org.uk

This booklet can be made available in a range of languages, in large print,
Braille, on tape, electronic and in accessible formats from 0800 073 1214 or
Textphone 07980 998906

