

WILDLIFE AND COUNTRYSIDE ACT 1981

CITY OF BATH DEFINITIVE MAP AND STATEMENT

BATH AND NORTH EAST SOMERSET COUNCIL
CITY OF BATH DEFINITIVE MAP AND STATEMENT MODIFICATION ORDER
(No. 17 – WIDCOMBE) 2019

This Order is made by Bath and North East Somerset Council under section 53(2)(b) of the Wildlife and Countryside Act 1981 ('the Act') because it appears to that authority that the City of Bath Definitive Map and Statement require modification in consequence of the occurrence of an event specified in section 53(3)(c)(i), namely, the discovery by the authority of evidence which (when considered with all other relevant evidence available to them) shows that rights of way which are not shown in the map and statement subsist or are reasonably alleged to subsist over land in the area to which the map relates, being rights of way such that the land over which the rights subsist are public paths and an event specified in section 53(3)(c)(iii) namely, the discovery by the authority of evidence which (when considered with all other relevant evidence available to them) shows that any other particulars contained in the map and statement require modification.

The authority has consulted with every local authority whose area includes the land to which the order relates. The Bath and North East Somerset Council hereby order that:

1. For the purposes of this order the relevant date is 1st March 2019.
2. The City of Bath Definitive Map and Statement shall be modified as described in Part I and Part II of the Schedule and shown on the map attached to the Order.
3. This order shall take effect on the date it is confirmed and may be cited as the Bath and North East Somerset Council City of Bath Definitive Map and Statement Modification Order (No. 17 – Widcombe) 2019.

Given under the Common Seal of the Bath and North East Somerset Council the 21st day of March 2019.

The COMMON SEAL of the
BATH AND NORTH EAST SOMERSET
COUNCIL

was hereunto affixed
in the presence of:-

Comi-Ann R. R.

Authorised signatory



9894
CAE

The foregoing order is hereby confirmed
27 JAN 2022

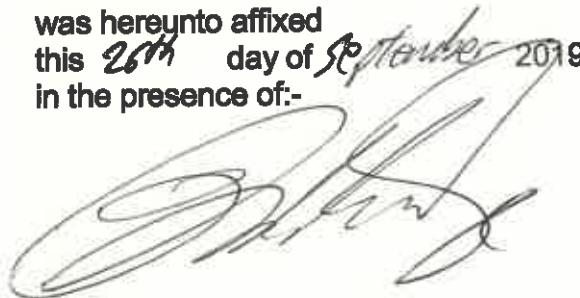
Gareth W Thomas

An Inspector appointed by The Secretary of
State for Environment, Food and
Rural Affairs

In pursuance of its powers conferred by Schedule 15 of the Wildlife and Countryside Act 1981, the Council confirms the above Order. However, that part of the order which relates to Footpaths BC53/5, BC53/6 and BC64/7 is to be treated as having been severed from this order and will be treated as a separate order. It will therefore not form part of this order for confirmation purposes.

The COMMON SEAL of the
BATH AND NORTH EAST SOMERSET
COUNCIL

was hereunto affixed
this *26th* day of *September* 2019
in the presence of:-



Authorised signatory



SCHEDULE

PART I

Modification of Definitive Map

Description of paths or ways to be added

BC53/4

A public footpath commencing at a step at a junction with Church Street at Grid Reference ST 7593 6373 (Point A on the map numbered Part 1, attached to this Order) and proceeding in a generally south-easterly direction for approximately 165 metres to Grid Reference ST 7603 6360 (Point B on the Order Map). The footpath turns in a generally easterly direction for approximately 47 metres to steps at Grid Reference ST 7608 6360 (Point C on the Order Map). The footpath continues up the steps for approximately 17 metres to where the steps end at Grid Reference ST 7609 6359 (Point D on the Order Map). The footpath continues for approximately 1 metre to a junction with Church Lane at Grid Reference ST 7610 6360 (Point E on the Order Map).

BC53/5

A public footpath commencing from a junction with Lyncombe Vale Road at Grid Reference ST 7510 6344 (Point A on the map numbered Part 2, attached to this Order) and proceeding in a generally easterly direction for approximately 78 metres to a junction with Public Footpath BC53/6 at Grid Reference ST 7518 6343 (Point B on the Order Map). The footpath continues for approximately 57 metres to Grid Reference ST 7523 6343 (Point C on the Order Map). The footpath turns in a generally east-south-easterly direction for approximately 51 metres to Grid Reference ST 7528 6341 (Point D on the Order Map). The footpath turns in a generally southerly direction for approximately 12 metres to Grid Reference ST 7528 6340 (Point E on the Order Map). The footpath turns in a generally westerly direction for approximately 40 metres to Grid Reference ST 7524 6339 (Point F on the Order Map). The footpath turns in a generally south-westerly direction for approximately 15 metres to a junction with Public Footpath BC53/6 at Grid Reference ST 7523 6339 (Point G on the Order Map).

BC53/6

A public footpath commencing from a junction on Lyncombe Vale Road at Grid Reference ST 7518 6345 (Point A on the map numbered Part 3, attached to this Order) and proceeding in a generally south-south-westerly direction up steps for approximately 19 metres to a junction with Public Footpath BC53/5 at Grid Reference ST 7517 6343 (Point B on the Order Map). The footpath continues for approximately 29 metres to where the steps end at Grid Reference ST 7516 6341 (Point C on the Order Map). The footpath turns in a generally east-south-easterly direction for approximately 76 metres to a junction with public footpath BC53/5 at Grid Reference ST 7523 6339 (Point D on the Order Map). The footpath turns in a generally south-south-westerly direction for approximately 19 metres to a pedestrian gate at Grid Reference ST 7522 6337 (Point E on the Order Map). The footpath continues for approximately 11 metres to Grid Reference ST 7522 6336 (Point F on the Order Map). The footpath turns in a generally southerly direction for approximately 173 metres to steps and a pedestrian gate at Grid Reference ST 7524 6319 (Point G on the Order Map). The footpath continues for approximately 3 metres to Grid Reference

ST 7524 6318 (Point H on the Order Map). The footpath turns in a generally south-easterly direction for approximately 135 metres to a junction with Fox Hill at Grid Reference ST 7535 6311 (Point I on the Order Map).

BC53/7

A bridleway commencing from a junction on Blind Lane at Grid Reference ST 7585 6334 (Point A on the map numbered Part 4, attached to this Order) and proceeding in a generally southerly direction for approximately 276 metres to a junction with Public Footpath BQ52 at Grid Reference ST 7581 6308 (Point B on the Order Map). The bridleway continues for approximately 233 metres to a junction with Public Footpath BC52/8 at Grid Reference ST 7584 6285 (Point C on the Order Map). The bridleway continues for approximately 7 metres to a junction with Public Bridleway BC52/2 at Grid Reference ST 7585 6285 (Point D on the Order Map).

BC54/41

A public footpath commencing from a junction with Broadway at Grid Reference ST 7558 6455 (Point A on the map numbered Part 5, attached to this Order) and proceeding in a generally north-north-easterly direction for approximately 24 metres to Ferry Lane at Grid Reference ST 7558 6458 (Point B on the Order Map).

BC54/42

A public footpath commencing from a junction with Pulteney Road at Grid Reference ST 7566 6441 (Point A on the map numbered Part 6, attached to this Order) and proceeding in a generally south-easterly direction for approximately 44 metres to Public Footpath BCTOW/2 at Grid Reference ST 7569 6440 (Point B on the Order Map).

BC54/44

A public footpath commencing from a junction with The Tynning at Grid Reference ST 7582 6429 (Point A on the map numbered Part 7, attached to this Order) and proceeding in a generally easterly direction for approximately 70 metres to Horseshoe Walk at Grid Reference ST 7589 6430 (Point B on the Order Map).

BC54/45

A public footpath commencing at a junction with Claverton Street at Grid Reference ST 7537 6422 (Point A on the map numbered Part 8, attached to this Order) and proceeding in a generally south-south-westerly direction up steps for approximately 10 metres to Grid Reference ST 7537 6421 (Point B on the Order Map). The footpath continues for approximately 3 metres to Grid Reference ST 7537 6421 (Point C on the Order Map). The footpath turns in a generally south-easterly direction for approximately 53 metres to Armes Court at Grid Reference ST 7541 6418 (Point D on the Order Map).

BC54/47

A public footpath commencing from a junction with Calton Gardens at Grid Reference ST 7512 6413 (Point A on the map numbered Part 9, attached to this Order) and proceeding in a generally northerly direction for approximately 5 metres to steps at Grid Reference ST 7512 6414 (Point B on the Order Map). The footpath continues for approximately 27 metres to Grid Reference ST 7512 6416 (Point C on the Order Map). The footpath turns in a generally west-north-westerly direction for approximately 8 metres to Grid Reference ST 7511 6417 (Point D on the Order Map). The footpath turns in a generally northerly direction for approximately 3 metres to where the steps end at Grid Reference

ST 7511 6417 (Point E on the Order Map). The footpath continues for approximately 21 metres to steps at Grid Reference ST 7511 6419 (Point F on the Order Map). The footpath continues for approximately 3 metres to St Mark's Road at Grid Reference ST 7511 6419 (Point G on the Order Map).

BC54/48

A public footpath commencing from a junction with Millbrook Place at Grid Reference ST 7547 6418 (Point A on the map numbered Part 10, attached to this Order) and proceeding in a generally east-south-easterly direction for approximately 10 metres to Grid Reference ST 7548 6418 (Point B on the Order Map). The footpath turns in a generally south-easterly direction and continues for approximately 64 metres to Prior Park Cottages at Grid Reference ST 7552 6413 (Point C on the Order Map).

BC54/49

A public footpath commencing from a junction with Calton Road at Grid Reference ST 7530 6416 (Point A on the map numbered Part 11, attached to this Order) and proceeding down steps in a generally south-south-easterly direction for approximately 1 metre to where the steps end at Grid Reference ST 7530 6416 (Point B on the Order Map). The footpath continues for approximately 63 metres to steps at Grid Reference ST 7531 6410 (Point C on the Order Map). The footpath continues down the steps for approximately 1 metre to Alexandra Road at Grid Reference ST 7531 6410 (Point D on the Order Map).

BC54/50

A public footpath commencing from a junction with Prior Park Road at Grid Reference ST 7561 6403 (Point A on the map numbered Part 12, attached to this Order) and proceeding in a generally north-easterly direction for approximately 59 metres to steps at Grid Reference ST 7566 6406 (Point B on the Order Map). The footpath continues up the steps for approximately 2 metres to Clarendon Road at Grid Reference ST 7566 6406 (Point C on the Order Map).

BC63/1

A public footpath commencing at a junction with Church Lane at Grid Reference ST 7612 6354 (Point A on the map numbered Part 13, attached to this Order) and proceeding in a generally south-south-easterly direction for approximately 151 metres to Grid Reference ST 7619 6341 (Point B on the Order Map). The footpath turns in a generally southerly direction for approximately 50 metres to steps at Grid Reference ST 7617 6337 (Point C on the Order Map). The footpath continues up the steps for approximately 5 metres to where the steps end at a squeeze stile at Grid Reference ST 7617 6336 (Point D on the Order Map). The footpath continues for approximately 3 metres and turns in a generally easterly direction at Grid Reference ST 7617 6336 (Point E on the Order Map). The footpath continues for approximately 37 metres and turns in a generally south-south-easterly direction at Grid Reference ST 7621 6336 (Point F on the Order Map). The footpath continues for approximately 284 metres to a kissing gate at Grid Reference ST 7643 6319 (Point G on the Order Map). The footpath continues for approximately 1 metre to a junction with public footpath BC63/5 at Grid Reference ST 7643 6319 (Point H on the Order Map). The footpath continues for approximately 2 metres and turns in a generally southerly direction at Grid Reference ST 7643 6318 (Point I on the Order Map). The footpath continues through Grid Reference ST 7644 6311 (Point J on the Order Map) for approximately 252 metres to Grid Reference ST 7645 6295 (Point K

on the Order Map). The footpath turns in a generally easterly direction and continues for approximately 167 metres to Grid Reference ST 7661 6293 (Point L on the Order Map). The footpath continues in a generally northerly direction for approximately 22 metres to Grid Reference ST 7662 6295 (Point M on the Order Map). The footpath continues in a generally easterly direction for approximately 11 metres to a junction with Restricted Bridleway BC62/1 at Grid Reference ST 7663 6295 (Point N on the Order Map).

BC63/3

A public footpath commencing from a junction with Widcombe Hill at Grid Reference ST 7647 6389 (Point A on the map numbered Part 14, attached to this Order) and proceeding in a generally east-south-easterly direction for approximately 335 metres to a kissing gate at a junction with Restricted Byway BC62/1 at Grid Reference ST 7678 6378 (Point B on the Order Map).

BC63/4

A public footpath commencing from a junction with Public Footpath BC63/5 at Grid Reference ST 7665 6339 (Point A on the map numbered Part 15, attached to this Order) and proceeding in a generally east-north-easterly direction for approximately 4 metres to steps at Grid Reference ST 7665 6339 (Point B on the Order Map). The footpath continues up the steps for approximately 46 metres to where the steps end at Grid Reference ST 7669 6341 (Point C on the Order Map). The footpath continues for approximately 72 metres to a junction with Restricted Byway BC62/1 at Grid Reference ST 7675 6344 (Point D on the Order Map).

BC63/5

A public footpath commencing from a junction with Public Footpath BC63/1 at Grid Reference ST 7643 6319 (Point A on the map numbered Part 16, attached to this Order) and proceeding in a generally north-easterly direction for approximately 303 metres to a junction with Public Footpath BC63/4 at Grid Reference ST 7665 6339 (Point B on the Order Map).

BC64/7

A public footpath commencing from a junction with Public Footpath BC54/40 at Grid Reference ST 7620 6417 (Point A on the map numbered Part 17, attached to this Order) and proceeding in a generally west-south-westerly direction for approximately 180 metres to Grid Reference ST 7604 6414 (Point B on the Order Map). The footpath turns in a generally south-easterly direction and continues for approximately 364 metres to Grid Reference ST 7631 6393 (Point C on the Order Map). The footpath turns in a generally southerly direction and continues for approximately 11 metres to Widcombe Hill at Grid Reference ST 7632 6392 (Point D on the Order Map).

PART II

Modification of Definitive Statement

Variation of particulars of path or way

A new statement for BC53/4 shall be recorded as follows:

Status: Footpath
Length: Approximately 230 metres
Ward / Parish: Widcombe
Width: Varies between 2.5 metres – 5.0 metres as shown shaded grey on the map numbered Part 1 included in the Bath and North East Somerset Council, City of Bath Definitive Map and Statement Modification Order (No.17 – Widcombe) 2019.
Limitations: None

| Description of Route | |
|-----------------------------|-----------------------------|
| From | To |
| County Road or Right of Way | County Road or Right of Way |
| Church Street | Church Lane |
| ST 7593 6373 | ST 7610 6360 |

General Description:

A public footpath commencing at a step at a junction with Church Street at Grid Reference ST 7593 6373 and proceeding in a generally south-easterly direction for approximately 165 metres to Grid Reference ST 7603 6360. The footpath turns in a generally easterly direction for approximately 47 metres to steps at Grid Reference ST 7608 6360. The footpath continues up the steps for approximately 17 metres to where the steps end at Grid Reference ST 7609 6359. The footpath continues for approximately 1 metre to a junction with Church Lane at Grid Reference ST 7610 6360.

PART II
Modification of Definitive Statement
Variation of particulars of path or way

A new statement for BC53/5 shall be recorded as follows:

Status: Footpath
Length: Approximately 253 metres
Ward / Parish: Widcombe
Width: Varies between 1.6 metres – 3.8 metres as shown shaded grey on the map numbered Part 2 included in the Bath and North East Somerset Council, City of Bath Definitive Map and Statement Modification Order (No.17 – Widcombe) 2019
Limitations: None

| From | | Description of Route | | To | |
|-----------------------------|----------------|----------------------|-----------------------------|----------------|----------------|
| County Road or Right of Way | Grid Reference | General Direction | County Road or Right of Way | Grid Reference | Grid Reference |
| Lyncombe Vale Road | ST 7510 6344 | SE | Public Footpath BC53/6 | ST 7523 6339 | |

General Description:

A public footpath commencing from a junction with Lyncombe Vale Road at Grid Reference ST 7510 6344 and proceeding in a generally easterly direction for approximately 78 metres to a junction with Public Footpath BC53/6 at Grid Reference ST 7518 6343. The footpath continues for approximately 57 metres to Grid Reference ST 7523 6343. The footpath turns in a generally east-south-easterly direction for approximately 51 metres to Grid Reference ST 7528 6341. The footpath turns in a generally southerly direction for approximately 12 metres to Grid Reference ST 7528 6340. The footpath turns in a generally westerly direction for approximately 40 metres to Grid Reference ST 7524 6339. The footpath turns in a generally south-westerly direction for approximately 15 metres to a junction with Public Footpath BC53/6 at Grid Reference ST 7523 6339.

PART II

Modification of Definitive Statement
Variation of particulars of path or way

A new statement for BC53/6 shall be recorded as follows:

Status: Footpath
Length: Approximately 465 metres
Ward / Parish: Widcombe
Width: Varies between 1.0 metres – 4.0 metres between Grid Reference ST 7518 6345 and Grid Reference ST 7522 6337 and 2.4 metres – 4.0 metres between Grid Reference ST 7524 6319 and Grid Reference ST 7535 6311 as shown shaded grey on the map numbered Part 3, included in the Bath and North East Somerset Council, City of Bath Definitive Map and Statement Modification Order (No.17 – Widcombe) 2019, 1.8 metres between Grid Reference ST 7522 6337 and Grid Reference ST 7524 6319
Limitations: The right of the landowner to erect and maintain a pedestrian gate adjacent to a 1.4 metre wide gap at Grid Reference ST 7518 6345. The right of the landowner to erect and maintain a pedestrian gate at Grid Reference ST 7522 6337 and at Grid Reference ST 7524 6319.

| From | | Description of Route | | To | |
|-----------------------------|----------------|----------------------|-----------------------------|----------------|----------------|
| County Road or Right of Way | Grid Reference | General Direction | County Road or Right of Way | Grid Reference | Grid Reference |
| Lyncombe Vale Road | ST 7518 6345 | SE | Fox Hill | | ST 7535 6311 |

General Description:

A public footpath commencing from a junction on Lyncombe Vale Road at Grid Reference ST 7518 6345 and proceeding in a generally south-south-westerly direction up steps for approximately 19 metres to a junction with Public Footpath BC53/5 at Grid Reference ST 7517 6343. The footpath continues for approximately 29 metres to where the steps end at Grid Reference ST 7516 6341. The footpath turns in a generally east-south-easterly direction for approximately 76 metres to a junction with public footpath BC53/5 at Grid Reference ST 7523 6339. The footpath turns in a generally south-south-westerly direction for approximately 19 metres to a pedestrian gate at Grid Reference ST 7522 6337. The footpath continues for approximately 11 metres to Grid Reference ST 7522 6336. The footpath turns in a generally southerly direction for approximately 173 metres to steps and a pedestrian gate at Grid Reference ST 7524 6319. The footpath continues for approximately 3 metres to Grid Reference ST 7524 6318. The footpath turns in a generally south-easterly direction for approximately 135 metres to a junction with Fox Hill at Grid Reference ST 7535 6311.

PART II

Modification of Definitive Statement
Variation of particulars of path or way

A new statement for BC53/7 shall be recorded as follows:

Status: Bridleway
Length: Approximately 516 metres
Ward / Parish: Widcombe and Combe Down
Width: Varies between 2.2 metres – 7.4 metres as shown shaded grey on the map numbered Part 4 included in the Bath and North East Somerset Council, City of Bath Definitive Map and Statement Modification Order (No.17 – Widcombe) 2019. 3 metres between Grid References ST 7581 6308 and Grid Reference ST 7585 6285.
Limitations: None

| From | | Description of Route | | To | |
|-----------------------------|----------------|----------------------|-----------------------------|----------------|----------------|
| County Road or Right of Way | Grid Reference | General Direction | County Road or Right of Way | Grid Reference | Grid Reference |
| Blind Lane | ST 7585 6334 | S | Bridleway BC52/2 | ST 7585 6285 | ST 7585 6285 |

General Description:

A bridleway commencing from a junction on Blind Lane at Grid Reference ST 7585 6334 and proceeding in a generally southerly direction for approximately 276 metres to a junction with Public Footpath BQ52 at Grid Reference ST 7581 6308. The bridleway continues for approximately 233 metres to a junction with Public Footpath BC52/8 at Grid Reference ST 7584 6285. The bridleway continues for approximately 7 metres to a junction with Public Bridleway BC52/2 at Grid Reference ST 7585 6285.

PART II

Modification of Definitive Statement
Variation of particulars of path or way

A new statement for BC54/41 shall be recorded as follows:

Status: Footpath
Length: Approximately 24 metres
Ward / Parish: Widcombe
Width: Varies between 2.5 metres – 2.6 metres as shown shaded grey on the map numbered Part 5 included in the Bath and North East Somerset Council, City of Bath Definitive Map and Statement Modification Order (No.17 – Widcombe) 2019
Limitations: None

| From | | Description of Route | | To | |
|-----------------------------|----------------|----------------------|-----------------------------|----------------|--|
| County Road or Right of Way | Grid Reference | General Direction | County Road or Right of Way | Grid Reference | |
| Broadway | ST 7558 6455 | NNE | Ferry Lane | ST 7558 6458 | |

General Description:

A public footpath commencing from a junction with Broadway at Grid Reference ST 7558 6455 and proceeding in a generally north-north-easterly direction for approximately 24 metres to Ferry Lane at Grid Reference ST 7558 6458.

PART II

Modification of Definitive Statement
Variation of particulars of path or way

A new statement for BC54/42 shall be recorded as follows:

Status: Footpath
Length: Approximately 44 metres
Ward / Parish: Widcombe
Width: Varies between 4.7 metres – 6.2 metres as shown shaded grey on the map numbered Part 6 included in the Bath and North East Somerset Council, City of Bath Definitive Map and Statement Modification Order (No.17 – Widcombe) 2019
Limitations: None

| Description of Route | | |
|-----------------------------|-------------------|-----------------------------|
| From | General Direction | To |
| County Road or Right of Way | Grid Reference | County Road or Right of Way |
| Pulteney Road | ST 7566 6441 | Public Footpath BCTOW/2 |
| | SE | ST 7569 6440 |

General Description:

A public footpath commencing from a junction with Pulteney Road at Grid Reference ST 7566 6441 and proceeding in a generally south-easterly direction for approximately 44 metres to Public Footpath BCTOW/2 at Grid Reference ST 7569 6440.

PART II

Modification of Definitive Statement
Variation of particulars of path or way

A new statement for BC54/44 shall be recorded as follows:

Status: Footpath
Length: Approximately 70 metres
Ward / Parish: Widcombe
Width: Varies between 1.7 metres – 4.1 metres as shown shaded grey on the map numbered Part 7 included in the Bath and North East Somerset Council, City of Bath Definitive Map and Statement Modification Order (No.17 – Widcombe) 2019
Limitations: None

| From | | Description of Route | |
|------------------------------------|-----------------------|-----------------------------|---|
| County Road or Right of Way | Grid Reference | General Direction | To |
| The Tynning | ST 7582 6429 | E | County Road or Right of Way Horseshoe Walk |
| | | | ST 7589 6430 |

General Description:

A public footpath commencing from a junction with The Tynning at Grid Reference ST 7582 6429 and proceeding in a generally easterly direction for approximately 70 metres to Horseshoe Walk at Grid Reference ST 7589 6430.

PART II

Modification of Definitive Statement

Variation of particulars of path or way

A new statement for BC54/45 shall be recorded as follows:

Status: Footpath
Length: Approximately 66 metres
Ward / Parish: Widcombe
Width: Varies between 1.7 metres – 5.6 metres as shown shaded grey on the map numbered Part 8 included in the Bath and North East Somerset Council, City of Bath Definitive Map and Statement Modification Order (No.17 – Widcombe) 2019
Limitations: None

| From | | Description of Route | | To | |
|-----------------------------|----------------|----------------------|-----------------------------|----------------|----------------|
| County Road or Right of Way | Grid Reference | General Direction | County Road or Right of Way | Grid Reference | Grid Reference |
| Claverton Street | ST 7537 6422 | SE | Armes Court | ST 7541 6418 | |

General Description:

A public footpath commencing at a junction with Claverton Street at Grid Reference ST 7537 6422 and proceeding in a generally south-south-westerly direction up steps for approximately 10 metres to Grid Reference ST 7537 6421. The footpath continues for approximately 3 metres to Grid Reference ST 7537 6421. The footpath turns in a generally south-easterly direction for approximately 53 metres to Armes Court at Grid Reference ST 7541 6418.

PART II

Modification of Definitive Statement
Variation of particulars of path or way

A new statement for BC54/47 shall be recorded as follows:

Status: Footpath
Length: Approximately 67 metres
Ward / Parish: Widcombe
Width: Varies between 0.9 metres – 3.1 metres as shown shaded grey on the map numbered Part 9 included in the Bath and North East Somerset Council, City of Bath Definitive Map and Statement Modification Order (No.17 – Widcombe) 2019
Limitations: None

| From | | Description of Route | | To | |
|------------------------------------|-----------------------|-----------------------------|------------------------------------|-----------------------|--|
| County Road or Right of Way | Grid Reference | General Direction | County Road or Right of Way | Grid Reference | |
| Calton Gardens | ST 7512 6413 | N | St Mark's Road | ST 7511 6419 | |

General Description:

A public footpath commencing from a junction with Calton Gardens at Grid Reference ST 7512 6413 and proceeding in a generally northerly direction for approximately 5 metres to steps at Grid Reference ST 7512 6414. The footpath continues for approximately 27 metres to Grid Reference ST 7512 6416. The footpath turns in a generally west-north-westerly direction for approximately 8 metres to Grid Reference ST 7511 6417. The footpath turns in a generally northerly direction for approximately 3 metres to where the steps end at Grid Reference ST 7511 6417. The footpath continues for approximately 21 metres to steps at Grid Reference ST 7511 6419. The footpath continues for approximately 3 metres to St Mark's Road at Grid Reference ST 7511 6419.

PART II

Modification of Definitive Statement
Variation of particulars of path or way

A new statement for BC54/48 shall be recorded as follows:

Status: Footpath
Length: Approximately 74 metres.
Ward / Parish: Widcombe
Width: Varies between 2.4 metres – 3.7 metres as shown shaded grey on the map numbered Part 10 included in the Bath and North East Somerset Council, City of Bath Definitive Map and Statement Modification Order (No.17 – Widcombe) 2019
Limitations: None

| Description of Route | |
|------------------------------------|------------------------------------|
| From | To |
| County Road or Right of Way | County Road or Right of Way |
| Millbrook Place | Prior Park Cottages |
| Grid Reference ST 7547 6418 | Grid Reference ST 7552 6413 |
| | General Direction SE |

General Description:

A public footpath commencing from a junction with Millbrook Place at Grid Reference ST 7547 6418 and proceeding in a generally east-south-easterly direction for approximately 10 metres to Grid Reference ST. 7548 6418. The footpath turns in a generally south-easterly direction and continues for approximately 64 metres to Prior Park Cottages at Grid Reference ST 7552 6413.

PART II
Modification of Definitive Statement
Variation of particulars of path or way

A new statement for BC54/49 shall be recorded as follows:

Status: Footpath
Length: Approximately 65 metres
Ward / Parish: Widcombe
Width: Varies between 1.5 metres – 1.9 metres as shown shaded grey on the map numbered Part 11 included in the Bath and North East Somerset Council, City of Bath Definitive Map and Statement Modification Order (No.17 – Widcombe) 2019
Limitations: None

| | | Description of Route | |
|-----------------------------|------|----------------------|-----------------------------|
| | | General Direction | To |
| County Road or Right of Way | From | Grid Reference | County Road or Right of Way |
| Calton Road | | ST 7530 6416 | Alexandra Road |
| | | SSE | ST 7531 6410 |

General Description:

A public footpath commencing from a junction with Calton Road at Grid Reference ST 7530 6416 and proceeding down steps in a generally south-south-easterly direction for approximately 1 metre to where the steps end at Grid Reference ST 7530 6416. The footpath continues for approximately 63 metres to steps at Grid Reference ST 7531 6410. The footpath continues down the steps for approximately 1 metre to Alexandra Road at Grid Reference ST 7531 6410.

PART II

Modification of Definitive Statement
Variation of particulars of path or way

A new statement for BC54/50 shall be recorded as follows:

Status: Footpath
Length: Approximately 61 metres
Ward / Parish: Widcombe
Width: Varies between 4.5 metres – 6.1 metres, narrowing to 1.8 metres at Grid Reference ST 7566 6406 as shown shaded grey on the map numbered Part 12 included in the Bath and North East Somerset Council, City of Bath Definitive Map and Statement Modification Order (No.17 – Widcombe) 2019
Limitations: None

| | | Description of Route | |
|-----------------------------|------|----------------------|-----------------------------|
| | | General Direction | To |
| County Road or Right of Way | From | Grid Reference | County Road or Right of Way |
| Prior Park Road | | ST 7561 6403 | Clarendon Road |
| | | | ST 7566 6406 |

General Description:

A public footpath commencing from a junction with Prior Park Road at Grid Reference ST 7561 6403 and proceeding in a generally north-easterly direction for approximately 59 metres to steps at Grid Reference ST 7566 6406. The footpath continues up the steps for approximately 2 metres to Clarendon Road at Grid Reference ST 7566 6406.

PART II

Modification of Definitive Statement

Variation of particulars of path or way

A new statement for BC63/1 shall be recorded as follows:

- Status:** Footpath
Length: Approximately 985 metres
Ward / Parish: Widcombe
Width: Varies between 1.4 metres – 3.5 metres as shown shaded grey on the map numbered Part 13 included in the Bath and North East Somerset Council, City of Bath Definitive Map and Statement Modification Order (No.17 – Widcombe) 2019. 1.8 metres between Grid Reference ST 7617 6336 and Grid Reference ST 7644 6311. 2.5 metres between Grid Reference ST 7644 6311 and Grid Reference ST 7617 6336. The right of the landowner to erect and maintain a squeeze stile at Grid Reference ST 7617 6336. The right of the landowner to erect and maintain a kissing gate at Grid Reference ST 7643 6319.
- Limitations:**

| From | | Description of Route | | To | |
|-----------------------------|----------------|----------------------|-----------------------------|----------------|----------------|
| County Road or Right of Way | Grid Reference | General Direction | County Road or Right of Way | Grid Reference | Grid Reference |
| Church Lane | ST 7612 6354 | SE | Restricted Byway BC62/1 | | ST 7663 6295 |

General Description:

A public footpath commencing at a junction with Church Lane at Grid Reference ST 7612 6354 and proceeding in a generally south-south-easterly direction for approximately 151 metres to Grid Reference ST 7619 6341. The footpath turns in a generally southerly direction for approximately 50 metres to steps at Grid Reference ST 7617 6337. The footpath continues up the steps for approximately 5 metres to where the steps end at a squeeze stile at Grid Reference ST 7617 6336. The footpath continues for approximately 3 metres and turns in a generally easterly direction at Grid Reference ST 7617 6336. The footpath continues for approximately 37 metres and turns in a generally south-south-easterly direction at Grid Reference ST 7621 6336. The footpath continues for approximately 284 metres to a kissing gate at Grid Reference ST 7643 6319. The footpath continues for approximately 1 metre to a junction with public footpath BC63/5 at Grid Reference ST 7643 6319. The footpath continues for approximately 2 metres and turns in a generally southerly direction at Grid Reference ST 7643 6318. The footpath continues through Grid Reference ST 7644 6311 for approximately 252 metres to Grid Reference ST 7645 6295. The footpath turns in a generally easterly direction and continues for approximately 167 metres to Grid Reference ST 7661 6293. The footpath continues

in a generally northerly direction for approximately 22 metres to Grid Reference ST 7662 6295. The footpath continues in a generally easterly direction for approximately 11 metres to a junction with Restricted Bridleway BC62/1 at Grid Reference ST 7663 6295.

PART II

Modification of Definitive Statement
Variation of particulars of path or way

A new statement for BC63/3 shall be recorded as follows:

Status: Footpath
Length: Approximately 335 metres
Ward / Parish: Widcombe
Width: Varies between 1.5 metres – 3.4 metres as shown shaded grey on the map numbered Part 14, included in the Bath and North East Somerset Council, City of Bath Definitive Map and Statement Modification Order (No.17 – Widcombe) 2019
Limitations: The right of the landowner to erect and maintain a kissing gate at Grid Reference ST 7678 6378

| From | | Description of Route | | To | |
|-----------------------------|----------------|----------------------|-----------------------------|----------------|----------------|
| County Road or Right of Way | Grid Reference | General Direction | County Road or Right of Way | Grid Reference | Grid Reference |
| Widcombe Hill | ST 7647 6389 | ESE | Restricted Byway BC62/1 | ST 7678 6378 | ST 7678 6378 |

General Description:

A public footpath commencing from a junction with Widcombe Hill at Grid Reference ST 7647 6389 and proceeding in a generally east-south-easterly direction for approximately 335 metres to a kissing gate at a junction with Restricted Byway BC62/1 at Grid Reference ST 7678 6378.

PART II

Modification of Definitive Statement

Variation of particulars of path or way

A new statement for BC63/4 shall be recorded as follows:

Status: Footpath
Length: Approximately 122 metres
Ward / Parish: Widcombe
Width: 1.8 metres, as shown on the map numbered Part 15 included in the Bath and North East Somerset Council, City of Bath Definitive Map and Statement Modification Order (No.17 – Widcombe) 2019
Limitations: None

| From | | Description of Route | | To | |
|-----------------------------|----------------|----------------------|-----------------------------|----------------|----------------|
| County Road or Right of Way | Grid Reference | General Direction | County Road or Right of Way | Grid Reference | Grid Reference |
| Public Footpath BC63/5 | ST 7665 6339 | ENE | Restricted Byway BC62/1 | ST 7675 6344 | |

General Description:

A public footpath commencing from a junction with Public Footpath BC63/5 at Grid Reference ST 7665 6339 and proceeding in a generally east-north-easterly direction for approximately 4 metres to steps at Grid Reference ST 7665 6339. The footpath continues up the steps for approximately 46 metres to where the steps end at Grid Reference ST 7669 6341. The footpath continues for approximately 72 metres to a junction with Restricted Byway BC62/1 at Grid Reference ST 7675 6344.

PART II

Modification of Definitive Statement
Variation of particulars of path or way

A new statement for BC63/5 shall be recorded as follows:

Status: Footpath
Length: Approximately 303 metres
Ward / Parish: Widcombe
Width: 3.0 metres, as shown on the map numbered Part 16 included in the Bath and North East Somerset Council, City of Bath Definitive Map and Statement Modification Order (No.17 – Widcombe) 2019
Limitations: None

| Description of Route | | |
|-----------------------------|-------------------|-----------------------------|
| From | General Direction | To |
| County Road or Right of Way | Grid Reference | County Road or Right of Way |
| Public Footpath BC63/1 | ST 7643 6319 | Public Footpath BC63/4 |
| | NE | ST 7665 6339 |

General Description:

A public footpath commencing from a junction with Public Footpath BC63/1 at Grid Reference ST 7643 6319 and proceeding in a generally north-easterly direction for approximately 303 metres to a junction with Public Footpath BC63/4 at Grid Reference ST 7665 6339.

PART II

Modification of Definitive Statement
Variation of particulars of path or way

A new statement for BC64/7 shall be recorded as follows:

Status: Footpath
Length: Approximately 555 metres
Ward / Parish: Widcombe
Width: 1.8 metres, as shown on the map numbered Part 17 included in the Bath and North East Somerset Council, City of Bath Definitive Map and Statement Modification Order (No.17 – Widcombe) 2019
Limitations: None

| Description of Route | | |
|-----------------------------|-------------------|-----------------------------|
| From | General Direction | To |
| County Road or Right of Way | | County Road or Right of Way |
| Public Footpath BC54/40 | SSE | Widcombe Hill |
| | | ST 7632 6392 |

General Description:

A public footpath commencing from a junction with Public Footpath BC54/40 at Grid Reference ST 7620 6417 and proceeding in a generally west-south-westerly direction for approximately 180 metres to Grid Reference ST 7604 6414. The footpath turns in a generally south-easterly direction and continues for approximately 364 metres to Grid Reference ST 7631 6393. The footpath turns in a generally southerly direction and continues for approximately 11 metres to Widcombe Hill at Grid Reference ST 7632 6392.

PART II
Modification of Definitive Statement
Variation of particulars of path or way

The statement for BC52/8 shall be amended to read as follows:

- Status:** Footpath
- Length:** Approximately 665 metres
- Ward:** Combe Down
- Width:** 4 metres between grid references ST 7558 6241 and ST 7556 6245
 3.5 metres between grid references ST 7556 6245 and ST 7556 6254
 1.8 metres between grid references ST 7556 6254 and ST 7556 6256
 1 metre between grid references ST 7556 6256 and ST 7584 6285
- Limitations:** None

| Description of Route | | | |
|-----------------------------|----------------|--------------------------|---|
| From | | General Direction | To |
| County Road or Right of Way | Grid Reference | | County Road or Right of Way Grid Reference |
| Bradford Road | ST 7558 6241 | NE | Pope's Walk ST 7584 6285 |

General Description:

A public footpath commencing from a junction with Bradford Road at grid reference ST 7558 6241 and continuing in a generally northerly direction over Bramble Way for approximately 140 metres to grid reference ST 7556 6254 and continuing in a generally northerly direction adjacent to Combe Down Rugby Club for approximately 165 metres to grid reference ST 7556 6271 and continuing in a generally northerly direction to the rear of 35-38 Stonehouse Lane for approximately 65 metres to grid reference ST 7557 6278 and turning in a generally east-north-easterly direction for approximately 295 metres to a junction with Pope's Walk (public footpath BC53/7) at grid reference ST 7584 6285.

PART II

Modification of Definitive Statement

Variation of particulars of path or way

The statement for BC54/40 shall be amended to read as follows:

- Status:** Footpath
Length: Approximately 861 metres
Ward / Parish: Bathwick
Width: Varies between 0.7 metres – 4.4 metres, as shown shaded grey on the map numbered Part 2 included in the Bath and North East Somerset Council, City of Bath Definitive Map and Statement Modification Order (No.11 – Bathwick & Combe Down) 2015.
Limitations: The right of the landowner to erect and maintain Kissing Gates at Grid Reference ST 7632 6447 and Grid Reference ST 7620 6426

| From | | Description of Route | | To | |
|-----------------------------|----------------|----------------------|-----------------------------|----------------|--|
| County Road or Right of Way | Grid Reference | General Direction | County Road or Right of Way | Grid Reference | |
| Sydney Buildings | ST 7586 6465 | SW | Public Footpath BC64/7 | ST 7621 6417 | |

General Description:

The footpath starts on Sydney Buildings and continues up steps for a distance of approximately 44 metres in a generally east-north-easterly direction to a junction with public footpath BC54/39. The footpath continues for a distance of approximately 8 metres to where the direction changes to generally easterly. The footpath continues for a distance of approximately 8 metres to where the steps end. The footpath continues for a distance of approximately 107 metres to where the direction changes to generally south-easterly at its junction with public footpath BC64/2. The footpath continues for a distance of approximately 357 metres to where the direction changes to generally south-westerly at the junction with public footpath BC64/6. The footpath continues for a distance of approximately 4 metres to a kissing gate. The footpath continues for a distance of approximately 189 metres to where the direction changes to generally southerly. The footpath continues for a distance of approximately 51 metres to where steps start. The footpath continues for a distance of approximately 93 metres to where it finishes on public footpath BC64/7.

PART II

Modification of Definitive Statement
Variation of particulars of path or way

The statement for BC62/1 shall be amended to read as follows:

Status: Restricted Byway
Length: Approximately 1421 metres
Ward / Parish: Bathwick and Widcombe
Width: Varying between 4.4 metres and 4.7 metres between grid references ST 7657 6272 and ST 7662 6292 as shown shaded grey on the order map forming part of the Bath and North East Somerset Council (BC62/1, Claverton Down, Bath) Restricted Byway Creation Order 2012.
9.5 metres between grid references ST 7662 6292 and ST 7670 6325.
3.5 metres between grid references ST 7670 6325 and ST 7673 6335.
4.5 metres between grid references ST 7673 6335 and ST 7680 6361.
5 metres between grid references ST 7680 6361 and ST 7682 6381.
Varying between 3.8 metres and 7 metres between grid references ST 7682 6381 and ST 7692 6403 as shown shaded grey on the order map forming part of the Bath and North East Somerset Council (BC62/1, Claverton Down, Bath) Restricted Byway Creation Order 2012.

Limitations: None

| Description of Route | | | |
|-----------------------------|----------------|-----------------------------|----------------|
| From | | To | |
| County Road or Right of Way | Grid Reference | County Road or Right of Way | Grid Reference |
| Claverton Down Road | ST 7657 6272 | Widcombe Hill | ST 7692 6403 |

General Description:

A restricted byway commencing from a junction with Claverton Down Road, opposite the junction with Shaft Road at grid reference ST 7657 6272 and proceeding in a generally north-north-easterly direction for approximately 200 metres to grid reference ST 7662 6292. The restricted byway continues following the edge of Monument Field for approximately 33 metres to a junction with public footpath BC63/1 at grid reference ST 7663 6295. The restricted byway continues for approximately 308 metres to grid reference ST 7670 6325. The restricted byway continues in a generally north-north-easterly direction through woodland for approximately 100 metres to grid reference ST 7673 6335 and follows the eastern edge of a field for approximately 98 metres to a

junction with public footpath BC63/4 at grid reference ST 7675 6344. The restricted byway continues for approximately 172 metres to a gap in the wall at grid reference ST 7680 6361. The restricted byway turns in a generally northerly direction for approximately 165 metres to a junction with public footpath BC63/2 at grid reference ST 7678 6377. The restricted byway continues for approximately 10 metres to a junction with public footpath BC63/3 at grid reference ST 7678 6378, passing through grid reference ST 7679 6377 to grid reference ST 7679 6378. The restricted byway continues in a generally north-easterly and northerly direction for approximately 335 metres to a junction with Widcombe Hill, opposite the entrance to Copseland at grid reference ST 7692 6403.

Wildlife & Countryside Act 1981

Part 1

Bath & North East Somerset Council

Public Footpath BC53/4 at Widcombe Ward, Bath. City of Bath Definitive Map and Statement Modification Order (No.17 - Widcombe) 2019.

Key Footpath to be added to the Definitive Map and Statement.

Order Map

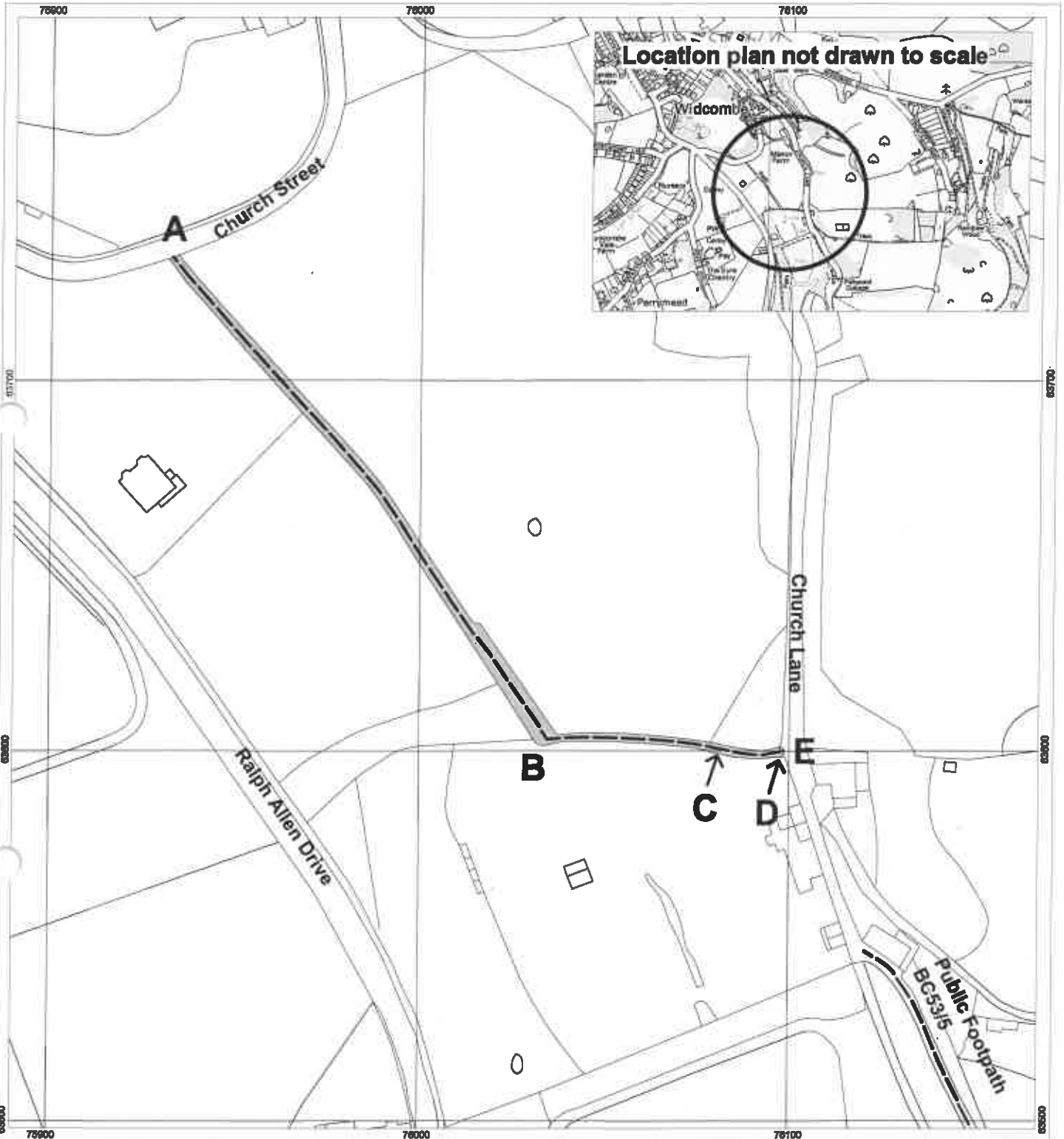


The width of the footpath to be recorded is shown shaded and varies between 2.5 metres - 5.0 metres



Scale 1:1500

----- Other footpaths included in this Order



Wildlife & Countryside Act 1981

Part 2

Bath & North East Somerset Council

Public Footpath BC53/5 at Widcombe Ward, Bath. City of Bath Definitive Map and Statement Modification Order (No.17 - Widcombe) 2019

Key Footpath to be added to the Definitive Map and Statement.

Order Map



Scale 1:1500

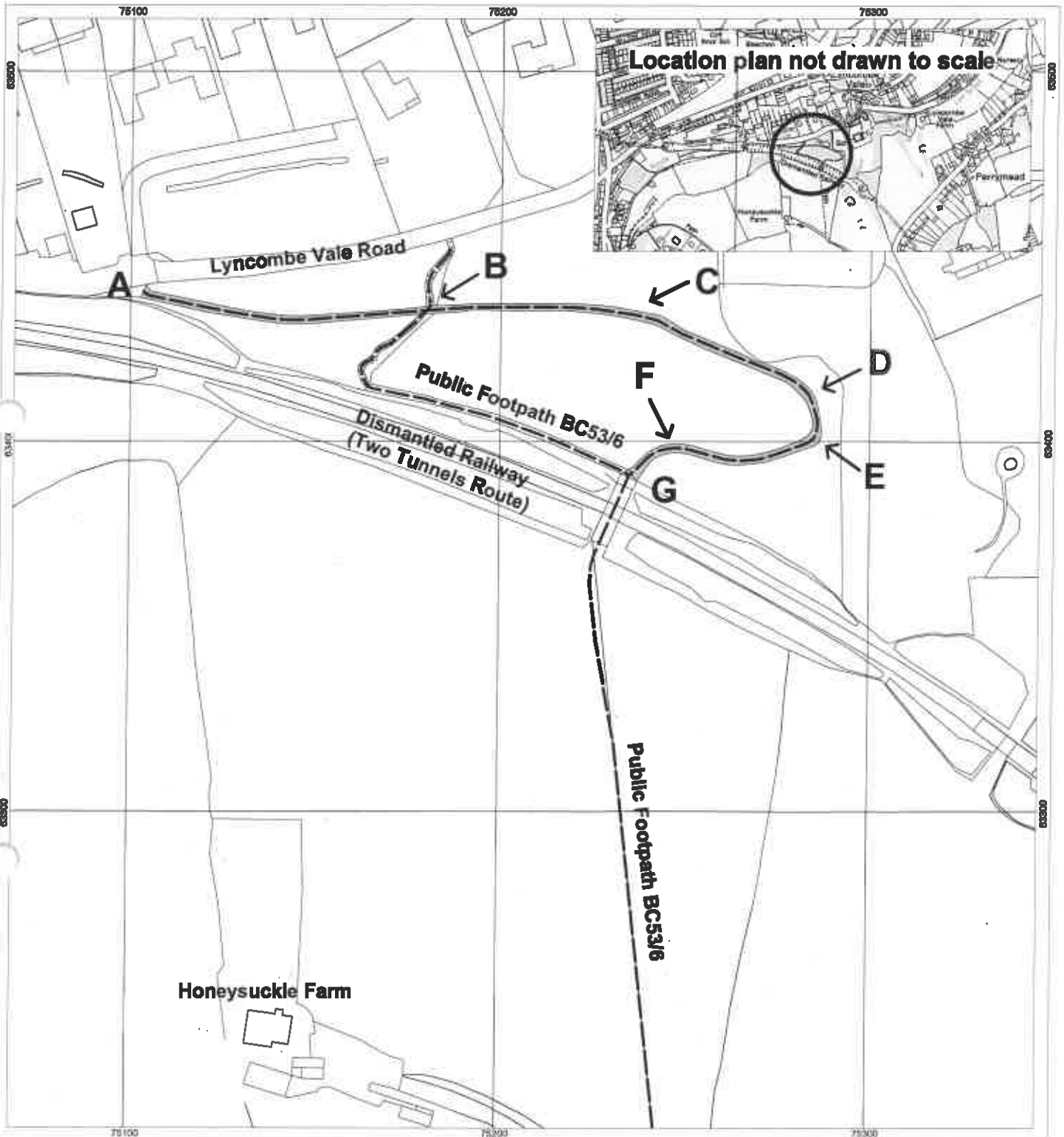
A B C D E F G

ST 7510 6344

ST 7523 6339

The width of the footpath to be recorded is shown shaded and varies between 1.6 metres - 3.8 metres

Other footpaths included in this Order



Wildlife & Countryside Act 1981

Part 3

Bath & North East Somerset Council
Public Footpath BC53/6 at Widcombe Ward, Bath. City of Bath Definitive Map and Statement
Modification Order (No.17 - Widcombe) 2019

Key Footpath to be added to the Definitive Map and Statement.



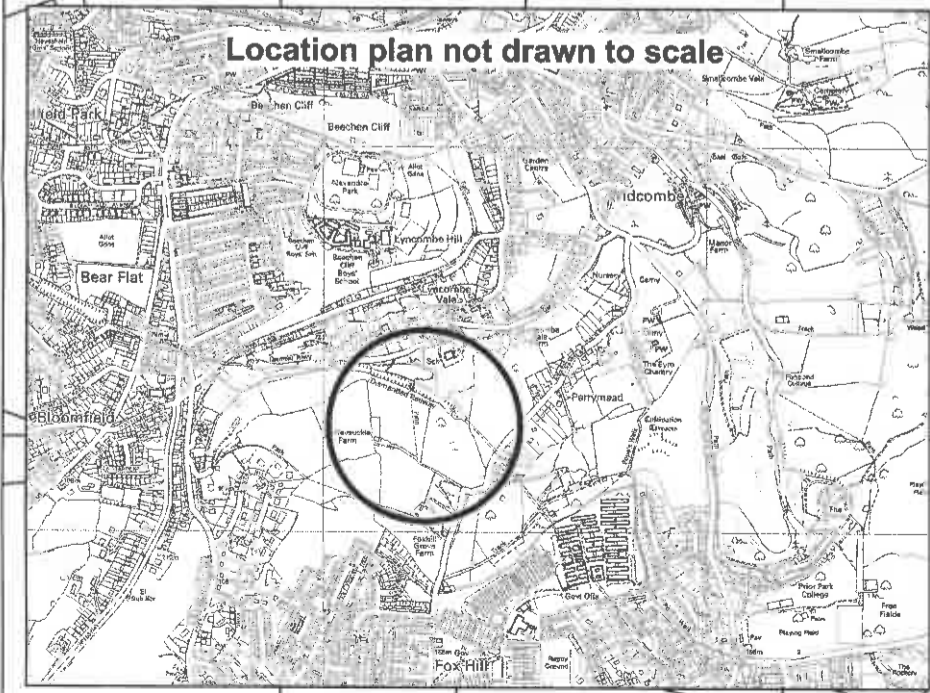
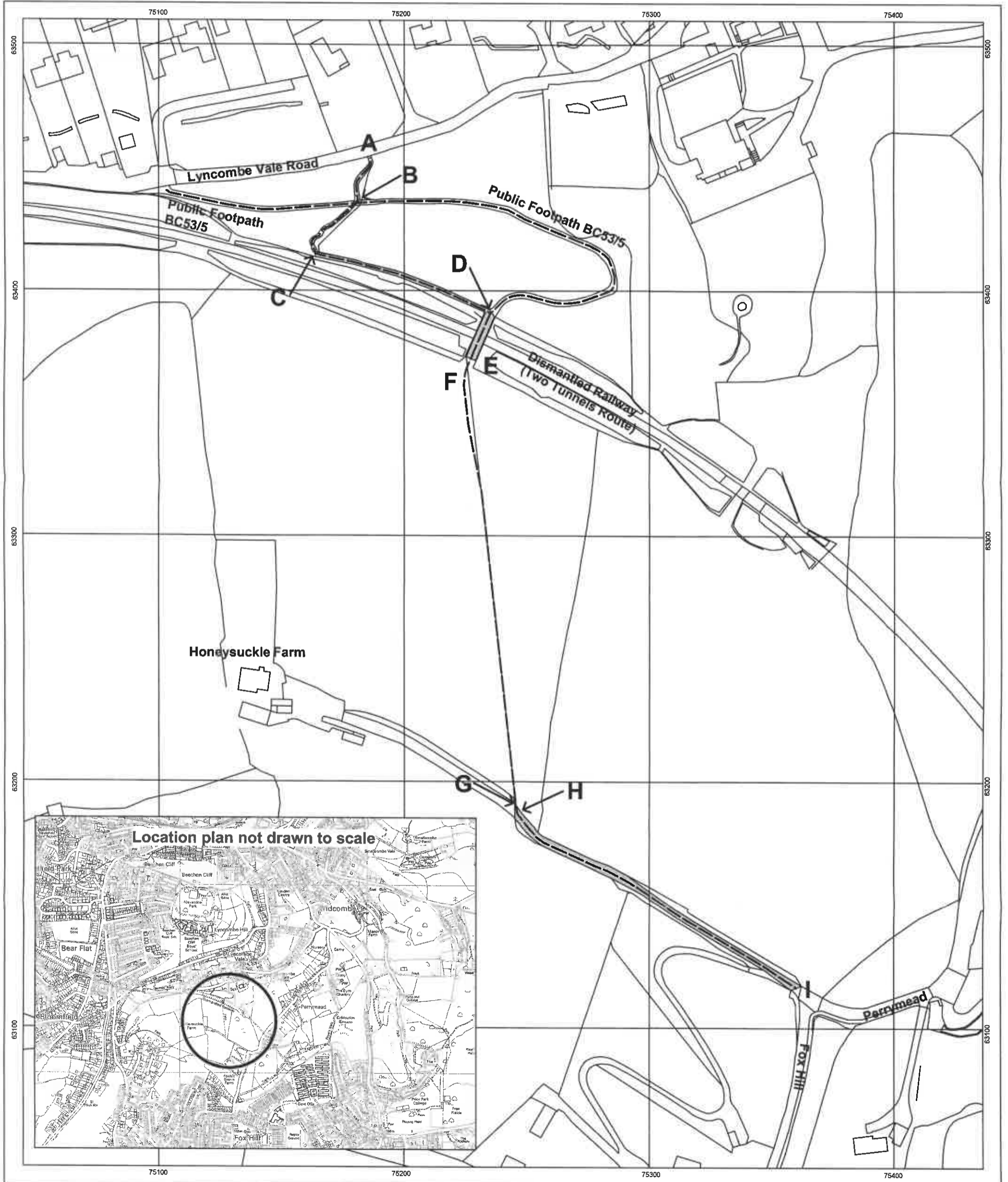
Varies between 1.0 metres – 4.0 metres between Points A and E,
narrowing to 0.9 metres at the Pedestrian Gate at Point D and
narrowing to 0.5 metres at the Pedestrian Gate at Point E
1.8 metres between Points E and G,
narrowing to 1.2 metres at the Pedestrian Gate at Point G
Varies between 2.4 metres – 4.0 metres between Points G and I

Order Map



Scale 1:1500

Other footpaths included in this Order

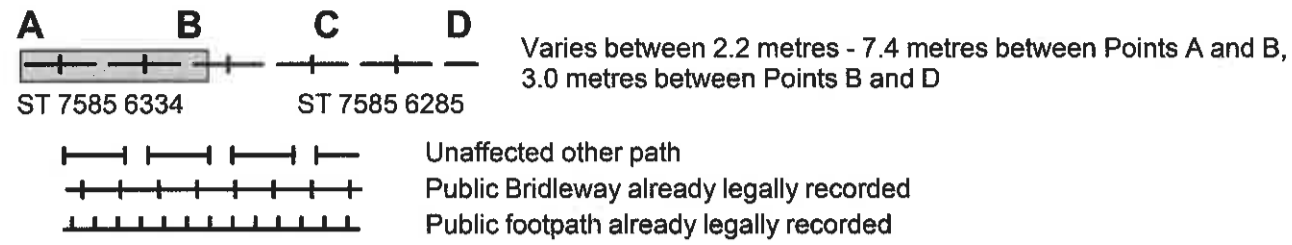


Wildlife & Countryside Act 1981

Part 4

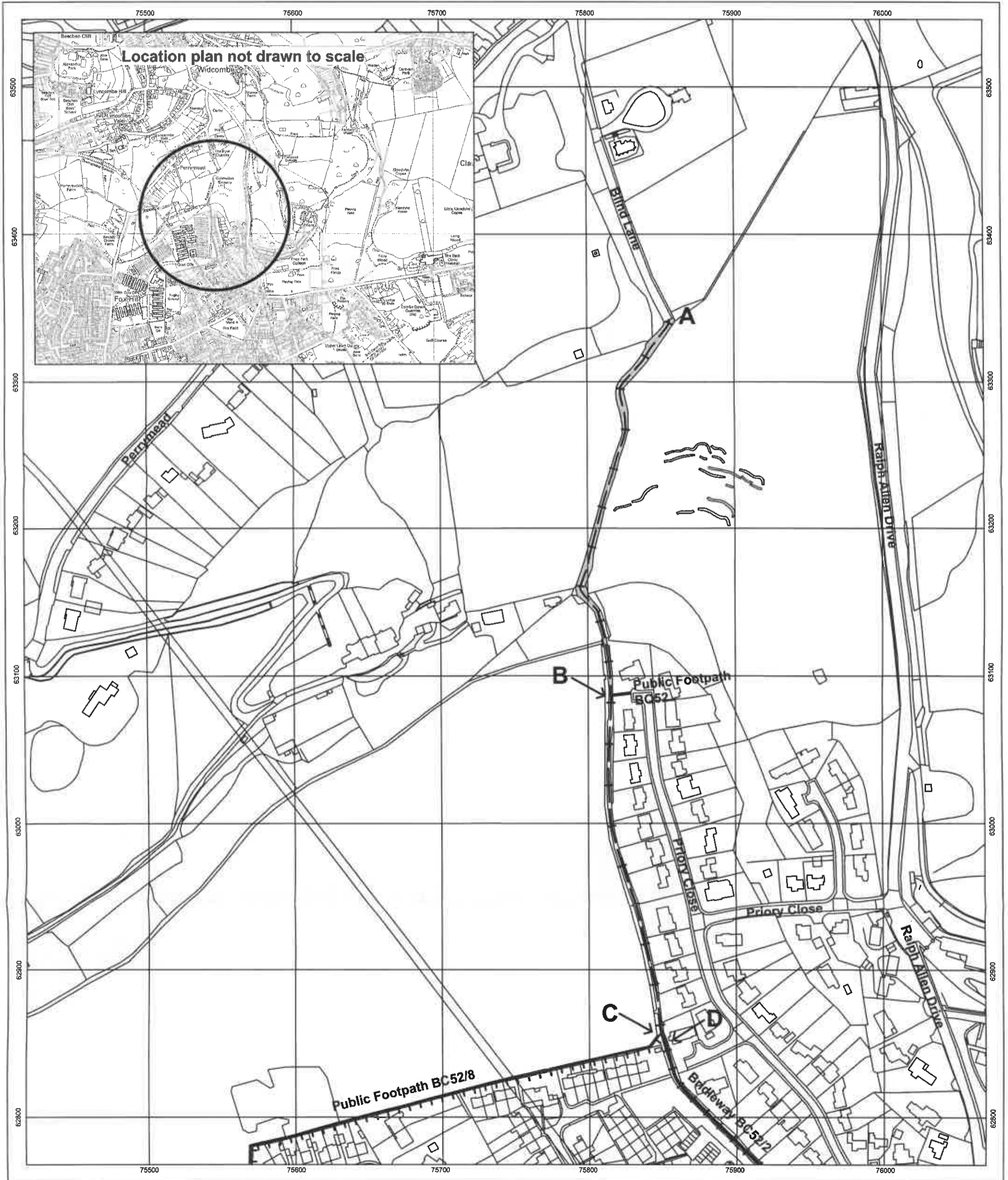
Bath & North East Somerset Council
 Public Bridleway BC53/7 at Widcombe Ward, Bath. City of Bath Definitive Map and Statement
 Modification Order (No.17 - Widcombe) 2019

Key Bridleway to be added to the Definitive Map and Statement.



Order Map

 Scale 1:2500



Wildlife & Countryside Act 1981

Part 5

Bath & North East Somerset Council

Public Footpath BC54/41 at Widcombe Ward, Bath. City of Bath Definitive Map and Statement Modification Order (No.17 - Widcombe) 2019

Key

Footpath to be added to the Definitive Map and Statement.

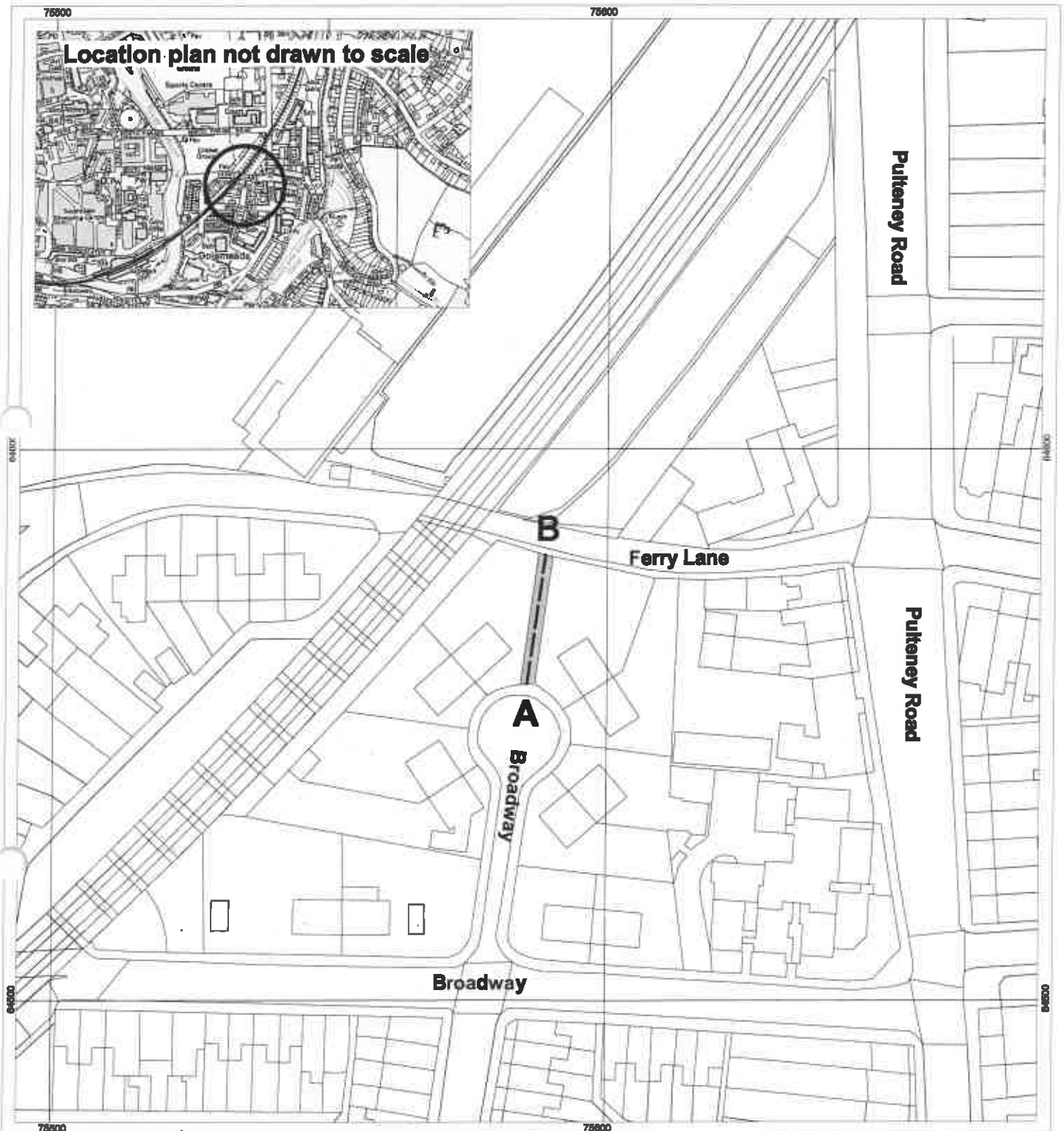
A  **B**
ST 7558 6455 ST 7558 6458

The width of the footpath to be recorded is shown shaded and varies between 2.5 metres - 2.6 metres

Order Map



Scale 1:1000



Wildlife & Countryside Act 1981

Part 6

Bath & North East Somerset Council

Public Footpath BC54/42 at Widcombe Ward, Bath. City of Bath Definitive Map and Statement Modification Order (No.17 - Widcombe) 2019

Key Footpath to be added to the Definitive Map and Statement.

Order Map

A  **B**
ST 7566 6441 ST 7569 6440

The width of the footpath to be recorded is shown shaded and varies between 4.7 metres - 6.2 metres

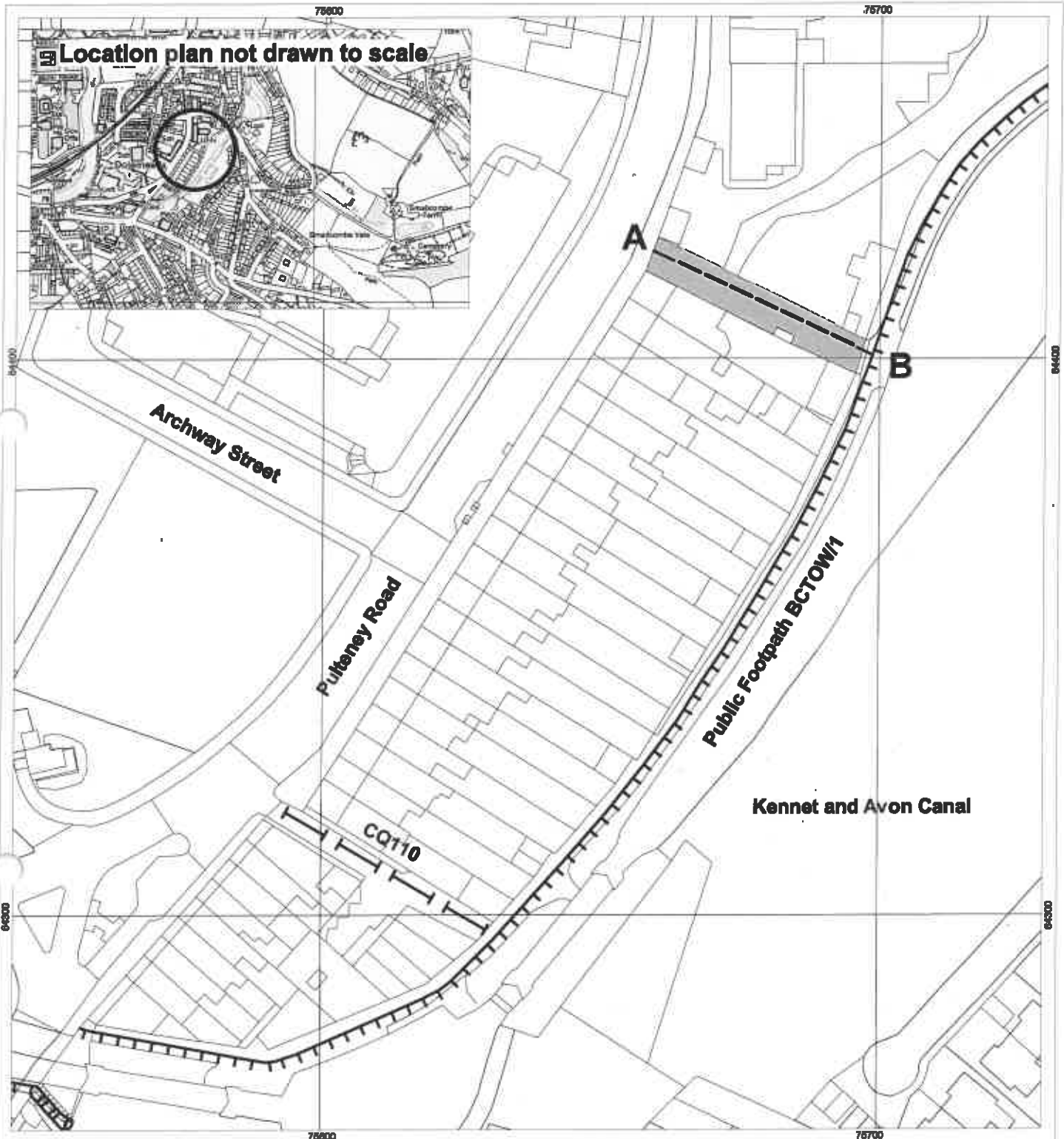

Scale 1:1000



Unaffected other path



Public footpath already legally recorded



Wildlife & Countryside Act 1981

Part 7

Bath & North East Somerset Council

Public Footpath BC54/44 at Widcombe Ward, Bath. City of Bath Definitive Map and Statement Modification Order (No.17 - Widcombe) 2019

Key

Footpath to be added to the Definitive Map and Statement.

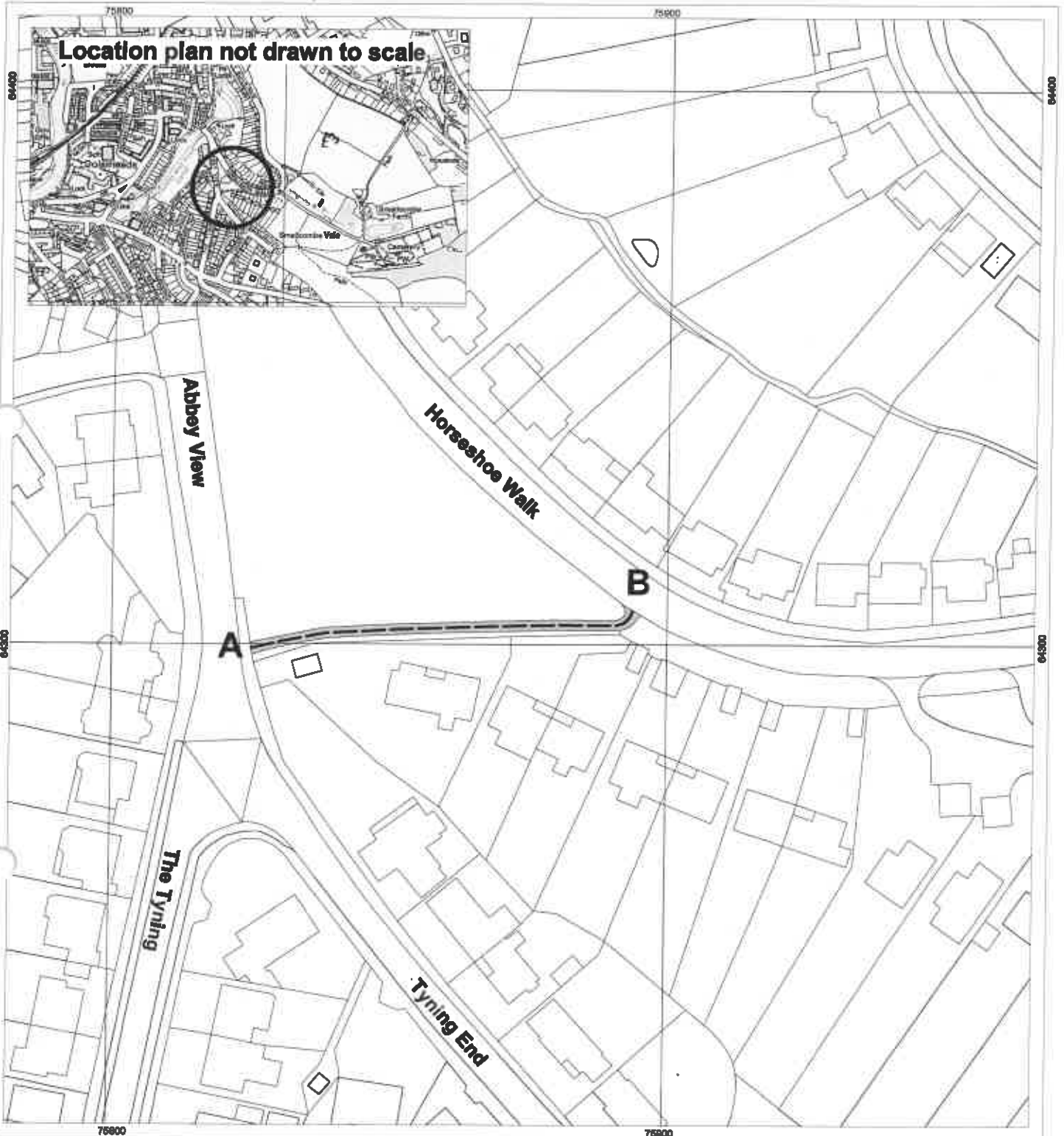
A  **B**
ST 7582 6429 ST 7589 6430

The width of the footpath to be recorded is shown shaded and varies between 1.7 metres - 4.1 metres

Order Map



Scale 1:1000



Wildlife & Countryside Act 1981

Part 8

Bath & North East Somerset Council

Public Footpath BC54/45 at Widcombe Ward, Bath. City of Bath Definitive Map and Statement Modification Order (No.17 - Widcombe) 2019

Key Footpath to be added to the Definitive Map and Statement.

A **B** **C** **D**

ST 7537 6422

ST 7541 6418

The width of the footpath to be recorded is shown shaded and varies between 1.7 metres - 5.6 metres

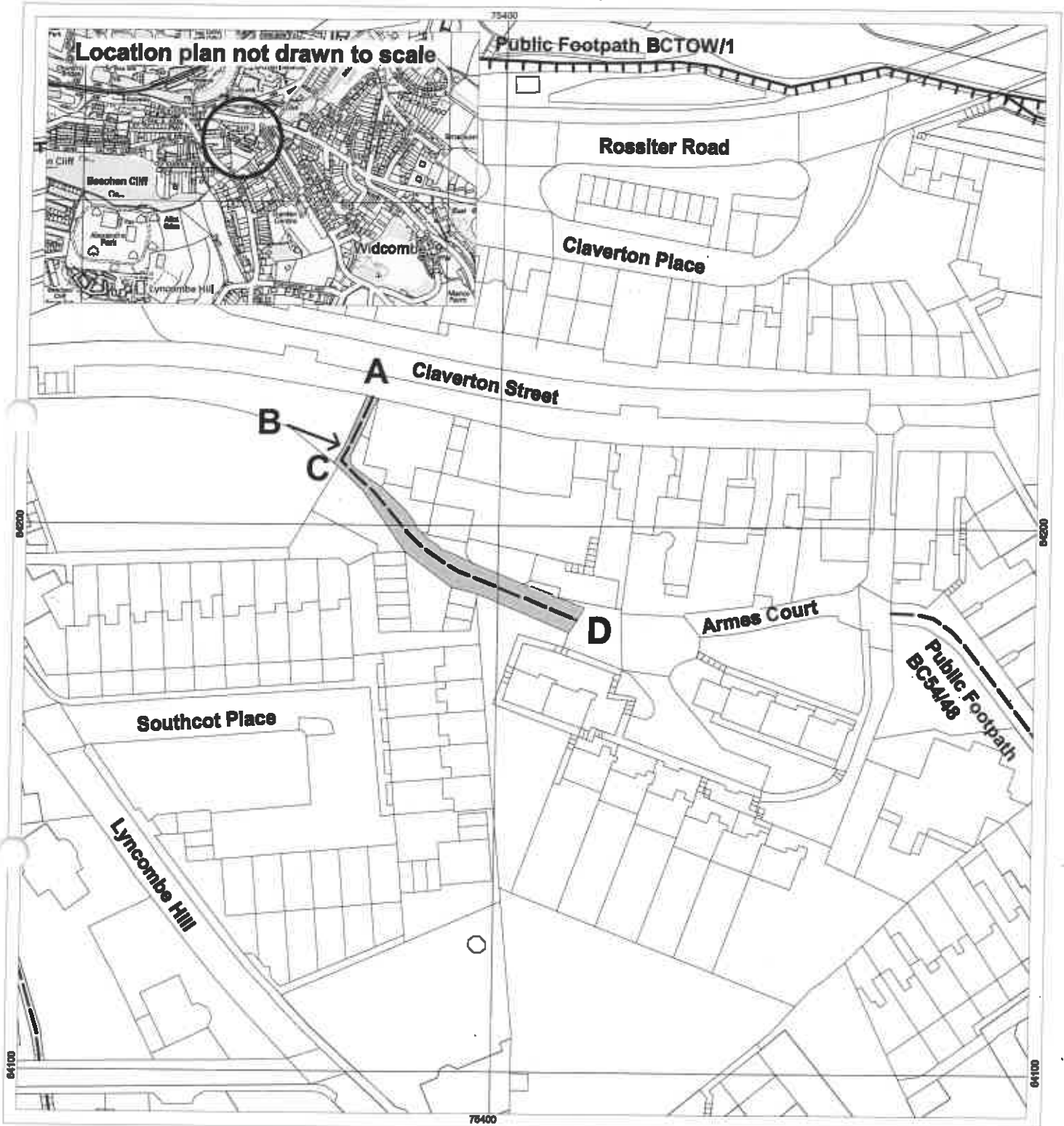
Other footpaths Included in this Order

Public footpath already legally recorded

Order Map



Scale 1:1000



Wildlife & Countryside Act 1981

Part 9

Bath & North East Somerset Council

Public Footpath BC54/47 at Widcombe Ward, Bath. City of Bath Definitive Map and Statement Modification Order (No.17 - Widcombe) 2019

Key Footpath to be added to the Definitive Map and Statement.

A B C D E F G

ST 7512 6413

ST 7511 6419

The width of the footpath to be recorded is shown shaded and varies between 0.9 metres - 3.1 metres

Other footpaths Included in this Order

|||||

Public footpath already legally recorded

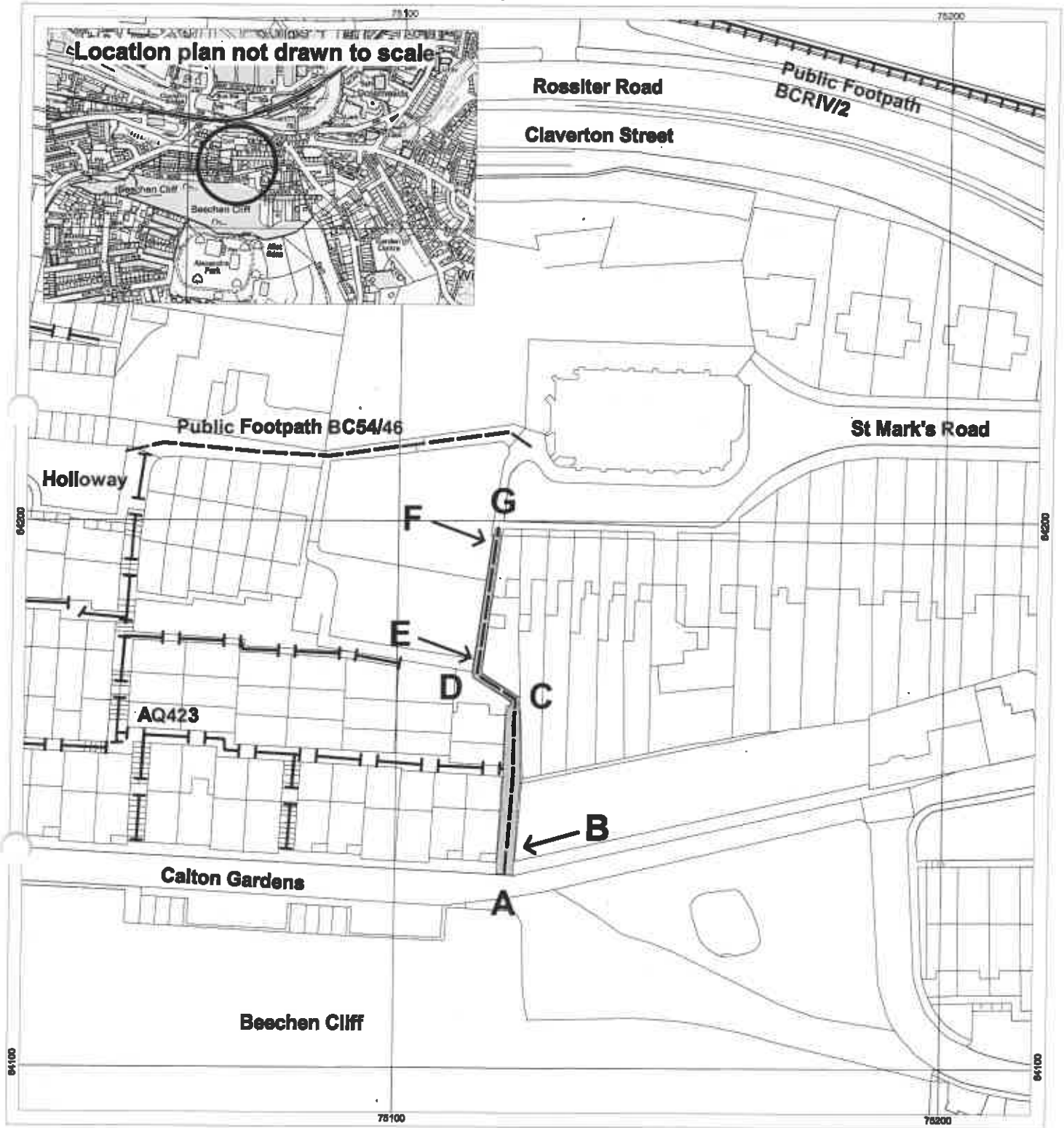
—|—|—|—|

Unaffected other path

Order Map



Scale 1:1000



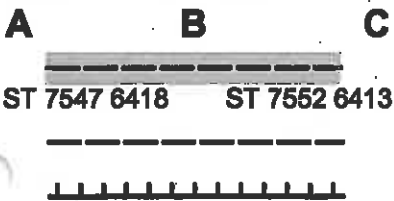
Wildlife & Countryside Act 1981

Part 10

Bath & North East Somerset Council

Public Footpath BC54/48 at Widcombe Ward, Bath. City of Bath Definitive Map and Statement Modification Order (No.17 - Widcombe) 2019

Key Footpath to be added to the Definitive Map and Statement.



The width of the footpath to be recorded is shown shaded and varies between 2.4 metres - 3.7 metres

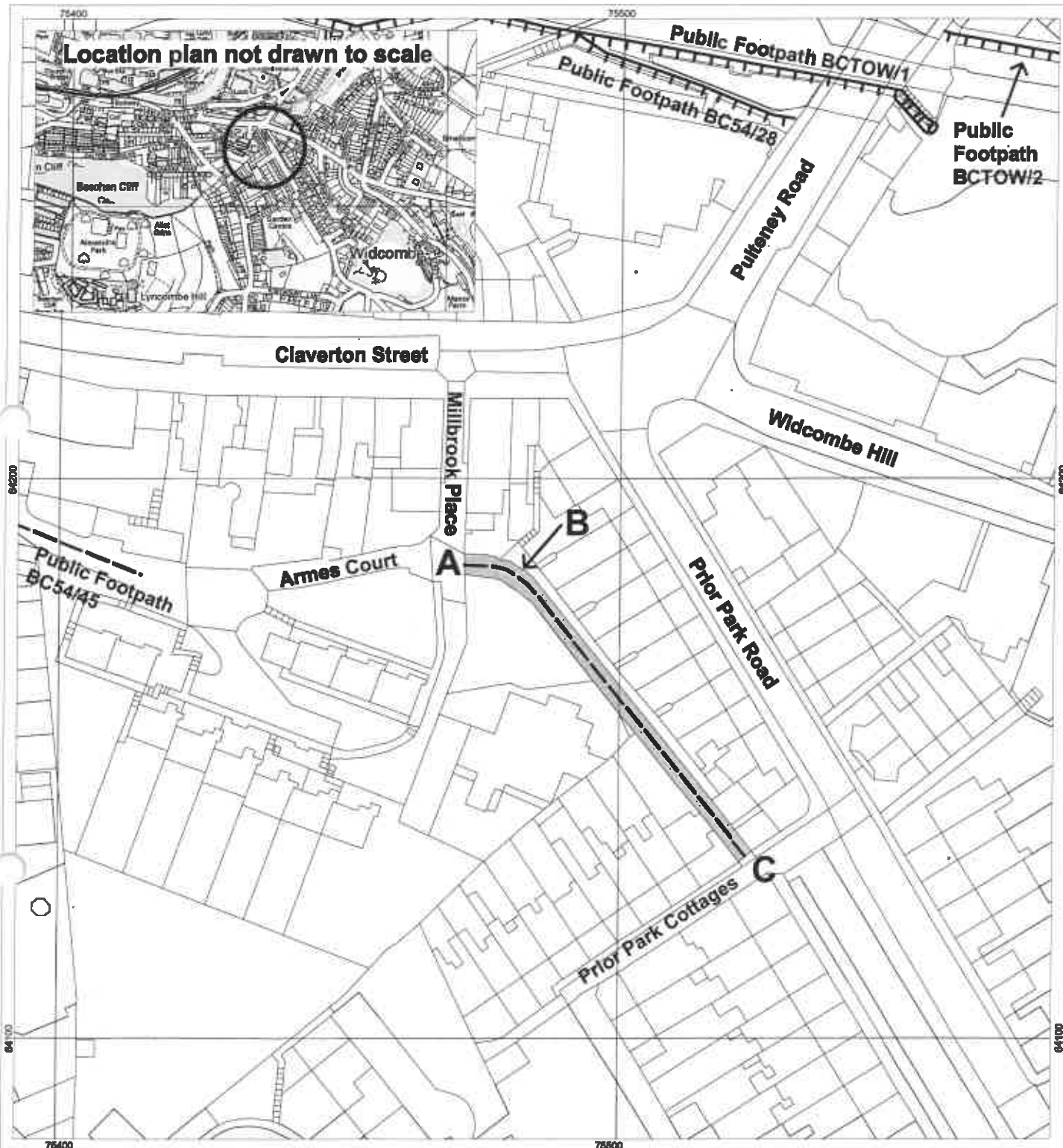
Other footpaths included in this Order

Public footpath already legally recorded

Order Map



Scale 1:1000



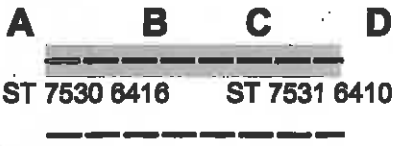
Wildlife & Countryside Act 1981

Part 11

Bath & North East Somerset Council

Public Footpath BC54/49 at Widcombe Ward, Bath. City of Bath Definitive Map and Statement Modification Order (No.17 - Widcombe) 2019

Key Footpath to be added to the Definitive Map and Statement.



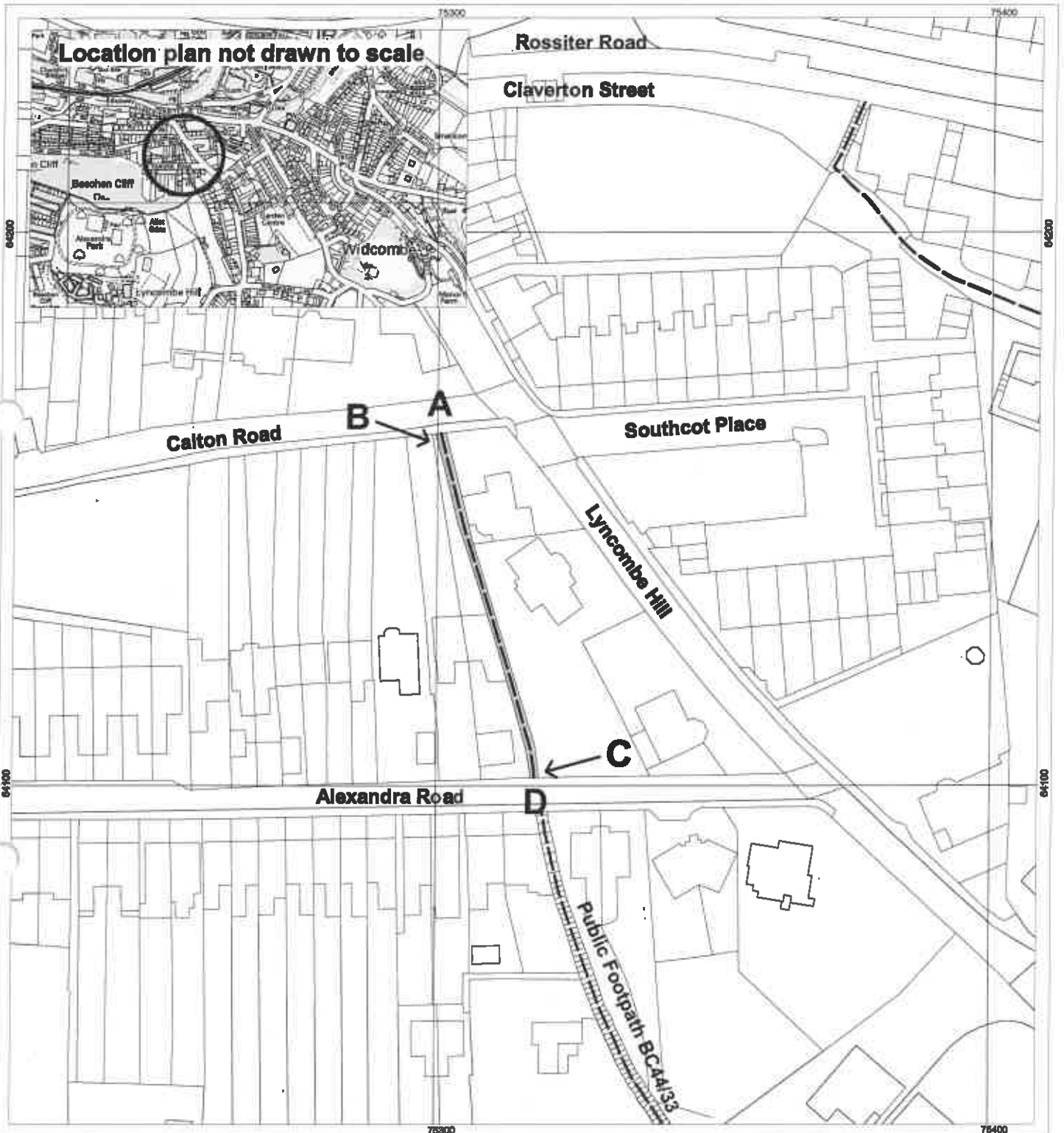
The width of the footpath to be recorded is shown shaded and varies between 1.5 metres - 1.9 metres

Other footpaths included in this Order

Order Map



Scale 1:1000



Wildlife & Countryside Act 1981

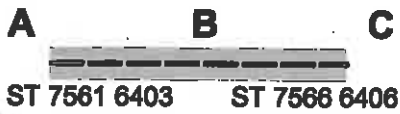
Part 12

Bath & North East Somerset Council

Public Footpath BC54/50 at Widcombe Ward, Bath. City of Bath Definitive Map and Statement Modification Order (No.17 - Widcombe) 2019

Key

Footpath to be added to the Definitive Map and Statement.

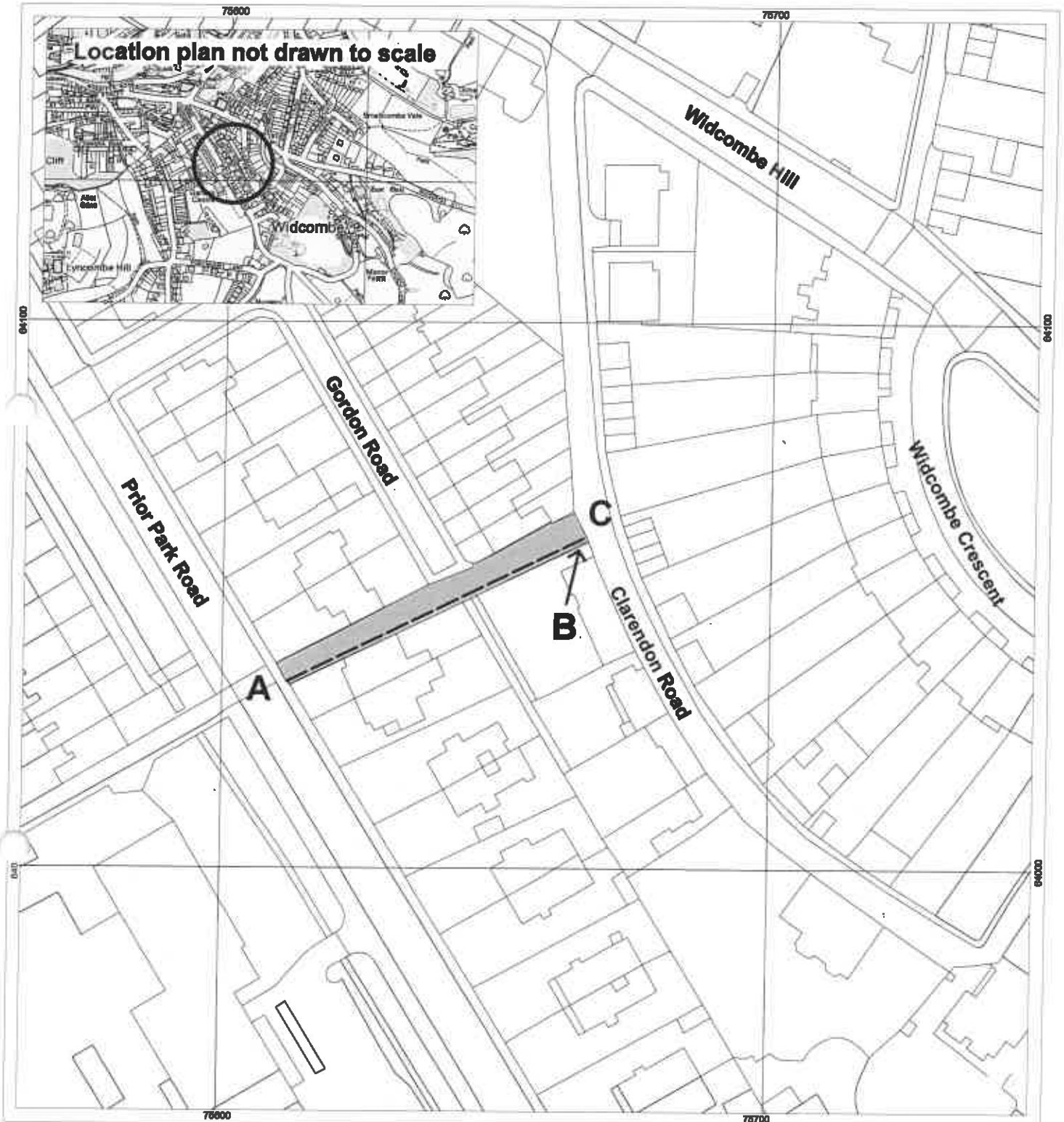


The width of the footpath to be recorded is shown shaded and varies between 4.5 metres - 6.1 metres

Order Map



Scale 1:1000



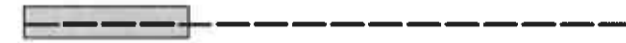
Wildlife & Countryside Act 1981

Part 13

Bath & North East Somerset Council
 Public Footpath BC63/1 at Widcombe Ward, Bath. City of Bath Definitive Map and Statement
 Modification Order (No.17 - Widcombe) 2019

Key Footpath to be added to the Definitive Map and Statement.

A B C D E F G H I J K L M N



ST 7612 6354

ST 7663 6295

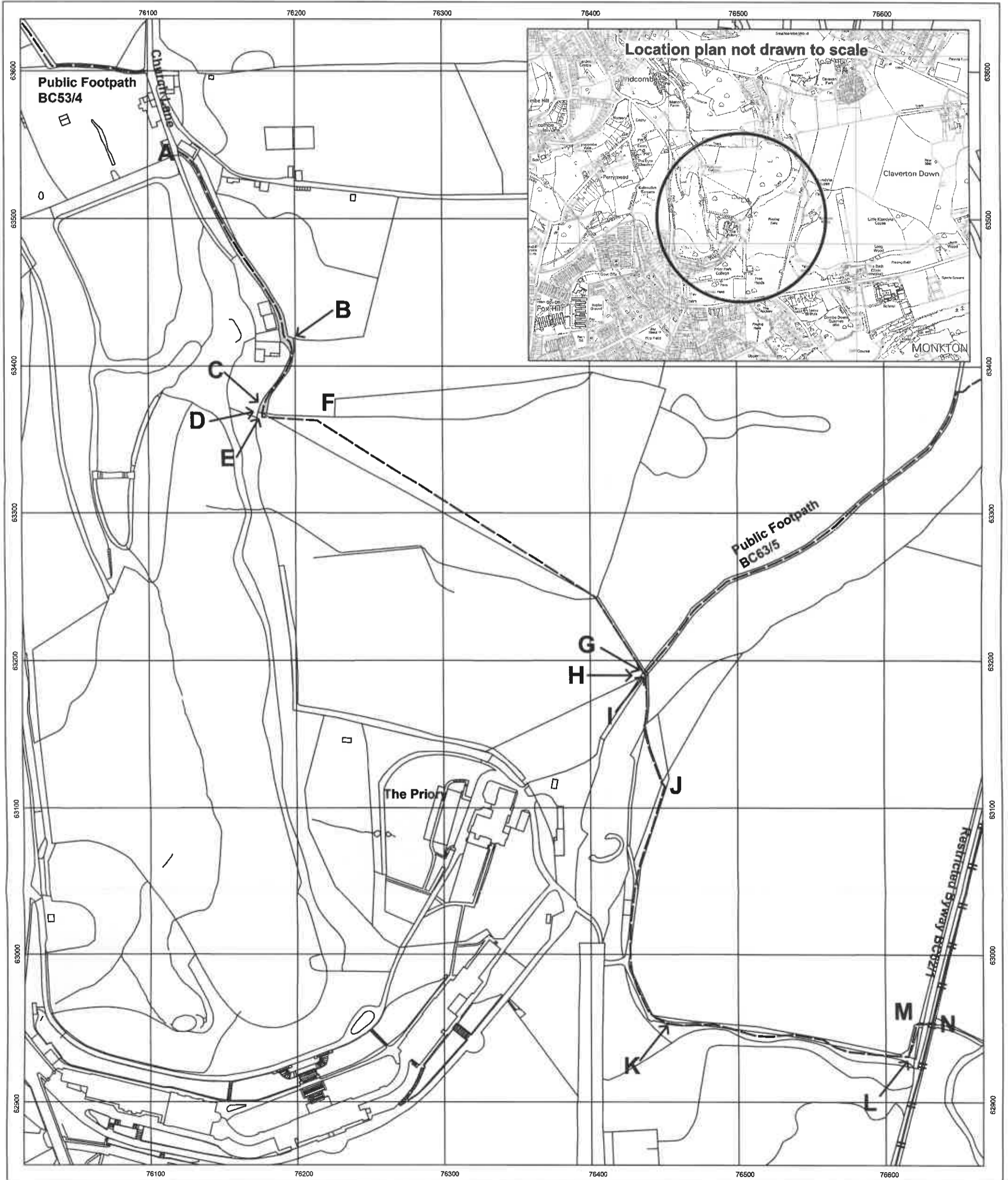
The width of the footpath to be recorded is shown shaded and varies between 1.4 metres - 3.5 metres;
 1.8 metres between Points D and J
 2.5 metres between Points J and N

Order Map



Scale 1:2500

----- Other footpaths included in this Order
 -|-|-|- Restricted Byway already legally recorded



Wildlife & Countryside Act 1981

Part 14

Bath & North East Somerset Council

Public Footpath BC63/3 at Widcombe Ward, Bath. City of Bath Definitive Map and Statement Modification Order (No.17 - Widcombe) 2019

Key Footpath to be added to the Definitive Map and Statement.

A  **B**
ST 7647 6389 ST 7678 6378

The width of the footpath to be recorded is shown shaded and varies between 1.5 metres - 3.4 metres

Order Map

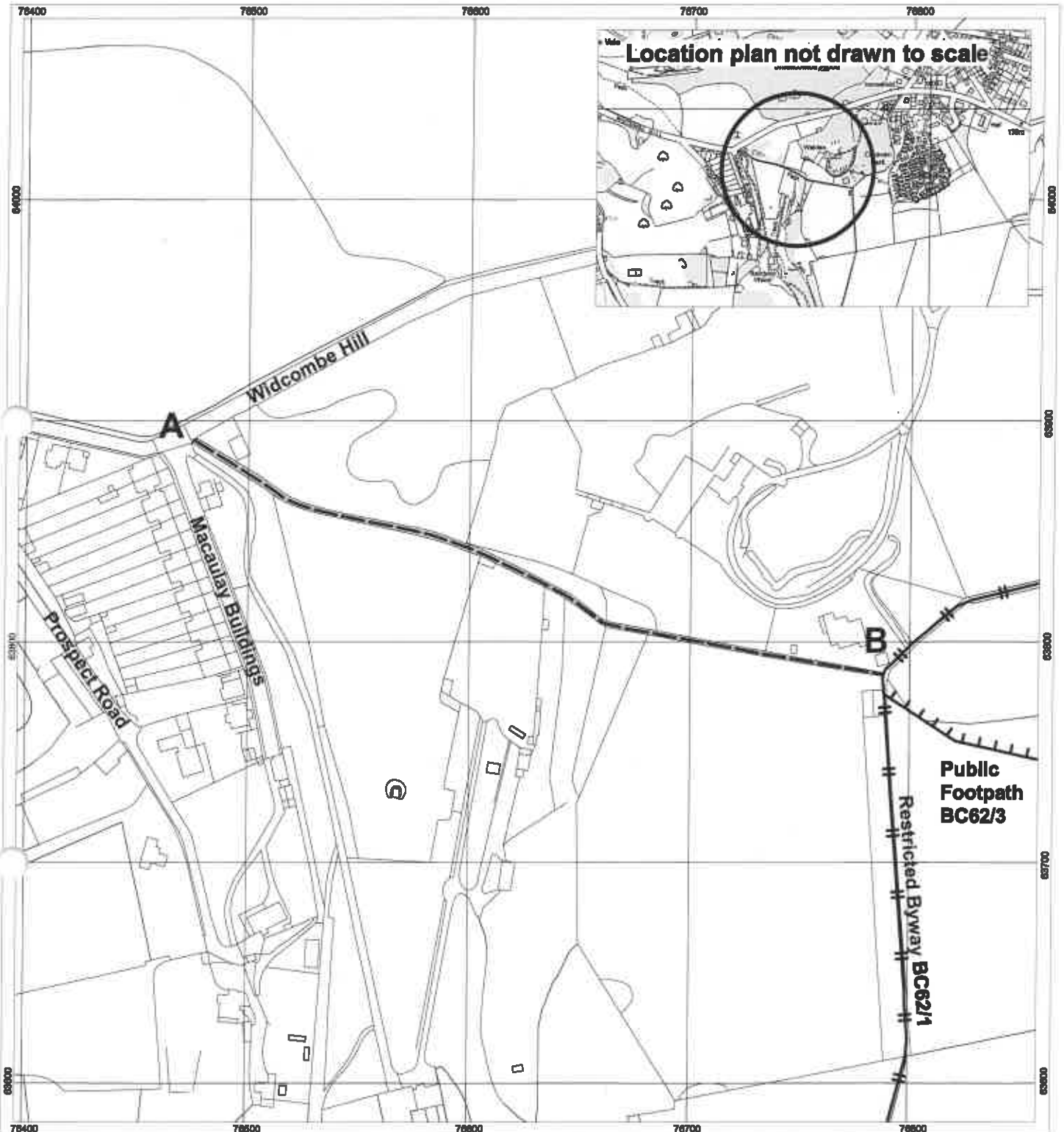


Scale 1:2500



Restricted Byway already legally recorded

Public footpath already legally recorded



Wildlife & Countryside Act 1981

Part 15

Bath & North East Somerset Council

Public Footpath BC63/4 at Widcombe Ward, Bath. City of Bath Definitive Map and Statement Modification Order (No.17 - Widcombe) 2019

Key Footpath to be added to the Definitive Map and Statement.

A **B** **C** **D** The width of the footpath to be recorded is 1.8 metres

ST 7665 6339 ST 7675 6344

Other footpaths included in this Order

==

Restricted Byway already legally recorded

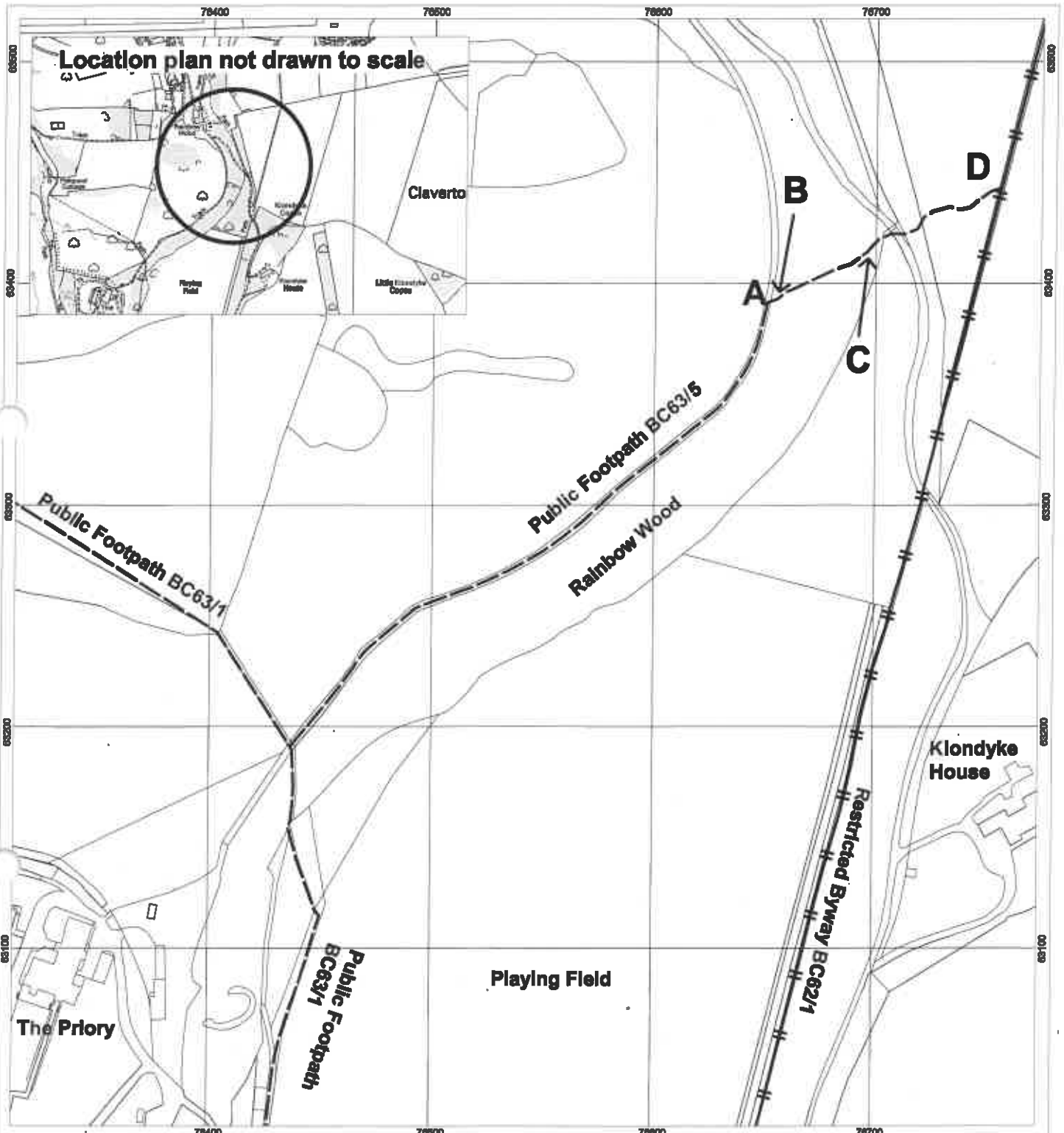
|||||

Public footpath already legally recorded

Order Map



Scale 1:2500



Wildlife & Countryside Act 1981

Part 16

Bath & North East Somerset Council

Public Footpath BC63/5 at Widcombe Ward, Bath. City of Bath Definitive Map and Statement Modification Order (No.17 - Widcombe) 2019

Key Footpath to be added to the Definitive Map and Statement.

A  **B** The width of the footpath to be recorded is 3.0 metres
ST 7643 6319 ST 7665 6339



Other footpaths included in this Order



Restricted Byway already legally recorded

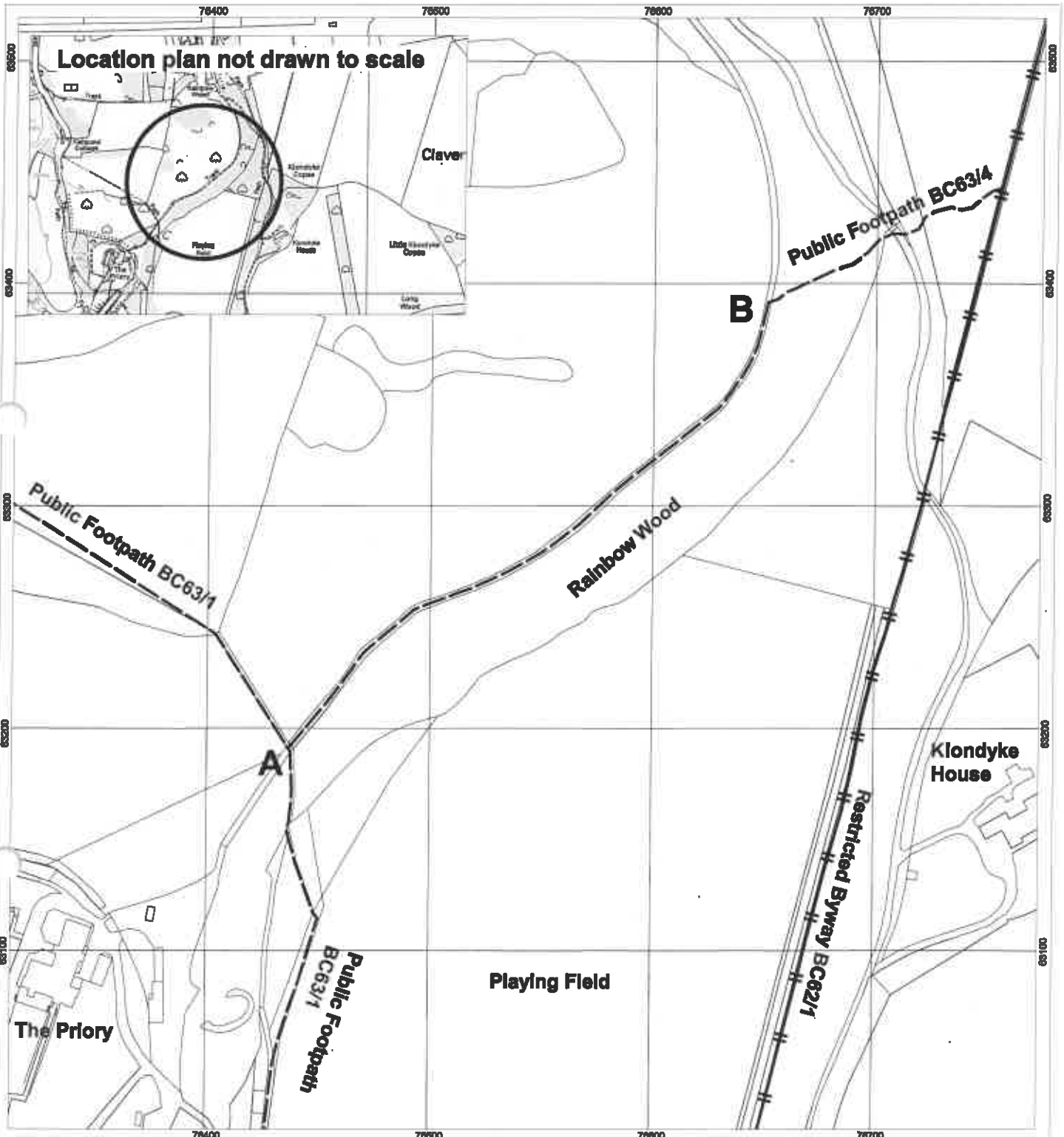


Public footpath already legally recorded

Order Map



Scale 1:2500



Location plan not drawn to scale



Wildlife & Countryside Act 1981

Part 17

Bath & North East Somerset Council.

Public Footpath BC64/7 at Widcombe Ward, Bath. City of Bath Definitive Map and Statement Modification Order (No.17 - Widcombe) 2019

Key Footpath to be added to the Definitive Map and Statement.

Order Map

A B C D The width of the footpath to be recorded is 1.8 metres,



ST 7620 6417 ST 7632 6392

Scale 1:2000



Public footpath already legally recorded

