

PUBLIC PATH CREATION ORDER

HIGHWAYS ACT 1980

BATH AND NORTH EAST SOMERSET COUNCIL

**BATH AND NORTH EAST SOMERSET COUNCIL
(CASTLE PRIMARY SCHOOL, KEYNSHAM)
PUBLIC PATH CREATION ORDER 2018**

This Order is made by Bath and North East Somerset Council ("the authority") under section 26 of the Highways Act 1980 ("the 1980 Act") because it appears to the authority that, having regard to the matters set out in section 26(1), there is a need for a public bridleway over the land to which this order relates, and that it is expedient that the path should be created.

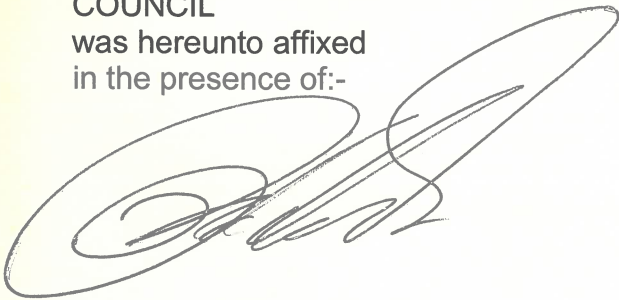
BY THIS ORDER:

1. There shall be at the end of 28 days from the date of confirmation of this order a public bridleway over the land at Keynsham described in Part 1 of the Schedule to this order and shown by a bold broken line on the map attached to this order.
2. The rights conferred on the public under this order shall be subject to the limitations and conditions set out in Part 2 of the Schedule.

Given under the Common Seal of the Bath and North East Somerset Council on the 18th day of January 2018.

The COMMON SEAL of the
BATH AND NORTH EAST SOMERSET
COUNCIL

was hereunto affixed
in the presence of:-



Authorised signatory

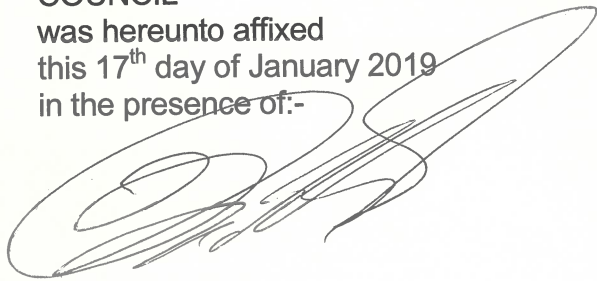


8727

In pursuance of its powers conferred by Schedule 6 to the Highways Act 1980, the Council hereby confirms the foregoing Order

The COMMON SEAL of the
BATH AND NORTH EAST SOMERSET
COUNCIL

was hereunto affixed
this 17th day of January 2019
in the presence of:-



Authorised signatory



SCHEDULE

PART 1

DESCRIPTION OF LAND

A public bridleway commencing from a junction with Newlands Road at grid reference ST 6486 6751 (Point A on the Order Map) and proceeding in a generally south-southeasterly direction for approximately 51 metres to grid reference ST 6487 6746 (Point B on the Order Map) and turning in a generally southwesterly direction for approximately 17 metres to grid reference ST 6487 6745 (Point C on the Order Map) and turning in a generally south-southeasterly direction for approximately 87 metres to grid reference ST 6491 6738 (Point D on the Order Map) and turning in a generally south-southwesterly direction for approximately 10 metres to a junction with Greenfield Road at grid reference ST 6490 6737 (Point E on the Order Map).

Width: 3.5 metres as shown shaded grey on the Order Map between grid references ST 6486 6751 (Point A on the Order Map) and ST 6487 6746 (Point B on the Order Map)

Varying between 2.4 metres and 4.3 metres as shown shaded grey on the Order Map between grid references ST 6487 6746 (Point B on the Order Map) and ST 6487 6745 (Point C on the Order Map)

3 metres as shown shaded grey on the Order Map between grid references ST 6487 6745 (Point C on the Order Map) and ST 6490 6737 (Point E on the Order Map).

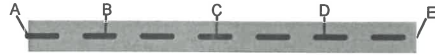
PART 2

LIMITATIONS AND CONDITIONS

None.

**THIS MAP FORMS PART OF THE BATH AND NORTH EAST SOMERSET COUNCIL
(CASTLE PRIMARY SCHOOL, KEYNSHAM) PUBLIC PATH CREATION ORDER 2018**

Public bridleway to be created



Scale 1:1250



Unaffected public footpath

