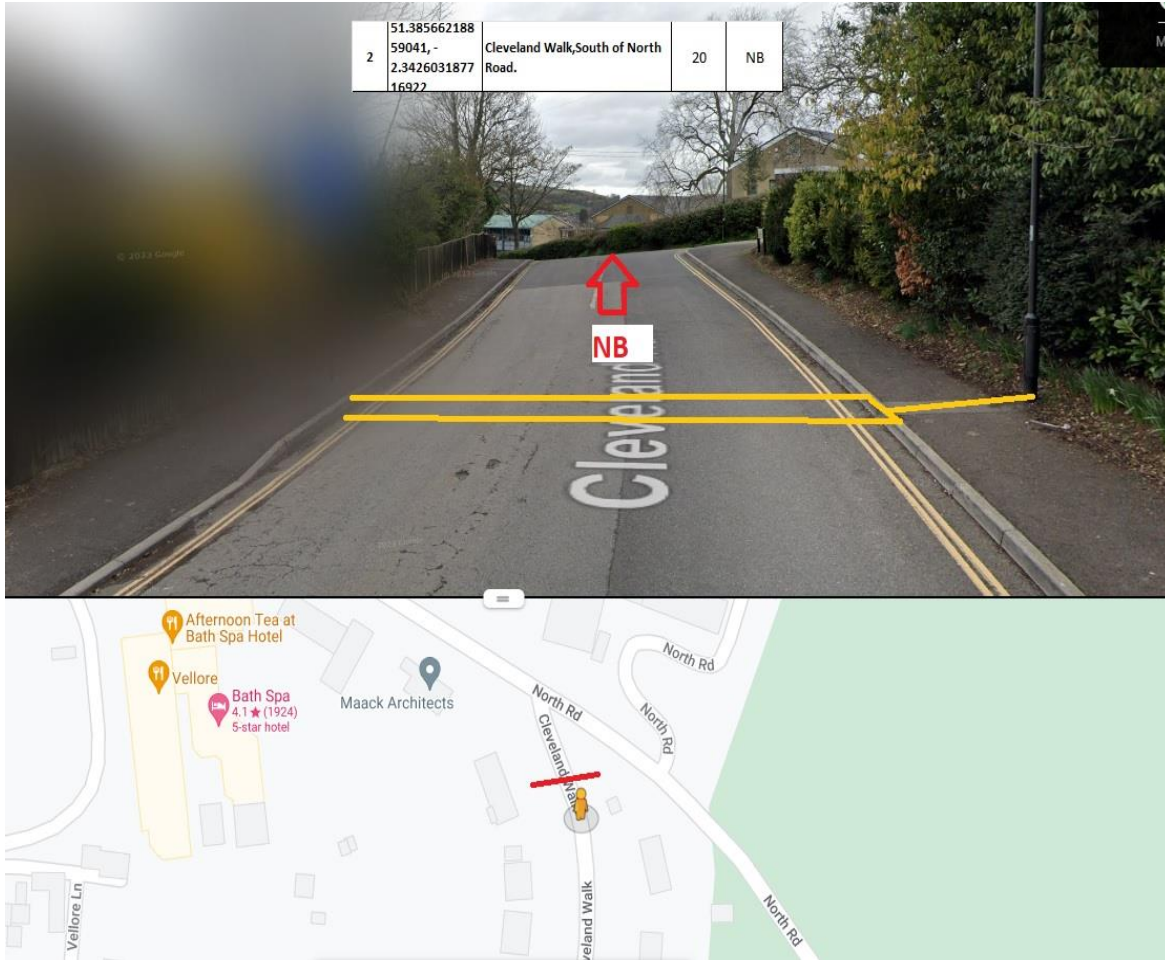


Site Number 23388-2
Description Cleveland Walk, South of North Road
Direction Southbound

Location

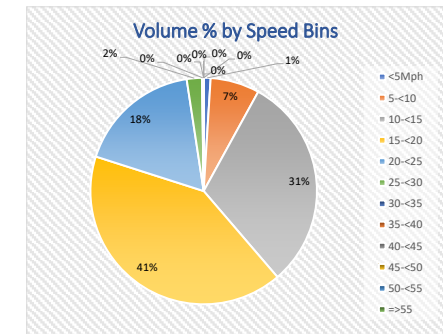
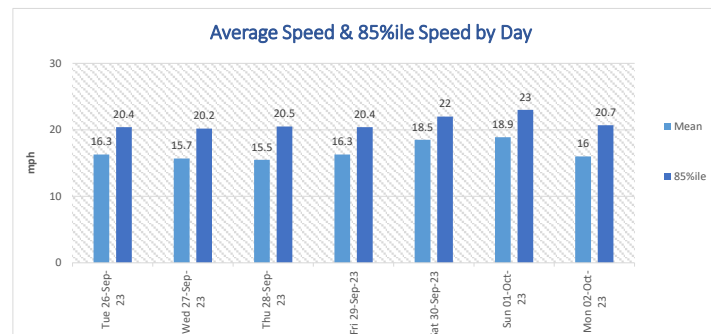
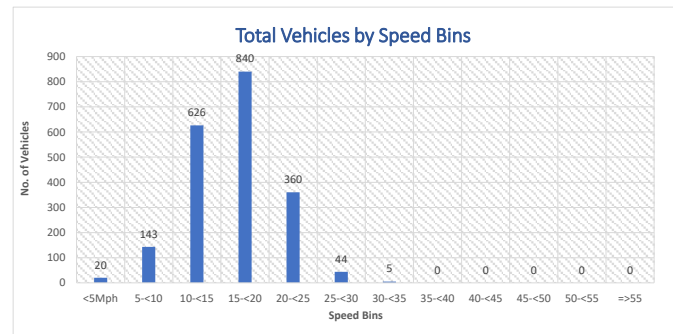


Observations

Site Number 23388-2
 Description Cleveland Walk,South of North Road
 Direction Southbound
 Posted Speed Limit(mph) 20mph

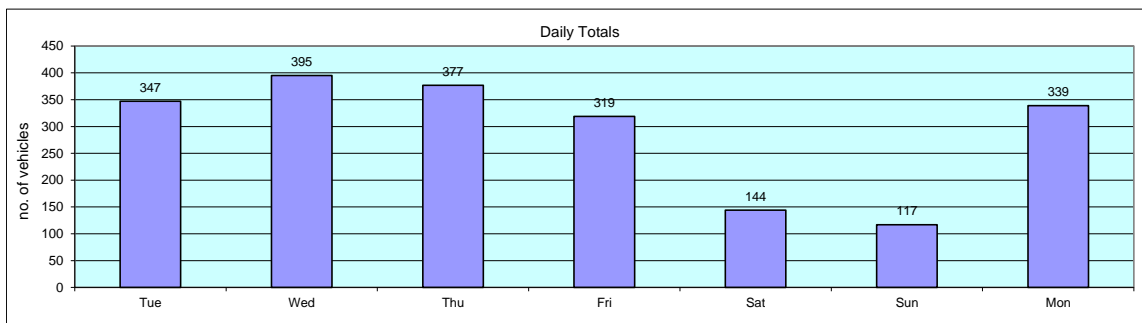
Start Date	End Date	Total Vehicles	5 Day Ave.	7 Day Ave.	Average 85%ile Speed	Average Mean Speed	Standard Dev.
Tue 26-Sep-23	Mon 02-Oct-23	2038	355	291	20.8	16.3	4.5

Time Period	Total Vehicles	85%ile Speed	Mean Speed	Stand Dev.	<5Mph	5-<10	10-<15	15-<20	20-<25	25-<30	30-<35	35-<40	40-<45	45-<50	50-<55	=>55
Tue 26-Sep-23	347	20.4	16.3	4.5	5	20	110	144	62	5	1	0	0	0	0	0
Wed 27-Sep-23	395	20.2	15.7	4.4	5	29	154	143	53	11	0	0	0	0	0	0
Thu 28-Sep-23	377	20.5	15.5	4.7	6	43	116	149	55	7	1	0	0	0	0	0
Fri 29-Sep-23	319	20.4	16.3	4.2	1	17	107	138	51	4	1	0	0	0	0	0
Sat 30-Sep-23	144	22	18.5	3.6	0	3	16	75	45	3	2	0	0	0	0	0
Sun 01-Oct-23	117	23	18.9	4.1	0	4	18	51	37	7	0	0	0	0	0	0
Mon 02-Oct-23	339	20.7	16	4.6	3	27	105	140	57	7	0	0	0	0	0	0
Total Vehicles																
[--]	2038	20.8	16.3	4.5	20	143	626	840	360	44	5	0	0	0	0	0



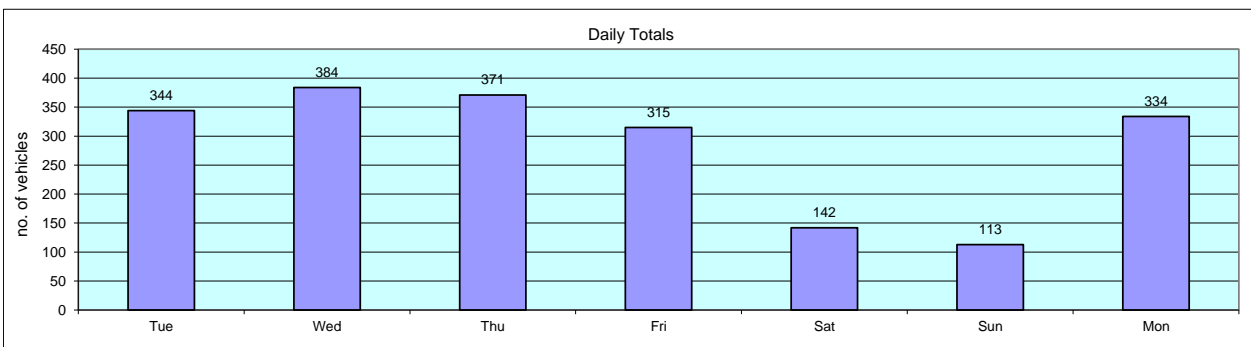
Site Number 23388-2
Description Cleveland Walk, South of North Road
Direction Southbound

Time	Tue 26-Sep-23	Wed 27-Sep-23	Thu 28-Sep-23	Fri 29-Sep-23	Sat 30-Sep-23	Sun 01-Oct-23	Mon 02-Oct-23	Weekday Av.	7day Av.
0100	1	0	0	0	0	0	0	0	0
0200	0	0	0	0	0	0	0	0	0
0300	0	0	0	0	0	0	0	0	0
0400	0	0	0	0	0	0	0	0	0
0500	0	0	0	0	0	0	0	0	0
0600	1	0	0	0	0	0	0	0	0
0700	4	0	0	0	0	0	0	1	1
0800	23	0	1	0	0	0	1	5	4
0900	105	4	1	0	1	0	2	22	16
1000	14	2	0	0	0	0	0	3	2
1100	20	1	0	0	0	1	0	4	3
1200	11	0	0	0	0	1	1	2	2
1300	16	0	0	0	0	0	0	3	2
1400	13	0	0	1	0	1	0	3	2
1500	17	0	0	0	0	0	0	3	2
1600	16	1	2	1	0	0	0	4	3
1700	42	2	2	0	0	0	1	9	7
1800	36	0	0	1	0	0	0	7	5
1900	16	1	0	1	0	0	0	4	3
2000	7	0	0	0	1	1	0	1	1
2100	4	0	0	0	0	0	0	1	1
2200	0	0	0	0	0	0	0	0	0
2300	0	0	0	0	0	0	0	0	0
2400	1	0	0	0	0	0	0	0	0
08-09	105	4	1	0	1	0	2	22	16
17-18	36	30	35	31	14	11	42	35	28
07-19	329	371	357	293	121	103	318	334	270
07-23	340	387	372	317	140	115	334	350	286
00-24	347	395	377	319	144	117	339	355	291



Site Number 23388-2
Description Cleveland Walk, South of North Road
Direction Southbound

Volumetric Summary - Motorised Vehicles									
Time	Tue 26-Sep-23	Wed 27-Sep-23	Thu 28-Sep-23	Fri 29-Sep-23	Sat 30-Sep-23	Sun 01-Oct-23	Mon 02-Oct-23	Weekday Av.	7day Av.
0100	1	0	0	0	0	1	0	0	0
0200	0	0	0	0	0	0	0	0	0
0300	0	0	0	0	0	0	0	0	0
0400	0	0	0	0	0	0	0	0	0
0500	0	0	1	0	0	0	1	0	0
0600	1	2	2	1	0	0	0	1	1
0700	4	5	2	1	1	0	3	3	2
0800	23	20	22	19	1	1	12	19	14
0900	105	94	87	100	5	4	96	96	70
1000	14	15	24	20	12	4	22	19	16
1100	19	14	16	9	7	6	19	15	13
1200	11	25	25	19	15	9	14	19	17
1300	16	19	21	17	14	11	14	17	16
1400	13	13	10	8	12	13	14	12	12
1500	17	22	12	15	13	10	17	17	15
1600	16	53	44	12	11	12	22	29	24
1700	41	44	42	27	9	11	27	36	29
1800	36	30	35	30	14	11	42	35	28
1900	16	11	13	13	7	8	14	13	12
2000	6	12	7	11	8	2	8	9	8
2100	4	1	5	5	3	6	3	4	4
2200	0	2	2	5	4	2	5	3	3
2300	0	1	1	3	3	1	0	1	1
2400	1	1	0	0	3	1	1	1	1
08-09	105	94	87	100	5	4	96	96	70
17-18	36	30	35	30	14	11	42	35	28
07-19	327	360	351	289	120	100	313	328	266
07-23	337	376	366	313	138	111	329	344	281
00-24	344	384	371	315	142	113	334	350	286



Site Number 23388-2
Description Cleveland Walk, South of North Road
Direction Southbound

26-Sep-23

Table with columns: Time, Total Motorised Vehicles, Totals, Cycles, Motor Cycles, Number Vehicle Classes, DFT 2010 + COBA Scheme, Percentage Vehicle classes, DFT 2010 + COBA Scheme, Vehicle Speed, P-Tile, Average Speed, Standard deviation. Rows include time intervals from 0015 to 2400 and summary rows for 08-09, 17-18, 07-19, 07-23, and 00-24.

Site Number 23388-2
Description Cleveland Walk, South of North Road
Direction Southbound

27-Sep-23

Table with columns: Time, Total Motorised Vehicles, Totals, Cycles, Motor Cycles, Number Vehicle Classes DFT 2010 + COBA Scheme (Car, LGV, 2 Axle Rigid, 3 Axle Rigid, 4 Axle Rigid, 3 Axle Artic., 4 Axle Artic., 5+ Axle Artic., Buses), Percentage Vehicle classes DFT 2010 + COBA Scheme (Cycles, Motor Cycles, Cars, LGV, 2 Axle Rigid, 3 Axle Rigid, 4 Axle Rigid, 3 Axle Artic., 4 Axle Artic., 5+ Axle Artic., Buses), Vehicle Speed (MPH 0-95), P-Tile 85%, Average Speed, Standard deviation.

Site Number 23388-2
Description Cleveland Walk, South of North Road
Direction Southbound

29-Sep-23

Table with columns: Time, Total Motorised Vehicles, Cycles, Motor Cycles, Number Vehicle Classes DFT 2010 + COBA Scheme (Car, LGV, 2 Axle Rigid, 3 Axle Rigid, 4 Axle Rigid, 3 Axle Artic, 4 Axle Artic, 5+ Axle Artic, Buses), Percentage Vehicle classes DFT 2010 + COBA Scheme (Cycles, Motor Cycles, Cars, LGV, 2 Axle Rigid, 3 Axle Rigid, 4 Axle Rigid, 3 Axle Artic, 4 Axle Artic, 5+ Axle Artic, Buses), Vehicle Speed (MPH 0-95), P-Tile 85%, Average Speed, Standard deviation.

Site Number 23388-2
Description Cleveland Walk, South of North Road
Direction Southbound

30-Sep-23

Table with columns: Time, Total Motorised Vehicles, Cycles, Motor Cycles, Number Vehicle Classes (Car, LGV, 2 Axle Rigid, 3 Axle Rigid, 4 Axle Rigid, 3 Axle Artic, 4 Axle Artic, 5+ Axle Artic, Buses), Percentage Vehicle classes, Vehicle Speed (MPH 0-95), P-Tile 85%, Average Speed, Standard deviation.

Site Number 23388-2
Description Cleveland Walk, South of North Road
Direction Southbound

01-Oct-23

Table with columns: Time, Total Motorised Vehicles, Totals, Cycles, Motor Cycles, Number Vehicle Classes (Car, LGV, 2 Axle Rigid, 3 Axle Rigid, 4 Axle Rigid, 3 Axle Artic, 4 Axle Artic, 5+ Axle Artic, Buses), Percentage Vehicle classes (Cycles, Motor Cycles, Cars, LGV, 2 Axle Rigid, 3 Axle Rigid, 4 Axle Rigid, 3 Axle Artic, 4 Axle Artic, 5+ Axle Artic, Buses), Vehicle Speed (MPH 0-95), P-Tile 85%, Average Speed, Standard deviation.

Site Number 23388-2
Description Cleveland Walk, South of North Road
Direction Southbound

02-Oct-23

Table with columns: Time, Total Motorised Vehicles, Totals, Cycles, Motor Cycles, Number Vehicle Classes (Car, LGV, 2 Axle Rigid, 3 Axle Rigid, 4 Axle Rigid, 3 Axle Artic, 4 Axle Artic, 5+ Axle Artic, Buses), Percentage Vehicle classes (Cycles, Motor Cycles, Cars, LGV, 2 Axle Rigid, 3 Axle Rigid, 4 Axle Rigid, 3 Axle Artic, 4 Axle Artic, 5+ Axle Artic, Buses), Vehicle Speed (MPH 0-95), P-Tile 85%, Average Speed, Standard deviation.

Site Number 23388-2
 Description Cleveland Walk, South of North Road
 Direction Southbound

Grand Total

Time	Total Motorised Vehicles	Totals	Cycles	Motor Cycles	Number Vehicle Classes DFT 2010 + COBA Scheme										Percentage Vehicle classes DFT 2010 + COBA Scheme										Vehicle Speed													P-Tile 85%	Average Speed	Standard deviation													
					Car	LGV	2 Axle Rigid	3 Axle Rigid	4 Axle Rigid	3 Axle Artic.	4 Axle Artic.	5+ Axle Artic.	Buses	Cycles	Motor Cycles	Cars	LGV	2 Axle Rigid	3 Axle Rigid	4 Axle Rigid	3 Axle Artic.	4 Axle Artic.	5+ Axle Artic.	Buses	MPH 0 <5mph	MPH 5 <10mph	MPH 10 <15mph	MPH 15 <20mph	MPH 20 <25mph	MPH 25 <30mph	MPH 30 <35mph	MPH 35 <40mph	MPH 40 <45mph	MPH 45 <50mph	MPH 50 <55mph	MPH 55 <60mph	MPH 60 <65mph				MPH 65 <70mph	MPH 70 <75mph	MPH 75 <80mph	MPH 80 <85mph	MPH 85 <90mph	MPH 90 <95mph	MPH 95 <100mph						
--	2003	2038	35	39	1627	276	55	4	1	1	0	0	0	1.717	1.914	79.83	13.54	2.699	0.196	0.049	0.049	0	0	0	20	143	626	840	360	44	5	0	0	0	0	0	0	0	0	0	0	0	0	0	0	0	0	0	0	0	20.8	16.3	4.5

Site Number 23398-2
Description Cleveland Walk,South of North Road
Direction Southbound

Grand Total

Table with columns: Time, Motorised Vehicles, Totals, Cycles, Motor Cycles, Car, LGV, 2 Axle Rigid, 3 Axle Rigid, 4 Axle Rigid, 3 Axle Artic, 4 Axle Artic, 5+ Axle Artic, Buses, Cycles, Motor Cycles, Cars, LGV, 2 Axle Rigid, 3 Axle Rigid, 4 Axle Rigid, 3 Axle Artic, 4 Axle Artic, 5+ Axle Artic, Buses, Vehicle Speed (MPH 0-95), MPH <5mph, MPH <10mph, MPH <15mph, MPH <20mph, MPH <25mph, MPH <30mph, MPH <35mph, MPH <40mph, MPH <45mph, MPH <50mph, MPH <55mph, MPH <60mph, MPH <65mph, MPH <70mph, MPH <75mph, MPH <80mph, MPH <85mph, MPH <90mph, MPH <95mph, MPH <100mph.