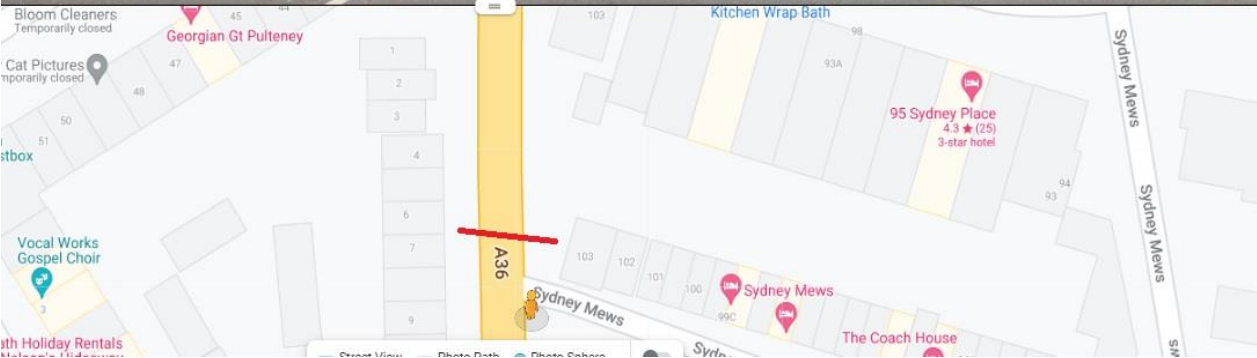
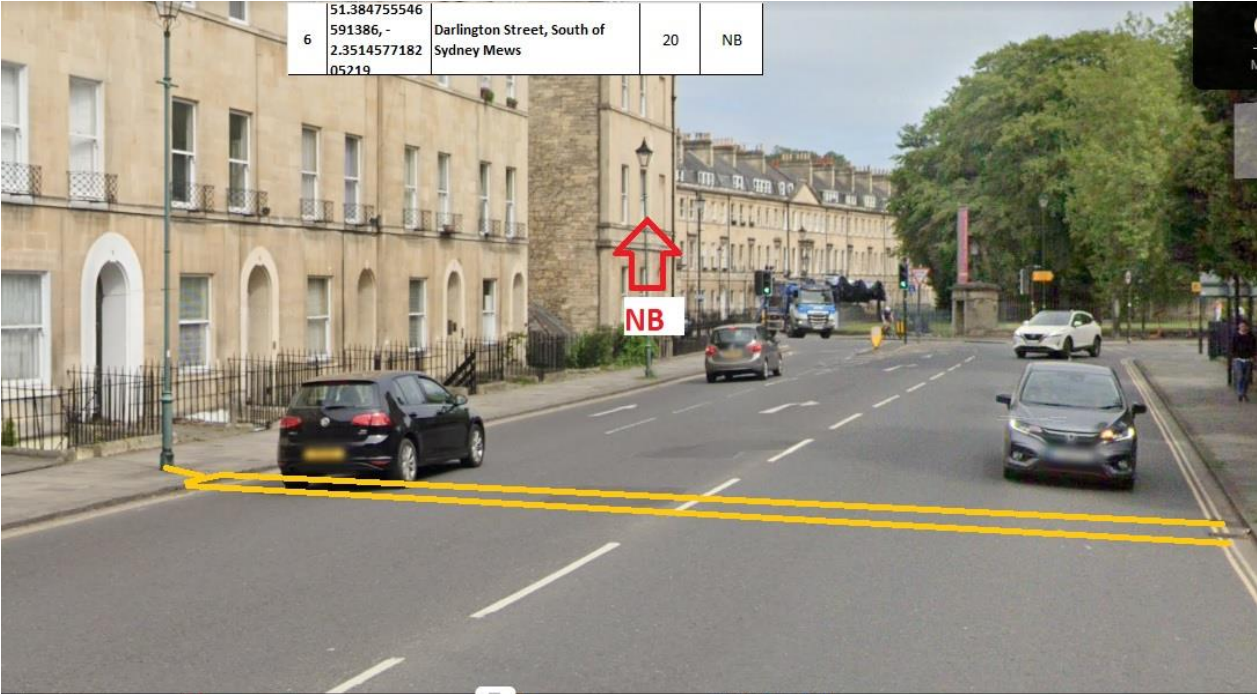


Site Number 23388-6
Description Darlington Street, South of Sydney Mews
Direction Southbound

Location

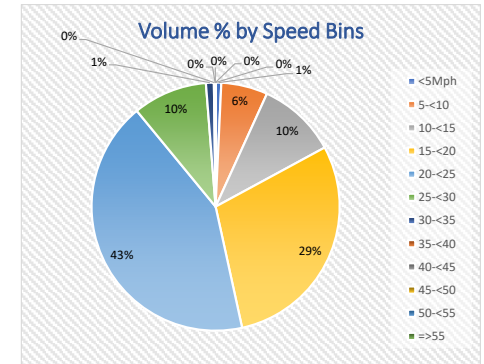
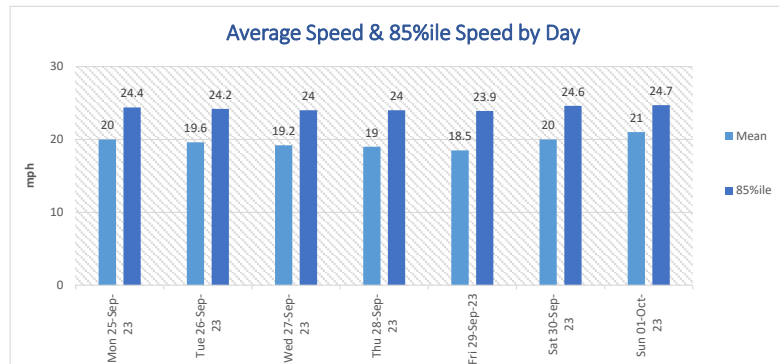
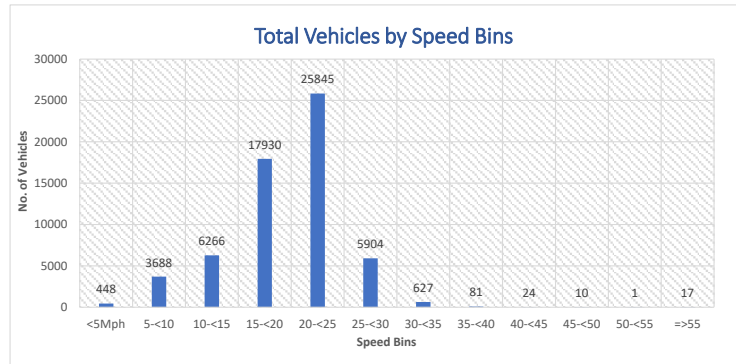


Observations

Site Number 23388-6
Description Darlington Street, South of Sydney Mews
Direction Southbound
Posted Speed Limit(mph) 20mph

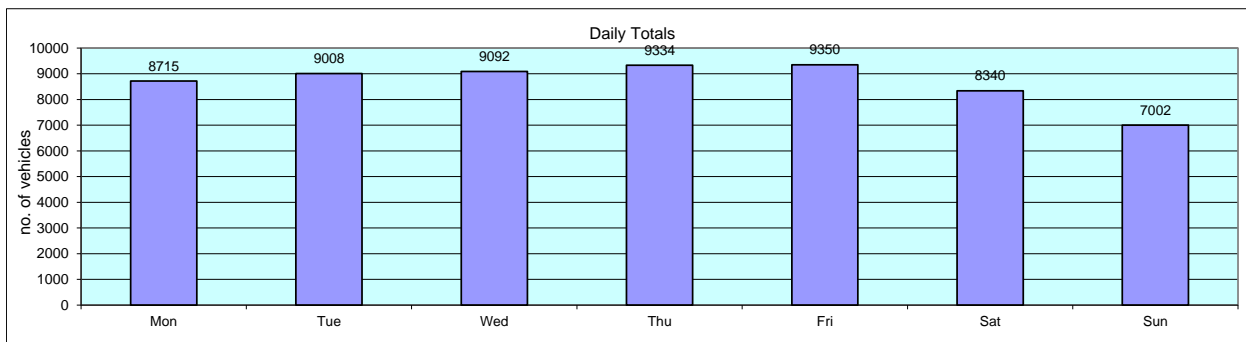
Start Date	End Date	Total Vehicles	5 Day Ave.	7 Day Ave.	Average 85%ile Speed	Average Mean Speed	Standard Dev.
Mon 25-Sep-23	Sun 01-Oct-23	60841	9100	8692	24.3	19.6	5.3

Time Period	Total Vehicles	85%ile Speed	Mean Speed	Stand Dev.	<5Mph	5-<10	10-<15	15-<20	20-<25	25-<30	30-<35	35-<40	40-<45	45-<50	50-<55	=>55
Mon 25-Sep-23	8715	24.4	20	5.1	55	337	793	2565	3956	909	85	9	1	0	0	5
Tue 26-Sep-23	9008	24.2	19.6	5.2	79	510	899	2657	3911	853	76	18	3	2	0	0
Wed 27-Sep-23	9092	24	19.2	5.3	50	627	1031	2802	3683	783	105	8	1	1	0	1
Thu 28-Sep-23	9334	24	19	5.7	90	801	1119	2743	3652	827	75	12	7	2	0	6
Fri 29-Sep-23	9350	23.9	18.5	5.8	110	937	1304	2607	3498	782	96	8	3	2	1	2
Sat 30-Sep-23	8340	24.6	20	5.3	57	406	747	2442	3628	923	110	16	7	1	0	3
Sun 01-Oct-23	7002	24.7	21	4	7	70	373	2114	3517	827	80	10	2	2	0	0
Total Vehicles																
[--]	60841	24.3	19.6	5.3	448	3688	6266	17930	25845	5904	627	81	24	10	1	17



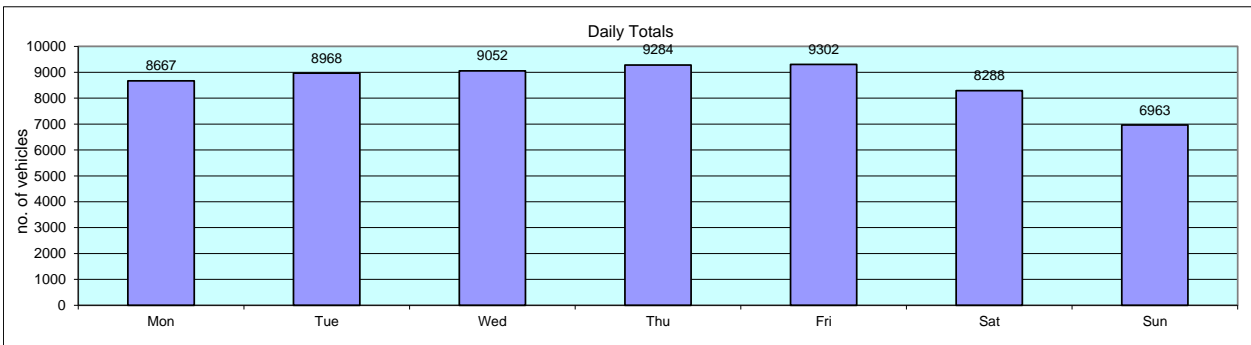
Site Number 23388-6
Description Darlington Street, South of Sydney Mews
Direction Southbound

Time	Mon 25-Sep-23	Tue 26-Sep-23	Wed 27-Sep-23	Thu 28-Sep-23	Fri 29-Sep-23	Sat 30-Sep-23	Sun 01-Oct-23	Weekday Av.	7day Av.
0100	27	0	1	0	0	1	0	6	4
0200	22	0	1	0	0	1	0	5	3
0300	15	0	0	0	0	0	0	3	2
0400	15	3	0	0	1	0	0	4	3
0500	17	0	0	2	0	0	0	4	3
0600	46	1	0	1	0	0	0	10	7
0700	171	4	1	2	2	1	1	36	26
0800	554	4	5	2	1	1	1	113	81
0900	788	3	4	7	6	3	3	162	116
1000	628	2	1	2	2	7	0	127	92
1100	607	1	3	4	1	2	2	123	89
1200	637	1	4	2	3	4	7	129	94
1300	569	2	4	4	3	7	6	116	85
1400	614	3	3	4	3	7	5	125	91
1500	561	1	0	2	4	5	6	114	83
1600	639	5	4	4	4	4	4	131	95
1700	634	3	1	5	1	4	2	129	93
1800	683	2	4	2	6	3	2	139	100
1900	552	3	1	5	4	0	0	113	81
2000	390	0	1	0	6	0	0	79	57
2100	232	0	0	1	0	0	0	47	33
2200	180	1	2	1	1	2	0	37	27
2300	77	0	0	0	0	0	0	15	11
2400	57	1	0	0	0	0	0	12	8
08-09	788	3	4	7	6	3	3	162	116
17-18	683	661	641	639	637	567	546	652	625
07-19	7466	7587	7643	7736	7765	6885	5850	7639	7276
07-23	8345	8599	8641	8893	8906	7863	6662	8677	8273
00-24	8715	9008	9092	9334	9350	8340	7002	9100	8692



Site Number 23388-6
Description Darlington Street, South of Sydney Mews
Direction Southbound

Volumetric Summary - Motorised Vehicles									
Time	Mon 25-Sep-23	Tue 26-Sep-23	Wed 27-Sep-23	Thu 28-Sep-23	Fri 29-Sep-23	Sat 30-Sep-23	Sun 01-Oct-23	Weekday Av.	7day Av.
0100	27	24	48	34	46	72	88	36	48
0200	22	22	26	24	33	55	40	25	32
0300	15	16	22	19	14	29	31	17	21
0400	15	14	17	21	26	31	38	19	23
0500	17	18	36	31	30	30	25	26	27
0600	46	52	64	60	56	36	21	56	48
0700	170	193	161	156	134	78	38	163	133
0800	550	552	581	531	546	198	78	552	434
0900	781	809	798	808	775	440	197	794	658
1000	626	657	631	632	578	623	396	625	592
1100	607	539	594	626	640	648	635	601	613
1200	636	629	582	569	636	680	642	610	625
1300	568	542	609	663	663	738	630	609	630
1400	609	569	545	597	646	709	572	593	607
1500	556	585	635	620	602	637	545	600	597
1600	637	630	685	665	693	594	573	662	640
1700	628	748	694	681	711	536	563	692	652
1800	677	659	637	637	631	564	544	648	621
1900	551	638	618	664	606	471	437	615	569
2000	385	453	435	472	435	347	331	436	408
2100	232	242	228	308	288	263	242	260	258
2200	178	203	207	242	230	185	155	212	200
2300	77	113	125	133	181	181	84	126	128
2400	57	61	74	91	102	143	58	77	84
08-09	781	809	798	808	775	440	197	794	658
17-18	677	659	637	637	631	564	544	648	621
07-19	7426	7557	7609	7693	7727	6838	5812	7602	7237
07-23	8298	8568	8604	8848	8861	7814	6624	8636	8231
00-24	8667	8968	9052	9284	9302	8288	6963	9055	8646



Site Number 23388-6
Description Darlington Street, South of Sydney Mews
Direction Southbound

25-Sep-23

Table with columns: Time, Total Motorised Vehicles, Totals, Cycles, Motor Cycles, Number Vehicle Classes, DFT 2010 + COBA Scheme, Percentage Vehicle classes, DFT 2010 + COBA Scheme, Vehicle Speed, P-Tile, Average Speed, Standard deviation. Rows include time intervals from 0015 to 2400 and summary rows for 08-09, 17-18, 07-19, 07-23, and 00-24.

Site Number 23388-6
Description Darlington Street, South of Sydney Mews
Direction Southbound

26-Sep-23

Table with columns: Time, Total Motorised Vehicles, Cycles, Motor Cycles, Number Vehicle Classes, Percentage Vehicle classes, and Vehicle Speed. It contains 24 rows of data, each representing a time interval from 0015 to 2400. The final row is a summary row with bolded values.

Site Number 23388-6
Description Darlington Street, South of Sydney Mews
Direction Southbound

28-Sep-23

Table with columns: Time, Total Motorised Vehicles, Cycles, Motor Cycles, Number Vehicle Classes (Car, LGV, 2 Axle Rigid, 3 Axle Rigid, 4 Axle Rigid, 3 Axle Artic, 4 Axle Artic, 5+ Axle Artic, Buses), Percentage Vehicle classes (Cycles, Motor Cycles, Cars, LGV, 2 Axle Rigid, 3 Axle Rigid, 4 Axle Rigid, 3 Axle Artic, 4 Axle Artic, 5+ Axle Artic, Buses), Vehicle Speed (MPH 0-95), P-Tile 85%, Average Speed, Standard deviation.

Site Number 23388-6
Description Darlington Street, South of Sydney Mews
Direction Southbound

29-Sep-23

Table with columns: Time, Total Motorised Vehicles, Cycles, Motor Cycles, Number Vehicle Classes (Car, LGV, 2 Axle Rigid, 3 Axle Rigid, 4 Axle Rigid, 3 Axle Artic, 4 Axle Artic, 5+ Axle Artic, Buses), Percentage Vehicle classes, and Vehicle Speed (MPH 0-95, P-Tile 85%, Average Speed, Standard deviation). Rows list time intervals from 0015 to 2400.

Site Number 23388-6
Description Darlington Street, South of Sydney Mews
Direction Southbound

01-Oct-23

Table with columns: Time, Total Motorised Vehicles, Cycles, Motor Cycles, Number Vehicle Classes DFT 2010 + COBA Scheme (Car, LGV, 2 Axle Rigid, 3 Axle Rigid, 4 Axle Rigid, 3 Axle Artic, 4 Axle Artic, 5+ Axle Artic, Buses), Percentage Vehicle classes DFT 2010 + COBA Scheme (Cycles, Motor Cycles, Cars, LGV, 2 Axle Rigid, 3 Axle Rigid, 4 Axle Rigid, 3 Axle Artic, 4 Axle Artic, 5+ Axle Artic, Buses), Vehicle Speed (MPH 0-95), P-Tile 85%, Average Speed, Standard deviation.

Site Number 23388-6
 Description Darlington Street, South of Sydney Mews
 Direction Southbound

Grand Total

Time	Total Motorised Vehicles	Totals	Cycles	Motor Cycles	Number Vehicle Classes DFT 2010 + COBA Scheme										Percentage Vehicle classes DFT 2010 + COBA Scheme										Vehicle Speed													P-Tile 85%	Average Speed	Standard deviation							
					Car	LGV	2 Axle Rigid	3 Axle Rigid	4 Axle Rigid	3 Axle Artic.	4 Axle Artic.	5+ Axle Artic.	Buses	Cycles	Motor Cycles	Cars	LGV	2 Axle Rigid	3 Axle Rigid	4 Axle Rigid	3 Axle Artic.	4 Axle Artic.	5+ Axle Artic.	Buses	MPH 0 <5mph	MPH 5 <10mph	MPH 10 <15mph	MPH 15 <20mph	MPH 20 <25mph	MPH 25 <30mph	MPH 30 <35mph	MPH 35 <40mph	MPH 40 <45mph	MPH 45 <50mph	MPH 50 <55mph	MPH 55 <60mph	MPH 60 <65mph				MPH 65 <70mph	MPH 70 <75mph	MPH 75 <80mph	MPH 80 <85mph	MPH 85 <90mph	MPH 90 <95mph	MPH 95 <100mph
--	60524	60841	317	791	51235	6284	1322	139	58	159	18	226	292	0.521	1.3	84.21	10.33	2.173	0.228	0.095	0.261	0.03	0.371	0.48	448	3688	6266	17930	25845	5904	627	81	24	10	1	5	1	1	1	7	0	0	0	2	24.3	19.6	5.3

