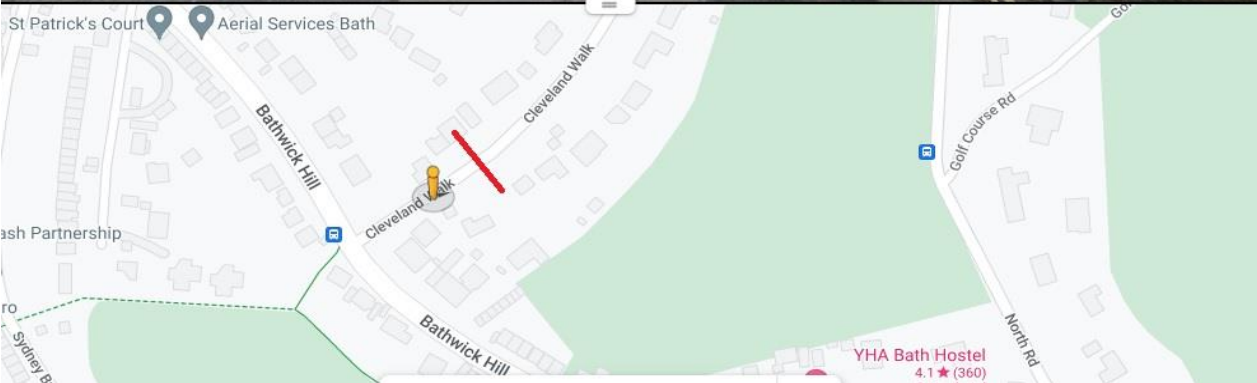
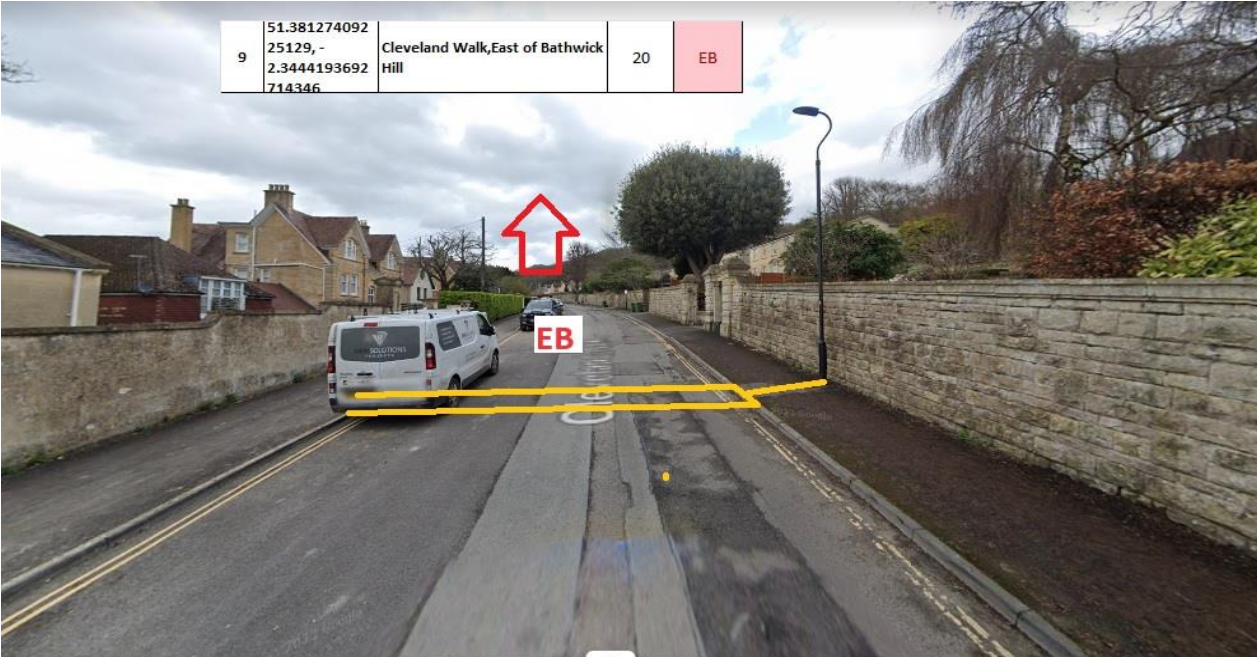


Site Number 23388-9
Description Cleveland Walk, East of Bathwick Hill
Direction Westbound

Location

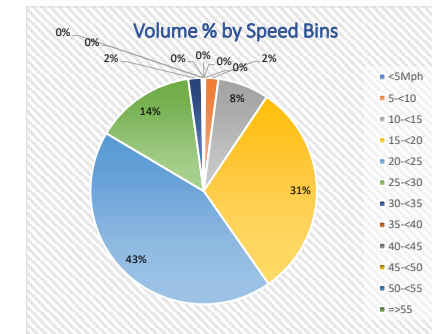
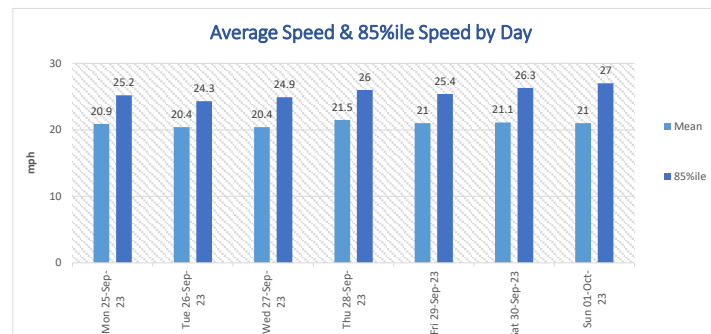
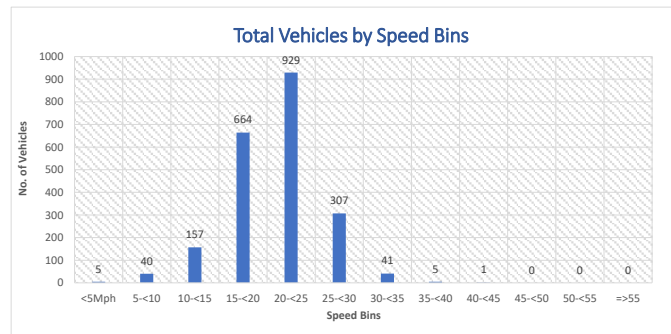


Observations

Site Number 23388-9
 Description Cleveland Walk, East of Bathwick Hill
 Direction Westbound
 Posted Speed Limit(mph) 20mph

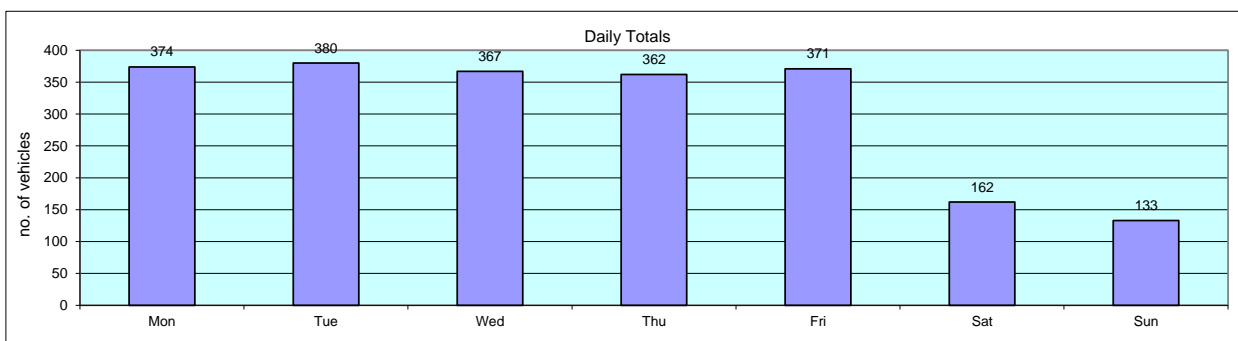
Start Date	End Date	Total Vehicles	5 Day Ave.	7 Day Ave.	Average 85%ile Speed	Average Mean Speed	Standard Dev.
Mon 25-Sep-23	Sun 01-Oct-23	2149	371	307	25.3	20.9	4.7

Time Period	Total Vehicles	85%ile Speed	Mean Speed	Stand Dev.	<5Mph	5-<10	10-<15	15-<20	20-<25	25-<30	30-<35	35-<40	40-<45	45-<50	50-<55	=>55
Mon 25-Sep-23	374	25.2	20.9	4.7	1	7	31	103	170	56	5	1	0	0	0	0
Tue 26-Sep-23	380	24.3	20.4	4.6	3	6	26	132	172	33	7	1	0	0	0	0
Wed 27-Sep-23	367	24.9	20.4	4.6	0	8	30	132	143	46	7	1	0	0	0	0
Thu 28-Sep-23	362	26	21.5	4.5	0	6	19	100	163	68	6	0	0	0	0	0
Fri 29-Sep-23	371	25.4	21	4.4	0	4	25	115	166	53	7	1	0	0	0	0
Sat 30-Sep-23	162	26.3	21.1	5.6	1	4	15	43	66	26	6	0	1	0	0	0
Sun 01-Oct-23	133	27	21	5.3	0	5	11	39	49	25	3	1	0	0	0	0
Total Vehicles																
[--]	2149	25.3	20.9	4.7	5	40	157	664	929	307	41	5	1	0	0	0



Site Number 23388-9
 Description Cleveland Walk, East of Bathwick Hill
 Direction Westbound

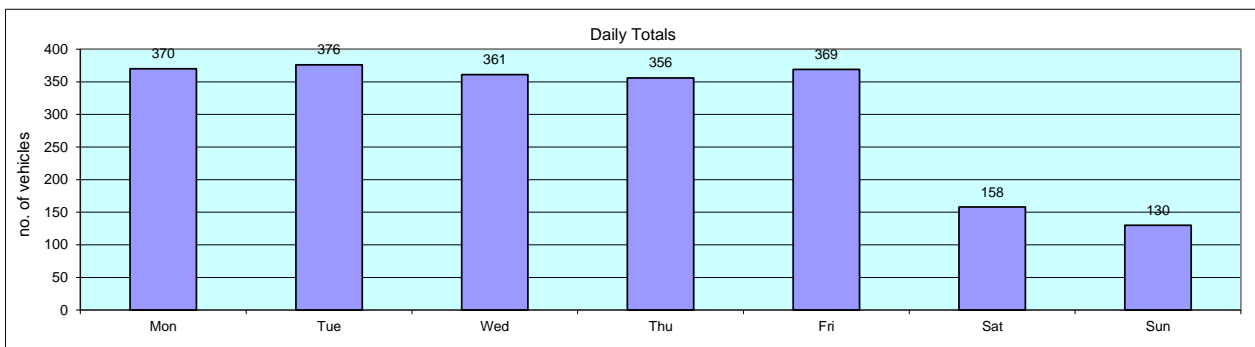
Time	Mon 25-Sep-23	Tue 26-Sep-23	Wed 27-Sep-23	Thu 28-Sep-23	Fri 29-Sep-23	Sat 30-Sep-23	Sun 01-Oct-23	Weekday Av.	7day Av.
0100	0	0	0	0	0	0	0	0	0
0200	0	0	0	0	0	0	0	0	0
0300	0	0	0	0	0	0	0	0	0
0400	0	0	0	0	0	0	0	0	0
0500	1	0	0	0	0	0	0	0	0
0600	1	0	0	0	0	0	0	0	0
0700	3	0	0	0	1	1	0	1	1
0800	12	0	0	1	0	0	0	3	2
0900	80	0	1	1	0	0	0	16	12
1000	21	1	0	1	0	0	0	5	3
1100	26	1	1	0	0	0	1	6	4
1200	20	0	1	1	0	0	0	4	3
1300	13	0	1	0	0	0	0	3	2
1400	26	0	0	0	1	1	1	5	4
1500	14	0	0	0	0	1	0	3	2
1600	23	0	0	1	0	0	0	5	3
1700	59	1	0	1	0	0	0	12	9
1800	37	0	0	0	0	0	0	7	5
1900	11	0	1	0	0	0	0	2	2
2000	8	1	0	0	0	1	1	2	2
2100	12	0	1	0	0	0	0	3	2
2200	4	0	0	0	0	0	0	1	1
2300	2	0	0	0	0	0	0	0	0
2400	1	0	0	0	0	0	0	0	0
08-09	80	0	1	1	0	0	0	16	12
17-18	37	35	35	36	32	15	17	35	30
07-19	342	357	346	343	347	137	116	347	284
07-23	368	376	362	357	366	157	130	366	302
00-24	374	380	367	362	371	162	133	371	307



Site Number 23388-9
 Description Cleveland Walk, East of Bathwick Hill
 Direction Westbound

Volumetric Summary - Motorised Vehicles

Time	Mon 25-Sep-23	Tue 26-Sep-23	Wed 27-Sep-23	Thu 28-Sep-23	Fri 29-Sep-23	Sat 30-Sep-23	Sun 01-Oct-23	Weekday Av.	7day Av.
0100	0	0	0	0	0	1	2	0	0
0200	0	0	0	0	0	0	0	0	0
0300	0	0	0	0	0	0	0	0	0
0400	0	0	0	0	0	0	0	0	0
0500	1	0	0	1	0	0	0	0	0
0600	1	2	1	2	1	0	0	1	1
0700	2	2	3	1	1	1	1	2	2
0800	12	7	10	10	10	1	0	10	7
0900	80	94	84	79	88	6	3	85	62
1000	21	21	14	13	25	11	8	19	16
1100	26	18	10	20	18	6	5	18	15
1200	20	15	21	22	16	17	15	19	18
1300	13	14	18	27	14	12	15	17	16
1400	26	16	23	15	10	14	9	18	16
1500	13	24	13	21	20	12	12	18	16
1600	22	18	27	19	14	11	11	20	17
1700	58	80	75	63	76	19	11	70	55
1800	37	35	35	36	32	15	17	35	30
1900	11	12	11	12	23	11	8	14	13
2000	8	8	11	8	10	7	5	9	8
2100	12	5	2	2	5	6	3	5	5
2200	4	5	1	2	2	3	2	3	3
2300	2	0	1	2	2	3	3	1	2
2400	1	0	1	1	2	2	0	1	1
08-09	80	94	84	79	88	6	3	85	62
17-18	37	35	35	36	32	15	17	35	30
07-19	339	354	341	337	346	135	114	343	281
07-23	365	372	356	351	365	154	127	362	299
00-24	370	376	361	356	369	158	130	366	303



Site Number 23388-9
Description Cleveland Walk, East of Bathwick Hill
Direction Westbound

25-Sep-23

Table with columns: Time, Total Motorised Vehicles, Cycles, Motor Cycles, Number Vehicle Classes (Car, LGV, 2 Axle Rigid, 3 Axle Rigid, 4 Axle Rigid, 3 Axle Artic, 4 Axle Artic, 5+ Axle Artic, Buses), Percentage Vehicle classes, Vehicle Speed (MPH 0-95), P-Tile 85%, Average Speed, Standard deviation.

Site Number 23388-9
Description Cleveland Walk, East of Bathwick Hill
Direction Westbound

26-Sep-23

Table with columns: Time, Total Motorised Vehicles, Cycles, Motor Cycles, Number Vehicle Classes (Car, LGV, 2 Axle Rigid, 3 Axle Rigid, 4 Axle Rigid, 3 Axle Artic., 4 Axle Artic., 5+ Axle Artic., Buses), Percentage Vehicle classes (Cycles, Motor Cycles, Cars, LGV, 2 Axle Rigid, 3 Axle Rigid, 4 Axle Rigid, 3 Axle Artic., 4 Axle Artic., 5+ Axle Artic., Buses), Vehicle Speed (MPH 0-95), P-Tile 85%, Average Speed, Standard deviation.

Site Number 23388-9
Description Cleveland Walk, East of Bathwick Hill
Direction Westbound

27-Sep-23

Table with columns: Time, Total Motorised Vehicles, Totals, Cycles, Motor Cycles, Number Vehicle Classes (Car, LGV, 2 Axle Rigid, 3 Axle Rigid, 4 Axle Rigid, 3 Axle Artic, 4 Axle Artic, 5+ Axle Artic, Buses), Percentage Vehicle classes (Cycles, Motor Cycles, Cars, LGV, 2 Axle Rigid, 3 Axle Rigid, 4 Axle Rigid, 3 Axle Artic, 4 Axle Artic, 5+ Axle Artic, Buses), Vehicle Speed (MPH 0-95), P-Tile 85%, Average Speed, Standard deviation.

Site Number 23388-9
Description Cleveland Walk, East of Bathwick Hill
Direction Westbound

28-Sep-23

Table with columns: Time, Total Motorised Vehicles, Totals, Cycles, Motor Cycles, Number Vehicle Classes DFT 2010 + COBA Scheme (Car, LGV, 2 Axle Rigid, 3 Axle Rigid, 4 Axle Rigid, 3 Axle Artic., 4 Axle Artic., 5+ Axle Artic., Buses), Percentage Vehicle classes DFT 2010 + COBA Scheme (Cycles, Motor Cycles, Cars, LGV, 2 Axle Rigid, 3 Axle Rigid, 4 Axle Rigid, 3 Axle Artic., 4 Axle Artic., 5+ Axle Artic., Buses), Vehicle Speed (MPH 0 to 95), P-Tile 85%, Average Speed, Standard deviation.

Site Number 23388-9
Description Cleveland Walk, East of Bathwick Hill
Direction Westbound

29-Sep-23

Table with columns: Time, Total Motorised Vehicles, Totals, Cycles, Motor Cycles, Number Vehicle Classes (Car, LGV, 2 Axle Rigid, 3 Axle Rigid, 4 Axle Rigid, 3 Axle Artic, 4 Axle Artic, 5+ Axle Artic, Buses), Percentage Vehicle classes, and Vehicle Speed (MPH 0-95). Rows include individual time intervals and summary rows for 08-09, 17-18, 07-19, 07-23, and 00-24.

Site Number 23388-9
Description Cleveland Walk, East of Bathwick Hill
Direction Westbound

30-Sep-23

Table with columns: Time, Total Motorised Vehicles, Totals, Cycles, Motor Cycles, Number Vehicle Classes (Car, LGV, 2 Axle Rigid, 3 Axle Rigid, 4 Axle Rigid, 3 Axle Artic, 4 Axle Artic, 5+ Axle Artic, Buses), Percentage Vehicle classes (Cycles, Motor Cycles, Cars, LGV, 2 Axle Rigid, 3 Axle Rigid, 4 Axle Rigid, 3 Axle Artic, 4 Axle Artic, 5+ Axle Artic, Buses), Vehicle Speed (MPH 0-95), P-Tile 85%, Average Speed, Standard deviation.

Site Number 23388-9
Description Cleveland Walk, East of Bathwick Hill
Direction Westbound

01-Oct-23

Table with columns: Time, Total Motorised Vehicles, Totals, Cycles, Motor Cycles, Number Vehicle Classes (Car, LGV, 2 Axle Rigid, 3 Axle Rigid, 4 Axle Rigid, 3 Axle Artic, 4 Axle Artic, 5+ Axle Artic, Buses), Percentage Vehicle classes (Cycles, Motor Cycles, Cars, LGV, 2 Axle Rigid, 3 Axle Rigid, 4 Axle Rigid, 3 Axle Artic, 4 Axle Artic, 5+ Axle Artic, Buses), Vehicle Speed (MPH 0-95), P-Tile 85%, Average Speed, Standard deviation.

Site Number 23388-9
 Description Cleveland Walk,East of Bathwick Hill
 Direction Westbound

Grand Total

Time	Total Motorised Vehicles	Totals	Cycles	Motor Cycles	Number Vehicle Classes DFT 2010 + COBA Scheme										Percentage Vehicle classes DFT 2010 + COBA Scheme										Vehicle Speed													P-Tile 85%	Average Speed	Standard deviation													
					Car	LGV	2 Axle Rigid	3 Axle Rigid	4 Axle Rigid	3 Axle Artic.	4 Axle Artic.	5+ Axle Artic.	Buses	Cycles	Motor Cycles	Cars	LGV	2 Axle Rigid	3 Axle Rigid	4 Axle Rigid	3 Axle Artic.	4 Axle Artic.	5+ Axle Artic.	Buses	MPH 0 <5mph	MPH 5 <10mph	MPH 10 <15mph	MPH 15 <20mph	MPH 20 <25mph	MPH 25 <30mph	MPH 30 <35mph	MPH 35 <40mph	MPH 40 <45mph	MPH 45 <50mph	MPH 50 <55mph	MPH 55 <60mph	MPH 60 <65mph				MPH 65 <70mph	MPH 70 <75mph	MPH 75 <80mph	MPH 80 <85mph	MPH 85 <90mph	MPH 90 <95mph	MPH 95 <100mph						
--	2120	2149	29	18	1739	293	64	0	1	4	0	0	1	1.349	0.838	80.92	13.63	2.978	0	0.047	0.186	0	0	0.047	5	40	157	664	929	307	41	5	1	0	0	0	0	0	0	0	0	0	0	0	0	0	0	0	0	0	25.3	20.9	4.7

Site Number 23388-9
Description Cleveland Walk, East of Bathwick Hill
Direction Westbound

Grand Total

Table with columns for Time, Motorised Vehicles, Cycles, Motor Cycles, Car, LGV, Vehicle Classes (2 Axle Rigid, 3 Axle Rigid, 4 Axle Rigid, 3 Axle Artic., 4 Axle Artic., 5+ Axle Artic., Buses), Percentage Vehicle classes, and Vehicle Speed (MPH 0-95). Rows include individual time intervals from 0015 to 2400 and summary rows for 08-09, 17-18, 07-19, 07-23, and 00-24.