

Preliminary Landscape and Visual Appraisal Figures

Kingswood School

Client: Kingswood School
Document no.: NPA 11203 101
Rev no.: PP01
Status: Pre-planning
Print Size: A3
Date: 30/03/2021

NICHOLAS PEARSON ASSOCIATES

ENVIRONMENTAL DESIGN | LANDSCAPE ARCHITECTURE | ECOLOGY | VISUALISATION

List of Figures

Figure 01: Landscape and Heritage Designations

Figure 02: Landscape Character Areas (AONB and Bath City-Wide)

Figure 03: Landscape Character Areas (Rural Landscapes of B&NES)

Figure 04: Viewpoint location plan

Figure 05: VP1 Lansdown Road, adjacent to SE corner of Site

Figure 06: VP2 Lansdown Cemetery, looking north-west

Figure 07: VP3a Lansdown Road, cemetery gate, looking north-west

Figure 08: VP3b Lansdown Road, cemetery gate, looking north

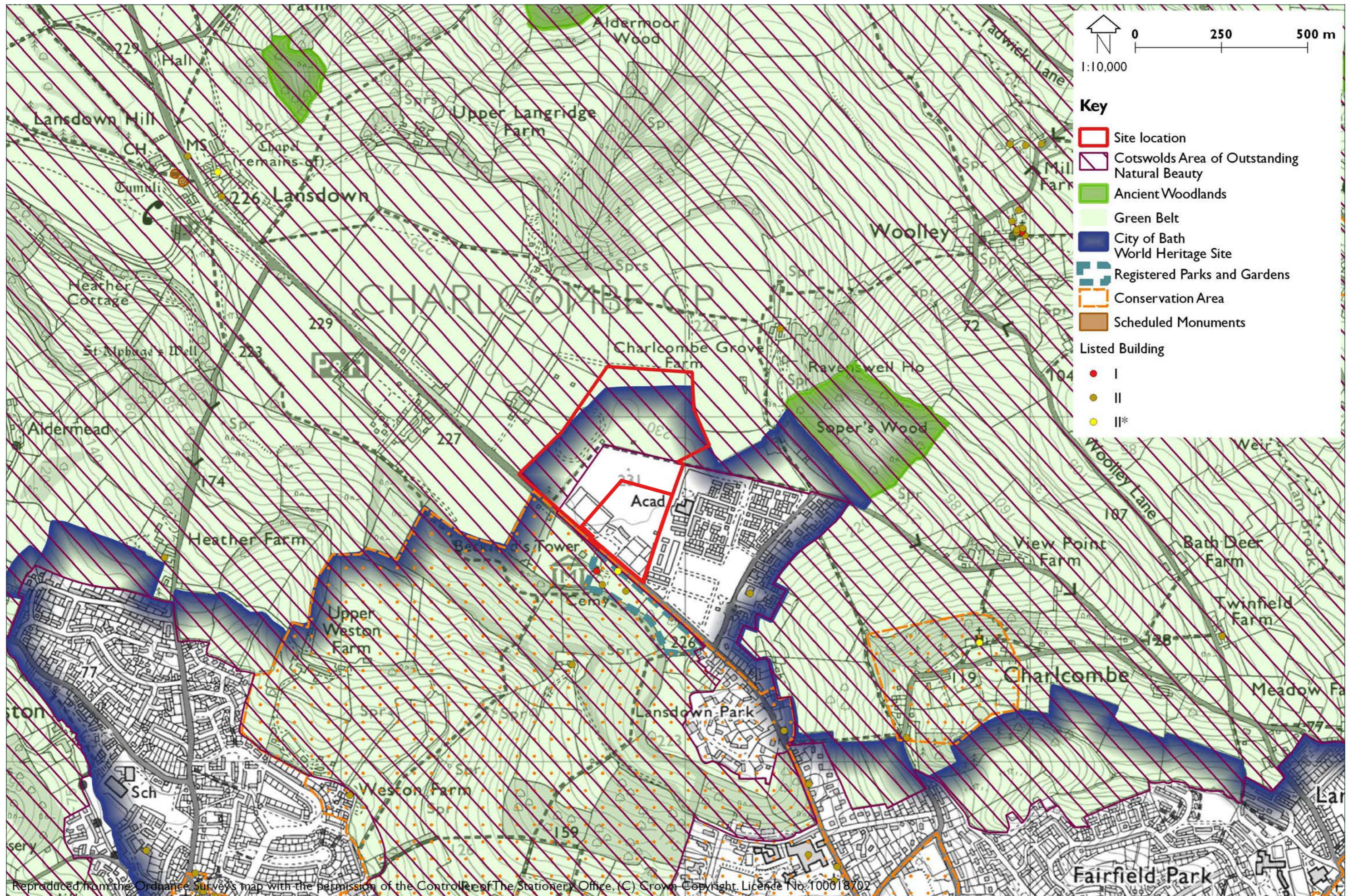
Figure 09: VP3c Lansdown Road, cemetery gate, looking north-east

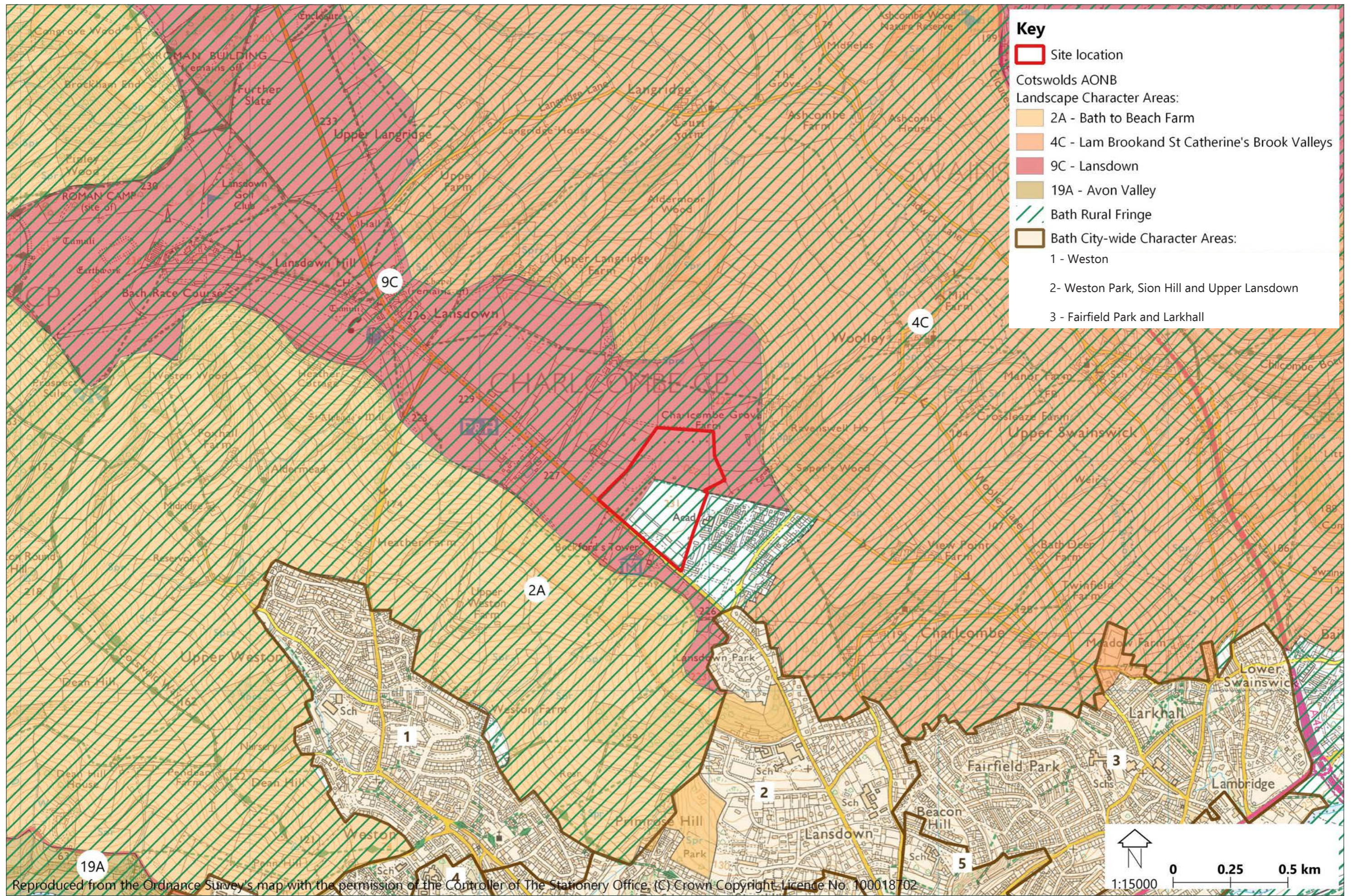
Figure 10: VP4 Public right of way through Site, looking south-east

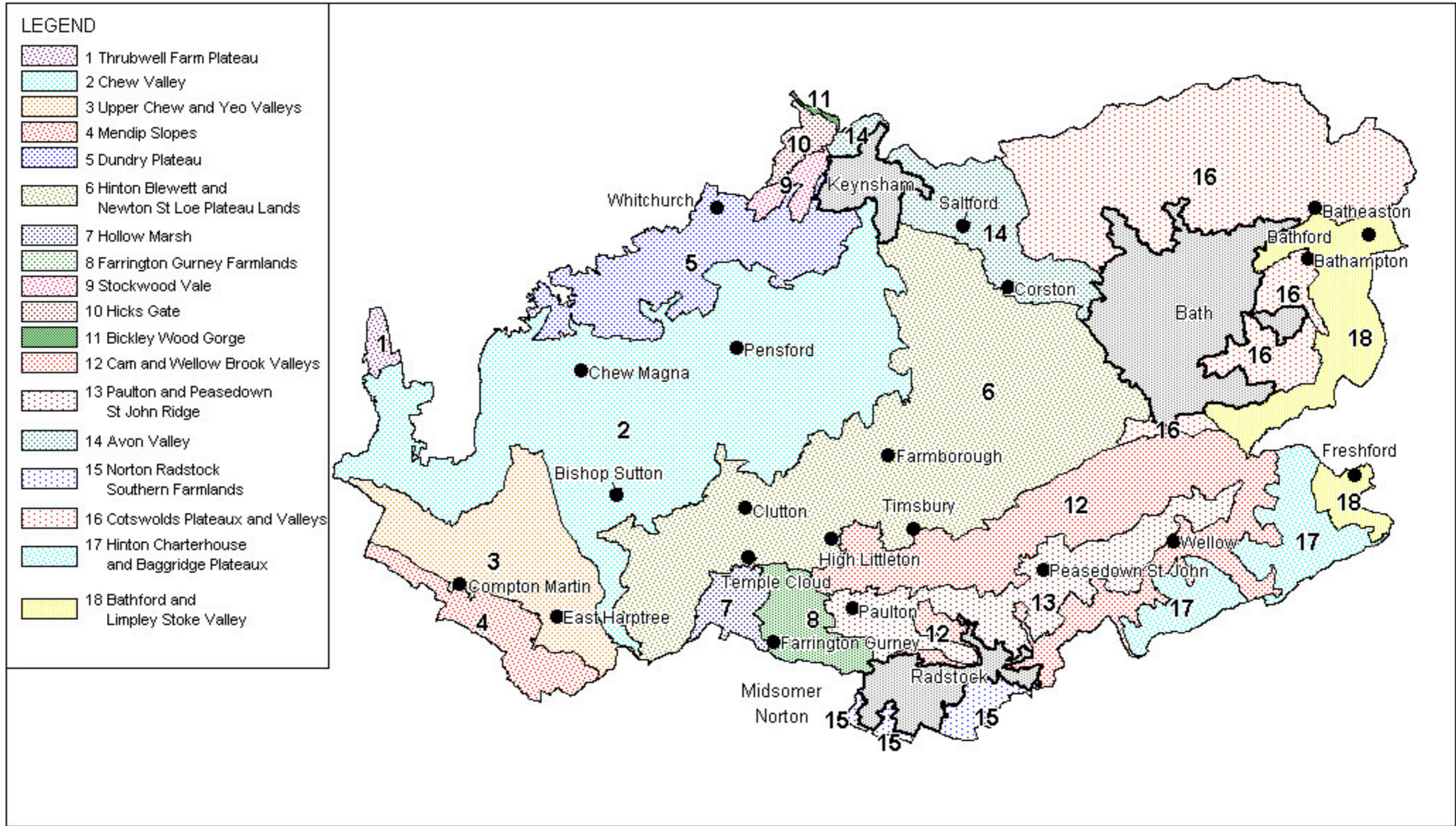
Figure 11: VP5 PROW west of Charlcombe Grove Farm

Figure 12: VP6 PROW south of Upper Landridge Farm

Figure 13: VP7 Cotswold Way near Sir Bevil Grenville's Monument

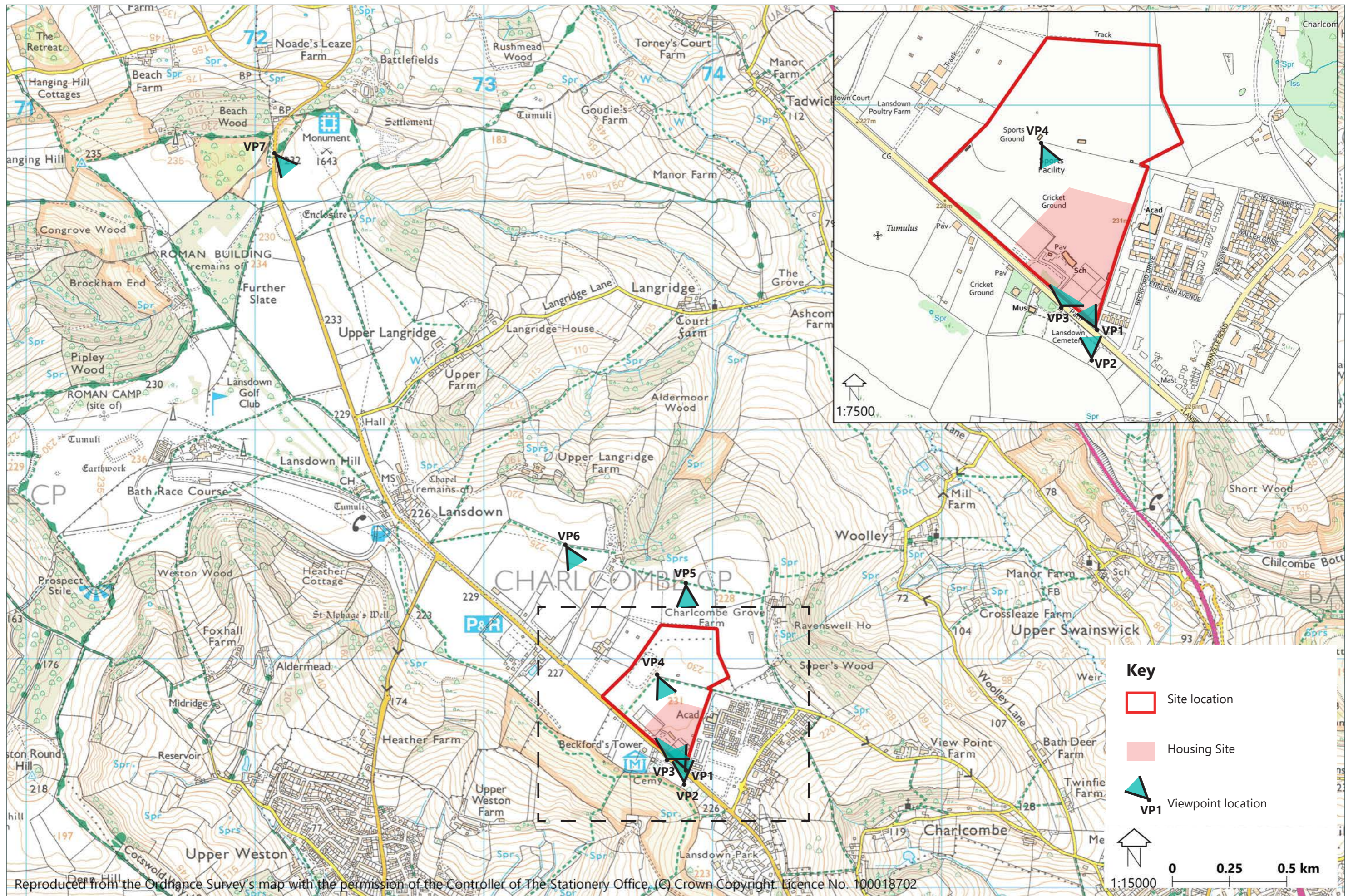






Map 4: Landscape Character Areas

Plan reproduced from:
 B&NES (2003) 'Rural Landscapes of Bath and North East Somerset: A Landscape Character Assessment' [online] Available at: <https://beta.bathnes.gov.uk/policy-and-documents-library/rural-landscapes-character-assessment> (Accessed 04.03.2021)



Project: Kingswood School
Client: Kingswood School
Date: March 2021

Figure Title: Figure 04: Viewpoint location plan
Project No.: NPA 11203
Page Size: A3

Status: Pre-planning



Approximate extent of Housing Site

10cm
(Original image size 390 x 260mm)
0cm

Please note: To view this image digitally, calibrate this scale bar, on screen, for a correct scale representation and view the image at a comfortable arm's length



Approximate extent of
Housing Site (beyond trees)

10cm
(Original image size 390 x 260mm)
0cm

Please note: To view this image digitally, calibrate this scale bar, on screen, for a correct scale representation and view the image at a comfortable arm's length









10cm
(Original image size 390 x 260mm)
0cm

Please note: To view this image digitally, calibrate this scale bar, on screen, for a correct scale representation and view the image at a comfortable arm's length

NICHOLAS PEARSON ASSOCIATES

ENVIRONMENTAL DESIGN | LANDSCAPE ARCHITECTURE | ECOLOGY | VISUALISATION

npaconsult.co.uk npavisuals.co.uk +44 (0)1225 876990

Project: Kingswood School
Client: Kingswood School
Date: March 2021

Page Size: A3

Figure Title: Figure 10: VP4 Public right of way through Site, looking south-east
Project No.: NPA 11203
Visualisation Type: Type 1
Status: DRAFT
Image Enlargement: 100%



Approximate extent of
Housing Site

10cm
(Original image size 390 x 260mm)
0cm

Please note: To view this image digitally, calibrate this scale bar, on screen, for a correct scale representation and view the image at a comfortable arm's length



Approximate extent of
Housing Site

10cm
(Original image size 390 x 260mm)
0cm

Please note: To view this image digitally, calibrate this scale bar, on screen, for a correct scale representation and view the image at a comfortable arm's length



Approximate extent of
Housing Site

10cm
0cm
(Original image size 390 x 260mm)

Please note: To view this image digitally, calibrate this scale bar, on screen, for a correct scale representation and view the image at a comfortable arm's length

NICHOLAS PEARSON ASSOCIATES

ENVIRONMENTAL DESIGN | LANDSCAPE ARCHITECTURE | ECOLOGY | VISUALISATION

npaconsult.co.uk npavisuals.co.uk +44 (0)1225 876990 The Farm House, Church Farm Business Park, Corston, Bath BA2 9AP

IEMA Transforming the world
to sustainability



Company Reg. No. 02715105
VAT Reg. No. 595 1148 22