

The River Regeneration Trust

Hand-out for B&NES Planning Meeting

Broadmead Peninsula Economic Regeneration and Land Improvement Scheme Options A, B & C (2013-2029)

21st October 2013

Draft for Discussion

Produced for:

Bath & North East Somerset Council

**Bath & North East
Somerset Council**

Prepared by:

The River Regeneration Trust
c/o Geoff Dunford
Chairman

T 07976 913786

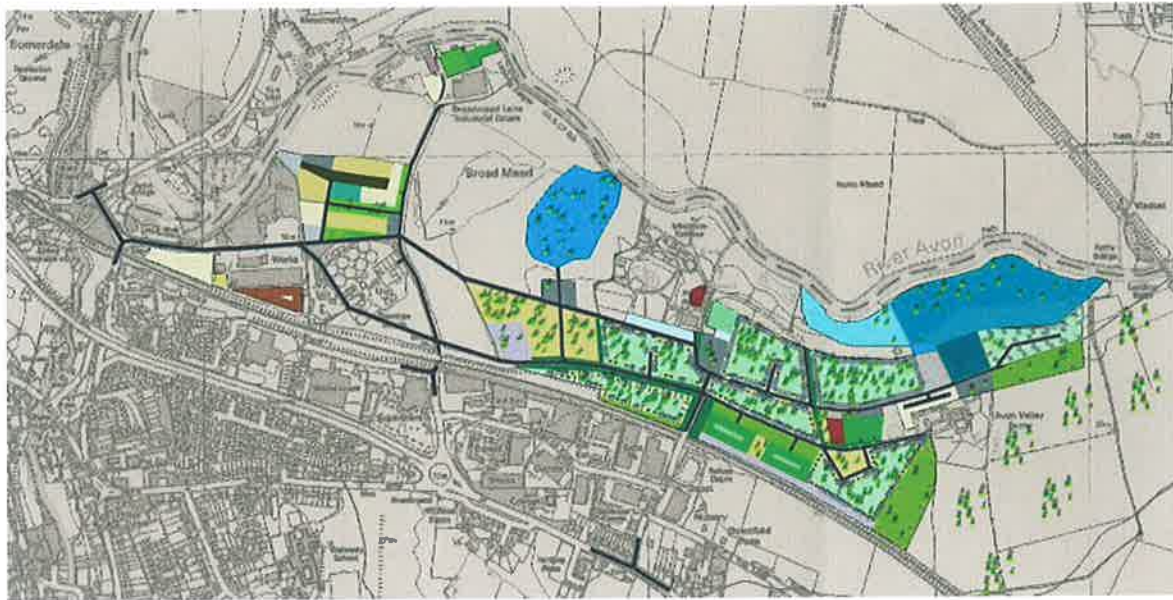
Disclaimer:

The contents of this document are the views of The River Regeneration Trust and not necessarily the Council. Whilst information contained in this document has been prepared in good faith, it does not purport to be comprehensive nor to have been independently verified. Where this document is provided as part of a project proposal, none of The River Regeneration Trust nor any of its representatives or advisers accept any responsibility or liability (other than in respect of fraudulent misrepresentation) in relation to its adequacy, accuracy or completeness, nor do they make any representation or warranty, express or implied, with respect to the information contained in this document.

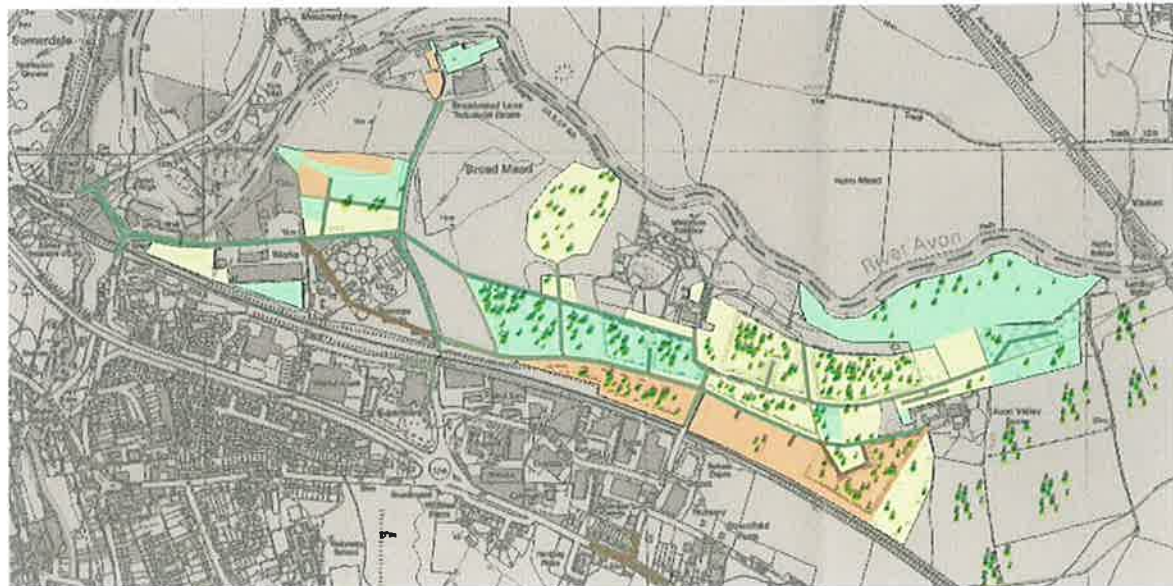
Any liability (other than in respect of fraudulent misrepresentation) on the part of The River Regeneration Trust in respect of this document is hereby expressly disclaimed.

Broadmead Peninsula Option A

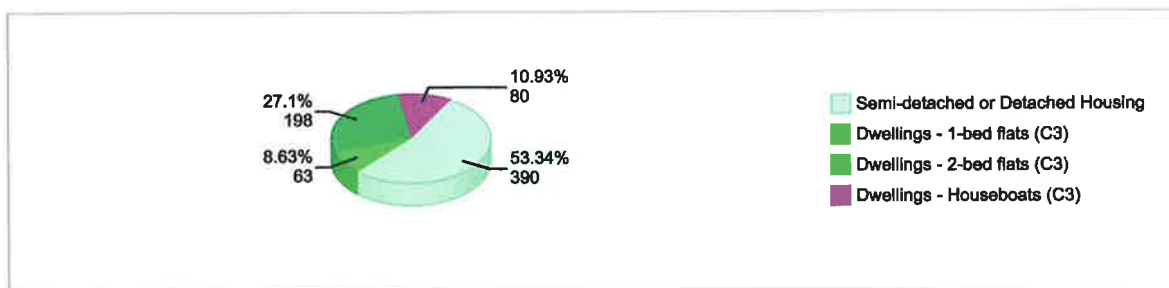
Initial Plan



Phases – Phase 1 yellow, Phase 2 green, Phase 3 orange

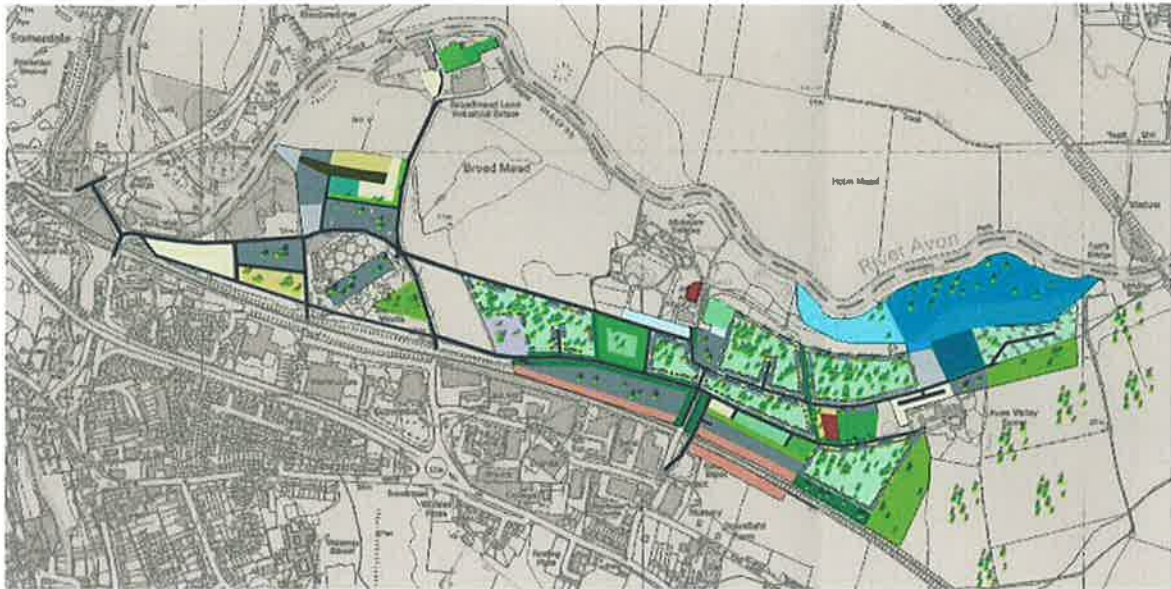


Housing – 731 units

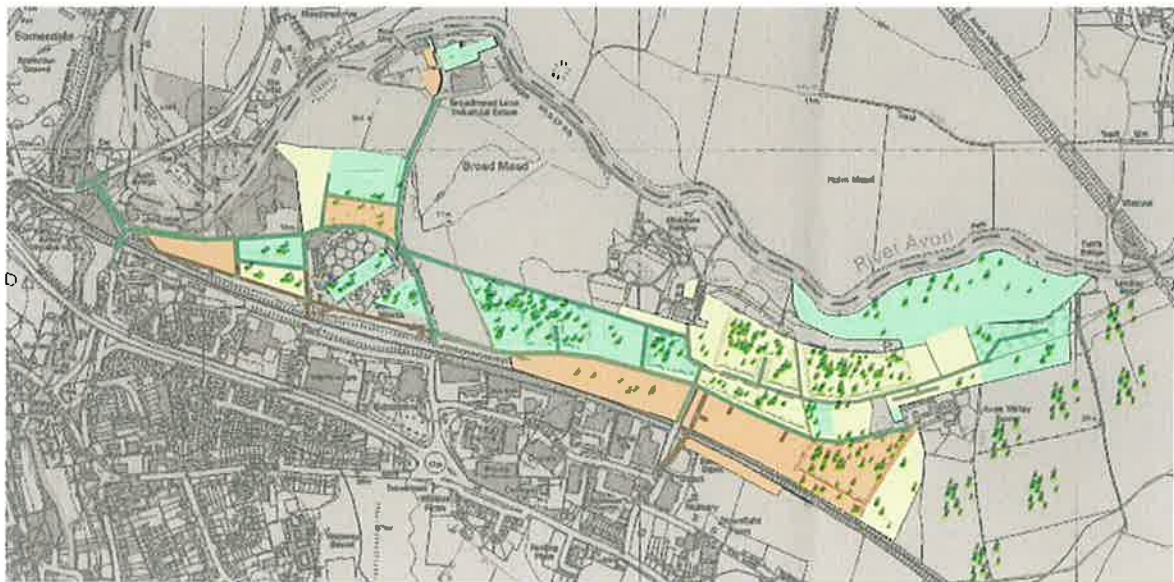


Broadmead Peninsula Option B

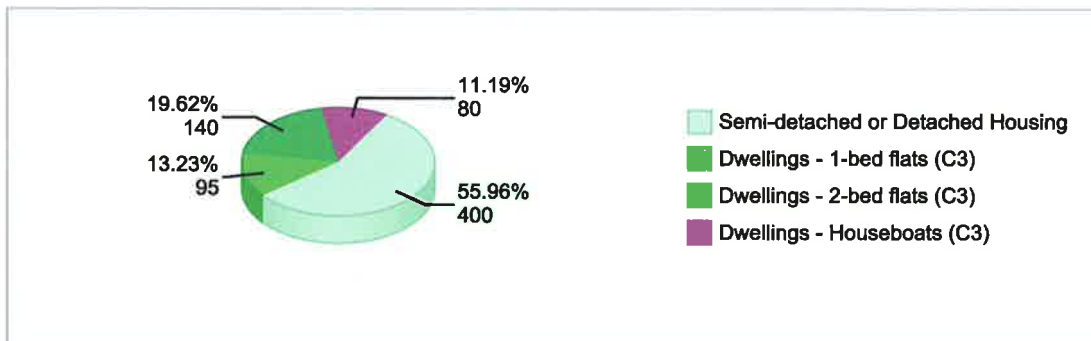
Initial Plan



Phases – Phase 1 yellow, Phase 2 green, Phase 3 orange

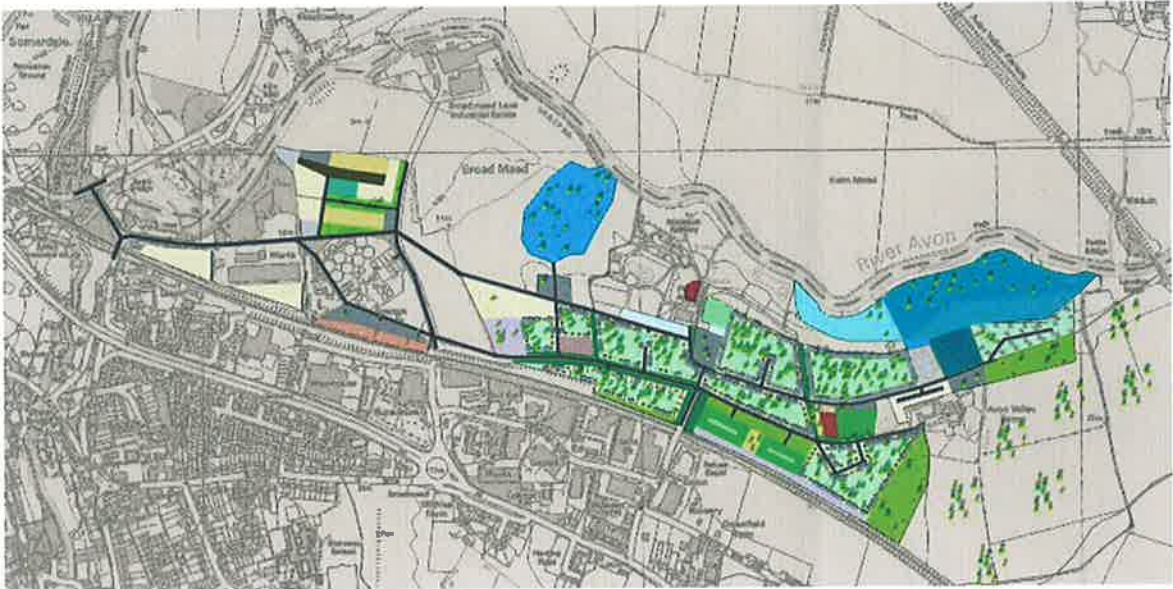


Housing – 714 units

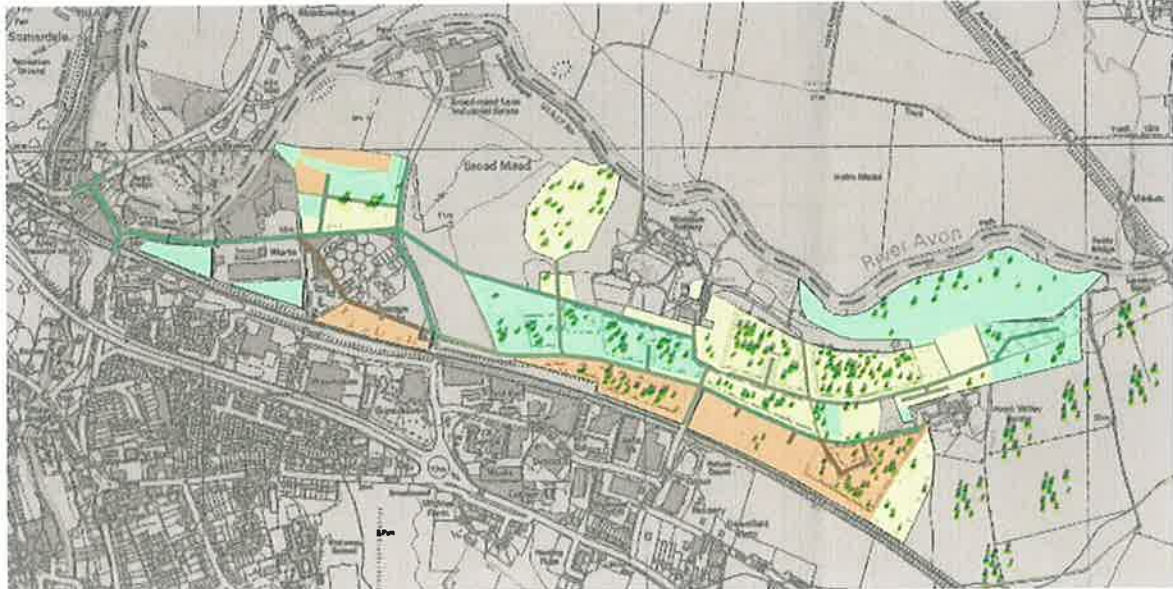


Broadmead Peninsula Option C

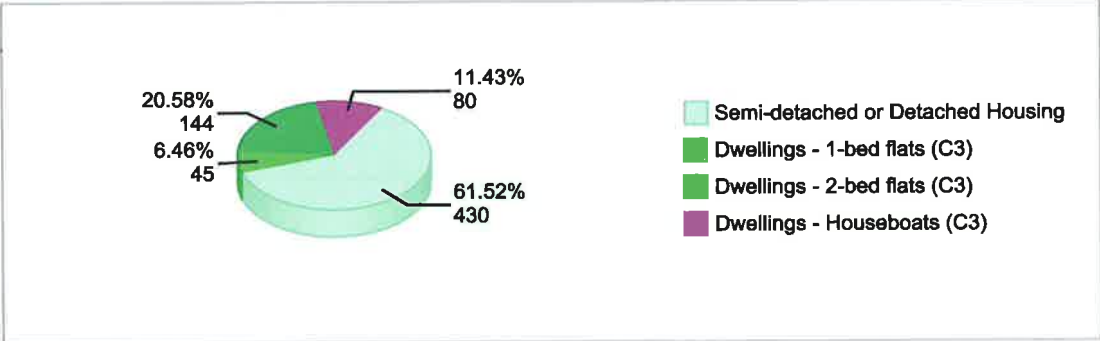
Initial Plan



Phases – Phase 1 yellow, Phase 2 green, Phase 3 orange



Housing – 699 units



Land Use & Employment Summary – Option A

Option A	Gross Floor Area (GFA)			Jobs
	m ²	Hectares	Acres	
Housing (C3)	81,793	8.18	20.21	4
Offices (B1)	52,338	5.23	12.93	189
Insustry (B2 & B8)	27,485	2.75	6.79	312
Shops & Hotels	12,077	1.21	2.98	22
Health & Education	12,687	1.27	3.14	20
Leisure	1,478	0.15	0.37	17
Open Space, Marina & Wetland	214,898	21.49	53.10	8
TOTAL	402,756	40.28	99.52	572

Land Use & Employment Summary – Option B

Option B	Gross Floor Area (GFA)			Jobs
	m ²	Hectares	Acres	
Housing (C3)	78,145	7.81	19.31	4
Offices (B1)	52,735	5.27	13.03	189
Industry (B2 & B8)	17,220	1.72	4.26	312
Shops & Hotels	18,313	1.83	4.53	48
Health & Education	7,993	0.80	1.98	20
Leisure	1,478	0.15	0.37	17
Open Space, Marina & Wetland	151,237	15.12	37.37	8
Rail Station & Sidings	17,857	1.79	4.41	18
Waste Management Facilities	45,499	4.55	11.24	12
TOTAL	390,477	39.05	96.49	628

Land Use & Employment Summary – Option C

Option C	Gross Floor Area (GFA)			Jobs
	m ²	Hectares	Acres	
Housing (C3)	78,478	7.85	19.39	4
Offices (B1)	66,953	6.70	16.54	149
Industry (B2 & B8)	23,544	2.35	5.82	268
Shops & Hotels	12,158	1.22	3.00	22
Health & Education	7,993	0.80	1.98	20
Leisure	2,884	0.29	0.71	17
Open Space, Marina & Wetland	186,124	18.61	45.99	8
Rail Sidings	5,687	0.57	1.41	10
Waste Facilities	5,646	0.56	1.40	8
TOTAL	389,467	38.95	96.24	506