

## 5. Quality

As part of the development of any green space strategy the quality of the provision is extremely important. Whilst the quantity and distribution may have shown that there is enough space within reasonable walking distance for most people, the quality of the experience that those people have will leave a lasting impression and influence their choice of future visits. In this section, quality is defined as the adequacy of the features assessed.

In order to assess the quality of green space provision in the district a methodology was devised using national guidance and deployed in assessing 193 sites. The assessment was carried out by a small number of council officers across formal, natural and allotment provision. The methodology was modified slightly for each type of space to be more reflective of their primary purpose. The table below shows the number of sites audited against the total number of spaces mapped. This gives an indication of the proportion of each type of space that was audited.

Type of Space	Number of Sites Audited	Total Number of Sites	Percentage Audited
Formal	130	220	59.1%
Natural	24	39	61.5%
Allotments	39	39	100.0%
<b>Total</b>	193	298	67.8%

Whilst 100% of allotments were audited, around 60% of formal and natural spaces were examined.

Criteria used across all sites were

- Access & Circulation
- Landscape Quality
- Facilities
- Maintenance
- Management
- Security & Safety
- Natural Heritage
- Cultural Heritage
- Education
- Health
- Responses to People

Appendix B sets out the detailed methodology and analysis of the findings separated by each type of space. Some key findings were

### 5.1 Quality – formal green space provision

Average score (out of 100)	52
Range of scores	38 to 83

When criteria level data is analysed

<b>Criteria</b>	<b>Average Score</b>
Landscape Quality	3.3
Maintenance	3.2
Access & Circulation	3.1
Responses to People	3.1
Security & Safety	3.1
Health	2.9
Facilities	2.8
<b>Average Criteria Score</b>	<b>2.7</b>
Management	2.5
Cultural Heritage	2.4
Natural Heritage	1.9
Education	1.4

The data above shows that generally the overall landscape quality is very good as are standards of maintenance. Weaknesses identified are education and natural heritage.

<b>Hierarchy</b>	<b>Number of Sites</b>	<b>Range</b>	<b>Average</b>
District	2	68 – 83	76
Neighbourhood	24	44 – 71	54
Local	13	47 – 76	54
Parish	42	44 – 65	52
Doorstep	49	38 – 77	48

The information in the table above shows that the district level sites show the highest average quality score and doorstep spaces have the lowest average quality score.

## 5.2 Quality – natural green space provision

Average score (out of 100)	57
Range of scores	40 to 74

When criteria level data is analysed

Criteria	Average Score
Landscape Quality	3.7
Natural Heritage	3.4
Health	3.3
Security & Safety	3.1
Access & Circulation	2.9
Average Criteria Score	2.9
Maintenance	2.9
Responses to People	2.7
Facilities	2.7
Management	2.7
Cultural Heritage	2.2
Education	2.0

The data above shows that the overall landscape quality is generally very good as is natural heritage. Weaknesses identified are education and cultural heritage.

Hierarchy	Number of Sites	Range	Average
District	3	71 – 74	72
Neighbourhood	21	40 – 70	54

As with formal sites, district level sites show a higher average quality score.

## 5.3 Quality – allotment provision

Average score (out of 100)	47
Range of scores	33 to 58

The table below shows the scores by criteria – the key messages here are that safety and security and maintenance are generally the highest scoring areas with natural heritage and management scoring the lowest.

Criteria	Average Score
Security & Safety	3.3
Maintenance	3.1
Landscape Quality	3.0
Cultural Heritage	3.0
Health	2.9
Education	2.9
Access & Circulation	2.7
Average Criteria Score	2.7
Responses to People	2.6
Communal Facilities	2.4
Management	2.3
Natural Heritage	1.8

#### 5.4 Quality by location

This section of the strategy examines the quality scores in the same geographical areas used in the quantity analysis earlier – i.e. district wide, urban settlements and rural parishes.

The sequence of maps for each geographical location shows analysis repeated by each of the 3 types of space. The exception to this is natural green space where this is only analysed at urban settlement level.

As with the quantity maps earlier a traffic light system is used based on the overall average quality score:

- □ Green – sites scoring over 70
- □ Amber – sites scoring 50 to 70
- □ Red – sites scoring below 50

##### **5.4.1 Quality by location – Bath**

Figure 5.1 shows the distribution of formal green spaces that were quality audited.

Figure 5.2 shows the distribution of natural green spaces that were quality audited.

Figure 5.3 shows the distribution of allotments that were quality audited.

#### **5.4.2 Quality by location – Keynsham**

Figure 5.4 shows the distribution of formal green spaces that were quality audited.

Figure 5.5 shows the distribution of natural green spaces that were quality audited.

Figure 5.6 shows the distribution of allotments that were quality audited.

#### **5.4.3 Quality by location – Norton Radstock**

Figure 5.7 shows the distribution of formal green spaces that were quality audited.

Figure 5.8 shows the distribution of natural green spaces that were quality audited.

Figure 5.9 shows the distribution of allotments that were quality audited.

#### **5.4.4 Quality by location – Rural Parishes**

Figure 5.10 shows the distribution of formal green spaces that were quality audited.

Figure 5.11 shows the distribution of allotments that were quality audited.

# Bath & North East Somerset Green Space Strategy

Figure 5.1 Quality of Formal Green Space by Site - Bath City

## LEGEND

### Quality Score

- 70 to 100
- 50 to 70
- 1 to 50
- Sites not assessed

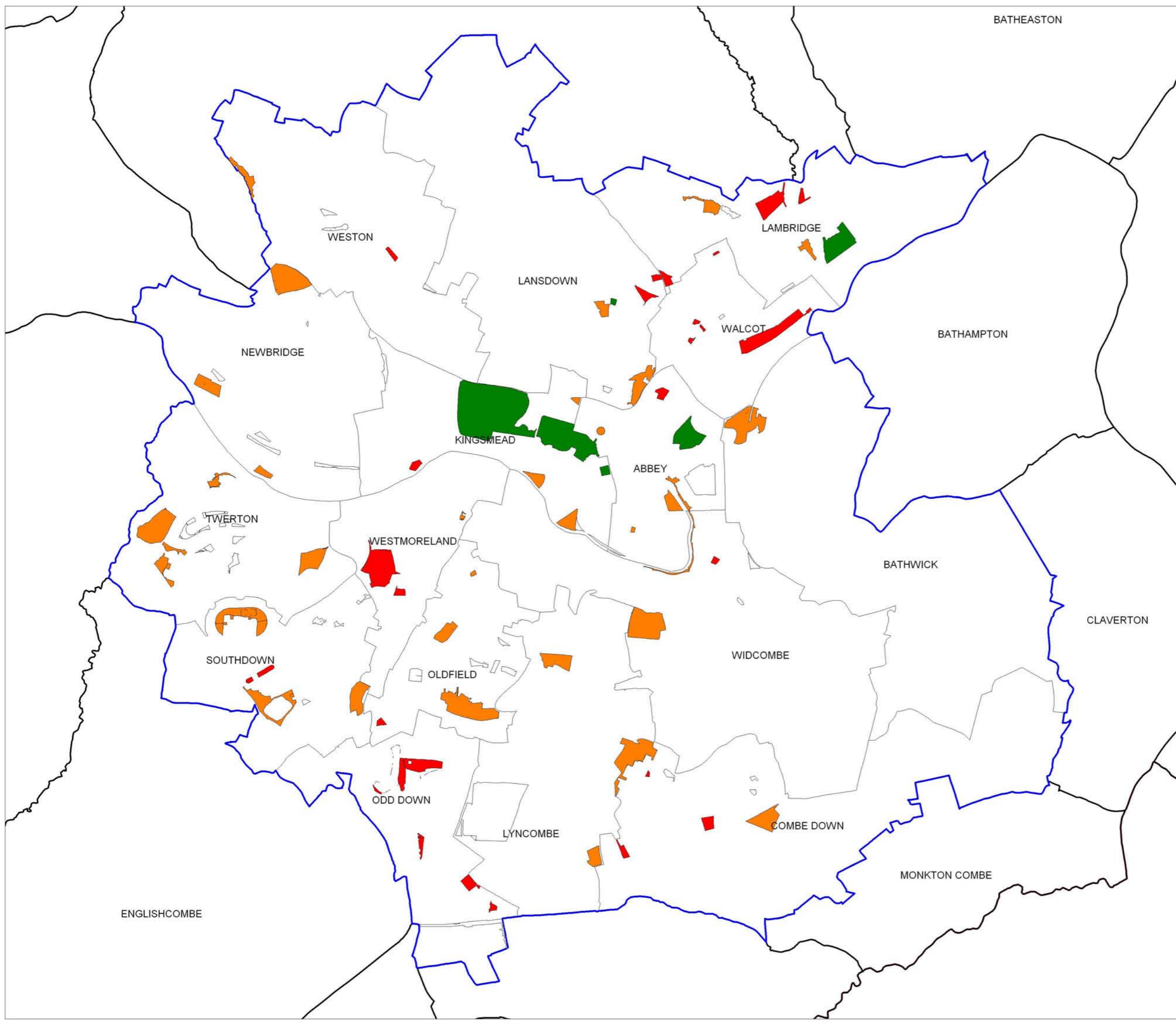
Bath City Boundary

Ward Boundaries

Bath & North East Somerset Local Authority Area

This map is reproduced from Ordnance Survey material with the permission of Ordnance Survey on behalf of the Controller of Her Majesty's Stationery Office. Crown copyright ©. Unauthorised reproduction infringes Crown copyright and may lead to prosecution or civil proceedings. Bath & North East Somerset Council. LA090541. 2006

Drawn by:	Checked by:	Date:
HB	IB	16/11/06



# Bath & North East Somerset Green Space Strategy

Figure 5.2 Quality of Natural Green Space by Site - Bath City

## LEGEND

### Quality Score

- 70 to 100
- 50 to 70
- 1 to 50
- Sites not assessed

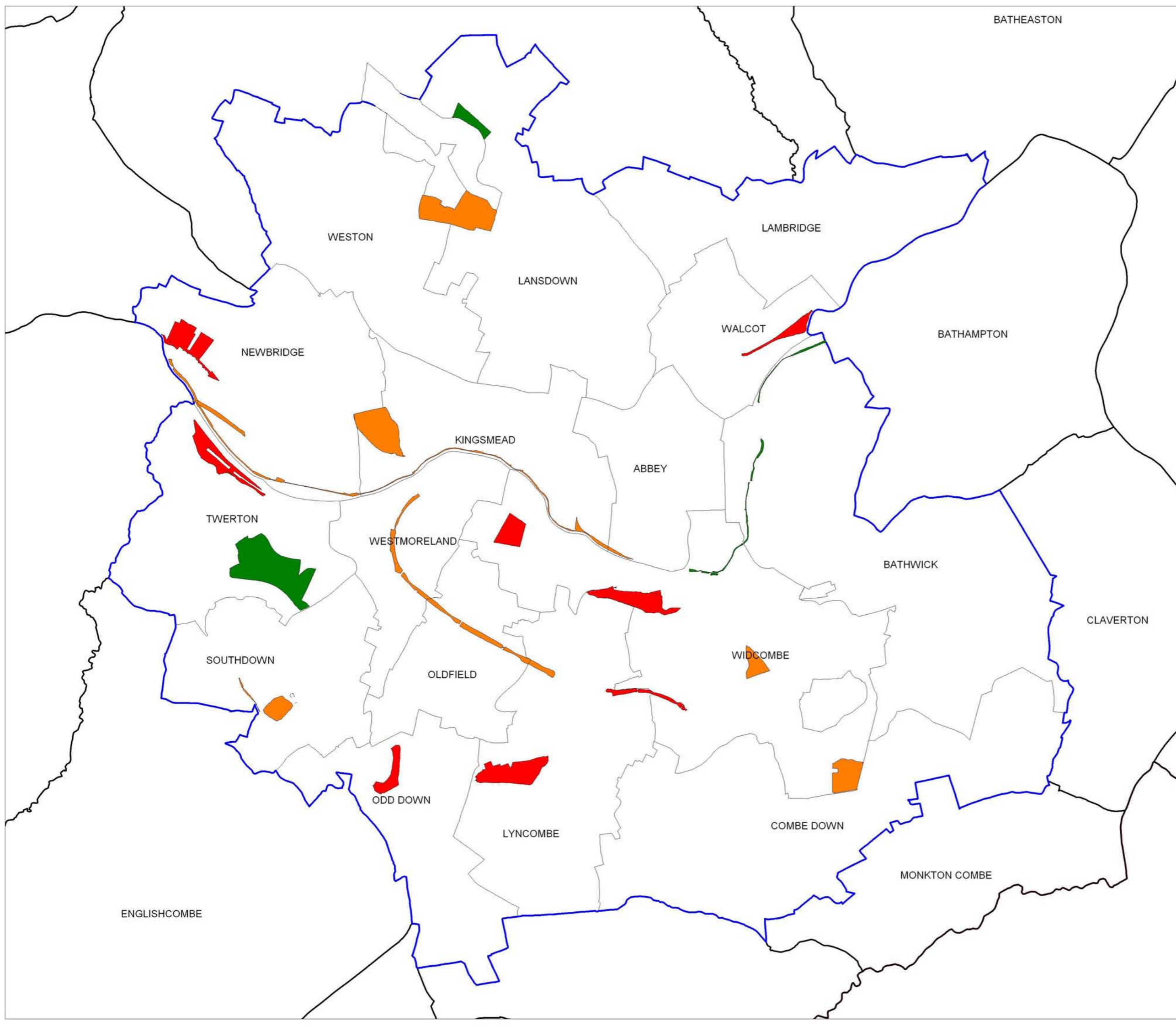
Bath City Boundary

Ward Boundaries

Bath & North East Somerset Local Authority Area

This map is reproduced from Ordnance Survey material with the permission of Ordnance Survey on behalf of the Controller of Her Majesty's Stationery Office. Crown copyright ©. Unauthorised reproduction infringes Crown copyright and may lead to prosecution or civil proceedings. Bath & North East Somerset Council. LA09054I. 2006

Drawn by:	Checked by:	Date:
HB	IB	16/11/06



# Bath & North East Somerset Green Space Strategy

Figure 5.3 Quality of Allotments by Site - Bath City

## LEGEND

### Quality Score

- 70 to 100
- 50 to 70
- 1 to 50
- Sites not assessed

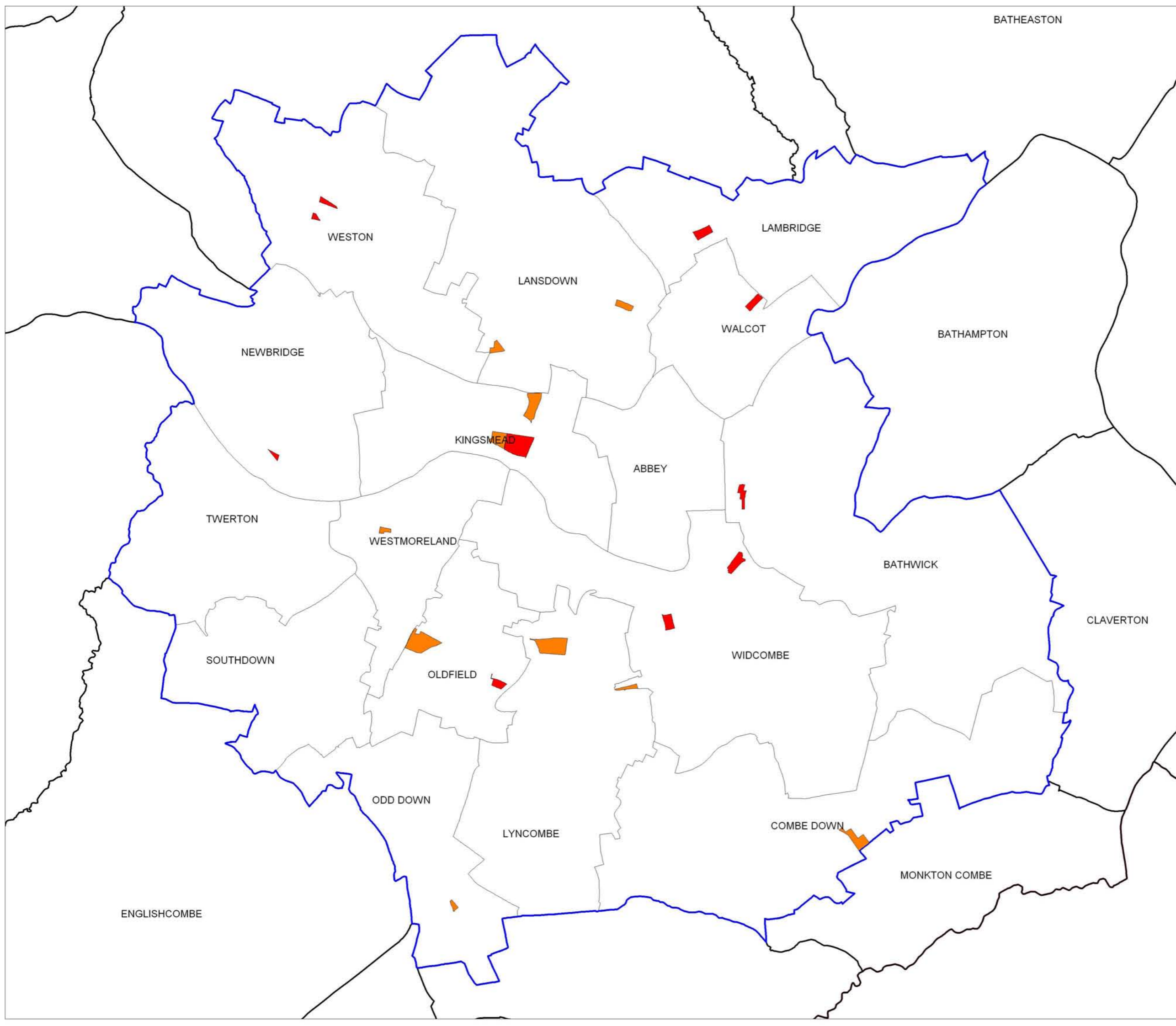
Bath City Boundary

Ward Boundaries

Bath & North East Somerset Local Authority Area

This map is reproduced from Ordnance Survey material with the permission of Ordnance Survey on behalf of the Controller of Her Majesty's Stationery Office. Crown copyright ©. Unauthorised reproduction infringes Crown copyright and may lead to prosecution or civil proceedings. Bath & North East Somerset Council. LA09054I. 2006

Drawn by:	Checked by:	Date:
HB	IB	16/11/06





# Bath & North East Somerset Green Space Strategy

Figure 5.4 Quality of Formal Green Space by Site - Keynsham

## LEGEND

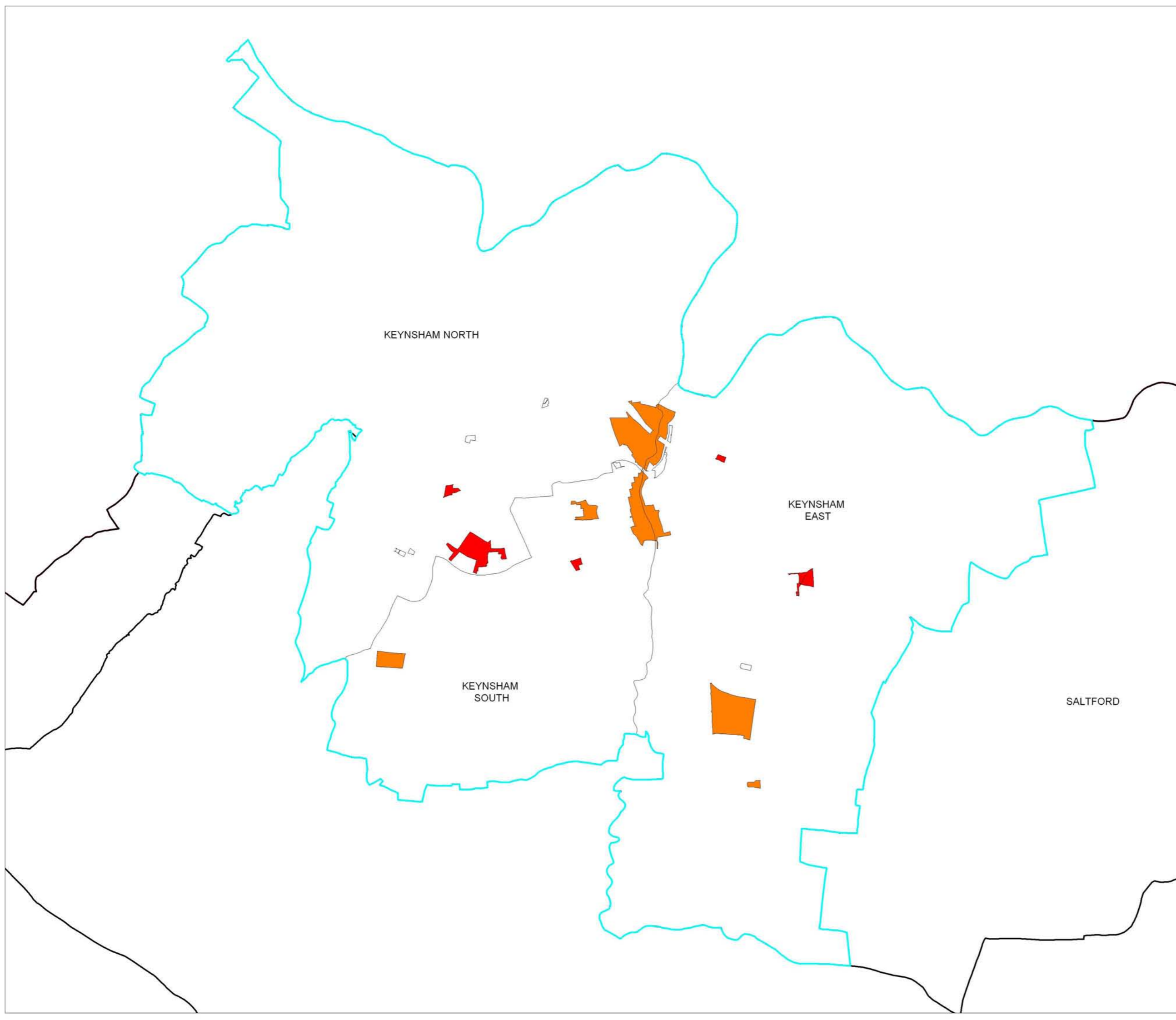
### Quality Score

- 70 to 100
- 50 to 70
- 1 to 50
- Sites not assessed

Keynsham Boundary

Ward Boundaries

Bath & North East Somerset Local Authority Area



This map is reproduced from Ordnance Survey material with the permission of Ordnance Survey on behalf of the Controller of Her Majesty's Stationery Office. Crown copyright ©. Unauthorised reproduction infringes Crown copyright and may lead to prosecution or civil proceedings. Bath & North East Somerset Council. LA09054I. 2006

Drawn by:	Checked by:	Date:
HB	IB	16/11/06



# Bath & North East Somerset Green Space Strategy

Figure 5.5 Quality of Natural Green Space by Site - Keynsham

## LEGEND

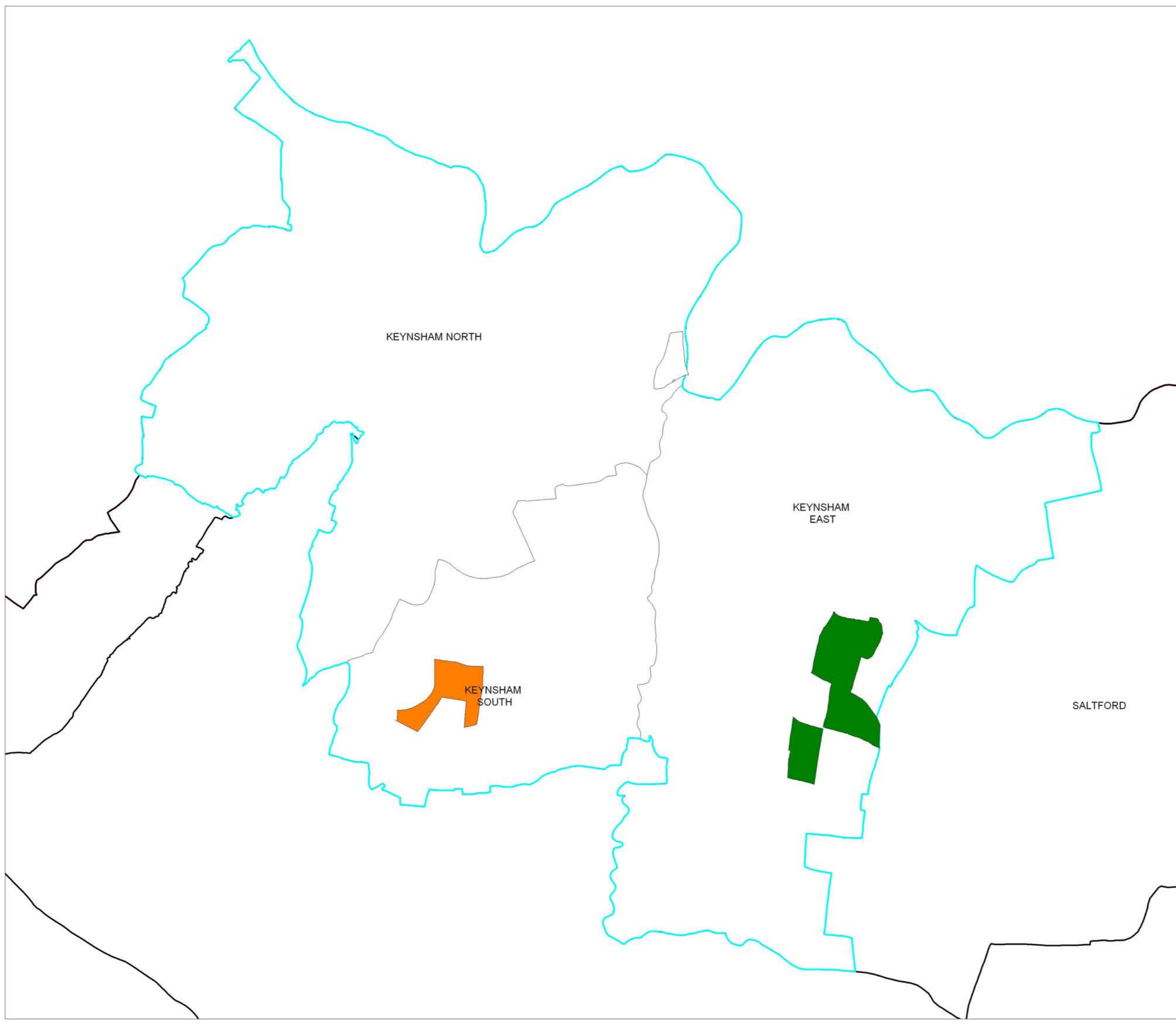
### Quality Score

- 70 to 100
- 50 to 70
- 1 to 50
- Sites not assessed

Keynsham Boundary

Ward Boundaries

Bath & North East Somerset Local Authority Area



This map is reproduced from Ordnance Survey material with the permission of Ordnance Survey on behalf of the Controller of Her Majesty's Stationery Office. Crown copyright ©. Unauthorised reproduction infringes Crown copyright and may lead to prosecution or civil proceedings. Bath & North East Somerset Council. LA09054I. 2006

Drawn by:	Checked by:	Date:
HB	IB	16/11/06



# Bath & North East Somerset Green Space Strategy

Figure 5.6 Quality of Allotments by Site - Keynsham

## LEGEND

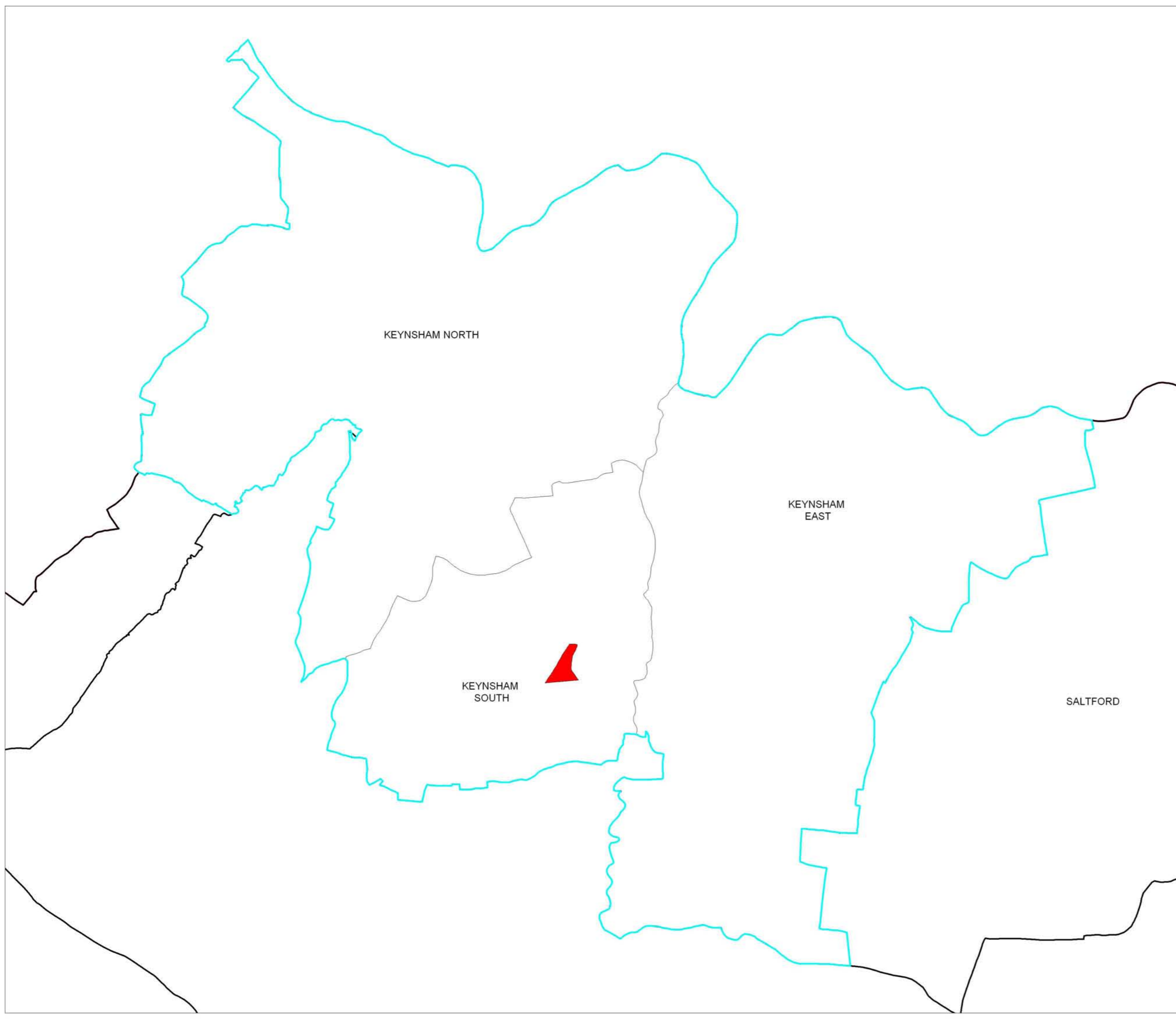
### Quality Score

- 70 to 100
- 50 to 70
- 1 to 50
- Sites not assessed

Keynsham Boundary

Ward Boundaries

Bath & North East Somerset Local Authority Area



This map is reproduced from Ordnance Survey material with the permission of Ordnance Survey on behalf of the Controller of Her Majesty's Stationery Office. Crown copyright ©. Unauthorised reproduction infringes Crown copyright and may lead to prosecution or civil proceedings. Bath & North East Somerset Council. LA09054I. 2006

Drawn by:	Checked by:	Date:
HB	IB	16/11/06



# Bath & North East Somerset Green Space Strategy

Figure 5.7 Quality of Formal Green Space by Site - Norton Radstock

## LEGEND

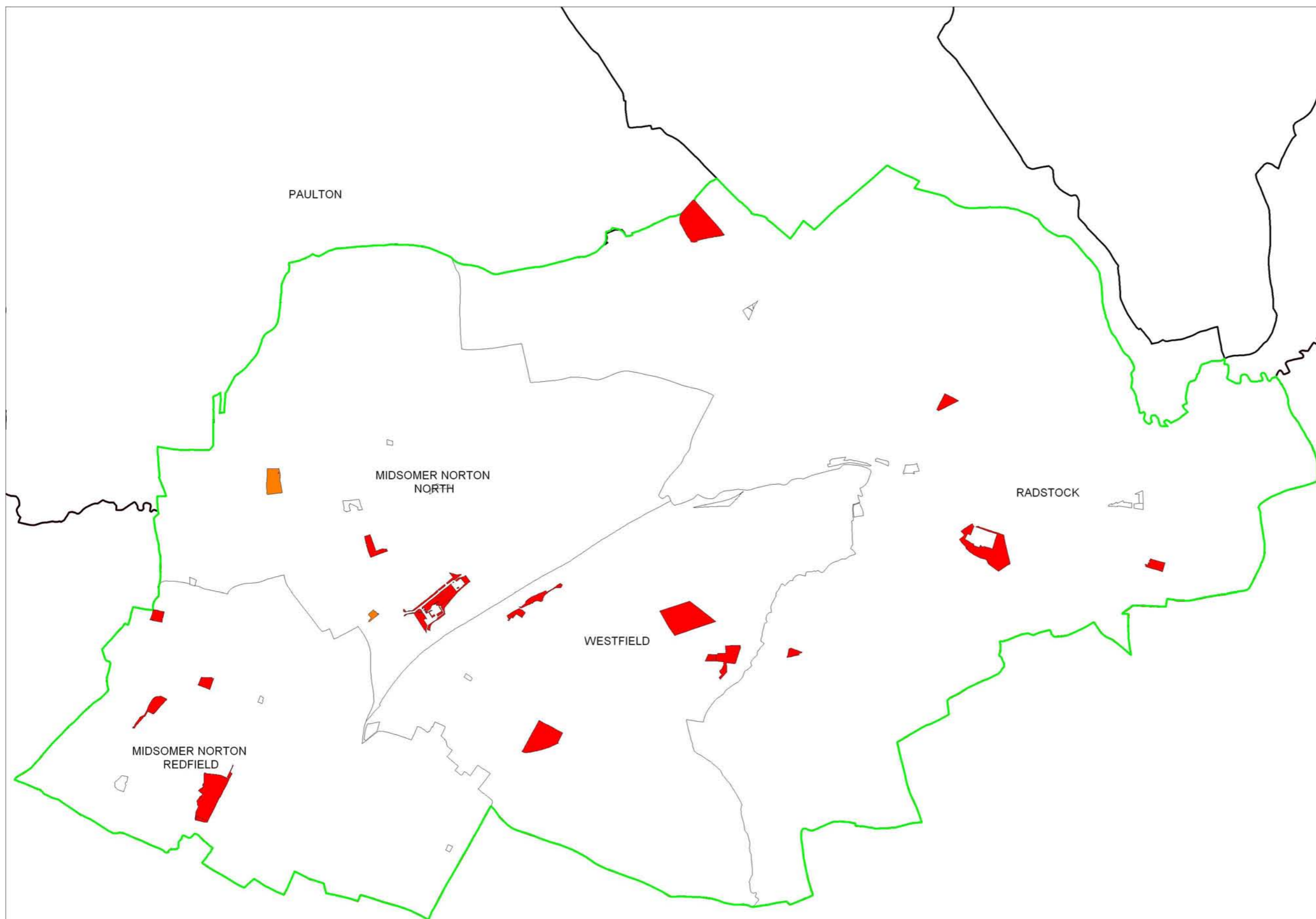
### Quality Score

- 70 to 100
- 50 to 70
- 1 to 50
- Sites not assessed

Norton Radstock Boundary

Ward Boundaries

Bath & North East Somerset Local Authority Area



This map is reproduced from Ordnance Survey material with the permission of Ordnance Survey on behalf of the Controller of Her Majesty's Stationery Office. Crown copyright ©. Unauthorised reproduction infringes Crown copyright and may lead to prosecution or civil proceedings. Bath & North East Somerset Council. LA09054I. 2006

Drawn by:	Checked by:	Date:
HB	IB	16/11/06



# Bath & North East Somerset Green Space Strategy

Figure 5.8 Quality of Natural Green Space by Site - Norton Radstock

## LEGEND

### Quality Score

- 70 to 100
- 50 to 70
- 1 to 50
- Sites not assessed

Norton Radstock Boundary

Ward Boundaries

Bath & North East Somerset Local Authority Area



This map is reproduced from Ordnance Survey material with the permission of Ordnance Survey on behalf of the Controller of Her Majesty's Stationery Office. Crown copyright ©. Unauthorised reproduction infringes Crown copyright and may lead to prosecution or civil proceedings. Bath & North East Somerset Council. LA09054I. 2006

Drawn by:	Checked by:	Date:
HB	IB	16/11/06



# Bath & North East Somerset Green Space Strategy

Figure 5.9 Quality of Allotments by Site - Norton Radstock

## LEGEND

### Quality Score

- 70 to 100
- 50 to 70
- 1 to 50
- Sites not assessed

Norton Radstock Boundary

Ward Boundaries

Bath & North East Somerset Local Authority Area



This map is reproduced from Ordnance Survey material with the permission of Ordnance Survey on behalf of the Controller of Her Majesty's Stationery Office. Crown copyright ©. Unauthorised reproduction infringes Crown copyright and may lead to prosecution or civil proceedings. Bath & North East Somerset Council. LA09054I. 2006

Drawn by:	Checked by:	Date:
HB	IB	16/11/06



# Bath & North East Somerset Green Space Strategy

Figure 5.10 Quality of Formal Green Space by Site - Parish

## LEGEND

### Quality Score

- 70 to 100
- 50 to 70
- 1 to 50
- Sites not assessed

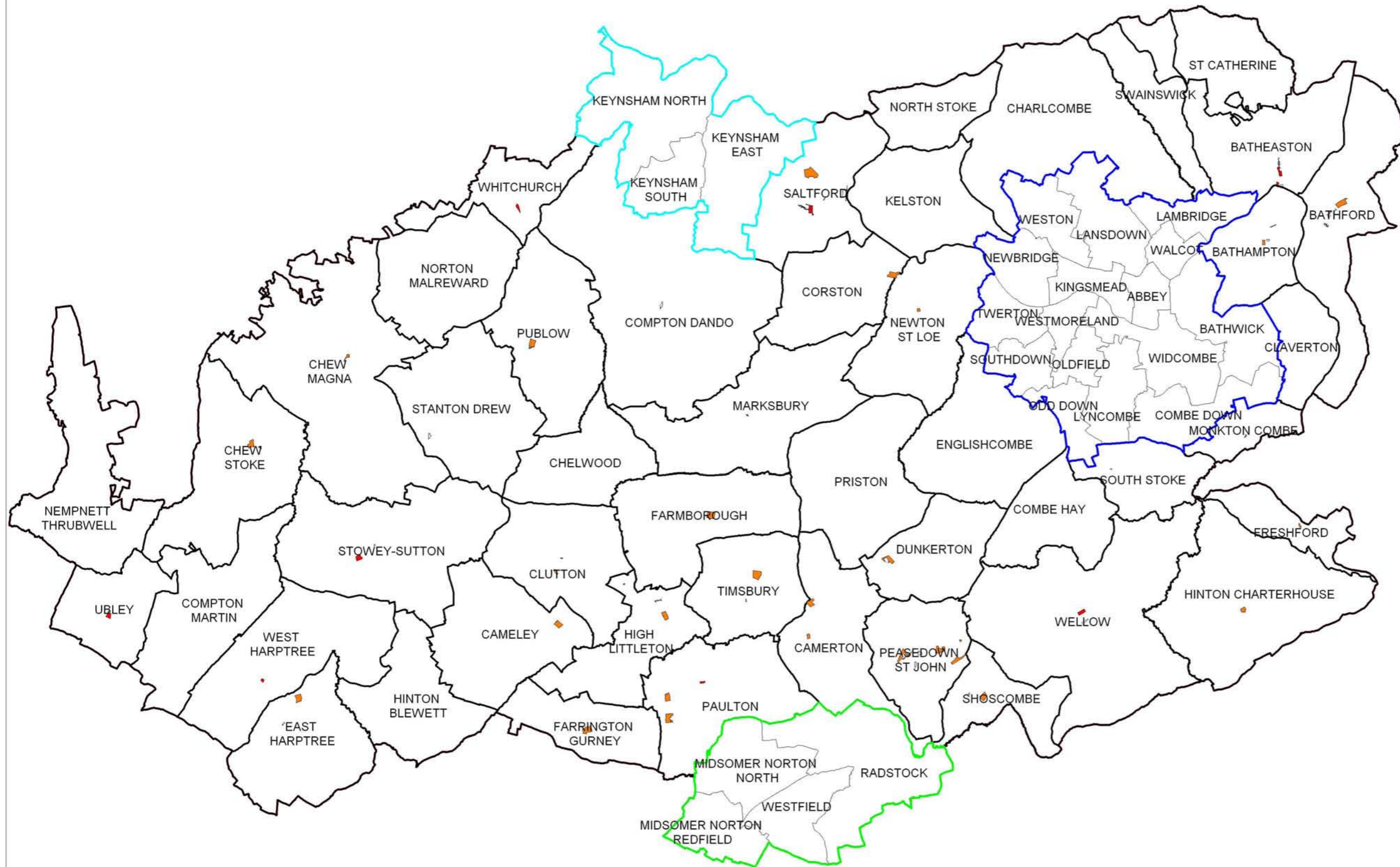
Norton Radstock Boundary

Keynsham Boundary

Bath City Boundary

Parish Boundaries

Bath & North East Somerset Local Authority Area



This map is reproduced from Ordnance Survey material with the permission of Ordnance Survey on behalf of the Controller of Her Majesty's Stationery Office. Crown copyright ©. Unauthorised reproduction infringes Crown copyright and may lead to prosecution or civil proceedings. Bath & North East Somerset Council. LA090541. 2006

Drawn by:	Checked by:	Date:
HB	IB	16/11/06



# Bath & North East Somerset Green Space Strategy

Figure 5.11 Quality of Allotments by Site - Parish

## LEGEND

### Quality Score

- 70 to 100
- 50 to 70
- 1 to 50
- Sites not assessed

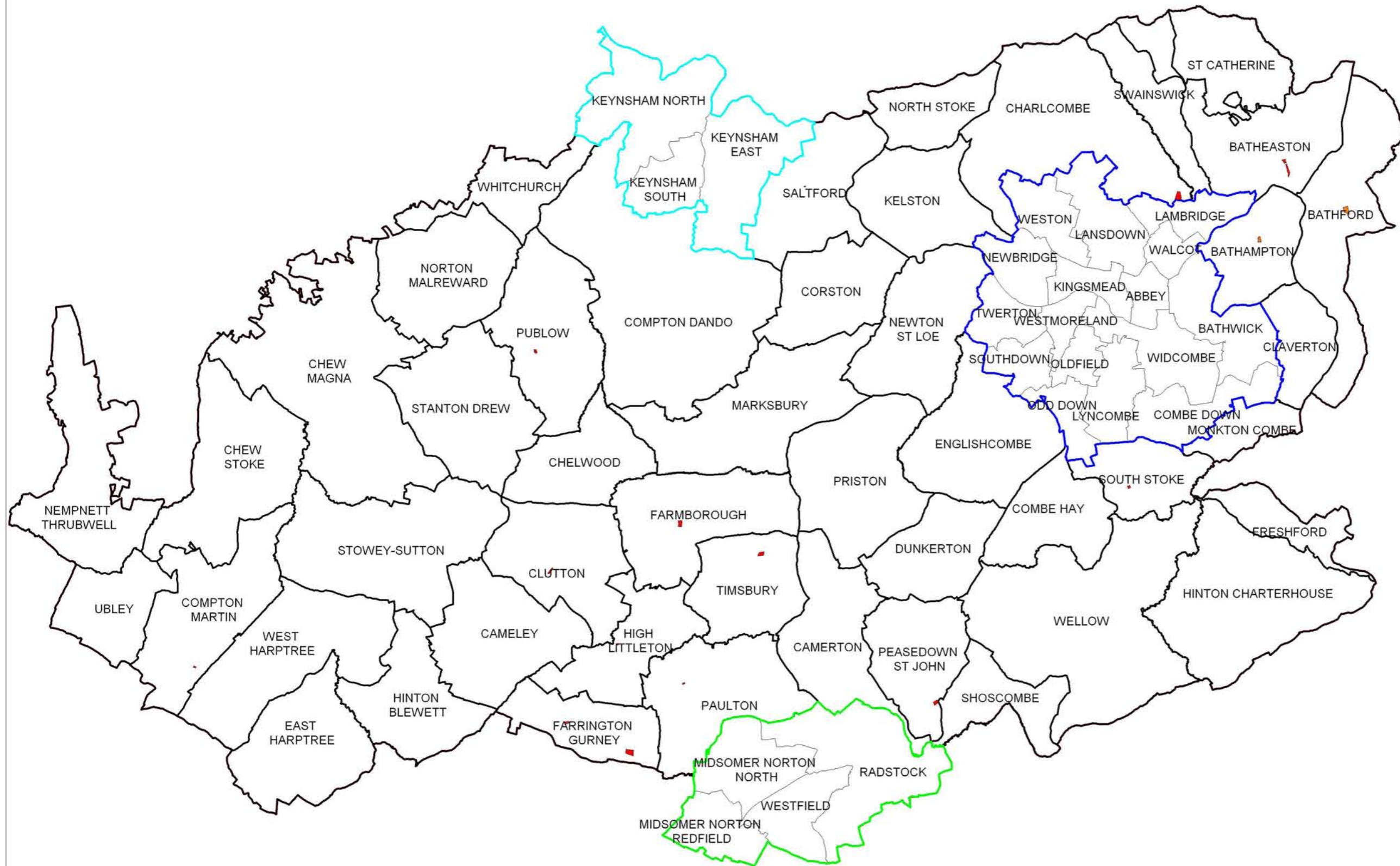
Norton Radstock Boundary

Keynsham Boundary

Bath City Boundary

Parish Boundaries

Bath & North East Somerset Local Authority Area



This map is reproduced from Ordnance Survey material with the permission of Ordnance Survey on behalf of the Controller of Her Majesty's Stationery Office. Crown copyright ©. Unauthorised reproduction infringes Crown copyright and may lead to prosecution or civil proceedings. Bath & North East Somerset Council. LA090541. 2006

Drawn by:	Checked by:	Date:
HB	IB	16/11/06





## 5.5 Quality summary

The main issues arising from the quality assessments are;

- A range of average scores were revealed for the different types of space;

<b>Type of space</b>	<b>Average quality score</b>
Natural	57
Formal	52
Allotments	47

- Landscape quality scored the highest of the criteria for both formal and natural spaces whereas security and safety scored highest for allotments
- Education was the lowest scoring criteria for formal and natural spaces yet for allotments it was natural heritage
- District sites have the highest average quality for formal sites with doorstep having the lowest
- District sites have the highest average quality for natural sites with neighbourhood having the lowest
- Quality by location – Norton Radstock shows the lowest average quality score, Keynsham has the highest natural green space average score, rural parishes show the lowest average score for allotments

## 5.6 Quality standard

The proposed quality standard for all green space types is 60%, based on the assessment methodology used in this strategy.