

Bath & North East Somerset Green Space Strategy (2015-2029)

**Bath & North East
Somerset Council**

Green Space Area Profile: Somer Valley



Report produced on behalf of Bath and North East Somerset Council by Ethos Environmental Planning

CONTENTS

| | | |
|------------|--|----------------|
| 1.0 | Somer Valley Area Profile | 2 - 4 |
| 1.1 | Introduction | |
| 1.2 | Geographical Area | |
| 1.3 | Population | |
| 1.4 | Somer Valley – vision and spatial strategy overview | |
| 2.0 | Existing provision of green space | 5- 11 |
| 2.1 | Overview of green space provision in the study area | |
| 3.0 | Analysis of existing quantity of Green Space | 12- 13 |
| 3.1 | Introduction | |
| 3.2 | Current quantity provision of green space | |
| 4.0 | Analysis of existing access to Green Space | 14 - 20 |
| 5.0 | Summary of quality issues and opportunities for Green Space | 21 - 24 |
| 5.1 | Introduction | |
| 5.2 | Audit methodology | |
| 5.3 | Summary of priority sites | |
| 5.4 | Site Hierarchies | |
| 6.0 | Future need for Green Space | 25 - 35 |
| 6.1 | Overall impact on green space | |
| 6.2 | Scenario – green space requirements from development | |
| 7.0 | Summary of issues and priorities for the area | 36 |
| Appendix 1 | Summary quality scores | |

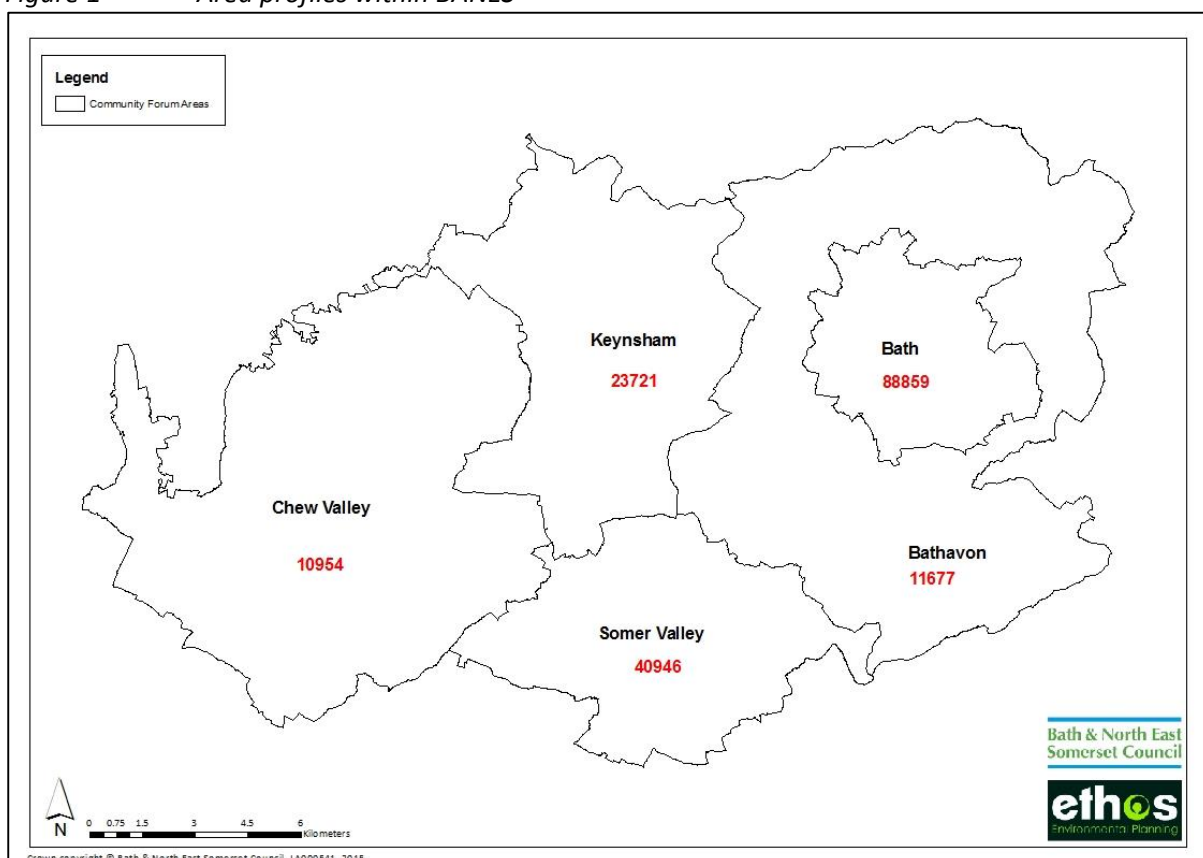
1.0 SOMER VALLEY AREA PROFILE

1.1 Introduction

The Bath and North east Somerset Green Space Strategy is presented in two parts. The first part comprises an overview of the whole study and includes details on local needs, methodology, open space typologies and analysis of provision which combine to make recommendations for future provision and policies for open space in the district. The second part of the study comprises five green space area profiles which provide more localised information.

The area profiles have been developed for five areas as shown in figure 1. These draw on the established forum areas (*see section 1.3.4 of Part 1*), and the City of Bath, which is currently not established as a community forum area, however, for the purpose of this study, the wards that comprise Bath have been grouped together as an individual analysis area.

Figure 1 Area profiles within BANES



The area profiles should be read in conjunction with the main report (part 1). Each profile includes the following information:

- A description of the area;
- Maps showing the provision of green space;
- Quantitative analysis of current provision of open space'
- Analysis of access to open space;
- Summary of quality issues and opportunities;
- Analysis of future need for open space;
- Priorities for the area.

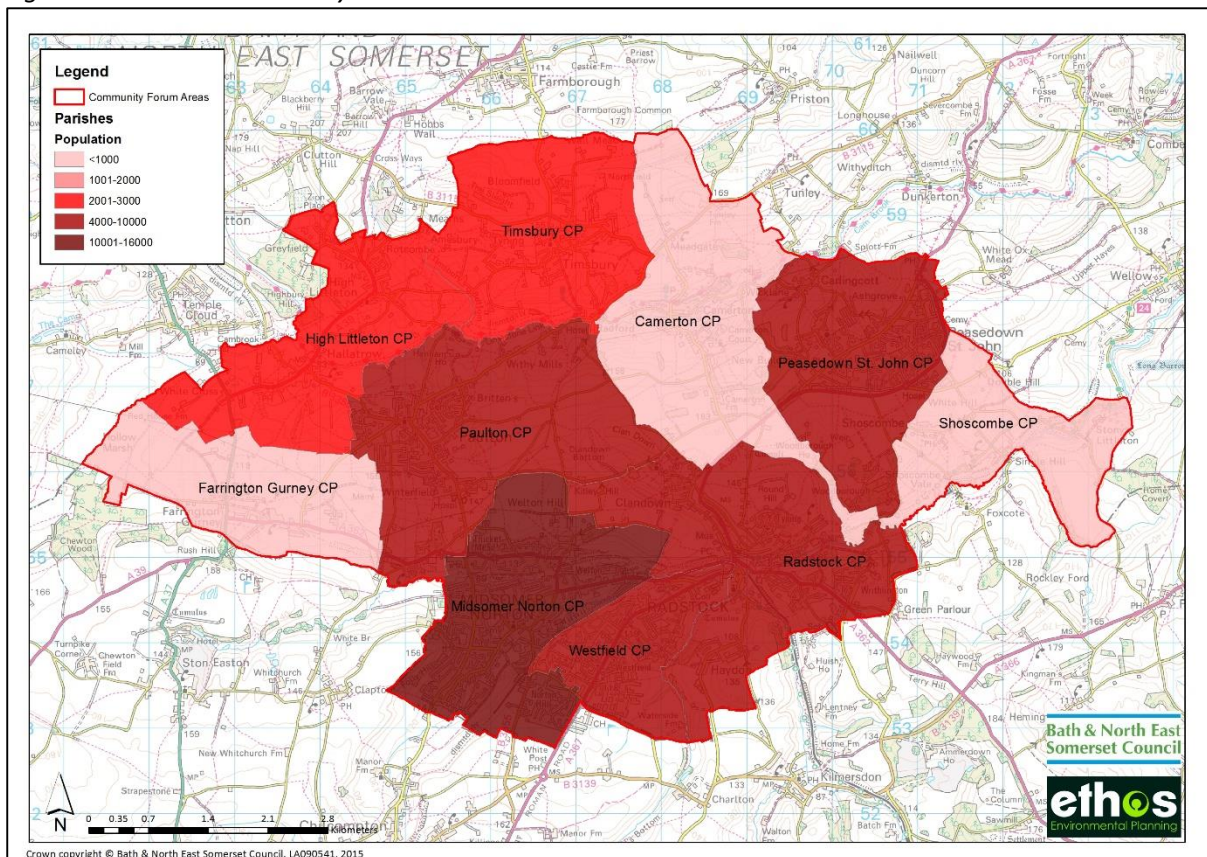
The area profiles are intended to be a starting point to inform other strategies and plans, including neighbourhood plans, planning policies, development control policies; parks and open spaces service and action plans.

All of the maps provided within this section of the report are intended to be used for indicative purposes only. Larger scale maps have been provided as a separate database to the council.

1.2 Geographical Area

The Somer Valley Green Space Area Profile comprises the parishes that make up the Somer Valley forum area, as shown in figure 2.

Figure 2 Somer Valley Area



1.3 Population

Table 1 Parish population statistics (Census, 2011)

| Parish | Population |
|-------------------|---------------|
| Camerton | 655 |
| Farrington Gurney | 901 |
| High Littleton | 2,104 |
| Midsomer Norton | 10,997 |
| Peasedown St John | 6,446 |
| Paulton | 5,302 |
| Radstock | 5,620 |
| Shoscombe | 443 |
| Timsbury | 2,624 |
| Westfield | 5,854 |
| Total | 40,946 |

1.4 Somer Valley – vision and spatial strategy overview

The BANES Core Strategy sets out a vision and spatial strategy for the Somer Valley, as summarised below:

The southern part of the District will become more self-reliant, facilitated by economic-led revitalisation alongside local energy generation, building on its industrial expertise and improving skill levels. Transport connections to other centres, as well as connections between settlements within the Somer Valley area will continue to be improved.

The roles of Midsomer Norton and Radstock Town Centres will be complementary, providing key employment opportunities, services and leisure provision to the communities in the Somer Valley area. Midsomer Norton town centre will continue to be the principal centre with an improved public realm and enhanced townscape and a Town Park. Radstock will continue to provide a focal point for local communities and realise its potential for tourism based on its green infrastructure, mining heritage, cycle ways and attractive rural hinterland.

Villages of the Somer Valley will continue to provide for the needs of their local communities.

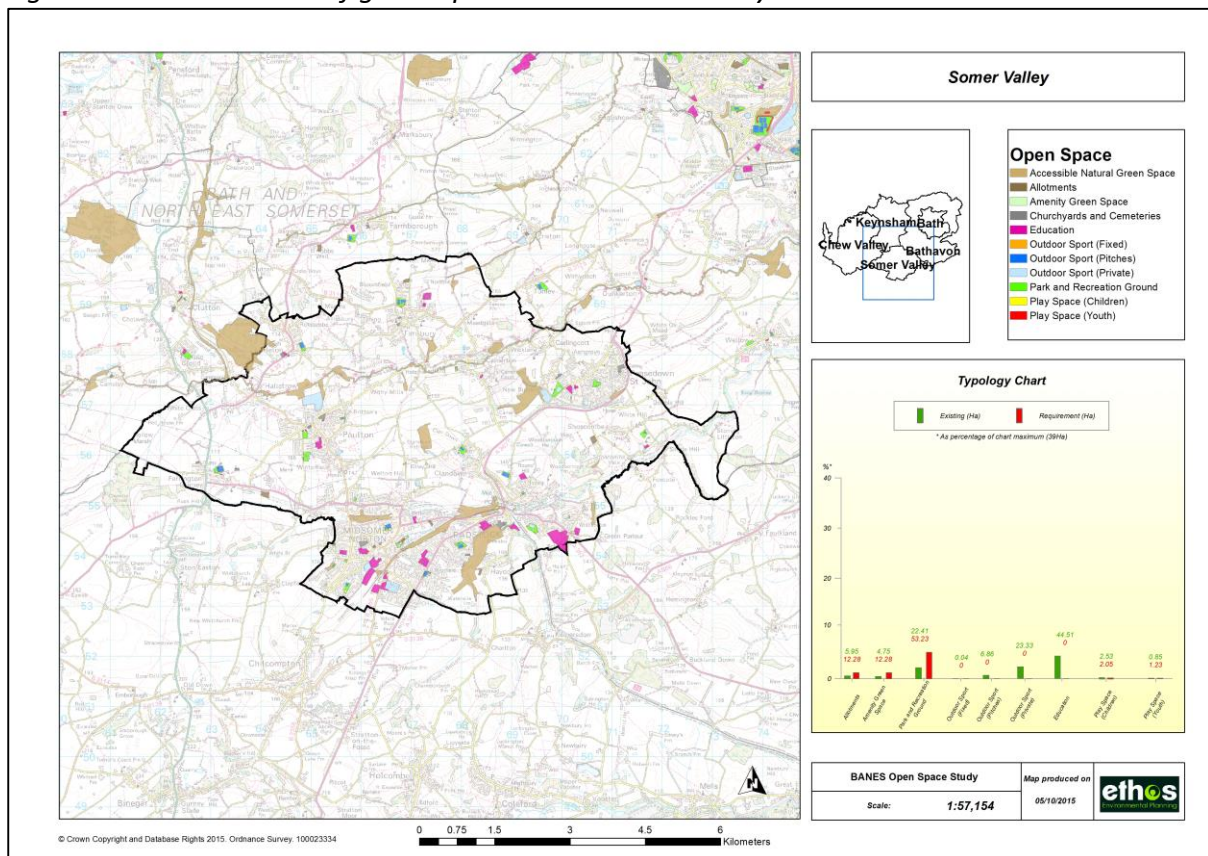
2.0 Existing provision of Green Space

This section provides maps showing existing green spaces that have been mapped and included within the study. A map is shown for the overall area, and then individual maps for each of the wards/parish as appropriate. The maps are intended to be used for indicative purposes and large scale maps and a GIS database of sites have been provided as an electronic database to the council.

It should be noted that for Accessible Natural Green Space, every effort was made to exclude sites that had no access, although in certain sites this was not always clear (see section 5.3 of the main report (part 1)).

2.1 Overview of green space provision in the study area

Figure 3 Overview of green space in the Somer Valley Area



2.2 Provision by parish

Figure 4 Provision of green space in Farrington Gurney Parish

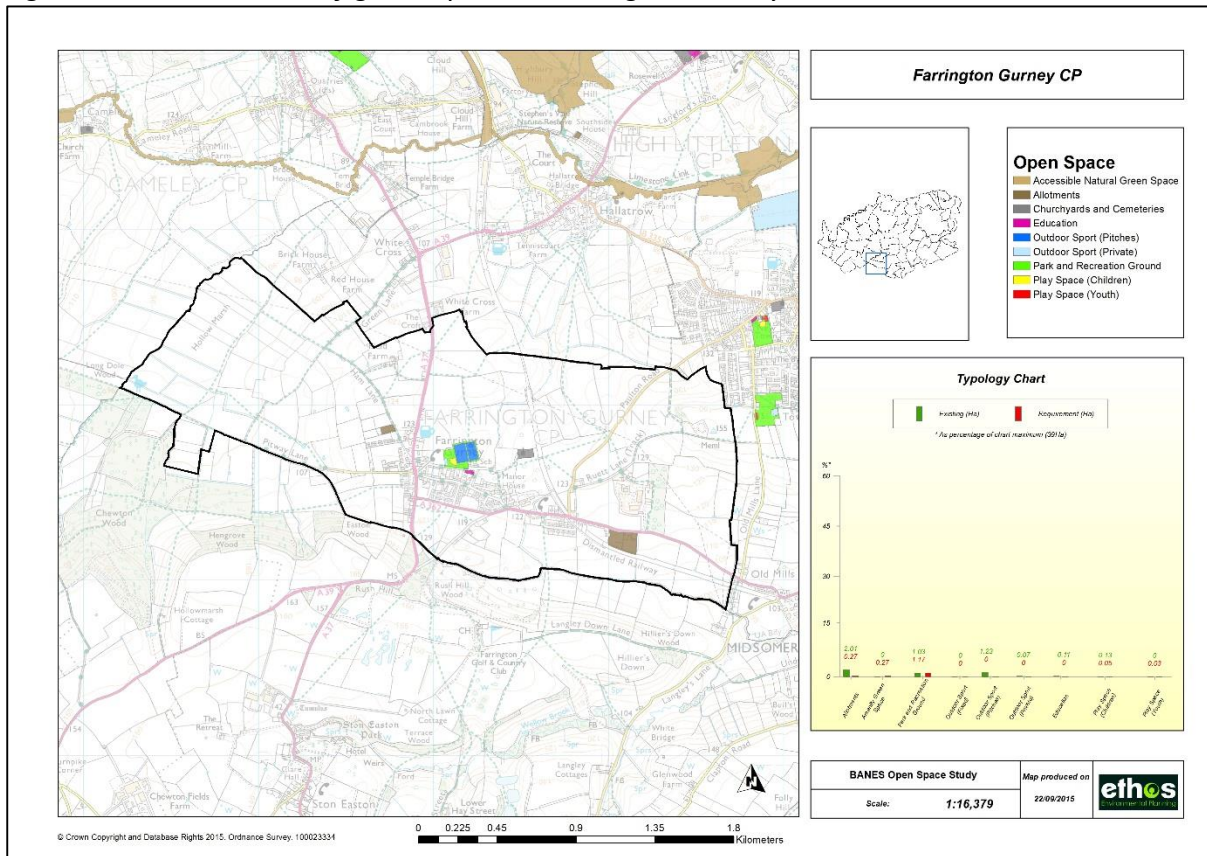


Figure 5 Provision of green space in Camerton Parish

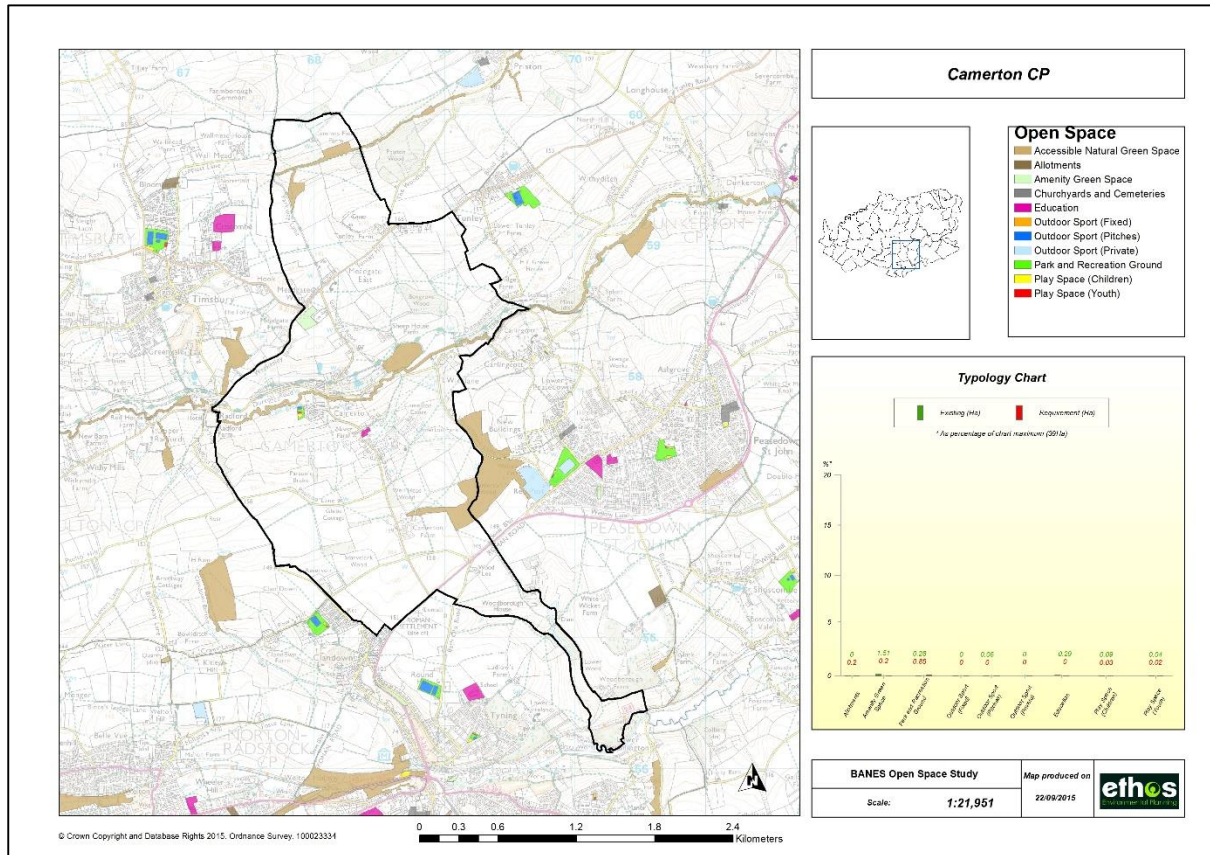


Figure 6 Provision of green space in Midsomer Norton Parish

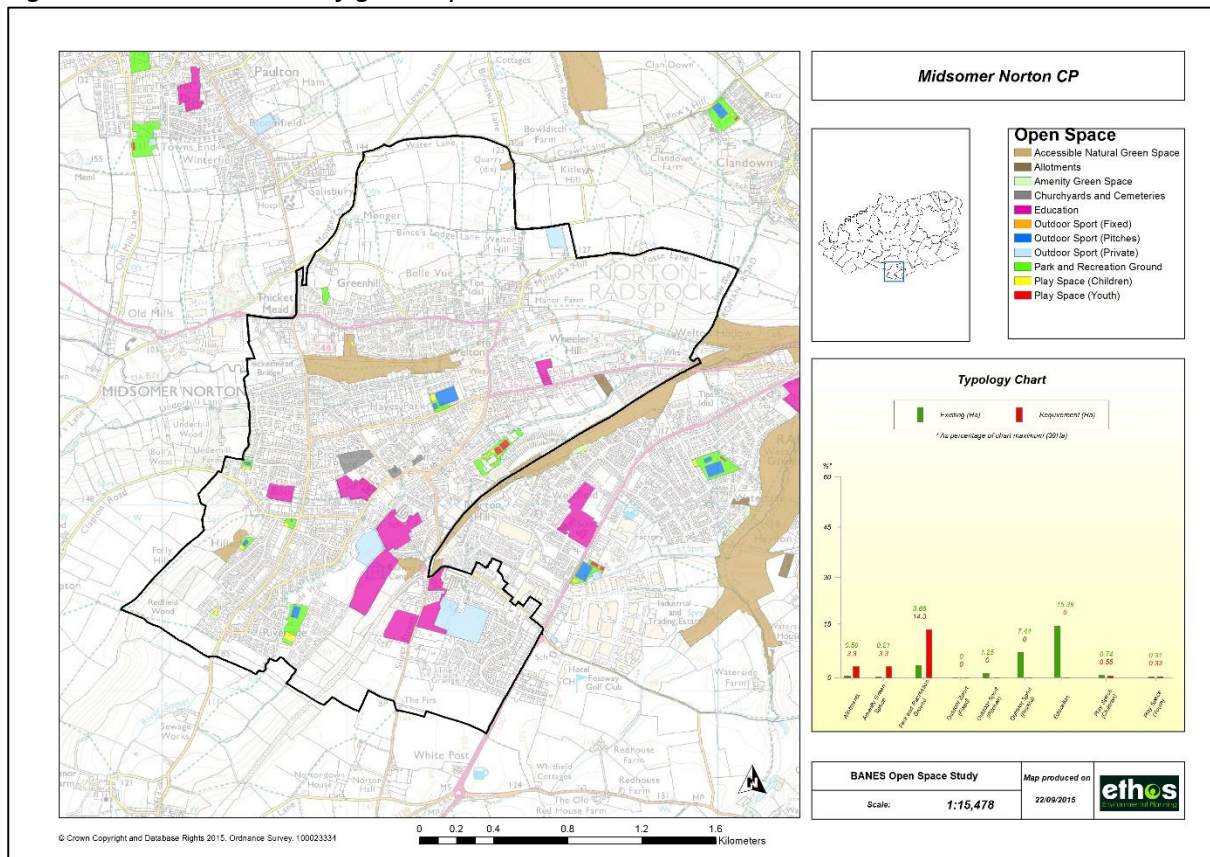


Figure 7 Provision of green space in High Littleton Parish

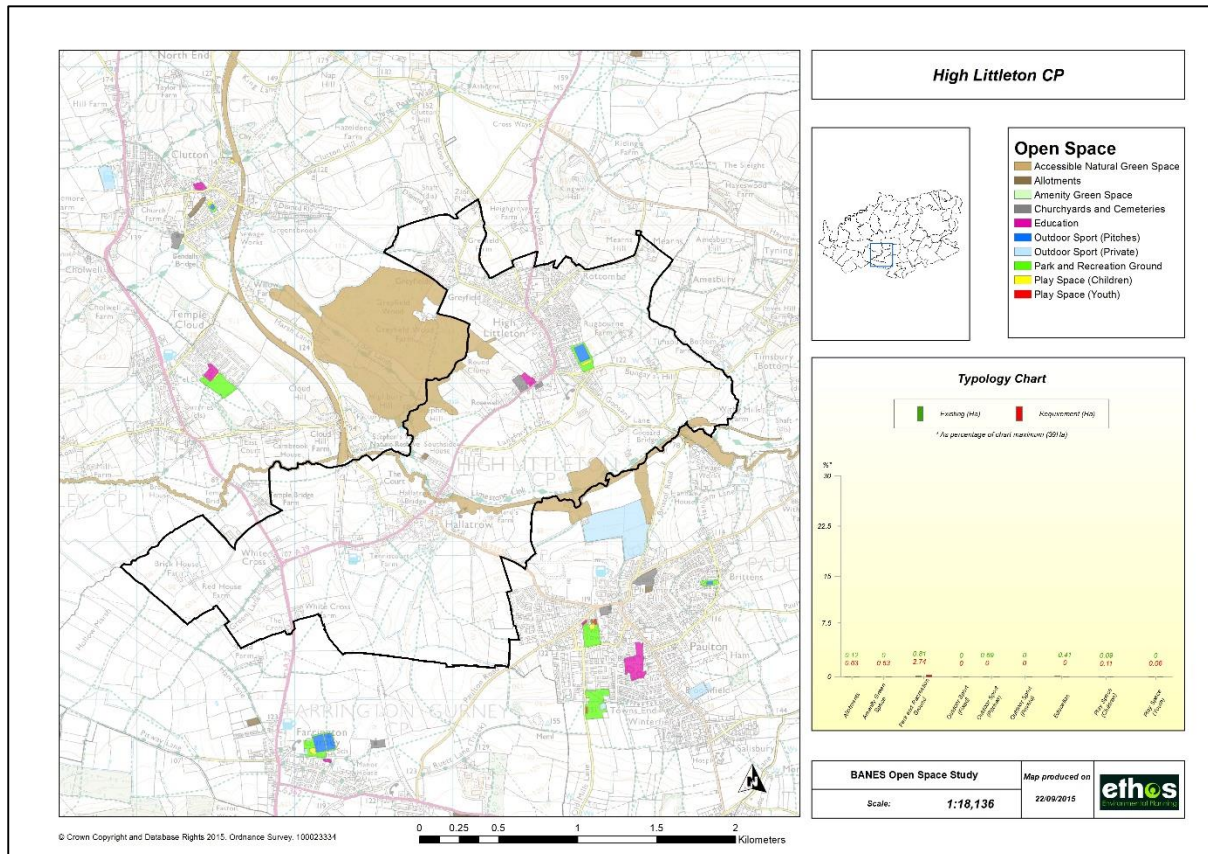


Figure 8 Provision of green space in Peasedown St. John Parish

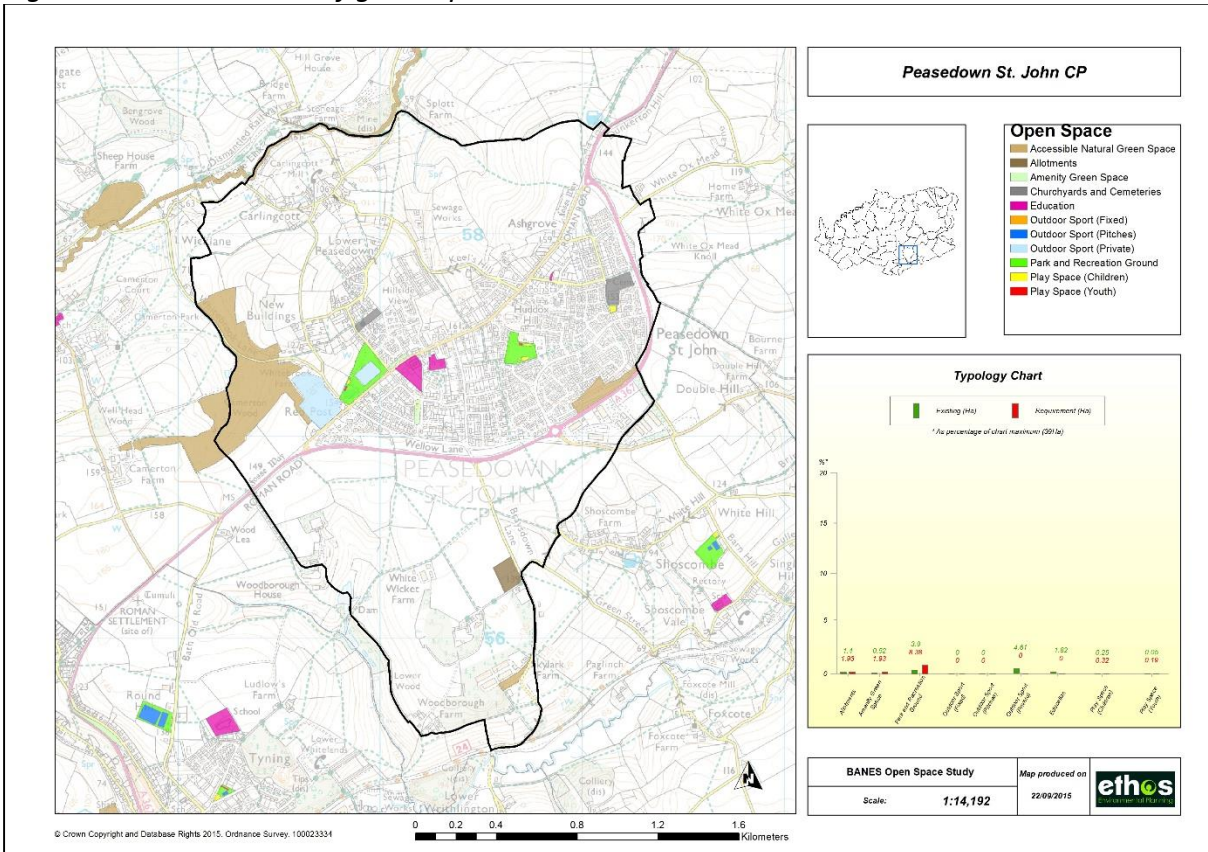


Figure 9 Provision of green space in Paulton Parish

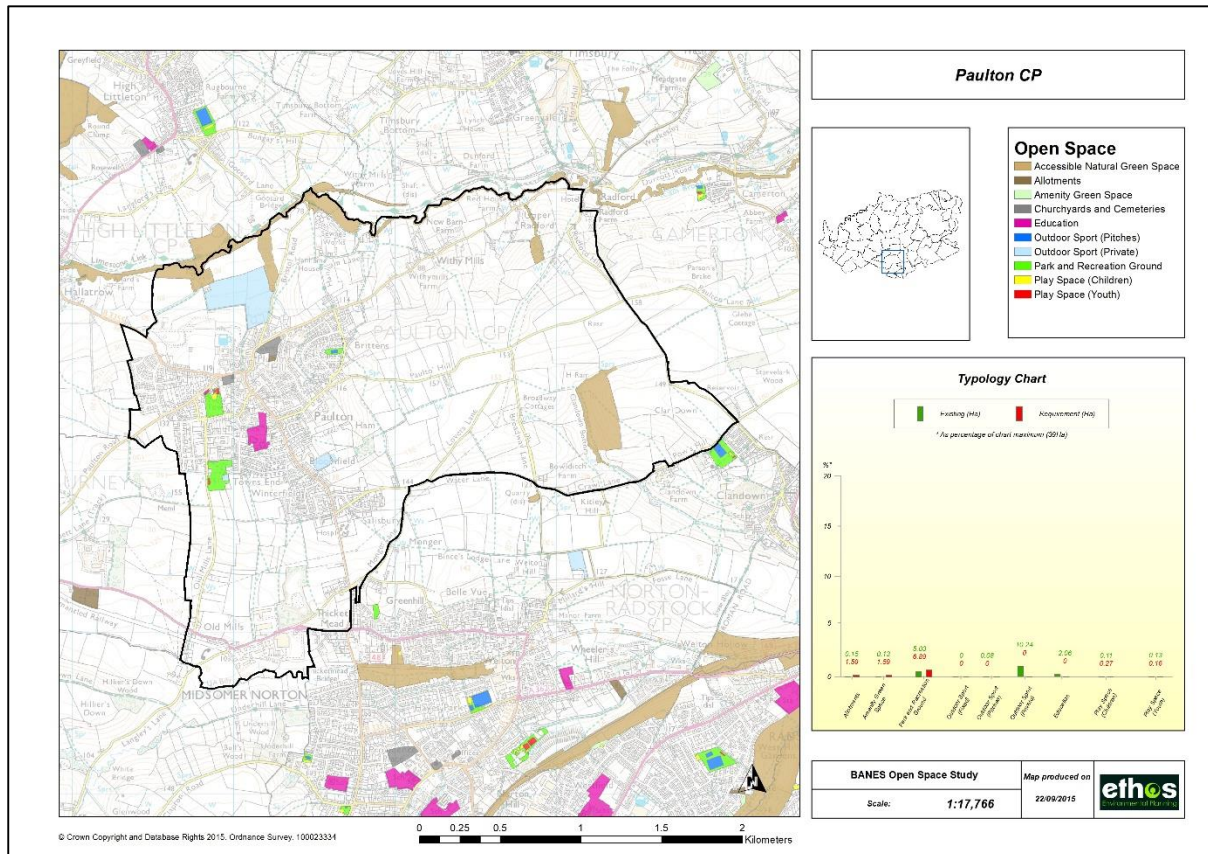


Figure 10 Provision of green space in Shoscombe Parish

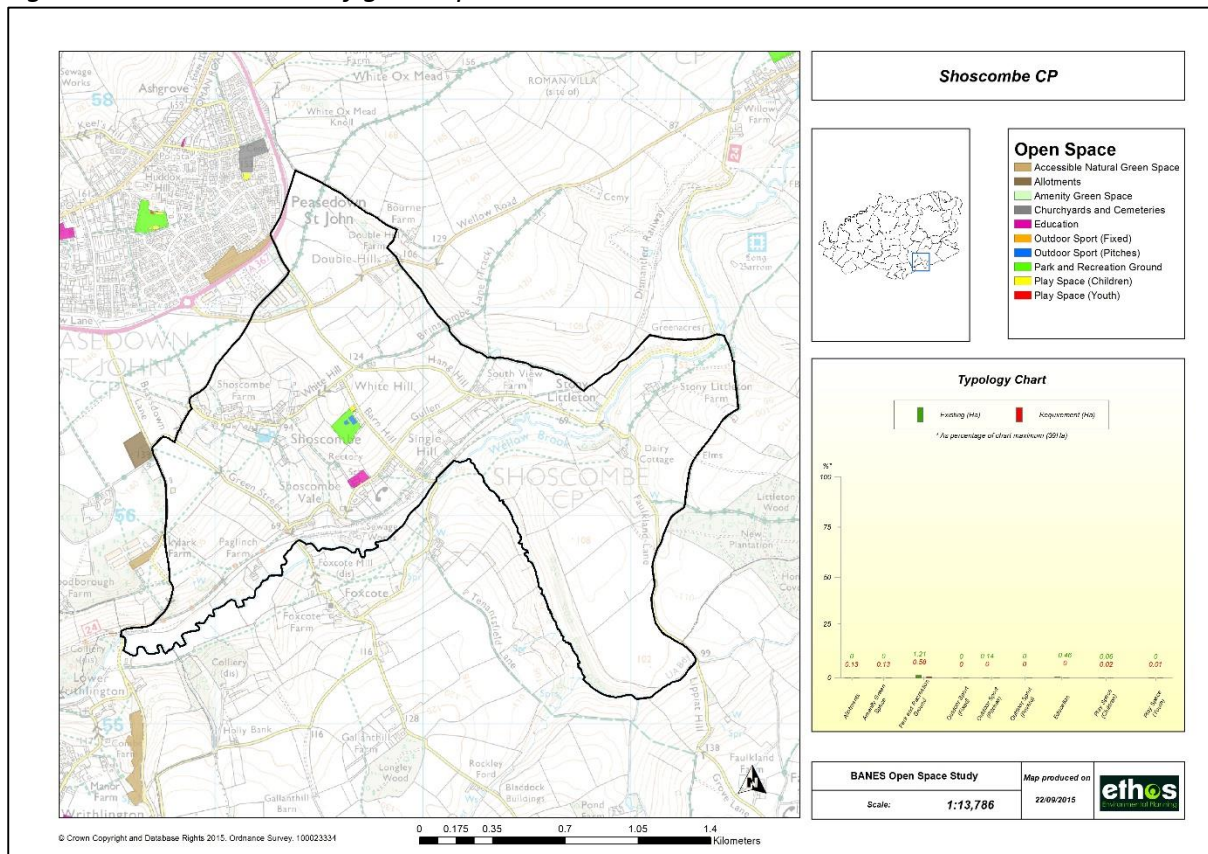


Figure 11 Provision of green space in Radstock Parish

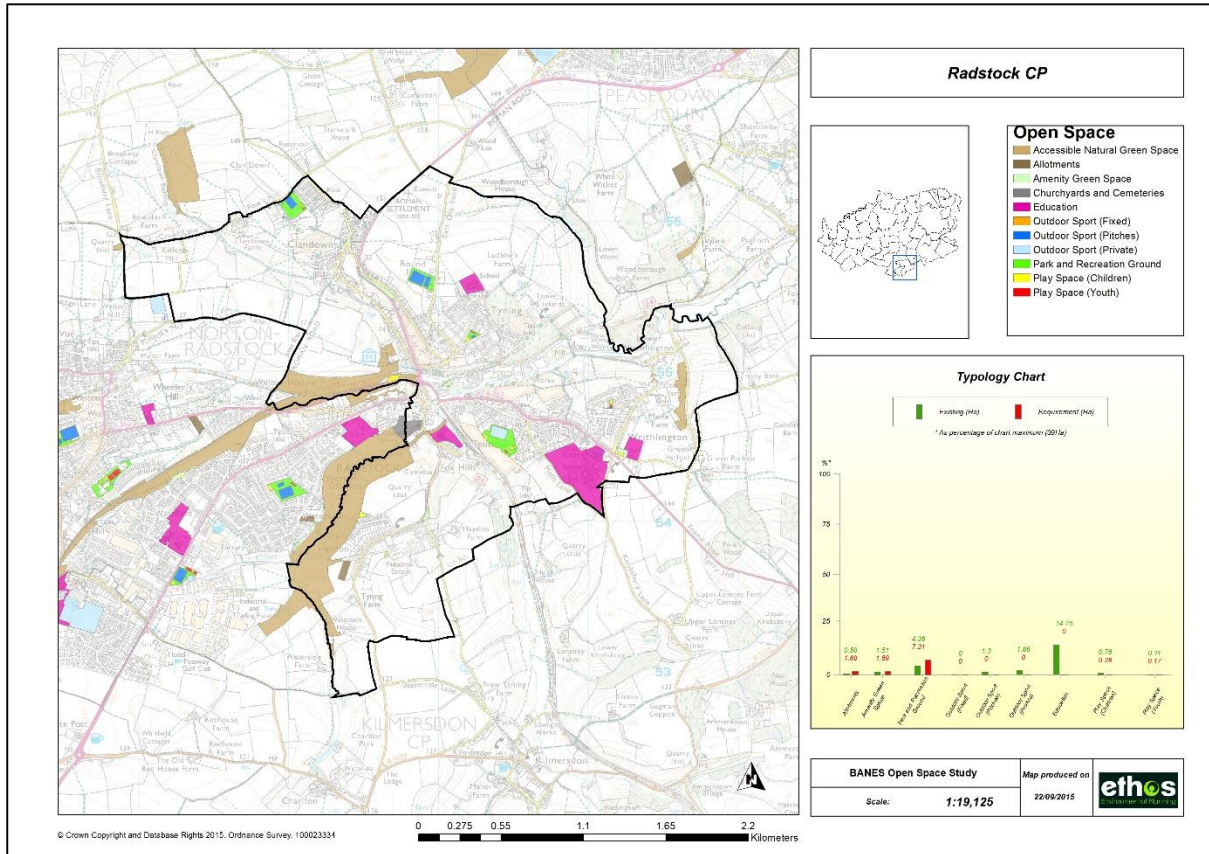


Figure 12 Provision of green space in Timsbury Parish

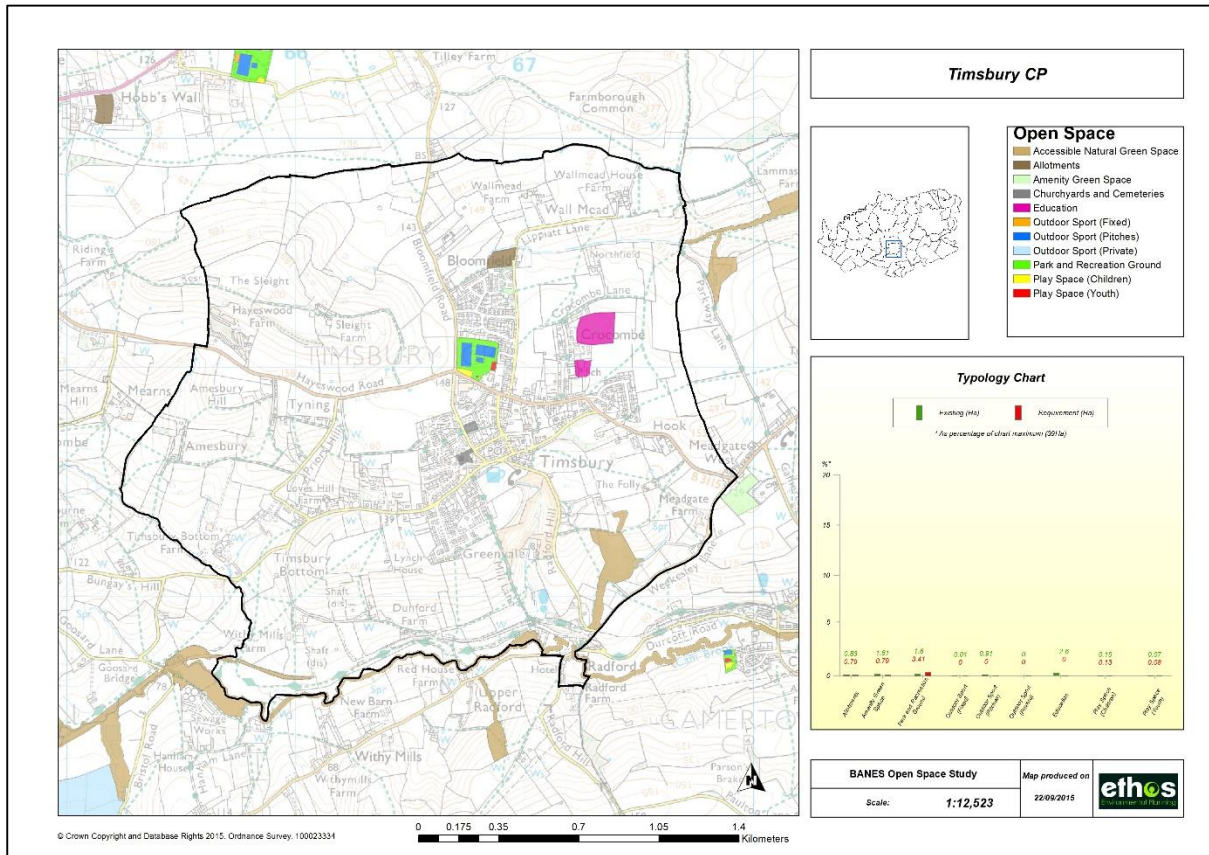
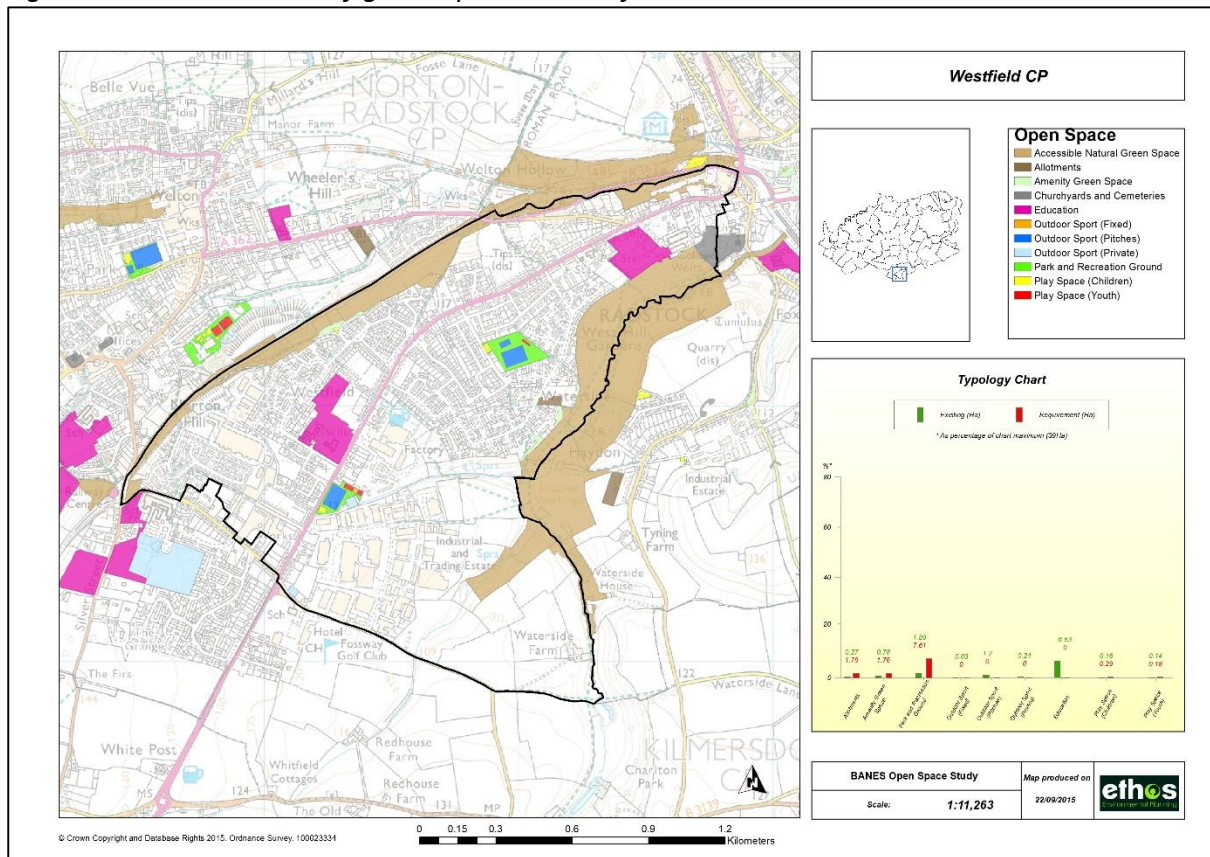


Figure 13 Provision of green space in Westfield Parish



3.0 Analysis of existing quantity of Green Space

3.1 Introduction

This section provides an analysis of the existing quantity of green space within the study area. It uses the quantity standards for green space detailed in part 1 of the report, and summarised in table 2.

Table 2 Summary of quantity standards of open space

| Typology | Quantity standards (ha/1000 population) |
|------------------------------|---|
| Allotments | 0.30 |
| Amenity Green Space | 0.30 |
| Parks and Recreation Grounds | 1.30 |
| Play Space (Children) | 0.05 |
| Play Space (Youth) | 0.03 |
| Natural Green Space | 1.30 to include natural and amenity green space for new provision |
| Community Growing Spaces | None |
| Historic Parks and Gardens | None, but sites mapped |
| Churchyards and Cemeteries | None, but sites mapped and quantity analysed |
| Education | None, but sites mapped and quantity analysed |

The figures for 'Park and Recreation Ground (combined)' shown in table 3, comprise the sum of the following typologies:

- Park and Recreation Ground;
- Outdoor Sports Space (Pitches);
- Outdoor Sports Space (Other).

It is the 'combined' figure that is used for the purpose of analysing quantity, as such it is only this figure where required provision and supply is relevant. Figures have been provided for the individual typologies which make up the combined figure for information only, however, there is no supply assessment for these, hence an 'NA' (Not Applicable) is provided. Existing quantity figures are also provided for a number of typologies where there are no standards, as such these also do not show figures for required provision (a figure of 0.00 is provided) and supply is 'NA', these typologies are:

- Historic parks and gardens;
- Education;
- Churchyard and Cemetery.

The following section provides tables showing the current quantitative provision of open space within the study area.

3.2 Current quantity provision of green space

The following tables show the existing provision of green space within the study area. Figures are given for the overall study area, and for individual parishes or wards. In some areas, green spaces may cross parish/ward boundaries and as such the quantity provision is included within both of those parish/ward totals. Therefore, if individual parishes/wards are added together, this may not add up to the overall total figure for the study area. This factor needs to be taken into account when making decisions about local quantity provision.

Table 3 Existing supply of green space across the whole study area

| Typology | Existing provision (ha) | Existing provision (ha/1000) | Required provision (ha) | Required provision (ha/1000) | Supply (ha) | Supply (Ha/1000) | Supply |
|---------------------------------------|-------------------------|------------------------------|-------------------------|------------------------------|-------------|------------------|-------------------|
| Allotments | 5.95 | 0.15 | 12.28 | 0.30 | -6.33 | -0.15 | UNDER SUPPLY |
| Amenity Green Space | 4.75 | 0.12 | 12.28 | 0.30 | -7.53 | -0.18 | UNDER SUPPLY |
| Park and Recreation Ground (combined) | 29.31 | 0.72 | 53.23 | 1.30 | -23.92 | -0.58 | UNDER SUPPLY |
| Park and Recreation Ground | 22.41 | 0.55 | 53.23 | 1.30 | -30.82 | -0.75 | N/A |
| Outdoor Sport (Pitches) | 6.86 | 0.17 | 0.00 | 0.00 | 6.86 | 0.17 | N/A |
| Outdoor Sport (Fixed) | 0.04 | 0.00 | 0.00 | 0.00 | 0.04 | 0.00 | N/A |
| Outdoor Sport (Private) | 23.33 | 0.57 | 0.00 | 0.00 | 23.33 | 0.57 | N/A |
| Play Space (Children) | 2.53 | 0.06 | 2.05 | 0.05 | 0.48 | 0.01 | SUFFICIENT SUPPLY |
| Play Space (Youth) | 0.85 | 0.02 | 1.23 | 0.03 | -0.38 | -0.01 | UNDER SUPPLY |
| Accessible Natural Green Space | 351.30 | 8.58 | 40.95 | 1.00 | 310.35 | 7.58 | SUFFICIENT SUPPLY |
| Churchyards and Cemeteries | 8.63 | 0.21 | 0.00 | 0.00 | 8.63 | 0.21 | N/A |
| Education | 44.51 | 1.09 | 0.00 | 0.00 | 44.51 | 1.09 | N/A |

Table 4 Supply of green space (hectares) for each Parish within the study area

| PARISH | Allotments | Amenity Green Space | Park and Recreation Ground (combined) | Park and Recreation Ground | Outdoor Sport (Pitches) | Outdoor Sport (Fixed) | Outdoor Sport (Private) | Play Space (Children) | Play Space (Youth) | Accessible Natural Green Space | Churchyards and Cemeteries | Education |
|-------------------|------------|---------------------|---------------------------------------|----------------------------|-------------------------|-----------------------|-------------------------|-----------------------|--------------------|--------------------------------|----------------------------|-----------|
| Camerton | -0.20 | 1.31 | -0.51 | -0.57 | 0.06 | 0.00 | 0.00 | 0.06 | 0.02 | 144.40 | 0.00 | 0.29 |
| Farrington | 1.74 | -0.27 | 1.09 | -0.14 | 1.23 | 0.00 | 0.07 | 0.08 | -0.03 | -0.90 | 0.43 | 0.11 |
| High Littleton | -0.51 | -0.63 | -1.24 | -1.93 | 0.69 | 0.00 | 0.00 | -0.02 | -0.06 | 199.78 | 0.74 | 0.41 |
| Midsomer Norton | -2.71 | -3.09 | -9.39 | -10.64 | 1.25 | 0.00 | 7.44 | 0.19 | -0.02 | 26.85 | 1.91 | 15.38 |
| Paulton | -1.44 | -1.46 | -1.78 | -1.86 | 0.08 | 0.00 | 10.24 | -0.16 | -0.03 | 104.92 | 1.37 | 2.06 |
| Peasedown St John | -0.53 | -1.41 | -4.48 | -4.48 | 0.00 | 0.00 | 4.61 | -0.07 | -0.14 | 116.69 | 1.86 | 1.82 |
| Radstock | -1.10 | -0.18 | -1.65 | -2.95 | 1.30 | 0.00 | 1.86 | 0.48 | -0.06 | 63.70 | 1.80 | 14.75 |
| Shoscombe | -0.13 | -0.13 | 0.77 | 0.63 | 0.14 | 0.00 | 0.00 | 0.04 | -0.01 | -0.44 | 0.00 | 0.46 |
| Timsbury | 0.04 | 0.82 | -0.89 | -1.81 | 0.91 | 0.01 | 0.00 | 0.02 | -0.01 | 100.53 | 0.52 | 2.60 |
| Westfield | -1.49 | -0.98 | -4.49 | -5.72 | 1.20 | 0.03 | 0.24 | -0.13 | -0.04 | 61.05 | 1.80 | 6.63 |

4.0 Analysis of existing access to Green Space

This section provides maps showing access to different types of green space across the study area using the BANES access standards (as summarised in table 5). More detailed maps showing access in each parish/ward have been provided as an electronic appendix. A summary of key access issues is provided in section 7.

Table 5 BANES access standards

| Typology | Access standard |
|------------------------------|---|
| Allotments | 960 metres or 20 minutes' walk time |
| Amenity Green Space | 600 metres or 12-13 minutes' walk time |
| Parks and Recreation Grounds | 600 metres or 12-13 minutes' walk time |
| Play Space (Children) | 480 metres or 10 minutes' walk time |
| Play Space (Youth) | 600 metres or 12-13 minutes' walk time |
| Natural Green Space | ANGSt and Woodland Trust for analysing existing provision – analysed at District level (see part 1 of report) |
| Community Growing Spaces | None |
| Historic Parks and Gardens | None |
| Churchyards and Cemeteries | None |
| Education | None |

Figure 14 Access to Allotments across the Somer Valley Study Area (960 metre buffer)

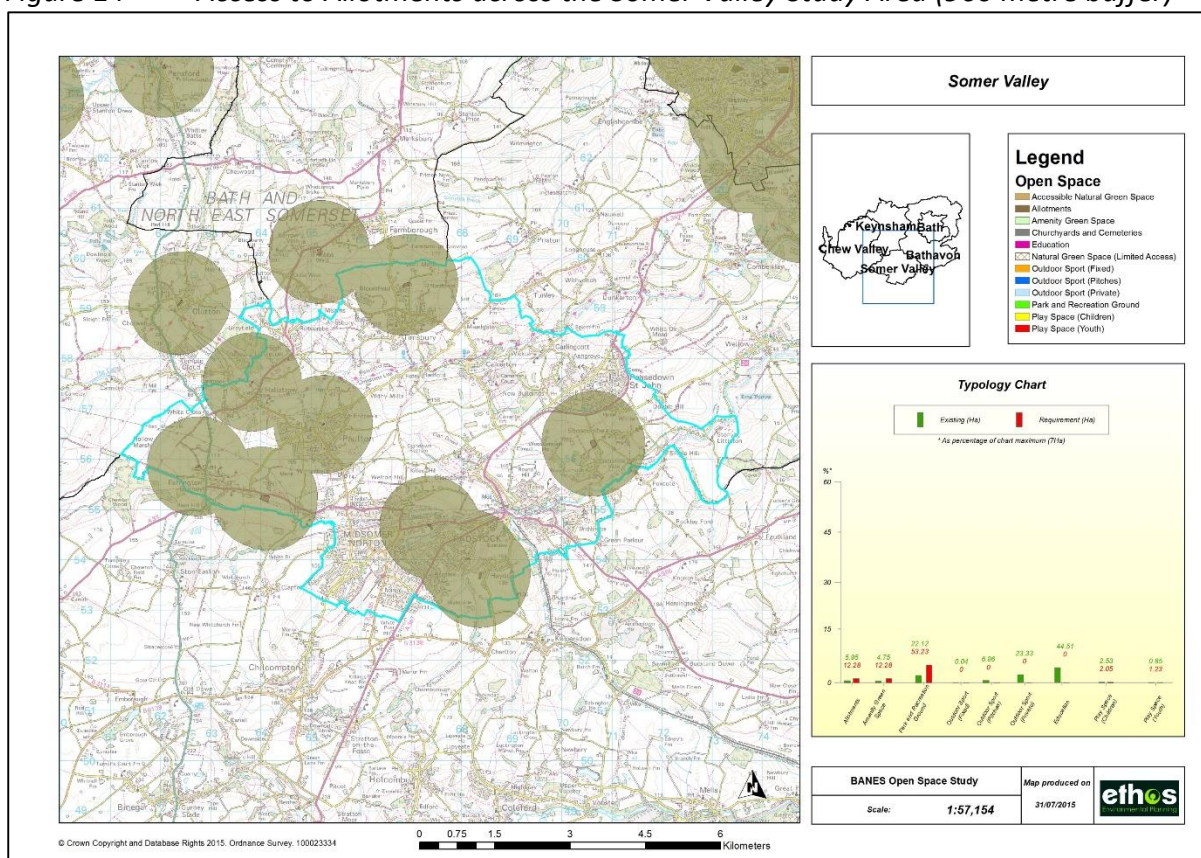


Figure 15 Access to Amenity Green Space across the Somer Valley Study Area (600 metre buffer)

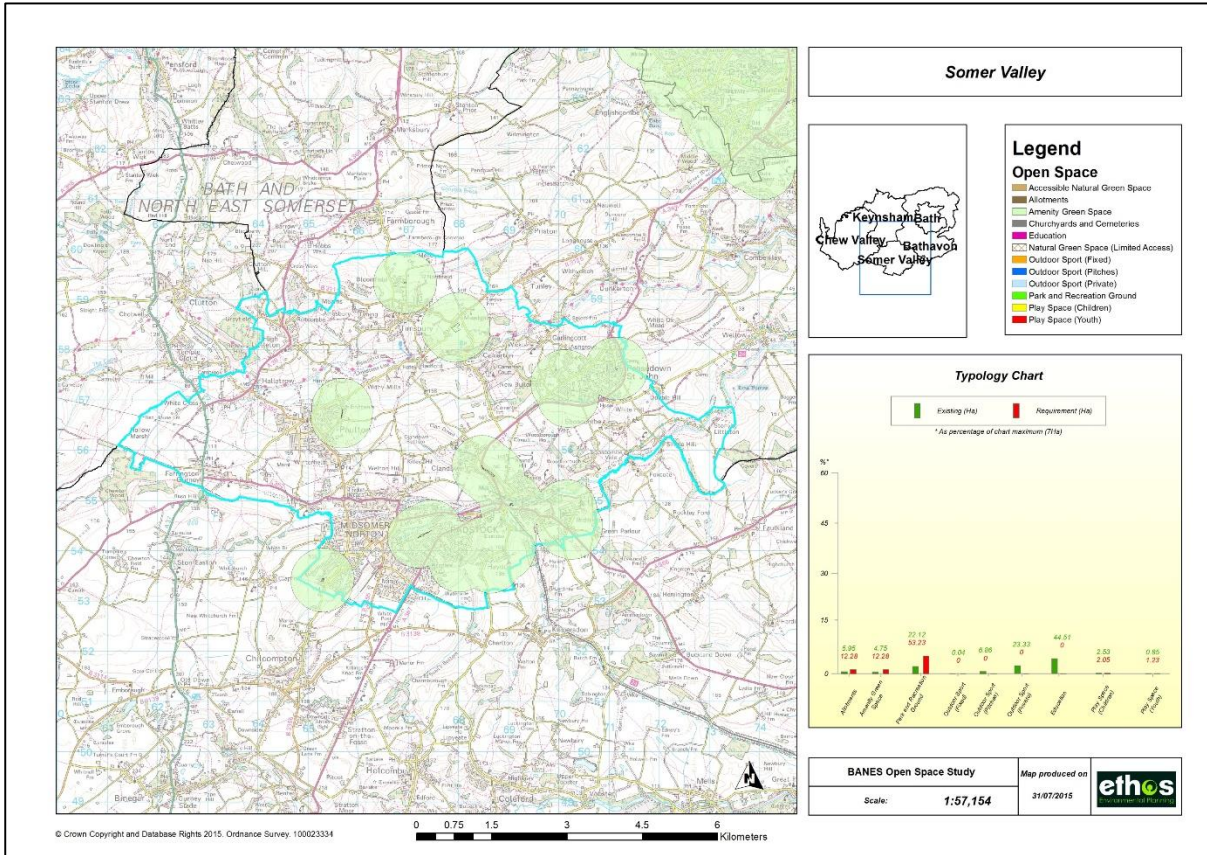


Figure 16 Access to Parks and Recreation Grounds across the Somer Valley Area (600 metre buffer)

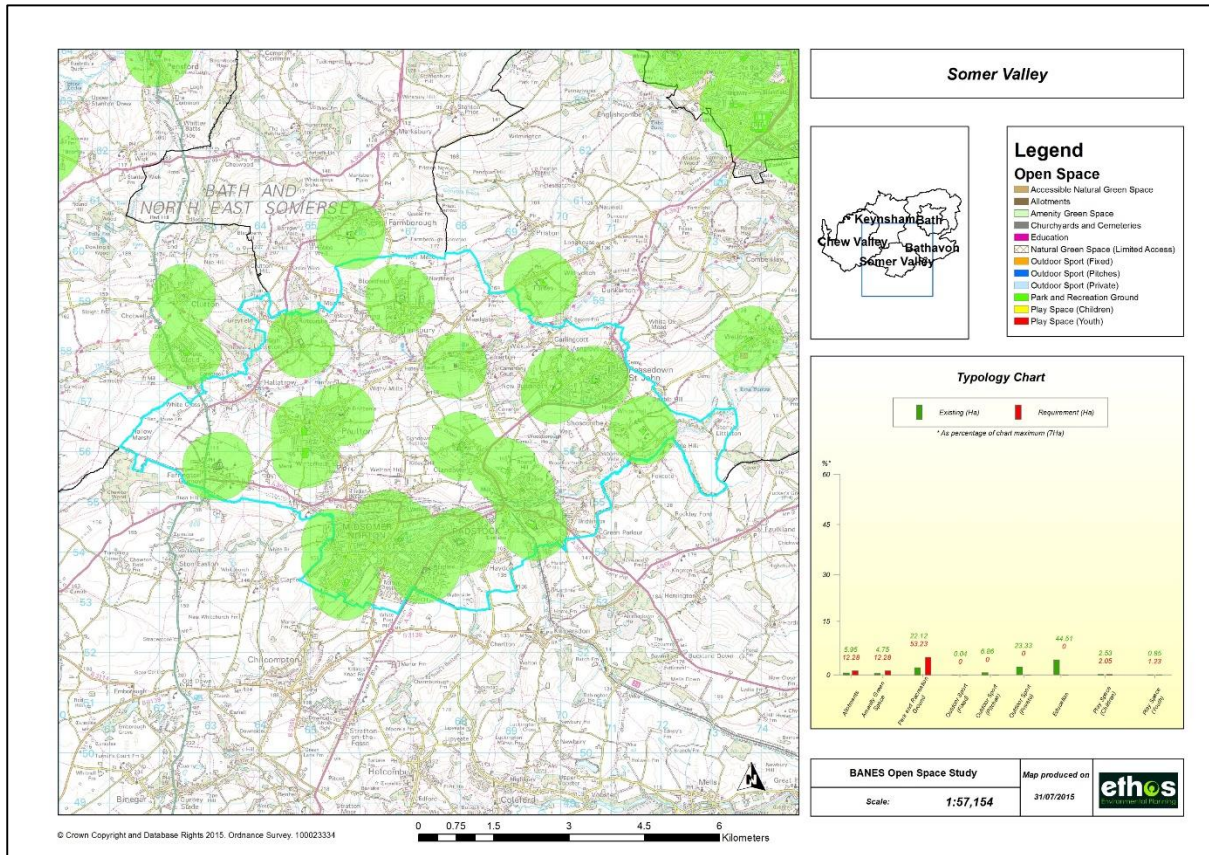


Figure 17 Access to Children’s Play Space across the Somer Valley Study Area (480 metre buffer)

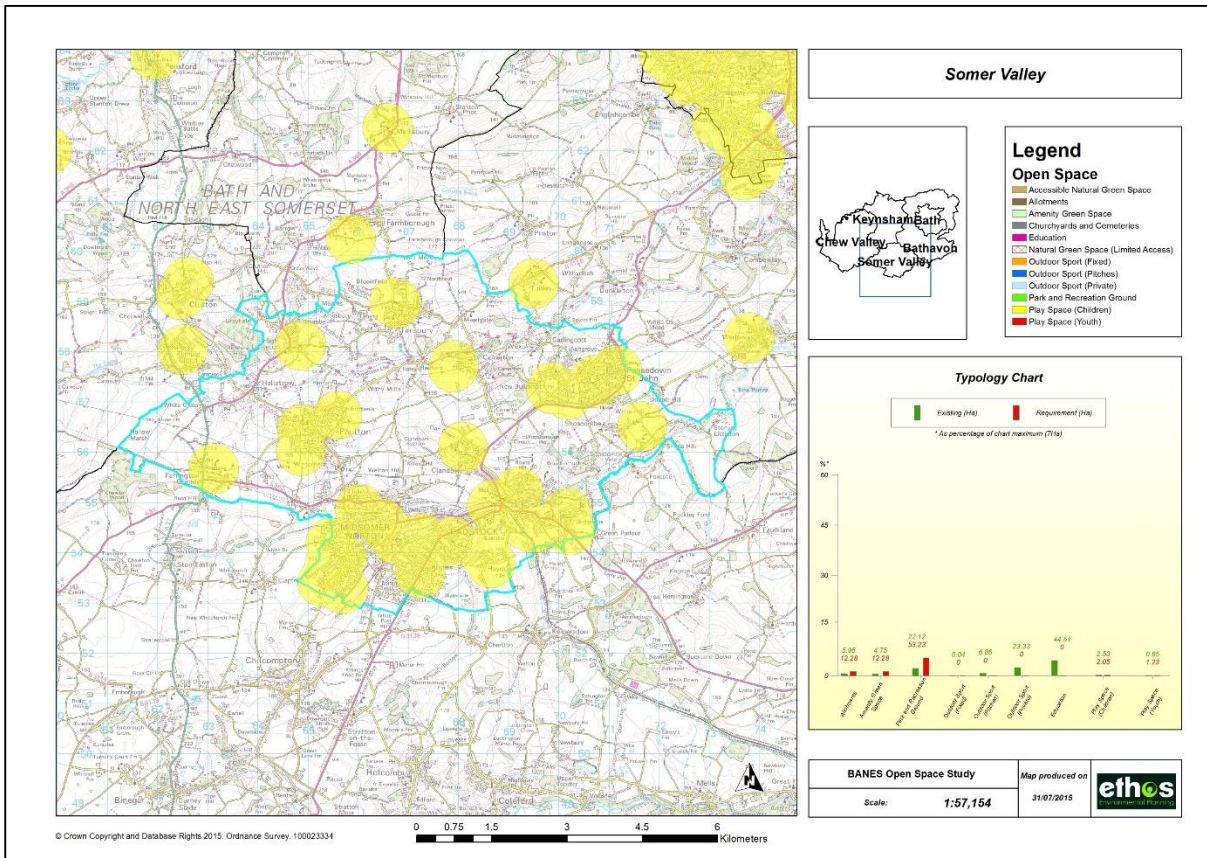


Figure 18 Access to Youth Play Space across the Somer Valley Study Area (600 metre buffer)

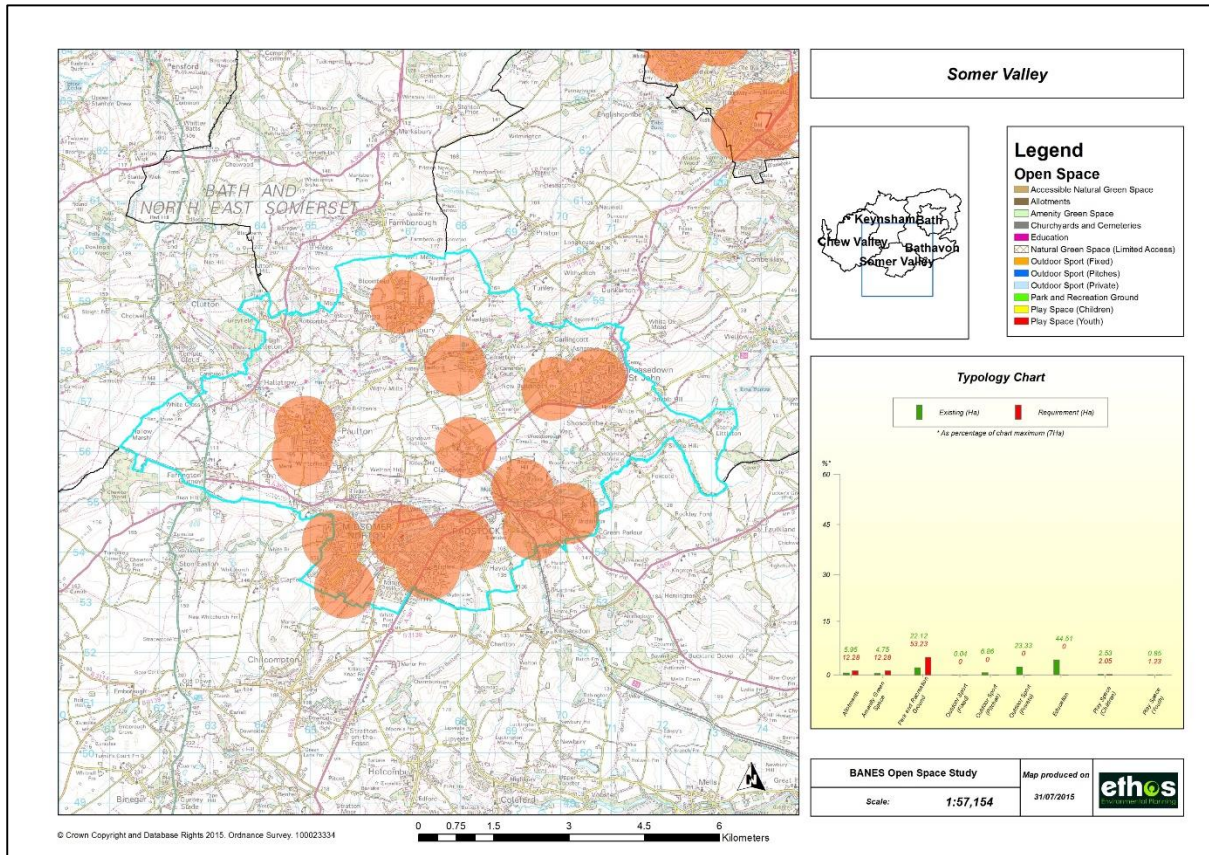


Figure 19 Access to Natural Green Space across the Somer Valley Study Area

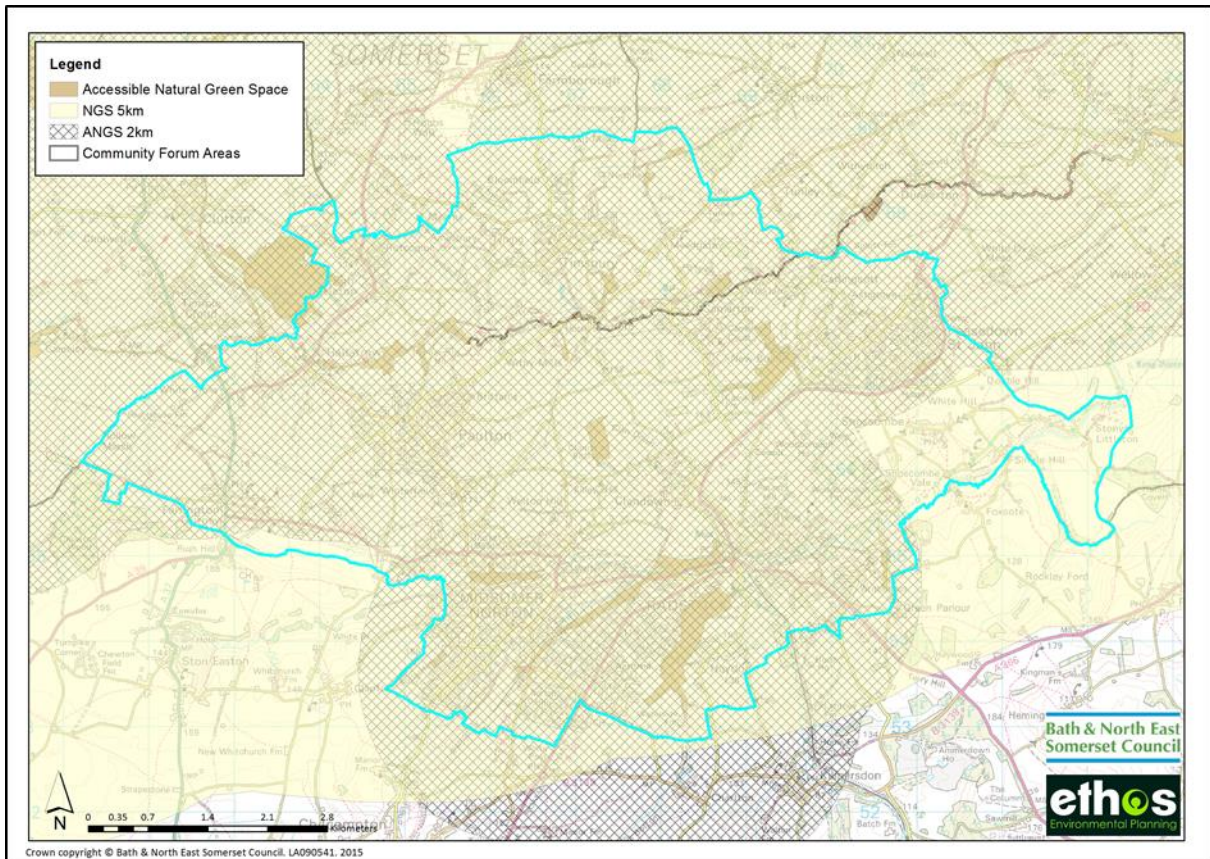
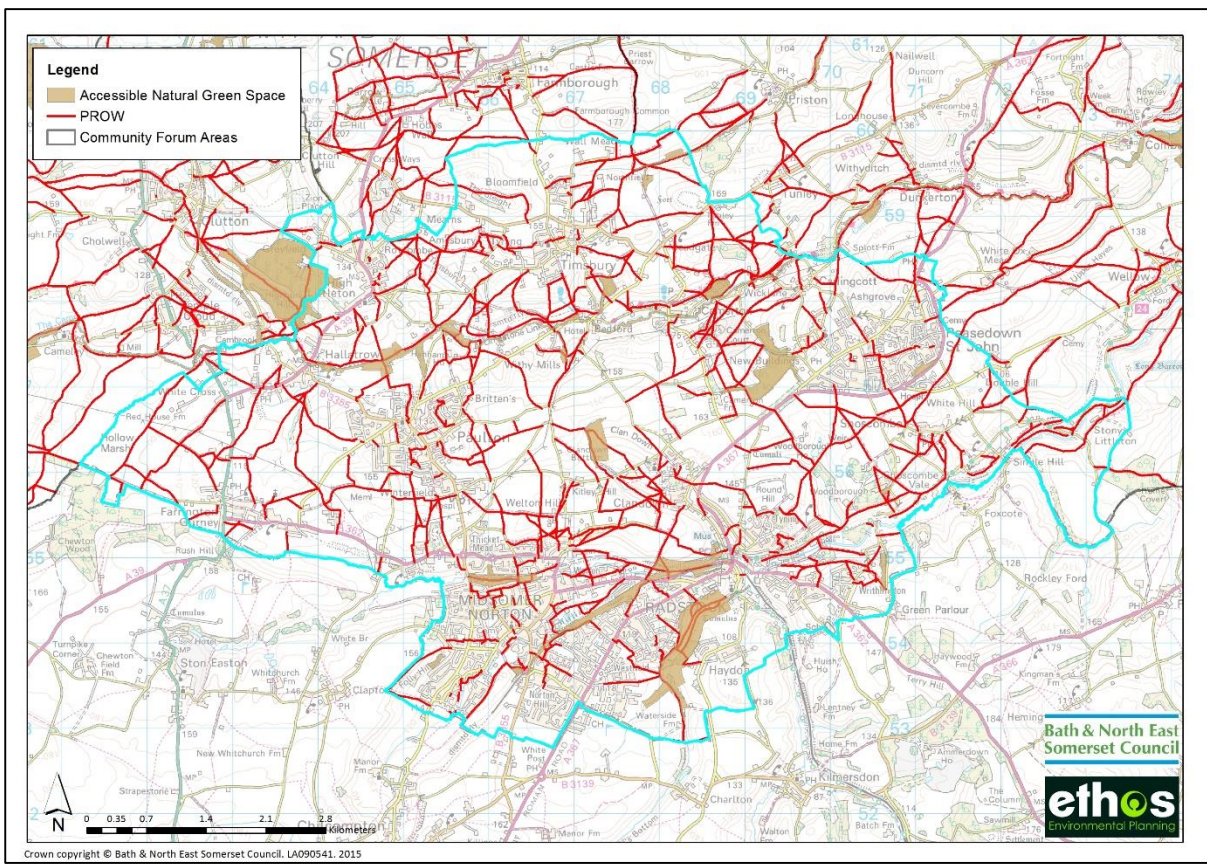


Figure 20 Public Rights of Way across the Somer Valley Study Area



5.0 Summary of quality issues and opportunities for Green Space

5.1 Introduction

This section provides a summary of the quality audit that was undertaken as part of the overall study. Following the initial mapping exercise, site visits were undertaken to assess the quality of sites. It was not possible to survey all sites due to access restrictions, namely certain private sports grounds and education sites. Other sites were also excluded due to limitations of resources, these included small amenity green spaces (<0.15 ha in size), and churchyards and cemeteries.

5.2 Audit methodology

Sites were visited and a photographic record made of key features, along with an assessment of the quality of the site. Quality was assessed using the following criteria which is based on the Green Flag Assessment¹:

- Access;
- Welcoming;
- Management and Maintenance;
- Healthy, safe and secure;
- Community Involvement.

Within each of these main assessment criteria were a number of sub criteria, for example, the Access criteria comprises the following sub criteria:

- **Access - entrances** Access suitable for all abilities;
- **Access - paths** Good access suitable for all abilities;
- **Access** Ease of access between external housing/streets and internal paths.

The details of the quality audit are held within the quality database. Within these area profiles, a summary of the sites included within the quality audit has been provided. Each site is listed and the following provided:

- Site name;
- A brief description of the site;
- Typology;
- Parish/Ward;
- Existing score/rank;
- Potential score rank

¹ <http://www.greenflagaward.org.uk/awards/green-flag-award/>

Existing score/rank

A rank from A – D has been given for the average existing total score as follows:

- The existing quality score of the site is totalled;
- This is divided by the number of criteria for which a score was given to give an average total score;
- The scores are ranked from A – D, where sites with rank ‘A’ are within the top 25% of quality, and sites with rank ‘D’ are in the bottom 25% of quality – i.e. sites with rank ‘A’ have the best existing quality, and sites with rank ‘D’ have the poorest quality.

Potential score/rank

A rank from A – D has been given for the average gap/potential score as follows:

- The potential quality score of the site is totalled;
- This is divided by the number of criteria for which a score was given to give an average potential score;
- The scores are ranked from A – D, where sites with rank ‘A’ are within the top 25% of potential improvement and sites with rank ‘D’ are in the bottom 25% of potential improvement – i.e. sites with rank ‘A’ have the most potential to be improved, and sites with rank ‘D’ have the poorest potential to improve.

5.3 Summary of priority sites

Appendix 1 provides a summary of all sites included within the audit. These are extracted from a more detailed audit database which has been made available to the council. This section provides a summary of priority sites i.e. those that have existing low quality (C or D ranked) but with high potential for improvement (A or B ranked). This does not mean that other sites will not be considered for improvement, particularly if very close to a development site, however, it does act as a starting point for prioritisation.

| | | Potential Score | |
|----------------------|----------|---|---|
| | | A | B |
| Existing Rank | D | <i>Poor quality, high potential</i> | <i>Poor quality, moderate potential</i> Jack’s Wood |
| | C | <i>Moderate quality, high potential</i> | <i>Moderate quality, moderate potential</i> Hillside Crescent Park and Rec Clapton Road Park and Rec Oliver Brooks Road Open Space Ecewiche Green Waterside and Westhill Gardens |

5.4 Site Hierarchies

The previous Green Space Strategy (2007) set out a hierarchy policy in order to help categorise the importance of sites (see Section 3.3.3 for more detail). Within this current study, the Destination and Neighbourhood hierarchy classifications have been taken forward, in order to help identify priority sites for improvement, in combination with the results from the quality audit. It is recognised that Destination and Neighbourhood sites will attract people from a wider area, and therefore enhancements to these sites, rather than provision of new open space may be the preferred option.

The table below includes sites within the Somer Valley Area that are either Destination or Neighbourhood sites.

Table 6 Site Hierarchies

| Site Name | Typology | Parish | Hierarchy |
|---|-----------------|-------------------|------------------|
| Somer Valley Adventure Play and Skatepark | Park and Rec | Midsomer Norton | Destination |
| Memorial hall And Social Club | Park and Rec | Farrington Gurney | Neighbourhood |
| High Littleton Park | Park and Rec | High Littleton | Neighbourhood |
| Staddlestones Play Area | Park and Rec | Midsomer Norton | Neighbourhood |
| Southfields Recreation Ground | Park and Rec | Radstock | Neighbourhood |
| Westhill Gardens Sport Club | Park and Rec | Westfield | Neighbourhood |
| Duchy Road Play Area | Park and Rec | Radstock | Neighbourhood |
| Roundhill Recreation Ground | Park and Rec | Radstock | Neighbourhood |
| Tynning Park Play Area | Park and Rec | Radstock | Neighbourhood |
| West Clewes Recreation Ground | Park and Rec | Midsomer Norton | Neighbourhood |
| Norton Hill Recreation Ground | Park and Rec | Westfield | Neighbourhood |
| Greenacres Play Area | Park and Rec | Midsomer Norton | Neighbourhood |

| | | | |
|---|--------------|-------------------|---------------|
| Clapton Road Play Area | Park and Rec | Midsomer Norton | Neighbourhood |
| Hillside Crescent Play Area | Park and Rec | Midsomer Norton | Neighbourhood |
| Britten's Hill Recreation Ground | Park and Rec | Paulton | Neighbourhood |
| Paulton Village Hall Recreation Ground | Park and Rec | Paulton | Neighbourhood |
| Paulton Miner's Welfare Recreation Ground | Park and Rec | Paulton | Neighbourhood |
| Conygre Hall Recreation Ground | Park and Rec | Timsbury | Neighbourhood |
| The Daglands Recreation Ground | Park and Rec | Camerton | Neighbourhood |
| Beacon Field Recreation Ground | Park and Rec | Peasedown St John | Neighbourhood |
| Miner's Welfare Recreation Ground | Park and Rec | Peasedown St John | Neighbourhood |

6.0 Future need for Green Space

This section of the report considers two factors related to proposed population growth within the study area:

1. The overall implications for green space provision from the predicted population growth for the whole of the study area;
2. A scenario demonstrating how green space requirements would be determined for an allocated site within the study area.

6.1 Overall impact on green space

6.1.1 Projected housing growth

The data published in the housing delivery trajectory as part of the Council's Housing & Employment Land Availability Assessment (HELAA) has been used to inform this section of the Somer Valley Area Profile. The housing trajectory (2011-2029) for The Somer Valley is **2470 units**. This figure has been used to calculate the required quantity of each typology in the Somer Valley Area as shown in the table below. It should be noted that the housing trajectory is a ball park figure.

The current provision figures have been taken from the 'Supply (ha)' column in Table 3. Requirements from developments has been calculated by dividing the provision standard for each typology by 1000 and then multiplying this by the approximate population growth, which for the Somer Valley area has been calculated as 5,681 (2470 x 2.3 (the 2011 Census average household size in the UK)).

6.1.2 Impact on green space

The table below has three rows showing:

1. **Current provision:** this is the current provision in hectares of green space against the Bath green space standards. Where minus figures are provided, there is a 'deficiency' in provision, where as all other figures show where there is 'sufficient' provision;
2. **Requirements from development:** This shows the amount of open space that would be required to meet the Bath green space standards from the anticipated population growth. For example an increased population of 5,432 people would result in a need for 1.63 hectares of allotment space (i.e. 0.3ha/1000 people);
3. **Situation if no on site provision:** This shows the theoretical potential impact on green space provision within the area if the proposed housing allocations do not provide any green space on site. The purpose of this is to demonstrate which types of green space are in most need of providing on site, and those typologies where perhaps on site provision is less critical.

Table 6 assessment of green space provision in Somer Valley Area

| | Allotments | Amenity Green Space | Parks and Recreation Grounds | Play Space (Children) | Play Space (Youth) | Natural Green Space |
|--|------------|---------------------|------------------------------|-----------------------|--------------------|---------------------|
| Current Provision (ha) | -6.33 | -7.53 | -23.92 | 0.48 | -0.38 | 310.35 |
| Requirements from developments (ha) | 1.70 | 1.70 | 7.39 | 0.28 | 0.17 | 5.68 |
| Situation if no on-site provision (ha) | -8.03 | -9.23 | -31.31 | 0.20 | -0.55 | 304.67 |

The anticipated population growth for the Somer Valley area will need to take into account the following in relation to green space:

- Increased pressure on the existing deficiency of **allotments**, exacerbating the shortfall to -8.03 hectares, demonstrating the importance of seeking on site provision for new allotments in the study area;
- Increased pressure on the existing deficiency of **amenity green space**, exacerbating the shortfall to -9.23 hectares, demonstrating the importance of seeking on site provision for new amenity green space in the study area;
- Increased pressure on existing **parks and recreation grounds** exacerbating the shortfall to -31.31 hectares, demonstrating the importance of seeking on site provision for new parks and recreation grounds where feasible. It is acknowledged that some developments will be too small to provide this type of green space on site, and as such opportunities for pooling developer contributions to improve the capacity of existing facilities to cope with the increased pressure must be sought;
- An identified sufficient supply of **children’s play space**, indicating that on site provision may not be necessary, and the priority should be to improve access to or improve quality to existing facilities within the local area of new development;
- Increased pressure on the existing deficiency of **youth play space**, exacerbating the shortfall to -0.55 hectares, demonstrating the importance of seeking on site provision for new youth play space in the study area;
- An identified sufficient supply of **natural green space**, indicating that this provision need not be provided on site. It is considered unlikely that many existing spaces would provide potential for meeting identified shortfall in other types of provision or for disposal, due to other designations and biodiversity issues associated with this type of space. However, certain natural green spaces may provide opportunity for creating natural play spaces, community growing areas (e.g. orchards).

It is intended that the above observations are used to form the basis of the strategy for the Somer Valley area in relation to Green Space and inform relevant planning decisions (see section 6.2), and work plans/priorities for the parks service.

6.2 Scenario – green space requirements from development in the Somer Valley study area

6.2.1 Current allocations in the study area

B&NES Planning Policy Team have provided information on the most up-to-date position regarding sites likely to be allocated in the Placemaking Plan that include an element of residential development (Table 7 below).

It should be noted that these are estimated capacities which may change as the Draft Plan preparation continues and through Member consideration.

Table 7: Likely housing allocations for the Somer Valley Area

| Site | Number of Residential Units |
|---|-----------------------------|
| Welton Bag Factory | 100 |
| Ryman Engineering Services | 0 |
| Radstock County Infants | 14 |
| Former St Nicholas Infants School | 5 |
| St Peter's Factory (Cobblers Way) | 81 |
| Timsbury (West of Southlands Drive) | 10 |
| Timsbury (Former Wheelers Block Works) | 25 |
| Timsbury (Adj St Mary's Primary School) | 15 |
| Farrington Gurney | 0 |

6.2.2 Scenario – Welton Bag Factory (allocation for 100 dwellings)

This section considers one of the allocated sites from the list above, and applies the green space standards and analysis of local provision to determine the need for green space resulting from the development. The scenario is meant as a means of demonstrating the decision making process, however, it is understood that many pressures are placed on development and green space is only one consideration. Therefore, the recommendations made in this scenario may be subject to change depending on other influences that arise during the site master planning and planning process. The scenario assumes an allocation of 100 dwellings with an increased population of 230 people.

Figure 21: Green space provision within the parish (Midsomer Norton) in relation to the allocated site

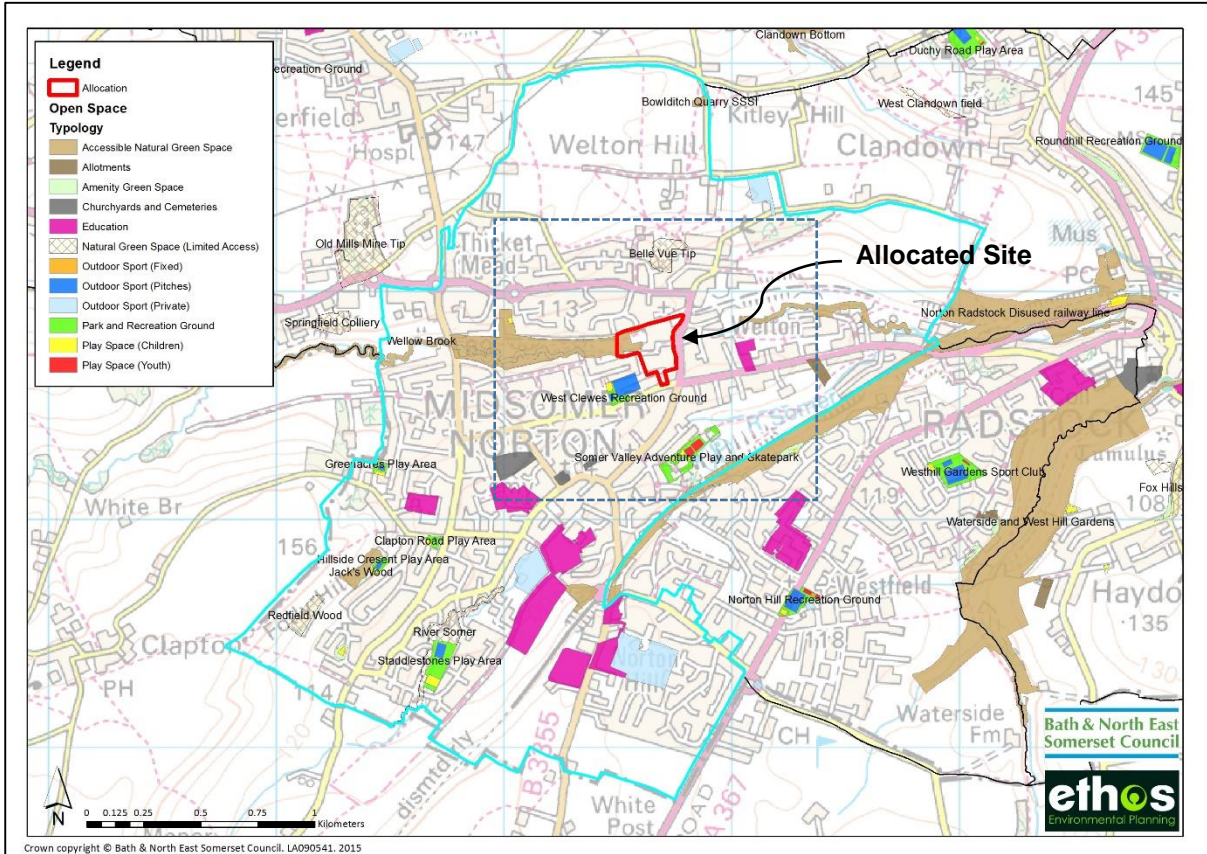
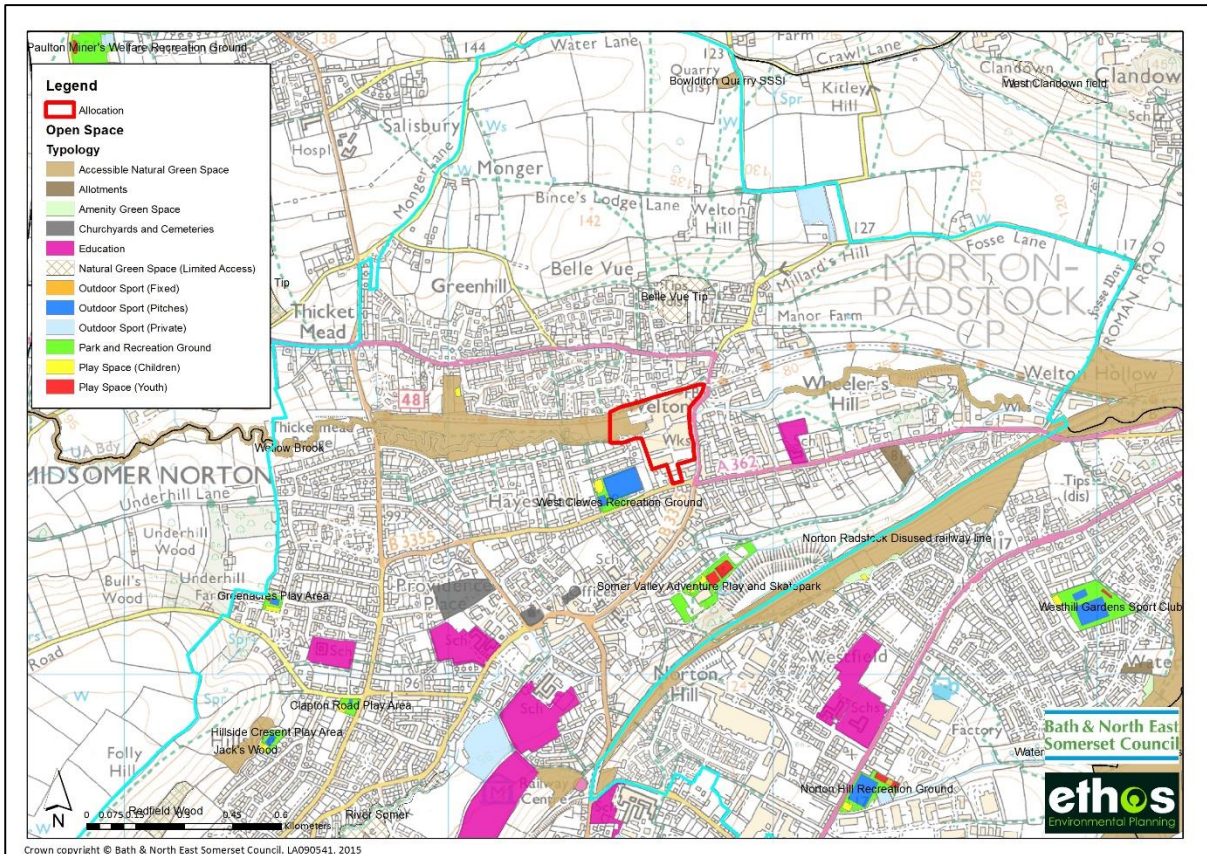


Figure 22: Green space provision within the local area in relation to the allocated site



6.2.3 Analysis of quantity provision in the area

The tables below show the provision of green space in the Somer Valley study area and in the parish within which the development is located (see explanation at 6.1.2).

Table 8 Provision of green space in the Somer Valley study area

| | Allotments | Amenity Green Space | Parks and Recreation Grounds | Play Space (Children) | Play Space (Youth) | Natural Green Space |
|--|------------|---------------------|------------------------------|-----------------------|--------------------|---------------------|
| Current Provision (ha) | -6.33 | -7.53 | -23.92 | 0.48 | -0.38 | 310.35 |
| Requirements from developments (ha) | 1.70 | 1.70 | 7.39 | 0.28 | 0.17 | 5.68 |
| Situation if no on-site provision (ha) | -8.03 | -9.23 | -31.31 | 0.20 | -0.55 | 304.67 |

Table 9 Provision of green space in Midsomer Norton Parish

| | Allotments | Amenity Green Space | Parks and Recreation Grounds | Play Space (Children) | Play Space (Youth) | Natural Green Space |
|--|------------|---------------------|------------------------------|-----------------------|--------------------|---------------------|
| Current Provision (ha) | -2.71 | -3.09 | -9.39 | 0.19 | -0.02 | 26.85 |
| Requirements from developments (ha) | 0.07 | 0.07 | 0.30 | 0.01 | 0.01 | 0.23 |
| Situation if no on-site provision (ha) | -2.78 | -3.16 | -9.69 | 0.18 | -0.03 | 26.62 |

6.2.4 Analysis of access to open space in the area

The following maps show the location of the allocated site (red square) in relation to the access standards for green space. This shows that there is sufficient access to all types of green space within the immediate vicinity of the development site, with the exception of amenity green space which falls below the standard. Access to natural green space also meets the standard (not shown on maps below, but see Figure 19).

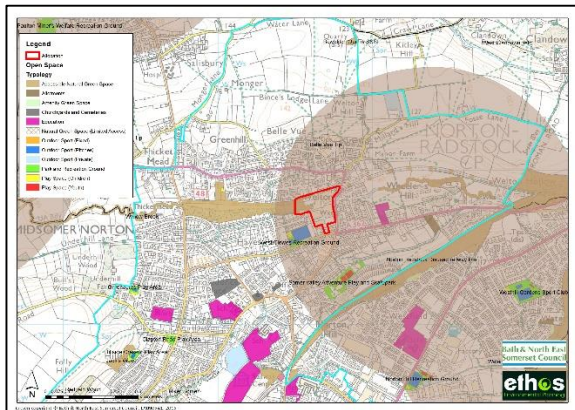


Figure 23 Allotments

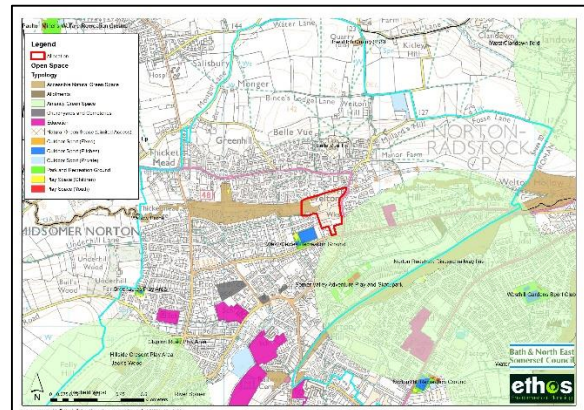


Figure 24 Amenity Green Space

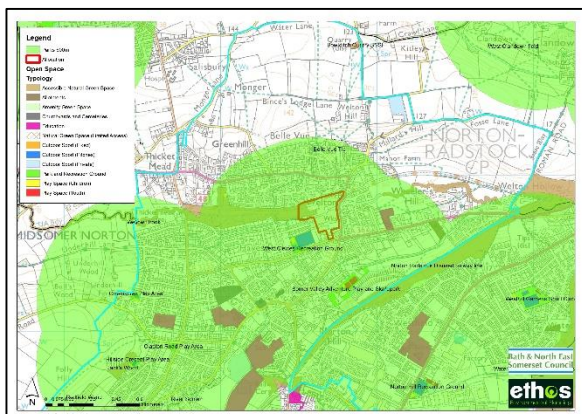


Figure 25 Parks and Recreation Grounds

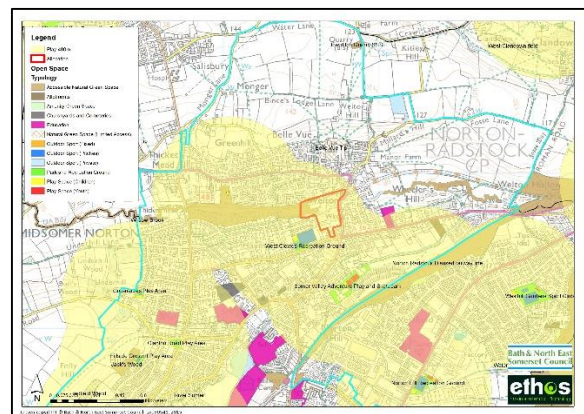


Figure 26 Children's Play Space

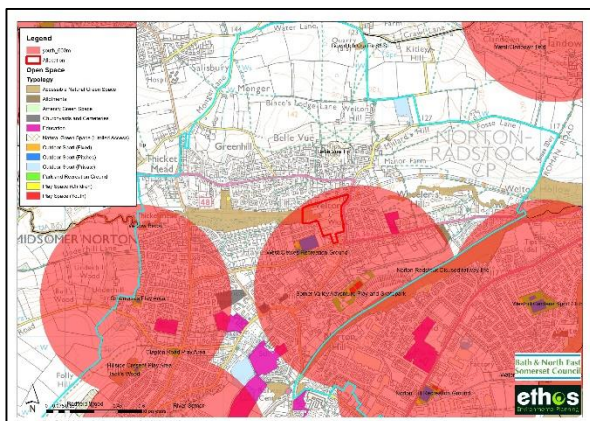


Figure 27 Youth Play Space

6.2.5 Assessment of quality of open space in the area

Figure 21 above shows the green space within the Midsomer Norton Parish. The table below shows the green spaces that were included within the quality audit, including a description, key improvements and a summary of the existing quantity score and its potential for improvement (see section 5.2 for scoring ranks).

Table 10 Summary audit of sites within Midsomer Norton

| Name | Typology | Description | Improvements | Existing quality score | Potential score |
|-------------------|-----------------|---|--|-------------------------------|------------------------|
| Hillside Crescent | Park and Rec | Small park and recreation ground with a children's play space for juniors and toddlers and an informal mini football pitch. | There is only one main entry/exit point and the other exit point is a small, muddy path into the woods which doesn't feel very safe. The park is difficult to find as it is located up a track with no signage and it is not visible from the street. There is only one bin and no dog bins, and there is some litter and dog fouling. There is no provision for teens. | C | B |
| Clapton Road | Park and Rec | A well overlooked park and rec with play space with equipment suitable for toddlers and juniors. There is a football goal post for informal football. | Although the site is completely fenced, the play space fencing is incomplete and despite signage, there were dogs in the play space. Dog fouling is an issue on this site and bins should be installed. There is no provision for teens and the existing equipment is a bit dated. There is space for more equipment and it is recommended that some additional items are installed. The access to the site is through two narrow gates over uneven ground - this does not give access to disabled users and should be improved. | C | B |

| | | | | | |
|--|--------------|---|---|---|---|
| Greenacres | Park and Rec | Park and Rec with play area for all ages. The equipment is generally in good condition. There is a kick wall with a small basketball court on the rear. There is also an informal mini football pitch, adjacent community centre and a small car park. | Dog fouling is an issue and dog bins should be installed. The kick wall is shabby and in need of repair and the missing basketball hoop on the rear should be replaced. It is recommended that a welcome sign and community notice board is installed at the site entrance. | C | C |
| West Clewes Recreation Ground | | Includes a senior football pitch (with floodlights and covered stand) which is home to Welton Rovers Football Club, and there is a mini football pitch used for training purposes and a clubhouse. A small children's play space is adjacent and there is a teen shelter. | There is no provision for teens other than the teen shelter in the children's play space. The mini football pitch used for training is extremely muddy. | B | C |
| Somer Valley Adventure Play and Skate Park | Park and Rec | Includes a diverse range of play for all ages including natural play. There is a large skate park which is in excellent condition and a floodlit MUGA, with CCTV which is also in good condition. | None | A | D |
| Staddlestones | Park and Rec | Large park and rec with senior football pitch, a large modern fenced play space with an | Could have benches installed in the middle of the site, Surface in MUGA would benefit from improving. | C | C |

| | | | | | |
|---------------------------------------|----------------------------------|--|--|---|---|
| | | additional fence around toddler play. Attractive view, bins, cycle rack, big oak tree. | | | |
| Oliver Brooks Road | Amenity Green Space | Small and well maintained site with toddler and junior play space. | Moss growing on safety surfacing and the play equipment is dated. There is no provision for teens and there is space for more equipment. | B | C |
| Radstock Road Allotments | Allotments | Allotments located off the main road with small parking area, fencing around the site, although no gate. The plots are in use and well maintained. There is a notice board for users. | Install gate at entrance | A | C |
| Jack's Wood | Natural Green Space (Accessible) | A muddy path leads from the rear of Hillside Crescent Play Area to the woods and a track from the road also leads to the woods. There is a lot of litter along the path and in vegetation. There is no signage and the path is very muddy. | Improve surface of path, install signage, install bins and reduce litter. | D | B |
| Norton Radstock Disused Railway track | Natural Green Space (Accessible) | A dual use cycle/footpath through open space with woodland. The path has a good tarmac surface and there is good signage with directions and distances to destinations. | Some sections are subject to littering and dog fouling and so bins should be installed in these areas. | B | C |

| | | | | | |
|--|----------------------------------|---|--|---|---|
| | | Along a section of river there is a picnic area with benches, flower beds and it is very pleasant. Both paths are in very good condition, there is appropriate signage and there is good provision of bins and dog bins. The site is aesthetically pleasing and offers high value for biodiversity. | | | |
| Northmead Road/Wellow Brook Cycle Path | Natural Green Space (Accessible) | This is a dual use cycle and footpath with a stone surface in good condition. There are lots of entry points from adjacent housing and the path is well used. There are streetlights in some places. | The site would benefit from the installation of signage indicating directions. | B | C |

The quality audit provides a snapshot of quality issues on a site, the main purpose to identify sites where there is potential for improvement, and to present an objective prioritisation of sites where improvement is needed.

The table above shows that the two recreation grounds, at Hillside Crescent and Clapton Road both score relatively low for existing quality “C”, and have good potential for improvement – scoring B. The natural green space at Jacks Wood also scores D and has good potential for improvement – B. Other sites have less priority, although there is opportunity to improve youth provision at West Clewes and Greenacres Park and Recs.

6.2.6 Requirements for open space from the development

The assessment of quantity, access and quality of open space above has been used to determine the likely requirements for green space resulting from the proposed development. The decision making process takes into account provision in both the local area and the wider Somer Valley study area. As already identified, the purpose of this assessment is to demonstrate the decision making process and factors that are taken into account when determining the requirements for green space from a particular development. The

recommendations and requirements in this report are not intended as a guide and the actual provision and requirements may well change as part of the detailed planning process.

The allocated site is for 100 dwellings which requires a total of 0.46ha of open space (excluding natural green space). Due to the limited size of the site and its proximity to West Clewes Park and Recreation Ground, it is considered that the most appropriate approach would be to provide a local open space with facilities for informal recreation comprising amenity/natural green space and an allotment or community growing area. It should also comprise a minimum of 0.01ha of youth play space. This would contribute towards the existing shortfall in these typologies. Although there is sufficient supply of children's play space, this may be required on site in order to reduce the gap in access to the north of the site. Suitable access from the site to the adjoining natural green space and Clewes Park and Recreation Ground should also be provided.

If it is not possible to provide on-site local green space, then alternatively a contribution to improve the quality of and access to adjoining/nearby parks and recreation grounds and natural green space would be required. This would need to include the provision of a minimum of 0.01ha youth play space e.g. within Clewes Park (or other suitable nearby alternative) and a minimum of 0.07 of allotments/community food growing e.g. at Northmead Road/Wellow Brook.

7.0 Summary of priorities for the area

This section considers the analysis of quality, quantity and access to green space across the study area drawing on previous sections within this report.

1. The area has an existing shortfall of Allotments, Amenity Green Space, Parks and Recreation Grounds and Youth Play Space. There is sufficient Children's Play Space and Natural Green Space;
2. Access to the different types of green space varies across the area and is very sporadic due to the dispersed nature of settlements. Creating 'green corridors' that link green spaces in the urban areas and the surrounding countryside will be important in providing and/or improving access for people and wildlife. Access to open space will need to be considered on a case by case basis (as per the example in section 6.2).
3. The priorities for on-site provision through new development is for Allotments, Amenity Green Space, Parks and Recreation Grounds and Youth Play Space, which would be considered on a case-by-case basis (as in the scenario provided in section 6.2).
4. Although there is sufficient supply of children's play space for the Keynsham Area as a whole, these spaces are situated in the main settlement areas and therefore access across the area is sporadic. Therefore, the on-site provision of new children's play space should be considered at sites where these could help reduce gaps in access.
5. There is sufficient natural green space in the area. These spaces could provide opportunities for alternative green space uses, for example creating allotments or community growing areas.
6. Where feasible, opportunities for on-site provision should be sought, however, the likely housing indications (table 7) indicate that there are few developments of a size which would justify significant levels of on-site provision. Therefore, the pooling of contributions to improve the quality and the capacity (and access to) existing facilities is a priority.

APPENDIX I SUMMARY SCORES FROM QUALITY AUDIT

Parks and Recreation Grounds

| <u>Assessment for Parks and Recreation Grounds</u> | | | | GENERAL INFORMATION | | RANK | |
|--|-------------------------------|-----------------------------------|--------------|--|---|--------------------------|------------------------------------|
| | | | | | Comments and priorities for improvement on the site overall | Existing score (average) | Site Potential (average Gap Score) |
| ETHOS Ref | Site Name | Parish | Forum Area | General description of site | | | |
| HIGH-HIGH-0003-0000 | High Littleton Park and Rec | High Littleton | Somer Valley | Rural park and rec with muga, kickwall. Senior football pitch | Install a more welcoming sign upon the entrance to the car park. Play space had dated apparatus and as a result doesn't encourage play. | C | D |
| HIGH-FARR-0002-0000 | Memorial Hall And Social Club | Farrington Gurney | Somer Valley | Village rec and memorial hall with play space, senior football pitch and private tennis courts. | Only one litter bin on site which is in the corner of play space. At least one more needed throughout the site. Sign not welcoming on entrance and doesn't show park name. No teen facilities only shelter. Damage to swing set. | C | D |
| MIRW-MIDS-0001-0000 | Hillside Crescent | Midsomer Norton and Redfield Ward | Somer Valley | Small park and recreation ground with a children's play space for juniors and toddlers mixed, with equipment including climbing frame, swings and bouncy toys. There are benches in the play area and a small welcome sign. There is just one bin for the site and no dog bins. There is an informal mini football pitch and part of it has a felt surface over it. A muddy path leads from the site to the adjacent woodland. | There is only one main entry/exit point and the other exit point is a small, muddy path into the woods which doesn't feel very safe. The park is difficult to find as it is located up a track with no signage and it is not visible from the street. There is only one bin and no dog bins, and there is some litter and dog fouling. There is no provision for teens. | C | B |

| | | | | | | | |
|---------------------|----------------------|-----------------------------------|--------------|--|--|---|---|
| MIRW-MIDS-0002-0000 | Clapton Road | Midsomer Norton and Redfield Ward | Somer Valley | Clapton Road Play Area is well overlooked, and has a play space with equipment suitable for toddlers and juniors mixed including bouncy toys, swings, large slide and climbing frame. There is a football goal post with a patch of felt in front of it for informal football. | Although the site is completely fenced, the play space fencing is incomplete and despite signage, there were dogs in the play space. Dog fouling is an issue on this site and bins should be installed. There is no provision for teens and the existing equipment is a bit dated. There is space for more equipment and it is recommended that some additional items are installed. The access to the site is through two narrow gates over uneven ground - this does not give access to disabled users and should be improved. | C | B |
| MIRW-MIDS-0004-0000 | Greenacres Play Area | Midsomer Norton and Redfield Ward | Somer Valley | Greenacres Play Area contains play for all ages, with a children's play space with equipment suitable for juniors and toddlers mixed, including slide, swings, climbing frame, roundabout and big swing. The equipment is generally in good condition. There is a kick wall with a small basketball court on the rear, however the basketball hoop is missing. There is an informal mini football pitch, adjacent community centre and a small car park. | Dog fouling is an issue and dog bins should be installed. The kick wall is shabby and in need of repair and the missing basketball hoop on the rear should be replaced. It is recommended that a welcome sign and community notice board is installed at the site entrance. | C | C |

| | | | | | | | |
|---------------------|--|----------------------------|--------------|---|---|----------|----------|
| MINW-MIDS-0016-0000 | West Clewes Recreation Ground | Midsomer North Ward | Somer Valley | West Clewes Recreation Ground has a senior football pitch (with floodlights and covered stand) which is home to Welton Rovers Football Club, and there is also a mini football pitch used for training purposes and a clubhouse. A small children's play space is adjacent which has equipment suitable for toddlers and juniors mixed including climbing frames and swings and there is a teen shelter. | There is no provision for teens other than the teen shelter in the children's play space. The mini football pitch used for training is extremely muddy. | B | C |
| MINW-MIDS-0023-0000 | Somer Valley Adventure Play and Skate Park | Midsomer Norton North Ward | Somer Valley | Somer Valley Adventure Play and Skate Park has a huge range of play for all ages. For juniors and toddlers there is equipment within sandpits and free standing apparatus. Much of the equipment is made out of tree trunks and natural resources which is very effective and offers high value for play. There is a large skate park which is in excellent condition and a floodlit MUGA, with CCTV which is also in good condition. | No issues | A | D |
| PAUL-PAUL-0002-0000 | Paulton Miner's Welfare Recreation Ground | Paulton | Somer Valley | Paulton Miner's Welfare Recreation Ground has a children's play space with equipment suitable for juniors and toddlers mixed, including climbing frame, monkey bars and big swing. There is a bmx track with a grit surface which is muddy in places. A private bowls club | Dog fouling is an issue despite dog bins and lots of signage, and dogs were being exercised over the site off the lead. The bmx track has some muddy patches and the surface could be improved. The teen shelter is dark and unappealing and in need of updating. The children's play space | B | C |

| | | | | | | | |
|---------------------|----------------------------------|---------|--------------|--|---|---|---|
| | | | | (Paulton Bowls Club) has one bowling green and a pavillion on site with no public access. There is a concrete teen shelter which has lots of graffiti on it. | is dated, has low play value, is not fenced so dogs are not excluded, and there is space for more equipment. There are no benches or bins specifically around the play space. | | |
| PAUL-PAUL-0003-0000 | Paulton Village Hall | Paulton | Somer Valley | Paulton Village Hall Recreation Ground has two MUGA which are in excellent condition; the larger one is floodlit with tennis nets and the smaller one has basketball hoops. In the amenity grass there is a single football goal post but no pitch. There is a children's play space with equipment suitable for juniors and toddlers including seesaw, climbing frame, swings and it is modern, with high play value and in good condition. | It is recommended that a tarmac path is installed between the two MUGAs as currently the strip of grass shows signs of frequent use and is now muddy and difficult to walk along. Otherwise, the site is well managed and there are no further recommendations. | A | D |
| PAUL-PAUL-0010-0000 | Britten's Hill Recreation Ground | Paulton | Somer Valley | There is a small park and recreation ground located off Britten's Hill which consists of a small children's play space which equipment suitable for toddlers: climbing frame and slide. The site is located at the top of a hill with access up a grass slope or by two flights of steps. The view from the park is very nice, although it is not very overlooked. There is an informal mini football pitch and mature trees. | There is moss beneath the play equipment and it is recommended that the surface is improved. There is no welcome sign, and no signage at all leading people to the park, and people are unlikely to find it in passing. The play equipment is dated, and there is no provision for juniors or teens. There is no disabled access to the site, just a grassy slope and two flights of steps. It is recommended that a proper surface is installed into the grass slope to make it accessible for everyone. | C | C |

| | | | | | | | |
|---------------------|--|----------------------|--------------|--|---|---|---|
| TIMS-TIMS-0006-0000 | Conygre Hall | Timsbury | Somer Valley | Conygre Hall Recreation Ground is a large park which contains two football pitches (one junior and one senior), a cricket pitch, a floodlit MUGA in good condition, a basketball hoop/kick wall and a children's play space with equipment suitable for juniors and toddlers mixed including zip line, swings, slide, climbing frames and roundabouts. The equipment is modern and offers high play value. | There is some moss and mud beneath play equipment which could be improved. There is evidence of dog fouling despite lots of signs and bins. The senior football pitch is very muddy and the football shelters are dated and could do with up-grading. | B | D |
| BAWW-CAER-0001-0000 | The Daglands Recreation Ground | Bathavon West Ward | Somer Valley | The Daglands Recreation Ground contains a range of play equipment suitable for juniors and toddlers including zip line, bouncy toys, slide, swings, big swing and roundabout. There is an informal mini football pitch, a teen shelter and a bmx track which is overgrown with grass. | There is evidence of dog fouling despite signs and dogs were being exercised off the lead on the football pitch; dog bins should be installed. The bmx track is in very poor condition, with lots of grass overgrown and little trace of the original surface. There is no welcome sign and there are no signs leading people to the park; the only access is along a narrow alley and people passing wouldn't find it. | C | D |
| PEAS-PEAS-0001-0000 | Miner's Welfare Recreation Ground, Peasedown | Peasedown Saint John | Somer Valley | The Miner's Welfare Recreation Ground in Peasedown Saint John has a senior football pitch which is fenced with seating and is used by Peasedown Athletic Football Club. There is a large area of amenity grass for informal football as well as a bmx track and children's play space which has equipment suitable for juniors and toddlers | The surface of the bmx track is grit and is potentially slippery. There is some dog fouling despite the bins and signage. It is recommended that a welcome sign with a community notice board is installed. | B | D |

| | | | | | | | |
|---------------------|--------------------------------|----------------------|--------------|--|---|----------|----------|
| | | | | mixed such as large climbing tower with fireman's pole, slide, swings, roundabout and big swing seat. There is also a kick wall/basketball hoop which is in good condition. | | | |
| PEAS-PEAS-0009-0000 | Beacon Field Recreation Ground | Peasedown Saint John | Somer Valley | Beacon Field Recreation Ground is a large park with three children's play areas for all ages with equipment including seesaw, tyre swing, fitness equipment, kickwall and basketball hoop, swings, complex climbing frame and bouncy toys. The equipment is interesting, offers high play value and is in excellent condition. There is a large area of amenity grass for informal games and sports. | There is a small amount of litter, however there are sufficient bins. It is recommended that a proper welcome sign is installed with a community notice board. A sign was noted regarding a potential proposed skate park. | B | D |
| RADS-RADS-0005-0000 | Southfields Recreation Ground | Radstock | Somer Valley | Southfields Recreation Ground is home to Radstock Town Football Club and has a senior football pitch with floodlights, fencing, covered stand, clubhouse and changing rooms. There is a children's play space with equipment suitable for toddlers with sandpit, slide and swings which is fenced. There is a zip line suitable for juniors and some logs laid in the ground in the shape of animals as an informal hang out space. There is a skate ramp and part grit, part tarmac bmx track | Dog fouling is an issue, despite the provision of bins there is evidence of dog fouling all across the site. Litter is also an issue but to a lesser extent. The football clubhouse is a bit run down, particularly from the rear, and is set in an area of overgrown scrub which could be improved. The children's play space is in good condition, but has low play value and there is very little provision for juniors. | B | C |

| | | | | | | | |
|---------------------|----------------------------|-----------|--------------|--|--|----------|----------|
| | | | | <p>which are both in good condition. The view from the park is very nice and there are benches and paths throughout.</p> | | | |
| WEFI-WEFI-0009-0000 | Westhill Recreation Ground | Westfield | Somer Valley | <p>Westhill Recreation Ground consists of two football pitches (one senior and one mini) which are both quite muddy and have poor drainage. There is a play space with equipment suitable for juniors and toddlers mixed including climbing tower, swings, big swing seat, balance swing bridge, bouncy toys and a teen shelter. The equipment is in good condition and has high play value, however the surface beneath is mainly grass. There is a bmx track which is in good condition, with a part grit and part tarmac surface.</p> | <p>There is evidence of dog fouling across the site despite bins and signage, and dogs were being exercised off the lead over the football pitches. There are a few wet patches in the bmx track and the football pitches are both wet and muddy. The adjacent Westhill Gardens Sports Club appeared a bit run down on the exterior. It is recommended that a welcome sign is installed with a community notice board.</p> | B | C |

| | | | | | | | |
|---------------------|-------------------------------|-----------|--------------|---|--|----------|----------|
| WEFI-WEFI-0003-0000 | Norton Hill Recreation Ground | Westfield | SomerValley | Norton Hill Recreation Ground contains a children's play space with a range of equipment suitable for juniors and toddlers mixed including roundabout, climbing frames, swings, seesaw, bouncy toys and outside of the fenced play space was a big swing seat which had a poor surface beneath it. The equipment in the fenced play space is in good condition, has good surface beneath it and has good play value. There is a MUGA which has an excellent surface, yet poor fencing with holes all around it. There is an area for basketball with a permanent table tennis table and a square area of gravel which is possibly used for informal bowls - the provision for teens is excellent. | There is evidence of dog fouling and dogs being exercised across the football pitch off the lead. There is litter across the site and within the children's play space. The football pitch is very uneven and on a slope. The whole site is quite muddy and it would be beneficial to install proper paths in well used areas such as entrances to the play space. | B | D |
| RADS-RADS-0002-0000 | Tyning Park Play Area | Radstock | Somer Valley | Small Park and rec with a fenced Children's play space for toddlers, climbing frame for junior play informal minis pitch and a Bmx track. | Poor Bmc x track in mud and grass should be improved, Very well overlooked, good accessibility, bins fenced no dog bins on site but dogs are excluded, play Climbing tower, spring toys, swings, good, informal mini football, community notice board should be installed. | B | D |
| RADS-RADS-0004-0000 | Duchy Road Play Area | Radstock | Somer Valley | Small park and rec on the edge of Radstock. Site has junior play space with a small variety of apparatus and an informal football pitch which isn't marked | Install bin and bench in play, space for more equipment, low play value currently, install dog bins and more benches around site. Pitch has a severe slope, uneven, no lines. | C | C |

| | | | | | | | |
|---------------------|-----------------------------|-----------------|--------------|---|---|---|---|
| | | | | out and small muga with a kick wall at one end. | | | |
| MIRW-MIDS-0032-0000 | Staddlestones | Midsomer Norton | Somer Valley | Large park and rec with senior football pitch, a large modern play space with a Welcome sign, fenced, dogs excluded, junior, teen and additional fence around toddler play, a little overlooked, people passing, nice view, bins, cycle rack, big oak tree. | Could have benches installed in the middle of the site, Surface is poor in the MUGA, would benefit from better surface. | C | C |
| RADS-RADS-0003-0000 | Roundhill Recreation Ground | Radstock | Somer Valley | Recreation ground with adult football, senior football, car park and storage building. | Building is in poor condition and there was lots of litter in the vicinity at time of visit. Litter bins needed. Old goal posts were left in the hedge and the railings along the car park were rusty. The car park was potholed and the signage old and unwelcoming. Posts next to entrance gates could have new sign installed. | C | A |

Amenity Green Space and Play Space

| <u>Assessment for Play Space</u> | | | | Comments and priorities for improvement on the site overall | RANK | |
|----------------------------------|----------------------|----------|----------|--|--------------------------|------------------------------------|
| | | | | | Existing score (average) | Site Potential (average Gap Score) |
| ETHOS Ref | Site Name | Parish | Ward | | | |
| CLUT-CLUT-0006-0000 | Burchill Close | Clutton | Clutton | Play value and condition of equipment could be improved. | D | D |
| RADS-RADS-0026-0000 | Tom Huyton Play Park | Radstock | Radstock | Tom Huyton Play Park contains a huge range of play equipment suitable for juniors and toddlers. Equipment includes large climbing towers with tunnel slides, several other climbing frames, roundabouts, seesaws, swings, zip line and the equipment is modern, interesting and offers high play value. There are toilets adjacent, a car park and the whole play area is fenced with dogs excluded. Two gates are missing of the hinges and there is one swing missing in the western end of the site. There are bins, benches and the site is well used. | A | D |

| <u>Assessment for Amenity Green Space (and Play Space where provided)</u> | | | | General Description | Comments and priorities for improvement on the site overall | RANK | |
|---|---------------|-----------|--------------|--|---|--------------------------|------------------------------------|
| | | | | | | Existing score (average) | Site Potential (average Gap Score) |
| ETHOS Ref | Site Name | Parish | Forum Area | | | | |
| WEFI-WEFI-0011-0000 | Linden Close | Westfield | Somer Valley | Small paths of amenity grass used for exercising dogs, and is full of dog fouling. | Installation of dog bins to reduce the dog fouling. | D | C |
| RADS-RADS-0013-0000 | Waterloo Road | Radstock | Somer Valley | Amenity grass area with cycle route passing through. There is signage for cyclists with directions to destinations. There are no issues. | Potential to improve biodiversity value. | B | D |

| | | | | | | | |
|---------------------|----------------------------|-----------------------------------|--------------|--|---|---|---|
| MIRW-MIDS-0020-0000 | Oliver Brooks Road | Midsomer Norton and Redfield Ward | Somer Valley | Small well maintained amenity green space with junior play space in the centre. This is a play area with equipment suitable for toddlers and juniors with equipment including swings, bouncy toys, seesaw, climbing frame and slide. | Play space has some issues with moss and the play equipment is dated. There is no provision for teens and there is space for more equipment. | B | C |
| PEAS-PEAS-0004-0000 | Frederick Avenue | Peasedown | Somer Valley | Large amenity green space with few scattered children s play apparatus throughout site. | Play apparatus is of a poor standard and doesn't encourage play. Litter bins are needed around site as litter has become an issue within the site. Play space has no perimeter fencing and no seating for any supervision. | D | C |
| PEAS-PEAS-0010-0000 | Eckweek | Peasedown | Somer Valley | Small amenity green space next to a church yard. Amenity space has small junior play space with basic apparatus. | Play space is very dated and doesn't encourage play | C | C |
| WEFI-WEFI-0013-0000 | Shakespeare Road Play Area | Westfield | Somer Valley | Amenity green space adjacent to natural green space. Shakespeare Road Play Area contains a limited amount of equipment suitable for juniors and toddlers including slide, swings and bouncy toys. It is fenced with bins and a welcome sign and there is a nice view. | The play value is low and there is no provision for teens, with some space for additional equipment. It is recommended that benches are installed. | C | C |
| RADS-RADS-0008-0000 | Manor Copse Play Area | Radstock | Somer Valley | Small play area surrounded by a small area of amenity green space. Manor Copse Play Area contains play equipment suitable for juniors and toddlers including swings, slide and bouncy toys, and a basketball hoop set in a large area of tarmac. There is a teen shelter which is full of litter, the site is well overlooked and there are three entrances. The whole site is either hard-standing or surface | It is recommended that some soft landscaping is put in; for example some raised beds could be used. The litter should be removed from the teen shelter and a bin installed adjacent. The play equipment is a bit dated and the tarmac beneath the basketball hoop is quite mossy. | C | C |

| | | | | | | | |
|---------------------|----------------------|----------|--------------|---|---|----------|----------|
| | | | | beneath the play equipment and there is no natural or soft landscape. | | | |
| RADS-RADS-0007-0000 | Old Road Play Area | Radstock | Somer Valley | Large amenity green space with small children's play space and single goal posts. Old Road Play Area contains play equipment suitable for juniors and toddlers including seesaw, large slide, two swings and a nice climbing frame. | Car park is prone to flooding and has some areas which are very muddy. Goal posts has problem areas. There is a lot of litter on site and the bins are very full. There is grass growing through the surface beneath the play equipment. Generally the play equipment is in good condition, but some of the paint is peeling on the picnic benches. | B | D |
| RADS-RADS-0010-0000 | Groveswood Play Area | Radstock | Somer Valley | Small amenity green space adjacent to accessible natural green space. Site has basic play space with few apparatus but site work is to be under taken soon. Groveswood Play Area contains play equipment suitable for juniors and toddlers mixed including slide, climbing tower, swings and seesaw. Some of the equipment is more modern (seesaw and climbing tower) and there is a sign saying that new play equipment is being installed. It is unclear whether this has already taken place | There is potential for more play equipment or some provision for teens as currently there is none. There is a lot of grass growing through the surface beneath the equipment as well as moss and mud; this should be improved. Informal path between play space and accessible natural green space could be resurfaced. | C | D |

| | | | | | | | |
|---------------------|---------------------------|----------|--------------|---|--|---|---|
| RADS-RADS-0011-0000 | Kilmersdon Road Play Area | Radstock | Somer Valley | Small amenity green space with childrens play space in middle of housing estate. Kilmersdon Road Play Area contains a small amount of equipment suitable for juniors and toddlers mixed including slide, swings, roundabout and bouncy toys. There is a bin and welcome sign. | Small play space with very little value for play. Sites size limits apparatus being added to site so any improvements would involve removing some older apparatus. Impact flooring is covered in moss. There are no benches and installation of a bench would be beneficial. There is low play value and no provision for teens, however there is no space for any additional equipment. | C | D |
|---------------------|---------------------------|----------|--------------|---|--|---|---|

Allotments

| THIS IS THE ASSESSMENT FORM FOR ALLOTMENTS AND SMALL HOLDINGS | | | | General Description | Comments and priorities for improvement on the site overall | RANK | |
|---|--------------------------|-------------------|--------------|---|---|--------------------------|------------------------------------|
| | | | | | | Existing score (average) | Site Potential (average Gap Score) |
| ETHOS Ref | Site Name | Parish | Area Forum | | | | |
| HIGH-FARR-0002-0000 | Sunnyside allotments | Farrington Gurney | Somer Valley | large allotments | Good Allotments well maintained and used regularly. Chickens had escaped a pen during site visit but this is due to personal lot management | A | D |
| HIGH-FARM-0004-0000 | Ham lane allotments | Farrington Gurney | Somer Valley | Small allotments | Large allotments used regularly and had many people tending to their lots during audit. | B | D |
| MINW-MIDS-0019-0000 | Radstock Road Allotments | Midsomer Norton | Somer Valley | Allotments located off the main road with small parking area, fencing around the site, although no gate. The plots are in use and well maintained. There is a notice board for users showing evidence of community. | Install gate at entrance | A | C |
| TIMS-TIMS-0007-0000 | Lippiatt Lane Allotments | Timsbury | Somer Valley | The allotments are located down a country lane and there is off street parking available. The site is well used, and in good condition, with locked gates preventing unauthorised access. | None | A | D |

| | | | | | | | |
|---------------------|------------------------------------|-----------|--------------|--|---|---|---|
| PEAS-PEAS-0014-0000 | Braysdown Lane Allotments | Peasedown | Somer Valley | The allotments have a locked gate and fencing all around which is in good condition, although it would be easy to climb over the gate. The site is in full use and is well maintained. | None | A | D |
| WEFI-WEFI-0014-0000 | Westfield Allotment Garden Society | Westfield | Somer Valley | The allotments have fencing all around the perimeter with a locked gate. There is a private car park for users and the allotments are well used and well maintained. In the car park there are raised beds and a notice board for users with evidence of community activity. | None | A | D |
| RADS-RADS-0009-0000 | Haydon Allotments | Radstock | Somer Valley | The allotments have fencing all around the perimeter which is in good condition, however it is quite low and easy for people to climb over to gain unauthorised entry. There is a notice board, welcome sign, small car park and all the plots are in use. | None | A | D |
| PAUL-PAUL-0017-0000 | Orchard Road Allotments | Paulton | Somer Valley | Even after site visit it is unclear whether these are allotments or a private garden, | Site needs better fencing around the perimeter and signs placed upon the entrances. | D | A |

Private Sports Grounds

| | | | General Description |
|---------------------|--|-------------------|--|
| ETHOS Ref | Site Name | Parish | |
| PAUL-PAUL-0008-0000 | Paulton Rovers Football Club | Paulton | The site is home to Paulton Rovers Football Club, and facilities include a senior football pitch which is floodlit, has a spectators stand and is in excellent condition. There is a large clubhouse and car park. |
| PEAS-PEAS-0002-0000 | Peasedown Cricket and Croquet Club | Peasedown St John | The site is home to Peasedown Cricket Club and a croquet club. There is one cricket pitch with a pavilion and areas for croquet as well as private football pitches. There is a locked gate and no public access. |
| WEFI-WEFI-0004-0000 | Norwest Bowling Club | Westfield | The site is home to Norwest Bowling Club and consists of one bowling green in very good condition, with floodlights, a private car park, good fencing all around with no public access. There is also a club house. |
| MIRW-MIDS-0011-0000 | Norton Hill Sports Centre | Midsomer Norton | Norton Hill Sports Centre is used by the adjacent Norton Hill School and Sixth Form and is also available for public use. The site is well managed and well used and there are no issues. Facilities include Leisure Centre, ATP, rugby and football pitches. |
| MIRW-MIDS-0009-0000 | Midsomer Norton Cricket Club | Midsomer Norton | Midsomer Norton Cricket Club has one cricket pitch, practise nets, scoreboard, clubhouse and parking area. There is no public access, and the site appears to be in excellent condition. |
| WEFI-WEFI-0002-0000 | Prattens Bowls Club | Westfield | Prattens Bowls Club has one bowling green (in excellent condition), a clubhouse and a private car park. There is no public access and there is a field at the rear which has tall fencing as if it had previously been used for cricket, however there is no signage and no information online to confirm this. There was locked fencing by this area. |
| PAUL-PAUL-0007-0000 | Purnell Sports and Social Club Private | Paulton | Purnell sports club with private football pitch, bowls pitch and private tennis club |

Accessible Natural Green Space

| THIS IS THE ASSESSMENT FORM FOR NATURAL AND SEMI-NATURAL GREENSPACE | | | | General Description | Summary of potential improvements or opportunities for the site | RANK | |
|---|--------------------|------------------------------|--------------|--|--|--------------------------|------------------------------------|
| | | | | | | Existing score (average) | Site Potential (average Gap Score) |
| ETHOS Ref | Site Name | Parish | Forum Area | | | | |
| PEAS-PEAS-0021-0000 | N/A | Peasedown St John | Somer Valley | Small woodland between farmland. Prow going through it adjacent woodlands are fenced off with barb wire. | Site is very small site and is very secluded, could do with better signage | D | D |
| RADS-RADS-0022-0000 | Writhlington Combe | Radstock | Somer Valley | Small woodland with prow going through it. | None | C | D |
| MIRW-MIDS-0026-0000 | Jack's Wood | Midsomer Norton And Redfield | Somer Valley | A muddy path leads from the rear of Hillside Crescent Play Area to the woods and a track from the road also leads to the woods. There is a lot of litter along the path and in vegetation. There is no signage and the path is very muddy. | Improve surface of path, install signage, install bins and reduce litter. | D | B |
| MINW-MIDS-0017-0000 | Northmead Road | Midsomer Norton North | Somer Valley | This is a dual use cycle and footpath with a stone surface in good condition. There are lots of entry points from adjacent housing and the path is well used. There | The site would benefit from the installation of signage indication directions. | B | C |

| | | | | | | | |
|---------------------|---------------------------------|-------------------|--------------|--|--|----------|----------|
| | | | | are streetlights in some places. | | | |
| PEAS-PEAS-0008-0000 | Ecewiche Green | Peasedown St John | Somer Valley | Ecewiche Green is an area of green space with footpaths, trees, hedgerows and picnic benches overlooking a nice view. There is poor signage, lots of litter and dog fouling - it is recommended that bins are installed. | There is poor signage, with algae covering signs so it is hard to read. There is a lot of litter, especially in the hedges and more bins should be installed, and dog fouling is also an issue. | C | B |
| RADS-RADS-0018-0000 | Waterside and West Hill Gardens | Radstock | Somer Valley | Open space with a mixture of woodland and fields used for walking, cycling and exercising dogs. | The paths are very muddy and in places the surface is very uneven with large rocks sticking out of the ground. At one of the entrances there is a big drop in the path where the tarmac surface stops. There is a gate which is no longer used and has barbed wire sticking out of it. There is dog fouling, no dog bins, lots of litter especially in the hedgerows and vegetation and no litter bins. Bins should be installed and improvements to the path surface. | C | B |

| | | | | | | | |
|---------------------|--|-----------------------|-----------------|--|------|---|---|
| MINW-MIDS-0029-0000 | Radstock Linear Park Cycle and Walkway (Disused Railway) | Midsomer Norton North | Somerset Valley | <p>The Radstock Linear Park Cycle and Walkway is a well-used accessible natural green space in Radstock. There is a gravel/mud footpath through trees and a tarmac cycle path following the same course. Along a section of river there is a picnic area with benches, flower beds and it is very pleasant. Both paths are in very good condition, there is appropriate signage and there is good provision of bins and dog bins. The site is aesthetically pleasing and offers high value for biodiversity.</p> | None | B | D |
|---------------------|--|-----------------------|-----------------|--|------|---|---|