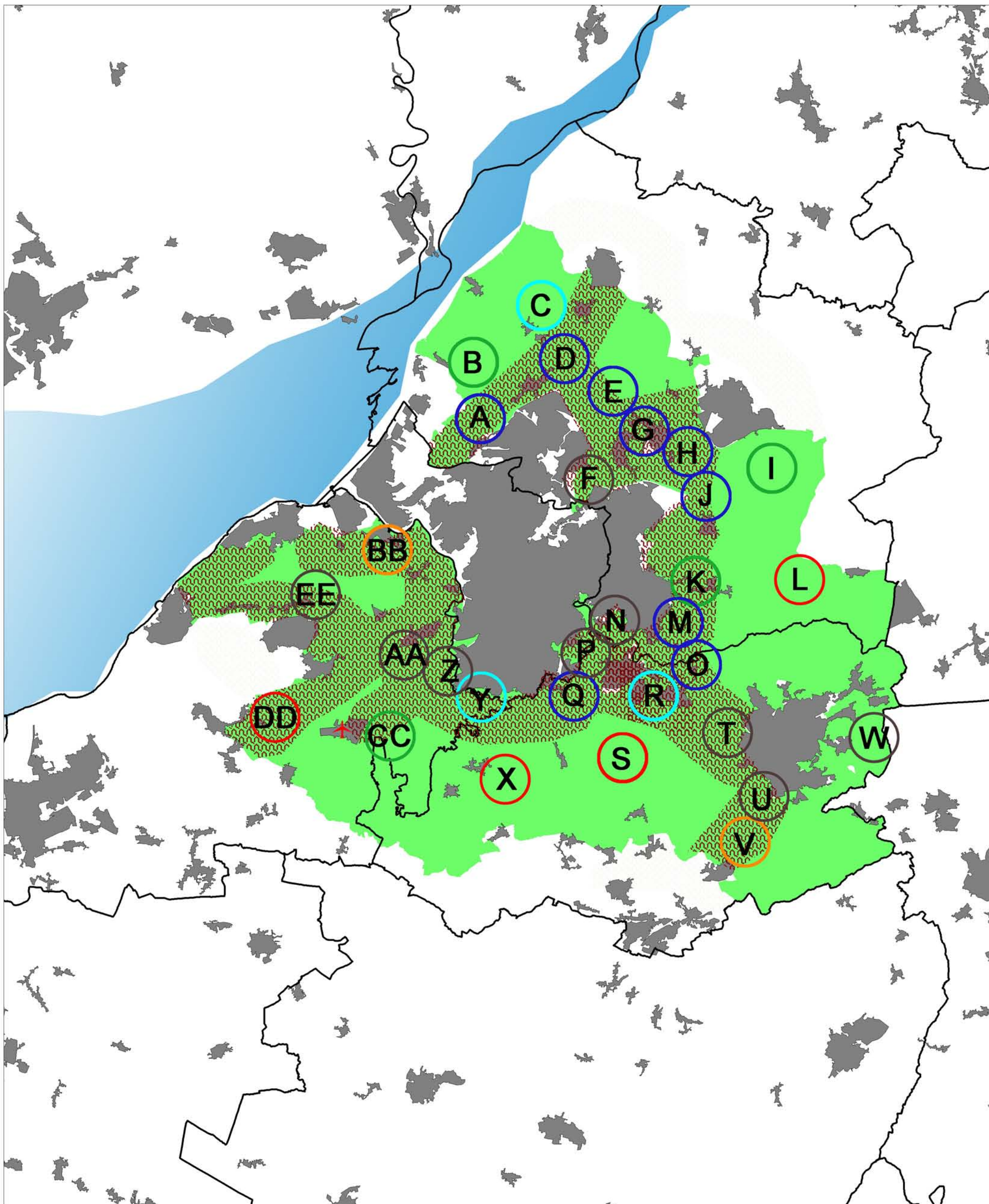


## Appendix 11: Green Belt Review – ranking of sensitivity to change

# West of England Green Belt review - ranking of sensitivity to change

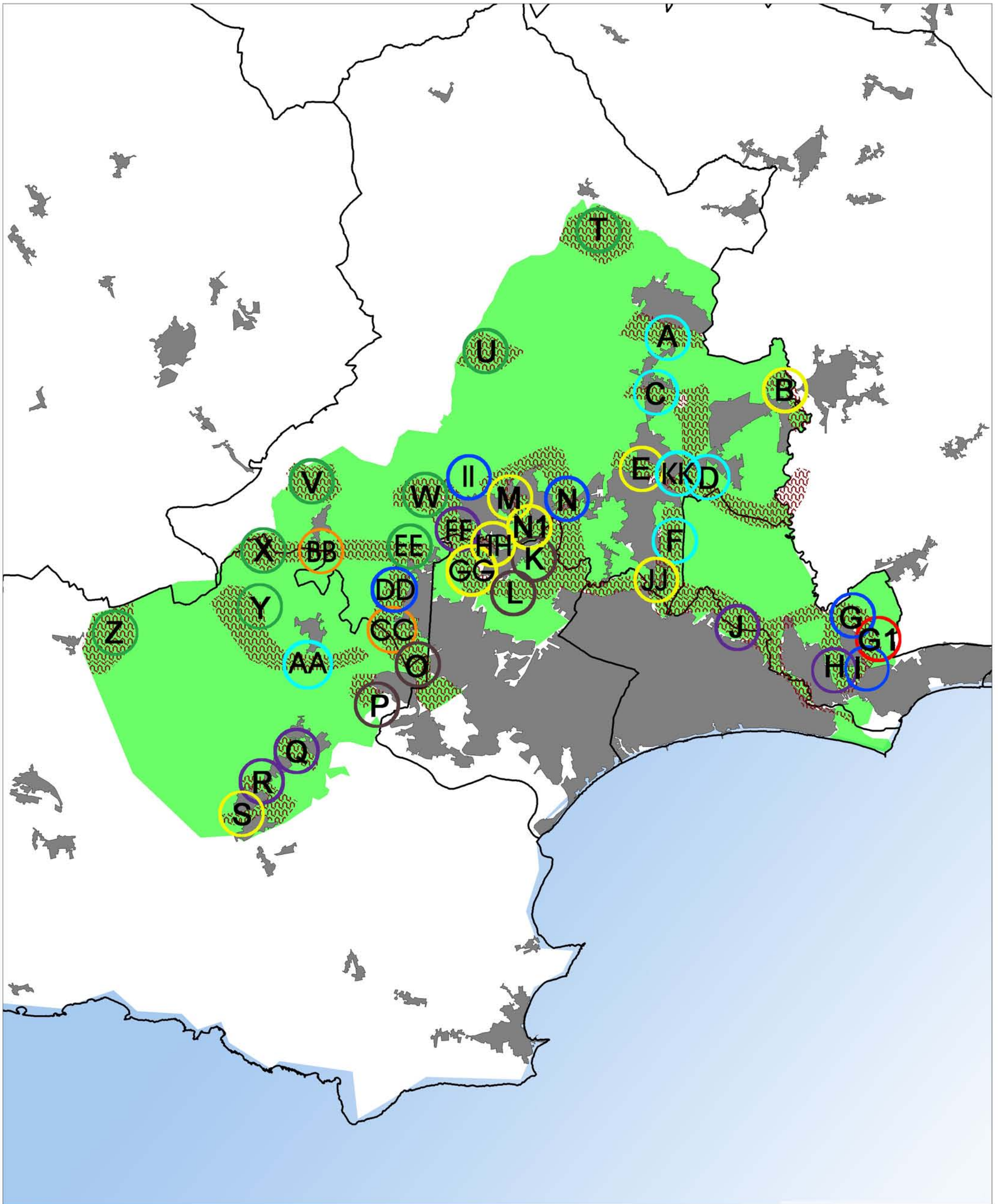


N.B. Circles do not refer to any specific locations and are indicative of area.



\* Urban areas based on ONS definition, which results in full extent of Green Belt not being properly shown for some urban locations

# South East Dorset Green Belt review - ranking of sensitivity to change

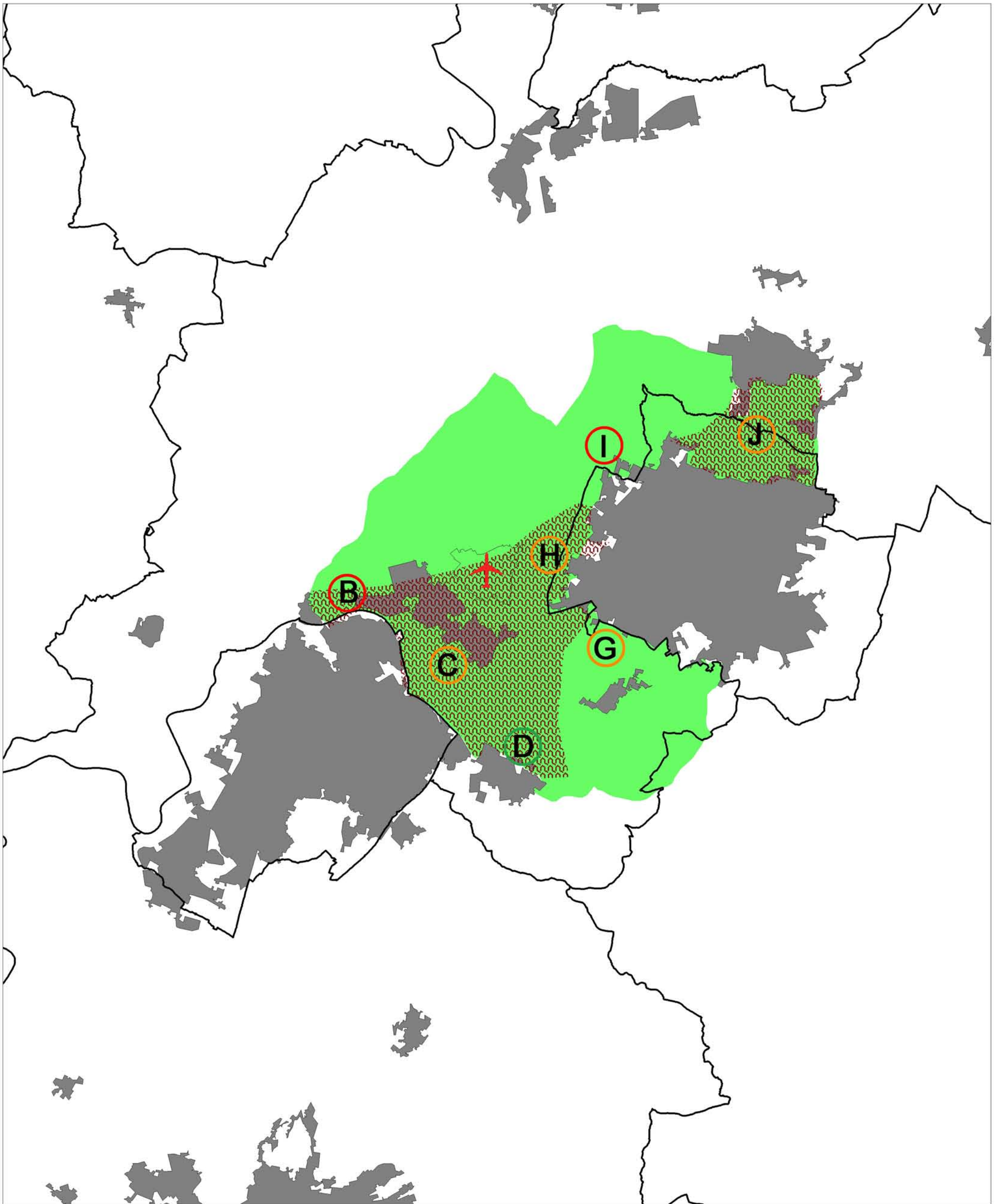


N.B. Circles do not refer to any specific locations and are indicative of area.

- |   |  |   |                                     |   |                                      |
|---|--|---|-------------------------------------|---|--------------------------------------|
|  | District boundary  |  | Ranked as causing least harm        |  | Ranked as causing fifth harm         |
|  | Green Belt*  |  | Ranked as causing second least harm |  | Ranked as causing sixth least harm   |
|  | Urban area*  |  | Ranked as causing third least harm  |  | Ranked as causing seventh least harm |
|  | Area contributing relatively more to PPG2 purposes of separation and setting of urban areas, and not otherwise covered by protective national designations |  | Ranked as causing fourth least harm |  | Most harm caused to Green Belt       |
|  | Airport  |   |                                     |   |                                      |

\* Urban areas based on ONS definition, which results in full extent of Green Belt not being properly shown for some urban locations

# Cheltenham and Gloucester Green Belt review - ranking of sensitivity to change



N.B. Circles do not refer to any specific locations and are indicative of area.

- |   |  |  |                                     |   |                                      |
|---|--|--|-------------------------------------|---|--------------------------------------|
|  | District boundary  |  | Ranked as causing least harm        |  | Ranked as causing fifth harm         |
|  | Green Belt*  |  | Ranked as causing second least harm |  | Ranked as causing sixth least harm   |
|  | Urban area*  |  | Ranked as causing third least harm  |  | Ranked as causing seventh least harm |
|  | Area contributing relatively more to PPG2 purposes of separation and setting of urban areas, and not otherwise covered by protective national designations |  | Ranked as causing fourth least harm |  | Most harm caused to Green Belt       |
|  | Airport  |  |                                     |   |                                      |

\* Urban areas based on ONS definition, which results in full extent of Green Belt not being properly shown for some urban locations