

APPENDIX B

Appraisal of the Site-Specific Factors

B. Appraisal of the Site-Specific Factors

B.1 This Appendix contains a series of diagrams and maps which summarise the impacts of the strategies on individual locations across the study area. The figures consider the following features covered within the overall appraisal process:

- ◆ landscape – Figures B.1 to B.3;
- ◆ heritage – Figures B.4 to B.6;
- ◆ biodiversity – Figures B.7 to B.9;
- ◆ water environment – Figures B.10 to B.12;
- ◆ public transport journey times – Figures B.13 to B.22; and
- ◆ car journey times – Figures B.23 to B.32.

Figure B.1 – Landscape Constraints in North Somerset and South Bristol

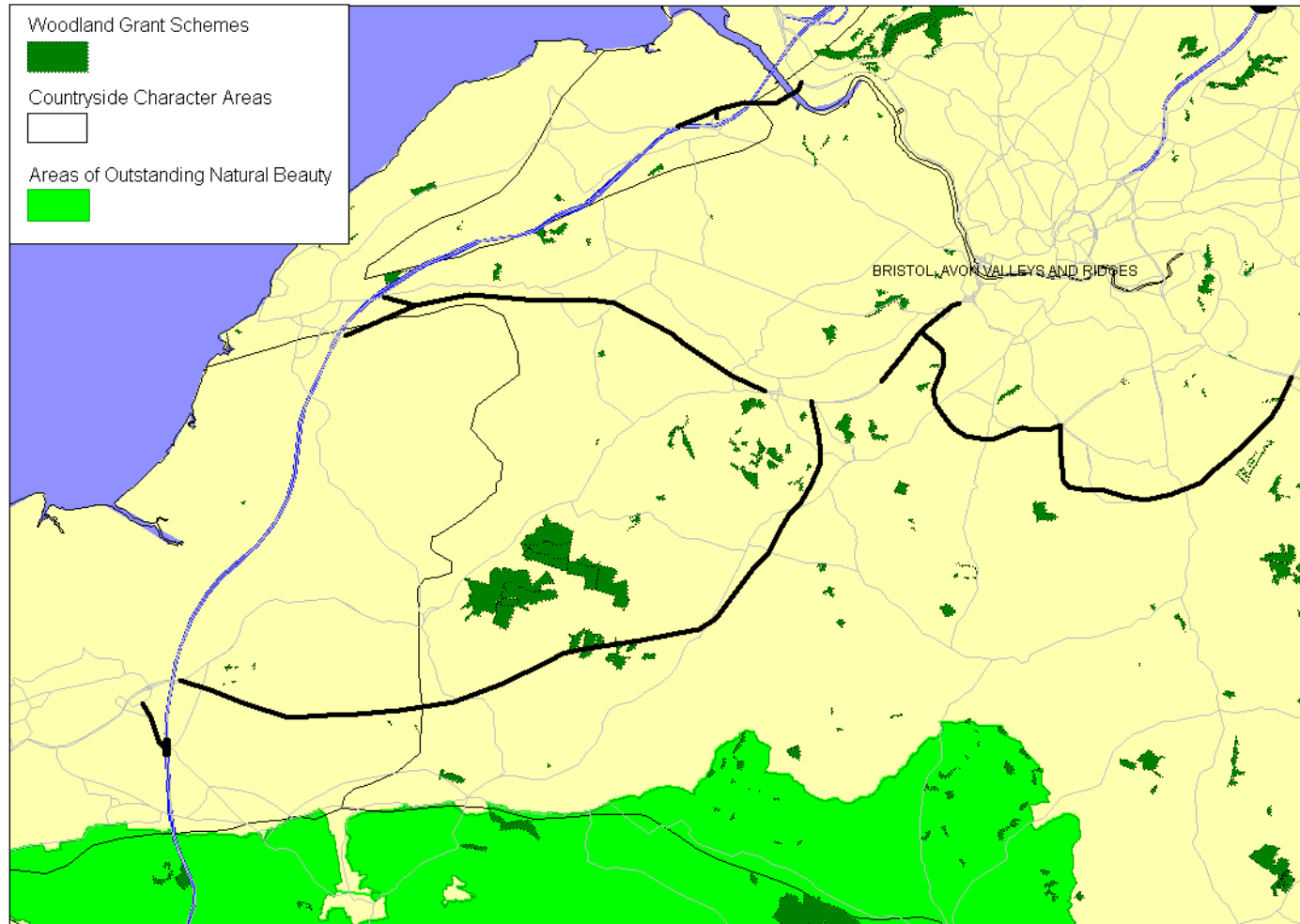


Figure B.2 – Landscape Constraints in North Bristol and South Gloucestershire

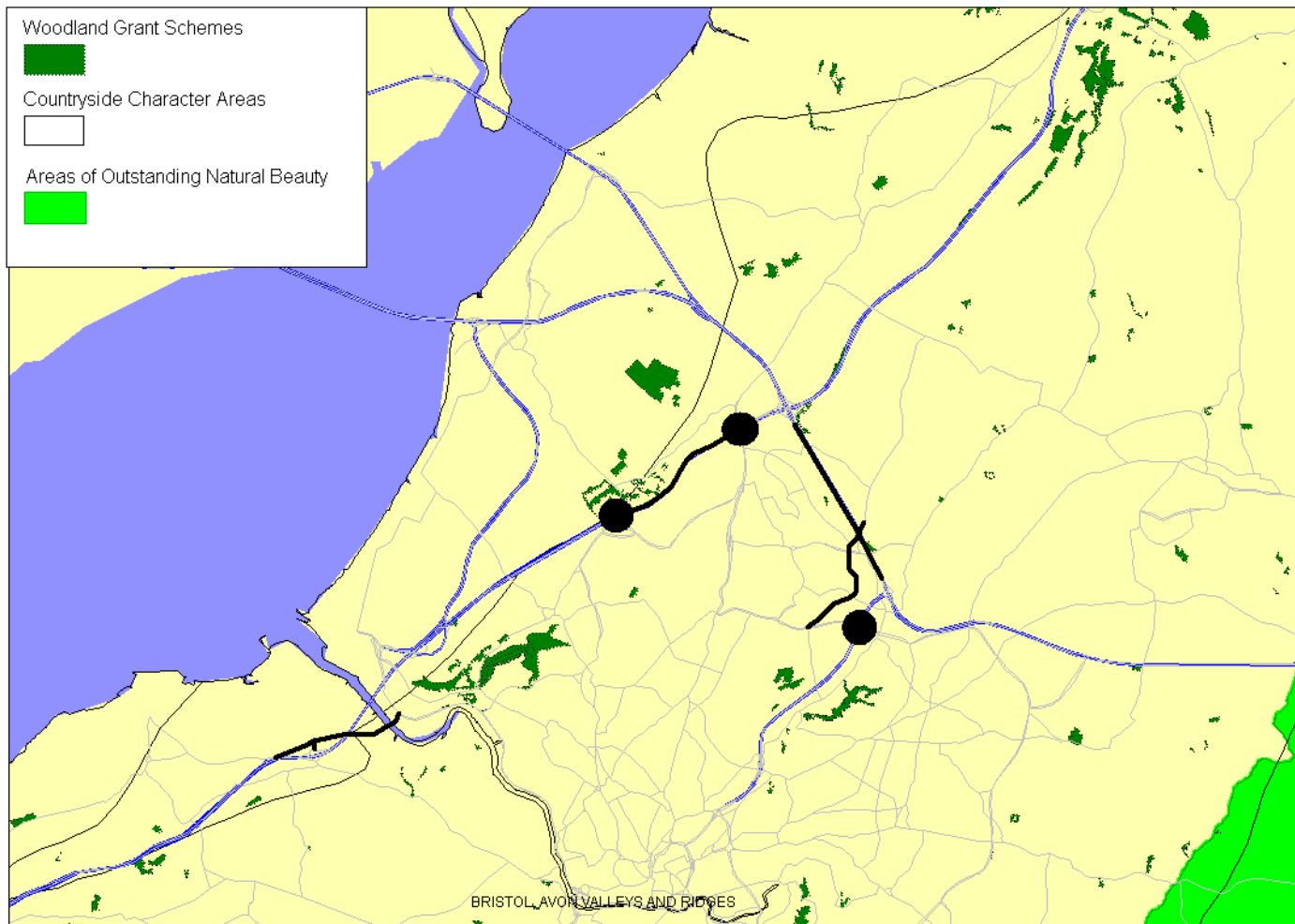


Figure B.3 – Landscape Constraints in Bath and North East Somerset

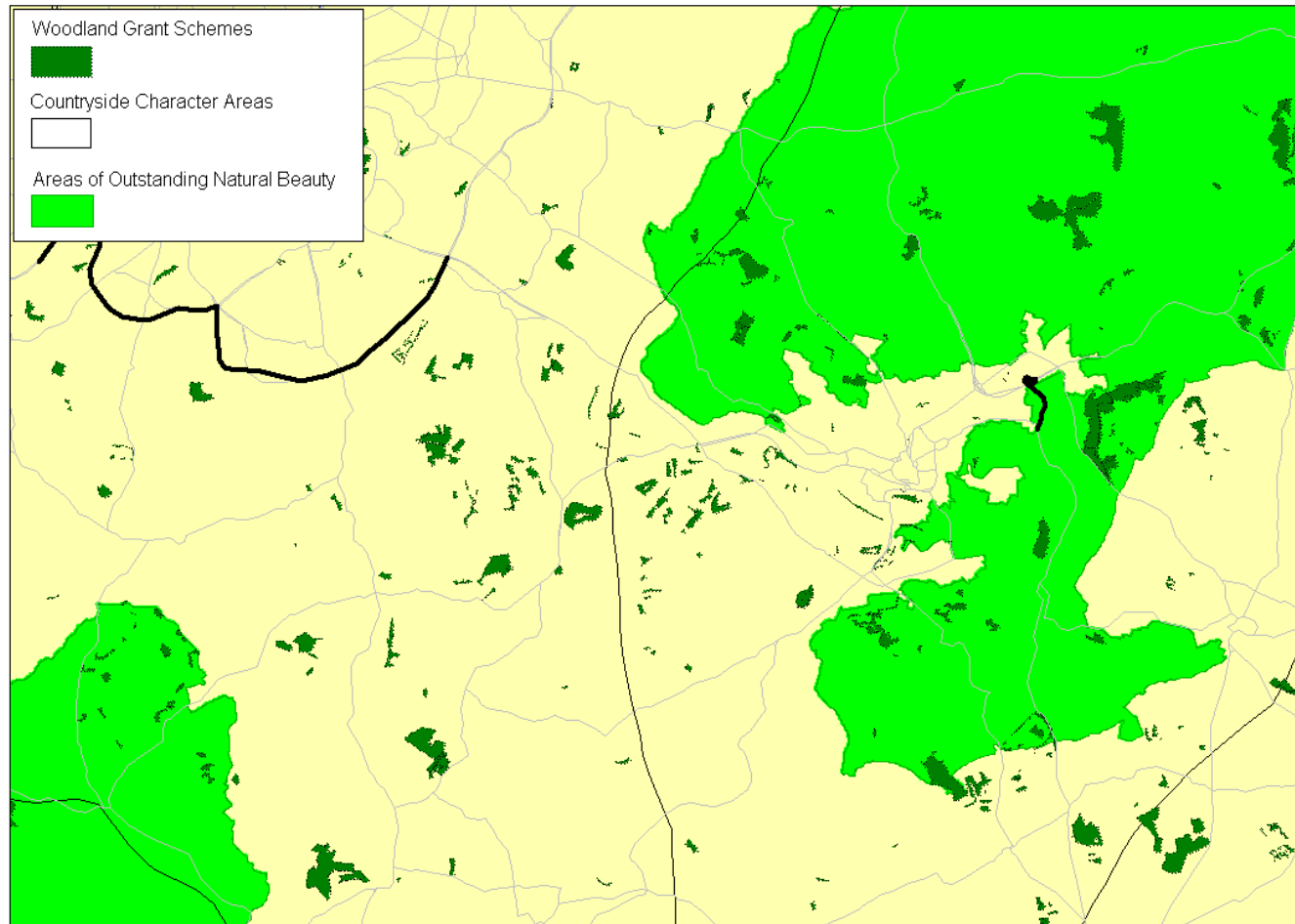


Figure B.4 – Heritage Sites in North Somerset and South Bristol

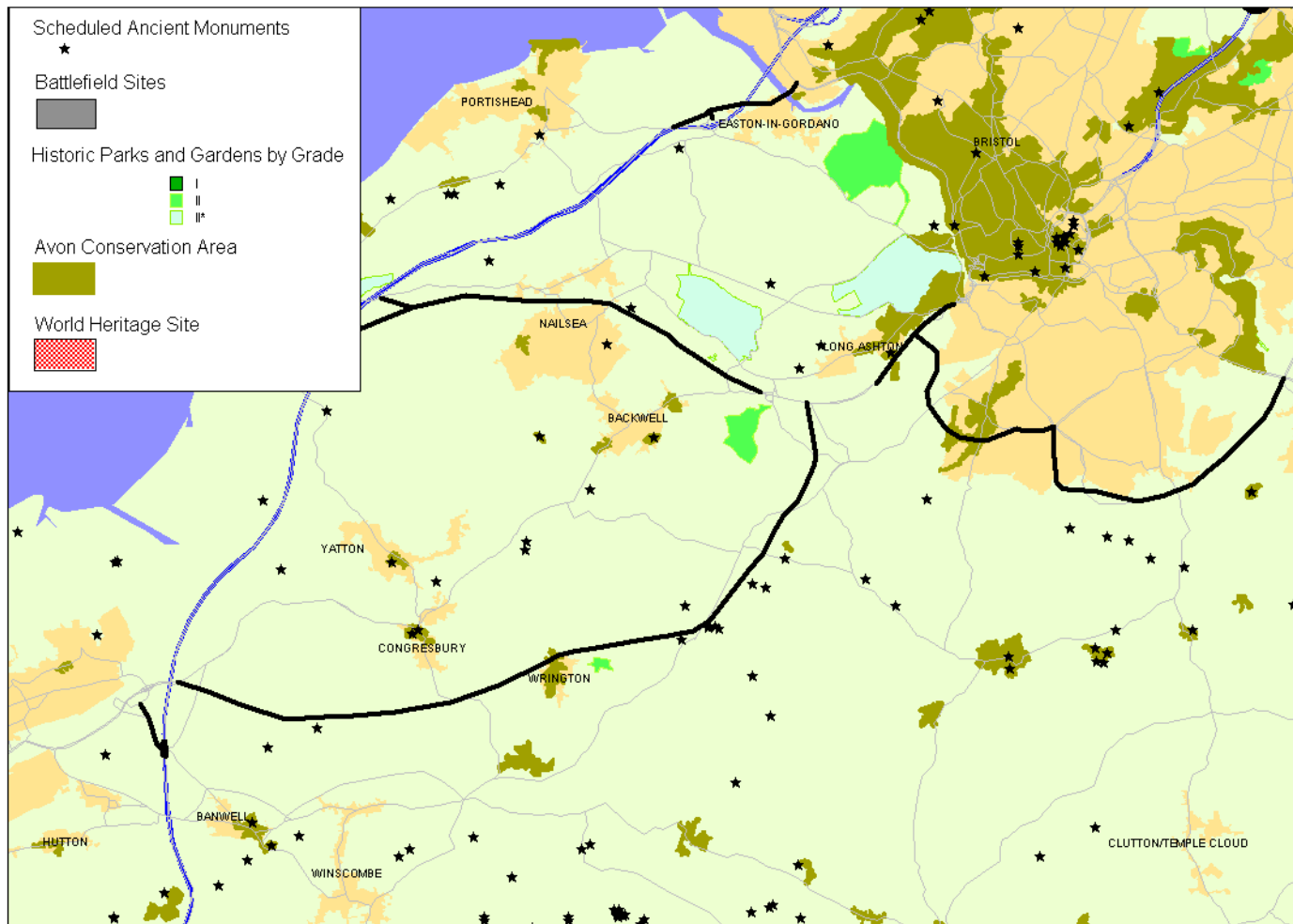


Figure B.5 – Heritage Sites in North Bristol and South Gloucestershire

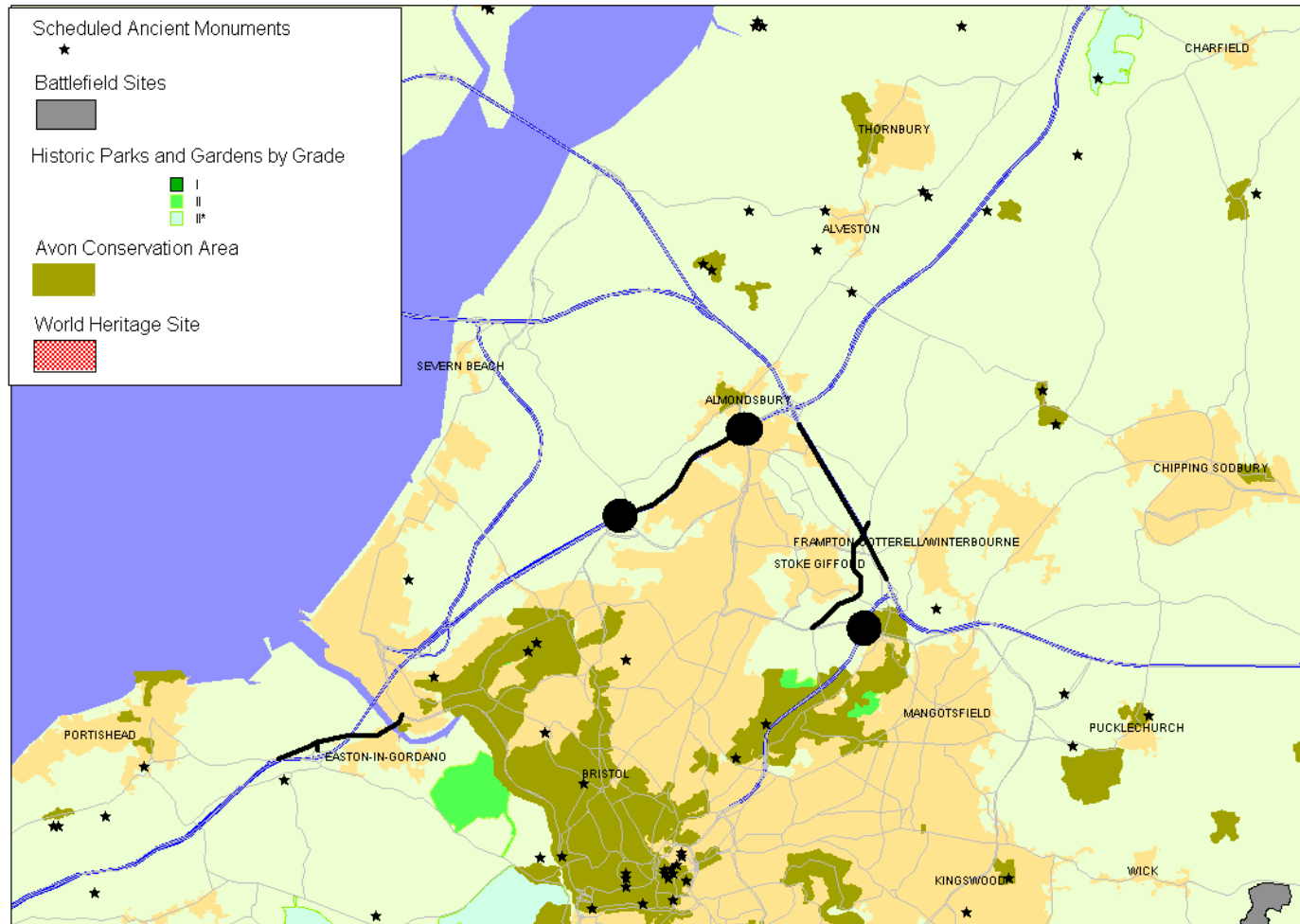


Figure B.6 – Heritage Sites in Bath and North East Somerset

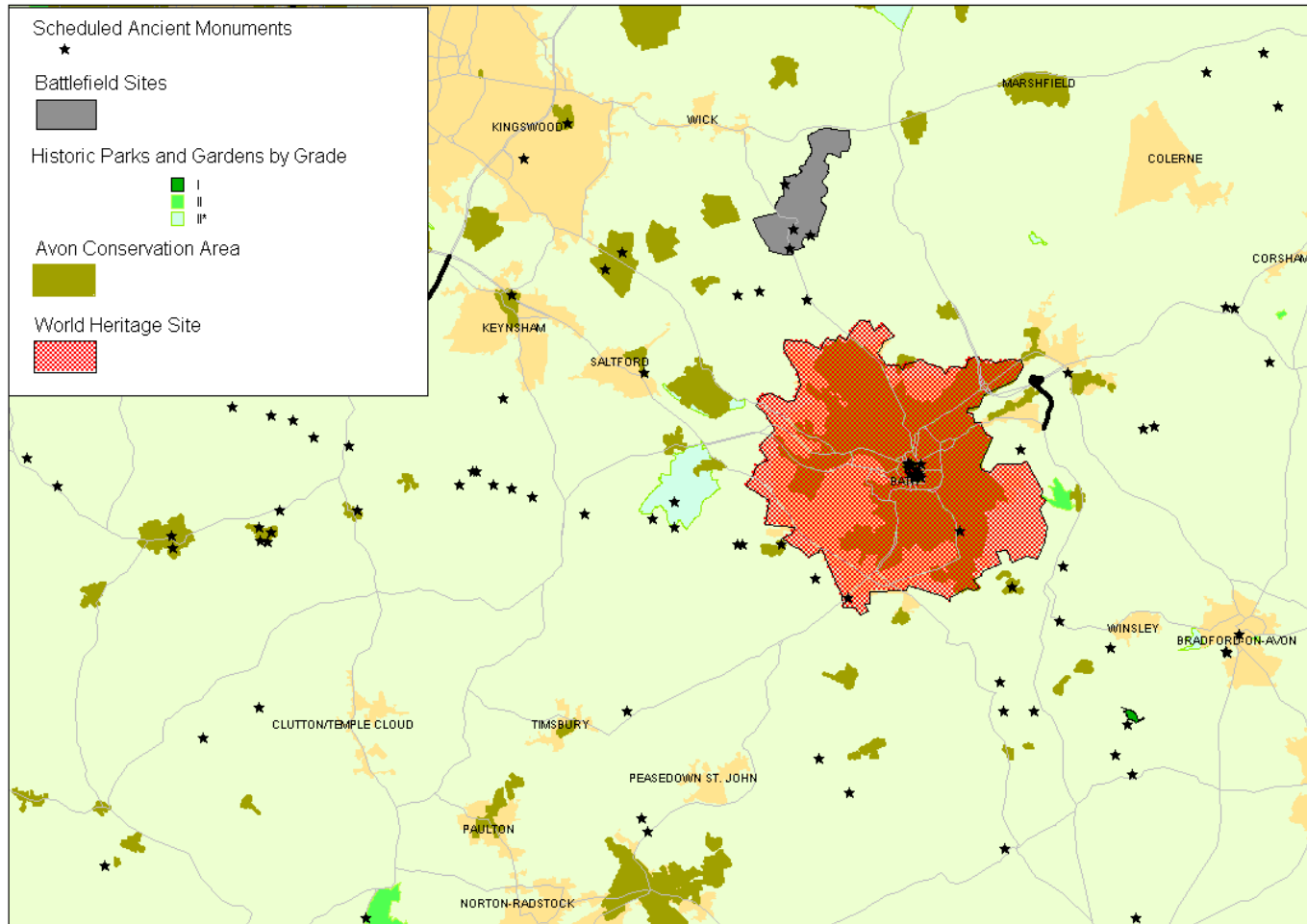


Figure B.7 – Biodiversity in North Somerset and South Bristol

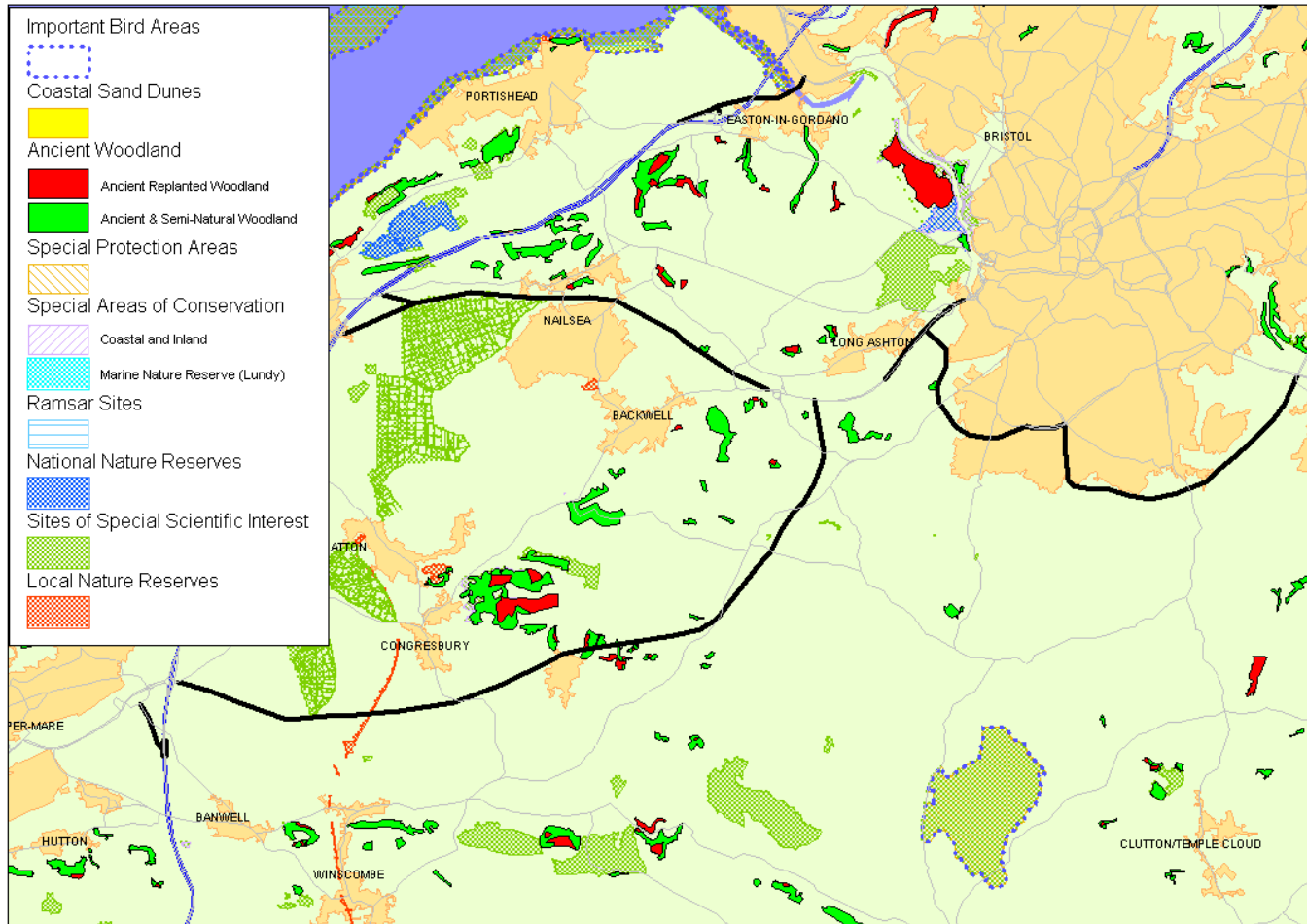


Figure B.8 – Biodiversity in North Bristol and South Gloucestershire

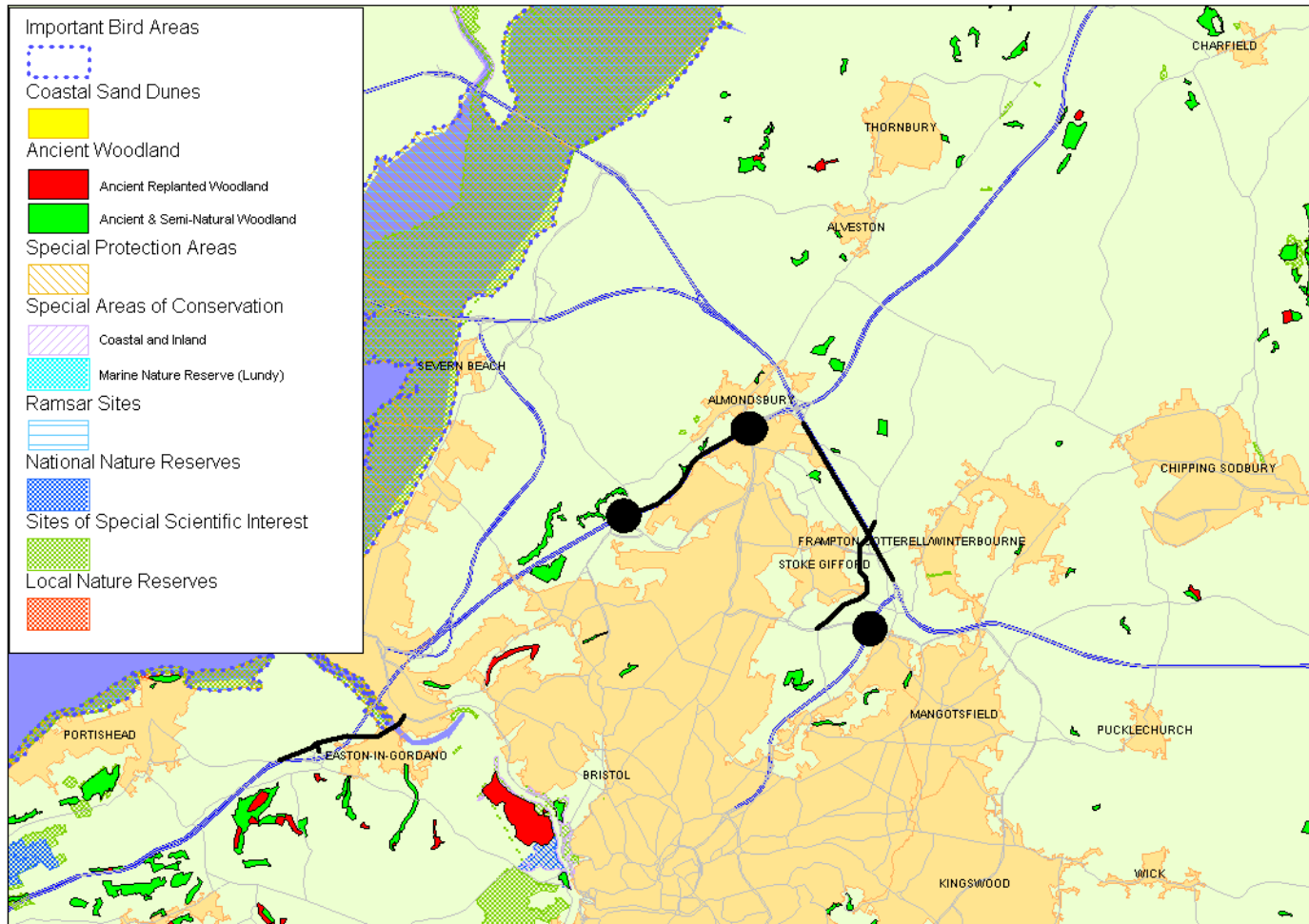


Figure B.9 – Biodiversity in Bath and North East Somerset

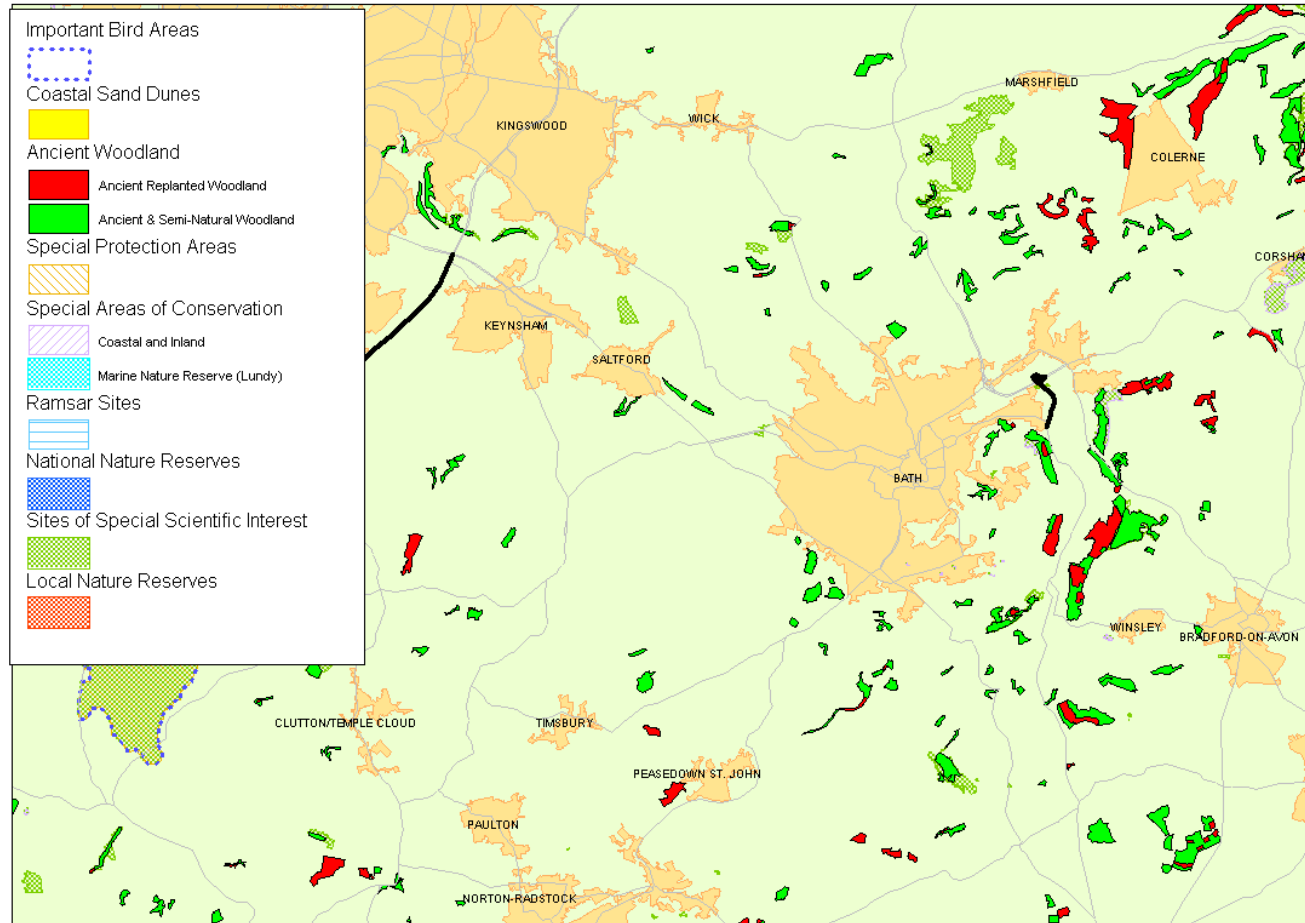


Figure B.10 – Water Environment in North Somerset and South Bristol

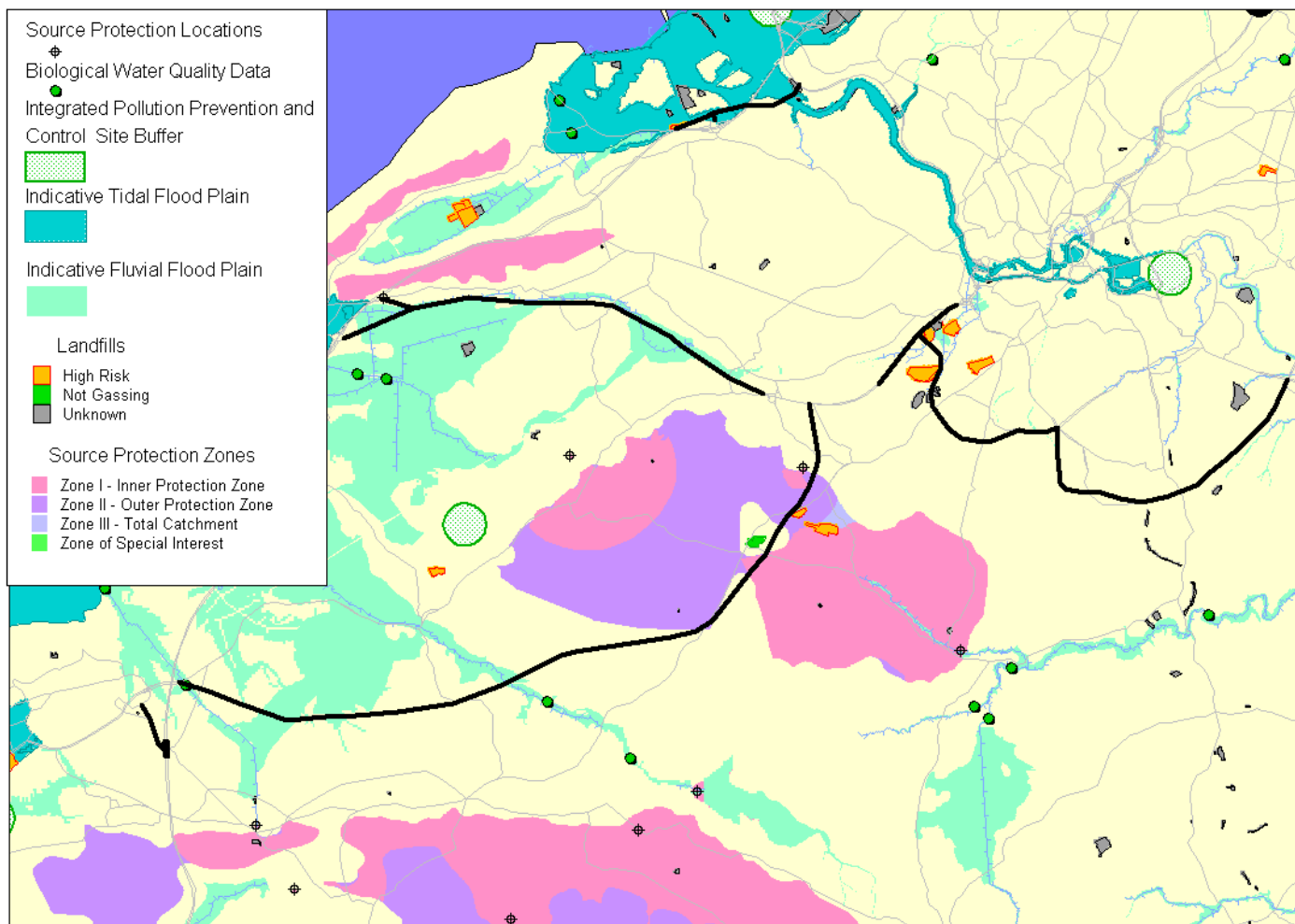


Figure B.11 – Water Environment in North Bristol and South Gloucestershire

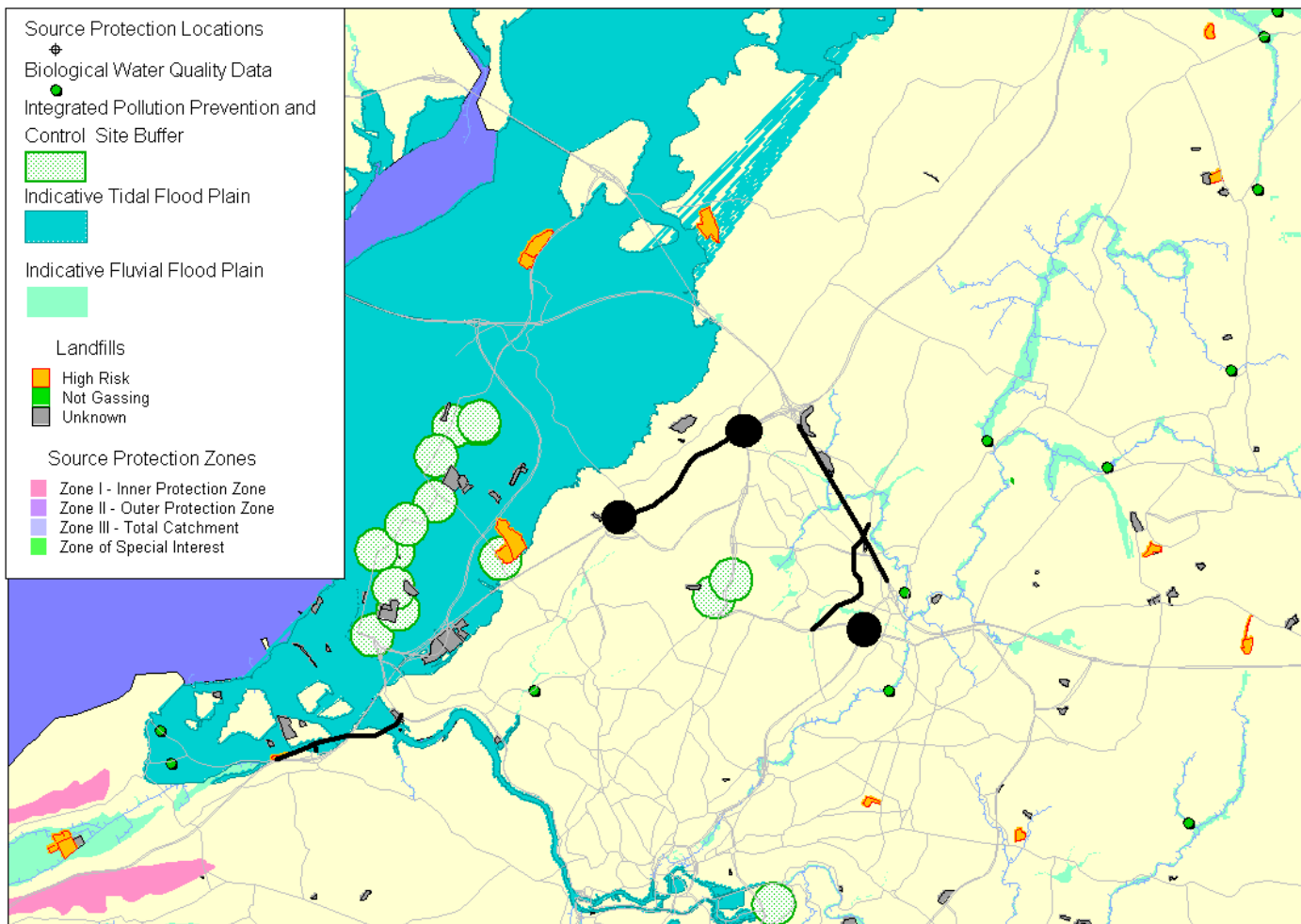


Figure B.12 – Water Environment in Bath and North East Somerset

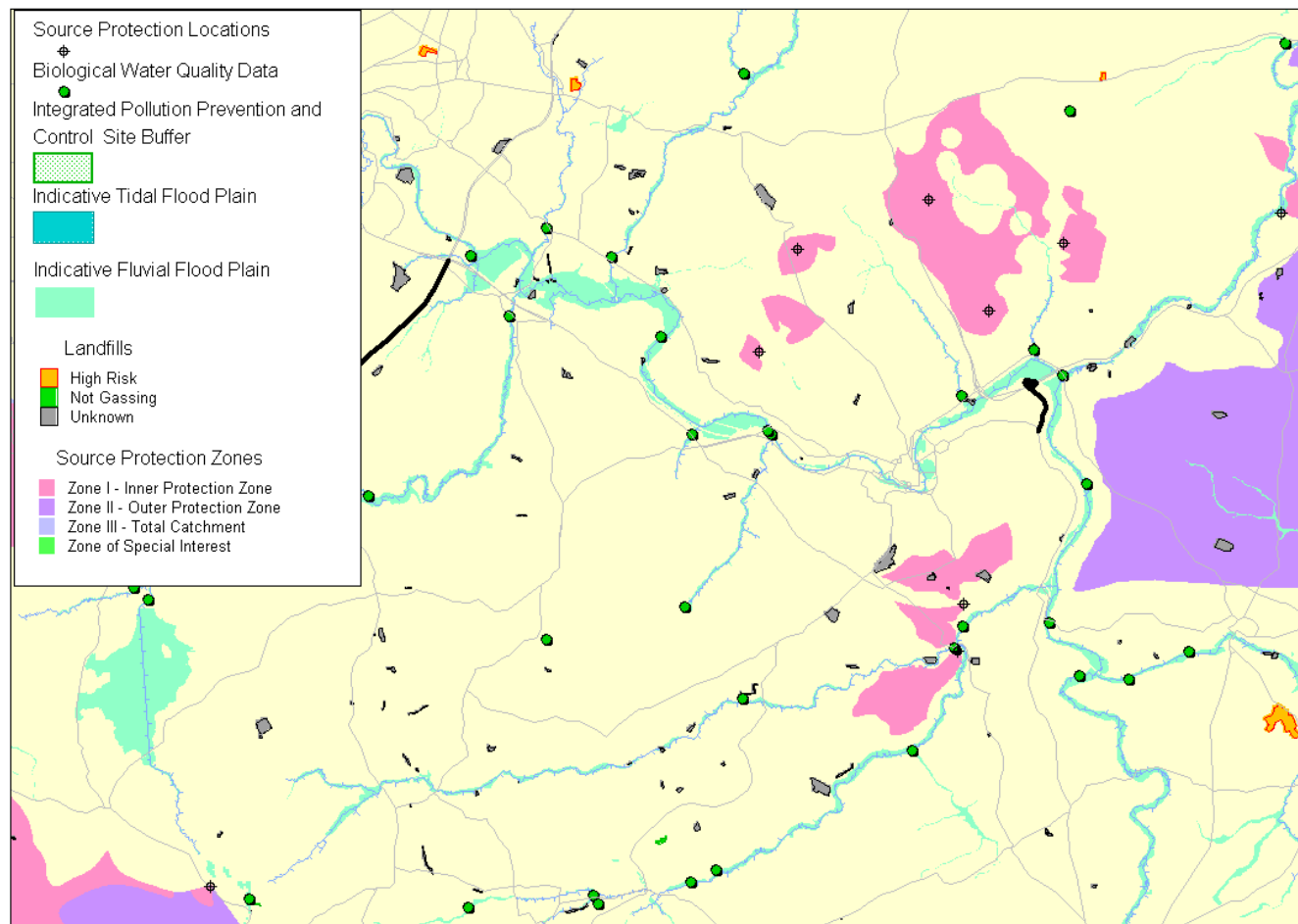


Figure B.13 – Do Minimum Public Transport Journey Times to Bristol City Centre

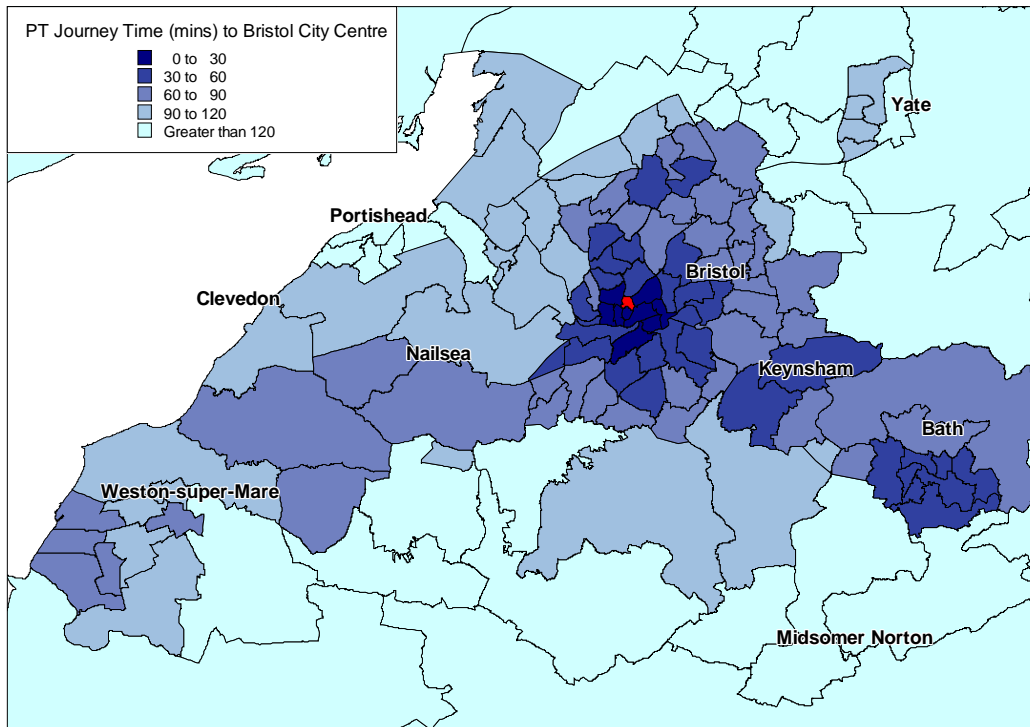


Figure B.14 – GBSTS Strategy Public Transport Journey Times to Bristol City Centre

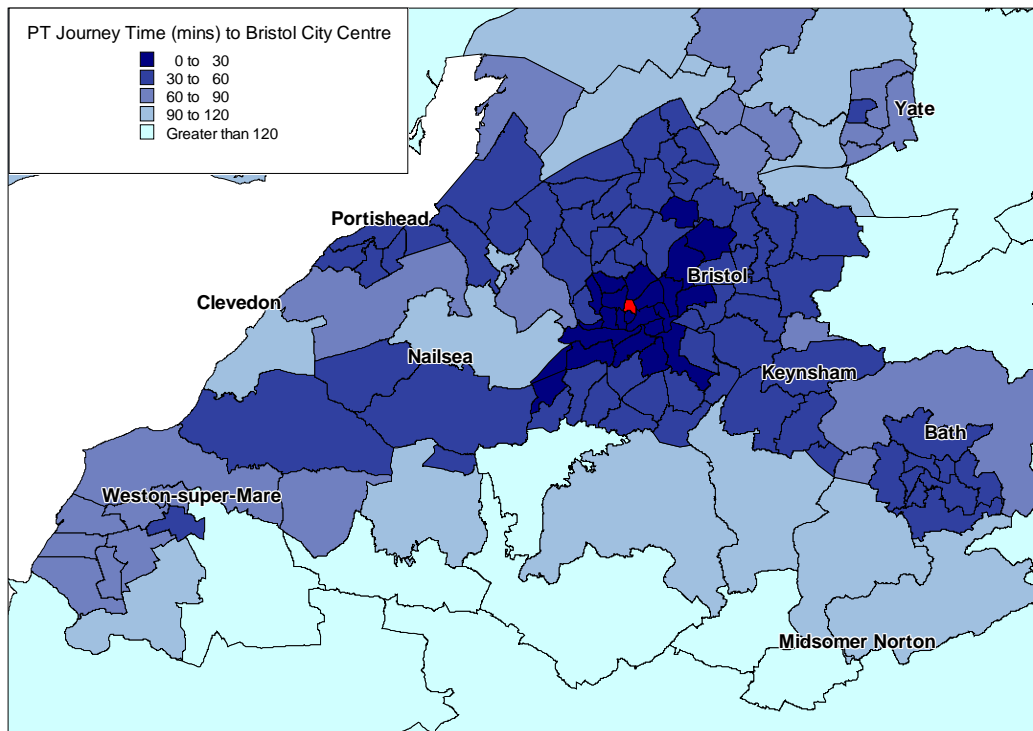


Figure B.15 – Do Minimum Public Transport Journey Times to Bath City Centre

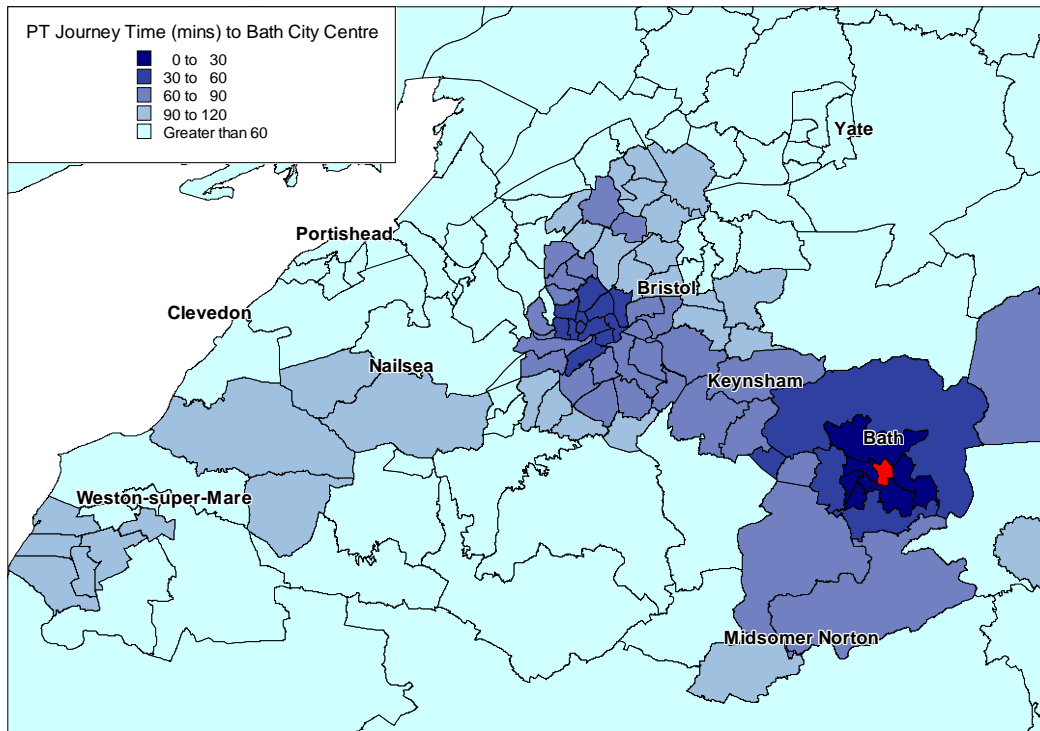


Figure B.16 – GBSTS Strategy Public Transport Journey Times to Bath City Centre

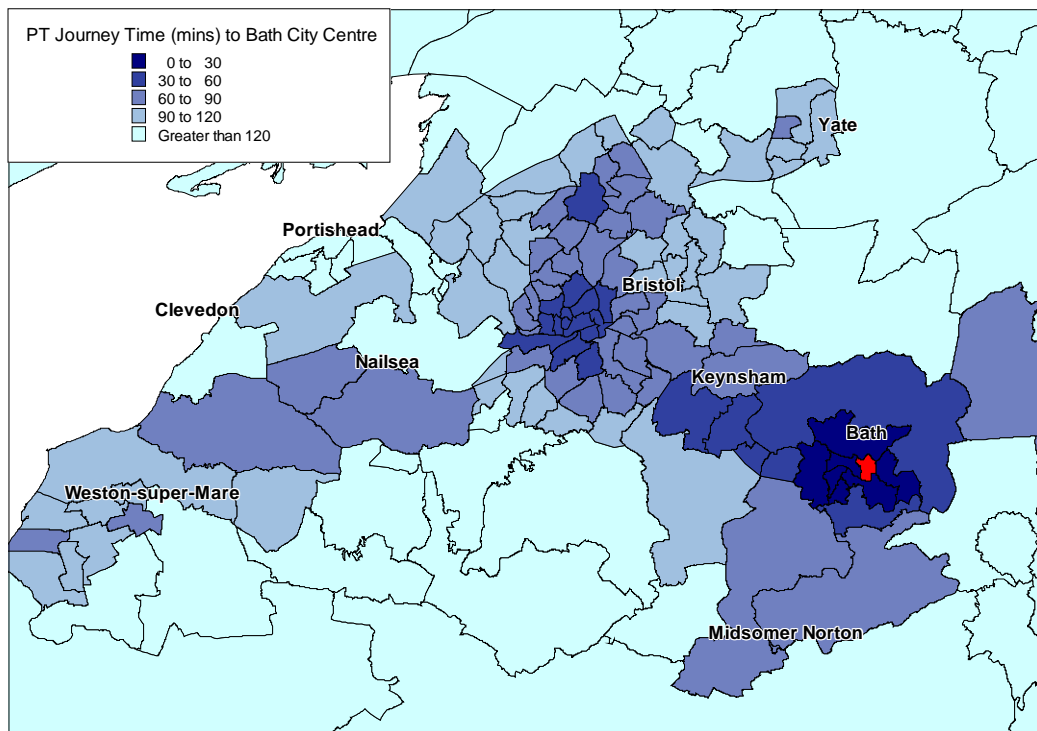


Figure B.17 – Do Minimum Public Transport Journey Times to Weston-super-Mare

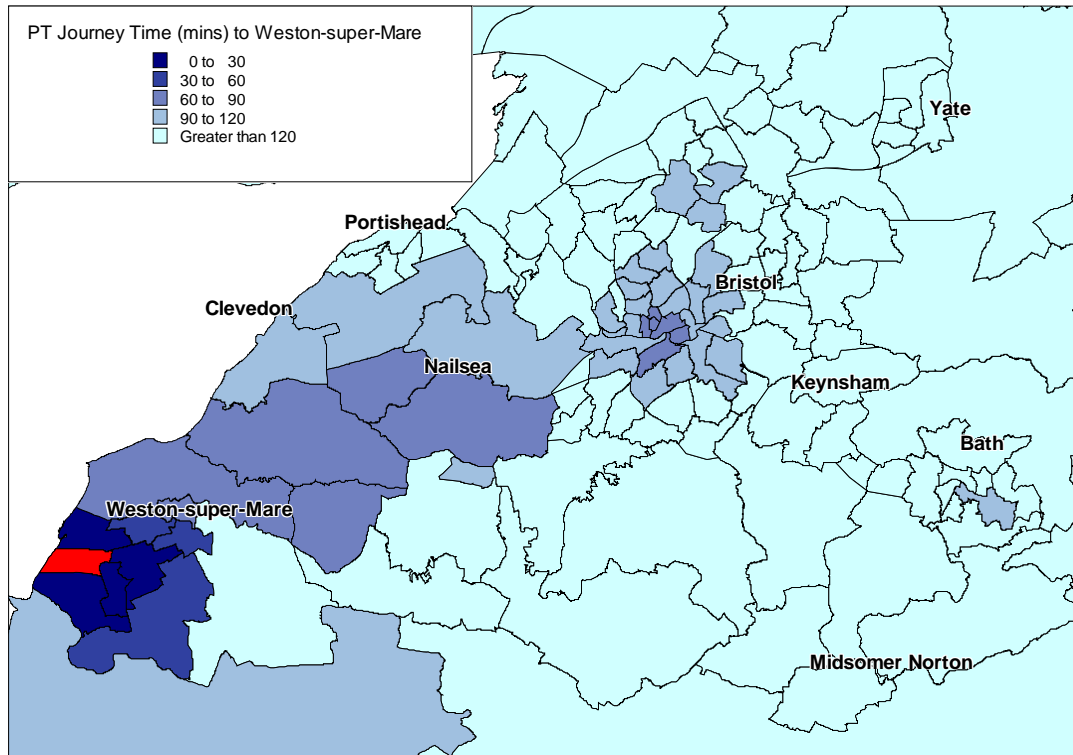


Figure B.18 – GBSTS Strategy Public Transport Journey Times to Weston-super-Mare

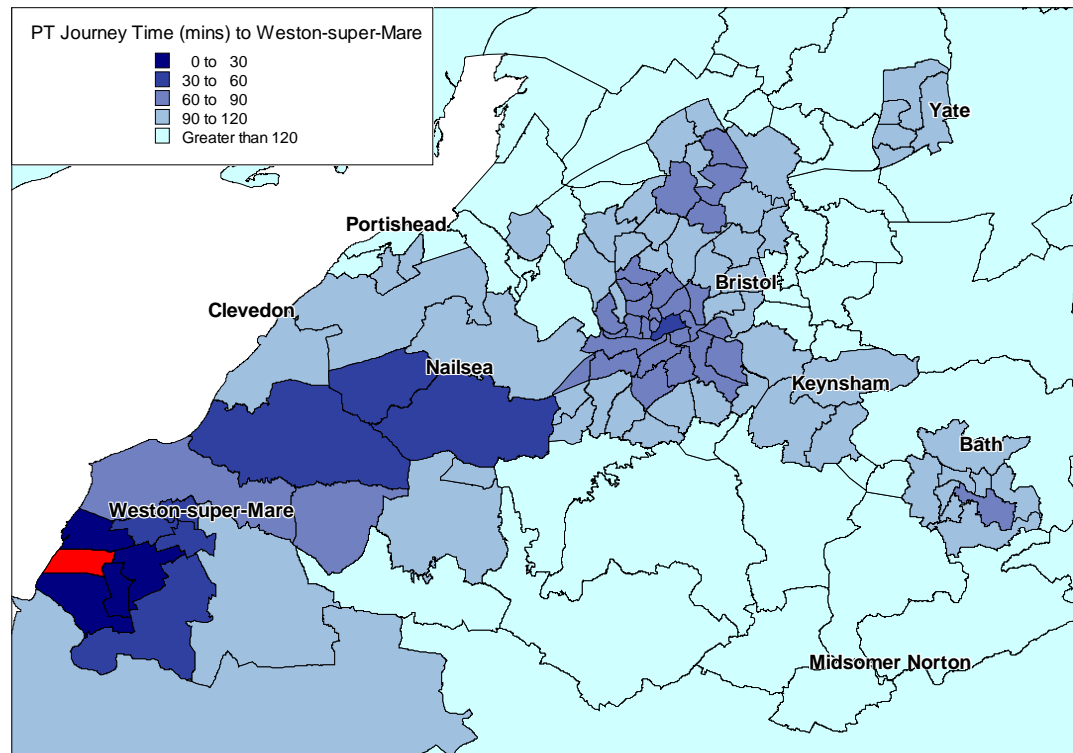


Figure B.19 – Do Minimum Public Transport Journey Times to Aztec West

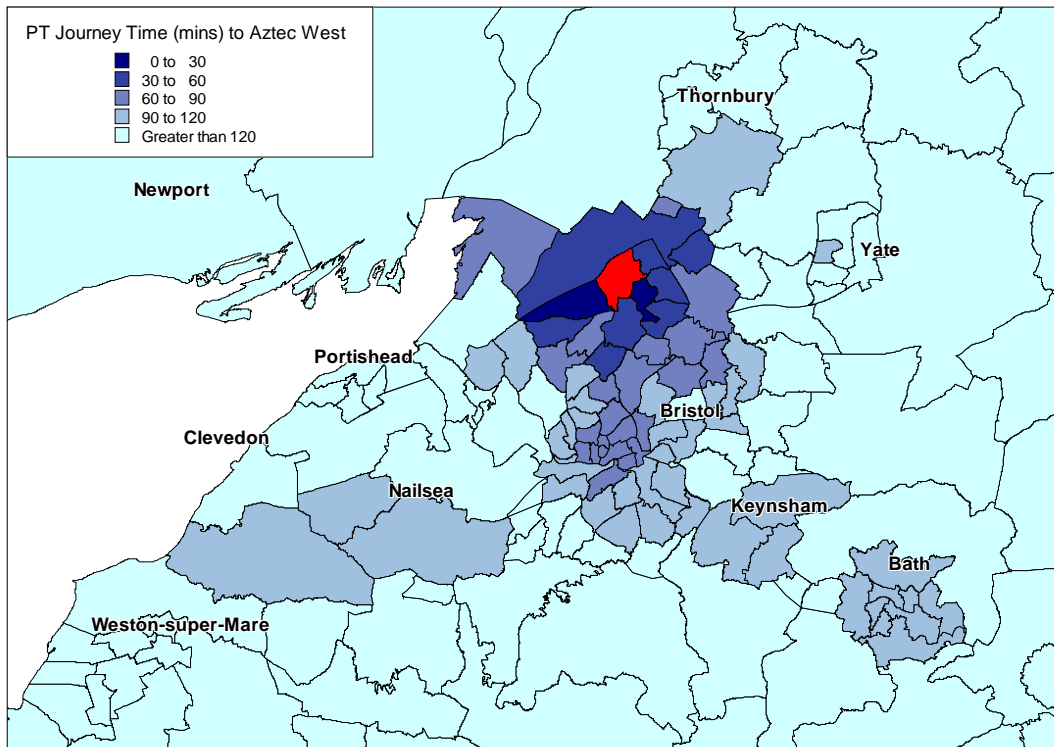


Figure B.20 – GBSTS Strategy Public Transport Journey Times to Aztec West

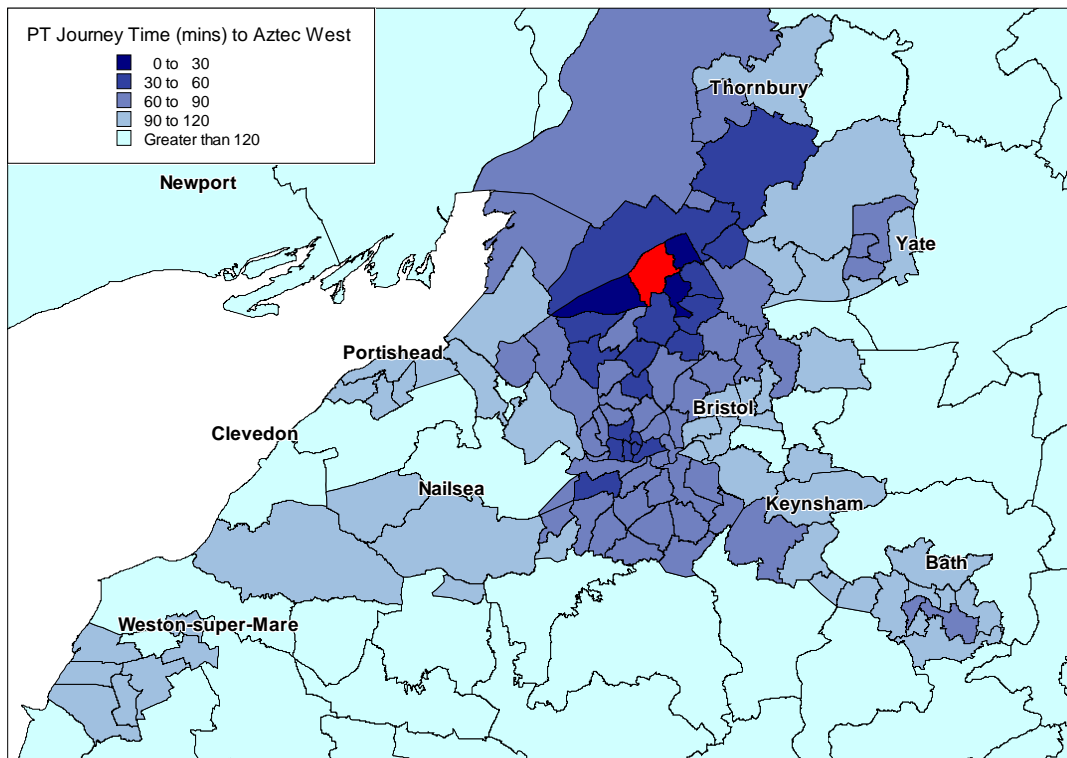


Figure B.21 – Do Minimum Public Transport Journey Times to BIA

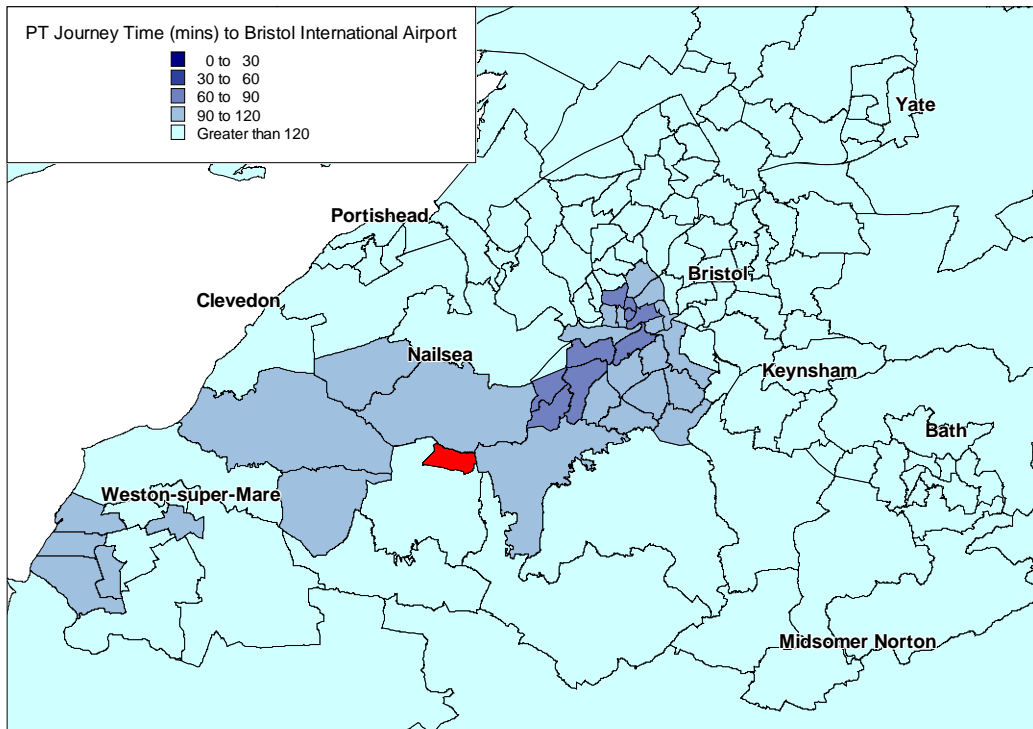


Figure B.22 – GBSTS Strategy Public Transport Journey Times to BIA

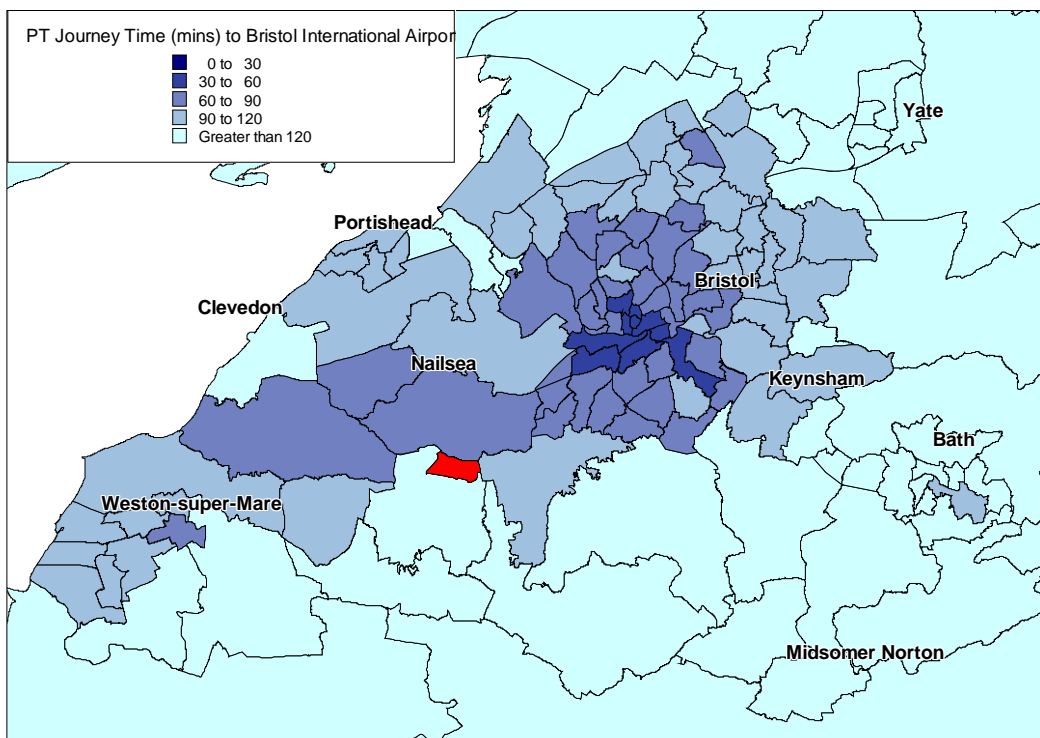


Figure B.23 – Do Minimum Car Journey Times to Bristol City Centre

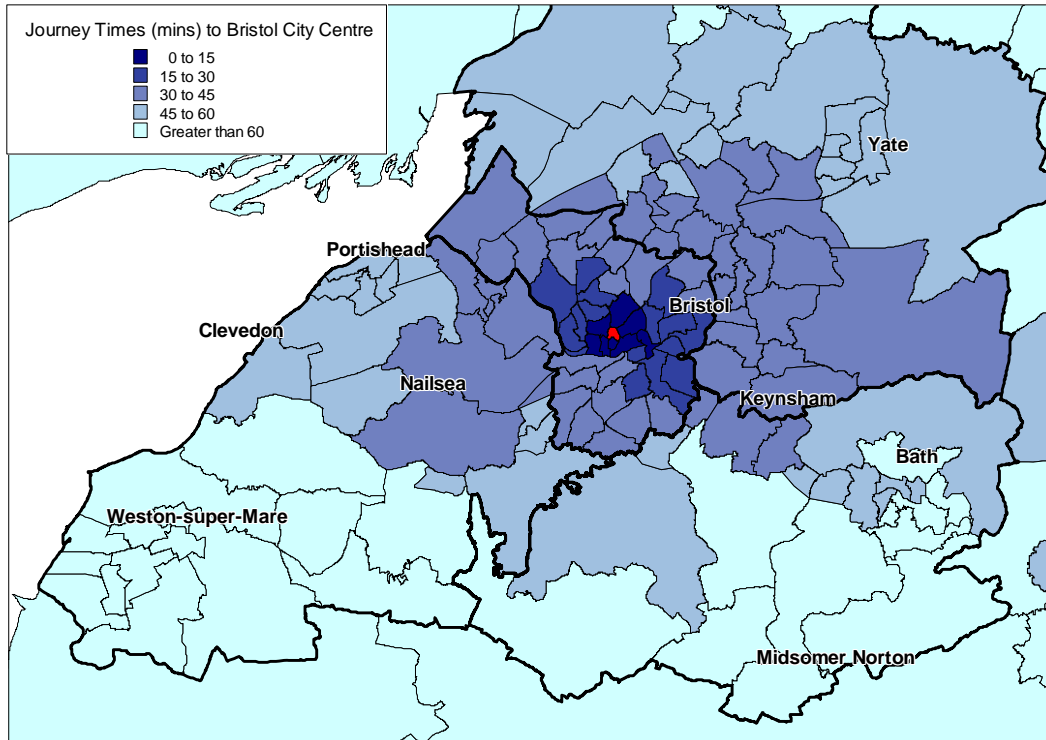


Figure B.24 – GBSTS Strategy Car Journey Times to Bristol City Centre

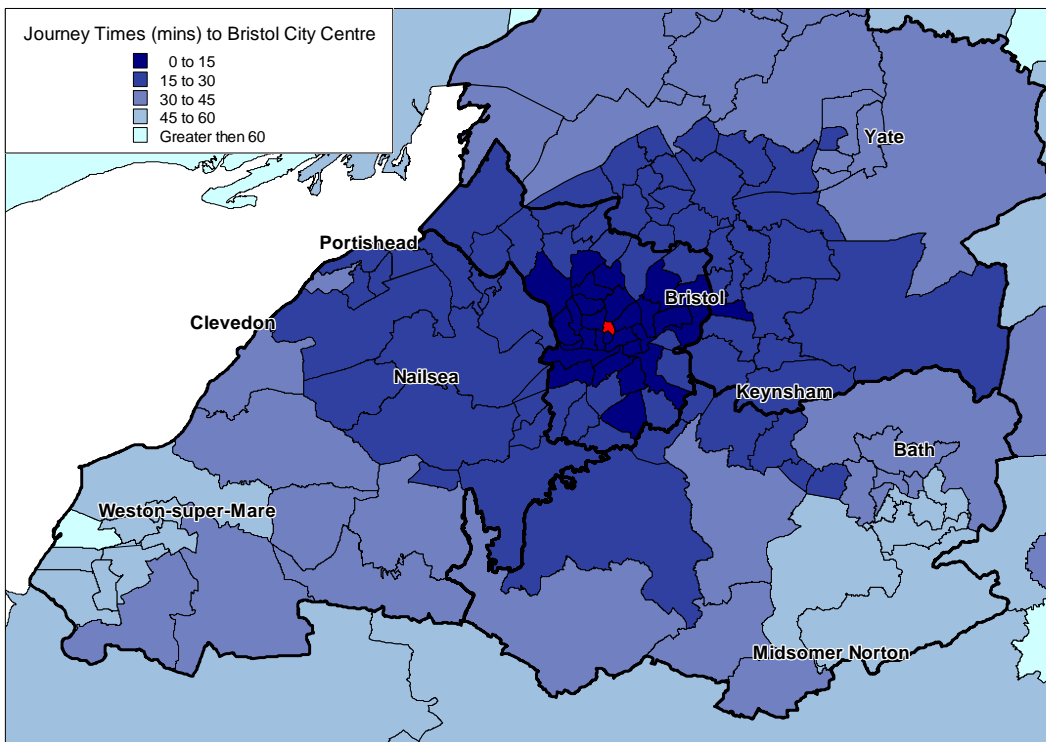


Figure B.25 – Do Minimum Car Journey Times to Bath City Centre

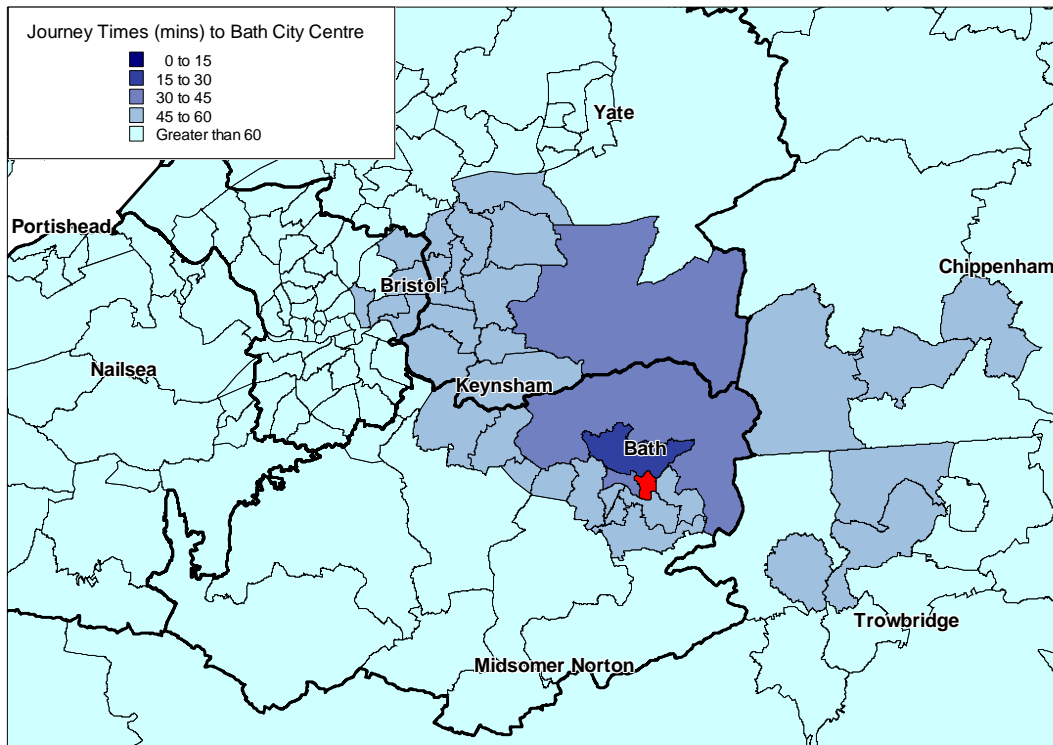


Figure B.26 – GBSTS Strategy Car Journey Times to Bath City Centre

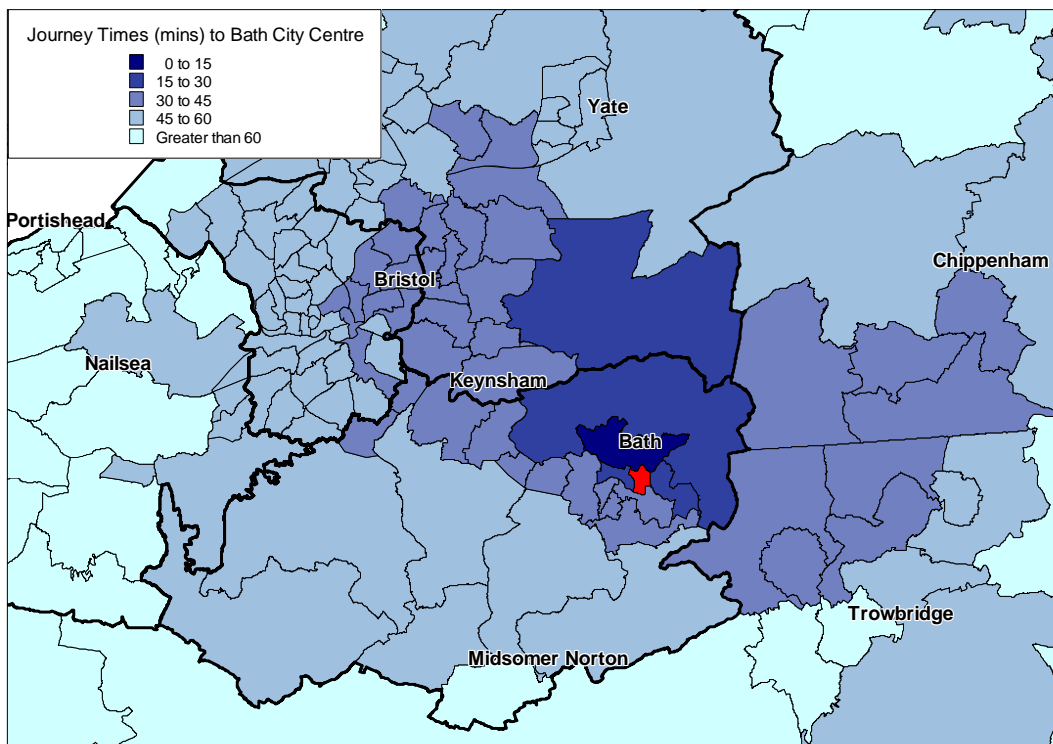


Figure B.27 – Do Minimum Car Journey Times to Weston-super-Mare

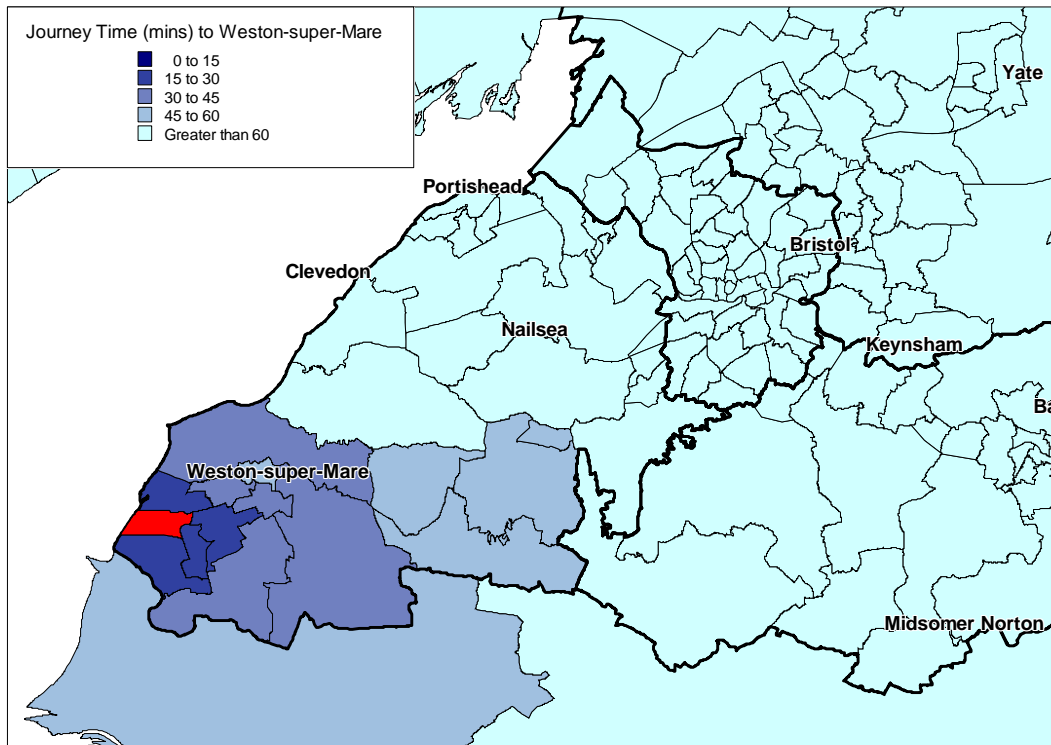


Figure B.28 – GBSTS Strategy Car Journey Times to Weston-super-Mare

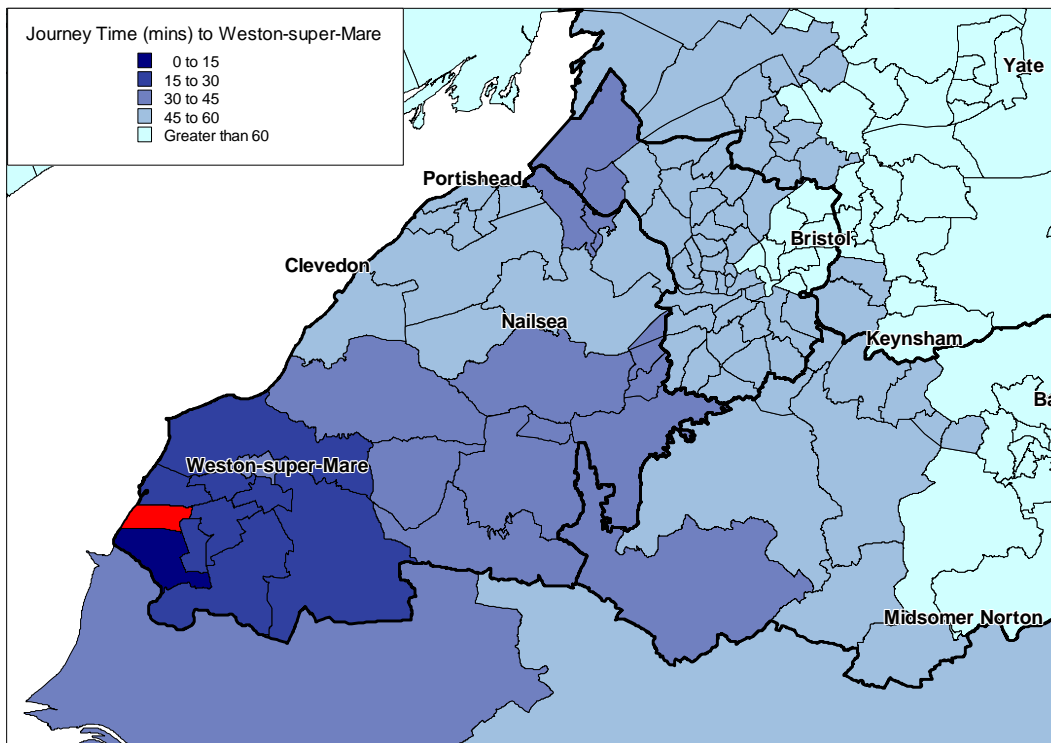


Figure B.29 – Do Minimum Car Times to Aztec West

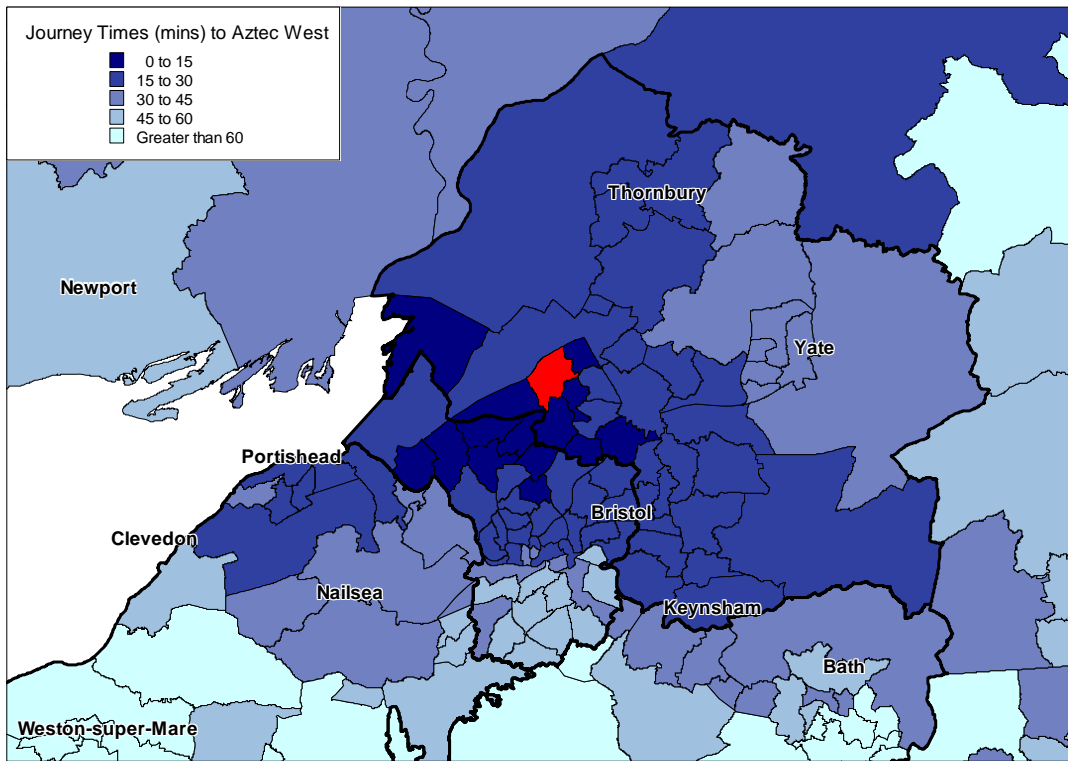


Figure B.30 – GBSTS Strategy Car Times to Aztec West

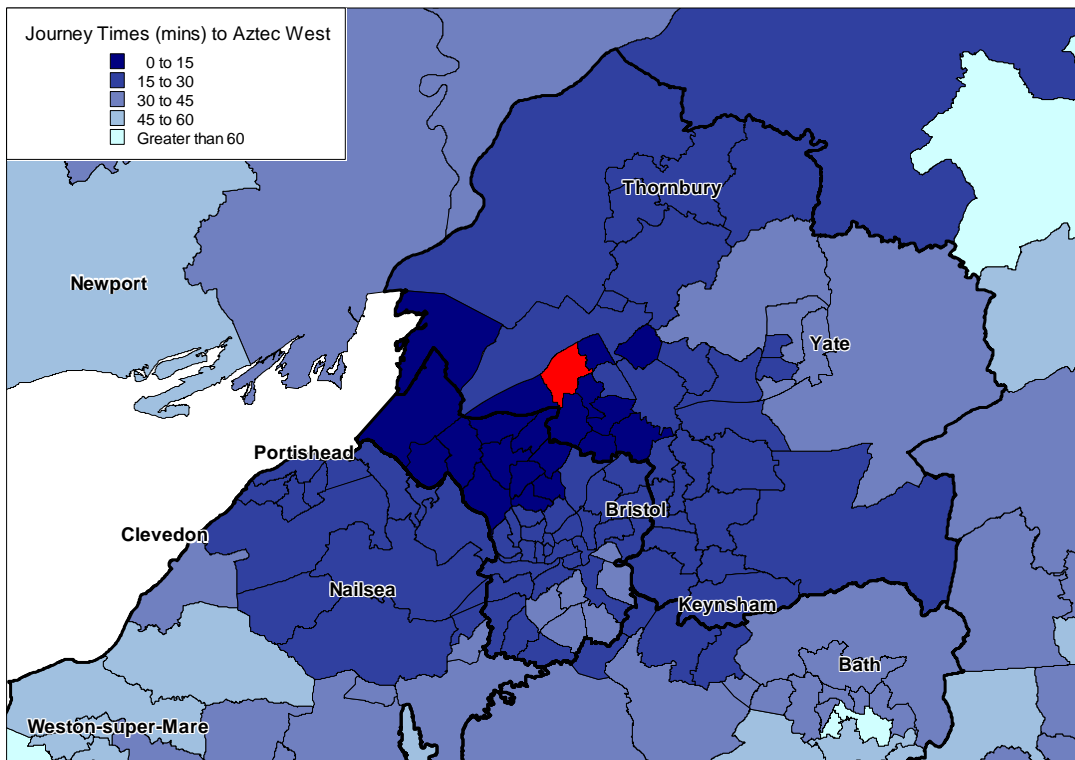


Figure B.31 – Do Minimum Car Journey Times to BIA

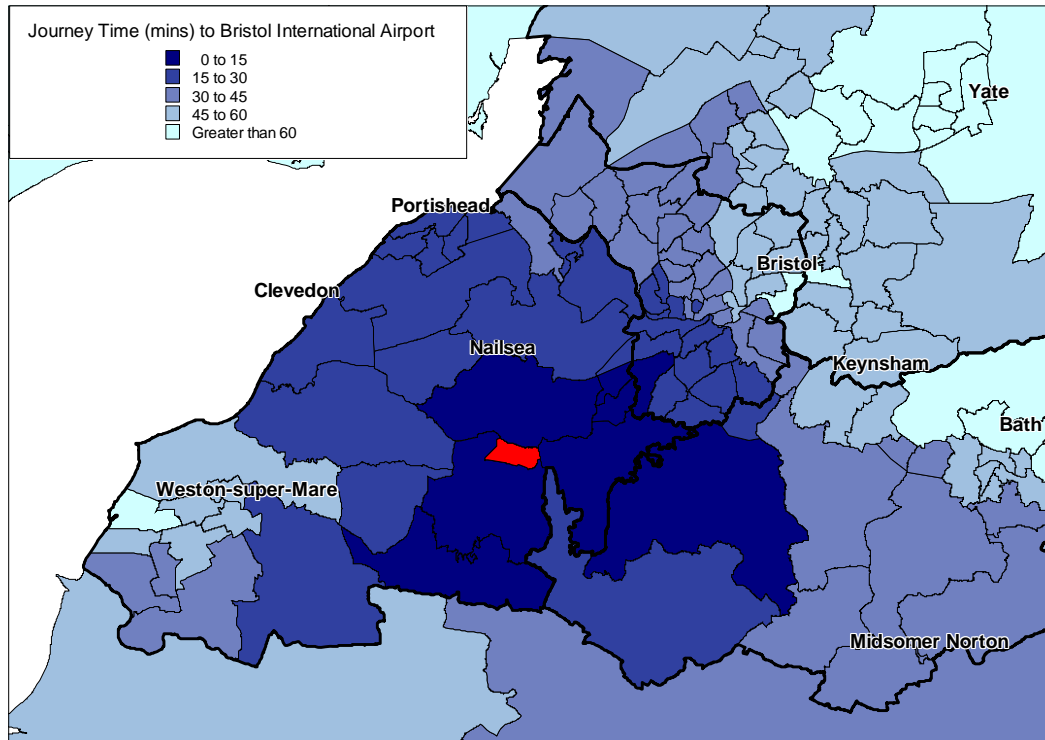


Figure B.32 – GBSTS Strategy Car Journey Times to BIA

