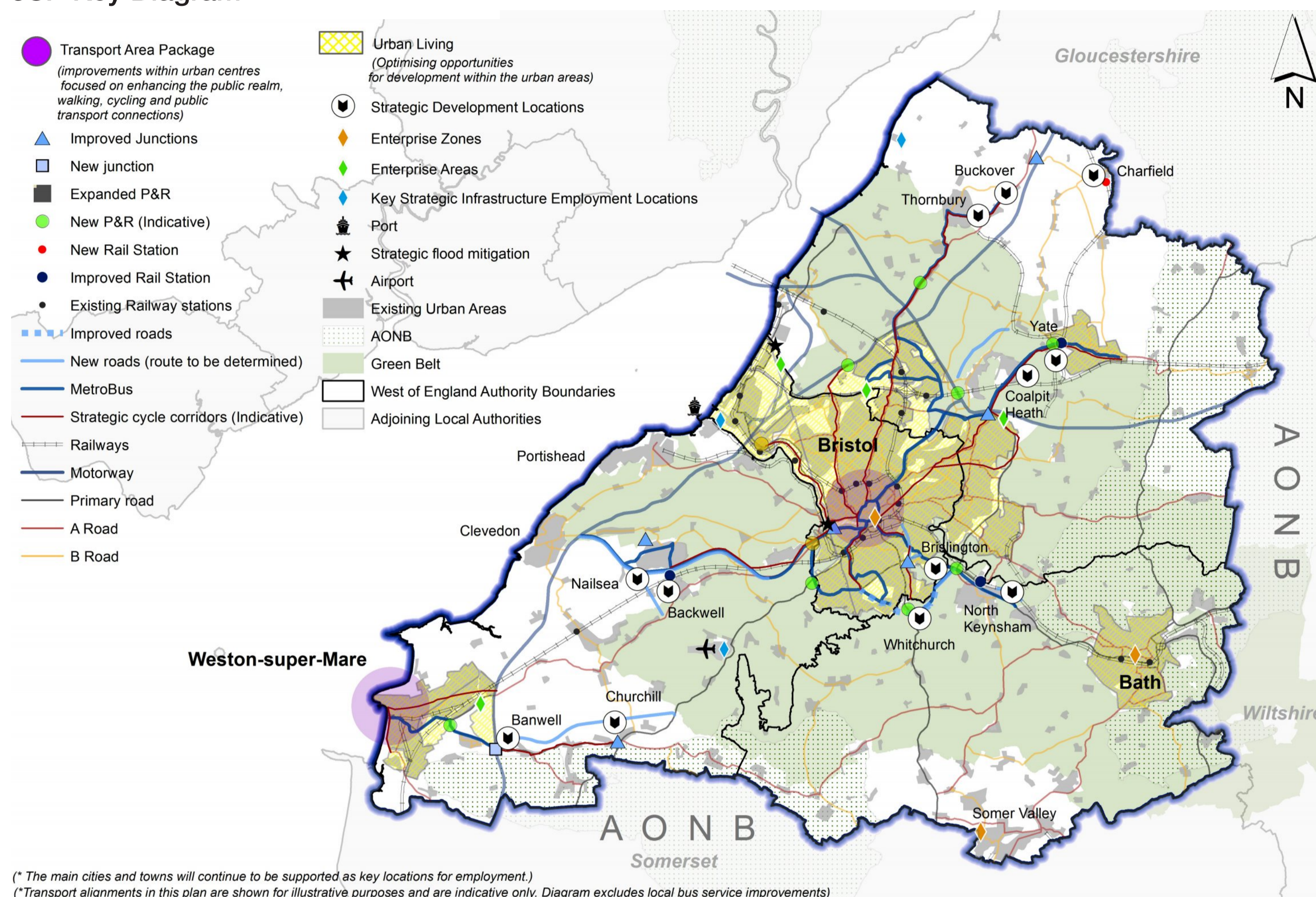
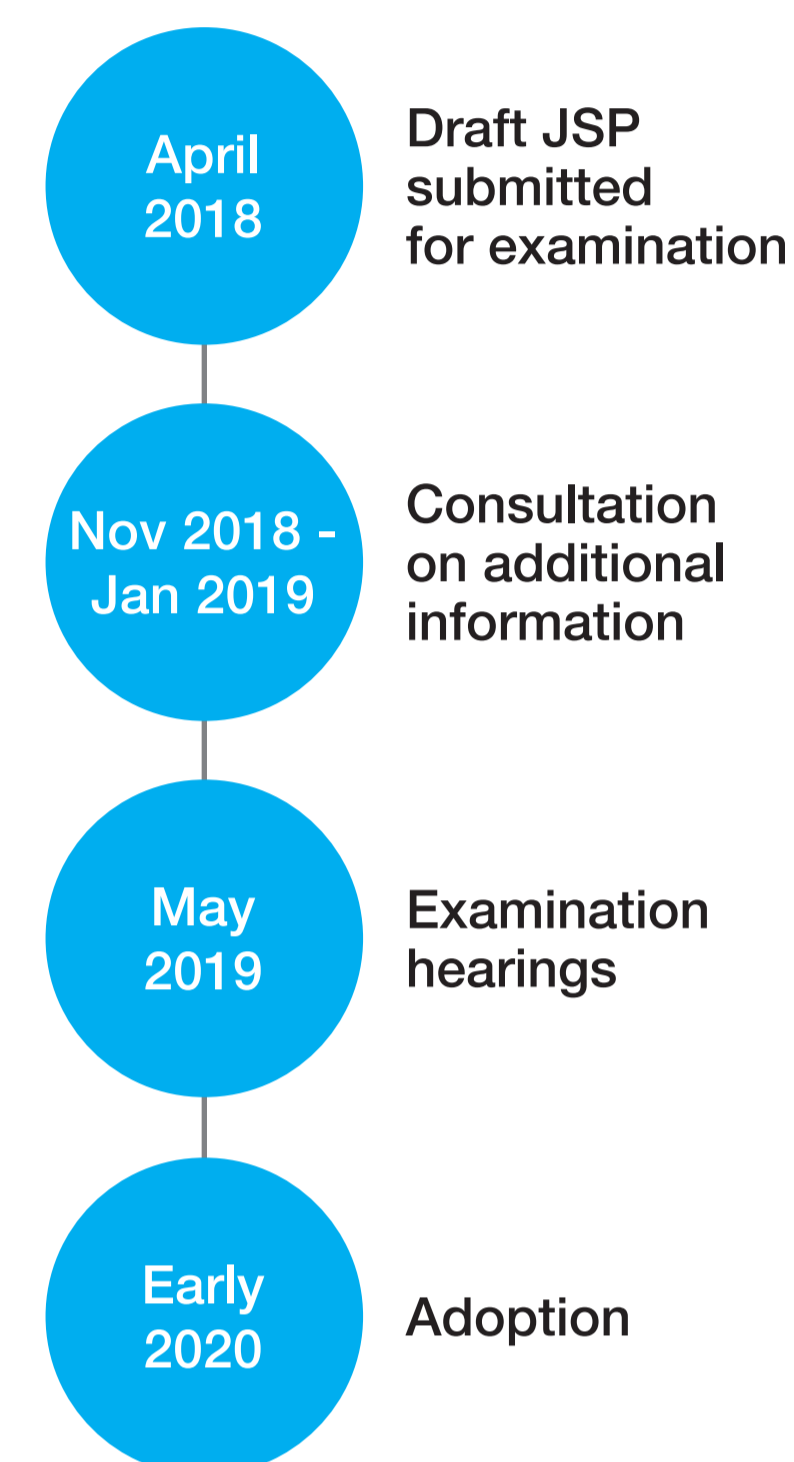


Joint Spatial Plan 2016-2036

JSP Key Diagram



JSP timetable



The West of England faces a key challenge; how to accommodate and deliver much needed new homes, jobs and infrastructure whilst protecting and enhancing our unique and high quality built and natural environment.

The four West of England Authorities have joined forces and prepared a Joint Spatial Plan (JSP) to address this challenge.

The Draft JSP is now at ‘**examination stage**’. Following an initial review, independent Inspectors leading the examination have requested that additional work be carried out and made public. This includes updates to the Sustainability Appraisal, Habitats Regulation Assessment, transport, viability, employment, strategic development locations, the Duty to Cooperate and some wording changes.

JSP consultation

Consultation on these JSP updates is running parallel with the B&NES Local Plan Options consultation - ending on 7 January 2019 – but is a separate consultation.

To find out more about the JSP consultation and how to comment, visit: www.jointplanningwofe.org.uk

What the JSP means for the Local Plan

The B&NES Local Plan is being prepared within the context of the JSP, covers the same period (2016-2036) and will support its delivery. This includes:

Housing: the Draft JSP proposes a requirement to plan for 14,500 new dwellings in B&NES by 2036. Assuming housing on existing committed sites is delivered, the Local Plan needs to plan for an additional 4,700 new homes. These homes will be provided at the Strategic Development Locations (at Whitchurch and North Keynsham) and through urban intensification in Bath. The remaining new homes needed will be provided across the rest of B&NES - principally in the Somer Valley and rural areas.

Employment: in the context of the strategic housing requirement set by the JSP it is estimated that provision should be made for around 12,500 jobs (net additional) in B&NES. Key locations identified in the Draft JSP are the Bath City Enterprise Zone, the Somer Valley Enterprise Zone and the SDLs at North Keynsham and Whitchurch.

