

Proposed Modifications No.  
Policy  
Recommendation Number  
Extract From

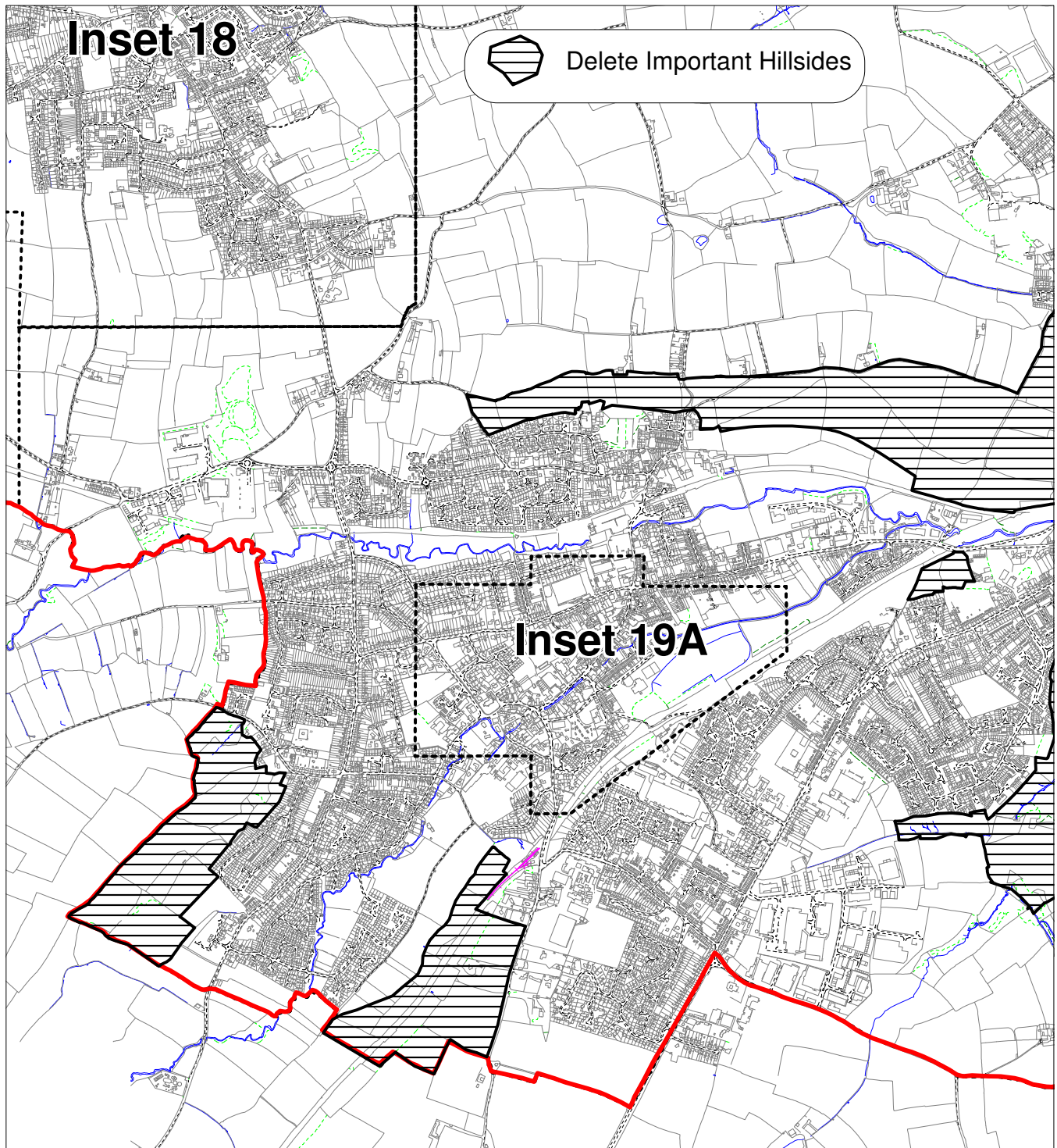
**M/C2/11**

**NE.3 (Important Hillside at Norton Radstock)**

**R10.3**

**Inset 19 (Western Part) & 19A**

NOT TO SCALE



Reproduced from the Ordnance Survey mapping with the permission of the Controller of Her Majesty's Stationary Office  
© Crown Copyright. Unauthorised reproduction infringes Crown copyright and may lead to prosecution or civil proceedings.



License number LA 06054L

PLEASE NOTE For detailed boundaries, this modification should be viewed  
with the Proposals Map Local Plan Deposit Draft 2002 + Revised Deposit Draft Changes to Proposals Maps 2003