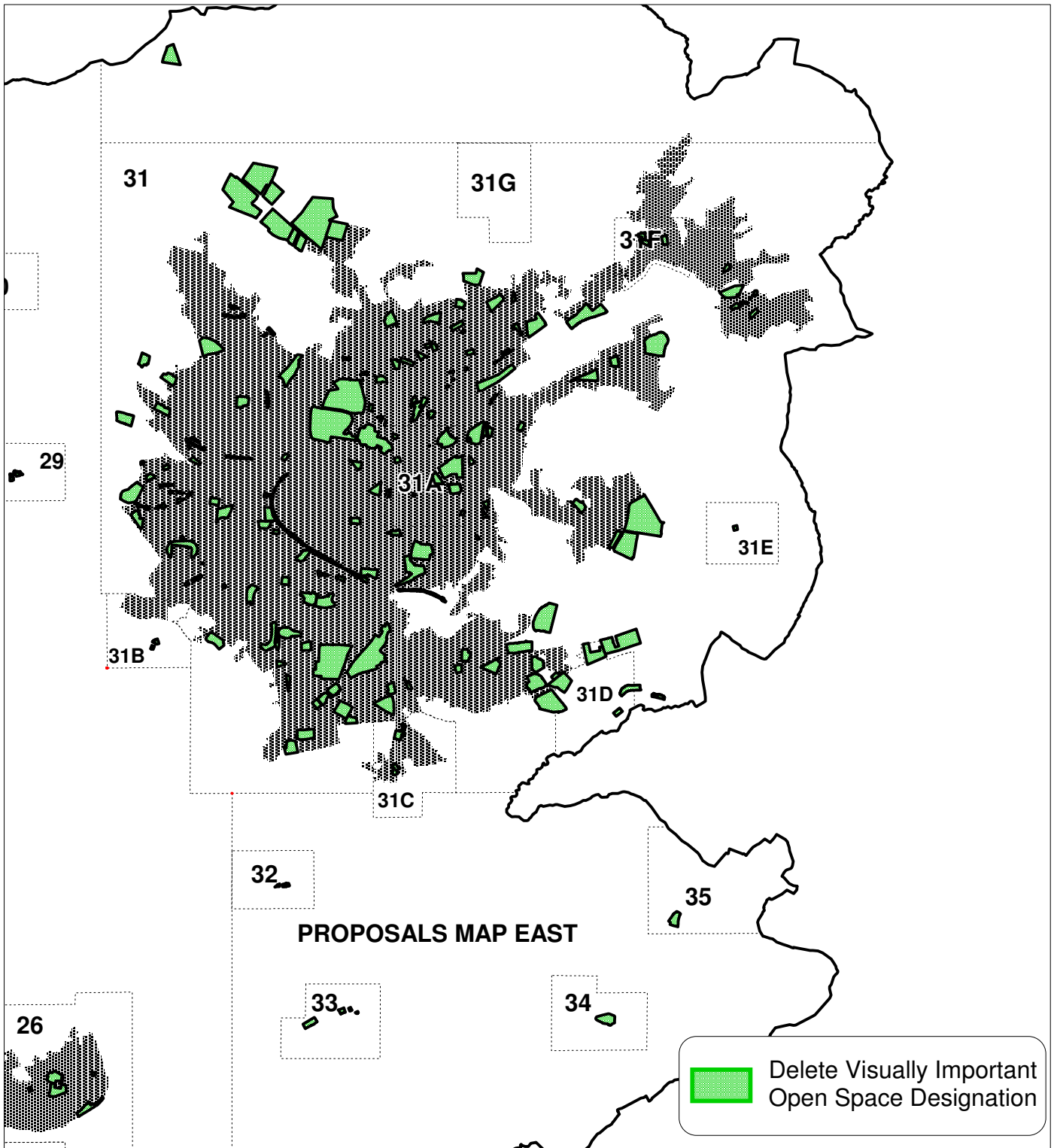


Proposed Modification No. **M/C3/31**
Policy **BH.15**
Recommendation Number **R11.19**
Extract From **Proposals Map East & Insets 31 - 35**

NOT TO SCALE



Reproduced from the Ordnance Survey mapping with the permission of the Controller of Her Majesty's Stationary Office
© Crown Copyright. Unauthorised reproduction infringes Crown copyright and may lead to prosecution or civil proceedings.
License number LA 06054L



PLEASE NOTE To see how detailed boundaries relate to an Ordnance Survey base Map, these changes should be viewed with the Proposals Map Local Plan Deposit Draft 2002 + Revised Deposit Draft Changes to Proposals Maps 2003