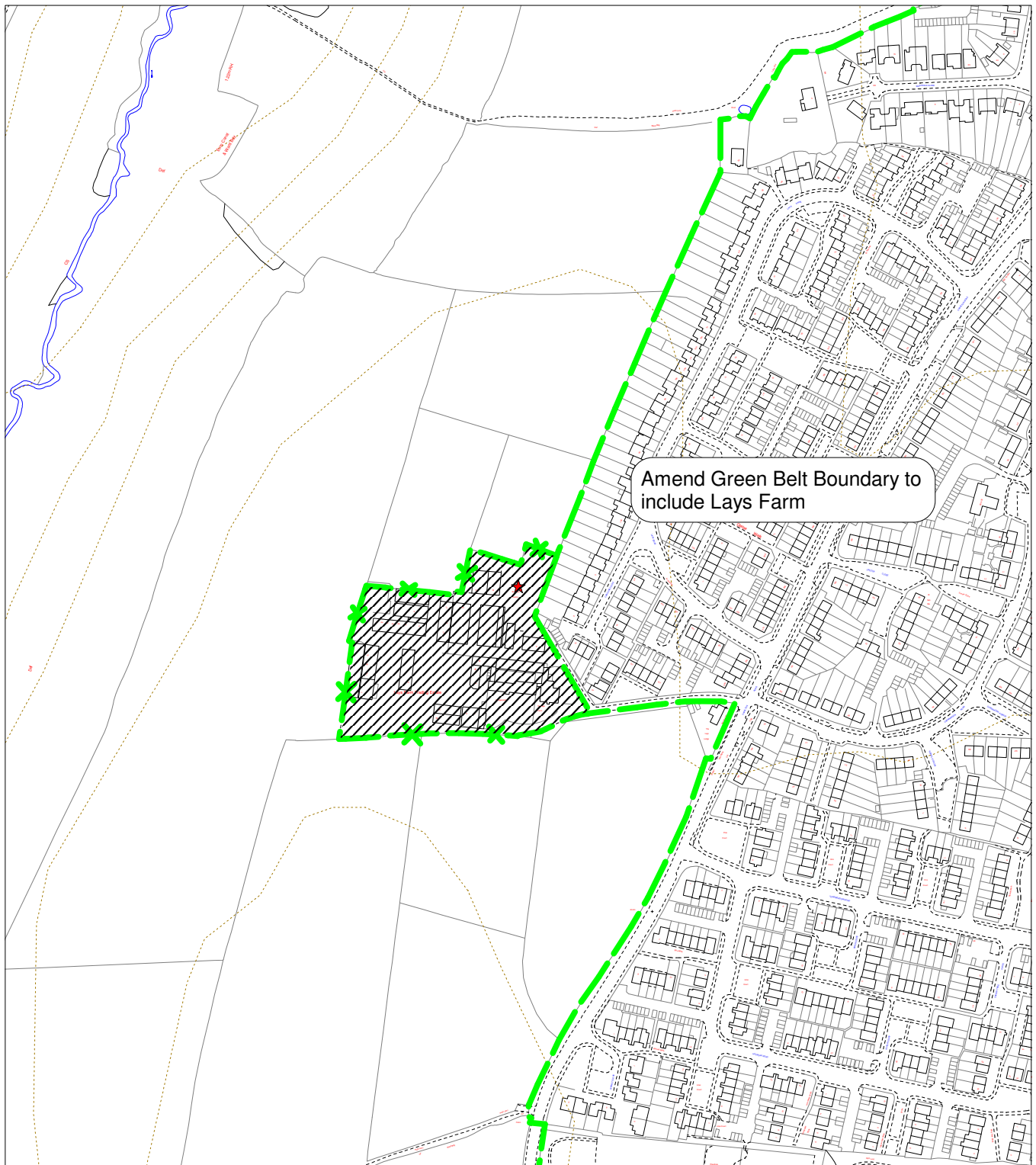


Proposed Modifications No. **M/C1/21**  
Policy **GB.1**  
Recommendation Number **R5.26**  
Extract From

NOT TO SCALE

**Proposals Map Inset 11 (Keynsham & Saltford)**



Reproduced from the Ordnance Survey mapping with the permission of the Controller of Her Majesty's Stationary Office  
© Crown Copyright. Unauthorised reproduction infringes Crown copyright and may lead to prosecution or civil proceedings.



License number LA 06054L

PLEASE NOTE This change should be viewed with the Proposals Map Local Plan Deposit Draft  
2002 + Revised Deposit Draft Changes to Proposals Maps 2003