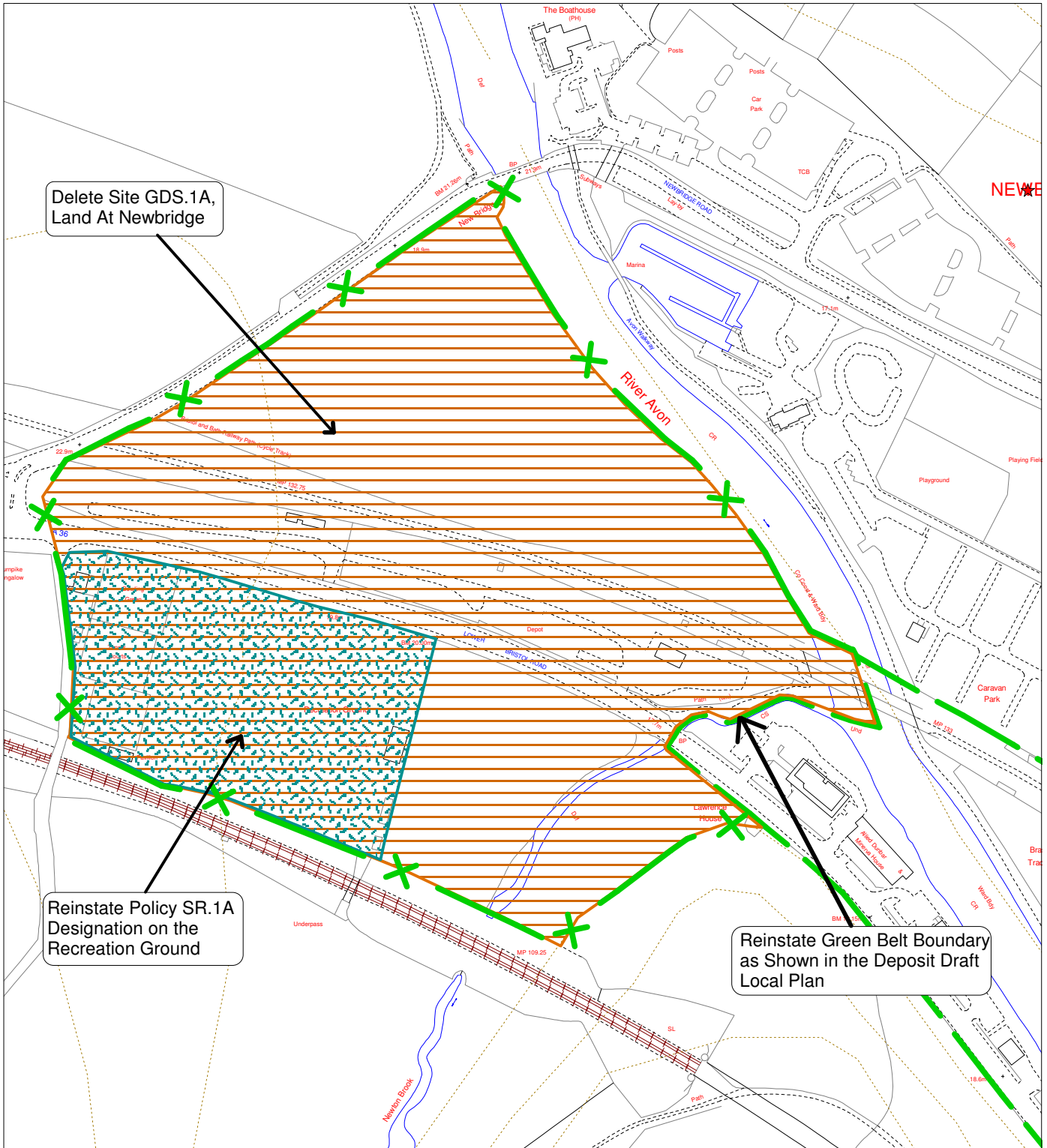


Proposed Modifications No. **M/B9/9**  
Policies **GB.1, GDS.1/B1A & SR.1A**  
Recommendation **R7.8 & R7.9**  
Extract From **Proposals Map Inset 31 (Bath City & Environs)**

NOT TO SCALE

Land at Newbridge



Reproduced from the Ordnance Survey mapping with the permission of the Controller of Her Majesty's Stationary Office © Crown Copyright. Unauthorised reproduction infringes Crown copyright and may lead to prosecution or civil proceedings.



License number LA 06054L

PLEASE NOTE This change should be viewed with the Proposals Map Local Plan Deposit Draft 2002