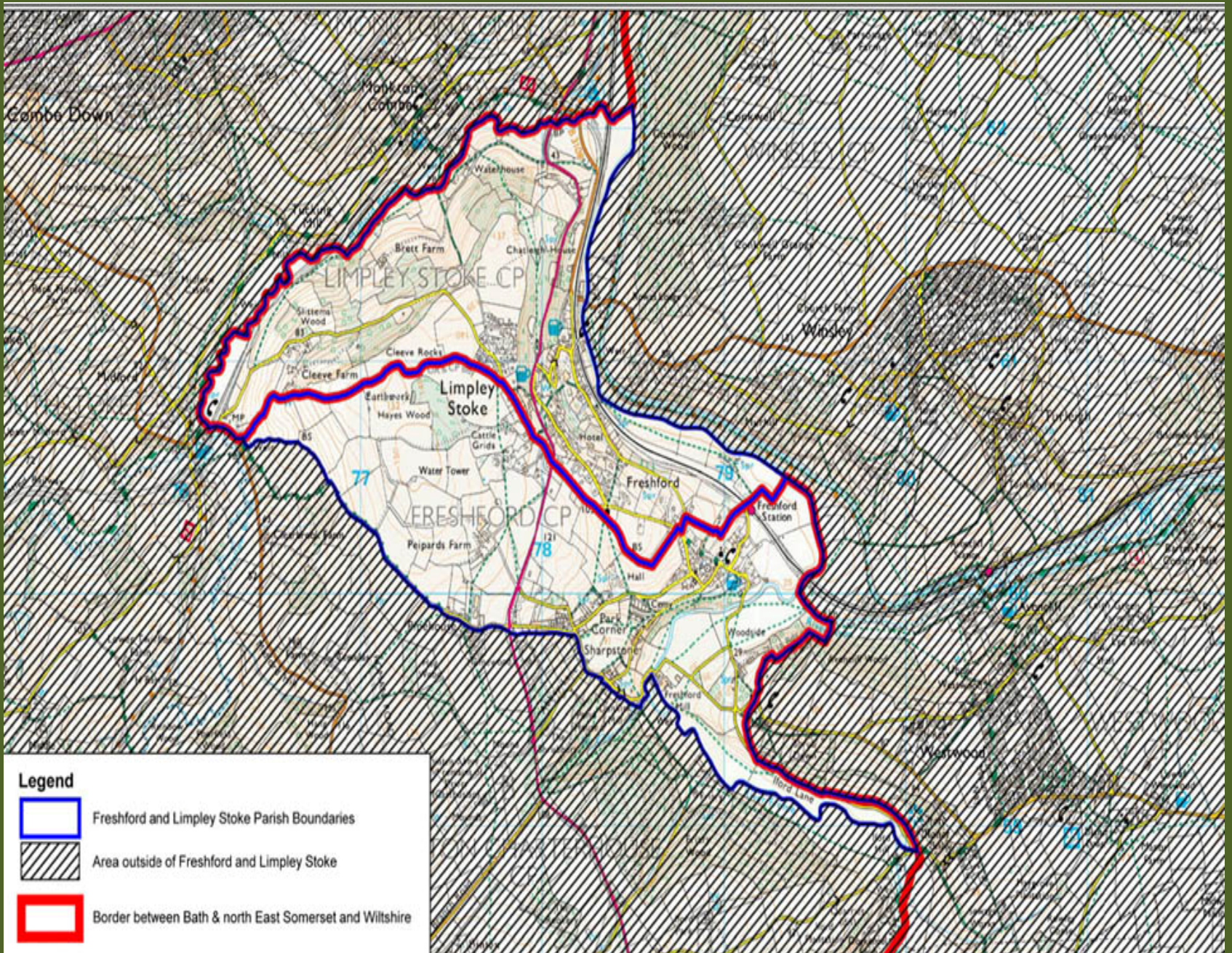


Freshford & Limpley Stoke

Initial Neighbourhood planning experiences





Background

	Freshford	Limpley Stoke
Foundation	Saxon times	Saxon times
Number of residents	530	640
Number of houses	240	260
Distance from Bath	7 miles	6 miles
Green belt	Yes	Yes
AONB	Yes	Yes
Housing d/ment boundary	Yes	No
County	B&NES	Wiltshire

Shared facilities

- United parish of three churches
- Doctor's surgery
- Primary school
- Village halls
- Annual village fete
- Community shop
- Pre-school
- Link/ WI/ tennis club/ horticultural society.....

“One community divided by a county boundary”

Shared projects

- FLiSCA charity
- Valley Parishes Alliance
- Road calming measures
- Affordable housing
- Neighbourhood planning...

Journey towards a Neighbourhood Plan

- Affordable housing project
- Freshford Memorial Hall redevelopment
- Prince's Foundation grant for community workshops
- “Front-running” grant application
- Community workshops
- Success in being awarded £20k grant

Key issues addressed in kick-off meeting

- Establishment of steering committee
- Agreed governance of finances
- Discussed scope of neighbourhood plan
 - planning & non planning issues
 - areas for development and areas for no development
 - land outside boundaries
- Goal for completion: June 2013

Anticipated process

1. Initiate plan by Freshford/ Limpley Stoke Parish Councils
2. Prepare plan with council assistance
3. Extensive community engagement
4. Examination by independent examiner
5. Referendum
6. Neighbourhood plan adopted by B&NES & Wiltshire Council as a Development Plan document

Advantages of a Neighbourhood Plan for Freshford/ Limpley Stoke

- Not to get “lost” between two core strategies
- Redefine community centre
- Facilitate existing developmental projects
- Balance limited development with the protection of rural environment
- Provide updated strategic plan for two parish councils
- Take control of our own destiny with a Development Plan