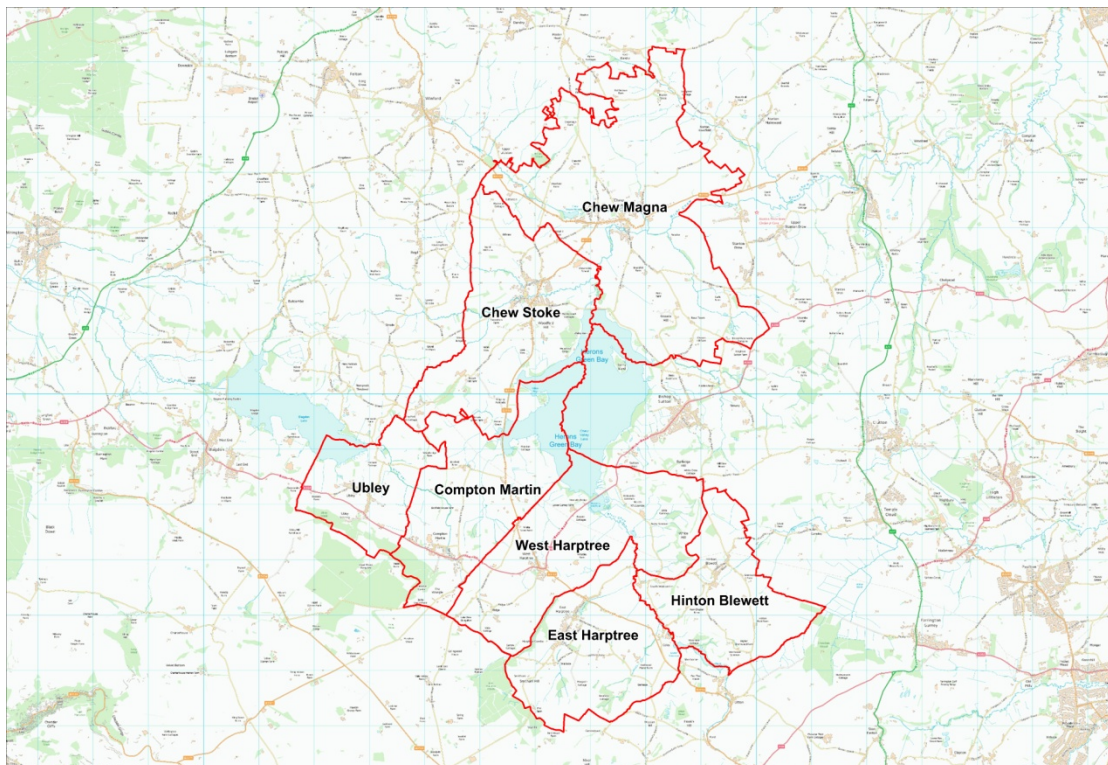


The Neighbourhood Planning (General) Regulations 2012

Application for Designation of Chew Valley Neighbourhood Area

We have received an application for the designation of the Chew Valley Area as a neighbourhood area from the Chew Magna, Chew Stoke, Ubley, Compton Martin, West Harptree, East Harptree and Hinton Blewett Parish Councils.



Reproduced from the Ordnance Survey mapping with the permission of the Controller of Her Majesty's Stationary Office © Crown Copyright. Unauthorised reproduction infringes Crown copyright and may lead to prosecution or civil proceedings. License number 100023334

Proposed Chew Valley Neighbourhood Area

You can view and make comments on this proposal on our website at:
www.bathnes.gov.uk/neighbourhoodplanning

You can also make comments by email (planning_policy@bathnes.gov.uk) or by writing to us at Planning Policy (Neighbourhood Planning), PO Box 5006, Bath, BA1 1JG.

THE CLOSING DATE FOR COMMENTS IS: 17:00 12TH MARCH 2014