

Next steps in developing
the Freshford and
Limpley Stoke
Neighbourhood Plan

How you can make
your contribution

Freshford & Limpley Stoke
Your Neighbourhood Plan



Introduction & Executive Summary

Freshford & Limpley Stoke Parish Councils have decided to develop a Neighbourhood Plan which will provide a legal basis for residents to determine the future for our community: where we want to develop - and where we don't. We have already been successful in being awarded a grant and therefore have the resources to make a plan worthy of this exceptional community.

Community workshops held in February 2012 have already identified many of our residents' issues and the interim report summarising this work is available on both Parish Councils' and Galleries Shop websites.

We are setting up four working groups to consider the key areas integral to this plan, namely:

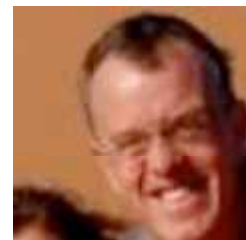
- ▶ Environment, green belt & the local landscape
- ▶ Planning & development
- ▶ Facilities & services
- ▶ Transport & movement

We are looking for residents to join these working groups and help develop ideas about the community's future. Please complete the form on the back and the kick-off meeting will be taking place in the Memorial Hall at **7.30pm on Wednesday 26th June**. As the plan develops further community meetings will be taking place to get resident's feedback and comments.

If you have any questions, please contact:



*Nick Stevens - Chairman, Freshford PC
njsfreshford@googlemail.com*



*Simon Combe, Limpley Stoke PC
simonhjcoombe@hotmail.com*



Courtesy of Freshford Pre-school

Why have a Neighbourhood Plan?

Where do we start?

You may have heard about the Government's new Localism Act and National Planning and Policy Framework (NPPF) which make important changes to the way in which planning works across the country. Part of that process is the much greater contribution that local communities will be able to make through the development of their own Neighbourhood Plan. In this booklet, being sent to every household in the two villages, we will be explaining what these changes will mean, and setting out a timetable for our plan of work over the next eighteen months. There will be periods of consultation during that time to gain residents' views. We also want people to be fully involved, and we

will explain how you can contribute to the process.

At the beginning of this year we held a number of community meetings and workshops to get people thinking about how we want our villages to develop in the future, both to preserve all that is best, and to see what, if any, changes need to be considered to meet present and future demands. Whilst an interim report has been produced which we can use to help our discussions, it is now for the community to consider and decide what is included in the Plan.

New Planning proposals

Formal planning decisions for Freshford and Limpley Stoke are made by the Local Planning Authorities - Bath and North East Somerset (B&NES) and Wiltshire Council. They are both producing new Local Plans, which when agreed, will be the basis of all planning proposals across the whole of the two Authorities' areas.

Under the Government's new regulations, local communities can also produce their own neighbourhood plan to provide more detailed proposals for their locality. These plans will be reviewed and checked by the Local Planning Authority and independent government inspector; ultimately they will be put to the local community in a referendum. When they are finally agreed and adopted, they will become an integral part of the planning process; they will have a legal basis and will become a formal part of future decision making, especially in considering planning applications.

On behalf of our two villages, B&NES and Wiltshire Council applied to the Government for special funding to assist in the preparation of our Neighbourhood Plan, and this has been granted.

Next steps - how you can help

We are proposing to set up four working groups which will consider the key areas integral to the plan. They are set out in more detail in the following pages of this booklet and they follow the same four themes as those used in the workshops and open meetings earlier in the year. We hope that we can cover the issues raised earlier, and the major areas of concern across the community. Whilst the formal management of the plan's development must remain with the two parish councils, we want members of the community to play major roles in the four working groups. There will be specific times

set aside for community consultation; this means that every resident in the two villages will have an opportunity to comment, if they wish, and to see how the Plan is developing before it is agreed and published.

The work of the four groups

On the back page of this booklet you will find a form to express your interest in being part of the work of the four groups. If you would like to be part of the working groups, you are asked to show which two areas of activity would most interest you, and to rank them first and second. We are very keen to have active participants in the groups.

We will be holding an open meeting on the **26th June, 2012 at 7.30 pm in Freshford Memorial Hall** to set the working groups up, to discuss how they will be managed, and to review the timetable. Because we have been granted government funding, we are proposing to pay a coordinator to support and manage the work of the groups.

At the end of this booklet we have set out our draft timetable for completion of the Neighbourhood Plan; we expect the working groups to function over the period July to November this year, and it will be for each group to decide how and when they meet under the guidance of the coordinator.

Please do become part of this development if you can; this is a very important opportunity for us all to plan for the future, in a way which meets the needs and aspirations of our whole community, and which protects and enhances the beautiful surroundings in which we live. Please join us as we plan for the future.



Environment, Green Belt and the local Landscape

We want to protect and enhance our natural, built and historic environment within the Green Belt, Area of Outstanding Natural Beauty, and Local Conservation Areas. At the same time we want to live in a vibrant community, which provides for and supports people of all ages. We will need to consider

- ▶ Continued protections for the Green Belt, preserving the rural character of the community;
- ▶ How the Tynning can be a 'Village Green' open to all;
- ▶ Supporting local agriculture and the preservation of trees, woods, the open countryside and the farming and wild life it supports;
- ▶ Considering approvals for limited development that the community supports, while protecting our environment;
- ▶ Using natural resources with care, minimising waste and pollution, and encouraging the use of renewable energy.



Planning and Development

We want to drive and support sustainable development which delivers homes, businesses and infrastructure, helping our community to flourish as it meets present and future demands. We will need to consider

- ▶ How we can provide affordable housing, and homes suitable for the elderly;
- ▶ Identifying areas where employment opportunities, business and housing development can be supported, but not in a way which jeopardises Conservation Areas, the Green Belt, or our rural surroundings;
- ▶ Improving access to open spaces, and developing links between important hubs within our communities;
- ▶ Maximising the use of buildings, including those currently underutilised, and providing improved space for community use.



Facilities and Services

We want to improve health, social and cultural wellbeing for all, and ensuring facilities and services are in place to meet local needs. We will need to consider

- ▶ Developing a joint village hub, which will include, if possible, proposals for an improved community hall, together with the pre-school and shop, and the surgery;
- ▶ Developing and improving communications infrastructures, including mobile phone networks and broadband;
- ▶ Support for small and medium sized businesses;
- ▶ Improved provision and space for children and young people; this could include facilities at Browns Field;



Transport and Movement

We want to create a safe environment for traffic on roads, pedestrian movements, cyclists, and accessible public transport. We will need to consider

- ▶ How pedestrian movement can be improved on the A36 in terms of speed limits and pedestrian crossings;
- ▶ Encouraging 'shared space' initiatives, including 'virtual' pavements;
- ▶ Developing footpaths and cycle ways and possible river bridges;
- ▶ Encouraging and supporting public transport, and its regular use;
- ▶ How to discourage 'rat runs';
- ▶ Resolving car parking problems across both village areas.

Freshford & Limpley Stoke Planning Process

	Draft Timetable
<i>June 2012</i>	<i>Open meeting to start work on the four Theme Groups</i>
<i>July - October 2012</i>	<i>Working groups meet to discuss and prepare Plan content</i>
<i>November 2012</i>	<i>First draft of Plan prepared</i>
<i>December - January 2013</i>	<i>Consultation process across the two Villages involving all residents</i>
<i>End January 2013</i>	<i>Draft Plan submitted to B&NES and Wiltshire Councils</i>
<i>February 2013</i>	<i>Plan examination by Independent Inspector</i>
<i>March 2013</i>	<i>Feedback and results of the Inspection leading to possible Plan amendment and further consultation</i>
<i>June - July 2013</i>	<i>Referendum and adoption of Plan in the two Villages</i>
<i>October 2013</i>	<i>Approval of the Plan by B&NES and Wiltshire Councils</i>

Membership of the four 'Theme' Working Groups

Please complete the form below if you would like to be a member of one of the four working groups which will be meeting to consider and prepare plan content. The first joint meeting of the four groups to start the process will be on **Tuesday 26 June at 7.30 pm in Freshford Memorial Hall.**

NAME:

ADDRESS:

Telephone contact details:

Email:

Theme Group preferences

1st choice _____

2nd choice _____

Please deliver this form to Galleries Village Shop, or reply by email to ingrid.freshfordpc@gmail.com by 24th June 2012.

Other ways of contributing to the Plan and getting involved

The Parish Councils are keen to hear from residents who may have ideas or comments they wish to feed into the Working Groups' process, but who are not members of the groups themselves.

Such contributions will be very welcome and can be passed to any of the Parish Councillors for Freshford and Limpley Stoke over the period July to September. Councillors will be pleased to discuss those contributions.

Alternatively they can be emailed to ingrid.freshfordpc@gmail.com



