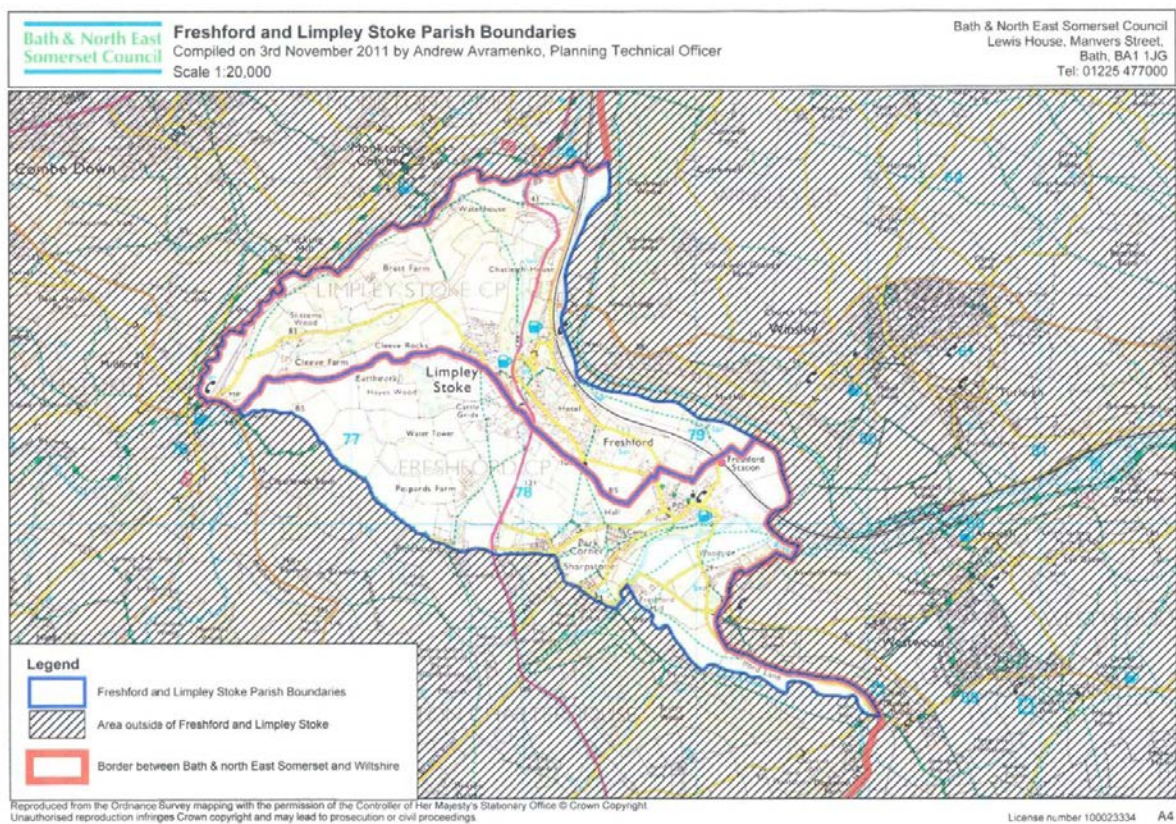


The Neighbourhood Planning (General) Regulations 2012

Application for Designation of Freshford and Limpley Stoke Neighbourhood Area

We have received an application for the designation of the Freshford and Limpley Stoke Parishes as a neighbourhood area from Freshford & Limpley Stoke Parish Councils.

This proposed neighbourhood area is also covered by Wiltshire Council, who are running a consultation on this application over the same time period.



Proposed Freshford and Limpley Stoke Neighbourhood Area

You can view and make comments on this proposal on our website at:
www.bathnes.gov.uk/neighbourhoodplanning

You can also make comments by email (planning_policy@bathnes.gov.uk) or by writing to us at Planning Policy (Neighbourhood Planning), PO Box 5006, Bath, BA1 1JG.

THE CLOSING DATE FOR COMMENTS IS: 17:00 THURSDAY 21st FEBRUARY 2013