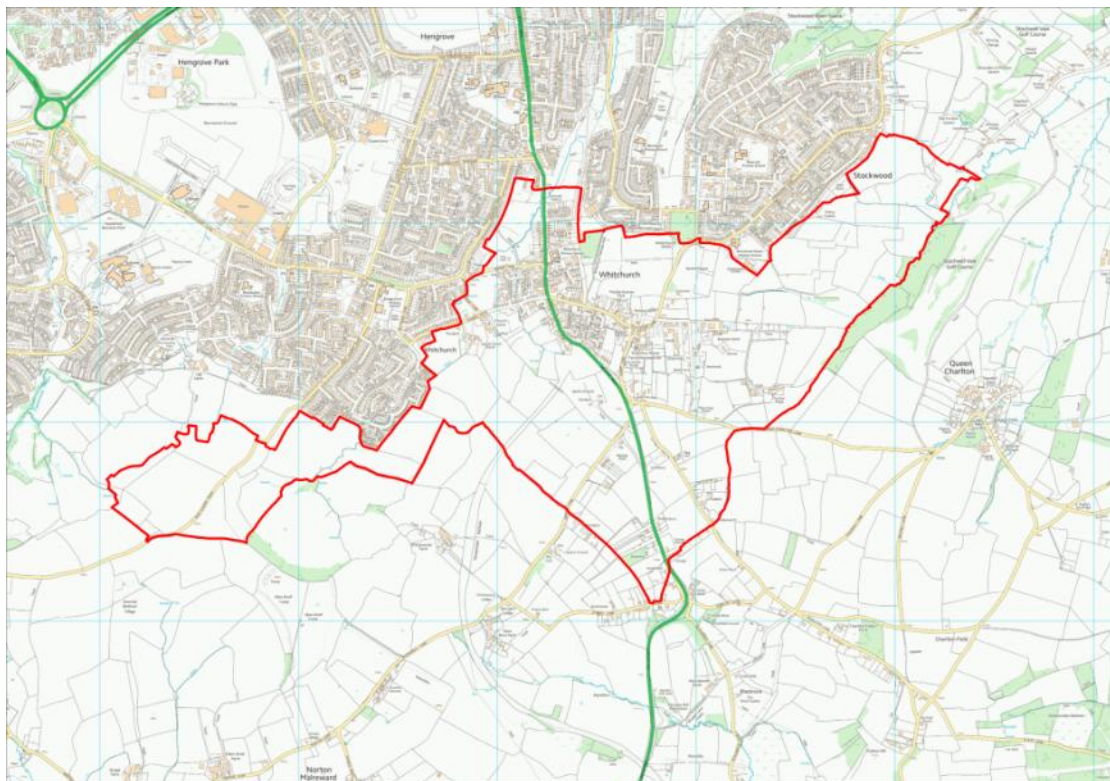


The Neighbourhood Planning (General) Regulations 2012

Application for Designation of Whitchurch Neighbourhood Area

We have received an application for the designation of Whitchurch Parish as a neighbourhood area from the Parish Council.



Reproduced from the Ordnance Survey mapping with the permission of the Controller of Her Majesty's Stationary Office © Crown Copyright. Unauthorised reproduction infringes Crown copyright and may lead to prosecution or civil proceedings. License number 100023334

Proposed Whitchurch Neighbourhood Area

You can view and make comments on this proposal on our website at:
www.bathnes.gov.uk/neighbourhoodplanning

You can also make comments by email (planning_policy@bathnes.gov.uk) or by writing to us at Planning Policy (Neighbourhood Planning), PO Box 5006, Bath, BA1 1JG.

THE CLOSING DATE FOR COMMENTS IS: 17:00 Wednesday 22nd October 2014