

Whitchurch Village Council's Consultation Statement

Introduction

This consultation statement has been prepared to fulfil the legal obligations of the Neighbourhood Planning Regulations 2012. Section 15(2) of Part 5 of the Regulations sets out what a Consultation Statement should contain:

- a) Contains details of the persons and bodies who were consulted about the proposed neighbourhood development plan;
- b) Explains how they were consulted;
- c) Summarises the main issues and concerns raised by the persons consulted;
- d) Describes how these issues and concerns have been considered and, where relevant, addressed in the proposed neighbourhood plan

The Whitchurch Village Neighbourhood Plan (the Plan) is produced by the Parish Council under the Localism Act 2011 and the associated Regulations. This legislation requires Whitchurch Village Council to carry out a formal public consultation on the Plan for a minimum period of 6 weeks before submitting it to B&NES Council which is able to bring the Plan into force following independent examination and referendum.

In preparing the Plan the Parish Council has tried to go beyond the minimum requirements for community consultation required by law. The Plan has been produced by a Neighbourhood Plan Group made up of volunteers and Whitchurch Village Councillors from the community, drawing on support from Bath and North East Somerset Council (B&NES).

The process has involved a number of key steps:

Area Designation and Raising Awareness

In late 2014, Whitchurch Village Council and the perspective Ward Councillor decided to start the neighbourhood planning process and applied to B&NES in November 2014 to become a neighbourhood planning areas. On the 26th January 2015, Whitchurch Village Parish was formally designated as a neighbourhood planning area.

Initial Work

An open day was arranged for 7th October 2014 to launch the neighbourhood plan and to invite interested residents to volunteer to give up their time or skills. Over 100 residents attended and a number of issues were raised an independent website was also launched at this time:

On 6th November 2014, the first meeting with B&NES was held and the neighbourhood plan process and the next steps were discussed. The area application was also formally submitted to B&NES.

On the 14th December 2014, two joint chairs for the Neighbourhood Plan Steering

Group were appointed to take forward the Neighbourhood Plan. It was decided that the main focus of the group would be to give Whitchurch Village a voice and to ensure that new development would be integrated into the village.

- 2nd December 2014 meeting with B&NES to discuss the next steps and the scope of the Plan was discussed. Further the support and funding was also discussed.

Consultation and Evidence Gathering

In January 2015, the Steering Group and the Whitchurch Village Council agreed on an approach to take forward the neighbourhood plan, this included:

- To report back to the parish council at regular intervals and to abide by the parish financial regulations (which includes acquiring an appropriate number of quotes for work)
- To draft policies in consultation with the community
- To work with B&NES and to take the advice of B&NES
- To learn from neighbourhood parishes and through their experiences

In April 2015 the Whitchurch Village Neighbourhood Plan Steering Group organised a parish questionnaire which was sent to all houses within the parish (see Appendix 1). Over 50% of the residents responded and this gave the Steering Group a huge amount of evidence to use in the Plan (see Appendix 2 for analysis of the results). In addition, the Whitchurch Village Steering Group used the Parish Councils Placemaking Plan evidence base submissions as additional evidence for the Steering Group.

After the results from the questionnaire were received, the Steering Group established a number of themed groups with leads to take forward the evidence gathering work:

- Management Group (three members including a parish councillor)
- Finance Group
- Communications Group (including the website updating)
- Providing a new community shop
- Business and Economy
- Environment
- Planning and Development (including housing)
- Connections and Safe Routes
- Green areas/ecology
- Community Facilities

On 9th March 2015, members of the Steering Group attended an Association of Local Councils presentation where the Group meet with David Johnson, Senior Lecturer at the University of the West of England (UWE). As a result the in April 2015, the Whitchurch Village Steering Group commissioned three students from the UWE to undertake a 'character and design appraisal' of the village. The Students were final years students on a BA Architecture and Planning degree course and they spent six weeks working on the Whitchurch Village Design Statement.

In addition, a meeting was held with Mick Duggan from Department for Communities

and Local Government to discuss the impacts of growth from the City of Bristol and how it could impact on Whitchurch Village. The Steering Group found this very useful and helped them to understand the scope of a Plan and the external factors which could impact on the plan in the future.

On the 19th May 2015, the students fed back to the whole village the outcomes of their character assessment work; around 100 people attended the event, including developers from the strategic allocations (see Appendix 3 for report of the meeting). This event was more formal than the October 2014 event and included details of how the neighbourhood planning process worked and the next steps for the parish. Further contact details of attendees were taken and the Steering Group was extended to allow further interested people to become involved.

In April 2016, the Whitchurch Steering Group commissioned three UWE students to undertake a feasibility study on a potential play space and recreational area in Whitchurch. This was commissioned in response to the comments raised from the consultation events and from the questionnaire.

On 16th June 2016, the students reported back to the Steering Group, to the Parish Council and to the wider community, the results of their community consultation).

Additionally, on 25th February 2016, nine students from UWE have been asked to undertake two projects revolving around:

- Looking at examples of villages in the same situation as Whitchurch Village and how the villages have grown with strategic allocation.
- Looking at Whitchurch Village as a whole and looking at whether there is any opportunity for growth in the future and what infrastructure would be required if the Whitchurch Village grows.

Parish Council Meetings

The Steering Group fed back to the Whitchurch Village Council on the following dates:

- 7th January 2015
- 3rd February 2015
- 4th March 2015
- 1st April 2015
- 3rd June 2015
- 1st July 2015
- 11th August 2015
- 14th August 2015
- 2nd September 2015
- 2nd December 2015
- 6th January 2016
- 3rd February 2016
- 2nd March 2016
- 7th March 2016

- 6th April 2016
- 4th May

Meetings with B&NES

The Steering Group and B&NES have been working together since the beginning of the neighbourhood plan process to ensure that the resulting Plan was in accordance with the B&NES Core Strategy and the emerging Placemaking Plan.

Dates of key meetings

- 23rd January 2015
- 24th February 2015
- 31st March 2015
- 7th April 2015
- 21st April 2015
- 12th May 2015
- 19th May 2015
- 5th June 2015
- 9th June 2015
- 15th June 2015
- 16th June 2015
- 29th June 2015
- 29th July 2015
- 19th July 2015
- 19th October 2015
- 17th and 18th November 2015
- 24th November 2015
- 9th December 2015
- 5th January 2016
- 28th January 2016
- 12th February 2016
- 29th February 2016
- 19th April 2016
- 6th May 2016
- 12th May 2016
- 16th May 2016

Collaboration with neighbouring parishes

Whitchurch Steering Group has tried to work with the neighbouring parishes and to keep them updated with the scope of the Whitchurch Village Neighbourhood Plan.

Dates of key meetings

- 15th June- Compton Dando parish
- 19th June-Publowlow with Pensford parish

- 29th June 2015-Keynsham Town Council
- 8th February 2016-Clutton Parish Council
- 18th March 2016-Publowl with Pensford Parish Council

Meetings with developers:

Although the Neighbourhood Plan cannot include information on the B&NES Core Strategy allocation, the steering group regularly kept in contact with the three sets of developers of the site and worked proactively with them to integrate the new development into the Whitchurch Village. These meetings centred on the design of the Masterplan and how to work with the wider community. The main issues raised were included safe pedestrian routes, parking, housing mix, bus routes and ecological routes. The Developers were also made aware of the emerging Whitchurch Village Neighbourhood Plan. During the community consultation on the emerging Masterplan, the Neighbourhood Plan were invited to be joint hosts during consultation and further information for the neighbourhood plan evidence base. With Barratt and Bellway there were pre-application discussions and meetings between the Parish Council and the Steering Group. It is hoped that this pro-active approach to working with developers would continue in the future.

Dates of key meetings

- 15th June 2015
- 27th July 2015
- 15th March 2016
- 30th March 2016

Consultation on initial draft and the steps to the final Draft Plan

The Steering Groups regularly reported back to the Management Group and the evidence from the groups was used to start drafting the final neighbourhood plan. In preparing the Plan a significant number of drafts were prepared, each version refining the previous one e.g. in terms of images included and minor textual changes. B&NES have also made comments on whether the neighbourhood plan is in conformity with the National; planning Policy Framework and the B&NES Core Strategy.

Regulation 14 Consultation on the Draft Plan

The Regulation 14 consultation was held between 24th January -7th March 2017. At this stage parish residents, local business and other key stakeholders, including statutory consultees and interested developers, were consulted.

Residents and local businesses were all consulted through hand delivery of information on the Whitchurch Village Neighbourhood Plan, which included a summary of the Plan objectives; the policy framework; and a questionnaire for completion. The information made it clear how the completed questionnaire and comments should be submitted (including through use of a stamped addressed

envelope which was supplied) and the date by which they should be received. Appendix 7 sets out the documentation supplied to all households/businesses.

The statutory consultees as listed below were also given the opportunity by email to comment on the Pre-Submission Draft of the Plan and in the case of the non-parish/town councils were also invited to consider and comment on the SEA/HRA screening:

- Neighbouring parish/town councils of Compton Dando PC; Publow with Pensford PC; Keynsham TC; and Norton Malreward PC
- B&NES Council
- English Heritage
- Environment Agency
- Natural England
- Highways Agency

Interested developers or their agents were also consulted by email i.e. Barton Willmore (Taylor Wimpey/Bovis); Pegasus Planning (Robert Hitchens); Savills (Horseworld); Barrett Homes and Bellway Homes.

Throughout the consultation period the Pre-Submission Draft Plan was held on deposit for viewing at Whitchurch Village Council office; the village dental surgery/practice (Sleep Lane); and at Lea Cottage, Norton Lane, Whitchurch. The availability of copies of the Draft Plan for viewing was made clear in consultation publicity material.

In addition at the start of the consultation period on 24th January 2017 a public meeting was held. This meeting and the consultation itself was advertised on parish council noticeboards and using social media (see details in Appendix 4). The meeting was attended by around 100 residents and minutes were taken setting out the issues raised (see Appendix 5). The meeting and consultation was also reported in the local media – see an article in The Week In attached as Appendix 6.

Comments were received from around 180 respondents. Appendix 8 sets out a summary of the comments raised, along with the results of their consideration by the Neighbourhood Planning Steering Group in terms of a brief response and the action taken in preparing the Draft Plan.

B&NES Council supported the Whitchurch Village Neighbourhood Planning Steering Group by informally commenting on various iterations. These comments were helpful in refining the Plan. The comments provided on the Reg 14 Pre-Submission Draft Plan are set out in Appendix 9. These have been considered in preparing the Plan submitted under Regulation 16.

In reviewing the comments received a number of editorial errors in the Reg 14

version of the Draft Plan were identified and Appendix 10 outlines the corrections made.

WHITCHURCH VILLAGE NEIGHBOURHOOD PLAN

www.wvnp.org.uk/home

HAVE YOUR SAY

Bath & North East Somerset Council require an additional 200 houses to be built at Whitchurch Village. We would like to know what type of housing you think this development of 200 houses is best suited/needed for our area and to help in this decision making we would like you all to have your say by taking just a few minutes to fill in the enclosed survey. The Neighbourhood Plan will provide us all with an opportunity to have some say on the environment around us and this Survey will form part of this Neighbourhood Plan. Please join in and be part of this process.

Our next important public meeting is on Tuesday 19th May from 7.00pm to 8.30pm at Whitchurch Community Hall (Next to United Reform Church on A37)

Please add any further comments you may wish to make after completing the Survey.

Jill Britten

Chair Planning Sub Committee

WHITCHURCH VILLAGE NEIGHBOURHOOD PLAN SURVEY- HAVE YOUR SAY April 2015

1. How long have you lived in the village? _____
2. How many people reside in your home in the following age brackets:

0-10

11-20

21-60

61-65+

3. Is your home rented or owned? Owned Rented

The impending development of 250 houses is a 50% increase in the size of village and will inevitably increase the need for more services. You can have a say on the content of this development.

4. What type of housing do you think is mainly needed within this development?

Rented Affordable/Social Bungalows

2-Bedroom 3-Bedroom 4-Bedroom 5-Bedroom

Are you looking to downsize/upsue your accommodation within the village? If so which of the above would best suit your need? _____

5. How many cars are used from your home? 0 1 2 3+

6. What area(s) do you work in? Bath Bristol (south) Bristol (north)

Keynsham Salford Midsomer Norton Portishead

Other – Please specify: _____ Would you like more local employment?

7. How do members of the household travel to work/school? Car Bus

Cycle Train Walk Other

Are the public transport options to travel to work adequate? Yes No

If No, please state why:

8. Would you use public transport if a service was available and reliable? Yes No

9. What services/amenities would you like to see improved for the village?

Safer Roads Doctors Surgery Green spaces Safe pedestrian routes

Cafe School Youth Services Creche/Pre School

shops/retail Solar Panels placed on roofs of Community Bldgs?

Other – please comment:

10. Do you see a need for further development in the village? Yes No

If yes please state where below. Please add any further comments if you wish:

11. The village is currently protected by the Green Belt. Is the Green Belt important to you?

Yes No



WHITCHURCH VILLAGE
NEIGHBOURHOOD PLAN

RESIDENTS SURVEY

APRIL-JUNE 2015

www.wvnp.org.uk

WHITCHURCH VILLAGE NEIGHBOURHOOD PLAN

SURVEY APRIL – JUNE 2015

Every household within the Village of Whitchurch received a Survey with a Stamped Addressed Envelope to submit the replies. The five hundred Surveys were hand delivered and the used pre paid envelopes recorded via Royal Mail.

A sample Survey is contained within and the questions asked related to the full range of personal information, work related information, travel options to work, housing issues of ownership, renting, downsizing/upsizing needs and availability within the village.

The percentage survey return of 50% was an excellent result and 251 results are summarised here.

Also, residents were asked to express their comments about the questions asked and these are printed out and contained within. These comments serve to reinforce the answers given on the Survey questionnaire.

The results have been processed into 12 easy to read graphs and a small written explanation for each is detailed in the following sections

Q1 How many years have you lived in the Village?

22% - 30+ years
17% - 15-20 years
16% - 0-5 years
14% - 25-30
13% - 5-10 years
12% - 10-15 years
06% - 20-25 years

The results on the graph illustrate the overall length of time people have resided in the Village with a high 40-45% having lived here for over 20 years.

Q2 Age groups in Village

53% are in the 20 -60 age bracket
32% are in the 65+ age bracket
15% are in the 0 -18 age bracket

This percentage explains the answers at Q4 and the need to downsize to a 2 bedroom house or bungalow

Q3 Is your home rented or owned?

92% - own their own property

This result would suggest an area of available wealth for home ownership

Q4 What type of housing is needed within the intended new development?

25% suggested 3 bedroom accommodation
20% suggested bungalows for downsizing
17% suggested affordable/social
14% suggested 2 bedroom
14% suggested 4 bedroom
5% suggested 5 bedroom
5% suggested rented accommodation

A fifth of residents expressed interest in downsizing in the area.

Q5 How many cars are used from your home?

97% of residents own one or more car.

Q6 What areas do you work in?

49% Work in South Bristol
20% Work in North Bristol
11% Work Bath

The remaining % (see pie chart) work in a variety of areas

Q6b Would you like to see more local employment?

78% Yes
22% No

Q7 How do members of the household travel to work/school?

60% use their cars
19% use the buses
13% walk
6% cycle
1% other
1% train

In the comments sheets residents complain bitterly about many aspects of bus services (lack of), unreliability, not versatile enough routes. Many suggested they would use the bus if the service improved. Please read comments and see Q8.

Q8 Are the public transport options to travel to work adequate?

61% say No
39% say yes

Q9 Would you use public transport if a service was available and reliable?

83% say yes
17% say no

83% of responders would like to use the bus but in the comments sheets you can see why the buses are not an option.

Q10 What services/amenities would you like to see improved for the village?

19% Safer Roads
17% Safe Pedestrian Routes
17% Green Spaces
13% Shop/Retail
13% Doctors Surgery
5% Café
5% Youth Services
4% School
4% Solar Panels
2% Early Years
1% Other – see comment sheets

Scoring highly are Safer Roads, Safe pedestrian routes, Doctors Surgery, however there was interest in all the options offered.

Q11 Do you see a need for further development in the village?

88% No

12% Yes

From the figures obtained there is a high percentage of the residential population that do not see the need for further development.

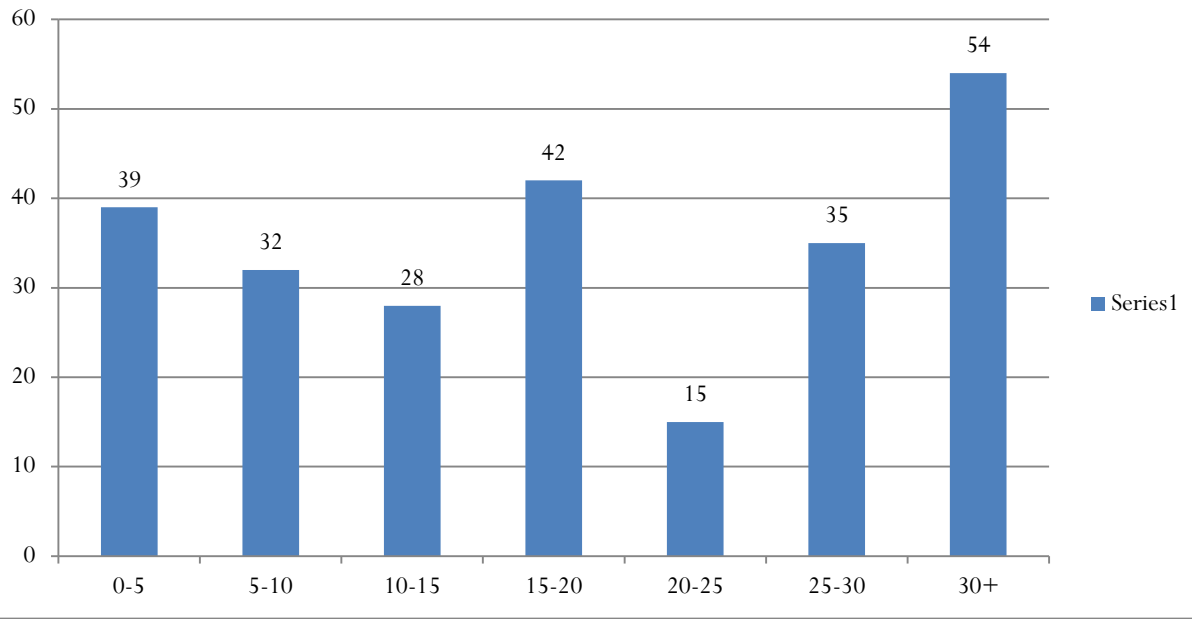
Q12 Is the Green Belt important to you?

98% said Yes

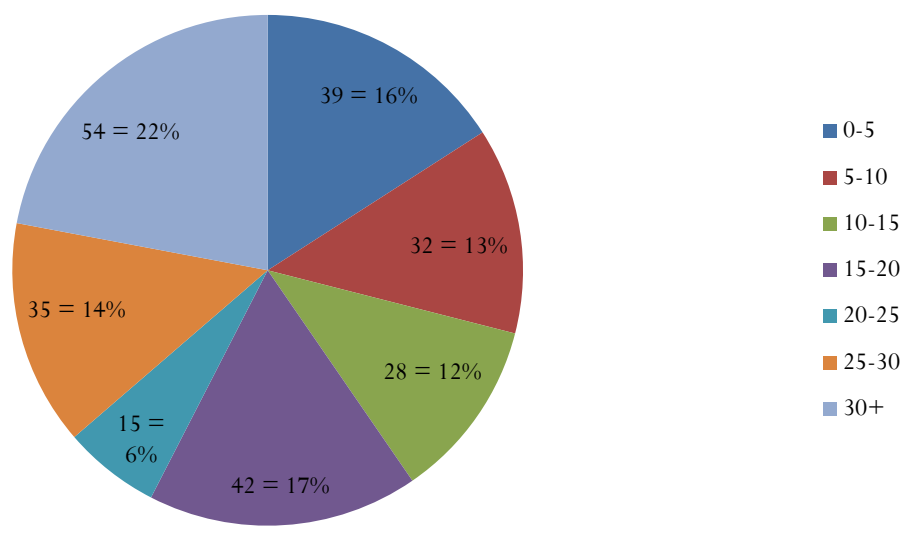
2% said No

A strong support of the Green Belt is shown from people living in the Village.

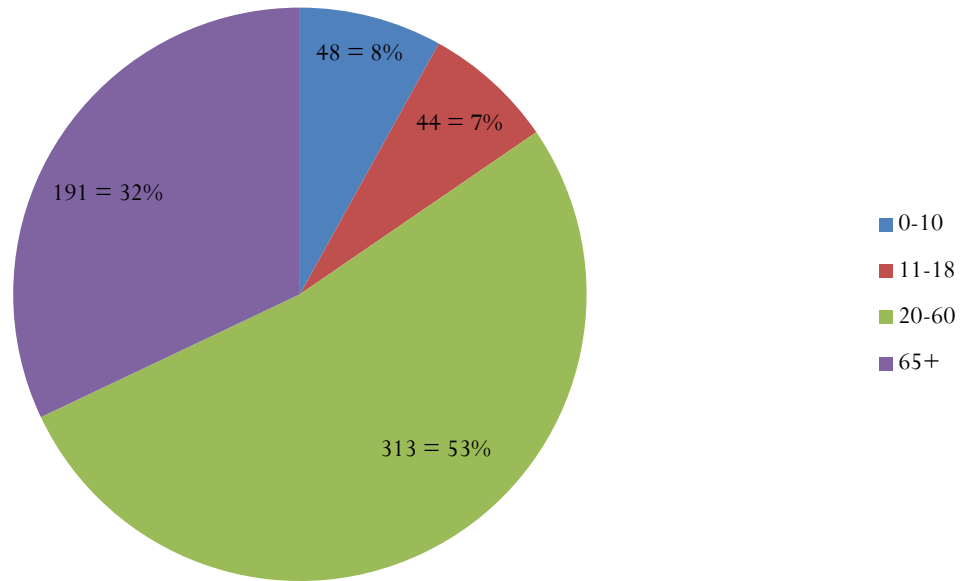
Q1. How many years have you lived in the village



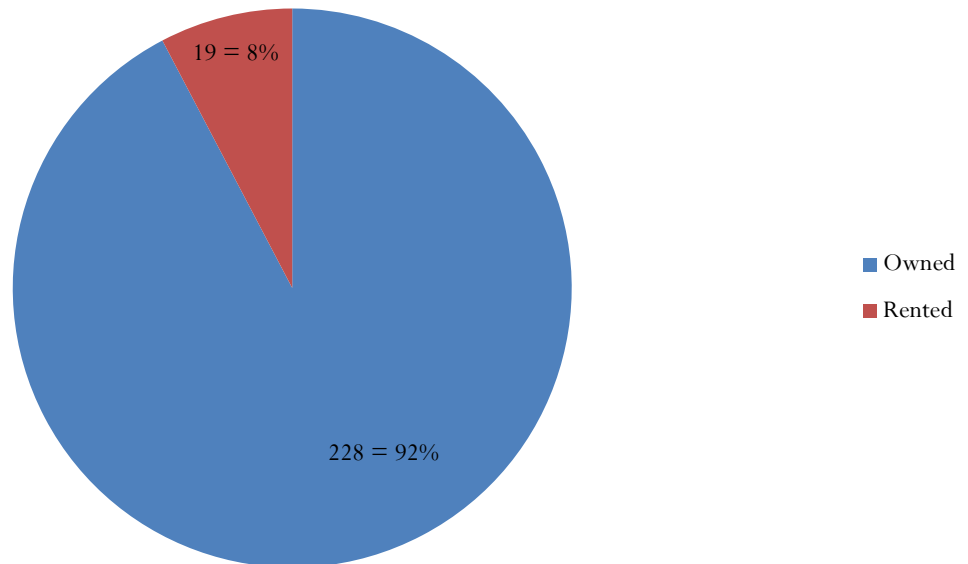
Q1. How many years have you lived in the village



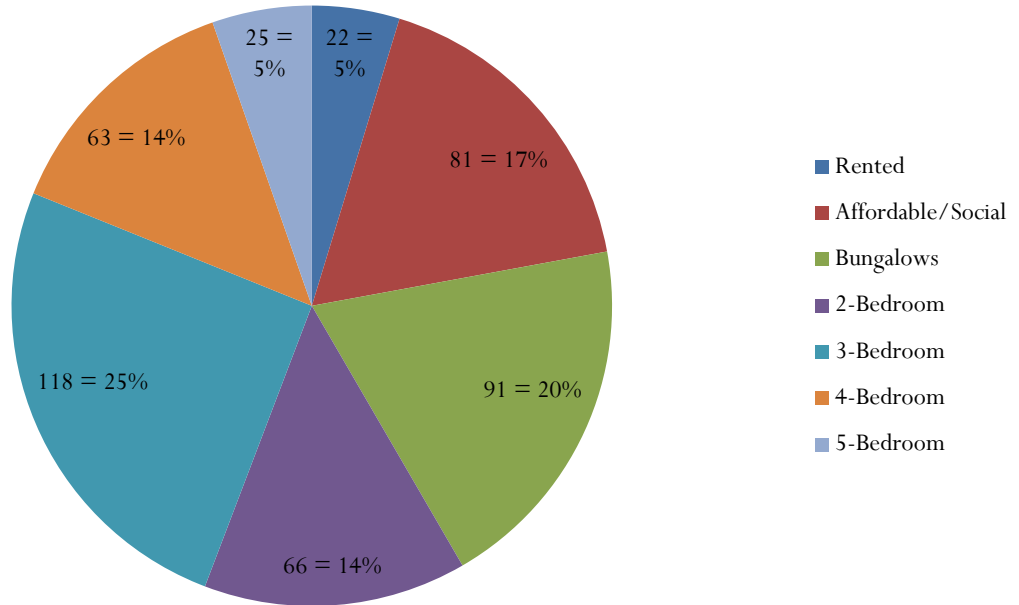
Q2. Age groups in village



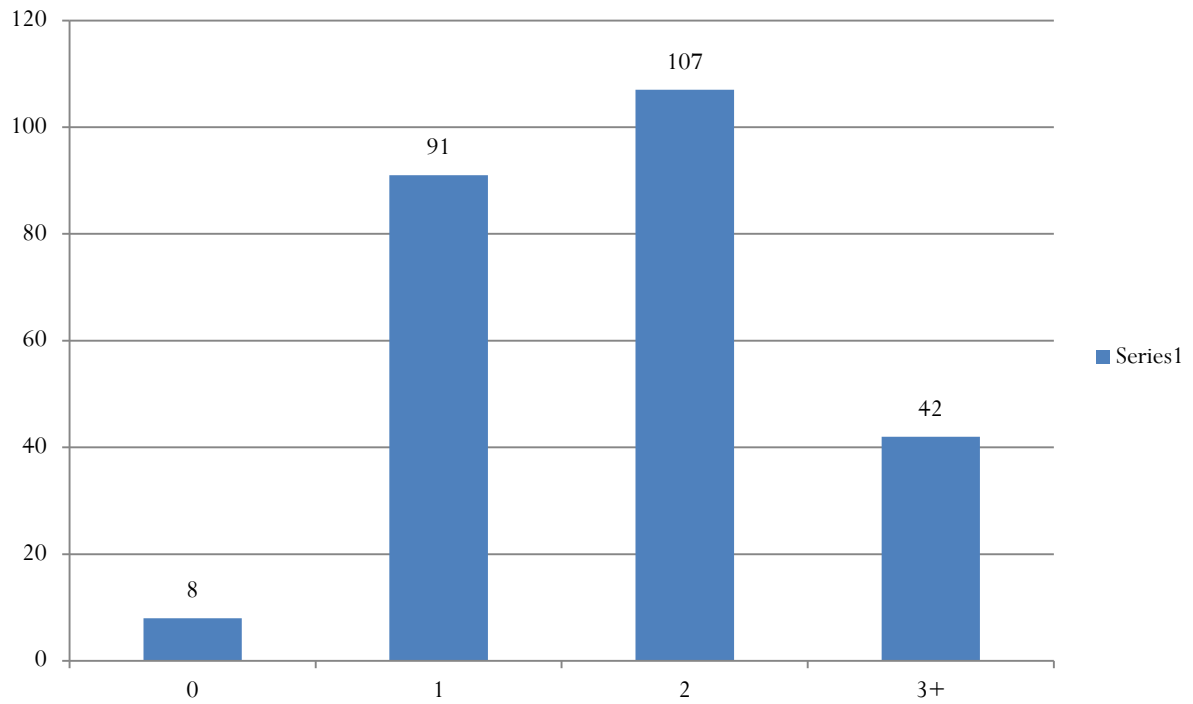
Q3. Is your home rented or owned?



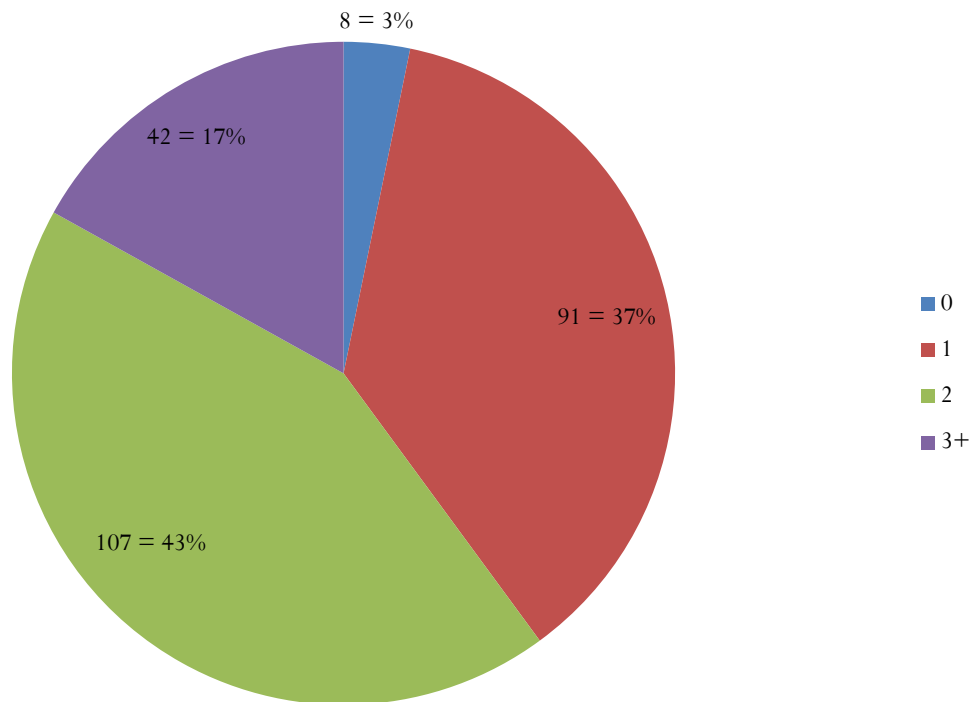
Q4. What type of housing is needed within the development?



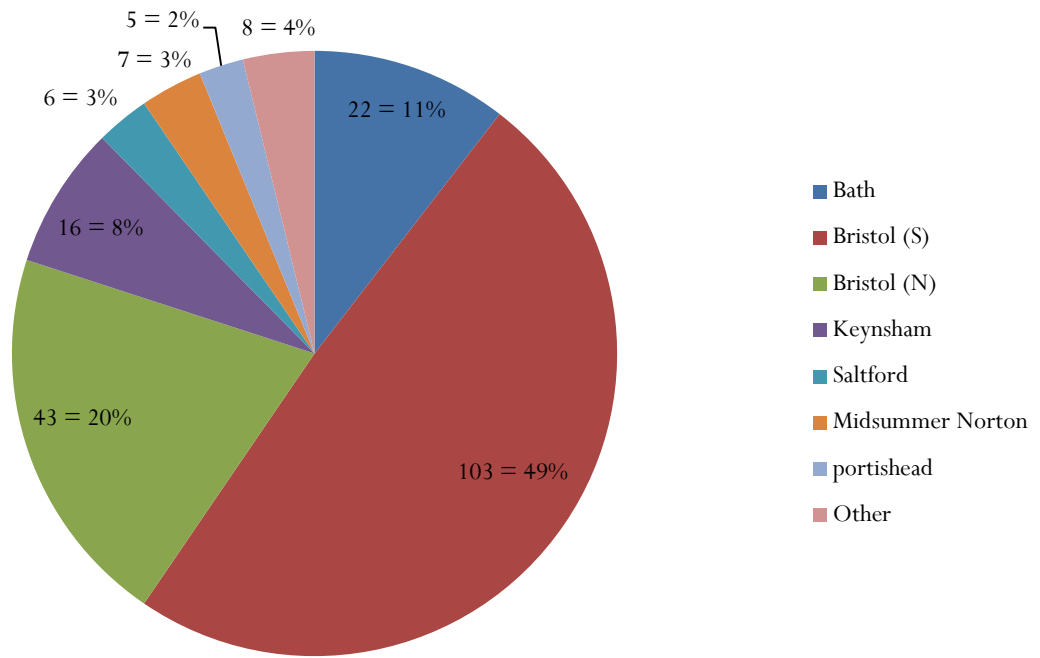
Q5. How many cars are used from your home?



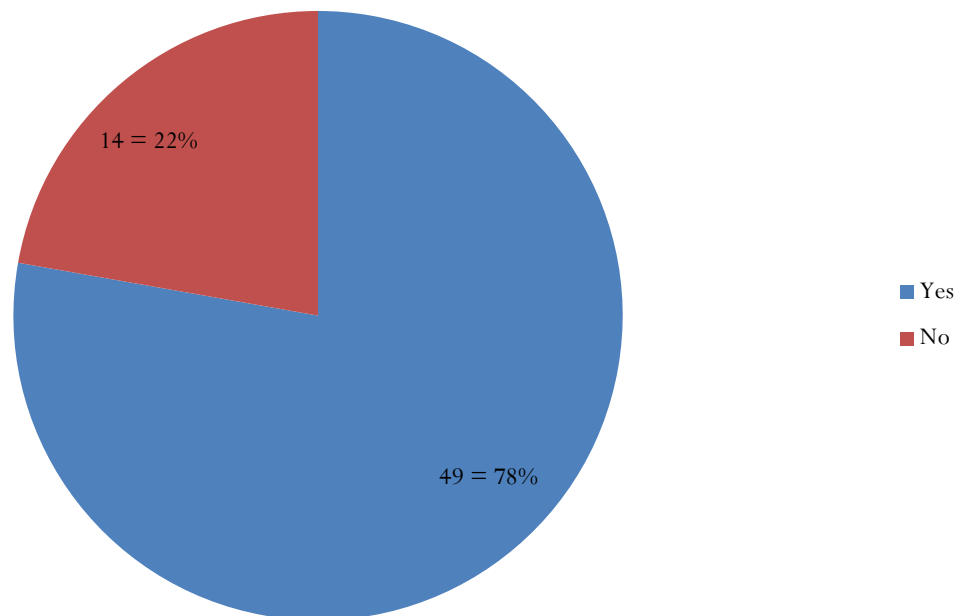
Q5. How many cars are used from your home?



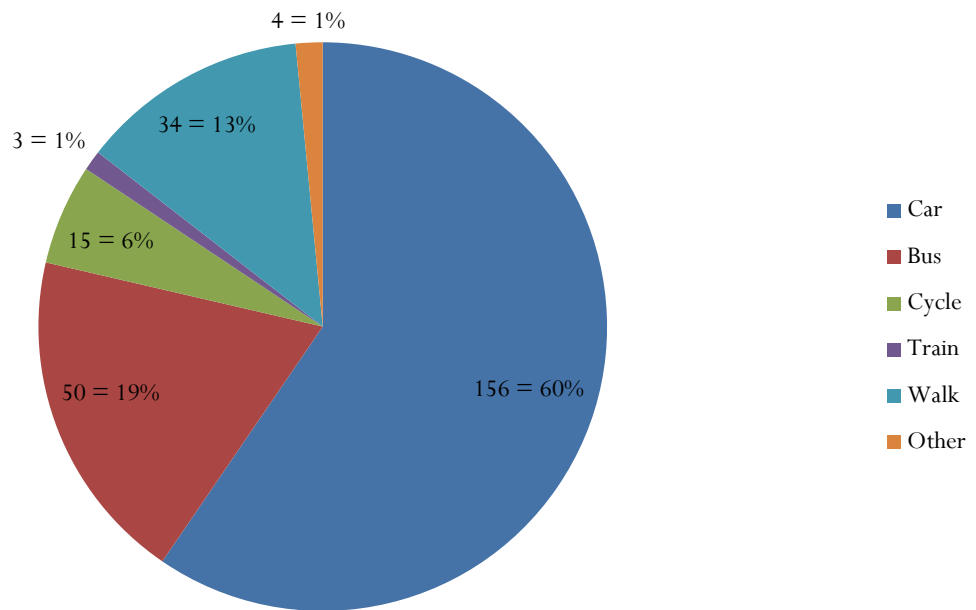
Q6. What areas do you work in?



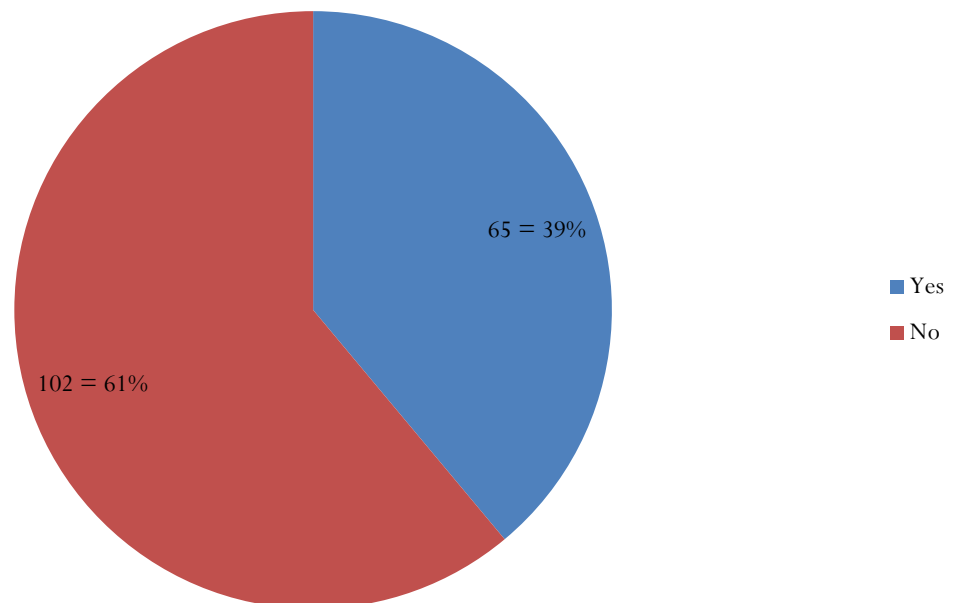
Q6b. Would you like to see more local employment?



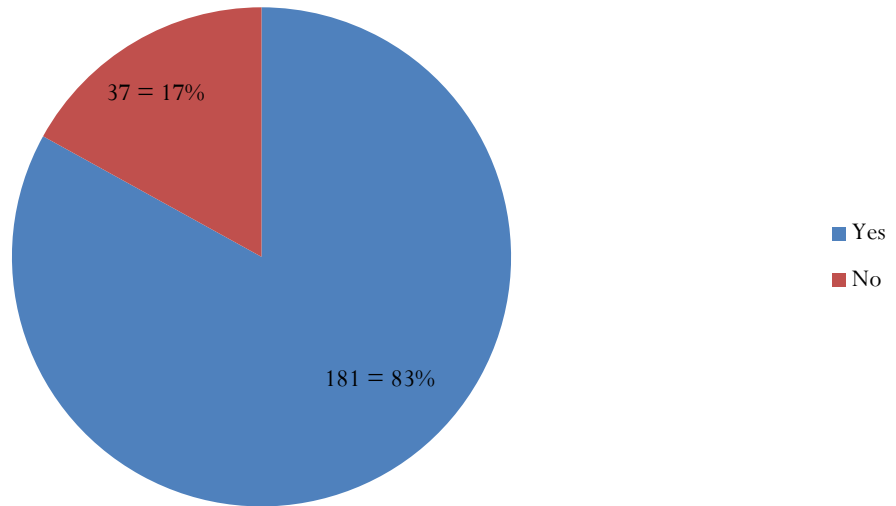
Q7. How do members of the household travel to work/school



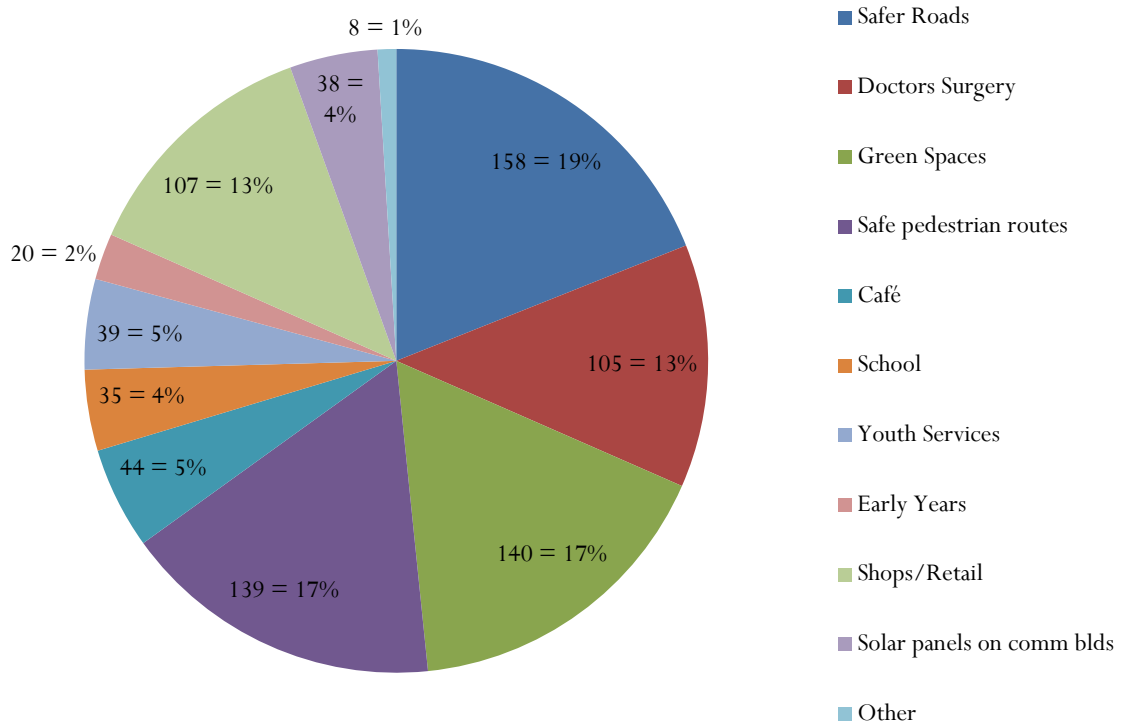
Q8. Are the public transport options to travel to work adequate?



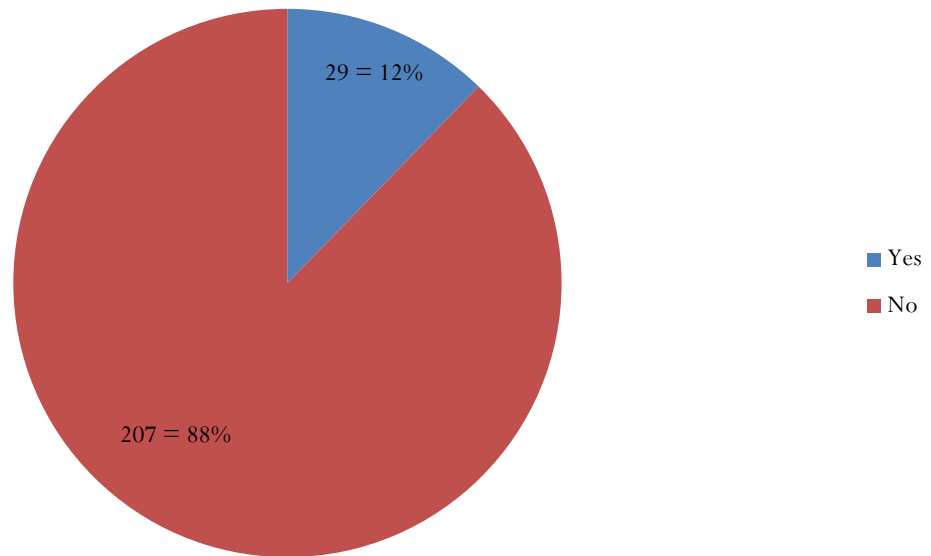
Q9. Would you use public transport if a service was available and reliable?



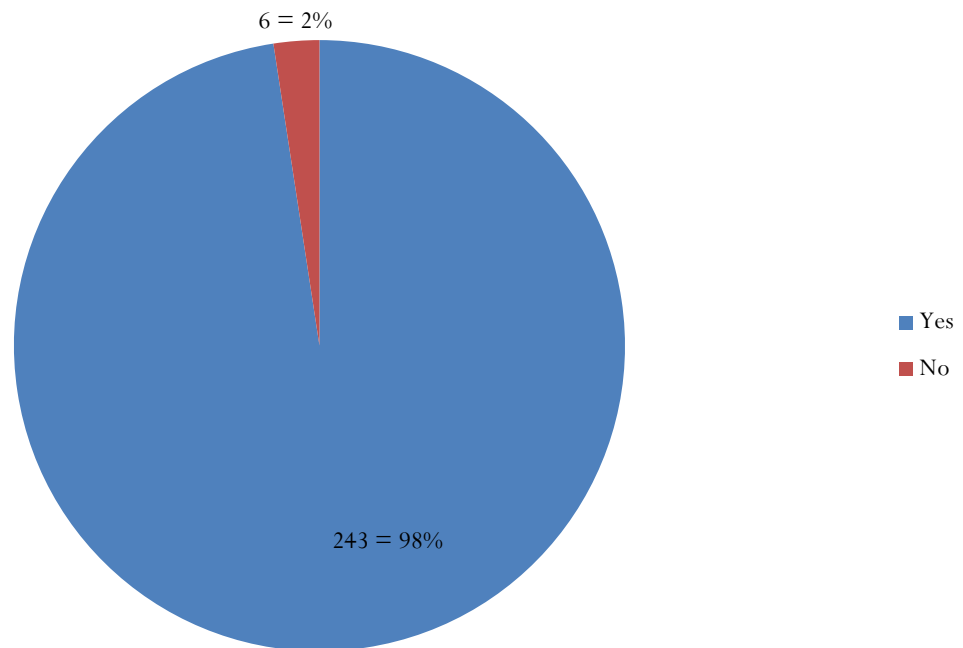
Q10. What services/amenities would you like to see improved for the village?



Q11. Do you see a need for further development in the village?



Q12. Is the Green Belt important to you?



Summary

This survey was undertaken by the Village Neighbourhood Plan team in co-operation with Whitchurch Village Parish Council. 500 surveys were delivered and 251 returned. This was an excellent return rate of over 50%, showing the interest that the population take in the area they live in and its' future. This is perhaps as a result of a high percentage of the population owning their own house and having lived in the area for a significant period of time. This was highlighted by 42% having lived in the Village for over twenty years, with only 16% having lived in the Village for less than five years, and 92% of the total residents owning their own house. The demographic of the Village is a high percentage of older generations, with 85% over the age of twenty years, which contributes to four times as many responses looking to downsize in the area compared to upsizing. Green belt ranks very highly with the Village residents, an extremely high 98% saying it was important to them and 88% seeing no need for further development. Scoring highest from the responses regarding the type of housing that any new development should include were 3-bedroom, bungalows and affordable housing, with 5-bedroom and rented accommodation being the lowest priority.

Transport issues have featured highly in this survey with the majority of residents finding the public transport options to travel to work inadequate. This is further compounded by 83% saying that they would travel to work by public transport if the services were available and reliable. As a result, 60% travel to work by car with 19% taking the bus and 18% living close enough to work to walk and cycle. Transport issues could be eased if there was more local employment, which 78% of the Village residents would like to see. Almost half of the residents work in South Bristol, with the other half working in North Bristol or further afield in areas such as Bath, Portishead and Midsummer Norton. The public transport issues are such that only 3% of households have no car, with 17% having three or more cars. A staggering amount of negative feedback was received with the surveys relating to public transport, in particular the bus service, with complaints featuring highest regarding the lack of frequency, bad timing and insufficient route coverage.

Safer roads and pedestrian routes were also the top scorers in the services and amenities that people would like to see improved in the village, together making up 36% of the responses. Running a close second was green spaces, which in turn featured higher than doctors' surgeries, shop and retail and schools, again underpinning how important it is to the Village.

In conclusion, it can be seen that green spaces are very important to the residents of Whitchurch village. Whitchurch Village is completely surrounded by Green Belt, which has kept the Villages' separate identity, which the results of this survey show it is clearly valued by its residents. Transport issues need to be resolved through better infrastructure and/or improvements to public transport. Encouraging local employment could help ease this issue but will only worsen with increased housing in the area without the infrastructure improvements to support it.

REPORT OF OPEN WHITCHURCH VILLAGE NEIGHBOURHOOD PLAN MEETING

TUESDAY 19TH MAY 2015 AT THE COMMUNITY HALL 7.00pm-8.30pm

With standing room only we were encouraged by the number of attendees numbering 95 including committee and presenters – see list below.

Matt opened the evening with a presentation about the technical and legal aspect of a Neighbourhood Plan in order that residents of the Village would hopefully have a better understanding of the reasons and end goals of such a venture.

The three students from UWE then gave a very good update of their study of the village and we are very grateful to them for all their hard work which will be of immense use as we progress further with our plan.

On display were the pie and bar charts illustrating the results of all the surveys previously circulated round the Village and the spread sheets used to collate the information. Comments made by residents in the surveys were also printed out and on view. At present it is only the Village that has been consulted but it may become a Committee decision to send surveys out to neighbouring areas.

Maps were provided showing the RA5 area of land at Horseworld, that Bath & North East Somerset Council decided to remove from the Green Belt, having decided to place 200 houses at Whitchurch Village. This does not include the RA1 area of land given for 47 houses being developed by Barratt Homes.

Many people remained after the close of the meeting for tea/coffee and biscuits, which were ably provided for by Vi Perry and Helen Keen & Mary Walsh. This afforded opportunities for residents to ask committee members and Cleo Newcombe-Jones (Bath & North East Somerset Council representative) questions of interest.

Paul May, Matt, Stewart, Adam + 3 students, Jill, Mary, Alyson and David

Perry Vi		
Keen Helen		
Gregory Thea	[REDACTED]	
Dolling Chris	[REDACTED]	
A J ?		
Young C		
Young P	[REDACTED]	
James J		
Clark T		
James John		
Shortman Pauline		[REDACTED]
Harrison Linda	[REDACTED]	
Jones Justin		
Sims Bernard	[REDACTED]	[REDACTED]
Ley S	[REDACTED]	[REDACTED]
Barrett P		[REDACTED]
Stout J	[REDACTED]	
Scott J		
Evans Bob		
Evans Jeanette	[REDACTED]	[REDACTED]
Dean RM	[REDACTED]	
Cook PG, 26 The Witheys		
Kirk N	[REDACTED]	
Britten P		
Sullivan AO	[REDACTED]	[REDACTED]
Foster G	[REDACTED]	[REDACTED]
Zawadzki Linda	[REDACTED]	
Zawadzki Toni		
Getter Tamara	[REDACTED]	
Harngen Richard	[REDACTED]	
Britton Shirley		
Britton Walter		
Chandler Rachel	[REDACTED]	
Morgan Natasha	[REDACTED]	[REDACTED]
Trott Paul		
Trott Eve	[REDACTED]	
Kirk Heather	[REDACTED]	
Head Janet	[REDACTED]	
Bishop G		
Bishop Mrs		[REDACTED]
Smith Anna	[REDACTED]	
Hyman Diana		[REDACTED]

Hyman Paul		
Lewis Margaret		[REDACTED]
Rosenthal BE		[REDACTED]
Mathias Neal	[REDACTED]	[REDACTED]
Fletcher Andrew	[REDACTED]	[REDACTED]
LS?		[REDACTED]
Williams MJ		[REDACTED]
Lewis Orchard Park F		
Thatcher J	[REDACTED]	
Thompson Mrs A	[REDACTED]	
Edwards Brian	[REDACTED]	
Ogborne Pat		[REDACTED]
Ogborne Brian	[REDACTED]	
O'Connor T		
Getter Pauline	[REDACTED]	
Gardiner P	[REDACTED]	
Gerrish J		
Gerrish TG		
Norfolk John		
Norfolk Elizabeth	[REDACTED]	
Barrett G?		
Webster Roger David	[REDACTED]	
Walker Walker		
Walker Julie	[REDACTED]	
Campbell Michael John 8 Bristol Road		
Gurton Peter		
Gurton Gloria	[REDACTED]	
Clark Nicola	[REDACTED]	
Wills Len Orchard Park		
Broad AJ Ch WPC		
Head NS		
Head JE		
Rosenthal J		
Fletcher P		[REDACTED]
Harding Mr		
Harding Mrs Orchard Park		
Light D	[REDACTED]	
Chambers A	[REDACTED]	
Cuff V		
Cuff Terry	[REDACTED]	[REDACTED]
Cato Jackie	[REDACTED]	[REDACTED]
Cato David	[REDACTED]	[REDACTED]

PEOPLE WHO ARE INTERESTED IN HELPING

Cato Jackie	[REDACTED]	[REDACTED]
Cato David	[REDACTED]	[REDACTED]
Sims Bernard	[REDACTED]	[REDACTED]
Sims Ang		
Chandler Rachel	[REDACTED]	[REDACTED]
Clark Nicola		[REDACTED]
Smith Anna	[REDACTED]	[REDACTED]
Chambers Alan		[REDACTED]
Cuff Terry	[REDACTED]	[REDACTED]
Gurton Gloria	[REDACTED]	[REDACTED]
Williams MJ		[REDACTED]

The Secretary of the United Reform Church:-

Julie Walker mentioned at meeting that the Church would be readily available for bookings and then we would not have to compete with the noise of the dancing class next door which I must admit at times severely distracted from the evening.

Her Tel No [REDACTED]

Whitchurch Village Regulation 14 consultation – SOCIAL MEDIA & NOTICE

The image is a screenshot of a Facebook page for 'Whitchurch Village Neighbourhood Plan'. The page is set to 'Public Posts'. The main content area shows two posts. The top post is a video from January 14, 2017, at 14:53, showing a woman in a white scarf speaking. The bottom post is a text announcement from January 15, 2017, at 15:52, stating: 'Just to remind you ... a leaflet will be through your letterbox soon. Next meeting TUESDAY 24TH JANUARY 2017 AT 7.30PM BRITISH LEGION STAUNTON LANE BAR OPEN 🍷'. The left sidebar contains navigation options: 'POSTED BY' (Anyone, You, Your Friends, Your Friends and Groups), 'TAGGED LOCATION' (Anywhere, Bristol, United Kingdom), and 'DATE POSTED' (Any time, 2017, 2016, 2015). The right sidebar features a 'TRENDING' list with items like 'Kala Ford', 'Sherrin Hewson', 'Game of Thrones', 'The Gentles', 'Mike Dean', 'Aid Aslam', 'Theresa May', 'Chelsea Manning', 'Michael Biebi', and 'Tim Farron'. Below this is a 'PEOPLE YOU MAY KNOW' section for Christopher Griggs-Trevarthen and a 'SPONSORED' advertisement for 'Corrie star Simon Gregson reveals wife E... murreypage.co.uk'.

POSTED BY

- Anyone
- You
- Your Friends
- Your Friends and Groups
- ... Choose a source ...

TAGGED LOCATION

- Anywhere
- Bristol, United Kingdom
- ... Choose a location ...

DATE POSTED

- Any time
- 2017
- 2016
- 2015
- ... Choose a date ...

If you are interested take a look at the link... See more



Latest News | Whitchurch Village Neighbourhood Plan

The Local Planning Authority have released land at Horseworld from the Greenbelt in order to allow a total of around 200 new homes to be built

WWW.WHITCHURCHPLAN.CO.UK

1 Comment 1 Share

Like Comment Share

Whitchurch Village Neighbourhood Plan

Like Page

8 October 2016 · Whitchurch · 🌐

Hi all, our aspirational neighbourhood plan for Whitchurch Village is almost complete. The next stage is send it to the inspector for approval. We will need feedback from the community in the not too distant future. We will be arranging a public meeting in the next few months to update you and get your support.

Please share this post with people in the Village. This will affect you and your community

2 1 Share

Like Comment Share

Whitchurch Village Neighbourhood Plan

Like Page

10 February 2015 · 🌐

Please support us by sharing this page with your friends and family. Whitchurch Village Neighbourhood Plan needs that support of the community to make our Village better.

Leahouppery Stragg-Tovarthen
12 mutual friends
Add Friend

SPONSORED Create Advert



Corrie star Simon Gregson reveals wife E...
mummyspages.co.uk
He was responding in a Twitter post >



Newest Dresses Sale
Twinkldeals.com
Beautiful Dresses At Unbelievable Prices. Shop Today for The Latest Fashion! #FreeShipping

Privacy Terms Advertising adChoices
Cookies More
Facebook © 2017

Public Meeting - Tuesday 24th January at 7.30pm at The British Legion, Staunton Lane, BS14 0QF

A group of a mix of residents and Village Councillors have been working on the Neighbourhood Plan since 2014. The aim of the plan is for the villagers to have a say in the way in which **Whitchurch Village** is developed. We also hope to be able to retain the character and identity of the village whilst maintaining a green area, separating the village from the urban sprawl of Bristol.

The five main objectives that we are concentrating on are:

1. Maintain the village identity and increase sustainability
2. Manage and maintain the green buffer
3. Ensure any new developments are integrated within the village
4. The A37 impact
5. Seek improvements for the community arising from future growth

The Neighbourhood Plan is in its final stages of preparation and a presentation will be given to all of you and the public on **Tuesday 24th January at 7.30pm at The British Legion, Staunton Lane, BS14 0QF**

We wish to prove to the authorities that Whitchurch Village residents are passionate about what happens to their village. Over the last two years you have been brilliant in filling in questionnaires and your answers have been important to the Neighbourhood Plan.

**Feel free to discuss this with your
neighbours, come to the meeting to listen to
what we have to say and then put any relevant
questions to the group.**

Thanks,

The WVNP Steering Group

The Neighbourhood Plan Steering Group held a Public Meeting on January 24th at 7.30pm at The British Legion, Staunton Lane, Whitchurch Village.

Committee Members present

Joint Chairs, Cllr Paul May, PClr Alyson Lampard, Mary Walsh, Jill Britten, Barrie Hartshorne, David Chivers, Rachel Chandler, Stewart Dorgan, Roxanne Agius, Natasha,

Absent were

Tony Griffin, Justin Jones, Matt Donovan

Present was Becci of The Week In magazine from Keynsham.

In attendance were 94 people registered on the Attendance Sheets, making 104. However at least 115 people were counted and because the entrance was so busy some people obviously were unable to sign in.

As people arrived they were given 3 papers, a simple explanation of the Neighbourhood Plan and the WoE JSP & JTP, an explanation of the 5 Objectives of the Neighbourhood Plan, and a Comment Sheet to give their thoughts on the evening.

Ashton Broad opened the Meeting with a short explanation of the involvement of the Parish Council and then handed the meeting over to Cllr Paul May.

Cllr Paul May gave a factual but brief account of the Neighbourhood Plan and its objectives and status within the BANES Core Strategy and Planning. Alyson Lampard spoke of her involvement with producing the Plan and highlighted why she likes the village – very friendly people etc but why she also doesn't like it – no shop, difficult to walk anywhere, and hopes the NP may alleviate problems making the Village an even better place to live. Jill Britten spoke of her long involvement with trying to secure the safeness of the Green Belt – something she and Mary Walsh have been heavily involved with over the last eight years and also explained to those who asked, that without the Green Belt, Whitchurch Village will cease to exist as a Village.

On show were 7 copies of the Neighbourhood Plan for people to see, plus one showing on overhead screen, all the relevant files, History of the Village, History of Maes Knoll and Wansdyke, Village Surveys x 3, Village Character Appraisal, Maps of the Parish Boundary, Green Belt Boundary, Aspirational plans – new woodland park, Community Asset – Barbarians RFUC, Retail Shop, Transport Report, Historic England, Listed Buildings, Air Quality Report.

One person made a very good observation regarding the land underneath the Saltwell Viaduct. He felt it would be a good idea to landscape it and make it a recreational area which would achieve two things – place for people to go and enjoy, make it more difficult to remove from the green belt thereby making it more difficult for GB status to be removed. 10 comment sheets were handed in and all were very positive – better walking, cycling facilities, shop, air pollution a problem, a pelican crossing by the Maes Knoll Pub across the A37. Most thought the evening very informative, interesting, and great praise for all the committee.

Another key objective is to deal with the impacts of the A37 including traffic and safety. Traffic on the main road which bisects the village has increased by a third since 2000.

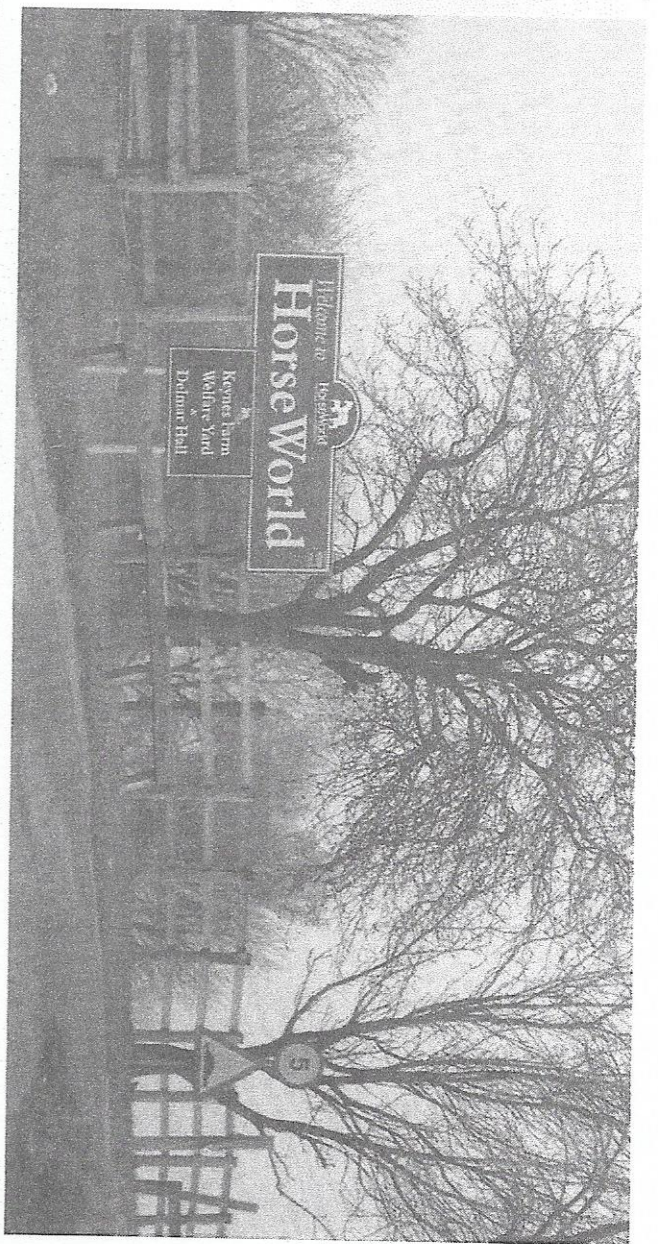
Cllr May said he had seen people take three-quarters of an hour to pull out on to the A47 from Woolland Lane at peak times. Meanwhile air quality monitoring at the crossroads by the Maes Knoll pub has revealed pollution is above safe levels. The plan says there is a need for improved pedestrian and cycle routes through the village.

The deadline for comments on the Draft Plan is 7th March before it goes on its next round of consultation, which will be conducted by Bath and North East Somerset Council. A planning inspector will examine the document and there will have to be a local referendum before the plan is finally adopted.

Cllr May said the team had worked closely with B&NES Council officers to make sure the policies being proposed would withstand scrutiny in court if future developers challenged the Neighbourhood Plan.

The Draft Plan can be downloaded at www.wvmp.org.uk and a hard copy can be viewed at the parish council office at the community centre on Bristol Road. If you would like a hard copy call 01275 839873.

Meanwhile this Saturday Cllr May, along with leading campaigners Jill Britten and Mary Walsh, are due to meet North East Somerset MP Jacob Rees-Mogg to discuss the 3,500 homes and the proposals for a Park & Ride.



Sleep Lane

Residents draw battlelines as they fight for their village's survival

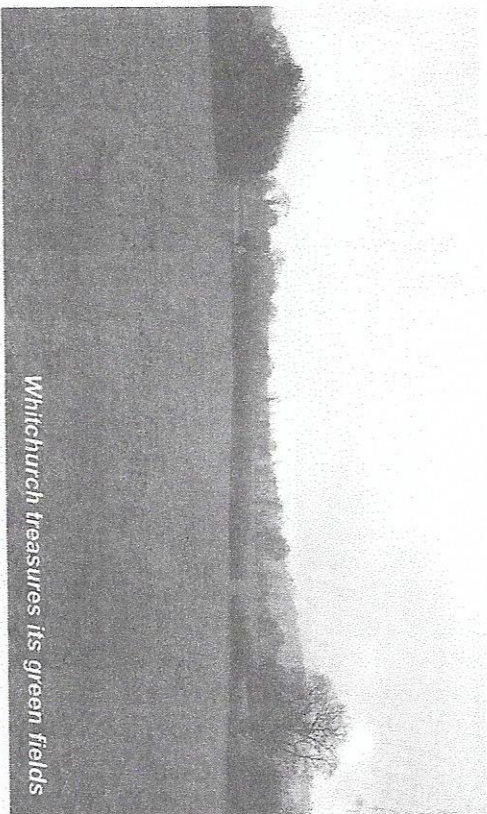
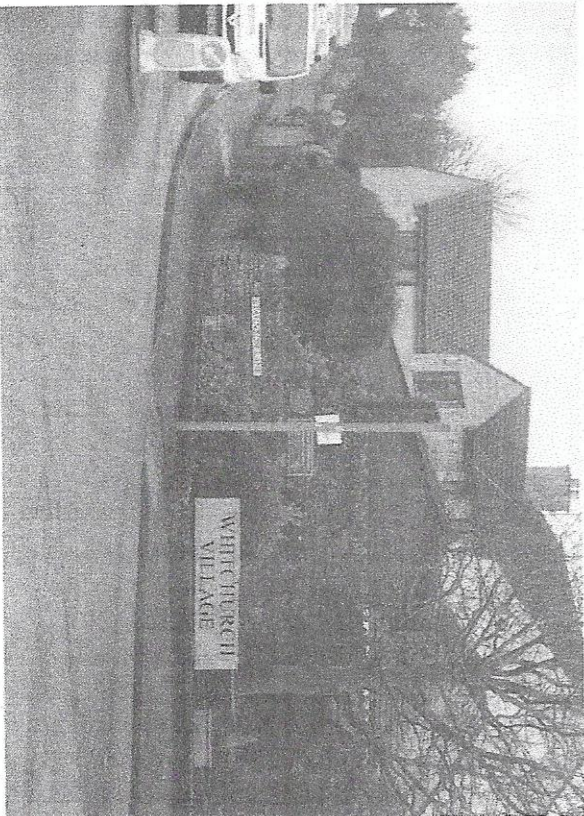
Well over 100 Whitchurch residents attended the launch of their village's Neighbourhood Plan which they hope will help them fend off plans to thrust 3,500 homes on their Green Belt land. Neighbourhood Plans, introduced by the 2011 Localism Act, give communities more control over the type, location, size, pace and design of development in their areas, and the unveiling of Whitchurch's Draft Plan last week is the culmination of more than two years' hard work.

When approved, the plan, which looks at the future of the village up to the year

2042, will have legal status.

Whitchurch Village has just over 500 homes and is already taking a 200-home development on land between Sleep Lane and Staunton Lane, on top of the 47 that Barrett Homes have built at Sleep Lane. But under the West of England authorities' Joint Spatial Plan (JSP) revealed last year, 250 acres south east of Whitchurch is earmarked for development on land which would be taken out of the Green Belt to help meet the region's housing shortfall. A Park & Ride is also proposed.

At the public meeting held last Tuesday



Whitchurch treasures its green fields

at the Royal British Legion Club, Cllr Paul May, who represents Whitchurch & Pensford on B&NES Council and is joint chair of the Plan with Alyson Lampard, revealed that around 250 letters had been sent by locals to object to the massive housing development, fearing it would destroy the village and turn it into a suburb of Bristol.

In total, there were some 1,300 responses from across B&NES, Bristol, South Gloucestershire and North Somerset to the regional consultation. Land is being identified to cover the shortfall of 39,000 houses from a total of 105,000 new homes forecast over the next 20 years. All the feedback is currently being evaluated and

considered.

Cllr May told villagers that the Neighbourhood Plan before them was version 23 as so much had happened to change the document since work began on it. The objectives of the Neighbourhood Plan are to maintain the village's identity and increase sustainability; manage and maintain the green buffer between village and city; ensure new development is integrated within the village, as well as seeking improvements for the community arising from future growth, such as a village shop, local employment growth, a park and a new school in a safe location.

WHITCHURCH VILLAGE NEIGHBOURHOOD PLAN**FEBRUARY 2017**

Thank you to all of you who came to the Neighbourhood Plan Consultation Meeting on Tuesday January 24th at the British Legion. It was amazing to see so many people there, approximately 120, to have a look at your Neighbourhood Plan.

We now ask you to please fill in the enclosed Consultation Response Form and for your convenience we have enclosed a stamped addressed envelope for your reply. This Form is an official part of the process and so it is important that as many of you as possible manage to return it and can we thank you in advance for doing so. Also, as an additional aid, we have enclosed a brief description of the 5 Objectives of the Plan that relate to the 5 questions in the Response Form.

Your support for your Village over very many years has been overwhelming and has made all the hard work worthwhile. The Neighbourhood Plan is a legal part of the Planning Process within Bath and North East Somerset Council and it shows a pathway for the Village for the next decade or so.

Joint Chairs

Ward Councillor Paul May

Clr. Alyson Lampard

www.wvnp.org.uk

WHITCHURCH VILLAGE NEIGHBOURHOOD PLAN
Consultation Response Form

Please refer to the plan and polices at: www.whitchurchparishcouncil.co.uk and www.wvnp.org.uk.
Details of how to respond are detailed below. Use additional pages as necessary.

Responses to be filled in on the websites below or **USE THE STAMPED ADDRESSED ENVELOPE**

Sue Dyer, Parish Clerk, The Community Centre, Bristol Road, Whitchurch Village, Bristol
BS14 0PT or e mail info@whitchurchparishcouncil.co.uk
OR e mail: group@wvnp.org.uk n or Alyson Lampard, Sleep Lane Smiles Dental Practice,
Sleep Lane, Whitchurch alysonlampard@hotmail.co.uk

www.whitchurchparishcouncil.co.uk
www.wvnp.org.uk

DEADLINE FOR RESPONSES: 7th March 2017

Objective 1: Maintain the village identity and increase sustainability

Do you agree with the policies in this section – YES NO

Comments

Objective 2: Manage and maintain the Green Buffer

Do you agree with the policies in this section – YES NO

Comments

Objective 3: Ensure that new development is integrated within the village

Do you agree with the policies in this section – YES NO

Comments

Objective 4: The A37 Impact

Do you agree with the policies in this section – YES NO

Comments

Objective 5. Seek improvements for the community arising from future growth

Do you agree with the policies in this section – YES NO

Comments

Name.....

Address.....

.....

PLEASE USE THE STAMPED ADDRESSED ENVELOPE SUPPLIED WITH THIS FORM FOR YOUR REPLY TO DAVID CHIVERS.

Please note that all names and addresses will be made public.

**THIS IS A SIMPLE EXPLANATION OF THE FIVE MAIN OBJECTIVES OF THE WHITCHURCH
VILLAGE NEIGHBOURHOOD PLAN**

1 Maintain the Village identity and increase sustainability.

The objective here is to have any development design to fit in with the village, and to be sympathetic to heritage settings, has energy efficient design plus climatic thought into the design, efficient uses of water.

Provide a mix of housing types – on schemes of 10 or more houses, the mix of types and sizes should meet needs of current and future households. Uniform type and size will not be acceptable.

Allocation of affordable housing. – at least 30% of affordable housing within the Village (or such different number as is evidenced by demonstrable need at the time of development) shall be allocated as seen –

- a. Is a resident in the Parish and needs separate accommodation
- b. Is not resident in the Parish, but; or
- c. Has family associations in the Parish; or
- d. Has had periods of residence in the Parish; or
- e. Through their work provides important services to the Parish and who need to live closer to the community or has employment or the offer of employment within the parish.

Heritage Assets & their Setting. – These must be taken into consideration and any development must not cause harm or harm the setting of important heritage sites in the Parish.

Retain employment in the Village – existing employment sites will be encouraged to remain for business use.

Broadband Provision Policy – a minimal symmetrical speed of 25Mbps with realistic future proof upgrades available ('Connectivity Statement' with any Planning Appl)

2 Manage and maintain the Green Buffer.

The objective here is to keep the Village separate from the Bristol fringes and whilst the Green Belt should do this it was thought appropriate to include Green Buffer Development proposals on the edge of the village must maintain visual connections with the countryside and similarly the visual impact on views into and from the countryside must be minimised. Further wildlife corridors must not be harmed.

3 Ensure that new development is integrated within the village

New development must ensure that it is well connected both within any site and with the wider village – good road system, adequate pavements, etc.

4 The A37 – Impacts

Air Quality – an air quality management assessment will be required for new development. **Traffic Impacts** of Developments must have an assessment of implications regarding, road dangers, pedestrian environment & movement, cycling routes, Public transport and street network. **Traffic & Safety** for good flow of traffic. **Pedestrian & cycle routes** – must follow needed routes and link new development to community facilities and services with safety for users.

5 To seek improvements for the community arising from future growth.

These are ASPIRATIONAL objectives such as new play area, shop, community facilities

Objectives of the Whitchurch Neighbourhood Plan:

1. Maintain the village identity and increase sustainability

Policy WV 1.1 - Village Design

All proposals for new development shall comply with Whitchurch Village Character Assessment Document (2015). Furthermore, each new development application shall demonstrate the following:

- a) is designed to a high quality which responds to the heritage and distinctive character and reflects the identity of the local context of Whitchurch Village as defined in the Character assessment in terms of; height, scale, spacing, layout, orientation, design and materials of buildings, the scale, design and materials of the public realm (highways, footways, open space and landscape)
- b) is sympathetic to the setting of any heritage assets
- c) incorporates energy efficient design and climatic resilience into the design; and,
- d) efficiently uses water (such as through the use of flow regulators, water efficient fittings and appliances) and encourages water reuse

Policy WV 1.2- Provide a mix of housing types

On schemes of more than 10 dwellings, will require a mix of types and sizes to meet the needs of current and future households. Large areas of uniform type and size will not be acceptable.

Policy WV 1.3- Allocation of Affordable Housing

At least 30% of affordable housing within Whitchurch village (or such different number as is evidenced by demonstrable need at the time of development) shall be allocated based on a local connection, meaning that people with a strong local connection to the Parish and whose needs are not met by the open market will be the first to be offered the tenancy or shared ownership of the dwelling. A strong local connection means an applicant(s) who:

- a) Is resident in the Parish and needs separate accommodation
- b) Is not resident in the Parish, but:
- c) Has family associations in the Parish; or
- d) Has had periods of residence in the Parish; or
- e) Through their work provides important services to the Parish and who need to live closer to the community or has employment or the offer of employment within the Parish.

Policy WV 1.4- Heritage Assets & Their Setting

Any development must conserve and enhance the heritage assets of the Parish and their setting, including maintaining settlement separation. Besides the nationally Listed Buildings, the following buildings and sites are of architectural significance, local distinctiveness and character and historic importance:

Inappropriate extensions or revisions to Listed Properties and other properties that, while not Listed, make a contribution to the character of the area will be resisted. Any development must not cause harm or adversely impact on the setting of important heritage sites in the Parish.

Policy WV 1.5- Retain employment in the village

Proposals for the redevelopment or change of use of the ground floor of redundant land or buildings in employment or service trade use to non-employment uses will only be permitted if the existing use is no longer economically viable and the site has been marketed for freehold or leasehold at a reasonable price for at least a year without restriction.

Policy WV.1.6-Broadband Provision Policy

To be supported development proposals for new dwellings, employment premises, and education facilities must make provision to connect to the internet with a minimum symmetrical speed of 25Mbps and with realistic future proof upgrades available (demonstrated through a 'Connectivity Statement' provided with relevant planning application).

2. Manage and maintain the Green Buffer

Policy WV 2.1- Positive green buffer management between Whitchurch Village and Bristol

Development will not be permitted outside the housing development boundary, as defined on Fig.13 if individually or cumulatively it would result in increasing the coalescence between Whitchurch Village and Bristol or reducing their separate identity by:

- a) Reducing the gap between Whitchurch Village and Bristol or,
- b) Increasing the density of development within existing curtilages

Policy WV 2.2- Development proposals, particularly where sited on the edge of Whitchurch Village must maintain visual connections with the countryside

Where possible, open views towards the countryside, and across open spaces must be maintained from key existing routes within the village. Views along streets and/or open spaces to the surrounding countryside must be created within new developments where there are opportunities to do so.

Policy WV2.3- The Visual impact of new development on views into and from the countryside must be minimised.

An assessment of views to and from the proposed development must be included in a supporting Visual Impact Statement. Visual impact should be minimised through the design of the site layout, buildings and landscape. The approach to minimising visual impact must be fully explained in the visual impact statement.

Policy WV 2.4-Wildlife Corridors and Ecological Network

Development must avoid harming existing ecological assets i.e. the habitats and dependent local biodiversity, including any features of importance for foraging and for maintaining habitat connectivity (including local and strategic Ecological Networks). Any development must submit evidence which shows how development will not harm these attributes. This shall be in the form of a Landscape and Ecological Mitigation and Management Plan.

3. Ensure that new development is integrated within the village

Policy WV 3.1- Proposals for new housing in Whitchurch Village must ensure that the new homes are well integrated with the existing village.

Proposals for new housing must ensure that the new homes are well connected both within any site and with the wider village.

4. The A37 – Impacts

Policy WV 4.1- Air Quality

Development proposals must demonstrate that developers have considered the impact of their proposals on air quality and where appropriate, provide an air quality management assessment.

Developers which would result in detriment of Whitchurch Village's nitrogen dioxide pollution levels will be resisted.

Policy WV4.2 -Traffic Impacts of Developments

Development proposals that are likely to have effects on transport must be accompanied by an assessment of the transport implications during both construction and in operation, in particular addressing impacts on:

- a) Road dangers
- b) Pedestrian environment and movement
- c) Cycling infrastructure provision
- d) Public transport
- e) The street network

Policy WV4.3- Traffic and Safety

Proposals that accord with the policies in the Plan and result in improvements to the free flow of traffic in the Village will be supported. Proposals requiring planning permission and which seek to increase the number of access points, or which would involve an increase in traffic generation, will need to demonstrate that they do not further inhibit the free flow of traffic or exacerbate conditions of parking stress, including conflict with larger vehicles or encourage through traffic.

Policy WV 4.4- Pedestrian and cycle routes must be provided to link together housing and Whitchurch Village community facilities and services

Pedestrian and cycle routes must follow desire lines and clearly link new development to community facilities and services. Routes must keep road crossings and changes in level to a minimum. Road crossings must form a natural part of the route, avoiding detours that make the crossing dangerous.

5. OBJECTIVE 5 To seek improvements for the community arising from future growth.

Please refer to the Neighbourhood Plan to see the ASPIRATIONAL Objectives.

APPENDIX 8

Whitchurch Village Draft Neighbourhood Development Plan (Reg 14) Consultation- 24th January-7th March 2017- All responses received.

Consultee ref no.	Question No.	Name of the consultee	Summary of comments - main point raised	WVNDP - Response and changes proposed
1	1	T J Stokes	No added comments	Thank you for your response
1	2	T J Stokes	No added comments	Thank you for your response
1	3	T J Stokes	No added comments	Thank you for your response
1	4	T J Stokes	No added comments	Thank you for your response
1	5	T J Stokes	No added comments	Thank you for your response
2	1	N Head	No added comments	Thank you for your response
2	2	N Head	Green Buffer essential	Comment noted - see wvdnp Objective 2
2	3	N Head	No added comments	Thank you for your response
2	4	N Head	More pavements	Comment noted - see wvdnp Objective 3
2	5	N Head	shop.playarea.buses	Comment noted - see wvdnp Objective 5
3	1	N Kirk	No added comments	Thank you for your response
3	2	N Kirk	Agree	Thank you for your concurring comments
3	3	N Kirk	Done correctly	Thank you for your concurring comments
3	4	N Kirk	A37 bad	Thank you for your concurring comments
3	5	N Kirk	imp infrastructure	Thank you for your concurring comments
4	1	M Erwood	No added comments	Thank you for your response
4	2	M Erwood	No added comments	Thank you for your response
4	3	M Erwood	No added comments	Thank you for your response
4	4	M Erwood	No added comments	Thank you for your response
4	5	M Erwood	No added comments	Thank you for your response
5	1	G & S Smith	No added comments	Thank you for your response
5	2	G & S Smith	No added comments	Thank you for your response
5	3	G & S Smith	Unsure	Comment noted - see wvdnp Objective 3
5	4	G & S Smith	No added comments	Thank you for your response
5	5	G & S Smith	No added comments	Thank you for your response
6	1	A Bishop	No added comments	Thank you for your response
6	2	A Bishop	No added comments	Thank you for your response

Consultee ref no.	Question No.	Name of the consultee	Summary of comments - main point raised	WVNDP - Response and changes proposed
6	3	A Bishop	No added comments	Thank you for your response
6	4	A Bishop	No added comments	Thank you for your response
6	5	A Bishop	No added comments	Thank you for your response
7	1	A Willis	No added comments	Thank you for your response
7	2	A Willis	No added comments	Thank you for your response
7	3	A Willis	No added comments	Thank you for your response
7	4	A Willis	No added comments	Thank you for your response
7	5	A Willis	No added comments	Thank you for your response
8	1	M G Mills	No added comments	Thank you for your response
8	2	M G Mills	No added comments	Thank you for your response
8	3	M G Mills	No added comments	Thank you for your response
8	4	M G Mills	No added comments	Thank you for your response
8	5	M G Mills	No added comments	Thank you for your response
9	1	P Leavey	No added comments	Thank you for your response
9	2	P Leavey	No added comments	Thank you for your response
9	3	P Leavey	No added comments	Thank you for your response
9	4	P Leavey	No added comments	Thank you for your response
9	5	P Leavey	No added comments	Thank you for your response
10	1	N C Prescott	Mix of houses	Comment noted - see wvndp Objectives 3 & 5
10	2	N C Prescott	Keep Village identity	Comment noted - see wvndp Objective 1
10	3	N C Prescott	No added comments	Thank you for your response
10	4	N C Prescott	more cars impact on A37	Comment noted - see wvndp Objective 4
10	5	N C Prescott	No added comments	Thank you for your response
11	1	MJ Williams x 2	No added comments	Thank you for your response
11	2	MJ Williams x 2	wildlife & habitats imp to Vill.	Comment noted - see wvndp Objective 2
11	3	MJ Williams x 2	No added comments	Thank you for your response
11	4	MJ Williams x 2	No added comments	Thank you for your response
11	5	MJ Williams x 2	No added comments	Thank you for your response
12	1	K Lacy	No added comments	Thank you for your response
12	2	K Lacy	No added comments	Thank you for your response
12	3	K Lacy	No added comments	Thank you for your response

Consultee ref no.	Question No.	Name of the consultee	Summary of comments - main point raised	WVNDP - Response and changes proposed
12	4	K Lacy	No added comments	Thank you for your response
12	5	K Lacy	No added comments	Thank you for your response
13	1	B & R Webb	No added comments	Thank you for your response
13	2	B & R Webb	No added comments	Thank you for your response
13	3	B & R Webb	No added comments	Thank you for your response
13	4	B & R Webb	No added comments	Thank you for your response
13	5	B & R Webb	No added comments	Thank you for your response
14	1	K Williams	No added comments	Thank you for your response
14	2	K Williams	No added comments	Thank you for your response
14	3	K Williams	No added comments	Thank you for your response
14	4	K Williams	No added comments	Thank you for your response
14	5	K Williams	congrats on this stance	Thank you for your response
15	1	E Cox	Mix of houses	Comment noted - see wvndp Objectives 3 & 5
15	2	E Cox	remain separate	Comment noted - see wvndp Objective 1
15	3	E Cox	No added comments	Thank you for your response
15	4	E Cox	dangerous to walk in village	Comment noted - see wvndp Objective 3
15	5	E Cox	larger school.dr.surgery.P.O.	Comment noted - see wvndp Objective 5
16	1	G & B Jones	agree	Thank you for your concurring comments
16	2	G & B Jones	maintain individuality	Comment noted -see wvndp Objective 1
16	3	G & B Jones	No added comments	Thank you for your response
16	4	G & B Jones	traffic at capacity	Comment noted - addressed at wvndp Objective 4
16	5	G & B Jones	opp for more community use	Comment noted - addressed at wvndp Objective 5
17	1	N Wiggins	No added comments	Thank you for your response
17	2	N Wiggins	No added comments	Thank you for your response
17	3	N Wiggins	No added comments	Thank you for your response
17	4	N Wiggins	No added comments	Thank you for your response
17	5	N Wiggins	No added comments	Thank you for your response
18	1	P Bishop	No added comments	Thank you for your response
18	2	P Bishop	No added comments	Thank you for your response

Consultee ref no.	Question No.	Name of the consultee	Summary of comments - main point raised	WVNDP - Response and changes proposed
18	3	P Bishop	No added comments	Thank you for your response
18	4	P Bishop	No added comments	Thank you for your response
18	5	P Bishop	No added comments	Thank you for your response
19	1	K Stout	Housing needed for young	Comment noted and addressed at wvndp Objective 1
19	2	K Stout	we all live on ex gr fld sites	Comment noted - N/A to wvndp
19	3	K Stout	will eventually join bristol & K	Comment noted - N/A to wvndp
19	4	K Stout	Personal comments N/A	N/A
19	5	K Stout	No added comments	Thank you for your response
20	1	H Gammon	mix of houses for mix of uses	Comment noted - see wvndp Objective 1
20	2	H Gammon	No added comments	Thank you for your response
20	3	H Gammon	No added comments	Thank you for your response
20	4	H Gammon	No added comments	Thank you for your response
20	5	H Gammon	No added comments	Thank you for your response
21	1	G O'Regan	No added comments	Thank you for your response
21	2	G O'Regan	No added comments	Thank you for your response
21	3	G O'Regan	No added comments	Thank you for your response
21	4	G O'Regan	No added comments	Thank you for your response
21	5	G O'Regan	No added comments	Thank you for your response
22	1	R D Hawkins	No added comments	Thank you for your response
22	2	R D Hawkins	No added comments	Thank you for your response
22	3	R D Hawkins	No added comments	Thank you for your response
22	4	R D Hawkins	No added comments	Thank you for your response
22	5	R D Hawkins	No added comments	Thank you for your response
23	1	R Lampard	No added comments	Thank you for your response
23	2	R Lampard	No added comments	Thank you for your response
23	3	R Lampard	No added comments	Thank you for your response
23	4	R Lampard	No added comments	Thank you for your response
23	5	R Lampard	No added comments	Thank you for your response
24	1	Rhiannon Lampard	No added comments	Thank you for your response
24	2	Rhiannon Lampard	No added comments	Thank you for your response

Consultee ref no.	Question No.	Name of the consultee	Summary of comments - main point raised	WVNDP - Response and changes proposed
24	3	Rhiannon Lampard	No added comments	Thank you for your response
24	4	Rhiannon Lampard	No added comments	Thank you for your response
24	5	Rhiannon Lampard	No added comments	Thank you for your response
25	1	R Pascoe	No added comments	Thank you for your response
25	2	R Pascoe	No added comments	Thank you for your response
25	3	R Pascoe	No added comments	Thank you for your response
25	4	R Pascoe	Most imp issue for me - A37	Comment noted - addressed at wvndp Objective 4
25	5	R Pascoe	dr surg. Primary & Sec.School	Comment noted - see wvndp Objective 5
26	1	P & A Edwards	No added comments	Thank you for your response
26	2	P & A Edwards	No added comments	Thank you for your response
26	3	P & A Edwards	N/A to NDP	N/A to NDP
26	4	P & A Edwards	No added comments	Thank you for your response
26	5	P & A Edwards	school & dr surgery	Comment noted - thank you for agreeing with Obj 5
27	1	D Glasspool	may said to be discriminatory	Comment noted
27	2	D Glasspool	No added comments	Thank you for your response
27	3	D Glasspool	School places available?	Comment noted - addressed at wvndp Objective 5
27	4	D Glasspool	Air Quality challenge?	Comment noted - see wvndp Objective 4
27	5	D Glasspool	No added comments	Thank you for your response
28	1	J Hawkins	No added comments	Thank you for your response
28	2	J Hawkins	No added comments	Thank you for your response
28	3	J Hawkins	No added comments	Thank you for your response
28	4	J Hawkins	No added comments	Thank you for your response
28	5	J Hawkins	No added comments	Thank you for your response
29	1	K & G Green	worked for yrs for village	Comment noted
29	2	K & G Green	green blt is what it means	Comment noted - thank you for agreeing withwvndpObj 2
29	3	K & G Green	emphatically for this	Comment noted and thank you for your response

Consultee ref no.	Question No.	Name of the consultee	Summary of comments - main point raised	WVNDP - Response and changes proposed
29	4	K & G Green	too much traffic now	Comment noted and thank you for your response
29	5	K & G Green	No added comments	Thank you for your response
30	1	D Green	new empl.sites must have more parking	Comment noted
30	2	D Green	No added comments	Thank you for your response
30	3	D Green	No added comments	Thank you for your response
30	4	D Green	No added comments	Thank you for your response
30	5	D Green	No added comments	Thank you for your response
31	1	J & M Webley	No added comments	Thank you for your response
31	2	J & M Webley	No added comments	Thank you for your response
31	3	J & M Webley	No added comments	Thank you for your response
31	4	J & M Webley	footpaths & cycleways to stockwood	Comment noted and thank you for your response
31	5	J & M Webley	No added comments	Thank you for your response
32	1	T Clark	No added comments	Thank you for your response
32	2	T Clark	No added comments	Thank you for your response
32	3	T Clark	No added comments	Thank you for your response
32	4	T Clark	new empl.sites must have more parking	Thank you for your response
32	5	T Clark	No added comments	Thank you for your response
33	1	J Kingston	imperative to remain a village	Comment noted - see wvndp Objective 1
33	2	J Kingston	V Imp.-Visual impact v. important	Comment noted - see wvndp Landscape Setting & Character
33	3	J Kingston	use similar designs and materials	Comment noted - see wvndp Village Character Appraisal
33	4	J Kingston	further traffic will impact on village	Comment noted - see wvndp Objective 4
33	5	J Kingston	need to maintain 'feel' of village	Comment noted and thank you for your response
34	1	D Spear	No added comments	Thank you for your response
34	2	D Spear	No added comments	Thank you for your response
34	3	D Spear	No added comments	Thank you for your response
34	4	D Spear	No added comments	Thank you for your response

Consultee ref no.	Question No.	Name of the consultee	Summary of comments - main point raised	WVNDP - Response and changes proposed
34	5	D Spear	No added comments	Thank you for your response
35	1	Mr.P & Miss R Heiron	No added comments	Thank you for your response
35	2	Mr.P & Miss R Heiron	No added comments	Thank you for your response
35	3	Mr.P & Miss R Heiron	No added comments	Thank you for your response
35	4	Mr.P & Miss R Heiron	No added comments	Thank you for your response
35	5	Mr.P & Miss R Heiron	No added comments	Thank you for your response
36	1	Mr & Mrs P Roach	No added comments	Thank you for your response
36	2	Mr & Mrs P Roach	No added comments	Thank you for your response
36	3	Mr & Mrs P Roach	Not enough 1-2 bed houses in village	Comment noted - see wvndpObjective 3
36	4	Mr & Mrs P Roach	No added comments	Thank you for your response
36	5	Mr & Mrs P Roach	No added comments	Thank you for your response
37	1	A & T Martin	No added comments	Thank you for your response
37	2	A & T Martin	No added comments	Thank you for your response
37	3	A & T Martin	No added comments	Thank you for your response
37	4	A & T Martin	No added comments	Thank you for your response
37	5	A & T Martin	No added comments	Thank you for your response
38	1	Mr & Mrs. G Bishop	No added comments	Thank you for your response
38	2	Mr & Mrs. G Bishop	No added comments	Thank you for your response
38	3	Mr & Mrs. G Bishop	No added comments	Thank you for your response
38	4	Mr & Mrs. G Bishop	No added comments	Thank you for your response
38	5	Mr & Mrs. G Bishop	No added comments	Thank you for your response

Consultee ref no.	Question No.	Name of the consultee	Summary of comments - main point raised	WVNDP - Response and changes proposed
39	1	D & B Clark	dormitories' break communities	Comment noted and thank you for your response
39	2	D & B Clark	green buffer provides recreation areas	Comment noted and thank you for your concurring response
39	3	D & B Clark	ensure safe movement in village	Comment noted and thank you for your concurring response
39	4	D & B Clark	already problem with traffic	Comment noted and thank you for your concurring response
39	5	D & B Clark	No added comments	Thank you for your response
40	1	R Agius & J Spencer	too many houses - village appeal goes	Comment noted
40	2	R Agius & J Spencer	green buffer - visual impact v . Important	Comment noted and thank you for your concurring response
40	3	R Agius & J Spencer	moderate development for village	Comment noted
40	4	R Agius & J Spencer	traffic at capacity	Thank you for your response which concurs with wvndp
40	5	R Agius & J Spencer	better roads, schools dr.surgery etc	Thank you for your response which concurs with wvndp
41	1	L Conybeare	No added comments	Thank you for your response
41	2	L Conybeare	no green buffer, no village	Comment noted
41	3	L Conybeare	No added comments	Thank you for your response
41	4	L Conybeare	A37 traffic - link road?	Comment noted but outside of remit of wvndp
41	5	L Conybeare	Social & Sports Facilities important	Comment noted and thank you for your response
42	1	A Turner & P Wells	No added comments	Thank you for your response
42	2	A Turner & P Wells	No added comments	Thank you for your response
42	3	A Turner & P Wells	No added comments	Thank you for your response
42	4	A Turner & P Wells	No added comments	Thank you for your response
42	5	A Turner & P Wells	school, shop, dr. surgery	Thank you for your response which concurs with wvndp

Consultee ref no.	Question No.	Name of the consultee	Summary of comments - main point raised	WVNDP - Response and changes proposed
43	1	M Ridler	No added comments	Thank you for your response
43	2	M Ridler	No added comments	Thank you for your response
43	3	M Ridler	No added comments	Thank you for your response
43	4	M Ridler	No added comments	Thank you for your response
43	5	M Ridler	No added comments	Thank you for your response
44	1	D Fletcher	No added comments	Thank you for your response
44	2	D Fletcher	No added comments	Thank you for your response
44	3	D Fletcher	No added comments	Thank you for your response
44	4	D Fletcher	No added comments	Thank you for your response
44	5	D Fletcher	No added comments	Thank you for your response
45	1	R Jenkins	identity hugely important	Comment noted - see wvndp Objective 1
45	2	R Jenkins	benefit to general well being imp	Comment noted and thank you for your response
45	3	R Jenkins	new rd to precede any more housing	Comment noted but outside of remit of wvndp
45	4	R Jenkins	A37? Need southern r.road	Comment noted but outside of remit of wvndp
45	5	R Jenkins	all facilities need improving	Thank you for your response which concurs with wvndp
46	1	P Melrose	No added comments	Thank you for your response
46	2	P Melrose	No added comments	Thank you for your response
46	3	P Melrose	No added comments	Thank you for your response
46	4	P Melrose	No added comments	Thank you for your response
46	5	P Melrose	No added comments	Thank you for your response
47	1	R & J Evans	must be adhered to	Thank you for your response which concurs with wvndp
47	2	R & J Evans	must be adhered to	Thank you for your response which concurs with wvndp
47	3	R & J Evans	very important	Thank you for your response which concurs with wvndp
47	4	R & J Evans	very very important	Thank you for your response which concurs with wvndp

Consultee ref no.	Question No.	Name of the consultee	Summary of comments - main point raised	WVNDP - Response and changes proposed
47	5	R & J Evans	impr.all facilities	Thank you for your response which concurs with wvndp
48	1	J Bates	No added comments	Thank you for your response
48	2	J Bates	No added comments	Thank you for your response
48	3	J Bates	No added comments	Thank you for your response
48	4	J Bates	No added comments	Thank you for your response
48	5	J Bates	No added comments	Thank you for your response
49	1	P Cook	No added comments	Thank you for your response
49	2	P Cook	No added comments	Thank you for your response
49	3	P Cook	No added comments	Thank you for your response
49	4	P Cook	No added comments	Thank you for your response
49	5	P Cook	No added comments	Thank you for your response
50	1	F Evey	No added comments	Thank you for your response
50	2	F Evey	No added comments	Thank you for your response
50	3	F Evey	No added comments	Thank you for your response
50	4	F Evey	No added comments	Thank you for your response
50	5	F Evey	No added comments	Thank you for your response
51	1	B Osborne	No added comments	Thank you for your response
51	2	B Osborne	No added comments	Thank you for your response
51	3	B Osborne	No added comments	Thank you for your response
51	4	B Osborne	No added comments	Thank you for your response
51	5	B Osborne	No added comments	Thank you for your response
52	1	G Day	No added comments	Thank you for your response
52	2	G Day	No added comments	Thank you for your response
52	3	G Day	No added comments	Thank you for your response
52	4	G Day	No added comments	Thank you for your response
52	5	G Day	No added comments	Thank you for your response
53	1	S Rapsey	No added comments	Thank you for your response
53	2	S Rapsey	No added comments	Thank you for your response
53	3	S Rapsey	No added comments	Thank you for your response
53	4	S Rapsey	No added comments	Thank you for your response

Consultee ref no.	Question No.	Name of the consultee	Summary of comments - main point raised	WVNDP - Response and changes proposed
53	5	S Rapsey	No added comments	Thank you for your response
54	1	Mr & Mrs B Saunders	No added comments	Thank you for your response
54	2	Mr & Mrs B Saunders	No added comments	Thank you for your response
54	3	Mr & Mrs B Saunders	No added comments	Thank you for your response
54	4	Mr & Mrs B Saunders	No added comments	Thank you for your response
54	5	Mr & Mrs B Saunders	No added comments	Thank you for your response
55	1	J Day	No added comments	Thank you for your response
55	2	J Day	No added comments	Thank you for your response
55	3	J Day	No added comments	Thank you for your response
55	4	J Day	No added comments	Thank you for your response
55	5	J Day	No added comments	Thank you for your response
56	1	M Meacham	Heritage & History Imp. Water usage imp	Comment noted - see wvndp Objective 3
56	2	M Meacham	too many green belts lost to building	Comment noted - see wvndp Objective 2
56	3	M Meacham	wildlife forgotten	Comment noted - see wvndp Objective 2
56	4	M Meacham	too many large vehicles thro village	Comment noted - see wvndp Objective 4
56	5	M Meacham	future growth - not good for village	Comment noted
57	1	Mr & Mrs. F Lewis	No added comments	Thank you for your response
57	2	Mr & Mrs F Lewis	No added comments	Thank you for your response
57	3	Mr & Mrs F Lewis	No added comments	Thank you for your response
57	4	Mr & Mrs F Lewis	No added comments	Thank you for your response
57	5	Mr & Mrs F Lewis	No added comments	Thank you for your response
58	1	A Denmead	No added comments	Thank you for your response
58	2	A Denmead	No added comments	Thank you for your response
58	3	A Denmead	No added comments	Thank you for your response
58	4	A Denmead	No added comments	Thank you for your response
58	5	A Denmead	No added comments	Thank you for your response

Consultee ref no.	Question No.	Name of the consultee	Summary of comments - main point raised	WVNDP - Response and changes proposed
59	1	Mr & Mrs R W Targett	No added comments	Thank you for your response
59	2	Mr & Mrs R W Targett	No added comments	Thank you for your response
59	3	Mr & Mrs R W Targett	No added comments	Thank you for your response
59	4	Mr & Mrs R W Targett	No added comments	Thank you for your response
59	5	Mr & Mrs R W Targett	No added comments	Thank you for your response
60	1	J O'Hara	Existing styles of buildings maintained	Comment noted - see wvndp Objective 3
60	2	J O'Hara	N/A to NDP	Comment noted
60	3	J O'Hara	seems a repeat of 1.	Comment noted
60	4	J O'Hara	more houses = cars/pollution/facilities	Comment noted
60	5	J O'Hara	discreet local shop/café/restaurant	Comment noted
61	1	Mr & Mrs D Pearce	No added comments	Thank you for your response
61	2	Mr & Mrs D Pearce	No added comments	Thank you for your response
61	3	Mr & Mrs D Pearce	No added comments	Thank you for your response
61	4	Mr & Mrs D Pearce	No added comments	Thank you for your response
61	5	Mr & Mrs D Pearce	No added comments	Thank you for your response
62	1	D B Bennett	No added comments	Thank you for your response
62	2	D B Bennett	No added comments	Thank you for your response
62	3	D B Bennett	No added comments	Thank you for your response
62	4	D B Bennett	No added comments	Thank you for your response
62	5	D B Bennett	No added comments	Thank you for your response
63	1	B Hartshane	Need input to type of housing	Comment noted - see wvndp Objective 3
63	2	B Hartshane	retain village and its character	Comment noted
63	3	B Hartshane	houses that are needed,not just houses	Comment noted
63	4	B Hartshane	survey of traffic using local roads	Comment noted - see Traffic Survey Report
63	5	B Hartshane	more control of traffic - speed,parking	Comment noted and thank you for your response

Consultee ref no.	Question No.	Name of the consultee	Summary of comments - main point raised	WVNDP - Response and changes proposed
64	1	K Chivers	maintain what is left of village identity	Comment noted and thank you for your response
64	2	K Chivers	No added comments	Thank you for your response
64	3	K Chivers	more affordable housing	Comment noted - see wvndp Objective 3
64	4	K Chivers	A37 - no more traffic	Comment noted - see wvndp Objective 5
64	5	K Chivers	No added comments	Comment noted
65	1	A & A Bathwell	affordable and mixed housing	Comment noted and thank you for your concurring response
65	2	A & A Bathwell	No added comments	Thank you for your response
65	3	A & A Bathwell	No added comments	Thank you for your response
65	4	A & A Bathwell	monitoring of Air Quality	Comment noted and thank you for your concurring response
65	5	A & A Bathwell	No added comments	Thank you for your response
66	1	J & D Williams	No added comments	Thank you for your response
66	2	J & D Williams	No added comments	Thank you for your response
66	3	J & D Williams	No added comments	Thank you for your response
66	4	J & D Williams	No added comments	Thank you for your response
66	5	J & D Williams	No added comments	Thank you for your response
67	1	L Webb	agree to all objectives	Comment noted and thank you for your response
67	2	L Webb	agree to all objectives	Comment noted and thank you for your response
67	3	L Webb	agree to all objectives	Comment noted and thank you for your response
67	4	L Webb	agree to all objectives	Comment noted and thank you for your response
67	5	L Webb	agree to all objectives	Comment noted and thank you for your response
68	1	P Burgess	No added comments	Thank you for your response
68	2	P Burgess	No added comments	Thank you for your response
68	3	P Burgess	No added comments	Thank you for your response

Consultee ref no.	Question No.	Name of the consultee	Summary of comments - main point raised	WVNDP - Response and changes proposed
68	4	P Burgess	No added comments	Thank you for your response
68	5	P Burgess	No added comments	Thank you for your response
69	1	D Miller	review the NP every 3 not 5 years	Comment noted
69	2	D Miller	No added comments	Thank you for your response
69	3	D Miller	agree/not achievable with current infr.	Comment noted and thank you for your response
69	4	D Miller	extra housing - traffic chaos	Comment noted and thank you for your response
69	5	D Miller	proper infr.before housing.	Comment noted and thank you for your response
70	1	Norris	No added comments	Thank you for your response
70	2	Norris	No added comments	Thank you for your response
70	3	Norris	No added comments	Thank you for your response
70	4	Norris	No added comments	Thank you for your response
70	5	Norris	No added comments	Thank you for your response
71	1	S Ives	traffic control	Comment noted and thank you for your response
71	2	S Ives	infrastructure delivered before housing	Comment noted and thank you for your response
71	3	S Ives	more parking spaces	Comment noted and thank you for your response
71	4	S Ives	A37 full,more will impact on health	Comment noted and thank you for your response
71	5	S Ives	increase social facilities	Comment noted and thank you for your response
72	1	Mr & Mrs Gunton	No added comments	Thank you for your response
72	2	Mr & Mrs Gunton	No added comments	Thank you for your response
72	3	Mr & Mrs Gunton	No added comments	Thank you for your response
72	4	Mr & Mrs Gunton	No added comments	Thank you for your response
72	5	Mr & Mrs Gunton	No added comments	Thank you for your response
73	1	S Matthews	No added comments	Thank you for your response

Consultee ref no.	Question No.	Name of the consultee	Summary of comments - main point raised	WVNDP - Response and changes proposed
73	2	S Matthews	No added comments	Thank you for your response
73	3	S Matthews	No added comments	Thank you for your response
73	4	S Matthews	No added comments	Thank you for your response
73	5	S Matthews	shop	Comment noted and thank you for your response
74	1	J Dalton	Protect Cemetery	Comment noted
74	2	J Dalton	No added comments	Thank you for your response
74	3	J Dalton	No added comments	Thank you for your response
74	4	J Dalton	traffic too much from everywhere-P&R?	Comment noted
74	5	J Dalton	No added comments	Thank you for your response
75	1	P Waldbridge	No added comments	Thank you for your response
75	2	P Waldbridge	No added comments	Thank you for your response
75	3	P Waldbridge	No added comments	Thank you for your response
75	4	P Waldbridge	No added comments	Thank you for your response
75	5	P Waldbridge	newsagent/shop	Thank you for your concurring comments
76	1	G Barratt	No added comments	Thank you for your response
76	2	G Barratt	No added comments	Thank you for your response
76	3	G Barratt	No added comments	Thank you for your response
76	4	G Barratt	No added comments	Thank you for your response
76	5	G Barratt	No added comments	Thank you for your response
77	1	Mr & Mrs Greatbanks	N/A to NDP	Thank you for your response
77	2	Mr & Mrs Greatbanks	No added comments	Thank you for your response
77	3	Mr & Mrs Greatbanks	No added comments	Thank you for your response
77	4	Mr & Mrs Greatbanks	No added comments	Thank you for your response
77	5	Mr & Mrs Greatbanks	No added comments	Thank you for your response
78	1	B & H Bloomfield	No added comments	Thank you for your response

Consultee ref no.	Question No.	Name of the consultee	Summary of comments - main point raised	WVNDP - Response and changes proposed
78	2	B & H Bloomfield	No added comments	Thank you for your response
78	3	B & H Bloomfield	No added comments	Thank you for your response
78	4	B & H Bloomfield	No added comments	Thank you for your response
78	5	B & H Bloomfield	No added comments	Thank you for your response
79	1	V Perry	No added comments	Thank you for your response
79	2	V Perry	No added comments	Thank you for your response
79	3	V Perry	No added comments	Thank you for your response
79	4	V Perry	No added comments	Thank you for your response
79	5	V Perry	No added comments	Thank you for your response
80	1	Mr & Mrs Fricker	No added comments	Thank you for your response
80	2	Mr & Mrs Fricker	No added comments	Thank you for your response
80	3	Mr & Mrs Fricker	No added comments	Thank you for your response
80	4	Mr & Mrs Fricker	No added comments	Thank you for your response
80	5	Mr & Mrs Fricker	No added comments	Thank you for your response
81	1	N Smith	No added comments	Thank you for your response
81	2	N Smith	No added comments	Thank you for your response
81	3	N Smith	more information needed	Comment noted but addressed at wvndp Objective 3
81	4	N Smith	No added comments	Thank you for your response
81	5	N Smith	No added comments	Thank you for your response
82	1	R Cox	village losing identity if too much bldg.	Thank you for your concurring comments
82	2	R Cox	look at Bilbie Green - was green belt	Comment noted
82	3	R Cox	must blend in with village style	Thank you for your concurring comments
82	4	R Cox	road safety a priority	Thank you for your concurring comments
82	5	R Cox	more amenities	Comment noted and addressed at wvndp Objective 5
83	1	M & B Edwards	No added comments	Thank you for your response
83	2	M & B Edwards	No added comments	Thank you for your response
83	3	M & B Edwards	No added comments	Thank you for your response
83	4	M & B Edwards	Tr Light & crossing & Ped Cross in village	Comment noted
83	5	M & B Edwards	No added comments	Thank you for your response

Consultee ref no.	Question No.	Name of the consultee	Summary of comments - main point raised	WVNDP - Response and changes proposed
84	1	J M Hill	No added comments	Thank you for your response
84	2	J M Hill	biodiversity important	Thank you for your concurring comments
84	3	J M Hill	200 houses too much for area	Comment noted
84	4	J M Hill	A37 full, infrastructure before dev.	Thank you for your concurring comments
84	5	J M Hill	No added comments	Thank you for your response
85	1	R A Davis	No added comments	Thank you for your response
85	2	R A Davis	No added comments	Thank you for your response
85	3	R A Davis	No added comments	Thank you for your response
85	4	R A Davis	No added comments	Thank you for your response
85	5	R A Davis	No added comments	Thank you for your response
86	1	P & B Ogborne	No added comments	Thank you for your response
86	2	P & B Ogborne	No added comments	Thank you for your response
86	3	P & B Ogborne	No added comments	Thank you for your response
86	4	P & B Ogborne	cannot cope with any more traffic	Thank you for your concurring comments
86	5	P & B Ogborne	No added comments	Thank you for your response
87	1	R Chambers	No added comments	Thank you for your response
87	2	R Chambers	No added comments	Thank you for your response
87	3	R Chambers	No added comments	Thank you for your response
87	4	R Chambers	No added comments	Thank you for your response
87	5	R Chambers	No added comments	Thank you for your response
88	1	J Winter	No added comments	Thank you for your response
88	2	J Winter	No added comments	Thank you for your response
88	3	J Winter	No added comments	Thank you for your response
88	4	J Winter	No added comments	Thank you for your response
88	5	J Winter	impr for disabled.sleep lane & stauntonlane junction is dangerous	Comment noted
89	1	Webb	w.v. never be part of bristol	Thank you for your response
89	2		natural barrier must be kept	Thank you for your response
89	3	Webb	dev only be proportion of current figures	Thank you for your response
89	4	Webb	No added comments	Thank you for your response
89	5	Webb	infrastructure delivered before housing	Thank you for your concurring comments

Consultee ref no.	Question No.	Name of the consultee	Summary of comments - main point raised	WVNDP - Response and changes proposed
90	1	A Percival	impr schools dr.shops dentist	Thank you for your concurring comments
90	2	A Percival	No added comments	Thank you for your response
90	3	A Percival	No added comments	Thank you for your response
90	4	A Percival	No added comments	Thank you for your response
90	5	A Percival	No added comments	Thank you for your response
91	1	N Towe	No added comments	Thank you for your response
91	2	N Towe	No added comments	Thank you for your response
91	3	N Towe	No added comments	Thank you for your response
91	4	N Towe	No added comments	Thank you for your response
91	5	N Towe	No added comments	Thank you for your response
92	1	Sullivan & Healy	No added comments	Thank you for your response
92	2	Sullivan & Healy	No added comments	Thank you for your response
92	3	Sullivan & Healy	No added comments	Thank you for your response
92	4	Sullivan & Healy	No added comments	Thank you for your response
92	5	Sullivan & Healy	No added comments	Thank you for your response
93	1	D Cousins	affordable houses should be for all	Comment noted
93	2	D Cousins	No added comments	Thank you for your response
93	3	D Cousins	No added comments	Thank you for your response
93	4	D Cousins	No added comments	Thank you for your response
93	5	D Cousins	No added comments	Thank you for your response
94	1	Mr & Mrs Milkins	No added comments	Thank you for your response
94	2	Mr & Mrs Milkins	No added comments	Thank you for your response
94	3	Mr & Mrs Milkins	No added comments	Thank you for your response
94	4	Mr & Mrs Milkins	No added comments	Thank you for your response
94	5	Mr & Mrs Milkins	No added comments	Thank you for your response
95	1	L F Tucker	No added comments	Thank you for your response
95	2	L F Tucker	No added comments	Thank you for your response
95	3	L F Tucker	No added comments	Thank you for your response
95	4	L F Tucker	No added comments	Thank you for your response
95	5	L F Tucker	No added comments	Thank you for your response
96	1	A Ford	No added comments	Thank you for your response

Consultee ref no.	Question No.	Name of the consultee	Summary of comments - main point raised	WVNDP - Response and changes proposed
96	2	A Ford	No added comments	Thank you for your response
96	3	A Ford	No added comments	Thank you for your response
96	4	A Ford	No added comments	Thank you for your response
96	5	A Ford	No added comments	Thank you for your response
97	1	Mr & Mrs J Holder	No added comments	Thank you for your response
97	2	Mr & Mrs J Holder	important for walking for pleasure	Comment noted and thank you for your response
97	3	Mr & Mrs J Holder	No added comments	Thank you for your response
97	4	Mr & Mrs J Holder	A37 too busy, air pollution?	Thank you for your concurring comments
97	5	Mr & Mrs J Holder	No added comments	Thank you for your response
98	1	C Stewart	No added comments	Thank you for your response
98	2	C Stewart	No added comments	Thank you for your response
98	3	C Stewart	No added comments	Thank you for your response
98	4	C Stewart	No added comments	Thank you for your response
98	5	C Stewart	No added comments	Thank you for your response
99	1	S & A Philpott	No added comments	Thank you for your response
99	2	S & A Philpott	No added comments	Thank you for your response
99	3	S & A Philpott	No added comments	Thank you for your response
99	4	S & A Philpott	No added comments	Thank you for your response
99	5	S & A Philpott	No added comments	Thank you for your response
100	1	A Tucker	time of residence needs clarifying	Comment noted
100	2	A Tucker	most important	Thank you for your concurring comments
100	3	A Tucker	No added comments	Thank you for your response
100	4	A Tucker	A37 traffic flow must not be impeded	Comment noted
100	5	A Tucker	No added comments	Thank you for your response
101	1	Mr & Mrs Norman	maintain village character	Thank you for your concurring comments
101	2	Mr & Mrs Norman	maintain village character	Thank you for your concurring comments
101	3	Mr & Mrs Norman	preference on existing residents	Thank you for your concurring comments
101	4	Mr & Mrs Norman	free flow of traffic would be good	Comment noted
101	5	Mr & Mrs Norman	local community	Thank you for your concurring comments
102	1	S & J Fearnley	village should be left alone	Comment noted

Consultee ref no.	Question No.	Name of the consultee	Summary of comments - main point raised	WVNDP - Response and changes proposed
102	2	S & J Fearnley	green buffer for wildlife and humans	Thank you for your concurring comments
102	3	S & J Fearnley	nothing unless infrastructure addressed	Thank you for your concurring comments
102	4	S & J Fearnley	A37 now dangerous	Thank you for your concurring comments
102	5	S & J Fearnley	new infrastructure before houses	Thank you for your concurring comments
103	1	H & D Thatcher	No added comments	Thank you for your response
103	2	H & D Thatcher	No added comments	Thank you for your response
103	3	H & D Thatcher	No added comments	Thank you for your response
103	4	H & D Thatcher	No added comments	Thank you for your response
103	5	H & D Thatcher	No added comments	Thank you for your response
104	1	A & B Sims	careful of no. of affordable houses	Comment noted
104	2	A & B Sims	Brown field sites 1st. GB is sacrosanct	Comment noted
104	3	A & B Sims	No added comments	Comment noted
104	4	A & B Sims	20 mph thro village. Dangerous speeds	Comment noted
104	5	A & B Sims	speed limit would help pedestrians	Comment noted and thank you for your response
105	1	L Hart	N/A to NDP	Comment noted
105	2	L Hart	No added comments	Thank you for your response
105	3	L Hart	No added comments	Thank you for your response
105	4	L Hart	roundabouts/one way traffic?	Comment noted and thank you for your response
105	5	L Hart	remove tr lights by Toby Inn	Comment noted
106	1	J Russ	No added comments	Thank you for your response
106	2	J Russ	No added comments	Thank you for your response
106	3	J Russ	No added comments	Thank you for your response
106	4	J Russ	No added comments	Thank you for your response
106	5	J Russ	imp traffic problems	Comment noted and thank you for your response
107	1	N Lowndes	N/A to NDP	Thank you for your response
107	2	N Lowndes	N/A to NDP	Thank you for your response
107	3	N Lowndes	N/A to NDP	Thank you for your response
107	4	N Lowndes	N/A to NDP	Thank you for your response

Consultee ref no.	Question No.	Name of the consultee	Summary of comments - main point raised	WVNDP - Response and changes proposed
107	5	N Lowndes	N/A to NDP	Thank you for your response
108	1	J Eaton	totally agree	Comment noted and thank you for your concurring response
108	2	J Eaton	maintain village identity sep to bristol	Comment noted and thank you for your concurring response
108	3	J Eaton	absolutely	Comment noted and thank you for your concurring response
108	4	J Eaton	No added comments	Thank you for your response
108	5	J Eaton	No added comments	Thank you for your response
109	1	G & R House	agree with all points	Thank you for your concurring comments
109	2	G & R House	must maintain - very important	Thank you for your concurring comments
109	3	G & R House	important to maintain village character	Thank you for your concurring comments
109	4	G & R House	A37 extremely busy already	Thank you for your concurring comments
109	5	G & R House	lovely village -	Thank you for your response
110	1	Mr & Mrs MJ Campbell	No added comments	Thank you for your response
110	2	Mr & Mrs MJ Campbell	No added comments	Thank you for your response
110	3	Mr & Mrs MJ Campbell	No added comments	Thank you for your response
110	4	Mr & Mrs MJ Campbell	No added comments	Thank you for your response
110	5	Mr & Mrs MJ Campbell	No added comments	further comments N/A to NDP
111	1	K & F Barton	No added comments	Thank you for your response
111	2	K & F Barton	No added comments	Thank you for your response
111	3	K & F Barton	No added comments	Thank you for your response
111	4	K & F Barton	No added comments	Thank you for your response
111	5	K & F Barton	No added comments	further comments N/A to NDP
112	1	C M Walsh	No added comments	Thank you for your response
112	2	C M Walsh	g.b. must be preserved	Thank you for your concurring comments

Consultee ref no.	Question No.	Name of the consultee	Summary of comments - main point raised	WVNDP - Response and changes proposed
112	3	C M Walsh	No added comments	Thank you for your response
112	4	C M Walsh	No added comments	Thank you for your response
112	5	C M Walsh	No added comments	Thank you for your response
113	1	R. Davis	No added comments	Thank you for your response
113	2	R. Davis	No added comments	Thank you for your response
113	3	R. Davis	No added comments	Thank you for your response
113	4	R. Davis	No added comments	Thank you for your response
113	5	R. Davis	No added comments	Thank you for your response
114	1	G F Probert	N/A to NDP	Thank you for your response
114	2	G F Probert	No added comments	Thank you for your response
114	3	G F Probert	No added comments	Thank you for your response
114	4	G F Probert	By Pass	Comment noted
114	5	G F Probert	No added comments	Thank you for your response
115	1	J & A Tooze	No added comments	Thank you for your response
115	2	J & A Tooze	No added comments	Thank you for your response
115	3	J & A Tooze	No added comments	Thank you for your response
115	4	J & A Tooze	No added comments	Thank you for your response
115	5	J & A Tooze	No added comments	Thank you for your response
116	1	R W Davies	No added comments	Thank you for your response
116	2	R W Davies	No added comments	Thank you for your response
116	3	R W Davies	No added comments	Thank you for your response
116	4	R W Davies	No added comments	Thank you for your response
116	5	R W Davies	No added comments	Thank you for your response
117	1	Mr & Mrs Cepek	No added comments	Thank you for your response
117	2	Mr & Mrs Cepek	No added comments	Thank you for your response
117	3	Mr & Mrs Cepek	No added comments	Thank you for your response
117	4	Mr & Mrs Cepek	No added comments	Thank you for your response
117	5	Mr & Mrs Cepek	No added comments	Thank you for your response
118	1	Y Sweeney	No added comments	Thank you for your response
118	2	Y Sweeney	No added comments	Thank you for your response
118	3	Y Sweeney	No added comments	Thank you for your response

Consultee ref no.	Question No.	Name of the consultee	Summary of comments - main point raised	WVNDP - Response and changes proposed
118	4	Y Sweeney	No added comments	Thank you for your response
118	5	Y Sweeney	No added comments	Thank you for your response
119	1	S M Bryant	No added comments	Thank you for your response
119	2	S M Bryant	No added comments	Thank you for your response
119	3	S M Bryant	No added comments	Thank you for your response
119	4	S M Bryant	No added comments	Thank you for your response
119	5	S M Bryant	No added comments	Thank you for your response
120	1	A Beake	No added comments	Thank you for your response
120	2	A Beake	No added comments	Thank you for your response
120	3	A Beake	No added comments	Thank you for your response
120	4	A Beake	No added comments	Thank you for your response
120	5	A Beake	No added comments	Thank you for your response
121	1	C Leando	No added comments	Thank you for your response
121	2	C Leando	No added comments	Thank you for your response
121	3	C Leando	No added comments	Thank you for your response
121	4	C Leando	No added comments	Thank you for your response
121	5	C Leando	No added comments	Thank you for your response
122	1	C Luker	mix of houses,more local employment	Comment noted - see wvndp Objectives 1 & 3
122	2	C Luker	green buffer v important to village	Thank you for your concurring response
122	3	C Luker	maintain character of village	Thank you for your concurring response
122	4	C Luker	Air Q assessment for new dev.	Comment noted - see wvndp Objective 4
122	5	C Luker	shop, dr.surgery etc	Thank you for your concurring response
123	1	Mr & Mrs LH Wills	village is important	Thank you for your response
123	2	Mr & Mrs LH Wills	green belt important	Thank you for your concurring response
123	3	Mr & Mrs LH Wills	traffic very busy throughout village	Thank you for your concurring response
123	4	Mr & Mrs LH Wills	A37 a very busy road + HGVs	Thank you for your concurring response
123	5	Mr & Mrs LH Wills	Please listen to locals	Comment noted
124	1	J Belnarvis	keep character	Thank you for your concurring response
124	2	J Belnarvis	save wildlife	Thank you for your concurring response
124	3	J Belnarvis	traffic control/speed/weight	Thank you for your concurring response

Consultee ref no.	Question No.	Name of the consultee	Summary of comments - main point raised	WVNDP - Response and changes proposed
124	4	J Belnarvis	Air Q assessment for new dev.	Thank you for your response - see wvndp Objective 4
124	5	J Belnarvis	over promise & under deliver	Comment noted
125	1	S & S Cheshire	agree with all points	Thank you for your concurring response
125	2	S & S Cheshire	buffer very important to village	Thank you for your concurring response
125	3	S & S Cheshire	No added comments	Thank you for your response
125	4	S & S Cheshire	No added comments	Thank you for your response
125	5	S & S Cheshire	No added comments	Thank you for your response
126	1	Mr & Mrs Gerrish	maintain village identity sep to bristol	Thank you for your concurring response
126	2	Mr & Mrs Gerrish	green buffer - wildlife	Thank you for your concurring response
126	3	Mr & Mrs Gerrish	new infrastructure before houses	Thank you for your concurring response
126	4	Mr & Mrs Gerrish	A37 gridlocked already	Thank you for your concurring response
126	5	Mr & Mrs Gerrish	play areas, shops	Thank you for your concurring response
127	1	P McGillan	No added comments	Thank you for your response
127	2	P McGillan	No added comments	Thank you for your response
127	3	P McGillan	No added comments	Thank you for your response
127	4	P McGillan	No added comments	Thank you for your response
127	5	P McGillan	No added comments	Thank you for your response
128	1	A Chambers	No added comments	Thank you for your response
128	2	A Chambers	critical for village	Thank you for your response
128	3	A Chambers	No added comments	Thank you for your response
128	4	A Chambers	No added comments	Thank you for your response
128	5	A Chambers	No added comments	Thank you for your response
129	1	R Chandler	No added comments	Thank you for your response
129	2	R Chandler	important for village	Thank you for your concurring response
129	3	R Chandler	No added comments	Thank you for your response
129	4	R Chandler	No added comments	Thank you for your response
129	5	R Chandler	No added comments	Thank you for your response
130	1	H Keen	No added comments	Thank you for your response
130	2	H Keen	No added comments	Thank you for your response
130	3	H Keen	No added comments	Thank you for your response

Consultee ref no.	Question No.	Name of the consultee	Summary of comments - main point raised	WVNDP - Response and changes proposed
130	4	H Keen	No added comments	Thank you for your response
130	5	H Keen	No added comments	Thank you for your response
131	1	T Carter	No added comments	Thank you for your response
131	2	T Carter	No added comments	Thank you for your response
131	3	T Carter	No added comments	Thank you for your response
131	4	T Carter	By/Pass/Link road	Comment noted - tried to address at wvndp Objective 4
131	5	T Carter	No added comments	Thank you for your response
132	1	Mr & Mrs Day	No added comments	Thank you for your response
132	2	Mr & Mrs Day	No added comments	Thank you for your response
132	3	Mr & Mrs Day	No added comments	Thank you for your response
132	4	Mr & Mrs Day	No added comments	Thank you for your response
132	5	Mr & Mrs Day	No added comments	Thank you for your response
133	1	Mr & Mrs Biernat	No added comments	Thank you for your response
133	2	Mr & Mrs Biernat	No added comments	Thank you for your response
133	3	Mr & Mrs Biernat	No added comments	Thank you for your response
133	4	Mr & Mrs Biernat	No added comments	Thank you for your response
133	5	Mr & Mrs Biernat	No added comments	Thank you for your response
134	1	D Biernat	No added comments	Thank you for your response
134	2	D Biernat	No added comments	Thank you for your response
134	3	D Biernat	No added comments	Thank you for your response
134	4	D Biernat	No added comments	Thank you for your response
134	5	D Biernat	No added comments	Thank you for your response
135	1	C Cashley	No added comments	Thank you for your response
135	2	C Cashley	No added comments	Thank you for your response
135	3	C Cashley	No added comments	Thank you for your response
135	4	C Cashley	No added comments	Thank you for your response
135	5	C Cashley	No added comments	Thank you for your response
136	1	A Cashley	No added comments	Thank you for your response
136	2	A Cashley	No added comments	Thank you for your response
136	3	A Cashley	No added comments	Thank you for your response

Consultee ref no.	Question No.	Name of the consultee	Summary of comments - main point raised	WVNDP - Response and changes proposed
136	4	A Cashley	No added comments	Thank you for your response
136	5	A Cashley	No added comments	Thank you for your response
137	1	M Barnes	No added comments	Thank you for your response
137	2	M Barnes	No added comments	Thank you for your response
137	3	M Barnes	No added comments	Thank you for your response
137	4	M Barnes	No added comments	Thank you for your response
137	5	M Barnes	No added comments	Thank you for your response
138	1	H Craig C Dilloppoulus	No added comments	Thank you for your response
138	2	H Craig C Dilloppoulus	retain views of dundry hill & st.Nicholas	Thank you for your response - see wvndp Landscape setting
138	3	H Craig C Dilloppoulus	No added comments	Thank you for your response
138	4	H Craig C Dilloppoulus	A37 already dangerous with traffic	Comment noted
138	5	H Craig C Dilloppoulus	No added comments	Thank you for your response
139	1	T Davies. N Faulkner	No added comments	Thank you for your response
139	2	T Davies. N Faulkner	No added comments	Thank you for your response
139	3	T Davies. N Faulkner	No added comments	Thank you for your response
139	4	T Davies. N Faulkner	No added comments	Thank you for your response
139	5	T Davies. N Faulkner	No added comments	Thank you for your response
140	1	S & L Genge	No added comments	Thank you for your response
140	2	S & L Genge	No added comments	Thank you for your response
140	3	S & L Genge	No added comments	Thank you for your response
140	4	S & L Genge	No added comments	Thank you for your response

Consultee ref no.	Question No.	Name of the consultee	Summary of comments - main point raised	WVNDP - Response and changes proposed
140	5	S & L Genge	No added comments	Thank you for your response
141	1	Mr & Mrs DK Pearce	No added comments	Thank you for your response
141	2	Mr & Mrs DK Pearce	No added comments	Thank you for your response
141	3	Mr & Mrs DK Pearce	No added comments	Thank you for your response
141	4	Mr & Mrs DK Pearce	No added comments	Thank you for your response
141	5	Mr & Mrs DK Pearce	No added comments	Thank you for your response
142	1	Mr & Mrs M Shortman	No added comments	Thank you for your response
142	2	Mr & Mrs M Shortman	No added comments	Thank you for your response
142	3	Mr & Mrs M Shortman	No added comments	Thank you for your response
142	4	Mr & Mrs M Shortman	No added comments	Thank you for your response
142	5	Mr & Mrs M Shortman	No added comments	Thank you for your response
143	1	Justin Jones	No added comments	Thank you for your response
143	2	Justin Jones	No added comments	Thank you for your response
143	3	Justin Jones	No added comments	Thank you for your response
143	4	Justin Jones	No added comments	Thank you for your response
143	5	Justin Jones	No added comments	Thank you for your response
144	1	J & L Blurton	Careful design of new bld	Comment noted
144	2	J & L Blurton	green buffer essential for village	Comment noted
144	3	J & L Blurton	safe walkways & crossings	Comment noted
144	4	J & L Blurton	A37 and lanes stretched to max	Comment noted
144	5	J & L Blurton	more facilities	Comment noted

Consultee ref no.	Question No.	Name of the consultee	Summary of comments - main point raised	WVNDP - Response and changes proposed
145	1	N Morgan	No added comments	Thank you for your response
145	2	N Morgan	strongly agree with WV2.1	Thank you for your concurring response
145	3	N Morgan	this is important	Thank you for your concurring response
145	4	N Morgan	Air Q & safe ped & cycleways important	Thank you for your concurring response
145	5	N Morgan	childrens playgroup would be good	Thank you for your concurring response
146	1	S J Redman	No added comments	Thank you for your response
146	2	S J Redman	No added comments	Thank you for your response
146	3	S J Redman	No added comments	Thank you for your response
146	4	S J Redman	No added comments	Thank you for your response
146	5	S J Redman	No added comments	Thank you for your response
147	1	Mr & Mrs Bigwell	mix of houses	Thank you for your concurring response
147	2	Mr & Mrs Bigwell	must be maintained	Thank you for your concurring response
147	3	Mr & Mrs Bigwell	No added comments	Comment noted
147	4	Mr & Mrs Bigwell	roads must be improved before bld.	Thank you for your concurring response
147	5	Mr & Mrs Bigwell	services must grow with village	Comment noted
148	1	D Gasper	No added comments	Thank you for your response
148	2	D Gasper	No added comments	Thank you for your response
148	3	D Gasper	No added comments	Thank you for your response
148	4	D Gasper	No added comments	Thank you for your response
148	5	D Gasper	No added comments	Thank you for your response
149	1	M Bailey	No added comments	Thank you for your response
149	2	M Bailey	No added comments	Thank you for your response
149	3	M Bailey	look at Port Grimmand in S France	Comment noted
149	4	M Bailey	No added comments	Thank you for your response
149	5	M Bailey	No added comments	Thank you for your response
150	1	R Dean & S Chilcott	more affordable housing & employment	Thank you for your concurring response
150	2	R Dean & S Chilcott	green belt maintains the village	Thank you for your concurring response
150	3	R Dean & S Chilcott	road system cannot cope	Thank you for your concurring response

Consultee ref no.	Question No.	Name of the consultee	Summary of comments - main point raised	WVNDP - Response and changes proposed
150	4	R Dean & S Chilcott	A37 full. Air Quality?	Thank you for your concurring response
150	5	R Dean & S Chilcott	no need for shop,play areas	Comment noted
151	1	T Dean	survey must be unbiased and correct	Comment noted and replied to
151	2	T Dean	No added comments	Thank you for your response
151	3	T Dean	roads cannot cope	Comment noted
151	4	T Dean	problems with roads	Comment noted
151	5	T Dean	don't need shops.dont move school	Comment noted and replied to
152	1	P Young	No added comments	Thank you for your response
152	2	P Young	maintain village	Thank you for your concurring response
152	3	P Young	more affordable houses for local youth	Thank you for your concurring response
152	4	P Young	Roads very busy	Thank you for your concurring response
152	5	P Young	No added comments	Thank you for your response
153	1	J M Young	No added comments	Thank you for your response
153	2	J M Young	No added comments	Thank you for your response
153	3	J M Young	No added comments	Thank you for your response
153	4	J M Young	No added comments	Thank you for your response
153	5	J M Young	No added comments	Thank you for your response
154	1	Mr & Mrs Zawadzki	No added comments	Thank you for your response
154	2	Mr & Mrs Zawadzki	buffer very important to village	Thank you for your concurring response
154	3	Mr & Mrs Zawadzki	pavements improved	Thank you for your concurring response
154	4	Mr & Mrs Zawadzki	Air Q big issue	Thank you for your concurring response
154	5	Mr & Mrs Zawadzki	Dr Surgery,shop	Thank you for your concurring response
155	1	S Moore	No added comments	Thank you for your response
155	2	S Moore	No added comments	Thank you for your response

Consultee ref no.	Question No.	Name of the consultee	Summary of comments - main point raised	WVNDP - Response and changes proposed
155	3	S Moore	No added comments	Thank you for your response
155	4	S Moore	No added comments	Thank you for your response
155	5	S Moore	No added comments	Thank you for your response
156	1	S Dorgan	No added comments	Thank you for your E response
156	2	S Dorgan	No added comments	Thank you for your E response
156	3	S Dorgan	No added comments	Thank you for your E response
156	4	S Dorgan	No added comments	Thank you for your E response
156	5	S Dorgan	No added comments	Thank you for your E response
157	1	R Dorgan	No added comments	Thank you for your E response
157	2	R Dorgan	No added comments	Thank you for your E response
157	3	R Dorgan	No added comments	Thank you for your E response
157	4	R Dorgan	No added comments	Thank you for your E response
157	5	R Dorgan	No added comments	Thank you for your E response
158	1	H Andrews	No added comments	Thank you for your E response
158	2	H Andrews	No added comments	Thank you for your E response
158	3	H Andrews	No added comments	Thank you for your E response
158	4	H Andrews	No added comments	Thank you for your E response
158	5	H Andrews	No added comments	Thank you for your E response
159	1	G Sidders	No added comments	Thank you for your E response
159	2	G Sidders	No added comments	Thank you for your E response
159	3	G Sidders	No added comments	Thank you for your E response
159	4	G Sidders	No added comments	Thank you for your E response
159	5	G Sidders	No added comments	Thank you for your E response
160	1	E Cox	No added comments	Thank you for your E response
160	2	E Cox	No added comments	Thank you for your E response
160	3	E Cox	No added comments	Thank you for your E response
160	4	E Cox	No added comments	Thank you for your E response
160	5	E Cox	No added comments	Thank you for your E response
161	1	A Lampard	need to be functioning community	Thank you for your E response - addressed in WVNDP

Consultee ref no.	Question No.	Name of the consultee	Summary of comments - main point raised	WVNDP - Response and changes proposed
161	2	A Lampard	green buffer prevents urban sprawl	Thank you for your E response - addressed in WVNDP
161	3	A Lampard	integration of new dev. Is important	Thank you for your E response - addressed in WVNDP
161	4	A Lampard	safe walkways & crossings	Thank you for your E response - addressed in WVNDP
161	5	A Lampard	funding for community amenities	Thank you for your E response - addressed in WVNDP
162	1	J Knight	No added comments	Thank you for your E response
162	2	J Knight	No added comments	Thank you for your E response
162	3	J Knight	No added comments	Thank you for your E response
162	4	J Knight	No added comments	Thank you for your E response
162	5	J Knight	No added comments	Thank you for your E response
163	1	C Cox	No added comments	Thank you for your E response
163	2	C Cox	No added comments	Thank you for your E response
163	3	C Cox	No added comments	Thank you for your E response
163	4	C Cox	No added comments	Thank you for your E response
163	5	C Cox	No added comments	Thank you for your E response
164	1	S & T Banks	No added comments	Thank you for your E response
164	2	S & T Banks	No added comments	Thank you for your E response
164	3	S & T Banks	No added comments	Thank you for your E response
164	4	S & T Banks	No added comments	Thank you for your E response
164	5	S & T Banks	No added comments	Thank you for your E response
165	1	T & T Griffin	Maintain village identity	Thank you for your E response - addressed in WVNDP
165	2	T & T Griffin	Green Belt essential	Thank you for your E response - addressed in WVNDP
165	3	T & T Griffin	keep character of village	Thank you for your E response - addressed in WVNDP
165	4	T & T Griffin	ped safety and air quality addressed	Thank you for your E response - addressed in WVNDP

Consultee ref no.	Question No.	Name of the consultee	Summary of comments - main point raised	WVNDP - Response and changes proposed
165	5	T & T Griffin	existing play park upgrade needed	Thank you for your E response
166	1	P Brien	maintian village identity & sustainability	Thank you for your E response - addressed in WVNDP
166	2	P Brien	Green Belt v important	Thank you for your E response - addressed in WVNDP
166	3	P Brien	Dev in keeping with village	Thank you for your E response - addressed in WVNDP
166	4	P Brien	crossings, cycle paths, speeding?	Thank you for your E response - addressed in WVNDP
166	5	P Brien	No added comments	Thank you for your E response
167	1	D Light	No added comments	Thank you for your E response
167	2	D Light	No added comments	Thank you for your E response
167	3	D Light	No added comments	Thank you for your E response
167	4	D Light	No added comments	Thank you for your E response
167	5	D Light	No added comments	Thank you for your E response
168	1	R & M Webster	Homes for locals + employment	Thank you for your E response - addressed in WVNDP
168	2	R & M Webster	Wildlife corridors-devs should protect	Thank you for your E response - addressed in WVNDP
168	3	R & M Webster	No added comments	thank you for your e response
168	4	R & M Webster	air quality important	Thank you for your E response - addressed in WVNDP
168	5	R & M Webster	No added comments	Thank you for your e response
169	1	C Lewis	No added comments	Thank you for your e response
169	2	C Lewis	No added comments	Thank you for your e response
169	3	C Lewis	No added comments	Thank you for your e response
169	4	C Lewis	No added comments	Thank you for your e response
169	5	C Lewis	No added comments	Thank you for your e response
170	1	J Monelle	village atmosphere important	thank tyou for your concurring response
170	2	J Monelle	No added comments	thank you for your response
170	3	J Monelle	No added comments	thank you for your response

Consultee ref no.	Question No.	Name of the consultee	Summary of comments - main point raised	WVNDP - Response and changes proposed
170	4	J Monelle	A 37 already at capacity	Thank you for your concurring response
170	5	J Monelle	use existing bldgs 1st. Better bus service	Thank you for your concurring response
171	1	A Thompson	No added comments	thank you for your response
171	2	A Thompson	No added comments	thank you for your response
171	3	A Thompson	No added comments	thank you for your response
171	4	A Thompson	No added comments	thank you for your response
171	5	A Thompson	No added comments	thank you for your response
172	1	N Clark	No added comments	thank you for your response
172	2	N Clark	No added comments	thank you for your response
172	3	N Clark	No added comments	thank you for your response
172	4	N Clark	No added comments	thank you for your response
172	5	N Clark	No added comments	thank you for your response
173		B Worlock	I mention the following to one of your colleagues at last nights meeting, regarding what is being called Green Buffers & I just wondered if these could not be given more importance.	The Neighbourhood Plan is a pro-development document and we cannot use the NP to stop development or apply blanket restrictions to development
173		B Worlock	Neighbourhood Plan issues. For instance, I would guess one Green Buffer could be the Whitchurch land which stretches under the viaduct and beyond and suggest if this 'scruffy' waste area was landscaped to provide a pleasant park.	With regards to the 'scruffy' space under the Saltwell Viaduct, this could be progressed through the Whitchurch Village Council or through a local community group.
173		B Worlock	In Policy WV1.2 you make no reference to any developer having to provide a housing needs survey. I believe this policy should include such a provision and put all the onus on the residential developers when outlining a scheme of 10 dwellings, that they must provide a housing needs survey at their expense to prove the housing is required. In fact, 10 houses is quite high, I do not see why the number should not be reduced to 5 or 6	This is in accordance with the B&NES Housing department and the B&NES Core Strategy

Consultee ref no.	Question No.	Name of the consultee	Summary of comments - main point raised	WVNDP - Response and changes proposed
173		B Worlock	In Policy WV1.3 I see no reason why this percentage could not be increased to at least a third ie. 33.3%. In fact, to a developer it will not matter who they sell it to so one might suggest that you do not even need a percentage as first priority must go to local residents with need, as outlined.	The NP is a pro-development document and we cannot use the Neighbourhood Plan to stop development or apply blanket restrictions to development

Consultee ref no.	Question No.	Name of the consultee	Summary of comments - main point raised	WVNDP - Response and changes proposed
173	5	B Worlock	<p>In Policy WV2.1 whilst I understand what you are trying to achieve here and I do not want to see us joined to Bristol, it might also be prudent to look at another possibility that in certain circumstances and if we have to get to a point where you are faced with having to take houses that you look at it from a historical perspective. Whitchurch historically was built along the turnpike road, now the A37. Another way to ensure a green buffer is to extend your figure 13 map along the road towards Hursley Hill, but not allowing it to widen too much. This way, for instance, housing would still retain its character with a green buffer surrounding it. Density is a real problem and this strategy might just avoid that. This would tie in with your policy WV2.2 & WV2.3</p> <p>In Policy WV4.1 - Air Quality. There is an error in the second paragraph, this should read Developments not 'Developers'</p> <p>In 2.5 you mention the problems of dangerous parking because of the village's higher than average reliance on private cars, yet you have not included any policy that refers to parking at dwellings. I would suggest that you include a policy on parking which might read something like:- Parking - Dwellings</p> <p>All new proposed developments must provide a minimum of:</p> <p>Two spaces per three bed dwelling Four spaces per four bed dwelling One space per dwelling for visitors Garages should not be included when calculating space allocation. Motor cycle and bicycle spaces should also be provided at least one per dwelling For one bedroom flats and dwellings at least one space adjacent or close by in a communal area must be allocated.</p> <p>In section 12.13 you misspell 'Barbarians' as 'Barbicans'</p>	<p>The Neighbourhood Plan is a pro-development document and we cannot use the NP to stop development or apply blanket restrictions to development. Error Corrected This is covered by the B&NES Parking Standards The typing error of Barbicans has been corrected</p>
174	1	L Haines	No added comments	thank you for your response
174	2	L Haines	No added comments	thank you for your response
174	3	L Haines	No added comments	thank you for your response

Consultee ref no.	Question No.	Name of the consultee	Summary of comments - main point raised	WVNDP - Response and changes proposed
174	4	L Haines	No added comments	thank you for your response
174	5	L Haines	No added comments	thank you for your response
175	1	Mr & Mrs Francomb	No added comments	thank you for your response
175	2	Mr & Mrs Francomb	No added comments	thank you for your response
175	3	Mr & Mrs Francomb	No added comments	thank you for your response
175	4	Mr & Mrs Francomb	No added comments	thank you for your response
175	5	Mr & Mrs Francomb	No added comments	thank you for your response
176		Richard Dean	comments noted	Thank you for your detailed response
177		Barton Willmore/Taylor Wimpey. Letter and e mail dated 07.03 2017	The draft Neighbourhood Plan proposes to cover the period 2015-2042. Strategic Plans normally follow a 20 year time horizon (or a minimum of 15 from adoption as per the NPPF, para 157) Broadband (pg 3 text) - needs to be typed out	Comment Noted. The NP will be reviewed every 5 years or earlier and will be in accordance with the most recent B&NES LP Document as referenced in Para Timescale of trhe Local Plan 2015-2042. We will review the wording in this paragraph and make it clearer to the reader that the Plan will be updated every 5 years or more frequently if necessary. Comment accepted. Policy will be updated to reflect these points.
178		Pegasus Group Letter & e mail received 03.03.17	To be in conformity with the adopted Core Strategy the Neighbourhood Plan should therefore be planning for the same period for the purposes of being 'made', however, the Neighbourhood Forum and local community should also be paying regard to the work being undertaken by BANES to produce a new Core Strategy which is being prepared to align with the West of England Joint Spatial Plan (JSP)	Comment noted. The NP will be reviewed every 5 years or earlier and will be in accordance with the most recent B&NES LP Document as referenced in Para Timescale of the Local Plan 2015-1042. We will review the wording in this paragraph and make it clearer to the reader that the Plan will be updated every 5 years or more frequently if necessary.

Consultee ref no.	Question No.	Name of the consultee	Summary of comments - main point raised	WVNDP - Response and changes proposed
178		Pegasus Group Letter & e mail received 03.03.17	The Draft WNP has a plan period on the front cover of 2015-2042, some 27 years, while paragraph 3.6 of the document states that the plan period is 23 years. Neither of these periods conform to either the adopted Core Strategy, which has a 15 year plan period (2014-2029) or the plan period being proposed by the JSP and the revised BANES CS which has a plan period of 20 years (2016-2036)	Error noted and amended
178		Pegasus Group Letter & e mail received 03.03.17	Paragraphs 3.1 to 3.4 (Quantum of development	The Draft Whitchurch Village Neighbourhood Development Plan must be in general conformity with the adopted B&NES CS. The approach to the quantum of development in the Neighbourhood Plan is in line with Policy RA5 & Policy RA1. Policy RA5 & RA1 is a strategic policy and has been tested against the 2004 regulations during the B&NES CS hearings in March 2013. It is not the role of a Neighbourhood Plan to test alternatives to a strategic policy.
178		Pegasus Group Letter & e mail received 03.03.17	Para 4.0 to Para 4.5 (JSP and emerging BANES CS (2016-2036)	Comment noted. The NP has been developed in accordance with the most recently adopted B&NES Local Plan Policy and we make reference to the emerging JSP. We will update the NP once the JSP has been adopted by the 4 Local Planning Authorities.
178		Pegasus Group Letter & e mail received 03.03.17	In response to Policy WV1.1 Village Design it is noted that the Whitchurch Village Character Assessment Document (2015) is not immediately available to comment on as part of this public consultaton and no web link is provided on the Neighbourhood Plan website to the document in the word document comprising the evidence base list.12	There was an uploading error on the WVNDP webiste which was amended immediately and then available to everyone.

Consultee ref no.	Question No.	Name of the consultee	Summary of comments - main point raised	WVNDP - Response and changes proposed
178		Pegasus Group Letter & e mail received 03.03.17	In response to Policy WV1.2 Provide a mix of housing types housing mix should be provided in accordance with advice and guidance in the SHMA published to support the adopted BANES CS (2014) - or any updated SHMA published to support the JSP or emerging BANES Local Plan 2016-2036. No mention is made in this policy of housing for downsizers or for the elderly who may wish to stay in the village. In order to respond to Policy WV 1.3 Allocation of Affordable Housing clarity was sought from the Parish Council with regard to the interpretation of the policy as the adopted BANES CS includes Policy CP9 Affordable Housing which requires 'major' residential development delivering 10 or more dwellings in Whitchurch to provide 30% affordable housing, with sites of 5-9 dwellings making a 15% on site contribution or commuted sum payment	Comments noted. We have updated Policy WV.1.2 and WV 1.3 to reflect the comments of the B&NES housing officers.
178		Pegasus Group Letter & e mail received 03.03.17	In response to Policy WV 1.4 Heritage Assets & Their Setting it is suggested that part of the policy is missing as the list of heritage sites alluded to by the policy is not included	Error has been corrected
178		Pegasus Group Letter & e mail received 03.03.17	In response to Policy WV 106 Broadband Policy Provision it is submitted that the policy needs to be NPPF paragraph 43 compliant and that the plan may be better future proofed by not stating a 'symmetrical speed of 25 Mbps' but instead refer to a recognized industry standard that would allow for standards to be automatically updated or rolled forward over time.	Comment noted. Policy wording altered from "where feasible" to "where available"

Consultee ref no.	Question No.	Name of the consultee	Summary of comments - main point raised	WVNDP - Response and changes proposed
178		Pegasus Group Letter & e mail received 03.03.17	The Village boundary as proposed by WNP does not comply with the extent of the Green Belt Boundary on the adopted BANES CS Proposals Map 19 which removes more sites to the north east of RA5 from the Green Belt over and above the quantum of land shown to comprise RA5 in the WNP. The WNP has only identified sites for development that were either allocated through the adopted BANES CS or already consented when the BANES CS adopted. It is submitted therefore that the WNP is not proactive about identifying sites to 'boost significantly' the supply of housing in accordance with paragraph 47 of the NPPF as it merely replicates housing growth already identified in the adopted local plan	The Draft Whitchurch Village Neighbourhood Development Plan must be in general conformity with the adopted B&NES CS. The approach to the quantum of development in the Neighbourhood Plan is in line with Policy RA5 & Policy RA1. Policy RA5 & RA1 is a strategic policy and has been tested against the 2004 regulations during the B&NES CS hearings in March 2013. It is not the role of Neighbourhood Plan to test alternatives to a Strategic Policy.
178		Pegasus Group Letter & e mail received 03.03.17	It is submitted that Policy WV2.1 Positive green buffer management between Whitchurch Village and Bristol is not worded positively, the comments previously raised at paragraph 5.4. 13 of Objective 1 comments are relevant. The Policy begins 'Development will not be permitted outside the housing development boundary....' this should be amended to become positive policy wording in accordance with NPPF and to meet the basic conditions test.	Residential development in RA1 & RA5 villages should be either through infill development or on sites currently identified in the adopted B&NES CS or the emerging Placemaking Plan. Only rural exceptions sites will be permitted outside Housing Development Boundary. This approach is in line with strategic policy RA1 & RA5.
178		Pegasus Group Letter & e mail received 03.03.17	With regard to Policy WV4.1 Air Quality, it is noted that developers are required to submit an Air Quality Assessment to BANES for a major planning application as identified on the BANES local validation checklist for planning applications. 21 The first part of this policy therefore does not add anything to the existing planning practice for major applications within the BANES administrative area. The second paragraph of the policy is also worded negatively and comments raised at paragraph 5.4 13 of Objective 1 on wording to meet the basic conditions test are again relevant.	Comments noted. We have updated Policy WV.1.2 and WV 1.3 to reflect the comments of the B&NES Environmental Monitoring Team.

Consultee ref no.	Question No.	Name of the consultee	Summary of comments - main point raised	WVNDP - Response and changes proposed
178		Pegasus Group Letter & e mail received 03.03.17	Objective 1 comments - Para 5.4.13 It is noted that both policy WV1.2 and WV1.4 include negative phrases. It is submitted that these polices do no satisfy the basic conditions test owing to their negative wording.	Comments noted - policy wording considered appropriate.
178		Pegasus Group Letter & e mail received 03.03.17	Objective 2 comments - Para 3.7 It is submitted therefore that the following wording be inserted into each of the Green Belt policies of the draft WNP in order to ensure the longevity of the WNP and to future proof it so that it does not beome immediately outdated by the adoption of the JSP and the BANES CS review 'This policy will not apply to any sites which have been allocated under the strategic policies of an adopted local plan'	Comments noted - this is not considered to be necessary as the later adopted Plan will supersede the Neighbourhood Plan, which will then be reviewed accordingly.
179		JBP Associates	Letter received 07.03.17	Thank you for your response
180		Savills Letter & e mail received 07.03.17	We would encourage reference to the Core Strategy Review is included at paragraph 1.3 of the NDP	References to the need to review the Neighbourhood Plan in the context of the JSP are considered sufficient.

Consultee ref no.	Question No.	Name of the consultee	Summary of comments - main point raised	WVNDP - Response and changes proposed
180		Savills Letter & e mail received 07.03.17	<p>Development Plan</p> <p>The draft NDP explains at paragraphs 1. 2-1.3 the relationship between the emerging NDP and the adopted and emerging development plan documents for Banes.</p> <p>Paragraph 1.2 indicates that the NDP will replace policies in the Banes Development Plan; whilst recognising that this may be an error due to paraphrasing, the relationship between the NDP and wider development plan documents should be clear.</p> <p>It must then be made clear that any future development plans which may conflict with the made NDP policies, would replace NDP policies where there was any conflict in accordance with paragraph 38(5) of the Planning and Compulsory Purchase Act 2004; which confirms that the latest development plan document to be adopted, approved or published takes precedence.</p>	Comment noted and agreed. Additional paragraph will be added to the main report.
180		Savills Letter & e mail received 07.03.17	<p>Village</p> <p>It is not immediately evident what the NDP actually means by the term 'village'. Paras 7.13-7.14 require review in light of this. As currently drafted these paras imply that that NDP is seeking to influence the emerging strategic policies/ is contrary to the basic conditions</p>	Comment noted. The NP has been developed in accordance with the most recently adopted B&NES Local Plan Policy and we make reference to the emerging JSP. We will update the NP once the JSP has been adopted by the 4 Local Planning Authorities.
180		Savills Letter & e mail received 07.03.17	<p>WV1.2</p> <p>This policy would benefit from additional text to set out further details in respect to the second element of the policy to set out what the NDP means by large scale uniform type and size.</p>	We consider this should be determined on an individual scheme basis wthin the context of the village.

Consultee ref no.	Question No.	Name of the consultee	Summary of comments - main point raised	WVNDP - Response and changes proposed
180		Savills Letter & e mail received 07.03.17	The Policy as drafted is missing the list of non-designated heritage assets. The final element of the policy does not accord with national policy, and as such would fail to meet the basic conditions. We refer to the NPPF which at Section 12 sets out the approach to heritage assets. Identifying the requirement for proportionate protection policies depending on the significance of any asset, and the resultant tests for considering the acceptability of development proposals on heritage assets. Figure 14 is not relevant to the policy as currently drafted, and should be excluded	Error noted and amended
180		Savills Letter & e mail received 07.03.17	WV1.5 The policy replicates emerging policy in the Placemaking Plan and is therefore not necessary within the NDP.	Comment noted - Policy WV1.5 wording differs to the Placemaking Plan approach.
180		Savills Letter & e mail received 07.03.17	Policy WV1.6 - Broadband Provision Policy. This policy is supported but must be caveated with 'where feasible' to reflect where connection may not be possible. However, a Connectivity Statement would not be required, as, if it is feasible, a planning condition can be included to ensure connections are provided.	Comment noted and wording altered from "where feasible" to "where available"
180		Savills Letter & e mail received 07.03.17	Community Facilities We are concerned that the 'equine centre and Horseworld' are identified as community facilities in the NDP; this should be removed. These are operational facilities of the charity on a day to day basis with only occasional public access. There is no evidence provided to support their classification as community facilities.	The Neighbourhood Plan is not seeking to designate this as an 'Asset of Community Value'

Consultee ref no.	Question No.	Name of the consultee	Summary of comments - main point raised	WVNDP - Response and changes proposed
180		Savills Letter & e mail received 07.03.17	Policy WV2.1 : Positive Green Buffer Management. The extent of the 'Green Buffer' is not clearly defined within the NDP. The draft policy is seeking to influence the emerging strategic planning context by restricting the locations which may be considered. No evidence is provided to justify the blanket identification of a Green Buffer.	Comment noted. The NP has been developed in accordance with the most recently adopted B&NES Local Plan Policy and we make reference to the emerging JSP. We will update the NP once the JSP has been adopted by the 4 Local Planning Authorities.
180		Savills Letter & e mail received 07.03.17	WV2.3 Is not clear what the intention of this policy is, or how it would work in practice.... Clarification required	Comments noted - visual impact of a proposed scheme must be assessed and minimised.
180		Savills Letter & e mail received 07.03.17	WV2.4 The NDP should include a reference to the source of Figure 14. Policy must be amended to ensure compliance with the basic conditions	Policy wording considered to meet basic conditions test.
180		Savills Letter & e mail received 07.03.17	Paragraph 10.6 is contrary to the basic conditions; and seeks to undermine the presumption in favour of sustainable development, and restrict development needs	Comment noted. We want to ensure that the impacts of Core Strategy Policy RA5 development on the village are understood.
180		Savills Letter & e mail received 07.03.17	Objective 4 This section of the NDP appears to be based upon a report which is not published as part of the evidence base	Comment noted - evidence will be published as part of Reg 16 consultation.
180		Savills Letter & e mail received 07.03.17	WV4.1 There is a detailed Air Quality policy (PCS3) in the emerging Placemaking Plan; and as such it is not clear why the NDP needs to address this further	Comment noted. Policy will be updated to reflect these points
180		Savills Letter & e mail received 07.03.17	WV4.2 Traffic and Safety The policy sets a higher threshold in respect to development proposals impacts on traffic i.e. goes further than NPPF	Comment noted - policy requires application accompanied by assessment of impacts.
		Richard Dean letter dated 04.03.17	Policy WV.1.2 Developer to produce housing needs survey	Noted.
		R.Dean 04.03.17	Policy WV1.5 Retention of businesses	Comment noted

Consultee ref no.	Question No.	Name of the consultee	Summary of comments - main point raised	WVNDP - Response and changes proposed
		R Dean 04.03.17	Policy WV.2.1. Housing sites	Comment noted
		R.Dean 04.03.17	Policy WV 4.1 Developments should read Developers	Error corrected
		R.Dean 04.03.17	Policy WV4.2 Developers to fund traffic assessment on future plans	Comment noted
		R.Dean 04.03.17	Further comments regarding the School, new shop etc	Comments noted but N/A to NP.
		R.Dean 04.03.17	Show just one traffic picture in Norton Lane	Comment noted
		R.Dean 04.03.17	Retail Shop?	Comment noted
		R.Dean 04.03.17	8.8 Section on local business consultation	Comment noted
		R.Dean 04.03.17	Section 12.13 Barbicans should read Barbarians	Error corrected
		R.Dean 04.03.17	Comment from associate in Temple Cloud	N/A to NP. Thank you for your detailed Response

B&NES Response to the Whitchurch Village Draft Plan (January 2017)

Whitchurch Village Neighbourhood Plan: Local Planning Authority comments for the Whitchurch Village Neighbourhood Development Plan Steering Group for the Regulation 14 consultation.

The local planning authority (LPA) has provided comments (as set out below) to the qualifying body on the Reg 14 Draft Neighbourhood Development Plan to assist the Steering Group in preparing the Draft NDP.

The strategic policies in the development plan currently in force are those set out in the B&NES Core Strategy, Saved Local Plan Policies and the emerging Draft Placemaking Plan.

The LPA recognises that the Whitchurch Village NDP has been prepared by a team of volunteers who have sought to achieve the range of objectives of those living and working in the neighbourhood area who have expressed an interest in the plan's preparation through the range of locally convened consultation events. The comments provided by the LPA have sought to assist Whitchurch Village in meeting those ambitions, to take them forward in a manner such that they are in the best position to achieve the vision and objectives on which the Whitchurch Village NDP is based and to ensure alignment with B&NES initiatives/policy.

Page no.	B&NES Dept.	Draft Whitchurch Village Plan section / reference (NB these refs may have changed in later draft)	LPA comments during plan preparation (only policies that have been retained in the submitted NDP are referred to below).	Reason for comments
23	Housing (Enabling)	Para 8.3	Whilst affordable housing need from the village/local surveys should be addressed as a priority – on large sites it will be District-wide need that will mostly influence delivery. The Plan needs to acknowledge this	Acknowledge wider context.

**Bath & North East
Somerset Council**

			District-wide need. Allocation of affordable housing policies will deal with local connection issues.	
23	Housing (Enabling)	Policy WV1.3 (Allocation of Affordable Housing)	Policy will need to be amended to refer to whatever the prevailing Local Plan/JSP policy says will drive the level of affordable housing required (rather than solely local demonstrable need).	Ensure policy WV1.3 reflects strategic policy context now & in the future.
23	Housing (Enabling)	Policy WV1.3 (Allocation of Affordable Housing)	Principle of strong local connection to parish is agreed, but wording should reflect local Homesearch policy.	Alignment of WVNDP with B&NES (Homesearch) affordable housing allocation policy.
23	Housing (Enabling)	Policy WV1.3 (Allocation of Affordable Housing)	In addition to reference to shared ownership other low cost affordable home ownership products are being used. The policy should reflect this e.g. by deleting the word 'shared'.	Acknowledgement of all relevant affordable housing products.

Proposed editorial corrections in the Draft Whitchurch Village Neighbourhood Plan (24th January-7th March 2017)

Page	Editorial corrects	Reason for change
1	Add 'DEVELOPMENT' before 'PLAN'	Heading correction
2	Add 'as' after 'community' (penultimate paragraph)	Grammar
3	After 'locals' delete the 's' then add 'people' (1 st paragraph in 'thank yous')	Grammar
3	Add 'd' after 'continue' then add 'to' after 'group' (2 nd paragraph)	Grammar
3	Delete and before 'widen' then add 'has widened' after 'engagement' (steering group)	Grammar
5 1.3	After 'revised' add 'or sooner if'	Clarification
5	Two pictures moved to Page 17	Moved pictures to relevant place
9 3.6	23 changed to 27	Error clarified
10	Add 'VILLAGE' after 'WHITCHURCH' (NOW PAGE 9)	Correction of name
10 3.2	Small 't' for 'the village' (NOW PAGE 9)	Grammar
10 3.3	Add 'the' to 'way of working' (near end) (NOW PAGE 9)	Grammar
23 7.3	Add 'until' after 'needs' (4 th line)	grammar
24 7.8	Add 'Village' after 'Whitchurch'	Correction of name
25 7.11	Add 'in' after 'resulting' (last line)	Grammar
25 7.12	Delete 'been' add 'being' (last line)	Grammar
26 7.14	Insert 'VILLAGE' after 'WHITCHURCH'	Correction of name
26 7.14	Added Photo of steering group with Jacob Rees Mogg and added figure description	Added photo
28 8.2	25 changed to 27	Error clarified
30 wv.1.3	Policy wording changed	Wording changed in accordance with the Housing Department, B&NES. The altered wording has not changed the purpose of the Policy
30	Policy wv1.2 delete the word 'on' before 'schemes'	Grammar

31 wv.1.4	Heading altered 'Their' to 'their'	Grammar and format
31 W.V. 1.4	Remove 'besides' to 'importance'. Remove 'and' to 'not listed' Remove 'that make a contribution to the character of the area'	Clarification
33 8.7	Add after 'low' 'numbers of'	Adjective missing
33 8.8	Delete 'a' after 'therefore'	Grammar
36 12.2	Add 'Village' after 'Whitchurch'	Correction of name
39 13.4	Add between 'safe' and 'routes', 'pedestrian and cycling'	Better explanation
42 wv.4.1	'W.V.1.2' and 'W.V. 1.3' changed to W.V.4.1	Correction of data
42 W.V 4.1	'management' changed to 'assessment'	Correction of data
42 14.6	Wording changed in accordance with comments from the Environmental Protection, B&NES	Minor change to supporting text & minor changes to policy wording
42	Delete 'developers' insert 'developments'	Correction of noun
43 W.V. 4.2	Add 'severe' before 'effects' and after 'have'	Change made in accordance with NPPF
43	Policy 4.4 after 'detours' add 'that make road crossings dangerous'	grammar
46	Add 'public' before 'green space'	Explanation
47 15.14	Full stop after 'A37' then add 'Parent parking at times creates long queues at peak times	Explanation
	And school arrival/departure causing disruption'	Explanation
47 15.13	'Barbicans' changed to 'Barbarians'	Correction of name