

**Bath and North East Somerset Council
Somerset County Council**

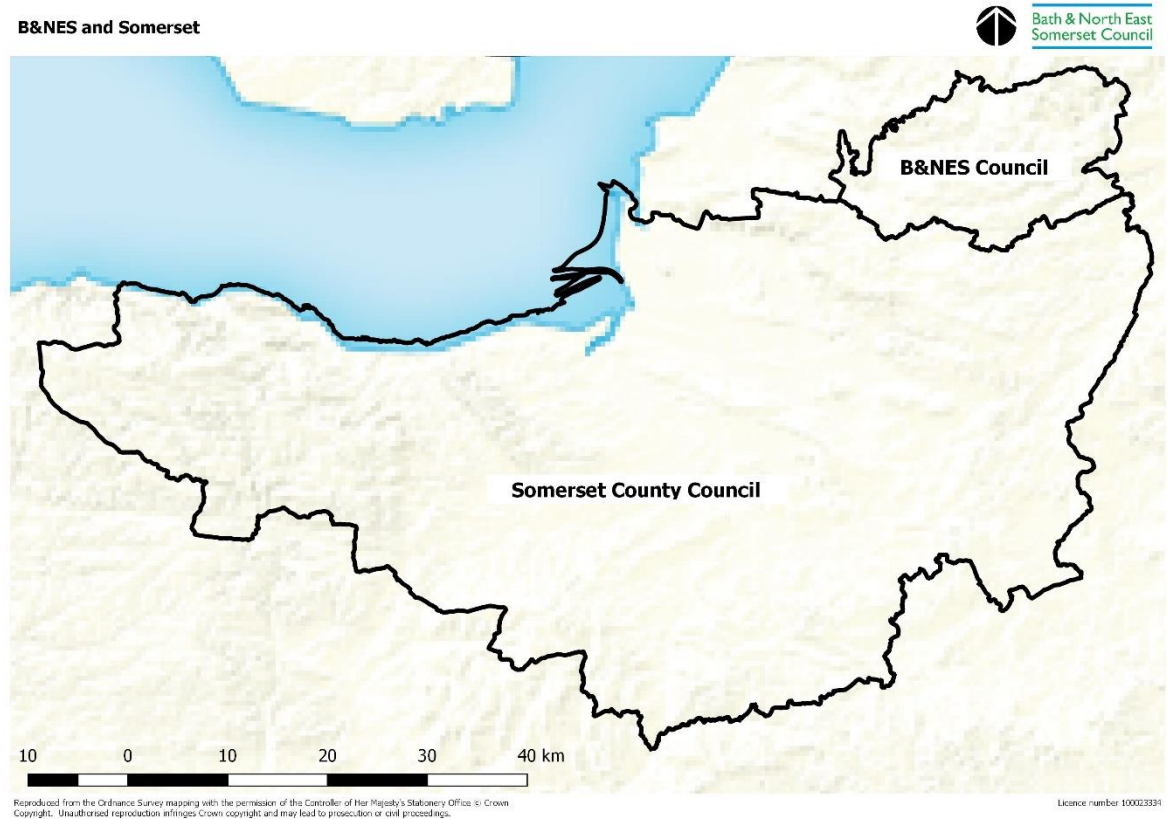
Bath and North East Somerset Local Plan Partial Update (Regulation 19 Draft Plan)

Statement of Common Ground

August 2021

1. Introduction and Context

- 1.1 This statement of common ground is entered into between Bath & North East Somerset Council and Somerset County Council in their role as Local Highway Authority regarding the Bath and North East Somerset (B&NES) Council Local Plan Partial Update (LPPU). It includes details of liaison between the Local Authorities on highway matters as relates to the LPPU that cross the boundary between the authorities as shown on the map below.



- 1.2 In order to address a range of urgent issues in Bath and North East Somerset, including the climate and ecological emergency, B&NES Council is preparing a partial update of the Core Strategy and Placemaking Plan (which together comprise the Local Plan). As this is a partial update to the existing Plan, and not a new Plan, the scope of the changes are confined to those areas that can be addressed without significantly changing the strategic policy framework of the adopted Plan and include: updating policies in order that they better address the climate and ecological emergencies, replenishing housing supply and addressing a limited range of other urgent local issues.
- 1.3 A full review of the B&NES Local Plan will be undertaken (B&NES New Local Plan) alongside the West of England Combined Authority (WECA) Spatial Development Strategy (SDS) and this will need to take appropriate account of the strategic planning issues facing the wider Bristol sub-region. This will include the need to plan for additional homes, jobs, green and other infrastructure above and beyond the Partial Update and liaison will be undertaken and continue with Somerset County Council on these matters.

2. Governance Arrangements

- 2.1 Cooperation in relation to strategic policy-making takes place through transport officers liaison and meetings. Details of liaison in respect of the B&NES LPPU and senior officers are set out below.

Local Authority	Name (lead contact)	Role
Somerset County Council	Mike O'Dowd-Jones	Strategic Commissioning Manager – Highways and Transport
Bath & North East Somerset Council	Claire Cornelius	Transport and Developments Manager

- 2.2 Record of main engagement activity

Last updated: 23 August 2021

Date	Activity log	Participation
11.2.21	Email of engagement regarding B&NES Local Plan Partial Update	George Edwards B&NES, MOD
28.4.21	B&NES Council and Somerset County Council Transport Officers Meeting to discuss transport evidence with Somerset County Council.	GE, Chris Carter AECOM, MOD
23.8.21	Consultation/liason on Draft SoCG with Somerset County Council Transport officers	GE, MOD

3. Strategic Transport Matters

- 3.6 Proposed transport policy amendments within the B&NES LPPU reflect the Council's Climate and Ecological Emergencies and the ambition to achieve carbon neutrality by 2030. B&NES Council declared three priorities to achieve carbon neutrality, including 'a major shift to mass transit, walking and cycling to reduce transport emissions.' Proposed policy amendments focus on sustainable travel, providing genuine travel choice and reducing car dependence, all supporting a reduction in carbon emissions. There is also an increased recognition of the importance of location and design in the sustainability of development.
- 3.7 B&NES Council and Somerset County Council transport officers met to discuss the transport technical evidence base to the LPPU including how B&NES is supporting growth in sustainable travel demand. Officers also updated that B&NES Council are drafting transport related SPDs in support of proposed amendments to transport policy within the LPPU.
- 3.8 It has been agreed by all parties that there is no severe cumulative impact that arises from the B&NES Local Plan Partial Update.

4. Statement Review and Update

- 4.1 This Statement of Common Ground (SoCG) is an iterative document, drafted at this stage for the purposes of the B&NES Local Plan Partial Update. Engagement and discussions will also inform the preparation of the Councils' respective Local Plans. This engagement will be recorded in future iterations of the SoCG. While at this time there are no specific issues that cannot be agreed identified from the Partial Update, it will be important that discussion of cross boundary issues continue under the Duty to Cooperate and inform further development of the local authorities development plans.
- 4.2 A separate SoCG has been developed with Mendip District Council following liaison between the authorities' planning officers on environmental, economic and housing matters.
- 4.3 In the event that there are any changes in circumstances from those outlined in this SoCG, then these will be brought to the attention of relevant officers and Members and any amendments will be agreed accordingly.

5. Signatories

- 5.1 This version of the statement of common ground is agreed on 24.8.2021 by Bath and North East Somerset Council and Somerset County Council.

Signed  _____

Claire Cornelius, Highways Development Control and Transport Policy Manager

On behalf of Bath and North East Somerset Council

Signed  _____

Andrew Wiles, Technical Lead: Transport Policy

On behalf of Somerset County Council