

A Primary School for your Child

in Bath & North East Somerset
2023/2024



Family Information

Live Well B&NES is a web-based resource offering a wide range of information, signposting and resources for families and parents carers of children with additional needs.

Live Well B&NES Children & Families – parenting support and information, including Ofsted registered childcare and family activities

Live Well B&NES SEND Local Offer (Rainbow Resource) – information, signposting and support for families with a child (from birth – 25 years old) with special educational needs and/or a disability

Find out more:

<https://livewell.bathnes.gov.uk>

Follow us:

www.facebook.com/livewellbathnes

www.instagram.com/Youth Info Bathnes

Live well
Bath & North East Somerset
Information, support and signposting

 Live Well B&NES

 Youth Info B&NES



Explore our community directories livewell.bathnes.gov.uk

| | |
|---|---|
|  | Family information, including Ofsted registered childcare |
|  | Supporting adults to live independent lives |
|  | Supporting children and young people aged 0-25 with additional needs (Rainbow Resource: our SEND Local Offer) |

Register your organisation, group or service, for free, on Live Well B&NES

Special Educational
Needs and Disability
Information, Advice
and Support.

send ias bathnes

Parents/Carers – do you have concerns about your child’s education?

Can we help you to work with schools to help your child?

Sendias Bathnes (the new name for the SEND Partnership Service) offers confidential, impartial information, advice and support to children and young people (up to 25 years) with SEND and their parent carers.

Your child does not need an assessment or diagnosis of need, or an EHC plan for you to speak to one of our trained advisers.

For further information about how Sendias Bathnes can help your child, or to become a volunteer with the Service, please contact:

Sendias Bathnes Advice line: 01225 394382

Text: 07530 263401

Email: sendias@bathnes.gov.uk

Website: www.sendiasbathnes.org.uk

Dear Parent

This booklet is designed to give you information about the schools in your area and how you should apply for a school place. Starting school is a big step for both children and parents and for this reason we want to make the whole process of locating and applying for a primary school as simple as possible.

You are advised to contact the schools you would prefer your child to attend. They will give you a lot more advice and information.

The Local Authority works in partnership with schools and parents to provide high quality education for children. Parents are encouraged to play an active role in what is one of the most formative parts of children's lives.

I hope that you will find this booklet useful in finding a suitable school for your child and that together we can give our children the best possible start to education.

Yours sincerely

Christopher Wilford

Director of Education
August 2022

Content

| | | |
|---------------------------|--|----|
| | Introduction | 4 |
| | Deciding on a school preference | 6 |
| | Some Useful Names and Addresses | 7 |
| | Map | 8 |
| | Apply online | 10 |
| | Do's & Don'ts of applying for a school place & an explanation of equal preferences | 11 |
| | Useful dates for your diary | 14 |
| Section 1 | Explanation of terms used in this booklet | 16 |
| Section 2 | How do I know which school will suit my child? | 20 |
| Appendix 1 | Details of previous admissions to schools | 22 |
| Section 3 | At what age do children start school? | 26 |
| Section 4 | How do I apply for a school place? | 28 |
| Section 5 | What else do I need to consider in completing my application? | 31 |
| Section 6 | Travel assistance to school – What you need to know | 35 |
| Section 7 | What happens to my application? | 38 |
| Section 8 | I've been offered a school place, what next? | 40 |
| Section 9 | In-Year admissions | 43 |
| Section 10 | Admissions Criteria for Primary Schools | 46 |
| Appendix 2 | List of Primary Schools and Admissions Levels for the 2023/2024 Academic Year | 74 |
| Appendix 3 & 4 | List of Mainstream Schools with a Resource Base and Special Schools for Primary Age Children Academic Year 2023/2024 | 84 |

About the information in this booklet

The information contained throughout this booklet refers to policies for Bath & North East Somerset LA only. This document can be made available in a range of Languages, Large Print, on tape, electronic and accessible formats. Please contact the Admissions & Transport Section on telephone number 01225 394312 for further information.

Deciding on a school preference for my child

What do I need to do to apply for a school place for my child?

1. Decide which schools you would like to consider making an application for your child to attend.
2. Read the information about those schools in this booklet. You may also want to read other information about those schools from their Ofsted reports etc. You can read this information online at the Ofsted website www.ofsted.gov.uk or the school may be able to give you a summary of the report.
3. Visit the schools you prefer and ask any questions about things you may wish to know.
4. Check the admissions criteria in the booklet for each school you prefer. You need to check to see if you are likely to gain a place. This is very important as some schools decide their own admissions criteria.
5. When you have all the information you want, decide the order in which to place the schools you prefer. Please consider your preferences carefully as after the closing date any changes made will be dealt with as a late application and your original application will be withdrawn. Your child would then not be considered for a school place in the first round of allocations made in April. You do not have to express a preference for more than one school, but you are recommended to do so as this will increase your chances of being offered a place at one of the schools you prefer. Stating up to three preferences will in no way reduce the chance of being offered your 1st preference school.
6. Make your application and submit it by the closing date.

This information is given in far more detail in the booklet. Please take time to read it as it will help you to make your application.

The information contained throughout this booklet refers to policies for

Bath & North East Somerset LA only.

Every effort has been made to ensure the accuracy of the information in this booklet. Some details may have changed since publication.

[Back to Contents Page](#)

Some Useful Names & Addresses

Bath & North East Somerset Council Children's Services Department

- **Christopher Wilford**
Director of Education

Email: Christopher_wilford@bathnes.gov.uk

- **Admissions & Transport**

Tel: 01225 394312

Email: admissions_transport@bathnes.gov.uk

- **Sendias Bathnes**

Tel: 01225 394382

Text: 07530 263401

- **Attendance & Welfare Support Service**

Tel: 01225 394241

- **Children's Services Finance Section**

Tel: 01225 394317

- **Education Psychology Service**

Tel: 01225 394901

- **Special Educational Needs Section**

Tel: 01225 394306

The above can be contacted by post at:

Bath & North East Somerset Council,

Lewis House,

Manvers Street

Bath

BA1 1JG

- **Bristol School Admissions**

Tel: 0117 9037694

Email: [Via Online Contact Form](#)

- **North Somerset School Admissions Team**

Tel: 01275 884078

Email: admissions@n-somerset.gov.uk

- **Somerset Direct**

Tel: 0300 1232224

Email: schooladmissions@somerset.gov.uk

- **South Gloucestershire**

Children & Young People Information Service

Tel: 01454 868008

Email: admissionsandtransport@southglos.gov.uk

- **Wiltshire School Admissions**

Tel: 01225 713010

Email: admissions@wiltshire.gov.uk

- **Black Families Education Support Group**

South Vaults,

Green Park Station,

Bath, BA1 1JB

Tel: 01225 787924

Email: manager@educationequals.org.uk

- **Department for Education**

Piccadilly Gate,

Store Street,

Manchester, M1 2WD

Tel: 0370 000 2288

- **Mr Michael King,
Local Government & Social Care
Ombudsman**

53-55 Butts Road,

Coventry, CV1 3BH

Tel: 0300 061 0614

- **Director of Education, (Church of
England)**

Diocese of Bath & Wells,

Diocesan Education Office,

The Old Deanery,

Wells

BA5 2UG

Tel: 01749 670777

- **Education Director / Advisor (Catholic)**

Diocese of Clifton Schools Commission

Alexander House,

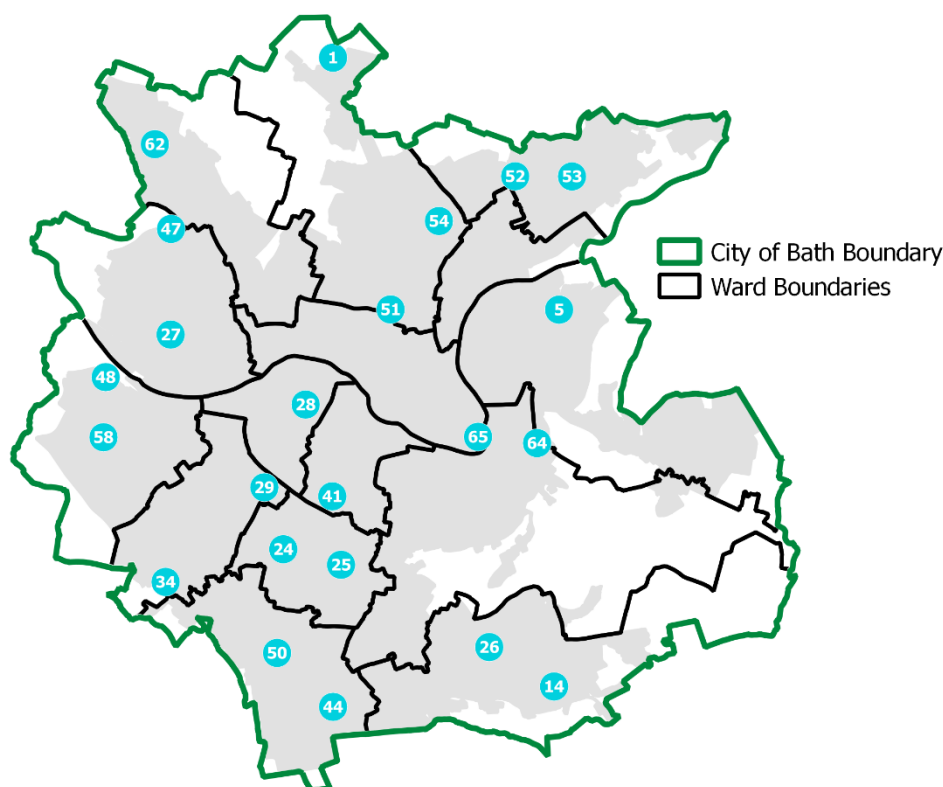
160 Pennywell Road,

Bristol BS5 0TX

Tel: 0117 902 5599

If you have any difficulty in understanding any aspect of this booklet, please telephone the Admissions & Transport Team on 01225 394312 who will do their best to help.

[Back to Contents Page](#)

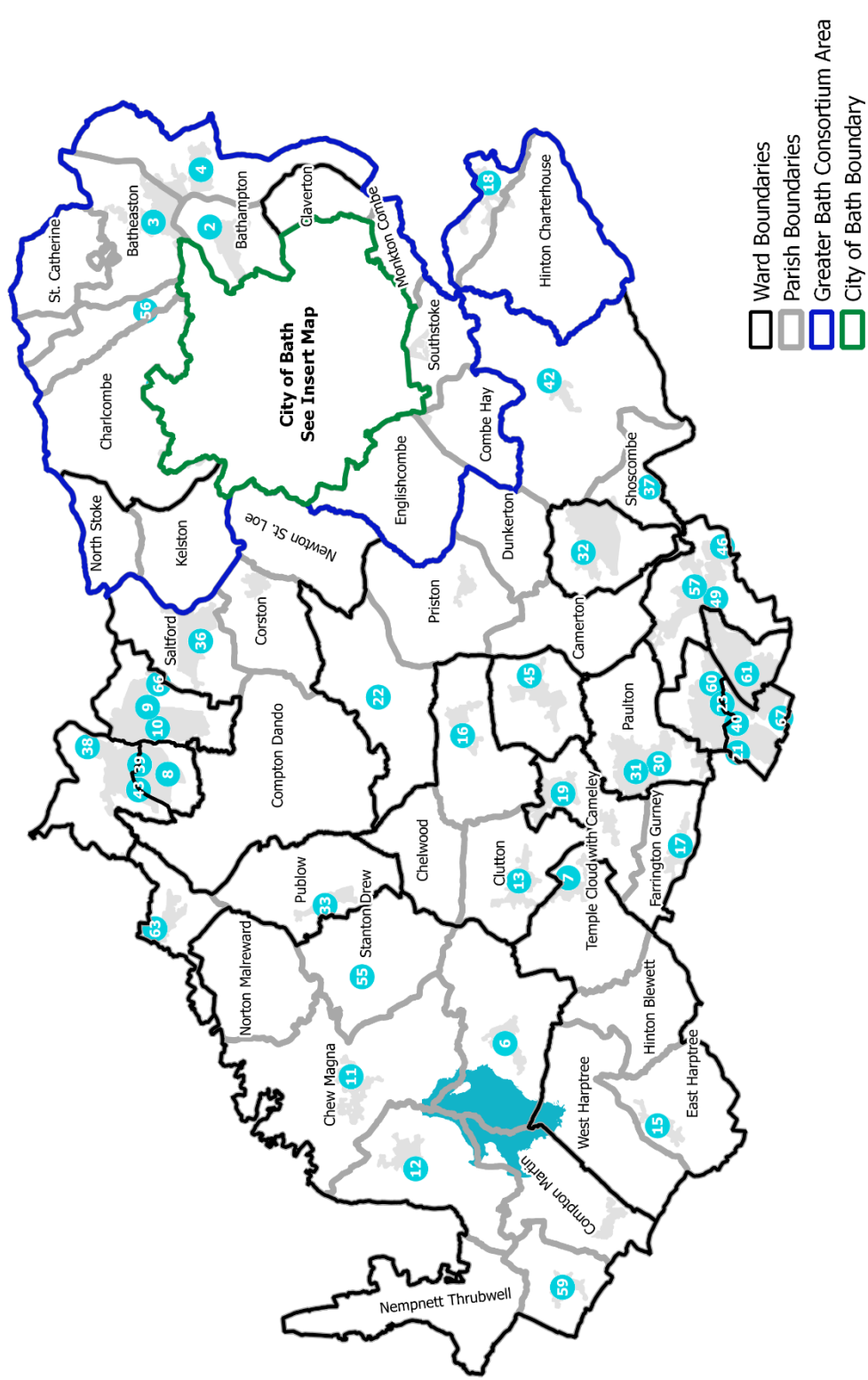


City of Bath

- 1 Abbot Alphege Academy
- 5 Bathwick St Mary Church School
- 14 Combe Down C of E Primary
- 24 Moorlands Infant
- 25 Moorlands Junior
- 26 Mulberry Park Educate Together Primary
- 27 Newbridge Primary
- 28 Oldfield Park Infant
- 29 Oldfield Park Junior
- 34 Roundhill Primary
- 41 St John's Catholic Primary
- 44 St Martins Garden Primary
- 47 St Mary's Catholic Primary
- 48 St Michael's Junior Church School
- 50 St Philips C of E Primary
- 51 St. Andrew's Church School
- 52 St. Saviour's Infant Church School
- 53 St. Saviour's Junior Church School
- 54 St. Stephen's Primary Church School
- 58 Twerton Infant
- 62 Weston All Saints C of E Primary
- 64 Widcombe C of E Junior
- 65 Widcombe Infant

North East Somerset

- 2 Bathampton Primary
- 3 Batheaston Church School
- 4 Bathford Church School
- 6 Bishop Sutton Primary
- 7 Cameley C of E Primary
- 8 Castle Primary
- 9 Chandag Infant
- 10 Chandag Junior
- 11 Chew Magna Primary
- 12 Chew Stoke Church School
- 13 Clutton Primary
- 15 East Harptree C of E Primary
- 16 Farmborough Church Primary
- 17 Farrington Gurney C of E Primary
- 18 Freshford C of E Primary
- 19 High Littleton Church of England Primary
- 21 Longvernal Primary
- 22 Marksbury C of E Primary
- 23 Midsomer Norton Primary
- 30 Paulton Infant
- 31 Paulton Junior
- 32 Peasedown St John Primary
- 33 Pensford Primary
- 36 Saltford C of E Primary
- 37 Shoscombe Church School
- 38 Somerdale Educate Together Primary
- 39 St Johns C of E Primary (Keynsham)
- 40 St John's C of E Primary (Midsomer Norton)
- 42 St Julian's Church School
- 43 St Keyna Primary
- 45 St Mary's C of E Primary (Timsbury)
- 46 St Mary's C of E Primary (Writhlington)
- 49 St Nicholas' C of E Primary
- 55 Stanton Drew Primary
- 56 Swainswick C of E Primary
- 57 Trinity Church School
- 59 Ubley C of E Primary
- 60 Welton Primary
- 61 Westfield Primary
- 63 Whitchurch Primary
- 66 Two Rivers C of E Primary School
- 67 Norton Hill Primary School



BE ON TIME APPLY ONLINE

From 12 September 2022 you can apply online for: -

- A Reception place in an Infant or Primary school for September 2023
- A Y3 place in a Junior school for September 2023

If you are a resident of Bath and North East Somerset and wish to apply for a reception place or a year 3 place in a Junior School within this authority or any other authority, you can do so by applying online as follows.

Visit the following web site to make your application online

[Admissions to Schools](#)

The closing date for Reception & Y3 applications is: -

- **15 January 2023**

Why apply online?

Some benefits of applying online are: -

- It's quick and easy to use
- You can apply from home 24 hours a day, seven days a week
- There is no risk that your application will be lost in the post
- You will receive email confirmation that your application has been received
- You can change your application up to the published closing date
- You can log into the online system (with your password) on the published offer date to view the result of your application and you can accept your place online

For further information contact Admissions & Transport

on 01225 394312 or email admissions_transport@bathnes.gov.uk

Admissions & Transport, Lewis House, Manvers Street, Bath BA1 1JG

Remember to apply by the closing date of 15 January 2023

Do's & Don'ts of applying for a school place and an explanation of equal preferences

DO

- ✓ Complete a common application form online at [Admissions to Schools](#) or a paper form and submit by **15 January 2023**. If applying online **do** make a note of your log in details and password as you will need this any time you use the online facility.
- ✓ Express a preference for **3** schools. This means you are increasing your chances of being offered a place at a school you like. All preferences are considered equally - *see further notes below about equal preferences*
- ✓ Put the school names down on your application in the order you like them.
- ✓ Consider how you will get your child to school.
- ✓ Consider the admissions criteria that will be applied if the school is oversubscribed. This booklet provides details of the admissions criteria for schools and academies in this area.
- ✓ Consider naming your local school as **one** of your preferences. If you do not express a preference for your local school, you will not be considered for a place. This could lead to you receiving an offer of a place some distance from your home address and transport arrangements could prove difficult.
- ✓ Consider visiting schools and look at copies of the school prospectus for further information to help you decide which schools you want to apply for.
- ✓ Mention Sibling links. If you expect to have more than one child on roll at a school, name the youngest sibling as opposed to the eldest. Read the definition of a sibling in the booklet.
- ✓ Check whether any school you are interested in asks you to complete a supplementary information form (SIF). This is generally a requirement of Voluntary Aided Schools and Academies. Details can be found in their admission policies, copies of which are provided in this booklet.
- ✓ Return SIFs direct to the individual Voluntary Aided School or Academy by the requested date which is usually the same as the closing date but remember that you must still complete a common application form as well. If you only complete a SIF, you have **not** made an application for a school place.
- ✓ Use the address where you are living as of **15 January 2023** and tell us if you know your address is going to change **before 31 August 2023**. **(For more details about address changes and documentary evidence see page 32)**
- ✓ Tell us if your circumstances change.
- ✓ Do fill out all parts of the application form carefully and read any explanatory notes.
- ✓ Be honest. You need to make sure the information you give us is accurate. We may withdraw the offer of a school place where the application was fraudulent or intentionally misleading.

DON'T

- ✗ Miss the deadline for submitting your application form. If you miss the deadline your preferences will not be considered until places have been offered to all children for whom we received an application by the submission date of **15 January 2023**.
- ✗ Name the same school three times: this will be considered as one preference. Naming **only** one school does **not** increase your chance of being offered a place at that school.
- ✗ Name a school if you don't want a place there.
- ✗ Assume that you do not need to apply for the school where you already have other children in attendance – you **must** complete an application form.

- ✘ Assume that Bath & North East Somerset offers automatic priority to siblings. The Council offers priority to **local siblings only**. You will need to check the admissions criteria in this booklet and the individual school admission arrangements to see whether you are likely to be considered under the local sibling criterion.
- ✘ Assume that if one child in the family is offered a place that other children in the family (either older or younger) will also be able to gain a place at the same school.
- ✘ Assume that you do not need to apply for your local school. You must complete an application form. Even if you have spoken to your local school to inform them that you wish to be considered for a place, this does not constitute an application and is not part of the application process.
- ✘ Assume that just because your child attends nursery or pre-school at a school that you will automatically be offered a place. You will need to apply for a place in reception regardless.
- ✘ Assume that a nursery or pre-school establishment that your child attends will make an application for a school place on your behalf.
- ✘ Assume that the Local Authority or a school know that you want your child to attend a particular school without your making an application to be considered for a place.

An explanation about equal preferences

Every year we receive lots of questions from parents who want to know what equal preference means and how it works in practice if they put more than one school name down on their application form. Hopefully the following explanation will help in your understanding.

We recommend you name 3 school preferences on your application as this means that your child can be considered for a place at each of the schools you name.

We publish an admission number for each school. After the closing date we will then know how many preferences have been received for all the schools in our area. At this stage we know whether the individual schools are either under or over their admission number with the preferences that have been received for them.

If the school is undersubscribed, then any of the children whose parents expressed a preference for the school would initially qualify for a place. However, the preferences could be a combination of 1st, 2nd, and 3rd preferences.

If the school is oversubscribed, then the admissions criteria must be applied to all the preferences that have been made and the children are initially listed or ranked against the admissions criteria. When ranking the children, all 1st, 2nd, and 3rd preferences are considered equal. In this way the Local Authority will initially see that some children fall within the admission number for more than one of the schools that were named as preferences on the application. A child can only be offered one school place so in these cases we look at the order you named the schools on your application form and of the schools you are initially qualifying for we keep the highest preference school as the offer.

Therefore, it is important to list the schools in your priority order. The other lower preference school place that your child initially qualified for is then released for another child and the Local Authority continue to use the ranked list to establish who next qualifies for the place if the school is oversubscribed.

It must be acknowledged that the Local Authority cannot always meet parental preferences even if more than one school has been named on the application form. However, by naming more than one preference you are maximising your chances of being offered a place at a school you like, and it does not decrease your chance of qualifying for a place at your 1st preference school.

If you decide to **only** name one school as a preference you can only be considered for a place at that school and this action will **not** increase your chance of being offered a place.

Where parental preference of a school or schools cannot be met then the Local Authority has to offer an alternative school place if you live in its area. The school place offered may not necessarily be close to your home address. It will be the nearest school **with** a place available.

[Back to Contents Page](#)

Useful dates for your diary

| Date | Key Dates for Parents | What the Council is doing |
|--------------------------|---|--|
| 12 September 2022 | Online admissions applications will be available to complete | Publicise the admissions deadline and who needs to apply Council starts to receive applications |
| Beginning of September | | |
| September to January | Schools hold open days and evenings | |
| Midnight 15 January 2023 | Closing date for reception and junior applications | |
| By 27 January 2023 | Documentary evidence must have been provided by those families moving address | LA sends a report of applications received to other authorities |
| By 10 February 2023 | | LA sends a report of applications received to Academies, Voluntary Aided & Free schools |
| By 3 March 2023 | | All schools send a list of pupil rankings to the LA |
| By 24 March 2023 | | B&NES LA informs other LA's of the initial outcome of applications made by their residents for schools in B&NES, and other LA's will give the outcome of B&NES residents being offered places at schools in their LA |
| On 6 April 2023 | | B&NES will send details of final offers to be made to other LA's for their residents |
| By 14 April 2023 | | All schools informed by the LA of final offers up to the admission number and of refusals for oversubscribed schools |

| Date | Key Dates for Parents | What the Council is doing |
|------------------------------------|--|--|
| 17 April 2023 | Parents who made an online application by the closing date can login to their account to view and respond to the offer made. Parents who made a paper application will receive a letter sent out by 2 nd class post | |
| 2 May 2023 | Deadline for parents to respond to offer | |
| 2 May 2023 | Deadline for late applications for reception and junior | |
| 12 May 2023 | Deadline for on-time appeals written submission to be lodged | LA exchanges info with Academies, Voluntary Aided & Free schools and other LA's on late applications, on-time applications still seeking a place and places not accepted |
| End of May/early June 2023 | Parents start to hear about re-allocated places, once completed | Places which become available are re-allocated to children still seeking a place |
| End of June onwards | Appeals are heard | |
| Up to and including 31 August 2023 | Admissions will continue with further rounds of allocations until the process ends | |

[Back to Contents Page](#)

1 Explanation of terms used in this booklet

There currently are a total of 65 maintained infant, junior or primary schools within the Bath and North East Somerset area together with three special schools covering the primary age range. The full list is set out in Appendix 2 & 3.

Admission Criteria (Oversubscription Criteria)

These describe the way in which the Admission Authority gives priority to children when it allocates places at individual schools. The criteria are outlined in this booklet.

Academy Schools

In these schools the Academy Trust is responsible for admissions and set their own criteria. The oversubscription criteria for all Academy Schools within Bath and North East Somerset are outlined in this booklet.

Community Schools

In these schools the Local Authority (LA) is responsible for admissions and sets the criteria which are shown in this booklet.

Denominational Schools

The denominational schools in Bath and North East Somerset are run either by the Church of England or the Catholic Church in partnership with the LA. The Governors in Voluntary Aided (VA) schools are responsible for admissions and set their own criteria. The oversubscription criteria for all VA schools are outlined in this booklet.

Direct Line Distance*

** Unless otherwise stated in individual schools' admissions policy these definitions apply.*

Distance will be measured in a straight line from the address point of the child's home address to the address point of the school as defined by the Local Land and Property Gazetteer (LLPG). Measurements will be determined using the Local Authority's GIS computerised mapping system with those living closer to the school receiving the higher priority.

Home Address

This is the child's permanent address where he or she generally resides with their parents. Temporary addresses may not be used to obtain school places.

Looked after Children* (*see also Previously looked After Children*)

As defined in Section 22 of the 1989 Children Act. These children however are often referred to as children in care. In relation to school admissions legislation a 'Looked after child' is a child in public care at the time of the application to a school. * Documentation will need to be provided to Bath & North East Somerset Council as proof of care status.

Multiple Births

If a school is oversubscribed and a child from a multiple birth has qualified for the last available place within the admission number but the other child(ren) from that multiple birth have not qualified for a place. Please refer to Admission Arrangements for the school as to how these will be considered.

National Curriculum Year Groups

| Year | Group | Age of Pupil |
|------|------------------------------|--------------|
| R | Infant Years (Keystage 1) | 4-5 years |
| Y1 | | 5-6 years |
| Y2 | | 6-7 years |
| Y3 | Junior Years (Keystage 2) | 7-8 years |
| Y4 | | 8-9 years |
| Y5 | | 9-10 years |
| Y6 | | 10-11 years |

Oversubscribed Schools

These are schools where the number of applications is more than the admission number, which is the minimum number the school must admit.

Parent

This includes all those people who have parental responsibility for a child as set out in the Children Act 1989.

Planned Admission Number (PAN)

The Admission Number is the number of children which a school is normally required to admit in each year group. All schools would normally offer places up to the Admission Number and, once that is reached, any further admissions would normally be by appeal to an Independent Appeals Panel. The Admission Number for each school can be found in Appendix 2.

Previously Looked After Children (PLAC) & Internationally Adopted Previously Looked After Children (IAPLAC)*

Previously Looked after children (PLAC) are children who were looked after but ceased to be so because they were adopted or became subject to a Child Arrangement order or special guardianship order **as well as** Internationally Adopted Previously Looked after children (IAPLAC), those children who appear to the admission authority to have been in state care outside of England and ceased to be in state care as a result of being adopted. * Documentation will need to be provided to Bath & North East Somerset Council as proof of care status.

Internationally Adopted Previously Looked After Children (IAPLAC)*

A child is regarded as having been in state care in a place outside of England if they were accommodated by a public authority, a religious organisation, or any other provider of care whose sole purpose is to benefit society and ceased to be in state care as a result of being

adopted. * Documentation will need to be provided to Bath & North East Somerset Council as proof of care status.

Siblings*

** Unless otherwise stated in individual schools' admissions criteria these definitions apply.*

A sibling refers to children who are:

- brother or sister or half brother or sister.
- adopted brother or sister.
- stepbrother or sister:
- the child of the parent/carer's partner, and in every case the child should be living in the same family unit at the same address.

Special Schools and Special Units

There are three special schools and three primary schools with Resource Bases within the area, for children who have particular special education needs. Admission to these schools is restricted to children with an Education, Health and Care plan (EHCP) and a separate leaflet is available on this. If you have an enquiry about admissions to special schools, please telephone 01225 394306.

Undersubscribed Schools

These are schools where the number of applications is less than the admission number.

Voluntary Aided Schools (VA)

In a VA school the church, through the school governors, has a greater say in the running of the school, and is responsible for admissions to the school. Please refer to the booklet for details of VA Schools Admission Criteria.

Voluntary Controlled Schools (VC)

A VC school is one in which responsibility for its management is shared between the LA and the church, but the LA is responsible for admissions and sets the criteria which is shown in this booklet.

[Back to Contents Page](#)

Accessible Schools

Bath & North East Somerset Council is aware that some of our older schools, are not easily accessible for physically disabled children or adults. Where possible, we work to make schools more accessible and aim to have at least one primary school fully accessible in each area. A number of more modern and new schools provide fully accessible facilities. The table gives details of these schools.

Parents are still free to express a preference for a non-designated school for their disabled child, but only 'reasonable' adjustments can be made to accommodate them at these schools. This will not include major building alterations or additions but could include limited adaptations such as fitting an essential handrail or small ramp. Parents are encouraged to visit schools and discuss their child's needs with the Head Teacher to ensure the accommodation is suitable.

In addition to the schools named in the table there is extra support for those with a hearing impairment at Weston All Saints C.E. Primary School.

The following primary schools are generally accessible but may not be fully accessible.

| | |
|----------------------|--|
| North & Central Bath | St Andrews Church School Widcombe Infant Widcombe Junior |
| North West Bath | St Mary's Catholic Primary |
| South East Bath | St Martin's Garden Primary Freshford Church School |
| Paulton | Paulton Infant Paulton Junior |
| Keynsham & Saltford | Castle Primary |
| Chew Valley | Chew Stoke Church Primary |
| North East Bath | Batheaston Church School |
| Midsomer Norton | Midsomer Norton Primary |
| Peasedown | Shoscombe Church School |
| Radstock | St Mary's CE Primary (Writhlington) |
| Chew Valley | Bishop Sutton Primary School |

Schools listed above are generally accessible but will not be suitable for all children with disabilities or additional needs. Where possible parents should visit the school and discuss its suitability with the Headteacher and teaching staff.

The following modern primary schools are all fully accessible.

| | |
|---------------------|--|
| Radstock | Trinity Church School St Nicholas Church School |
| South Central Bath | St John's Catholic Primary |
| South East Bath | Mulberry Park Educate Together Primary |
| Keynsham & Saltford | St Keyna Primary |
| North West Bath | Abbot Alphege Academy |
| Keynsham & Saltford | Somerdale Educate Together Primary |
| Midsomer Norton | Norton Hill Primary |

2 How do I know which school will suit my child?

You can exercise a preference when deciding on a school for your child, **a preference that is limited only by the number of places available at any school**. To help you make your decision, it is important you obtain as much information as possible about the schools you are considering.

You should, where able to, visit local schools and obtain as much information as possible. All schools publish a school prospectus in which you will find an outline of: -

- the school's aims and objectives
- details of the curriculum offered
- National Curriculum Assessment results at the ages of 7 and 11
- attendance figures
- out of school activities
- details of policies such as behaviour and discipline.

Governing Bodies also publish a report to Parents each year and this summarises the school's achievements.

The Office for Standards in Education (OFSTED) now inspects all schools. Reports are available as is a copy of the school's action plan for development that is written after the inspection report is published. These reports can be seen on the Ofsted website or in the schools themselves.

Research has consistently shown that a number of factors are good indicators in helping you decide whether or not a school will suit your child. You may wish to consider these when you visit schools before making your decision. Some of the more important factors are: -

- the school places importance on working with parents
- there is a welcoming atmosphere
- staff have high expectations of the children and there is an emphasis on each child's achievements
- the school supports children particularly where there are additional needs
- a wide range of out of school activities is available for all ages and abilities
- other parents are involved in the work of the school and speak highly of it
- the school is well led by the headteacher and governors
- there is a plan showing how the school hopes to develop over the next few years
- the children's work is displayed with care
- governors are fully involved in the life of the school and parents have easy access to them
- the school makes good use of the LA and its support services.

This list is by no means complete and you will be able to judge a great deal from the atmosphere of the school during your visit if this has been possible. All children and all schools are different, and it is helpful if you can visit a number of schools before deciding which school is most likely to meet your child's needs.

You will have heard much about 'parental choice', and it is important for you to consider: -

- **the admissions criteria** - are you likely to get a place in your preferred school?
- **transport** -

if your preferred school is not the closest to your home, will you be able to organise transport?

This booklet will help you make these important decisions.

Summary

You have the right to express a preference for the school(s) you prefer but do not have a guaranteed choice as we may not be able to meet your preference. We will do all we can to offer your child a place in the school you prefer but remember that some schools become full, and ***we can only offer places up to the school's Published Admission Number (PAN).***

See also page 11 for an explanation about equal preferences.

[Back to Contents Page](#)

Appendix 1

Academic Year 2022/23

Information of on time applications received for Infant, Junior and Primary Schools. Number of preferences received, and places offered on 19 April and if a school was oversubscribed and refusals were made, category and distance of the last place offered if applicable.

| School | 1 st – 3 rd prefs | Admission No. | Places offered and where applicable refusals for 2022/23 | Places offered and where applicable refusals for 2021/22 | Places offered and where applicable refusals for 2020/21 |
|------------------------------------|---|---------------|--|--|--|
| Abbot Alphege CE Academy | 24 | 30 | 15 Offers | 9 Offers | 14 Offers |
| Bathamton Church School | 75 | 30 | 26 Offers | 19 Offers | 24 Offers |
| Batheaston Church School | 55 | 30 | 27 Offers | 24 Offers | 30 Offers Category C 1.876 miles 1 refusal |
| Bathford Church School | 39 | 30 | 19 Offers | 25 Offers | 18 Offers |
| Bathwick St. Mary Church School | 99 | 30 | 30 Offers Category 7 0.494 miles 12 refusals | 30 Offers Category 7 0.723 miles 9 refusals | 30 Offers Category 6 0.520 miles 9 refusals |
| Bishop Sutton Primary | 58 | 30 | 25 Offers | 13 Offers | 26 Offers |
| Cameley Primary | 32 | 25 | 20 Offers | 14 Offers | 24 Offers |
| Castle Primary | 58 | 60 | 40 Offers | 45 Offers | 56 Offers |
| Chandag Infant | 116 | 60 | 60 Offers Category D 1.436 miles 2 refusals | 54 Offers | 60 Offers Category D 0.997 miles 15 refusals |
| Chandag Junior | 62 | 68 | 62 Offers | 58 Offers | 65 Offers |
| Chew Magna Primary | 37 | 15 | 14 Offers | 15 Offers Category C 2.612 miles 2 refusals | 8 Offers |
| Chew Stoke Church Primary | 49 | 28 | 22 Offers | 25 Offers | 24 Offers |
| Clutton Primary | 34 | 25 | 17 Offers | 24 Offers | 16 Offers |
| Combe Down C. of E. Primary | 122 | 60 | 56 Offers | 58 Offers | 55 Offers |
| East Harptree C. of E. Primary | 28 | 15 | 15 Offers | 15 Offers Category C 0.559 miles 7 refusals | 15 Offers |
| Farmborough Church Primary | 47 | 25 | 22 Offers | 25 Offers Category C 3.616 miles 2 refusals | 29 Offers Category C 2.314 miles 8 refusals |
| Farrington Gurney C. of E. Primary | 43 | 15 | 15 Offers | 20 Offers Category C 1.567 miles 1 refusal | 11 Offers |

| School | 1 st – 3 rd prefs | Admission No. | Places offered and where applicable refusals for 2022/23 | Places offered and where applicable refusals for 2021/22 | Places offered and where applicable refusals for 2020/21 |
|--|---|---------------|--|--|--|
| Freshford Church School | 59 | 20 | 20 Offers Category E 1.243 miles 6 refusals | 20 Offers Category E 3.365 miles 6 refusals | 20 Offers Category C 4.253 miles 2 refusals |
| High Littleton C. of E. Primary | 79 | 25 | 25 Offers Category E 1.419 miles 1 refusal | 27 Offers Category E 0.798 miles 6 refusals | 28 Offers Category D 1.746 miles 4 refusals |
| Longvernal Primary | 42 | 30 | 23 Offers | 28 Offers | 27 Offers |
| Marksbury C. of E. Primary | 28 | 15 | 14 Offers | 9 Offers | 12 Offers |
| Midsomer Norton Primary | 73 | 45 | 22 Offers | 20 Offers | 36 Offers |
| Moorlands Infant | 122 | 60 | 60 Offers | 54 Offers | 58 Offers |
| Moorlands Junior | 89 | 60 | 51 Offers | 53 Offers | 57 Offers |
| Mulberry Park Educate Together Primary | 72 | 30 | 30 Offers Category 3 1.061 miles 4 refusals | 30 Offers Category 3 1.240 miles 3 refusals | 30 Offers Category 3 1.104 miles 9 refusals |
| Newbridge Primary | 108 | 60 | 52 Offers | 60 Offers Category C 1.292 miles 4 refusals | 58 Offers |
| Norton Hill Primary | 79 | *45 (30) | 45 offers Category B 2.356 miles 8 refusals | 38 offers Category B 3.707 miles 3 refusals | 23 offers (Opened Sept 2020) |
| Oldfield Park Infant | 135 | 60 | 60 Offers Category C 3.293 miles 1 refusal | 57 Offers | 60 Offers |
| Oldfield Park Junior | 93 | 60 | 60 Offers Category C 2.025 miles 2 refusals | 60 Offers Category C 0.960 miles 3 refusals | 60 Offers Category C 0.966 miles 7 refusals |
| Paulton Infant | 77 | 90 | 60 Offers | 67 Offers | 75 Offers |
| Paulton Junior | 62 | 90 | 62 Offers | 69 Offers | 77 Offers |
| Peasedown St. John Primary | 62 | 90 | 51 Offers | 47 Offers | 57 Offers |
| Pensford Primary | 23 | 15 | 12 Offers | 16 Offers Category C 2.565 miles 2 refusals | 13 Offers |
| Roundhill Primary | 45 | 60 | 30 Offers | 22 Offers | 31 Offers |
| St. Andrew's Church School | 64 | 30 | 30 Offers Category G 1.068 miles 2 refusals | 30 Offers Category G 0.131 miles 8 refusals | 30 Offers Category G 0.707 miles 3 refusals |
| St. John's C. of E. Primary (Keynsham) | 96 | 30 | 30 Offers Category D 0.400 miles 10 refusals | 30 Offers Category D 0.379 miles 23 refusals | 30 Offers Category D 0.335 miles 19 refusals |
| St. John's C. of E. Primary (MSN) | 62 | 60 | 35 Offers | 42 Offers | 59 Offers |
| St. John's Catholic Primary | 94 | 45 | 41 Offers | 45 Offers Category 6.6 1.263 miles 3 refusals | 45 Offers Category 6.11 1 mile 3 refusals |

| School | 1 st – 3 rd prefs | Admission No. | Places offered and where applicable refusals for 2022/23 | Places offered and where applicable refusals for 2021/22 | Places offered and where applicable refusals for 2020/21 |
|--|---|---------------|--|--|--|
| St. Julian's Church School | 39 | 16 | 16 Offers Category E 3.503 miles 2 refusals | 21 Offers Category E 3.802 miles 1 refusal | 9 Offers |
| St. Keyna Primary | 75 | 30 | 30 Offers Category C 0.530 miles 3 refusals | 30 Offers Category C 0.341 miles 24 refusals | 30 Offers Category C 0.237 miles 34 refusals |
| St. Martins Garden Primary | 43 | 30 | 23 Offers | 12 Offers | 22 Offers |
| St. Mary's C. of E. Primary (Timsbury) | 20 | 30 | 16 Offers | 18 Offers | 16 Offers |
| St. Mary's C. of E. Primary (Writhlington) | 18 | 30 | 16 Offers | 17 Offers | 18 Offers |
| St. Mary's Catholic Primary | 62 | 30 | 24 Offers | 25 Offers | 28 Offers |
| St. Michael's Junior Church School | 31 | 60 | 30 Offers | 28 Offers | 27 Offers |
| St. Nicholas' Church School | 35 | 60 | 22 Offers | 20 Offers | 38 Offers |
| St. Philip's C. of E. Primary | 87 | 40 | 40 Offers Category D 0.464 miles 14 refusals | 40 Offers Category D 1.097 miles 2 refusals | 40 Offers Category D 0.353 miles 16 refusals |
| St. Saviour's Infant Church School | 73 | 60 | 39 Offers | 25 Offers | 31 Offers |
| St. Saviour's Junior Church School | 31 | 60 | 32 Offers | 40 Offers | 53 Offers |
| St. Stephen's Church School | 97 | 60 | 49 Offers | 46 Offers | 33 Offers |
| Saltford C. of E. Primary | 84 | 60 | 48 Offers | 60 Offers Category D 1.794 miles 11 refusals | 60 Offers Category D 2.031 miles 16 refusals |
| Shoscombe Church School | 40 | 17 | 15 Offers | 17 Offers | 20 Offers Category 5 2.141 miles 1 refusal |
| Somerdale Educate Together Primary | 56 | 30 | 30 Offers Category 3 0.605 miles 4 refusals | 30 Offers Category 3 0.162 miles 16 refusals | 30 Offers Category 3 0.821 miles 15 refusals |
| Stanton Drew Primary | 18 | 10 | 6 Offers | 8 Offers | 5 Offers |
| Swainswick Church School | 35 | 12 | 12 Offers | 12 Offers Category 4 1.095 miles 2 refusals | 13 Offers Category C 0.932 miles 7 refusals |
| Trinity Church School | 32 | 30 | 23 Offers | 20 Offers | 20 Offers |
| Twerton Infant | 45 | 60 | 37 Offers | 43 Offers | 44 Offers |
| Two Rivers C. of E. Primary | 77 | 30 | 21 offers | 16 offers | 12 offers (Opened Sept 2020) |

| School | 1 st – 3 rd prefs | Admission No. | Places offered and where applicable refusals for 2022/23 | Places offered and where applicable refusals for 2021/22 | Places offered and where applicable refusals for 2020/21 |
|------------------------------------|---|---------------|--|--|--|
| Ubley C. of E. Primary | 19 | 15 | 12 Offers | 8 Offers | 6 Offers |
| Welton Primary | 53 | 28 | 26 Offers | 18 Offers | 27 Offers |
| Westfield Primary | 67 | 60 | 52 Offers | 39 Offers | 60 Offers Category C 2.463 miles 1 refusal |
| Weston All Saints C. of E. Primary | 114 | 90 | 62 Offers | 61 Offers | 75 Offers |
| Whitchurch Primary | 51 | 45 | 28 Offers | 17 Offers | 26 Offers |
| Widcombe Infant | 167 | 60 | 60 Offers Category 4 0.941 miles 12 refusals | 60 Offers Category 4 0.614 miles 21 refusals | 60 Offers Category 4 1.110 miles 6 refusals |
| Widcombe C. of E. Junior | 82 | 60 | 60 Offers Category 5 0.596 miles 2 refusals | 55 Offers | 60 Offers Category 3 5 refusals |

*These schools worked to this higher admission number rather than their published admission number shown in brackets

[Back to Contents Page](#)

3 At what age do children start school?

The information below will help you decide when your child should start school.

Primary school age provision in Bath & North East Somerset includes schools and academies. Academies are independent schools within the state sector. In this booklet, the word 'schools' includes both schools and academies unless a different procedure applies.

Children aged four

So that children can benefit from three full years of infant education, children are normally admitted to Bath & North East Somerset schools in the September following their fourth birthday. If your child was born between 1 September 2018 and 31 August 2019, he/she can start school in September 2023 and will join the reception class at the age of four.

Children aged five

Legally, children do not have to be in full time education until the term following their fifth birthday. This is the compulsory school age. Parents/carers can request that the date their child is admitted to school is deferred until later in the school year or until the child reaches age five in that school year.

Deferred admission

Parents/carers can request that their child attends part-time until they reach compulsory school age, or that the date their child is admitted to school is deferred until later in the same academic year. Parents/carers should indicate at the time of accepting a place that they wish to defer their child's admission until later in the school year. Deferral dates are set out as follows:

| Child's fifth birthday | Can defer until | If I defer which class will my child join? |
|---------------------------|-----------------|--|
| 1 September – 31 December | January | Reception class |
| 1 January – 31 March | April | Reception class |

Parents/carers are advised to carefully consider the implications of deferring their child's start date to school. Some parents/carers consider that it is better for their child to start school at the same time as other children in their age group, i.e., from the beginning of the academic year (September) to help their child settle and adjust to school life.

If parent/carers do not take up the reserved place during the school year and by the start of Term 5 at the latest, they will need to reapply for a year 1 place for the following academic year.

Delayed admission

Parents/carers may request that their child is admitted outside of their normal age group. It is the responsibility of the admission authority of the school to make the decision based on the circumstances of each case. Factors considered by an admission authority when considering admission outside the normal age group include:

- the needs of the child and the possible impact on them of entering Year 1 without having first attended the reception class
- in the case of children born prematurely, the fact that they may have naturally fallen into the lower age group if they had been born on their expected date of birth
- whether delayed social, emotional, or physical development is adversely affecting their readiness for school

Parents/carers should think very carefully about the implications of admitting their child outside the normal age group and ensure that joining a lower year group is in the best interests of the child. Note: The local authority is the admission authority for community and voluntary controlled schools. The governing body is the admission authority for foundation and voluntary aided schools, and the academy trust is the admission authority for academies and free schools.

Admission for summer born children/delaying when your child starts primary school

Parents/carers may request for their child to be held back a school year (to start school in the September after their fifth birthday) if the following both apply:

- they were born in the summer (1 April to 31 August)
- you don't think they're ready to start in the September after they turn four

To request a delayed admission, parents/carers must apply for a place during the standard application process timeline for their child's chronological age group, stating their reasons for requesting a delayed entry to the following year. It is for own admission authority schools to make the final decision, i.e., academies and voluntary aided schools. In respect of community and voluntary controlled schools, the local authority will decide in consultation with the head teacher.

Details of the council's policy on summer born children can be found on the council's website under [Delayed and Accelerated Policy](#)

Starting junior school

In Bath & North East Somerset there are a number of infant schools 'paired' to junior schools. If your child attends an infant school, they will leave at the end of Year 2 and you will need to make an application by the closing date of 15 January for them to start in year 3 at a junior school. Please note there is no automatic transfer from an infant to a junior school.

Parents/carers have the right to express a preference for a junior school and if a place at the parents'/carers' preferred school is not available then they have the right of appeal to an independent appeal panel.

For children in year 2 and on roll at a primary school, they will transfer automatically to year 3 at the same school.

If you are considering applying for a place in year 3 at a primary school for your child(ren) you will need to apply for a place for the September that they will start in Year 3 through the In-Year application process, details of which are set out in "In-Year admissions" section.

Attendance at a nursery class

Where a child attends a nursery class or children's centre located on a school site, parents/carers will still need to apply for a school place. Attendance at a nursery class or children's centre does not guarantee a place at an infant or primary school or give a child any higher priority for a place. A separate application must be made for transfer from nursery provision to primary school.

[Back to Contents Page](#)

4 How do I apply for a school place?

Don't be late! If your application is late, it will affect your chances of getting a place at one of your preferred schools. The closing date for all applications is 15 January 2023.

In order that your child can be considered for entry to school for the school year 2023/24 you must complete and submit the common application form by **15 January 2023**. Completed common application forms for residents of Bath & North East Somerset must be returned directly to Bath & North East Somerset Admissions and Transport Team.

Parents/carers who do not live in Bath & North East Somerset but who wish to apply for a place at a school in Bath & North East Somerset must complete the common application form available from the local authority in which they live. If an application form is received from a parent/carer living in England but outside the administrative area of Bath & North East Somerset, the form will be returned to the parent/carer.

Should any parent/carer include on their application form a preference for a fee-paying independent school, the independent school preference will be disregarded and the remaining preferences for schools will be given a higher ranking than that shown on the original application form.

All parents/carers must complete the common application form.

Who should apply for a school place?

Applications should be made by the person who has parental responsibility as the main carer as defined in the Children Act 1989. Parents are asked to confirm this on the application form. Where parents share parental responsibility for a child but live separately if two applications are received from the child's parents the LA will ask them to determine which application it should consider, and which application should be withdrawn. This is because the LA will offer only one school place to a child at any one time. If the parents cannot agree they should resolve the issue through the court system. For example, to obtain a 'Specific Issues Order' which specifies which parent has responsibility to make decisions on school preferences.

However, in the absence of any Order the application received from the parent who receives Child Benefit for the child will be the only one considered. Parents may be asked to provide supporting documentation confirming receipt of Child Benefit. Where the parent/carers are not entitled to Child Benefit the LA will ask for proof of the child's home address as held by the doctor's surgery at the point of application. Bath & North East Somerset Council cannot become involved in disputes between parents/carers.

Who has parental responsibility?

In England and Wales, if the parents of a child **are married** to each other at the time of the birth, or if they have jointly adopted a child, then they both have parental responsibility. Parents do not lose parental responsibility if they divorce, and this applies to both the resident and the non-resident parent.

This is not automatically the case for **unmarried parents**. According to current law, a mother always has parental responsibility for her child. A father, however, has this responsibility only if he is married to the mother when the child is born or has acquired legal responsibility for his child through one of these four following routes:

- (From 1 December 2003) by jointly registering the birth of the child with the mother.
- By a parental responsibility agreement with the mother.

- By a parental responsibility order, made by a court.
- By marrying the child's mother after the child is born

Living with the mother, even for a long time, does not give a father parental responsibility and if the parents are not married, parental responsibility does not always pass to the natural father if the mother dies.

All parents (including adoptive parents) have a legal duty to financially support their child, whether they have parental responsibility or not.

Parental responsibility would also apply to a child's guardian (appointed under a will), any person granted a Residence Order for the child, or the Local Authority if a Care Order is in force in respect of the child.

Completing the common application form

Parents/carers of children resident in Bath & North East Somerset have two options for completing the common application form:

- [Apply Online](#) You may apply using your mobile/tablet/handheld device
- Print and complete the application form available to download at [Admissions to Schools](#) and return it to the address indicated on the form or by email to admissions_transport@bathnes.gov.uk Please be aware that a paper application form received by post will only be acknowledged if you have provided a stamped addressed envelope or card.

Applying online

You will need to have an email account set up before registering to make your application online. You will be asked to complete security details, such as email and password and then you'll receive a code to access the portal to make your application. Once you have completed and submitted an online application form you will receive an email to confirm your application has been received.

Online applications: You may change the details on your application up until the closing date; though it is very important to remember to re-submit each time you view or make changes to your application. If you do not re-submit your application after making changes it will not be submitted as on-time and your application will be treated as late.

Completing and returning a paper application form

Completed common application forms for residents of Bath & North East Somerset must be returned directly to Bath & North East Somerset Admissions and Transport Team. Applications for a place will be considered only if parents/carers have submitted the completed common application form by the closing date of **15 January 2023**. Any change in preference received before the closing time and date will supersede all previous applications which will be withdrawn.

Change of school preferences or school preference order

After the closing date of 15 January 2023, parents can make a change to their school preference or a change to their school preference order, but they do so on the understanding that their previous application will be withdrawn. If parents decide to change, then their child will not be considered for a school place in the first round of allocations even if the original application was received before the closing date. The change of preference or preference order will be considered as a completely new late application.

Please note: Each LA own and hold records for the children resident in their LA at the start of the applications process and as such it is only the original LA that can amend any details relating to the child's application. Another LA cannot make any changes to a different LA's records but should be advised of any changes by the LA which owns the original record. Any changes received and accepted by this LA, as the home LA, which involve schools within another LA area will be passed to that LA as soon as possible.

Supplementary Information Forms (SIF's)

All parents/carers must complete the common application form. However, individual admission authorities for academies, voluntary aided and foundation trust schools may wish to use supplementary information forms (SIF's) to collect additional information in order to apply their over-subscription criteria. Parents/carers will need to contact the individual schools for information.

Admission for children with an Education, Health and Care Plan (EHCP)

If your child has an EHCP and you have moved or are moving into the area you should contact your current named officer who will provide advice to you about the necessary procedures to be followed. Children due to start in the reception year group living in Bath and North East Somerset need to make an application which should be submitted by the closing date of **15 January 2023**. The applications for children with an EHCP are dealt with through the SEN Code of practice and their placement is determined through the statutory assessment process or an annual review of their plan. All schools are consulted before being named on a pupil's plan and schools have the opportunity to draw attention to any difficulties arising from oversubscribed year groups. If a school is named on a plan this will take priority over the Admissions Criteria although, wherever possible the place will be offered within the Admission Number for the school. Please note that for children with an EHCP the admissions criteria listed under Section 10 of this booklet does not apply.

[Back to Contents Page](#)

5 What else do I need to consider in completing my application?

Find out which schools serve your area

A map at the front of the booklet shows the location of each school and some academy or voluntary aided church schools may serve a particular parish area. Details of these parish areas, where appropriate, are available by contacting the schools directly.

We strongly recommend considering naming your local school as one of your preferences. This will increase your chances of getting a place at a local school, in the event that your highest ranking preference cannot be met (if, for example, your highest ranking school is over-subscribed from applicants living closer than you and/or any higher priority applications). If you do not express a preference for your local school, you will not be considered for a place. This could lead to you receiving an offer of a place some distance from your home address and transport arrangements could prove difficult.

Local sibling links – younger brothers and sisters

Many parents/carers express a preference for younger brothers and sisters to attend the same school. Please check the over-subscription criteria for allocating places as some schools give priority to local siblings living up to a certain distance. You should be aware that a local sibling is not the same as a sibling. Children are defined as a sibling under the community and voluntary controlled admission criteria where:

- Children who live within a 1.5 mile radius* of the school and for whom there will be a sibling in attendance on the admission date at the preferred school.
- Children who live outside a 1.5 mile radius* of the school but it is their **closest** School and for whom there will be a sibling in attendance on the admission date at the preferred school.

And

- they are full or half brother or sister; or
- they are adoptive brother or sister; or
- they are children of the same household

Please note that the offer of a place at any school does not guarantee an offer of a place for a sibling at a later date. Different authorities will vary in the priority that they give to siblings. You will need to consult the relevant admission authority for further advice, i.e., where an admission authority serves an Area of Prime Responsibility (catchment area or parish area), only children who live within the Area of Prime Responsibility will be afforded priority of admission under the local sibling criterion.

You should note that your child will not be considered under the local sibling criterion if you do not meet the criteria above. It is therefore important that you consider stating a preference for your local/nearest school, particularly if you have younger children who you would like to attend the same school in later years.

Consider how you will get your child to school

It is your responsibility as a parent/carer to get your child to school. You must think very carefully about the distance from home to school and about how your child will travel to school.

Most children are not eligible for free transport to school. You may wish to contact your local school and ask for details of their school travel plan. The plan identifies various measures the school has put into place to help reduce the number of car journeys made to and from school. Alternative travel options and schemes include walking buses; road safety workshops, and cycle training. The range of transport options available in Bath & North East Somerset can be found on the council's website at [School Transport](#)

Some schools receive more applications than there are places. While we will do our best, there is no guarantee that we will be able to offer you a place at your preferred school even if you meet the admission criteria.

Use your child's permanent home address

You must apply using your child's permanent home address as of **15 January 2023**. The child's normal permanent home address where he or she lives with his or her parents or legal guardians will be used to decide where the child lives. Bath & North East Somerset Council cannot accept an address of a business, relative, friend, childminder, or a temporary address.

In fairness to all parents, the Council reserves the right to require documentary evidence of the genuineness of a family address and if this is not produced the Council reserves the right to make its own enquiries with, for example, the Council Tax Office.

Temporary addresses cannot be used to obtain school places. If parents or guardians plan to move documentary evidence will be required and in order for any address changes to be taken into account in the first round of allocations made on **17 April 2023** the appropriate documentary evidence must be submitted by midnight on the closing date of **15 January 2023**. However, if details of a change of address that will occur after the closing date (and before the start of term 1) is received with the appropriate documentary evidence by **27 January 2023** i.e., before the LA has sent details of applications to other councils, it will be considered in the first round of applications. **In all cases, it is the parent or carer's responsibility to confirm with the LA that they have received the documentary evidence by the deadline.** Examples of evidence that may be acceptable to determine a child's address are: -

- A solicitor's letter confirming exchange of contracts and completion date for a property which is being purchased or a property which is being sold.
- A copy of a signed rental agreement or a solicitor's letter if moving to a council or rented property and proof of your sale or Notice to Quit on your current/previous property.
- A copy of a council tax bill or utility bill such as water, gas, or electricity in your name for your newly owned or rented property **together with** proof of your sale or Notice to Quit on your current/previous property.
- If you are moving in with a relative a letter from them will be required confirming the date you will be moving in together with a copy utility bill showing their name and address. A solicitor's letter will also be required confirming that completion of contracts has taken place on your sale or Notice to Quit on your current/previous property.
- In the case of children of UK Service Personnel with a confirmed posting to the area or Crown Servants returning from overseas, an official letter declaring the relocation date and a Unit postal address or quartering area address should be provided.

Applications received each year will be checked to confirm addresses using for example the electoral roll, council tax offices and if appropriate the school currently attended before allocations are made. A copy of a recent utility bill may also be requested. In certain additional cases proof of residency will also be determined by using the above methods. Once proof is obtained to the LA's satisfaction that the parent is resident at the address given it will be accepted that the child is also resident at the same address.

Things to consider in advance of a house move

Parents/carers considering a house move in advance of submitting an admission application will very often want to research the local schools that serve their new address. Parents/carers of more than one child may want to reassure themselves that their younger child will have a good chance of obtaining an offer of a school place at the same school as their elder sibling. In these circumstances, parents/carers are advised to consider the following:

- the schools closest to your new home address/which schools serve your new local area
- the admission arrangements for your preferred school(s) for the relevant year of admission
- the consequences of moving home on the outcome of your admission application for younger children, the distance from your new home to your preferred school(s) and how you will get your child to school

Please be aware that sometimes a house move can mean that families with more than one child no longer qualify for admission to their preferred school(s) under the local sibling criterion. This can cause disappointment for families who want their children to attend the same school. While there can be no guarantee about the outcome of admission applications, parents/carers are advised to read the full admission policies for a school and understand the information contained in the admission booklet.

Tell us if your circumstances change

If your circumstances change during the application process or if you know in advance that your circumstances are going to change, for example you are planning to move home before your child starts school, it is important that you tell us.

Be honest – we may ask for documentary evidence

Ensure the information you give us is accurate. In fairness to all parents/carers, Bath & North East Somerset Council reserves the right to require documentary evidence in support of the application and to make its own enquiries. Examples of evidence which may be requested include a birth certificate, a copy of a court order, a solicitor's letter confirming exchange of contracts (and completion date on a new property), a rental agreement, a letter from an employer, a utility bill or evidence of a child's residency. Please be aware that Bath & North East Somerset Council may withdraw an offer of a place where an application is fraudulent or intentionally misleading.

If false information is provided on an application form before an offer of a school place is made, then the application will be void. Parents could submit a further application if they so wished. If this application is received after the closing date it will then be regarded as a late application. If it is found that a sibling currently at the school was offered a place based on false information, then for any further application received the LA will discount the sibling connection.

What if I change my mind before the closing date?

Any change in preference received before the closing date will supersede all previous applications. Previous applications will be withdrawn.

Please remember if you submit your application online and make changes to or view your application you will need to ensure you re-submit your application.

Applications or changes of preference received after the closing date are **'late applications'** and will not normally be considered for the initial allocation of places.

What happens if my application is late?

If your application is late, it may affect your chance of getting a place at one of the schools you have stated as a preference for your child. On time applicants will be allocated a school place before late applicants. Only in exceptional circumstances will Bath & North East Somerset Council consider that there are extenuating reasons as to why the application could not have been submitted by the closing date and for allowing the application to be treated as if it had arrived on time. This will only apply to late applications received before **27 January 2023**.

Examples of extenuating circumstances might include a close family bereavement or a serious illness for which documentary evidence would be required.

[Back to Contents Page](#)

6 Travel assistance to school – what you need to know

Sustainable modes of Travel to School.

Bath & North East Somerset Council is fully committed to promoting walking, cycling and, for longer distances, greater use of buses for the school journey.

When you are thinking about schools you would like your child to attend, please consider the following:

- Children who walk to school are fitter, have better developed social skills, are more familiar with their surroundings, have better road sense and arrive at school more relaxed and ready to learn.
- Walking, cycling, or using public transport offers children greater independence and flexibility - which is especially important at a time of change in the nature of the school day, with greater numbers of pupils staying for extra study, extracurricular activities, and sport.
- Walking, cycling, or using the bus reduces congestion on the roads.
- Consider the cost of driving your child to school.

Where walking, cycling or public transport are not feasible, car sharing may be an option. This can save time and money and helps cut traffic congestion and air pollution as well as being sociable for children. Car sharing can also reduce the costs for children whose families do not own a car.

Parents who are interested in learning more about their children's School Travel Plan, or in helping to implement the actions within it, should contact their child's school.

Will I be offered free travel assistance to school?

The policies that apply to school admissions and transport to school operate separately. If a pupil is offered a place in a preferred school this does not in any way guarantee that assistance with travel will be available. If transport to school is an issue for you when applying for a school, you are strongly advised to take this into consideration before stating your preference.

There can be a number of reasons why a child may qualify for home to school transport. The home address which determines entitlement to transport is the place where the child is normally resident with his or her parent(s). Please refer to the sections below for further information.

It is your responsibility as a parent/carer to get your child to school. You must think very carefully about the distance from home to school and about how your child will travel to school. Most children are not eligible for free travel assistance to school.

How do I check if my child is eligible for free travel assistance to school?

The LA will provide free transport between home and school if:

- the school attended is the nearest appropriate one, as designated by the LA, and
- the distance between home and that school, when measured by the nearest available walking route is **two miles** or more for children aged five to seven and **three miles** or more for children aged eight years and above. These distances are referred to as "statutory walking distances".

- the LA will also provide transport if the school attended is the closest school to your home address and closer than the designated school and the statutory walking distance given above are met.

Children starting in the reception and junior year group are currently automatically assessed for school transport by the local authority. This may be changing in the future as Bath & North East Somerset is considering moving towards self-assessment for school transport via the 'Apply for it' scheme. If and when this takes place, further details would be available on the [School Transport](#) website.

Note: Assistance with travel, if agreed, is provided only at the beginning and end of the normal school day and from the home address.

If you do not apply for your nearest appropriate school as your highest ranking preference your child may not be given free travel assistance to any school. You must then accept full responsibility for the cost and arrangements of your child's travel to and from school for the duration of their primary phase education.

Additional Transport for Low Income Families

Transport will be provided for children of primary age between the age of 8 and 11 who live more than two miles from the nearest school and are in receipt of or entitled to benefit based free school meals or their maximum level of working tax credit (with no reduction due to income). The distance is measured in the same way as the statutory walking.

Transport on Medical Grounds

In exceptional circumstances home to school transport may be provided on medical grounds, to enable pupils to attend their designated area school even though they may live within the statutory walking distance from the school. The Health Authority or your General Practitioner will need to supply details of the child's medical needs.

Will I be offered travel assistance to a faith school?

From September 2014 the Council agreed a phased withdrawal of subsidised home to school transport services for new starters attending denominational schools from September 2014 who would not qualify under other home to school policy subsets, (e.g., as a low-income family) save in the case of children with siblings currently at the school. This option would not affect students who attended the school before then, only new pupils joining after September 2014.

Further information regarding the entitlement and charges for denominational transport can be found on the council's website at [School Transport](#) Please note that there will likely be an inflationary increase each year.

Parents/carers considering admission to a faith-based primary school are advised to consider the journey involved and how their child will travel to school.

Fare Paying Passenger Transport

If your child is not entitled to transport under the above policies, he/she may be able to take up a spare seat on a hired vehicle only (this does not include public bus services), if one is available, on payment of the termly charge determined by the LA. However, it must be emphasised that before making your application, it is of vital importance that you understand that seats either may not be available at all if the fare paying passenger transport scheme ceases or once offered can be withdrawn at short notice (normally one month) if:

- a child entitled to free transport requires a seat on the vehicle

- it becomes possible to reduce the size of the vehicle provided for passengers entitled to free transport
- the vehicle is no longer required for passengers entitled to free transport and the service is withdrawn altogether

Behaviour on Transport

Children travelling on LA transport are expected to conform to the accepted code of behaviour which applies in the school. Any breach will be dealt with by the school.

Summary

Remember that you may only qualify for free transport if your child is attending the nearest appropriate school.

Application process for assistance with travel to school

The details of school transport policies are available at [School Transport](#) this includes information on how to apply, how applications are considered and how to appeal if an application is refused. Application forms for school transport can be submitted from this site. Applications for school transport shouldn't be submitted until confirmation of a school place has been allocated for your child.

[Back to Contents Page](#)

7 What happens to my application?

Co-ordinated admissions - Processing your application

All local authorities must have a co-ordinated admission scheme which allows details of applications to be shared with other admission authorities, as appropriate, to ensure that parents/carers receive an offer of a single place on the offer date.

Considering your preferences

Once we receive your completed application by the closing date of **15 January 2023**, we will consider all your preferences and we will try to offer you a place at one of your preferred schools.

In the case of admission to academies and voluntary aided schools in Bath & North East Somerset all applications will be considered with reference to their own over-subscription criteria where necessary. Ranked lists of potential offers will then be returned to Bath & North East Somerset Council including the reason why each applicant qualified for a place, by **03 March 2023**. The list will also include those pupils, for whom a place cannot be offered, in rank order, explaining the reasons for refusal against the over-subscription criteria, and in the order in which additional offers will be made should places become available.

Schools **will not** be notified of the preference order of an application until final offers have been made and schools receive the outcomes on **14 April 2023**.

Applications for all schools will be considered under an 'equal preference' system. This means that all your preferences will initially be considered equally against the admission criteria regardless of the priority order that you put them in. This does not mean that we disregard your preferences; it means that in the event that you are unsuccessful in gaining a place at your first preference school, your second or third preference will not be treated any less favourably just because you placed them as a lower preference.

Receiving your offer

Online applicants will be able to view the outcome of their application for a school place on **17 April 2023** by logging onto the online system using their password. If you applied using the paper application form and opted to receive the outcome via email, this will initially be sent to your email account. If you have not opted to receive the outcome via email you will be notified of the offer of a school place by letter to be posted 2nd class on **17 April 2023**. Bath & North East Somerset Council is unable to inform parents/carers of the offer by telephone.

Bath & North East Somerset Council will make the single offer of a place for reception or Year 3 to parents/carers resident within its area. Places will be allocated against the published oversubscription criteria without reference to the applicant's order of preference. Where a child qualifies for a place at more than one school, the final offer will be the highest ranked school with a place available.

In the case of parents/carers resident in Bath & North East Somerset being refused a place at all of their preferred school(s), an alternative school place will be offered to their child at the nearest school to the home address with a place available and they will be informed of the options available at that stage including their right of appeal.

Parents/carers must respond to the offer directly to Bath & North East Somerset Council by **02 May 2023**.

Late applications and changes of preference

Applications submitted after the closing date are 'late applications' and will not normally be considered for the initial allocation of places. However, Bath & North East Somerset will consider the circumstances of a late application before deciding whether or not to consider it along with the on-time applications.

For over-subscribed schools, if places become available following the initial allocation of places for a school, the same criteria will be applied to 'late applications', formal appeals and for children whose parents/carers have just opted to be on the waiting list. Where a place can be offered at a preferred school for a child on the waiting list or appeal, **any place previously offered at a lower preference school will be withdrawn.**

In the case of under-subscribed schools all late applications submitted since the closing date and up until the **02 May 2023** will be considered together in the second round of allocations. If the school is then oversubscribed all late applications will be considered under the admissions criteria. If the school is still undersubscribed all applicants will be offered places and any further late applicants dealt with on a first come, first served basis.

Details of late applications, on time applicants still seeking a place at their preferred schools and of places not accepted following the initial allocations will be exchanged with academies and voluntary aided schools and other local authorities as far as possible by **12 May 2023** to enable a second round of allocations for all schools to take place by the end of **May/early June 2023**.

The co-ordinated admissions process will continue to be operated, with application data being exchanged with voluntary aided schools, academies, and other local authorities as appropriate, for all applications received up to **31 August 2023**.

[Back to Contents Page](#)

8 I've been offered a school place, what next?

Once you receive your offer of a school place on **17 April 2023** you must respond to the offer directly to Bath & North East Somerset Council by **02 May 2023**. Note: If you applied online, you will be able to view the outcome of your application online via the parent portal.

All offers are accompanied with details explaining the next stage of the process. Your options are as follows:

- accept the place offered
- ask Bath & North East Somerset Council to consider your child for a place at an alternative preferred school(s).

And where it has not been possible to offer a place at you preferred school(s)

- accept the place offered
- ask Bath & North East Somerset Council to consider your child for a place at an alternative preferred school(s)
- opt to put your child's name on a waiting list but not formally appeal (this applies only if you have been refused a place)
- appeal against the Admission Authority's decision to refuse a place at your original preferred school(s). Your child's name will also be added to the waiting list for the school(s) concerned.

Where a response from you has not been received by **02 May 2023**, we will contact you to advise you of the need to respond within one week and point out that the place may be withdrawn if you do not. Where a place has been withdrawn this will be confirmed in writing.

Withdrawing offers

Once the offer of a place has been made, Bath & North East Somerset Council may withdraw the offer, but only in very limited circumstances, for example:

- where the application was fraudulent or intentionally misleading; or
- where a parent/carer has not responded to the offer within the time requested; or
- where it is possible to offer a higher named preference
- where the offer was made as a result of an administrative error

Waiting lists

The waiting list comprises those children refused a place whose parents/carers have lodged a formal appeal or have asked to only go on a waiting list.

The waiting lists will be held until the end of the **2023/24** academic year for Community and Voluntary Controlled schools. The admission authority for Academy and Voluntary Aided Schools will maintain their own waiting lists from the start of the **2023/24** academic year. They must operate their waiting list until at least the end of Term 2 (December 2023), but each school may decide to hold their waiting list for a longer period.

Priority order on the waiting list will be determined by the oversubscription criteria, not by the date of joining the waiting list.

Children who are the subject of a direction by a local authority to admit or who are allocated to a school in accordance with the Fair Access Protocol must take precedence over those on a waiting list.

Where a place becomes available and Bath & North East Somerset Council or the admission authority, after using all advised contact details is unable to contact a successful applicant for a place within 10 school days, the available place will be offered to the next child to qualify for a place. Where an applicant decides to place their child(ren)'s name on a waiting list, it is for the applicant to keep Bath & North East Somerset Council and the school informed of updated contact and address details.

Can I appeal if my child has been refused a place at my preferred school?

If a place is not offered at the parent's/carer's preferred school, there is the right of appeal to an independent appeal panel. When offers of places are made on **17 April 2023**, if it has not been possible to offer your child one of the schools named as a preference, you will automatically be sent details of how to appeal. Pending your appeal, your child will be offered a school place at a lower named preference if possible or at the nearest school with a place available.

Further information concerning how to appeal will be explained in the decision letter and it will give the reasons for the refusal by the school's admission authority. Details of the appeals arrangements for academy, voluntary aided and foundation schools can be obtained directly from the schools concerned.

Please note that if you wish to appeal for one of these schools, your appeal should be returned to the address on the appeals form. As already mentioned, details concerning how to appeal will be explained in the decision letter, but you will have at least 20 school days from the date of notification that your application was unsuccessful to prepare and lodge your written appeal.

Appeals must be made in writing and include:

- name, address, and date of birth of your child
- name of the preferred school
- reasons for preference
- grounds for the appeal.

The appeals panel will pay attention to circumstances which support your application for the school together with the Admission Authority's reasons for refusal. The appeals panel is not bound by the Admission Authority's published criteria and has the power to exceed the school's Admissions Number. The panel's decision is binding on you, the school, and the schools Admission Authority.

Infant Class Size Appeals

No infant class can now have more than 30 pupils in it. The class size limit does mean that independent Appeals Panels will not, in normal circumstances, be able to allow an appeal if that would cause the relevant class to exceed 30 pupils. This will have some impact on parental preference. Parents may need to take this factor into account when expressing a preference for a school.

Schools will be able to provide you with more information, as to how the reduction of infant class sizes affects them and possibly your child.

At Infant Class Size Appeals the independent appeal panel can only look at:

- Whether the admission arrangements were lawful
- Whether the admission arrangements were incorrectly applied, and your child should have been offered a place.
- Whether it was unreasonable/perverse (in law) to refuse your preference. The appeal panel would need to be satisfied that the decision was so completely absurd /

outrageous that no reasonable person, with the same facts, would have made that decision.

Given the extremely limited grounds on which an appeal may be upheld, Infant Class Size Appeals are very rarely successful. Most applicants who have been refused a place at their preferred school consider the refusal to be perverse but as mentioned above the word has a stronger meaning in its legal sense. For example, a decision that makes it impossible for an applicant to transport all their family to school on time, or even impossible for them to continue working, is very unlikely to be perverse. The courts have established this.

Parents/carers can find it frustrating when they realise how very limited the powers of the Appeal Panel are when considering Infant Class Size appeals. The information is being drawn to your attention, so you can make an informed decision about whether you wish to appeal or not. The purpose of this information is to explain clearly the role of the Appeal Panel and not in any way discourage you from appealing, which is of course, your legal right if you feel you have grounds to do so. The Appeal Panel decision is binding on all parties i.e., you, the school, and the LA/Admission Authority of the school.

Can I have a second appeal for the same school?

If an appeal is unsuccessful there is no automatic right to a further appeal. However, if there are significant and material changes in the circumstances of the parent/carer, child, or school since the time of the original appeal, these will be considered. A significant and material change in circumstances might include:

- where a change of address has occurred since the original appeal which means the home address is significantly closer to the preferred school.
- where a sibling link has been created at the preferred school which was not there at the time of the original appeal
- where new evidence is provided and is supported by a letter from a doctor, psychologist, social worker, or health visitor which could not have been introduced at the time of the original appeal hearing

Any requests for a further appeal should be made in writing to the relevant admissions authority for the school.

[Back to Contents Page](#)

9 In-Year admissions

Applications during the school year 2023/24 (In-Year admissions)

If you move into the local area during the school year 2023/24 or are already resident in Bath & North East Somerset and wish to move your child to another school, you will need to complete the In-Year application form. The forms can be used to apply to any school within the Bath & North East Somerset Council area and is available at [In Year Admissions](#). Alternatively, you may contact individual schools or the Admissions & Transport team for an application form.

For In-Year admissions, completed application forms should be returned direct to the admissions authority named as the 1st preference school. On receipt of an In-Year application, all schools **must** notify Bath & North East Somerset Council of both the application and its outcome.

Academies and Voluntary Aided schools are their own admissions authorities. Own admission authority schools may also require parents/carers to complete a supplementary information form (SIF) to enable the school to collect additional information in order to apply their over-subscription criteria.

In-Year applications for Bath & North East Somerset schools can be made for any existing year group. You may make separate applications for more than one school. Your application will be considered against the admission criteria. For In-Year Admission Arrangements for each school please refer to the individual admission policies, also available on the school's web page.

Offers of a school place (In-Year admissions)

Where a parent/carer has been offered a place for their child, they will be expected to take up the offered place within 28 school days otherwise the offer of a place may be withdrawn.

Fair access for children admitted outside the normal admissions round

Bath & North East Somerset Council has a Fair Access Protocol which provides for children admitted to school outside the normal admissions round. The protocol exists to ensure that access to education is secured quickly for children who do not have a school place and that all schools take their fair share of vulnerable children or those who are hard to place. The protocol will be used to place children during the school year and not at the beginning of the school year as part of the main admission round. Most children will be admitted to school under normal admission procedures.

The protocol applies to the following groups of children:

- children either subject to a Child in Need Plan or a Child Protection Plan or having had a Child in Need Plan or a Child Protection Plan within 12 months at the point of being referred to the Protocol.
- children living in a refuge or in other Relevant Accommodation at the point of being referred to the Protocol.
- children from the criminal justice system.
- children in alternative provision who need to be reintegrated into mainstream education or who have been permanently excluded but are deemed suitable for mainstream education.
- children with special educational needs (but without an Education, Health and Care plan), disabilities or medical conditions.
- children who are carers.

- children who are homeless.
- children in formal kinship care arrangements.
- children of, or who are, Gypsies, Roma, Travellers, refugees, and asylum seekers.
- children who have been refused a school place on the grounds of their challenging behaviour and referred to the Protocol in accordance with paragraph 3.10 of the Admissions Code.
- children for whom a place has not been sought due to exceptional circumstances.
- children who have been out of education for four or more weeks where it can be demonstrated that there are no places available at any school within a reasonable distance of their home. This does not include circumstances where a suitable place has been offered to a child and this has not been accepted; and
- previously looked after children for whom the local authority has been unable to promptly secure a school place.

Full details of the Fair Access Protocol are available on the council's website under 'Apply to move into an existing school year group' at [Admission to Schools](#)

Please be aware that there is no guarantee that a place will be offered at a school of your preference, and you still have the right of appeal regardless of your child's circumstances (except in very limited circumstances, for example if your child has been twice excluded from school).

Admission of refugee children

- The normal admission process is applied to admission applications received from all parents/carers, including parents/carers of refugee children.
- The council will need to be satisfied those applicants have a right to education in the UK.
- The council will seek appropriate verification in advance of processing applications for admission to school
- Where parents/carers are unhappy with the allocated school, there is a right to an independent appeal

Early/late transfer of children

It is Bath & North East Somerset Council policy that children should move from one year group to another with their chronological age group, including children with special educational needs and those with English as an additional language.

Exceptionally, a child may be educated with a peer group one year younger or one year older than their chronological age group. This needs careful thought. Once placed in a younger age group it is difficult, if not impossible, for a child to return to their chronological age group successfully. Equally, once accelerated it is very difficult for a child to return to their age group without feeling demoralised. If it is agreed that it is in the child's interest to be educated with a younger or older peer group, you will be required to sign a form to confirm that you understand and accept the implications of late/early transfer. If you are seeking early/late admission to a Bath & North East Somerset school you should please read the [delayed and accelerated admissions policy](#) which is available on our web page before submitting the request for consideration to the appropriate admission authority.

A child without an Education, Health and Care Plan may be educated with a peer group one year younger if there is an identified educational need and particular conditions are met. Further details are available from the school concerned and the Special Educational Needs Section.

Additional Information

Parents of **children of existing primary and secondary school age** moving into the LA or wishing to change their child's school for any other reason can apply for places within this LA at any time. Please see the information given under In-Year admissions which explains how to apply and how your application will be processed.

Below is a list of points which schools must not do:

Admission authorities **must not** use supplementary application or information forms that ask:

- a) for any personal details about parents and families, such as maiden names, criminal convictions, marital, or financial status (including marriage certificates)
- b) the first language of parents or the child.
- c) for details about parents' or children's disabilities, special educational needs, or medical conditions.
- d) parents to agree to support the ethos of the school in a practical way.
- e) both parents to sign the form or for the child to complete the form.

[Back to Contents Page](#)

10 Admissions criteria for primary schools

When schools are oversubscribed the admission authority for the school must apply criteria for determining which children receive priority for admission. For Academy schools, these criteria are determined by the Academy Trust and in the case of Voluntary Aided Schools, these criteria are determined by the governors.

Please note: all admission authorities are required to publish details of their admission arrangements 18 months in advance of the school year before the arrangements are to apply. For admission in **September 2023** this means that parents/carers were able to read and access the **full arrangements** from **15 March 2022** onwards available on [Admission Arrangements 2023-2024](#)

The oversubscription criteria will be applied by the appropriate admission authority to all applications received by the published closing date of **15 January 2023** apart from those received for children with an Education, Health and Care Plan. The criteria will be listed under each school on the following pages **but please refer to the full admission arrangements for further information.**

The Local Authority is the admission authority for Community and Voluntary Controlled schools in Bath and North East Somerset.

Applications for children with an EHCP are dealt with through the SEN Code of practice and their placement is determined through the statutory assessment process or an annual review of their plan. If a school is named in a plan this will take priority over the Oversubscription Criteria although wherever possible the place will be offered within the Admission Number for the school.

The criteria will also be applied to late applications received after the closing date, if any places become available. These applications will be considered **together** with any applicants who have lodged a formal appeal or asked to remain on the waiting list. Late applications are not considered until all applications received on time have been dealt with.

For the purposes of Criterion B, a paired infant and junior school will be treated as one school.

The paired schools are:

Chandag Infant and Junior Schools, Moorlands Infant and Junior Schools, Oldfield Park Infant and Junior Schools, Paulton Infant and Junior Schools, St Saviour's Infant and Junior Schools, Twerton Infant and St Michael's Junior Church School, Widcombe Infant and Junior Schools.

Please note this applies to applications for Twerton Infant School only. St Michael's Junior Church School has its own individual admissions criteria details of which are published separately.

In year transfer applications should be submitted to the admission authority for the school.

[Back to Contents Page](#)

Community Schools

For Community & Voluntary Controlled schools, these criteria are determined by the LA.
In year transfer applications for these schools should be submitted to the Local Authority

Newbridge Primary

| | | | |
|-----------|--------|-----|----|
| Age Range | 4 - 11 | PAN | 60 |
|-----------|--------|-----|----|

Paulton Junior

| | | | |
|-----------|--------|-----|----|
| Age Range | 7 - 11 | PAN | 90 |
|-----------|--------|-----|----|

St Keyna Primary

| | | | |
|-----------|--------|-----|----|
| Age Range | 4 - 11 | PAN | 30 |
|-----------|--------|-----|----|

Twerton Infant

| | | | |
|-----------|-------|-----|----|
| Age Range | 4 - 7 | PAN | 60 |
|-----------|-------|-----|----|

Priority A - Children in Public care (Looked After Children) or a child who was previously looked after but immediately after being looked after became subject to an adoption, child arrangement, or special guardianship order including those who appear to the admission authority to have been in state care outside of England and ceased to be in state care as a result of being adopted. (See Notes on Page 15)

Priority B - (The 2 categories in this criterion will be given equal consideration).

- Children who live within a 1.5 mile radius* of the school and for whom there will be a sibling in attendance on the admission date at the preferred school.
- Children who live outside a 1.5 mile radius* of the school but it is their closest school and for whom there will be a sibling in attendance on the admission date at the preferred school.

Priority C - Children who live closest to the school as measured in a direct line.

In year transfer applications should be submitted to the Local Authority

***For Twerton Infant school**, the 1.5 mile radius will be measured from a midpoint between the paired schools. For Twerton Infant and St Michael's Junior Church School the midpoint is 29 Cleeve Green BA2 1SD.

Academy & Voluntary Aided Schools

For Academy schools, these criteria are determined by the Academy Trust and in the case of Voluntary Aided Schools, these criteria are determined by the governors.

In year transfer applications for these schools should be submitted to the school.

***From 01 September 2021**, the admission criteria for Looked After Children and Previously Looked After Children was updated to also include those who appear to the admission authority to have been in state care outside of England and ceased to be in state care as a result of being adopted. Please refer to the page 16 for further information.

Abbot Alphege Academy

| | | | | | |
|--------|---------|-----------|--------|-----|----|
| Status | Academy | Age Range | 4 - 11 | PAN | 30 |
|--------|---------|-----------|--------|-----|----|

Priority 1 – Children Looked After – Children who are in the care of a Local Authority or have previously been but immediately after being looked after became subject to an adoption, a child arrangement order, or special guardianship order. (*see additional notes)

Priority 2 – Children for whom there will be a sibling in attendance on the admission date at the school (in every case the child should be living in the same family unit at the same normal permanent address).

Priority 3 – For Reception only, children of teaching staff who have been in post for at least two years.

Priority 4 – Children living closest to the school as measured in a direct line from the address point of the school.

Bathampton Primary

| | | | | | |
|--------|---------|-----------|--------|-----|----|
| Status | Academy | Age Range | 4 - 11 | PAN | 30 |
|--------|---------|-----------|--------|-----|----|

Priority A - Children Looked After – Children who are in the care of the Local Authority or have previously been but immediately after being looked after are now formally adopted or subject to a residence/child arrangement order or special guardianship order. (*see additional notes)

Priority B - (The 2 categories in this criterion will be given equal consideration).

- Children who live within a 1.5 mile radius* of the school and for whom there will be a sibling in attendance on the admission date at the preferred school.
- Children who live outside a 1.5 mile radius* of the school but it is their closest school and for whom there will be a sibling in attendance on the admission date at the preferred school.

Priority C - Children who live closest to the school as measured in a direct line.

Batheaston Church School

| | | | | | |
|--------|---------|-----------|--------|-----|----|
| Status | Academy | Age Range | 4 - 11 | PAN | 30 |
|--------|---------|-----------|--------|-----|----|

Priority A - Children Looked After – Children who are in the care of the Local Authority or have previously been but immediately after being looked after are now formally adopted or subject to a residence/child arrangement order or special guardianship order. (*see additional notes)

Priority B - **(The 2 categories in this criterion will be given equal consideration).**

- Children who live within a 1.5 mile radius* of the school and for whom there will be a sibling in attendance on the admission date at the preferred school.
- Children who live outside a 1.5 mile radius* of the school but it is their closest school and for whom there will be a sibling in attendance on the admission date at the preferred school.

Priority C - Children who live closest to the school as measured in a direct line.

Bathford Church School

| | | | | | |
|--------|---------|-----------|--------|-----|----|
| Status | Academy | Age Range | 4 - 11 | PAN | 30 |
|--------|---------|-----------|--------|-----|----|

Priority A – Children Looked After – Children who are in the care of the Local Authority or have previously been but immediately after being looked after are now formally adopted or subject to a residence/child arrangement order or special guardianship order. (*see additional notes)

Priority B - Children who, at the time of application, have a sibling attending Bathford Church School.

Priority C - Children who live closest to the school as measured in a direct line.

Bathwick St. Mary Church School

| | | | | | |
|--------|---------|-----------|--------|-----|----|
| Status | Academy | Age Range | 4 - 11 | PAN | 30 |
|--------|---------|-----------|--------|-----|----|

Priority 1 - Children Looked After – Children who are in the care of the Local Authority or have previously been but immediately after being looked after are now formally adopted or subject to a residence/child arrangement order or special guardianship order. (*see additional notes)

Priority 2 - Children who, at the time of application, have a sibling attending Bathwick St Mary Church School.

Priority 3 - Children who, at the time of application live within the Bathwick Parishes and are eligible to receive a Pupil Premium. (SIF must be completed)

Priority 4 - Children of School Staff – A member of staff may apply for a reception place at the school for their child. (see full policy for definition). (SIF must be completed).

Priority 5 - Children who themselves, or whose parent(s)/carers regularly attend* a service of Christian worship at the Bathwick Parish Churches and live within the Bathwick Parishes (SIF must be completed). *See full policy for further details and to view the map of the Bathwick parish.

Priority 6 - Children who, at the time of application, live within the Bathwick Parishes.

Priority 7 - Children living closest to the school, as measured in a direct line.

Bishop Sutton Primary

| | | | | | |
|--------|---------|-----------|--------|-----|----|
| Status | Academy | Age Range | 4 - 11 | PAN | 30 |
|--------|---------|-----------|--------|-----|----|

Priority A - Children in Public care (Looked after Children) or a child who was previously looked after but immediately after being looked after became subject to an adoption, child arrangement order or special guardianship order. (*see additional notes)

Priority B - (The 2 categories in this criterion will be given equal consideration).

- Children who live within a 1.5 mile radius* of the school and for whom there will be a sibling in attendance on the admission date at the preferred school.
- Children who live outside a 1.5 mile radius* of the school but it is their closest school and for whom there will be a sibling in attendance on the admission date at the preferred school.

Priority C - Children who live closest to the school as measured in a direct line.

Cameley Primary

| | | | | | |
|--------|---------|-----------|--------|-----|----|
| Status | Academy | Age Range | 4 - 11 | PAN | 25 |
|--------|---------|-----------|--------|-----|----|

Priority 1 - Children Looked After – Children who are in the care of a Local Authority or have previously been but immediately after being looked after became subject to an adoption, a child arrangement order, or special guardianship order. (*see additional notes)

Priority 2 - Children for whom there will be a sibling in attendance on the admission date at the school (in every case the child should be living in the same family unit at the same normal permanent address)

Priority 3 - Children who are in attendance at the school's nursery school on the date of application.

Priority 4 - Children who live closest to the school as measured in a direct line from the address point.

Castle Primary

| | | | | | |
|--------|---------|-----------|--------|-----|----|
| Status | Academy | Age Range | 4 - 11 | PAN | 60 |
|--------|---------|-----------|--------|-----|----|

Priority 1 - Children Looked After – Children who are in the care of a Local Authority or have previously been but immediately after being looked after became subject to an adoption, a child arrangement order, or special guardianship order. (*see additional notes)

Priority 2 - Children who live within a 1.5 mile radius* of the school and for whom there will be a sibling in attendance on the admission date at the preferred school.

Priority 3 - Children who live outside a 1.5 mile radius* of the school but it is their closest school and for whom there will be a sibling in attendance on the admission date at the preferred school.

Priority 4 - Children who live closest to the school as measured in a direct line from the address point of the school.

Chandag Infant School

| | | | | | |
|--------|---------|-----------|-------|-----|----|
| Status | Academy | Age Range | 4 - 7 | PAN | 60 |
|--------|---------|-----------|-------|-----|----|

Priority A - Children in Public care (Looked after Children) or a child who was previously looked after but immediately after being looked after became subject to an adoption, child arrangement order or special guardianship order. (*see additional notes)

Priority B - (The 2 categories in this criterion will be given equal consideration).

- Children who live within a 1.5 mile radius* of the school and for whom there will be a sibling in attendance at either Chandag Infant or Chandag Junior School on the admission date at the preferred school.
- Children who live outside a 1.5 mile radius* of the school but it is their closest school and for whom there will be a sibling in attendance at either Chandag Infant or Chandag Junior on the admission date at the preferred school.

Priority C – Children of staff where that member of staff has been employed for two or more years at the time at which the application for admission to the Academy is made and/or where the member of staff is recruited to fill a vacant post for which there is a demonstrable skill shortage.

Priority D - Children who live closest to the school as measured in a direct line.

For Priority C applicants the Academy's SIF must also be completed and returned direct to the Academy by the closing date of 15th January 2023.

Chandag Junior

| | | | | | |
|--------|---------|-----------|--------|-----|----|
| Status | Academy | Age Range | 7 - 11 | PAN | 68 |
|--------|---------|-----------|--------|-----|----|

Priority A - Children in Public care (Looked after Children) or a child who was previously looked after but immediately after being looked after became subject to an adoption, child arrangement order or special guardianship order. (*see additional notes)

Priority B - (The 2 categories in this criterion will be given equal consideration).

- Children who live within a 1.5 mile radius* of the school and for whom there will be a sibling in attendance at either Chandag Infant or Chandag Junior School on the admission date at the preferred school.
- Children who live outside a 1.5 mile radius* of the school but it is their closest school and for whom there will be a sibling in attendance at either Chandag Infant or Chandag Junior on the admission date at the preferred school.

Priority C – Children of staff where that member of staff has been employed for two or more years at the time at which the application for admission to the Academy is made and/or where the member of staff is recruited to fill a vacant post for which there is a demonstrable skill shortage.

Priority D - Children who live closest to the school as measured in a direct line.

For Priority C applicants the Academy's SIF must also be completed and returned direct to the Academy by the closing date of 15th January 2023.

Chew Magna Primary

| | | | | | |
|--------|---------|-----------|--------|-----|----|
| Status | Academy | Age Range | 4 - 11 | PAN | 15 |
|--------|---------|-----------|--------|-----|----|

Priority 1 - Children Looked After – Children who are in the care of a Local Authority or have previously been but immediately after being looked after became subject to an adoption, a child arrangement order, or special guardianship order. (*see additional notes)

Priority 2 - Children for whom there will be a sibling who lives at the same address in attendance on the admission date at the preferred school.

Priority 3 - For Reception only: children of teaching staff who have been in post for at least 2 years

Priority 4 - Children living closest to the school as measured in a direct line from the address point of the school.

Chew Stoke Church School

| | | | | | |
|--------|---------|-----------|--------|-----|----|
| Status | Academy | Age Range | 4 - 11 | PAN | 28 |
|--------|---------|-----------|--------|-----|----|

Priority 1 - A 'looked after child' or a child who was previously looked after but immediately after being looked after became subject to an adoption, child arrangements, or special guardianship order. A looked after child is a child who, at the time of application, is (a) in the care of a local authority, or (b) being provided with accommodation by a local authority in the exercise of their social services functions (section 22 (1) of the Children Act 1989 applies. (*see additional notes)

Priority 2 - Children living in the Ecclesiastical parish of Chew Stoke with Nempnett Thrubwell who, at the time of admission, are eligible to receive a Pupil premium (In order to qualify against this criterion, the SIF must be completed)

Priority 3 - Children living within the Ecclesiastical Parish of Chew Stoke with Nempnett Thrubwell

Priority 4 - Children who have a sibling on the school roll at the time of admission

Priority 5 - Children who themselves, or whose parent(s) regularly attend a place of Christian worship. Governors expect regular church attendance to be at least once per month for the six month period immediately prior to application (in order to qualify against this criterion, the SIF must be completed)

Priority 6 - Children not satisfying a higher criterion

Note: A map showing the parish boundaries/catchment is kept at the school and is available to view on the school website as appendix (B) to these admission arrangements.

Clutton Primary School

| | | | | | |
|--------|---------|-----------|--------|-----|----|
| Status | Academy | Age Range | 4 - 11 | PAN | 25 |
|--------|---------|-----------|--------|-----|----|

Priority A - Children in Public care (Looked after Children) or a child who was previously looked after but immediately after being looked after became subject to an adoption, child arrangement order or special guardianship order. (*see additional notes)

Priority B - **(The 2 categories in this criterion will be given equal consideration).**

- Children who live within a 1.5 mile radius* of the school and for whom there will be a sibling in attendance on the admission date at the preferred school.
- Children who live outside a 1.5 mile radius* of the school but it is their closest school and for whom there will be a sibling in attendance on the admission date at the preferred school.

Priority C - Children who live closest to the school as measured in a direct line.

Combe Down C. of E. Primary

| | | | | | |
|--------|---------|-----------|--------|-----|----|
| Status | Academy | Age Range | 4 - 11 | PAN | 60 |
|--------|---------|-----------|--------|-----|----|

Priority A - Children in Public care (Looked after Children) or a child who was previously looked after but immediately after being looked after became subject to an adoption, child arrangement order or special guardianship order. (*see additional notes)

Priority B – Children for whom there will be a sibling in attendance on the admission date at the preferred school. (A sibling is defined as sharing at least one parent or legally adopted into the family, and in every case the child should be living in the same family unit at the same address).

Priority C - Children of staff at the school, in either or both of the following circumstances:

- a) Where the member of staff* has been employed by the school for two or more years at the time of application, and/or
- b) The member of staff is recruited to fill a vacant post for which there is a demonstrable skill shortage.

Staff parents who apply to the Local Authority for a Reception place must also complete SIF C available from the school website.

A member of staff is defined as full time and part time, teaching and non-teaching staff employed and paid through the Palladian Academy Trust's payroll.

Priority D - Children not satisfying a higher criterion - Proximity.

East Harptree C. of E. Primary

| | | | | | |
|--------|---------|-----------|--------|-----|----|
| Status | Academy | Age Range | 4 - 11 | PAN | 15 |
|--------|---------|-----------|--------|-----|----|

Priority A - Children in Public care (Looked after Children) or a child who was previously looked after but immediately after being looked after became subject to an adoption, child arrangement order or special guardianship order. (*see additional notes)

Priority B - **(The 2 categories in this criterion will be given equal consideration).**

- Children who live within a 1.5 mile radius* of the school and for whom there will be a sibling in attendance on the admission date at the preferred school.
- Children who live outside a 1.5 mile radius* of the school but it is their closest school and for whom there will be a sibling in attendance on the admission date at the preferred school.

Priority C - Children who live closest to the school as measured in a direct line.

Farmborough Church Primary

| | | | | | |
|--------|---------|-----------|--------|-----|----|
| Status | Academy | Age Range | 4 - 11 | PAN | 25 |
|--------|---------|-----------|--------|-----|----|

Priority 1 - Children Looked After – Children who are in the care of a Local Authority or have previously been but immediately after being looked after became subject to an adoption, a child arrangement order, or special guardianship order. (*see additional notes)

Priority 2 - Children who live within a 1.5 mile radius* of the school and for whom there will be a sibling in attendance on the admission date at the school (in every case the child should be living in the same family unit at the same normal permanent address)

Priority 3 - Children who live within a 1.5 mile radius of the school.

Priority 4 - Children who live outside a 1.5 mile radius of the school, for whom there will be a sibling in attendance on the admission date at the school (in every case the child should be living in the same family unit at the same normal permanent address)

Priority 5 - Children who live closest to the school as measured in a direct line from the address point of the school.

Farrington Gurney Church of England Primary School

| | | | | | |
|--------|---------|-----------|--------|-----|----|
| Status | Academy | Age Range | 4 - 11 | PAN | 15 |
|--------|---------|-----------|--------|-----|----|

Priority A - Children in Public care (Looked after Children) or a child who was previously looked after but immediately after being looked after became subject to an adoption, child arrangement order or special guardianship order. (*see additional notes)

Priority B - **(The 2 categories in this criterion will be given equal consideration).**

- Children who live within a 1.5 mile radius* of the school and for whom there will be a sibling in attendance on the admission date at the preferred school.
- Children who live outside a 1.5 mile radius* of the school but it is their closest school and for whom there will be a sibling in attendance on the admission date at the preferred school.

Priority C - Children who live closest to the school as measured in a direct line.

Freshford Church School

| | | | | | |
|--------|---------|-----------|--------|-----|----|
| Status | Academy | Age Range | 4 - 11 | PAN | 20 |
|--------|---------|-----------|--------|-----|----|

Priority A - Children Looked After – Children who are in the care of the Local Authority or have previously been but immediately after being looked after are now formally adopted or subject to a residence/child arrangement order or special guardianship order. (*see additional notes)

Priority B - Children who, at the time of application, have a sibling attending Freshford Church School.

Priority C - Children of School Staff - A member of staff may apply for a Reception place at the school for their child. They must have been

- a. employed at the school for at least two consecutive years at the time of application and/or
- b. recruited to fill a vacant post for which there is a demonstrable skill shortage. Members of staff are full time and part time, teaching and non-teaching staff employed at the school and who are paid through the school's payroll system.

Priority D - Children for whom Freshford Church School is their closest school as measured in a direct line from the Child's home address (e.g., the distance from a child's home address to Freshford church School is less than from the child's home address to any other school).

Priority E - Children living closest to Freshford Church School, as measured in a direct line.

High Littleton Church of England Primary

| | | | | | |
|--------|---------|-----------|--------|-----|----|
| Status | Academy | Age Range | 4 - 11 | PAN | 25 |
|--------|---------|-----------|--------|-----|----|

Priority A - Children in Public care (Looked After Children) or a child who was previously looked after but immediately after being looked after became subject to an adoption, child arrangement or special guardianship order. (*see additional notes)

Priority B - Children who live within The Parish of High Littleton and Hallatrow and for whom there will be a sibling in attendance on the admission date at the preferred school.

Priority C - Children who live within The Parish of High Littleton and Hallatrow.

Priority D - Children who live outside the Parish of High Littleton and Hallatrow and for whom there will be a sibling in attendance on the admission date at the preferred school.

Priority E - Children who live closest to the school as measured in a direct line.

Longvernal Primary School

| | | | | | |
|--------|---------|-----------|--------|-----|----|
| Status | Academy | Age Range | 4 - 11 | PAN | 30 |
|--------|---------|-----------|--------|-----|----|

Priority A - Children in Public care (Looked after Children) or a child who was previously looked after but immediately after being looked after became subject to an adoption, child arrangement order or special guardianship order. (*see additional notes)

Priority B - (The 2 categories in this criterion will be given equal consideration).

- Children who live within a 1.5 mile radius* of the school and for whom there will be a sibling in attendance on the admission date at the preferred school.
- Children who live outside a 1.5 mile radius* of the school but it is their closest school and for whom there will be a sibling in attendance on the admission date at the preferred school.

Priority C – Children who attend Longvernal Forest Nursery, which is part of Longvernal Primary School.

Priority D - Children who live closest to the school as measured in a direct line.

Marksbury C. of E. Primary

| | | | | | |
|--------|---------|-----------|--------|-----|----|
| Status | Academy | Age Range | 4 - 11 | PAN | 15 |
|--------|---------|-----------|--------|-----|----|

Priority 1 - Children Looked After – Children who are in the care of a Local Authority or have previously been but immediately after being looked after became subject to an adoption, a child arrangement order, or special guardianship order. (*see additional notes)

Priority 2 - Children who live within a 1.5 mile radius of the school and for whom there will be a sibling who lives at the same address in attendance on the admission date at the school.

Priority 3 - Children who live outside a 1.5 mile radius of the school but it is their closest school and for whom there will be a sibling who lives at the same address in attendance on the admission date at the school.

Priority 4 - Children who live closest to the school as measured in a direct line from the address point of the school.

Midsomer Norton Primary School

| | | | | | |
|--------|---------|-----------|--------|-----|----|
| Status | Academy | Age Range | 4 - 11 | PAN | 45 |
|--------|---------|-----------|--------|-----|----|

Priority A - Children in Public care (Looked after Children) or a child who was previously looked after but immediately after being looked after became subject to an adoption, child arrangement order or special guardianship order. (*see additional notes)

Priority B – Children who have a sibling attending Midsomer Norton Primary School at the time of application, who will still be on roll at the time of admission and who lives at the same address.

Priority C – Children who attend Sun Pre-School (the school's nursery).

Priority D - Children who live closest to the school as measured in a direct line.

Moorlands Infant

| | | | | | |
|--------|---------|-----------|-------|-----|----|
| Status | Academy | Age Range | 4 - 7 | PAN | 60 |
|--------|---------|-----------|-------|-----|----|

Priority 1 - Children Looked After – Children who are in the care of a Local Authority or have previously been but immediately after being looked after became subject to an adoption, a child arrangement order, or special guardianship order. (*see additional notes)

Priority 2 - Children who live within a 1.5 mile radius of the school and for whom there will be a sibling in attendance in either Moorlands Infant or Junior School on the admission date at the school.

Priority 3 - Children who live outside a 1.5 mile radius of the school but it is their closest school and for whom there will be a sibling in attendance in either Moorlands Infant or Junior School on the admission date at the preferred school.

Priority 4 - Children who live closest to the school as measured in a direct line from the address point of the school.

Moorlands Junior

| | | | | | |
|--------|---------|-----------|--------|-----|----|
| Status | Academy | Age Range | 7 - 11 | PAN | 60 |
|--------|---------|-----------|--------|-----|----|

Priority 1 - Children Looked After – Children who are in the care of a Local Authority or have previously been but immediately after being looked after became subject to an adoption, a child arrangement order, or special guardianship order. (*see additional notes)

Priority 2 - Children for whom there will be a sibling in attendance on the admission date at either Moorlands Infant or Junior School.

Priority 3 - Children transferring from Moorlands Infant School without a sibling in attendance on the admission date at Moorlands Infant or the Junior School.

Priority 4 - Children who live closest to the Junior School as measured in a direct line from the address point of the school.

Mulberry Park Educate Together Primary

| | | | | | |
|--------|---------|-----------|--------|-----|----|
| Status | Academy | Age Range | 4 - 11 | PAN | 30 |
|--------|---------|-----------|--------|-----|----|

Priority 1 - Children in care (i.e., children who are in the care of local authorities as defined by Section 22 of the Children Act 1989). This definition will also include 'previously looked after children'. A previously looked after child is a child who met the above definition but ceased to do so because they were adopted (under the Adoption Act 1976 or Adoption and Children Act 2002) or became the subject of a child arrangement order or special guardianship order (under the Children Act 1989) (*see additional notes)

Priority 2 – Children with brothers/sisters attending the school at the time of application who will still be on roll on the date of the proposed admission. Brothers/sisters must live at the same address as the child for whom the application is being made. This includes half, step and foster brothers/sisters who live at the same address.

Priority 3 – Those living closest to the school as measured in a direct line from the home address to the school.

Norton Hill Primary

| | | | | | |
|--------|---------|-----------|--------|-----|----|
| Status | Academy | Age Range | 4 - 11 | PAN | 30 |
|--------|---------|-----------|--------|-----|----|

Priority A - Looked after Children and children who were previously looked after but immediately after being looked after became subject to an adoption, child arrangement order or special guardianship order. (*see additional notes)

Priority B - (The 2 categories in this criterion will be given equal consideration).

- Children who live within a 1.5 mile radius* of the school and for whom there will be a sibling in attendance on the admission date at the preferred school.
- Children who live outside a 1.5 mile radius* of the school but it is their closest school and for whom there will be a sibling in attendance on the admission date at the preferred school.

Priority C – Children who attend Curiosity Corner Nursery, which is a part of Norton Hill Primary School.

Priority D – Children living closest to the school in a direct line.

Oldfield Park Infant

| | | | | | |
|--------|---------|-----------|-------|-----|----|
| Status | Academy | Age Range | 4 - 7 | PAN | 60 |
|--------|---------|-----------|-------|-----|----|

Priority A - Children in Public care (Looked after Children) or a child who was previously looked after but immediately after being looked after became subject to an adoption, child arrangement order or special guardianship order. (*see additional notes)

Priority B - (The 2 categories in this criterion will be given equal consideration).

- Children who live within a 1.5 mile radius* of the school and for whom there will be a sibling in attendance on the admission date at the preferred school.
- Children who live outside a 1.5 mile radius* of the school but it is their closest school and for whom there will be a sibling in attendance on the admission date at the preferred school.

Priority C - Children for whom are closest to the midpoint* as measured in a direct line.

*For Oldfield Park Infant and Oldfield Park Junior Schools the 1.5 mile radius will be measured from a midpoint between the paired schools. The midpoint is 29 Maybrick Road, BA2 3PU.

Oldfield Park Junior

| | | | | | |
|--------|---------|-----------|--------|-----|----|
| Status | Academy | Age Range | 7 - 11 | PAN | 60 |
|--------|---------|-----------|--------|-----|----|

Priority A - Children in Public care (Looked after Children) or a child who was previously looked after but immediately after being looked after became subject to an adoption, child arrangement order or special guardianship order. (*see additional notes)

Priority B - (The 2 categories in this criterion will be given equal consideration).

- Children who live within a 1.5 mile radius* of the school and for whom there will be a sibling in attendance on the admission date at the preferred school.
- Children who live outside a 1.5 mile radius* of the school but it is their closest school and for whom there will be a sibling in attendance on the admission date at the preferred school.

Priority C - Children for whom are closest to the midpoint* as measured in a direct line.

* For Oldfield Park Infant and Oldfield Park Junior Schools the 1.5 mile radius will be measured from a midpoint between the paired schools. The midpoint is 29 Maybrick Road, BA2 3PU.

Paulton Infant

| | | | | | |
|--------|---------|-----------|-------|-----|----|
| Status | Academy | Age Range | 4 - 7 | PAN | 90 |
|--------|---------|-----------|-------|-----|----|

Priority 1 - Children Looked After – Children who are in the care of a Local Authority or have previously been but immediately after being looked after became subject to an adoption, a child arrangement order, or special guardianship order. (*see additional notes)

Priority 2 - Children for whom there will be a sibling in attendance on the admission date at the school.

Priority 3 - Children for whom there will be a sibling in attendance at Paulton Junior School on the admission date at the school.

Priority 4 - Children who live closest to the school as measured in a direct line from the address point of the school.

Peasedown St. John Primary

| | | | | | |
|--------|---------|-----------|--------|-----|----|
| Status | Academy | Age Range | 4 - 11 | PAN | 90 |
|--------|---------|-----------|--------|-----|----|

Priority A - Children in Public care (Looked after Children) or a child who was previously looked after but immediately after being looked after became subject to an adoption, child arrangement order or special guardianship order. (*see additional notes)

Priority B - **(The 2 categories in this criterion will be given equal consideration).**

- Children who live within a 1.5 mile radius* of the school and for whom there will be a sibling in attendance on the admission date at the preferred school.
- Children who live outside a 1.5 mile radius* of the school but it is their closest school and for whom there will be a sibling in attendance on the admission date at the preferred school.

Priority C - Children who live closest to the school, as measured in a direct line.

Pensford Primary

| | | | | | |
|--------|---------|-----------|--------|-----|----|
| Status | Academy | Age Range | 4 - 11 | PAN | 15 |
|--------|---------|-----------|--------|-----|----|

Priority 1 - Children Looked After – Children who are in the care of a Local Authority or have previously been but immediately after being looked after became subject to an adoption, a child arrangement order, or special guardianship order. (*see additional notes)

Priority 2 - Children who live within a 1.5 mile radius of the school and for whom there will be a sibling who lives at the same address in attendance on the admission date at the preferred school.

Priority 3 - Children who live within a 1.5 mile radius of the school.

Priority 4 - Children who live outside a 1.5 mile radius of the school and for whom there will be a sibling who lives at the same address in attendance on the admission date at the preferred school (with priority being given to children living closest to the school as measured in a direct line from the address point of the school).

Priority 5 - For Reception only, children of teaching staff who have been in post for at least 2 years.

Priority 6 - Children who live closest to the school as measured in a direct line from the address point of the school.

Roundhill Primary

| | | | | | |
|--------|---------|-----------|--------|-----|----|
| Status | Academy | Age Range | 4 - 11 | PAN | 60 |
|--------|---------|-----------|--------|-----|----|

Priority 1 - Children Looked After – Children who are in the care of a Local Authority or have previously been but immediately after being looked after became subject to an adoption, a child arrangement order, or special guardianship order. (*see additional notes)

Priority 2 - Children for whom there will be a sibling in attendance on the admission date at the school (in every case the child should be living in the same family unit at the same normal permanent address.

Priority 3 - For Reception only, children of teaching staff who have been in post for at least 2 years.

Priority 4 - Children who live closest to the school as measured in a direct line from the address point of the school.

St Andrew's Church School

| | | | | | |
|--------|---------|-----------|--------|-----|----|
| Status | Academy | Age Range | 4 - 11 | PAN | 30 |
|--------|---------|-----------|--------|-----|----|

Priority 1 - Children Looked After – Children who are in the care of the Local Authority or have previously been but immediately after being looked after are now formally adopted or subject to a residence/child arrangement order or special guardianship order. (*see additional notes).

Priority 2 - Children who, at the time of application, have a sibling attending St Andrew's Church School.

Priority 3 - Children who at the time of application are attending St Andrew's Nursery regularly for at least 2 sessions per week*.

Priority 4 - Children who live within the City of Bath and the family are 'practising' members of any Church. 'Practising' is defined as attendance at church at least once a month for not less than 6 months immediately prior to the application closing date. (SIF must be completed)

Priority 5 - Children living closest to the school, as measured in a direct line.

The SIF which is available on the school website or from the school office must be completed and returned to school by 15 January 2023.

St. John's Catholic Primary

| | | | | | |
|--------|----|-----------|--------|-----|----|
| Status | VA | Age Range | 4 - 11 | PAN | 45 |
|--------|----|-----------|--------|-----|----|

Within each of the categories listed below, priority will be given to children who will have a brother or sister at the school at the time of enrolment.

Priority 1 – Catholic looked after and previously looked after children (*see additional notes)

Priority 2 – Catholic children who are resident in the school's designated parishes St John's, Our Lady and St Alphege, Ss Peter and Paul, Bath and St Dunstan's, Keynsham. (See additional notes in full policy)

Priority 3 – Other Catholic children. (See additional notes in full policy)

Priority 4 – Other looked after and previously looked after children. (See additional notes)

Priority 5 – Children who are a Catechumen (See additional notes in full policy)

Priority 6 – Any other children.

A SIF needs to be completed for categories 1, 2, 3 and 5 and returned directly to the school by the closing date 15 January 2023.

Where children have identical ranking, priority within each of the categories 1, 2, 3 and 5 will be determined by random allocation. Priority within categories 4 & 6 will be given to those living closest to the school in a direct line. (see additional notes in full policy)

St John's Church of England Primary School (Keynsham)

| | | | | | |
|--------|---------|-----------|--------|-----|----|
| Status | Academy | Age Range | 4 - 11 | PAN | 30 |
|--------|---------|-----------|--------|-----|----|

Priority A - Children in Public care (Looked after Children) or a child who was previously looked after but immediately after being looked after became subject to an adoption, child arrangement order or special guardianship order. (*see additional notes)

Priority B - (The 2 categories in this criterion will be given equal consideration).

- Children who live within a 1.5 mile radius* of the Academy and for whom there will be a sibling in attendance on the admission date at the preferred Academy.
- Children who live outside a 1.5 mile radius* of the Academy but it is their closest school and for whom there will be a sibling in attendance on the admission date at the preferred Academy.

Priority C - Children of staff where the member of staff has been employed for two or more years at the time at which the application for admission to the Academy is made, and/or where the member of staff is recruited to fill a vacant post for which there is a demonstrable skill shortage.

Priority D - Children who live closest to the Academy as measured in a direct line.

For Priority C applicants the Academy's SIF must also be completed and returned direct to the Academy by the closing date of 15th January 2023.

St. John's C. of E. Primary (MSN)

| | | | | | |
|--------|---------|-----------|--------|-----|----|
| Status | Academy | Age Range | 4 - 11 | PAN | 60 |
|--------|---------|-----------|--------|-----|----|

Priority 1 – A 'looked after child' or a child who was previously looked after but immediately after being looked after became subject to an adoption, child arrangements, or special guardianship order. (*see additional notes)

Priority 2 – (The 2 categories in this criterion will be given equal consideration).

- Children who have a sibling attending St John's C of E Primary School at the time of application, who will still be on roll at the time of admission and who lives at the same home address.
- Children eligible to receive a Pupil Premium or Service Premium at the time of application.

Priority 3 – Children who attend Next Steps Nursery which is part of St John's Primary School.

Priority 4 – Children of permanent Staff who have been employed at St John's C of E Primary School on a permanent contract for at least two years prior to the submission of an admission application, or children of a newly appointed teacher, appointed to satisfy a demonstrable skills shortage

Priority 5 – Children who live closest to the school as measured in a direct line.

The SIF which is available on the school website or from the school office **must** be completed and returned directly to the school to confirm compliance with criterion 2.

St. Julian's Church Primary School

| | | | | | |
|--------|---------|-----------|--------|-----|----|
| Status | Academy | Age Range | 4 - 11 | PAN | 16 |
|--------|---------|-----------|--------|-----|----|

Priority 1 – A 'looked after child' or a child who was previously looked after but immediately after being looked after became subject to an adoption, child arrangements, or special guardianship order. (*see additional notes)

Priority 2 – Children who at the time of application have an older sibling attending St Julian's Church School and who will still be on roll at the time of admission and who lives at the same home address.

Priority 3 - Children who at the time of application are eligible to receive a Pupil Premium or Service Premium Grant.

Priority 4 –Children of permanent members of staff.

Priority 5 – Children not satisfying a higher criterion

The SIF applies for criterion 1, 2, 3 or 4 and is available on the school website and must be completed and returned directly to the school.

St Martin's Garden Primary

| | | | | | |
|--------|---------|-----------|--------|-----|----|
| Status | Academy | Age Range | 4 - 11 | PAN | 30 |
|--------|---------|-----------|--------|-----|----|

Priority A – Children in Public Care (looked after children and previously looked after children. Previously looked after children are children who were looked after, but ceased to be so because they were adopted, became subject to a Child Arrangement order or special guardianship order). (*see additional notes)

Priority B – Children in receipt of the mobility component of the Disability Living Allowance in respect of a physical disability and who live within the Greater Bath Consortium (GBC).

Priority C – Children whose older sibling will be attending the school on the admission date.

Priority D – Children of staff at the school, in either or both of the following circumstances:

- a) where the member of staff has been employed at the school for two or more years at the time at which the application for admission to the school is made, and/or
- b) the member of staff is recruited to fill a vacant post for which there is a demonstrable skill shortage.

Priority E - Those children who live nearest to the school, as measured in a direct line between the home address and the school. This rule would still be applied strictly to both children living within Bath and North East Somerset and those from neighbouring authorities.

To consider applications under Priority B of the admissions criteria documentary evidence confirming receipt of the mobility component of the Disability Living Allowance in respect of a physical disability must be sent to the school by the closing date of 15 January 2023.

St. Mary's Catholic Primary

| | | | | | |
|--------|----|-----------|--------|-----|----|
| Status | VA | Age Range | 4 - 11 | PAN | 30 |
|--------|----|-----------|--------|-----|----|

Within each of the categories listed below, priority will be given to children who will have a brother or sister at the school at the time of enrolment.

Priority 1 – Catholic looked after and previously looked after children (*see additional notes)

Priority 2 – Catholic children who are resident in the school's designated parishes Our Lady, Help of Christian's (St Mary's), Bath and The Good Shepherd, Batheaston. (see additional notes & parish map available to view at the school or on the school website)

Priority 3 – Other Catholic children. (see additional notes)

Priority 4 – Other looked after and previously looked after children. (*see additional notes)

Priority 5 – Children who are a Catechumen (see additional notes)

Priority 6 – Any other children.

A SIF needs to be completed for categories 1, 2, 3 and 5 and returned directly to the school by the closing date 15 January 2023. Where children have identical ranking, priority within each category will be determined by random allocation. (see additional notes in full policy).

St Mary's C. of E Primary (Timsbury)

| | | | | | |
|--------|---------|-----------|--------|-----|----|
| Status | Academy | Age Range | 4 - 11 | PAN | 30 |
|--------|---------|-----------|--------|-----|----|

Priority 1 - A 'looked after child' or a child who was previously looked after but immediately after being looked after became subject to an adoption, child arrangements, or special guardianship order. A looked after child is a child who, at the time of application, is (a) in the care of a local authority, or (b) being provided with accommodation by a local authority in the exercise of their social services functions (section 22 (1) of the Children Act 1989 applies) (*see additional notes)

Priority 2 - Children who have a sibling attending St Mary's C of E Primary School at the time of application, who will still be on roll at the time of admission and who lives at the same home address.

Priority 3 - Children of permanent staff.

Priority 4 – Children eligible to receive a pupil or service premium at the time of application.

Priority 5 - Children not satisfying a higher criterion.

The SIF applies for criterion 4 and is available on the school website and must be completed and returned directly to the school.

St Mary's Primary (Writhlington)

| | | | | | |
|--------|---------|-----------|--------|-----|----|
| Status | Academy | Age Range | 4 - 11 | PAN | 30 |
|--------|---------|-----------|--------|-----|----|

Priority 1 - Children Looked After – Children who are in the care of a Local Authority or have previously been but immediately after being looked after became subject to an adoption, a child arrangement order, or special guardianship order. (*see additional notes)

Priority 2 - Children who live within a 1.5 mile radius of the school and for whom there will be a sibling who lives at the same address in attendance on the admission date at the preferred school.

Priority 3 – Children who live outside a 1.5 mile radius of the school but it is their closest school and for whom there will be a sibling who lives at the same address in attendance on the admission date at the preferred school.

Priority 4 - Children for whom there will be a sibling in attendance on the admission date at the school (see notes for sibling definition) and who do not fall within categories 2 and 3.

Priority 5 - Children living closest to the school as measured in a direct line from the address point of the school.

St. Michael's Junior Church School

| | | | | | |
|--------|---------|-----------|--------|-----|----|
| Status | Academy | Age Range | 7 - 11 | PAN | 60 |
|--------|---------|-----------|--------|-----|----|

Priority 1 - Children Looked After – Children who are in the care of the Local Authority or have previously been but immediately after being looked after are now formally adopted or subject to a residence/child arrangement order or special guardianship order. (*see additional notes).

Priority 2 – Children who, at the time of application, have a sibling attending St Michael's Junior Church School.

Priority 3 - Children living closest to the school, as measured in a direct line.

St Nicholas' Church School

| | | | | | |
|--------|---------|-----------|--------|-----|----|
| Status | Academy | Age Range | 4 - 11 | PAN | 60 |
|--------|---------|-----------|--------|-----|----|

Priority A - Children Looked After – Children who are in the care of the Local Authority or have previously been but immediately after being looked after are now formally adopted or subject to a residence/child arrangement order or special guardianship order. (*see additional notes)

Priority B - (The 2 categories in this criterion will be given equal consideration).

- Children who live within a 1.5 mile radius* of the school and for whom there will be a sibling in attendance on the admission date at the preferred school.
- Children who live outside a 1.5 mile radius* of the school but it is their closest school and for whom there will be a sibling in attendance on the admission date at the preferred school.

Priority C - Children who live closest to the school as measured in a direct line.

St. Philip's Primary

| | | | | | |
|--------|---------|-----------|--------|-----|----|
| Status | Academy | Age Range | 4 - 11 | PAN | 40 |
|--------|---------|-----------|--------|-----|----|

Priority A – A 'looked after child' or a child who was previously looked after but immediately after being looked after became subject to an adoption, child arrangements, or special guardianship order. A looked after child is a child who, at the time of application, is (a) in the care of a local authority, or (b) being provided with accommodation by a local authority in the exercise of their social services functions (section 22 (1) of the Children Act 1989 applies). (*see additional notes)

Priority B - Children for whom there will be a sibling in attendance on the admission date at the preferred school. (A sibling is defined as sharing at least one parent or legally adopted into the family, and in every case the child should be living in the same family unit at the same address).

Priority C – A member of staff may apply for a Reception place at the school for their child in either or both of the following circumstances:

- a) where the member of staff has been employed at the school for two or more years at the time at which the application for admission to the school is made, and/or
- b) the member of staff is recruited to fill a vacant post for which there is a demonstrable skill shortage.

They must have been employed at the school for at least two full years at the time of application. Members of staff are full time or part time, either teaching or non-teaching staff employed at the school and who are paid through the school's payroll system.

Staff parents who apply to the Local Authority for a Reception place must also complete SIF C available from the school website.

Priority D - Children not satisfying a higher criterion (Proximity)

St. Saviour's Infant Church School

| | | | | | |
|--------|---------|-----------|-------|-----|----|
| Status | Academy | Age Range | 4 - 7 | PAN | 60 |
|--------|---------|-----------|-------|-----|----|

Priority 1 - Children Looked After – Children who are in the care of the Local Authority or have previously been but immediately after being looked after are now formally adopted or subject to a residence/child arrangement order or special guardianship order. (*see additional notes)

Priority 2 - Children who, at the time of application, have a sibling attending St Saviour's Infant Church School or St Saviour's Junior Church School.

Priority 3 - Children of School Staff - A member of staff may apply for a Reception place at the school for their child. They must have been

- a) employed at the school for at least two consecutive years at the time of application and/or
- b) recruited to fill a vacant post for which there is a demonstrable skill shortage. Members of staff are full time and part time, teaching and non-teaching staff employed at the school and who are paid through the school's payroll system.

Priority 4 - Children living closest to the school, as measured in a direct line.

St. Saviour's Junior Church School

| | | | | | |
|--------|---------|-----------|--------|-----|----|
| Status | Academy | Age Range | 7 - 11 | PAN | 60 |
|--------|---------|-----------|--------|-----|----|

Priority 1 – Children Looked After – Children who are in the care of the Local Authority or have previously been but immediately after being looked after are now formally adopted or subject to a residence/child arrangement order or special guardianship order. (*see additional notes)

Priority 2 - Children who, at the time of application, have a sibling attending St Saviour's Infant Church School or St Saviour's Junior Church School.

Priority 3 - Children who, at the time of application attend St Saviour's Infant Church School, who do not have a sibling at St Saviour's Infant Church School or St Saviour's Junior Church School.

Priority 4 - Children of School Staff - A member of staff may apply for a Year 3 place at the school for their child. They must have been

- a) employed at the school for at least two consecutive years at the time of application and/or
- b) recruited to fill a vacant post for which there is a demonstrable skill shortage. Members of staff are full time and part time, teaching and non-teaching staff employed at the school and who are paid through the school's payroll system.

Priority 5 - Children living closest to the school, as measured in a direct line.

St Stephen's Church School

| | | | | | |
|--------|---------|-----------|--------|-----|----|
| Status | Academy | Age Range | 4 - 11 | PAN | 60 |
|--------|---------|-----------|--------|-----|----|

Priority 1 - Children Looked After – Children who are in the care of the Local Authority or have previously been but immediately after being looked after are now formally adopted or subject to a residence/child arrangement order or special guardianship order. (*see additional notes)

Priority 2 - Children who, at the time of application, have a sibling attending St Stephen's Church School.

Priority 3 - Children living closest to the school, as measured in a direct line.

Salford Primary School

| | | | | | |
|--------|---------|-----------|--------|-----|----|
| Status | Academy | Age Range | 4 - 11 | PAN | 60 |
|--------|---------|-----------|--------|-----|----|

Priority A - Children in Public care [Looked after Children] or a child who was previously looked after but immediately after being looked after became subject to an adoption, child arrangement order, or special guardianship order. (*see additional notes)

Priority B - The 2 categories in this criterion will be given equal consideration:

- Children who live within a 1.5 mile radius* of the school and for whom there will be a sibling in attendance on the admission date at the preferred school.
- Children who live outside a 1.5 mile radius* of the school but it is their closest school and for whom there will be a sibling in attendance on the admission date at the preferred school.

Priority C - Children of staff of Salford Primary School, where that member of staff has been employed for two or more years at the time at which the application for admission to the Academy is made, and/or where the member of staff is recruited to fill a vacant post for which there is a demonstrable skill shortage.

Priority D - Children who live closest to the school as measured in a direct line.

For Priority C applicants the Academy's SIF must also be completed and returned direct to the Academy by the closing date of 15 January 2023.

Shoscombe Church School

| | | | | | |
|--------|---------|-----------|--------|-----|----|
| Status | Academy | Age Range | 4 - 11 | PAN | 17 |
|--------|---------|-----------|--------|-----|----|

Priority 1 - A 'looked after child' or a child who was previously looked after by a local authority, but immediately after being looked after, became subject to an adoption, child arrangements, or special guardianship order. A looked after child is a child who, at the time of application, is (a) in the care of a local authority, or (b) being provided with accommodation by a local authority in the exercise of their social services functions (section 22 (1) of the Children Act 1989 applies). (*see additional notes)

Priority 2 - Children who at the time of application have an older sibling at Shoscombe Church School who will still be on roll at the time of admission and who live at the same address.

Priority 3 - Children who at the time of application are eligible to receive a Pupil Premium or a Service Premium grant.

Priority 4 - Children of permanent members of staff

Priority 5 - Children not satisfying a higher criterion.

A SIF is required for criterion 1, 2, 3 or 4 and is available on the school website and must be completed and returned directly to the school.

Somerdale Educate Together Primary

| | | | | | |
|--------|---------|-----------|--------|-----|----|
| Status | Academy | Age Range | 4 - 11 | PAN | 30 |
|--------|---------|-----------|--------|-----|----|

Priority 1 - Children in care (i.e. children who are in the care of local authorities as defined by Section 22 of the Children Act 1989). This definition will also include 'previously looked after children'. A previously looked after child is a child who met the above definition but ceased to do so because they were adopted (under the Adoption Act 1976 or Adoption and Children Act 2002) or became the subject of a child arrangement order or special guardianship order (under the Children Act 1989) (*see additional notes)

Priority 2 - Children with brothers/sisters attending the school at the time of application who will still be on roll on the date of the proposed admission. Brothers/sisters must live at the same address as the child for whom the application is being made. This includes half, step and foster brothers/sisters who live at the same address.

Priority 3 - Those living closest to the school as measured in a direct line from the home address to the school.

Stanton Drew Primary

| | | | | | |
|--------|---------|-----------|--------|-----|----|
| Status | Academy | Age Range | 4 - 11 | PAN | 10 |
|--------|---------|-----------|--------|-----|----|

Priority A - Children in Public care (Looked after Children) or a child who was previously looked after but immediately after being looked after became subject to an adoption, child arrangement order or special guardianship order. (*see additional notes)

Priority B - (The 2 categories in this criterion will be given equal consideration).

- Children who live within a 1.5 mile radius* of the school and for whom there will be a sibling in attendance on the admission date at the preferred school.
- Children who live outside a 1.5 mile radius* of the school but it is their closest school and for whom there will be a sibling in attendance on the admission date at the preferred school.

Priority C - Children who live closest to the school as measured in a direct line.

Swainswick Church School

| | | | | | |
|--------|---------|-----------|--------|-----|----|
| Status | Academy | Age Range | 4 - 11 | PAN | 12 |
|--------|---------|-----------|--------|-----|----|

Priority 1 – Children Looked After – Children who are in the care of the Local Authority or have previously been but immediately after being looked after are now formally adopted or subject to a residence/child arrangement order or special guardianship order. (*see additional notes)

Priority 2 – Children who, at the time of application, have a sibling attending Swainswick Church School.

Priority 3 – Children of School Staff - A member of staff may apply for a Reception place at the school for their child. They must have been

- a) employed at the school for at least two consecutive years at the time of application and/or
- b) recruited to fill a vacant post for which there is a demonstrable skill shortage. Members of staff are full time and part time, teaching and non-teaching staff employed at the school and who are paid through the school's payroll system.

Priority 4 – Children living closest to the school, as measured in a direct line.

Trinity Church School

| | | | | | |
|--------|---------|-----------|--------|-----|----|
| Status | Academy | Age Range | 4 - 11 | PAN | 30 |
|--------|---------|-----------|--------|-----|----|

Priority 1 - A 'looked after child' or a child who was previously looked after but immediately after being looked after became subject to an adoption, child arrangements, or special guardianship order. A looked after child is a child who, at the time of application, is (a) in the care of a local authority, or (b) being provided with accommodation by a local authority in the exercise of their social services functions (section 22 (1) of the Children Act 1989 applies) (*see additional notes).

Priority 2 - Children who have a sibling attending Trinity Church School at the time of application, who will still be on roll at the time of admission and who lives at the same home address.

Priority 3 - Children of permanent staff.

Priority 4 - Children who attend Acorns Nursery at Trinity Church School at the time of application.

Priority 5 - Children eligible to receive a pupil or service premium at the time of application.

Priority 6 - Children not satisfying a higher criterion

A SIF is provided on the school website and is required for criterion 5. The SIF must be completed and returned directly to the school by 15 January 2023.

Two Rivers C. of E. Primary

| | | | | | |
|--------|---------|-----------|--------|-----|----|
| Status | Academy | Age Range | 4 - 11 | PAN | 60 |
|--------|---------|-----------|--------|-----|----|

Priority 1 - Looked after children) and children who were previously looked after but immediately after being looked after became subject to an adoption, child arrangement order or special guardianship order. (*see additional notes)

Priority 2 – Children for whom there will be a sibling in attendance on the admission date at the preferred school. Brothers/sisters must be living at the same address (Home address) as the child for whom the application is being made.

Priority 3 - Children of staff at Two Rivers C of E Primary School where the member of staff is recruited to fill a vacant post for which there is a demonstrable skill shortage.

Priority 4 – Other children.

For Priority 3 applicants the Academy's SIF must also be completed and returned direct to the Academy by the closing date of 15 January 2023.

Ubley C. of E. Primary

| | | | | | |
|--------|---------|-----------|--------|-----|----|
| Status | Academy | Age Range | 4 - 11 | PAN | 15 |
|--------|---------|-----------|--------|-----|----|

Priority A - Children in Public care (Looked after Children) or a child who was previously looked after but immediately after being looked after became subject to an adoption, child arrangement order or special guardianship order. (*see additional notes)

Priority B - (The 2 categories in this criterion will be given equal consideration).

- Children who live within a 1.5 mile radius* of the school and for whom there will be a sibling in attendance on the admission date at the preferred school.
- Children who live outside a 1.5 mile radius* of the school but it is their closest school and for whom there will be a sibling in attendance on the admission date at the preferred school.

Priority C - Children who live closest to the school as measured in a direct line.

Welton Primary School

| | | | | | |
|--------|---------|-----------|--------|-----|----|
| Status | Academy | Age Range | 4 - 11 | PAN | 28 |
|--------|---------|-----------|--------|-----|----|

Priority A - Children in Public care [Looked after Children] or a child who was previously looked after but immediately after being looked after became subject to an adoption, child arrangement order, or special guardianship order. (*see additional notes)

Priority B - The 2 categories in this criterion will be given equal consideration

- Children who live within a 1.5 mile radius* of the school and for whom there will be a sibling in attendance on the admission date at the preferred school.
- Children who live outside a 1.5 mile radius* of the school but it is their closest school and for whom there will be a sibling in attendance on the admission date at the preferred school.

Priority C - Children who attend the Nursery provision on the Welton Primary School site.

Priority D - Children who live closest to the school as measured in a direct line.

Westfield Primary School

| | | | | | |
|--------|---------|-----------|--------|-----|----|
| Status | Academy | Age Range | 4 - 11 | PAN | 60 |
|--------|---------|-----------|--------|-----|----|

Priority A - Children in Public care [Looked after Children] or a child who was previously looked after but immediately after being looked after became subject to an adoption, child arrangement order, or special guardianship order. (*see additional notes)

Priority B - The 2 categories in this criterion will be given equal consideration

- Children who live within a 1.5 mile radius* of the school and for whom there will be a sibling in attendance on the admission date at the preferred school.
- Children who live outside a 1.5 mile radius* of the school but it is their closest school and for whom there will be a sibling in attendance on the admission date at the preferred school.

Priority C - Children who live closest to the school as measured in a direct line.

Weston All Saints CE Primary

| | | | | | |
|--------|---------|-----------|--------|-----|----|
| Status | Academy | Age Range | 4 - 11 | PAN | 90 |
|--------|---------|-----------|--------|-----|----|

Priority 1 - Children Looked After – Children who are in the care of a Local Authority or have previously been but immediately after being looked after became subject to an adoption, a child arrangement order, or special guardianship order. (*see additional notes)

Priority 2 - Children for whom there will be a sibling in attendance on the admission date at the school (the child should be living in the same family unit at the same normal permanent address)

Priority 3 - For Reception only, children of teaching staff who have been in post for at least 2 years.

Priority 4 - Children living closest to the school as measured in a direct line from the address point of the school.

Whitchurch Primary

| | | | | | |
|--------|---------|-----------|--------|-----|----|
| Status | Academy | Age Range | 4 - 11 | PAN | 45 |
|--------|---------|-----------|--------|-----|----|

Priority A - Children in Public care (Looked after Children) or a child who was previously looked after but immediately after being looked after became subject to an adoption, child arrangement order or special guardianship order. (*see additional notes)

Priority B - **(The 2 categories in this criterion will be given equal consideration).**

- Children who live within a 1.5 mile radius* of the school and for whom there will be a sibling in attendance on the admission date at the preferred school.
- Children who live outside a 1.5 mile radius* of the school but it is their closest school and for whom there will be a sibling in attendance on the admission date at the preferred school.

Priority C - Children who live closest to the school as measured in a direct line.

Widcombe Infant

| | | | | | |
|--------|---------|-----------|-------|-----|----|
| Status | Academy | Age Range | 4 - 7 | PAN | 60 |
|--------|---------|-----------|-------|-----|----|

Priority 1 - A 'looked after child' or a child who was previously looked after but immediately after being looked after became subject to an adoption, child arrangements, or special guardianship order. (*see additional notes)

Priority 2 - Children with a sibling attending Widcombe Infant School or Widcombe Junior School at the time the admission application is submitted.

Priority 3 - Children of staff (full time and part time, teaching and non-teaching staff employed and paid through the Palladian Academy Trust's payroll) who have been employed at Widcombe Infant School on a permanent contract for at least two years prior to the submission of an admission application, or children of a newly recruited member of staff appointed to satisfy a demonstrable skill shortage.

Priority 4 - Children not satisfying a higher criterion and living closest to Widcombe Infant School by straight line from the address point of the child's home address to the address point of the school as defined by the Local Land & Property Gazetteer (LLPG).

A SIF will be available from the school and will need to be completed for Category 3 and returned directly to the school by 15 January 2023.

Widcombe C. of E. Junior

| | | | | | |
|--------|---------|-----------|--------|-----|----|
| Status | Academy | Age Range | 7 - 11 | PAN | 60 |
|--------|---------|-----------|--------|-----|----|

Priority 1 - A 'looked after child' or a child who was previously looked after but immediately after being looked after became subject to an adoption, child arrangements, or special guardianship order. A looked after child is a child who, at the time of application, is (a) in the care of a local authority, or (b) being provided with accommodation by a local authority in the exercise of their social services functions (section 22 (1) of the Children Act 1989 applies). (*see additional notes)

Priority 2 - Children attending Widcombe Infant School at the time of application who have a sibling attending Widcombe Infant School or Widcombe C of E Junior School who will still be on roll at the time of admission.

Priority 3 - Children attending Widcombe Infant School at the time of application who do not have a sibling at either Widcombe Infant School or Widcombe C of E Junior School

Priority 4 - Children who are not attending Widcombe Infant School but have a sibling at either Widcombe Infant School or Widcombe C of E Junior School who will still be attending either school at the time of admission.

Priority 5 - Children who, at the time of application, live within the Ecclesiastical Parish of Bath, Widcombe or with a confirmed move to an address within this Parish and are eligible to receive a Pupil Premium.

Priority 6 - Children who at the time of application, live within the Ecclesiastical Parish of Bath, Widcombe or with a confirmed move to an address within this Parish.

Priority 7 - Children who at the time of application are eligible to receive a Pupil Premium, or Service Premium.

Priority 8 - Children not satisfying a higher criterion.

A map indicating the Ecclesiastical Parish of Bath, Widcombe is available on the school website. A copy is also kept at the school and is available to view by appointment.

A SIF is provided on the school website and is required for categories 1, 5, or 7. The SIF must be completed and returned directly to the school by 15 January 2023

[Back to Contents Page](#)

Appendix 2

Infant, junior, and primary schools in Bath & North East Somerset

| Abbot Alphege Academy | | |
|---|---------------------------------|---------|
| Beckford Drive, Lansdown, Bath, BA1 9AU | Status | Academy |
| | Age Range | 4 - 11 |
| | Admission Number | 30 |
| Telephone: 01225 580281 | Head Teacher – Mrs Vicky Dupras | |
| Email: office@abbot-alphege.org.uk | | |
| Website: www.abbot-alphege.org.uk/ | | |

| Bathampton Primary | | |
|---|--------------------------------|---------|
| Tynning Road, Bathampton, Bath, BA2 6TQ | Status | Academy |
| | Age Range | 4 - 11 |
| | Admission Number | 30 |
| Telephone: 01225 465229 | Head Teacher – Mrs Naomi Boyce | |
| Email: enquiries@bathampton.bwmat.org | | |
| Website: www.bathamptonprimary.org | | |

| Batheaston Church School | | |
|---|------------------------------------|---------|
| School Lane, Northend, Bath, BA1 7UB | Status | Academy |
| | Age Range | 4 - 11 |
| | Admission Number | 30 |
| Telephone: 01225 858555 | Head Teacher – Mrs Sally Jefferies | |
| Email: office@batheaston.bwmat.org | | |
| Website: www.batheastonprimary.co.uk | | |

| Bathford Church School | | |
|---|---------------------------------|---------|
| Dovers Park, Bathford, Bath, BA1 7UB | Status | Academy |
| | Age Range | 4 - 11 |
| | Admission Number | 30 |
| Telephone: 01225 858776 | Head Teacher – Mrs Becky Hayter | |
| Email: office@bathford.bwmat.org | | |
| Website: www.bathfordchurchschool.co.uk | | |

| Bathwick St. Mary Church School | | |
|---|---------------------------------|---------|
| Darlington Road, Bath, BA2 6NN | Status | Academy |
| | Age Range | 4 - 11 |
| | Admission Number | 30 |
| Telephone: 01225 465654 | Head Teacher – Mr Kevin Purkiss | |
| Email: office@bsm.bwmat.org | | |
| Website: www.bathwickstmary.org | | |

| Bishop Sutton Primary | | |
|---|-------------------------------|---------|
| Wick Road, Bishop Sutton, Bristol, BS39 5XD | Status | Academy |
| | Age Range | 4 - 11 |
| | Admission Number | 30 |
| Telephone: 01275 332817 | Head Teacher – Mr Dieter Cook | |
| Email: BSPS@bishopsuttonstantondrew.co.uk | | |
| Website: www.bishopsuttonstantondrew.co.uk | | |

[Back to Contents Page](#)

| Cameley Primary | | |
|---|----------------------------------|---------|
| Meadway, Temple Cloud, Bristol, BS39 5BD | Status | Academy |
| | Age Range | 4 - 11 |
| | Admission Number | 25 |
| Telephone: 01761 452644 | Head Teacher – Miss Hannah Maggs | |
| Email: office@cameleyprimary.org.uk | | |
| Website: www.cameleyprimaryschool.org | | |

| Castle Primary | | |
|---|---------------------------------|---------|
| Newlands Road, Keynsham, Bristol, BS31 2TS | Status | Academy |
| | Age Range | 4 - 11 |
| | Admission Number | 60 |
| Telephone: 0117 9864489 | Head Teacher – Mr Chris Canning | |
| Email: Office@castleprimary.uk | | |
| Website: www.castle.bathnes.sch.uk | | |

| Chandag Infant | | |
|---|--------------------------------|---------|
| Chandag Road, Keynsham, Bristol, BS31 1PQ | Status | Academy |
| | Age Range | 4 - 7 |
| | Admission Number | 60 |
| Telephone: 0117 9864129 | Head Teacher – Mrs Annie Smart | |
| Email: enquires@chandaginantschool.org.uk | | |
| Website: www.chandaginantschool.org.uk/ | | |

| Chandag Junior | | |
|---|------------------------------|---------|
| Chandag Road, Keynsham, Bristol, BS31 1PQ | Status | Academy |
| | Age Range | 7 - 11 |
| | Admission Number | 68 |
| Telephone: 0117 9863614 | Head Teacher – Mrs Jo Savory | |
| Email: enquiries@chandagjuniorschool.org.uk | | |
| Website: www.chandagjuniorschool.org.uk | | |

| Chew Magna Primary | | |
|---|---------------------------------|---------|
| Buthams Lane, Chew Magna, Bristol, BS40 8RQ | Status | Academy |
| | Age Range | 4 - 11 |
| | Admission Number | 15 |
| Telephone: 01275 332409 | Head Teacher – Ms Annie Spencer | |
| Email: office@chewmagnaschool.org.uk | | |
| Website: www.chewmagna.bathnes.sch.uk | | |

| Chew Stoke Church School | | |
|---|------------------------------|---------|
| School Lane, Chew Stoke, Bristol, BS41 8UY | Status | Academy |
| | Age Range | 4 - 11 |
| | Admission Number | 28 |
| Telephone: 01275 332354 | Head Teacher – Mr Ben Hewett | |
| Email: office@chewstokeacademy.org | | |
| Website: www.chewstokeacademy.org | | |

| Clutton Primary | | |
|---|---|---------|
| Station Road, Clutton, Bristol, BS39 5RA | Status | Academy |
| | Age Range | 4 - 11 |
| | Admission Number | 25 |
| Telephone: 01761 452510 | Head of School – Mrs Lucy Cowgill Executive Head Teacher - Mr Dan Turull | |
| Email: office@cluttonschool.com | | |
| Website: www.cluttonschool.com | | |

[Back to Contents Page](#)

Combe Down C. of E. Primary

| | | |
|---|-----------------------------------|---------|
| Summer Lane, Combe Down, Bath, BA2 5JX | Status | Academy |
| | Age Range | 4 - 11 |
| | Admission Number | 60 |
| Telephone: 01225 840324 | Head Teacher – Mrs Jane Gascoigne | |
| Email: cdpoffice@palladianacademytrust.com | | |
| Website: www.combedown.com | | |

East Harptree C. of E. Primary

| | | |
|---|------------------------------|---------|
| Church Lane, East Harptree, Bristol, BS40 6BD | Status | Academy |
| | Age Range | 4 - 11 |
| | Admission Number | 15 |
| Telephone: 01761 221492 | Head Teacher – Mr Ian Harvey | |
| Email: office@eastharptreeprimary.org.uk | | |
| Website: www.eastharptreeandubley.org.uk | | |

Farmborough Church Primary

| | | |
|---|----------------------------------|---------|
| The Street, Farmborough, Bath, BA2 0FY | Status | Academy |
| | Age Range | 4 - 11 |
| | Admission Number | 25 |
| Telephone: 01761 470714 | Head Teacher – Mr Darren Roberts | |
| Email: office@farmboroughchurchprimary.org.uk | | |
| Website: www.farmboroughchurchprimary.org.uk | | |

Farrington Gurney C. of E. Primary

| | | |
|---|--|---------|
| Church Lane, Farrington Gurney, Bristol, BS39 6TY | Status | Academy |
| | Age Range | 4 - 11 |
| | Admission Number | 15 |
| Telephone: 01761 452419 | Head of School – Mr Andrew Dix Executive Head Teacher - Mr Dan Turull | |
| Email: office@farringtongurneyschool.co.uk | | |
| Website: www.farringtongurneyschool.co.uk | | |

Freshford Church School

| | | |
|---|----------------------------------|---------|
| High Street, Freshford, Bath, BA2 7WE | Status | Academy |
| | Age Range | 4 - 11 |
| | Admission Number | 20 |
| Telephone: 01225 723331 | Head Teacher – Mr Andrew Wishart | |
| Email: office@freshford.bwmat.org | | |
| Website: www.freshfordschool.org.uk | | |

High Littleton C. of E. Primary

| | | |
|---|-----------------------------------|---------|
| Church Hill, High Littleton, Bristol, BS39 5HF | Status | Academy |
| | Age Range | 4 - 11 |
| | Admission Number | 25 |
| Telephone: 01761 470622 | Head Teacher – Mr Gareth Griffith | |
| Email: office@highlittletonschool.com | | |
| Website: www.highlittletonschool.com | | |

Longvernal Primary

| | | |
|---|----------------------------------|---------|
| Clapton Road, Midsomer Norton, Bath, BA3 2LP | Status | Academy |
| | Age Range | 4 - 11 |
| | Admission Number | 30 |
| Telephone: 01761 412777 | Head Teacher – Mrs Karen Bazeley | |
| Email: office@longvernalschool.com | | |
| Website: www.longvernal.com | | |

[Back to Contents Page](#)

| Marksbury C. of E. Primary | | |
|---|---------------------------------|---------|
| Marksbury, Bath, BA2 9HS | Status | Academy |
| | Age Range | 4 - 11 |
| | Admission Number | 15 |
| Telephone: 01761 470628 | Head Teacher – Mrs Julie Player | |
| Email: enquiries@marksburyschool.org.uk | | |
| Website: www.marksburyschool.org.uk | | |

| Midsomer Norton Primary | | |
|--|--------------------------------|---------|
| High Street, Midsomer Norton, Bath, BA3 2DR | Status | Academy |
| | Age Range | 4 - 11 |
| | Admission Number | 45 |
| Telephone: 01761 412289 | Head Teacher – Mr Alun Randell | |
| Email: office@midsomernortonprimary.co.uk | | |
| Website: https://www.midsomernortonprimary.co.uk/ | | |

| Moorlands Infant | | |
|---|------------------------------------|---------|
| Moorfields Road, Bath, BA2 2DQ (all post and contacts via Junior School) | Status | Academy |
| | Age Range | 4 - 7 |
| | Admission Number | 60 |
| Telephone: 01225 421912 | Head Teacher – Miss Louisa Sellars | |
| Email: office@moorlands-school.com | | |
| Website: www.moorlands-school.org | | |

| Moorlands Junior | | |
|---|------------------------------------|---------|
| Chantry Mead Road, Bath, BA2 2DE | Status | Academy |
| | Age Range | 7 - 11 |
| | Admission Number | 60 |
| Telephone: 01225 421912 | Head Teacher – Miss Louisa Sellars | |
| Email: office@moorlands-school.com | | |
| Website: www.moorlands-school.org | | |

| Mulberry Park Educate Together Primary | | |
|---|-----------------------------------|---------|
| Mulberry Way, Combe Down, Bath, BA2 5BU | Status | Academy |
| | Age Range | 4 - 11 |
| | Admission Number | 30 |
| Telephone: 01225 696444 | Head Teacher – Mrs Sarah Phillips | |
| Email: info@muberryparket.org.uk | | |
| Website: www.mulberryparket.org.uk | | |

| Newbridge Primary | | |
|---|---------------------------------|-----------|
| Charmouth Road, Bath, BA1 3LL | Status | Community |
| | Age Range | 4 - 11 |
| | Admission Number | 60 |
| Telephone: 01225 421675 | Head Teacher – Ms Gill Kennaugh | |
| Email: newbridge_pri@bathnes.gov.uk | | |
| Website: www.newbridge.bathnes.sch.uk | | |

| Norton Hill Primary | | |
|--|---------------------------------------|---------|
| Silver Street, Midsomer Norton, Radstock, BA3 2UE | Status | Academy |
| | Age Range | 4 - 11 |
| | Admission Number | 30 |
| Telephone: 01761 205630 | Head Teacher – Mrs Siobhan Waterhouse | |
| Email: office@nortonhillprimary.com | | |
| Website: https://www.nortonhillprimary.com/ | | |

[Back to Contents Page](#)

Oldfield Park Infant

| | | |
|---|-----------------------------------|---------|
| Dorset Close, Bath, BA2 3RF | Status | Academy |
| | Age Range | 4 - 7 |
| | Admission Number | 60 |
| Telephone: 01225 422903 | Head Teacher – Mrs Claire McMurty | |
| Email: office@oldfieldpark-inf.bathnes.sch.uk | | |
| Website: http://oldfieldparkinfants.co.uk/ | | |

Oldfield Park Junior

| | | |
|---|---------------------------------|---------|
| Lymore Terrace, Twerton, Bath, BA2 2JL | Status | Academy |
| | Age Range | 7 - 11 |
| | Admission Number | 60 |
| Telephone: 01225 423477 | Head Teacher – Mr David Goucher | |
| Email: opjoffice@palladianacademytrust.com | | |
| Website: www.oldfieldparkjuniorschool.com | | |

Paulton Infant

| | | |
|---|--------------------------------|---------|
| Plumptre Close, Paulton, Bristol, BS39 7QY | Status | Academy |
| | Age Range | 4 - 7 |
| | Admission Number | 90 |
| Telephone: 01761 412354 | Head Teacher – Mrs Emily Omell | |
| Email: office@paulton-inf.bathnes.sch.uk | | |
| Website: www.paultoninfantschool.co.uk | | |

Paulton Junior

| | | |
|---|----------------------------------|-----------|
| Plumptre Close, Paulton, Bristol, BS39 7QY | Status | Community |
| | Age Range | 7 - 11 |
| | Admission Number | 90 |
| Telephone: 01761 418137 | Head Teacher – Mr Matt Grosvenor | |
| Email: paulton_jun@bathnes.gov.uk | | |
| Website: www.paultonjuniorschool.co.uk | | |

Peasedown St. John Primary

| | | |
|---|-------------------------------------|---------|
| Bath Road, Peasedown, Bath, BA2 8DH | Status | Academy |
| | Age Range | 4 - 11 |
| | Admission Number | 90 |
| Telephone: 01761 432311 | Head Teacher – Miss Elizabeth Ennew | |
| Email: office@psiprimary.co.uk | | |
| Website: www.psiprimary.co.uk/ | | |

Pensford Primary

| | | |
|---|----------------------------------|---------|
| Pensford Hill, Pensford, Bristol, BS39 4AA | Status | Academy |
| | Age Range | 4 - 11 |
| | Admission Number | 15 |
| Telephone: 01761 490470 | Head Teacher – Mr Warrick Barton | |
| Email: Pensford_office@pensfordschool.org | | |
| Website: www.pensfordschool.org | | |

Roundhill Primary

| | | |
|---|------------------------------|---------|
| Mount Road, Southdown, Bath, BA2 1LG | Status | Academy |
| | Age Range | 4 - 11 |
| | Admission Number | 60 |
| Telephone: 01225 424950 | Head Teacher – Mrs Sue Adams | |
| Email: office@roundhill-pri.co.uk | | |
| Website: www.roundhill-pri.co.uk | | |

[Back to Contents Page](#)

| St. Andrew's Church School | | |
|---|---|---------|
| Northampton Street, Julian Road, Bath, BA1 2SN | Status | Academy |
| | Age Range | 4 - 11 |
| | Admission Number | 30 |
| Telephone: 01225 310135 | Head Teacher – Mrs Jayne Rochford-Smith | |
| Email: enquiries@standrewsbath.bwmat.org | | |
| Website: www.standrewsprimarybath.com | | |

| St. John's C. of E. Primary | | |
|---|---------------------------------|---------|
| Charlton Park, Keynsham, Bristol, BS31 2NB | Status | Academy |
| | Age Range | 4 - 11 |
| | Admission Number | 30 |
| Telephone: 0117 9863824 | Head Teacher – Mrs Wendy Carver | |
| Email: enquiries@stjohnskeynsham.co.uk | | |
| Website: www.stjohnskeynsham.co.uk | | |

| St. John's C. of E. Primary | | |
|--|---------------------------------------|---------|
| Redfield Road, Midsomer Norton, Bath, BA3 2JN | Status | Academy |
| | Age Range | 4 - 11 |
| | Admission Number | 60 |
| Telephone: 01761 412019 | Head Teacher – Mrs Danielle West-Gaul | |
| Email: office@stjohnsmsn.co.uk | | |
| Website: https://www.stjohnsmsn.co.uk | | |

| St. John's Catholic Primary | | |
|---|--|-----------------|
| Oldfield Lane, Bath, BA2 3NR | Status | Voluntary Aided |
| | Age Range | 4 - 11 |
| | Admission Number | 45 |
| Telephone: 01225 303990 | Head Teacher – Mrs Angela Bennett Head Teacher – Mr Tom Simmons | |
| Email: office@stjohns.bathnes.sch.uk | | |
| Website: www.stjohnscatholicprimary.org.uk | | |

| St. Julian's Church School | | |
|---|--|---------|
| Wellow, Bath, BA2 8QS | Status | Academy |
| | Age Range | 4 - 11 |
| | Admission Number | 16 |
| Telephone: 01225 833143 | Executive Head Teacher – Ms Ruth Noall | |
| Email: office@stjuliansprimary.co.uk | | |
| Website: www.stjuliansprimary.co.uk | | |

| St. Keyna Primary | | |
|---|------------------------------|-----------|
| Monmouth Road, Keynsham, Bristol, BS31 2JP | Status | Community |
| | Age Range | 4 – 11 |
| | Admission Number | 30 |
| Telephone: 0117 9863852 | Head Teacher – Mr Steve Gumm | |
| Email: stkeyna_pri@bathnes.gov.uk | | |
| Website: www.stkeynaprimary.co.uk | | |

| St. Martins Garden Primary | | |
|---|-----------------------------------|---------|
| Lympsham Green, Odd Down, Bath, BA2 2UN | Status | Academy |
| | Age Range | 4 - 11 |
| | Admission Number | 30 |
| Telephone: 01225 832112 | Head Teacher – Mrs Claire Parfitt | |
| Email: SMGSchool@PalladianAcademyTrust.com | | |
| Website: www.stmartinsgarden.org.uk | | |

[Back to Contents Page](#)

St. Mary's C. of E. Primary (Timsbury)

| | | |
|---|-------------------------------------|---------|
| Lansdown View, Timsbury, Bath, BA2 0JR | Status | Academy |
| | Age Range | 4 - 11 |
| | Admission Number | 30 |
| Telephone: 01761 470245 | Head Teacher – Mrs Michelle Parsons | |
| Email: office@stmarystimsbury.co.uk | | |
| Website: http://stmarystimsbury.co.uk/ | | |

St. Mary's C. of E. Primary (Writhlington)

| | | |
|---|----------------------------------|---------|
| Old Road, Writhlington, Radstock, Bath, BA3 3NG | Status | Academy |
| | Age Range | 4 - 11 |
| | Admission Number | 30 |
| Telephone: 01761 434548 | Head Teacher – Ms Cathie Lampert | |
| Email: office@stmaryswrithlington.co.uk | | |
| Website: www.stmaryswrithlington.co.uk | | |

St. Mary's Catholic Primary

| | | |
|---|--------------------------------|-----------------|
| Penn Hill Road, Weston, Bath, BA1 4EH | Status | Voluntary Aided |
| | Age Range | 4 - 11 |
| | Admission Number | 30 |
| Telephone: 01225 429030 | Head Teacher – Mr Andy Tarrant | |
| Email: admin@st-marys.bathnes.sch.uk | | |
| Website: www.st-marys.bathnes.sch.uk | | |

St. Michael's Junior Church School

| | | |
|---|--------------------------------|---------|
| Newton Road, Twerton, Bath, BA2 1RW | Status | Academy |
| | Age Range | 7 - 11 |
| | Admission Number | 60 |
| Telephone: 01225 421888 | Head Teacher – Ms Clare Greene | |
| Email: enquiries@stmichaels.bwmat.org | | |
| Website: https://www.stmichaelsbath.org/ | | |

St. Nicholas' Church School

| | | |
|---|---|---------|
| Kilmersdon Road, Radstock, Bath, BA3 3QG | Status | Academy |
| | Age Range | 4 - 11 |
| | Admission Number | 60 |
| Telephone: 01761 432101 | Executive Head Teacher – Mrs Nicola Smith | |
| Email: enquiries@stnicholas.bwmat.org | | |
| Website: www.stnicholasschool.co.uk | | |

St. Philip's C. of E. Primary

| | | |
|---|----------------------------|---------|
| Bloomfield Rise, Bath, BA2 2BN | Status | Academy |
| | Age Range | 4 - 11 |
| | Admission Number | 40 |
| Telephone: 01225 837946 | Head Teacher – Mr Andy Joy | |
| Email: mail@stphilips-school.org | | |
| Website: www.stphilips-school.org | | |

St. Saviour's Infant Church School

| | | |
|---|--------------------------------|---------|
| Spring Lane, Larkhall, Bath, BA1 6NY | Status | Academy |
| | Age Range | 4 - 7 |
| | Admission Number | 60 |
| Telephone: 01225 313928 | Head Teacher – Mrs Sophie Hunt | |
| Email: infantenquiries@stsaviours.bwmat.org | | |
| Website: www.stsavioursbath.co.uk | | |

[Back to Contents Page](#)

| St. Saviour's Junior Church School | | |
|---|----------------------------------|---------|
| Brookleaze Place, Larkhall, Bath, BA1 6RB | Status | Academy |
| | Age Range | 7 - 11 |
| | Admission Number | 60 |
| Telephone: 01225 310137 | Head Teacher – Mrs Jenni Simmons | |
| Email: juniorenquiries@stsaviours.bwmat.org | | |
| Website: www.stsavioursbath.co.uk | | |

| St. Stephen's Primary Church School | | |
|---|-----------------------------------|---------|
| Richmond Place, Lansdown, Bath, BA1 5PZ | Status | Academy |
| | Age Range | 4 - 11 |
| | Admission Number | 60 |
| Telephone: 01225 311665 | Head Teacher – Miss Claire Taylor | |
| Email: enquiries@ststephens.bwmat.org | | |
| Website: www.st-stephens.bathnes.sch.uk | | |

| Saltford C. of E. Primary | | |
|---|------------------------------|---------|
| Claverton Road, Saltford, Bristol, BS31 3DW | Status | Academy |
| | Age Range | 4 - 11 |
| | Admission Number | 60 |
| Telephone: 01225 872185 | Head Teacher – Mrs Dawn Sage | |
| Email: contactus@saltfordschool.org.uk | | |
| Website: www.saltfordschool.org.uk | | |

| Shoscombe Church School | | |
|---|-------------------------------|---------|
| St Julian's Road, Shoscombe, Bath, BA2 8NB | Status | Academy |
| | Age Range | 4 - 11 |
| | Admission Number | 17 |
| Telephone: 01761 432479 | Head Teacher – Mrs Ruth Noall | |
| Email: office@shoscombeprimary.co.uk | | |
| Website: www.shoscombeprimary.co.uk | | |

| Somerdale Educate Together Primary | | |
|---|---|---------|
| Tiberius Road, Keynsham, Bristol, BS31 2FF | Status | Academy |
| | Age Range | 4 - 11 |
| | Admission Number | 30 |
| Telephone: 0117 3790888 | Head Teacher – Mr Chris Thomas-Unsworth | |
| Email: info@somerdaleet.org.uk | | |
| Website: www.somerdaleet.org.uk | | |

| Stanton Drew Primary | | |
|---|-------------------------------|---------|
| Upper Stanton, Stanton Drew, Bristol, BS39 4EQ | Status | Academy |
| | Age Range | 4 – 11 |
| | Admission Number | 10 |
| Telephone: 01275 332820 | Head Teacher – Mr Dieter Cook | |
| Email: SDPS@bishopsuttonstantondrew.co.uk | | |
| Website: www.bishopsuttonstantondrew.co.uk | | |

| Swainswick Church School | | |
|---|------------------------------------|---------|
| Innox Lane, Upper Swainswick, Bath, BA1 8DB | Status | Academy |
| | Age Range | 4 - 11 |
| | Admission Number | 12 |
| Telephone: 01225 859279 | Head Teacher – Mr Grant Swarbrooke | |
| Email: enquiries@swainswick.bwmat.org | | |
| Website: www.swainswickschool.co.uk | | |

[Back to Contents Page](#)

| Trinity Church School | | |
|---|-------------------------------------|---------|
| Woodborough Lane, Radstock, Bath, BA3 3DE | Status | Academy |
| | Age Range | 4 - 11 |
| | Admission Number | 30 |
| Telephone: 01761 438650 | Head Teacher – Mrs Michelle Parsons | |
| Email: office@trinitychurchschool.com | | |
| Website: www.trinitychurchschool.com | | |

| Twerton Infant | | |
|---|---------------------------------|-----------|
| Poolemead Road, Twerton, Bath, BA2 1QR | Status | Community |
| | Age Range | 4 - 7 |
| | Admission Number | 60 |
| Telephone: 01225 423526 | Head Teacher – Mr George Samios | |
| Email: twerton_inf@bathnes.gov.uk | | |
| Website: www.twertoninfant.school/ | | |

| Two Rivers CE Primary | | |
|---|----------------------------------|---------|
| Temporary accommodation on the Wellsway Campus until completed on the Hygge Park development in Keynsham. | Status | Academy |
| | Age Range | 4 - 11 |
| | Admission Number | 60 |
| Telephone: 0117 9161027 | Head Teacher – Mrs Claire Graham | |
| Email: enquiries@tworiversschool.org.uk | | |
| Website: www.tworiversschool.org.uk | | |

| Ubley C. of E. Primary | | |
|---|------------------------------|---------|
| The Street, Ubley, Bristol, BS40 6PJ | Status | Academy |
| | Age Range | 4 - 11 |
| | Admission Number | 15 |
| Telephone: 01761 462654 | Head Teacher – Mr Ian Harvey | |
| Email: office@ubley.school | | |
| Website: www.eastharpreeandubley.org.uk | | |

| Welton Primary | | |
|---|------------------------------|---------|
| Radstock Road, Midsomer Norton, Bath, BA3 2AG | Status | Academy |
| | Age Range | 4 - 11 |
| | Admission Number | 28 |
| Telephone: 01761 413131 | Head Teacher – Mr John Snell | |
| Email: office@weltonprimaryschool.co.uk | | |
| Website: www.weltonprimaryschool.co.uk | | |

| Westfield Primary | | |
|---|-------------------------------|---------|
| Longfellow Road, Radstock, Bath, BA3 3XX | Status | Academy |
| | Age Range | 4 - 11 |
| | Admission Number | 60 |
| Telephone: 01761 413662 | Head Teacher – Mr Simon Mills | |
| Email: office@westfieldprimary.com | | |
| Website: www.westfieldprimary.com | | |

| Weston All Saints C. of E. Primary | | |
|---|-----------------------------------|---------|
| Broadmoor Lane, Weston, Bath, BA1 4JR | Status | Academy |
| | Age Range | 4 - 11 |
| | Admission Number | 90 |
| Telephone: 01225 421786 | Head Teacher – Mr Matthew Norcott | |
| Email: westonallsaints_pri@wasp-school.org.uk | | |
| Website: www.wasp-school.org.uk | | |

[Back to Contents Page](#)

| Whitchurch Primary | | |
|---|--------------------------------|---------|
| Bristol Road, Whitchurch, Bristol, BS14 0PQ | Status | Academy |
| | Age Range | 4 - 11 |
| | Admission Number | 45 |
| Telephone: 01275 833593 | Head Teacher – Mr Carl Hornsby | |
| Email: office@whitchurchprimary.co.uk | | |
| Website: www.whitchurchprimary.co.uk | | |

| Widcombe Infant | | |
|---|----------------------------------|---------|
| Archway Street, Bath, BA2 4JG | Status | Academy |
| | Age Range | 4 - 7 |
| | Admission Number | 60 |
| Telephone: 01225 421998 | Head Teacher – Miss Alison Watts | |
| Email: widcombeinfants@palladianacademytrust.com | | |
| Website: www.widcombeinfantschool.co.uk | | |

| Widcombe C. of E. Junior | | |
|---|---|---------|
| Pulteney Road, Bath, BA2 4JG | Status | Academy |
| | Age Range | 7 - 11 |
| | Admission Number | 60 |
| Telephone: 01225 310139 | Head of School – Mr Aaron Harley Executive Head Teacher – Mrs Rebecca Wilson | |
| Email: WJS-office@palladianacademytrust.com | | |
| Website: https://www.widcombejuniorschool.com/ | | |

[Back to Contents Page](#)

Appendix 3

Mainstream schools with Resource Bases for Primary Age children

| St. Martins Garden Primary | | |
|--|------------------|--------|
| Margaret Coates Centre For pupils with Autism | Age Range | 4 - 11 |
| | | |
| St. Nicholas | | |
| For pupils with Social, Emotional & Mental Health Difficulties | Age Range | 4 - 11 |
| | | |
| Weston All Saints C. of E. Primary | | |
| For pupils with a Hearing Impairment | Age Range | 4 - 11 |
| | | |

Appendix 4

Special Schools for Primary Age Children

| Aspire Academy | | |
|--|-------------------------------|---------|
| Frome Road, Odd Down, Bath, BA2 5RF | Status | Academy |
| | Age Range | 4 - 19 |
| | | |
| Telephone: 01225 832212 | Head Teacher – Peter Headeach | |
| Email: enquiries@aspireacademy.org.uk | | |
| Website: www.aspireacademy.org.uk | | |
| For pupils with Social, Emotional & Mental Health Difficulties and Autistic Spectrum Condition and Complex Needs | | |
| Fosse Way School | | |
| Longfellow Road, Midsomer Norton, Bath, BA3 4BL | Status | Academy |
| | Age Range | 3 - 19 |
| | | |
| Telephone: 01761 412198 | Head Teacher – Ms Fiona Flinn | |
| Email: office@fossewayschool.com | | |
| Website: www.fossewayschool.co.uk | | |
| For Pupils with complex learning difficulties | | |
| Three Ways School | | |
| 180 Frome Road, Odd Down, Bath, BA2 5RF | Status | Academy |
| | Age Range | 2 - 19 |
| | | |
| Telephone: 01225 838 070 | Head Teacher – Ms Jo Stoling | |
| Email: enquiries@threeways.co.uk | | |
| Website: www.threeways.co.uk | | |
| For pupils with complex learning difficulties | | |
| The Local Authority commission places in negotiation with the schools on an annual basis | | |

[Back to Contents Page](#)

A Primary School for your Child

In Bath and North East Somerset
2023/2024