

ATKINS

Changes to Bath City Centre

How the changes might
affect disabled people



**easy
read**

Contents

	Page
Introduction	3
About the changes	4
Asking people what they think	6
How the changes would affect disabled people	7
What needs to happen	13
What will happen next	16



In this easy read document, difficult words are in **bold**. We explain what these words mean in the sentence after they have been used.



Some words are [blue and underlined](#). These are links which will go to another website which has more information.

Introduction



Bath and North East Somerset Council want to make some changes to Bath City Centre.

The changes aim to:

- reduce the risk of **terrorism** and keep people safe

Terrorism is when someone does something violent that puts other people's lives in danger.

- reduce the amount of traffic on Milsom Street and Kingsmead Square.



This is a report about the changes and how they will affect disabled people.

About the changes



Avon and Somerset police have told Bath and North East Somerset Council to create a **security zone** in the city centre.

A **security zone** is an area where driving is not allowed.



This is to help keep everyone safe from terrorism.



The council also want to change how people use Milsom Street and Kingsmead Square.



They want to stop most vehicles from being able to use these roads.

This includes vehicles driven by:



- disabled people



- someone supporting a disabled person



- people with a Blue Badge - this is a badge that lets you park closer to where you are going if you are disabled.

Asking people what they think



Last year the council asked people what they thought about the changes they want to make to Bath City Centre.



522 people told the council what they thought.



A lot of these people were worried about how the changes would affect the way disabled people use the city centre.



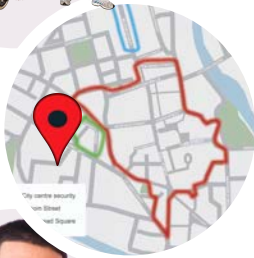
Over half of these people did not want the changes to happen.

How the changes would affect disabled people

We looked at how the changes would affect disabled people who:



- have different types of disability



- live in the city centre



- work in the city centre



- use shops or services in the city centre



- are visiting the city centre on a day trip or holiday.



We also looked at how the changes would affect people who support disabled people.



Wellbeing

Wellbeing is feeling good about yourself and being happy.



Not being able to go into the city centre would affect disabled people's wellbeing over time.



Health

Not being able to access community life every day would have a bad effect on people's **physical** and **mental** health.



Physical health is how someone is feeling in their body.



Mental health is how our minds work and how we feel about ourselves.

Equal access



Equal access is when something is the same for everyone.

We need to keep people safe but also make it possible for everyone to visit the city centre.



Stopping people with Blue Badges driving into some parts of the city would make it difficult for them to go to the city like everyone else.



Keeping people safe in the city must include a way to allow people with Blue Badges to drive close to where they are going.



Being independent

These changes could stop people with a disability from going to the city centre on their own.



The changes would mean people would need to walk more than 50 metres to get to some places in the city centre.



People with a Blue Badge can't always walk more than 50 metres, or it would cause them a lot of pain to do it.



It can be difficult for some blind people to walk more than 50 metres.



Some of the pavements and roads are not flat. A person could trip, or it could stop them using a wheelchair.

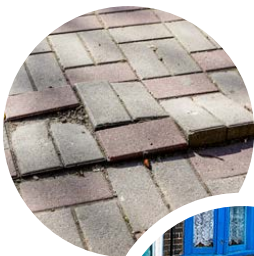


Using a wheelchair

Using a wheelchair is not always possible.

This is because:

- the pavements and roads are not all flat
- some of the pavements are too narrow





- there are not enough **dropped kerbs**

Dropped kerbs are sloping bits of pavement to help you move on to or off the road.



- there are things on the pavements that can get in the way



- people who are blind or partially sighted can't use a wheelchair.



Other ways to make the city centre safe

We looked at other ways to keep people safe in the city centre. These included:



- a **permit** system

A **permit** is a pass or card to show someone can drive into the city centre.



- a **shuttle service**.

A **shuttle service** is a bus taking people to and from the city centre.



Neither of these things would be very good for disabled people.

What needs to happen



The changes will make things more difficult for some disabled people, so the city centre needs to be made more **accessible**.

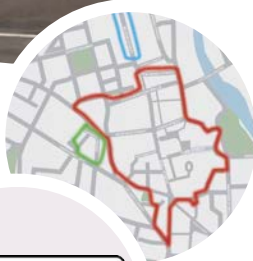
Accessible means it is easy to use and suitable for people with different needs.

There would need to be:

- more parking spaces outside the city centre for people with Blue Badges
- better access to the city centre from the car parks outside it
- more accessible toilets.

People we spoke to are also worried about:

- Avon Street having no toilets
- the dangerous steps between the train and bus stations



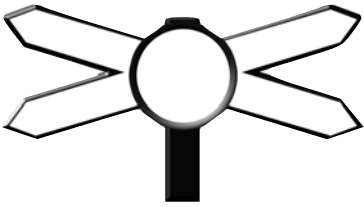


- the bus station not being easy to use for blind people
- the way to the Charlotte Street car park being uneven and bumpy, making it dangerous
- the path by the Manvers Street car park being sloped, making it hard to use
- Seven-Dials Junction being dangerous to use.

To help disabled people use the city centre we think the council needs to:



- allow access to the city centre for deliveries and people with Blue Badges
- look at New Bond Street and Seven-Dials Junction - they are important places and need to be accessible



- make it easier for people to find their way round the city centre with better signs



- allow bicycles and e-scooters to use certain routes



- give out information in a way that everyone understands.

What will happen next



The Council will make a decision about what to do now that they know more about how the changes will affect disabled people.