



Bath & North East Somerset Council is seeking your feedback on plans to improve your neighbourhood streets, and the proposals set out in this leaflet.

Lately we've seen a significant increase in traffic on residential streets which makes walking, wheeling and cycling much harder. We want to improve streets so that people who don't have cars, or who want to travel actively, can get around safely.

The map of your area overleaf shows a range of improvements to complement the existing through-traffic restriction, encourage more considerate driving, and create safer routes to schools and shops and a quieter, healthier environment.

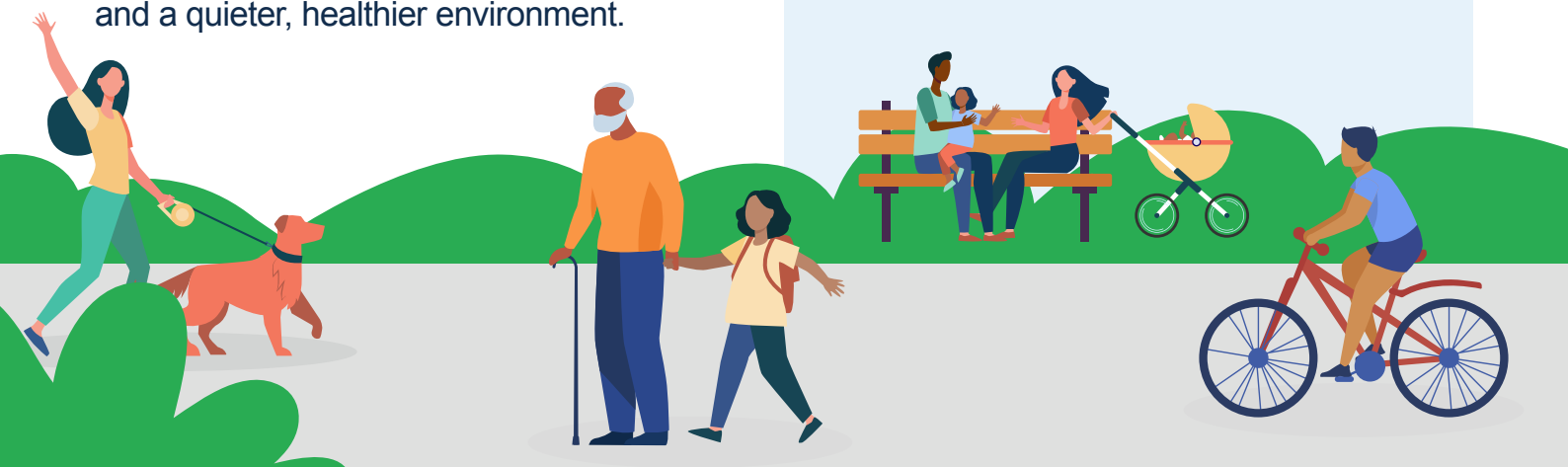
Share your views

1. View the proposals inside
2. Find out more online
3. Share your feedback at www.bathnes.gov.uk/yourLN

Contact

Please contact us for support

- Call **01225 394025** (9am-5pm)
- Email LN@bathnes.gov.uk



Funded by
UK Government

Funding secured by

WEST MAYORAL
OF ENGLAND COMBINED
AUTHORITY

Bath & North East
Somerset Council
Improving People's Lives

Scan the QR code to find out more on your smartphone



In the Chelsea Road LN area, we are proposing a series of continuous crossings across four key junctions.

Continuous crossings feature wide, block-style paving raised to the level of the pavement. They are designed to slow vehicles approaching the junction and give pedestrians priority when crossing the road. Bollards would line the edge of the footway to prevent vehicles from driving on the pavement.

- 1 A continuous crossing over Chelsea Road at the junction with Newbridge Hill.
- 2 A continuous crossing over Kennington Road at the junction with Chelsea Road.
- 3 A parking space on Kennington Road, west of the junction on the southern side of the street, would be removed and replaced with double yellow lines to accommodate the new crossing.
- 4 A continuous crossing over Park Road at the junction with Chelsea Road.
- 5 A continuous crossing over Chelsea Road at the junction with Newbridge Road (see BWWCL project below).

Finalising plans

Once we have considered your feedback, we will publish more detailed designs and make any necessary adjustments before installing the scheme under standard Traffic Regulation Orders. Please go to www.bathnes.gov.uk/yourLN (Chelsea Road) to find out more about how we decide on changes to road layouts.

Key

— Chelsea Road
— Area Liveable
Neighbourhood
Area

Why do we need these improvements?



Better health
and wellbeing



Less noise, congestion
and pollution



Closer, friendlier
communities

How were these proposals developed?

Over the last few years, we have engaged local communities, including residents in the Chelsea Road area, about traffic-related issues on residential streets. This has included several rounds of engagement and a co-design workshop to suggest improvements.

Not all the ideas put forward made it to this draft plan. Some are not affordable, some we have referred to different departments, and some ideas have evolved to ensure they are safe and meet specific technical criteria.

Aims of the scheme



The purpose of this scheme is to encourage more active travel by improving the experience of people walking to and from the shops on Chelsea Road.

Under the LN programme, we have already introduced a residents parking zone to reduce congestion and improve the flow of traffic here.

The introduction of a series of continuous crossings at key junctions will further improve the area for people walking or wheeling to Chelsea Road, including people with disabilities and those with pushchairs or mobility aids.

Next steps

We will consider
your feedback



Detailed designs
will be prepared and
published



Necessary
adjustments will
be made before
finalising plans



We will install the
improvements

Visit www.bathnes.gov.uk/yourLN to find out more