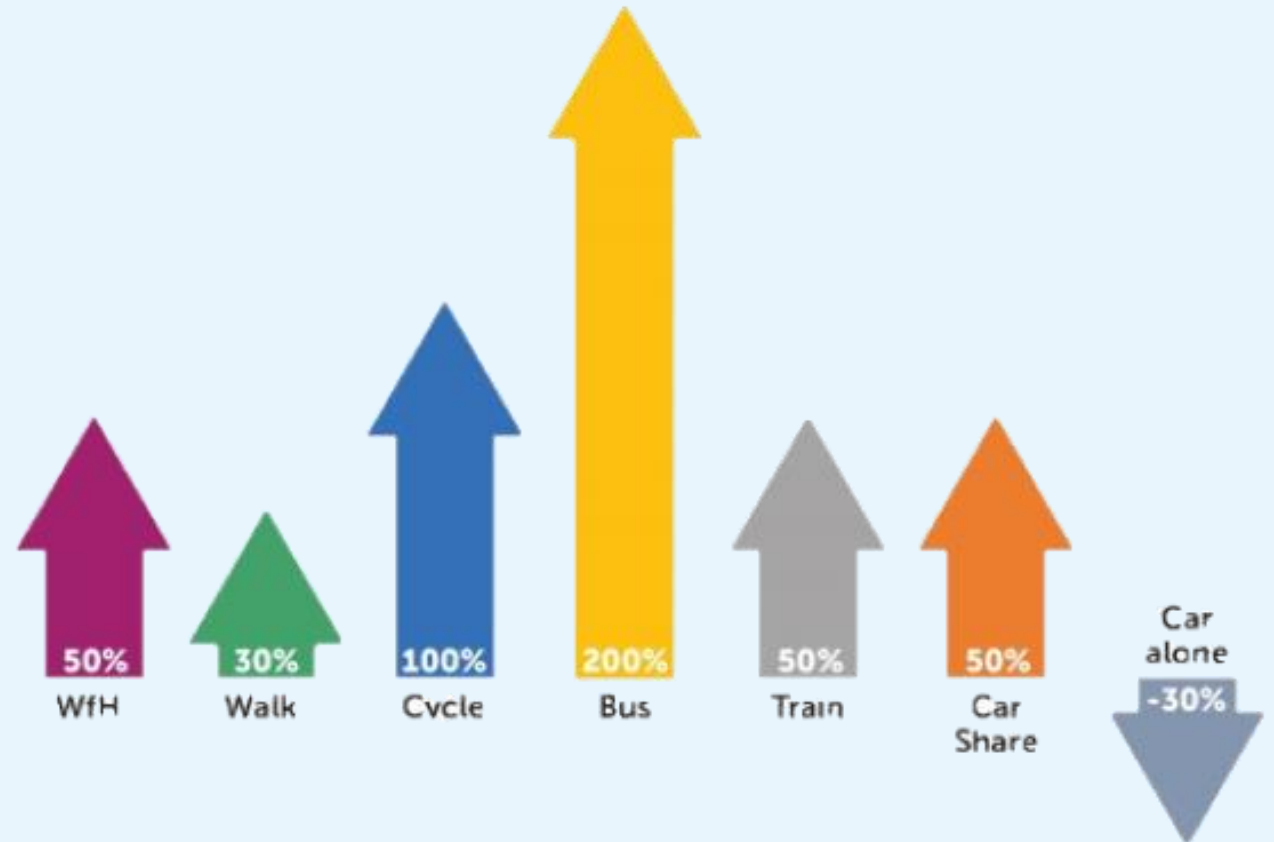

**Bath & North East
Somerset Council**

Improving People's Lives

Bath Transport Delivery Action Plan

Bath Transport Delivery Action Plan:

- Bath and North East Somerset Council declared a climate emergency in March 2019
- Carbon neutrality targets by 2030
 - Transport contributes 29% of CO2 emissions in B&NES
 - 25% reduction in vehicle miles per person
 - 7% cut in the number of car journey



Our Corporate Strategy – Adopted 2020

Priority :

Details of Corporate Strategy: The Corporate Strategy is the council's overarching strategic plan. It sets out what we plan to do, how we plan to do it, and how we will measure our performance over the next four years.

The new Strategy proposes a clear framework for what we will focus on and how we will work:

ONE:

We have one overriding purpose – to improve people's lives. This might sound simple, but it brings together everything we do, from cleaning the streets to caring for our older people. It is the foundation for our strategy and we will ensure that it drives our commitments, spending and service delivery.

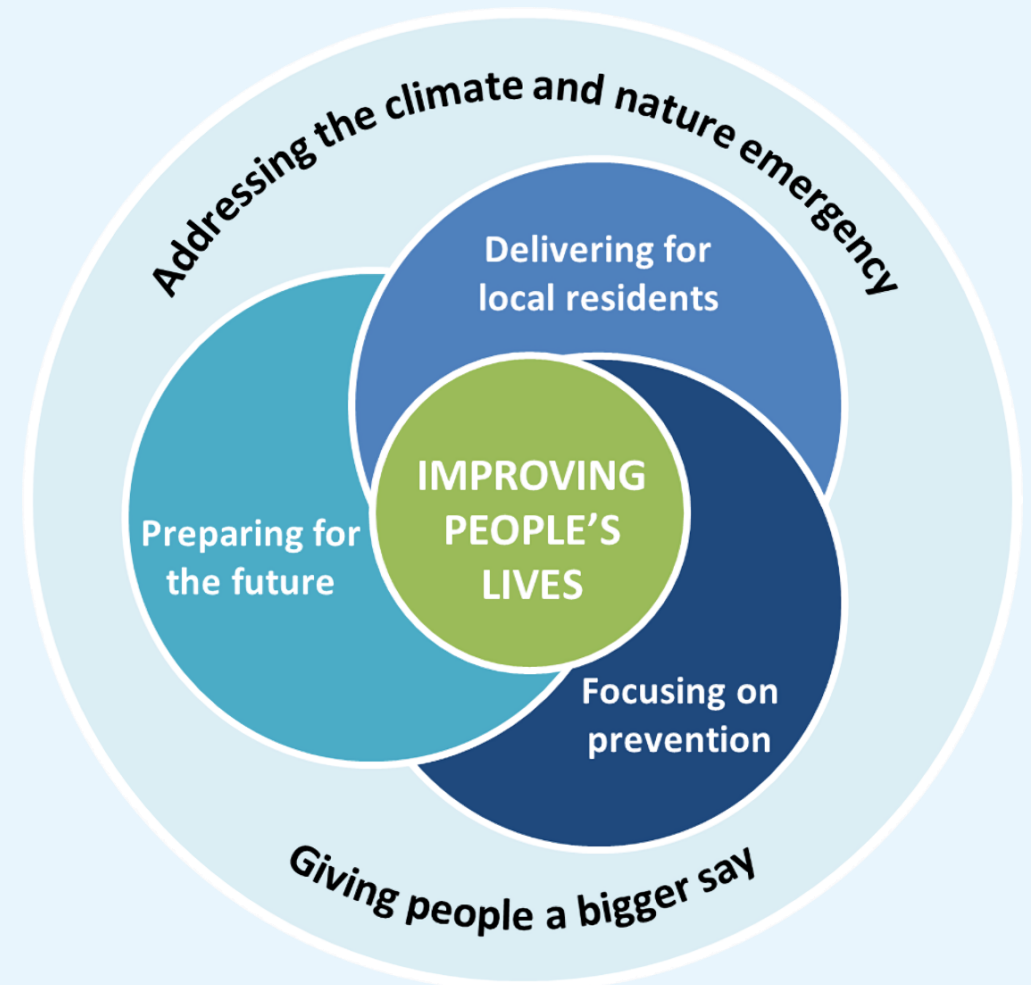
TWO:

We have two core policies – tackling the climate and nature emergency and giving people a bigger say. These will shape everything we do.

THREE:

To translate our purpose into commitments, we have identified three principles. We want to prepare for the future, deliver for local residents and focus on prevention.

The strategy does not include the detail on everything we must do – that is the role of more detailed delivery plans which flow from this document. However, the commitments in this strategy will guide the council and they represent the step changes that local residents in B&NES will experience from us.



Bath Transport Delivery Action Plan – What is it?

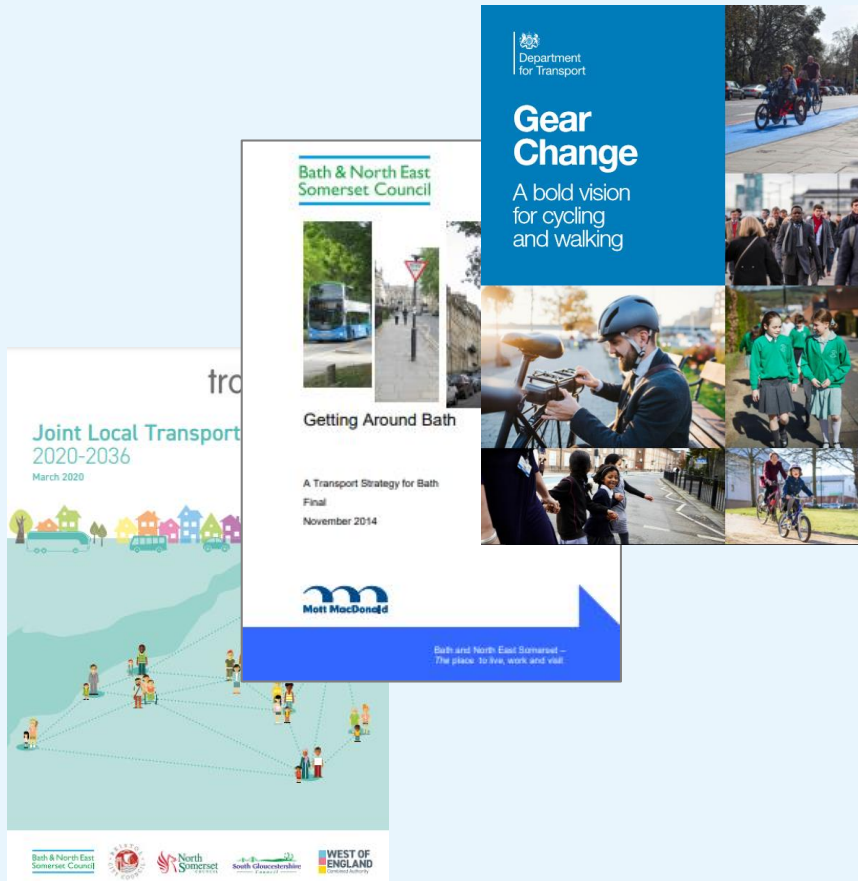
We need to look at new ways of getting around the area if we are to reach our target of being carbon neutral by 2030, in order to tackle the current climate and ecological emergency.

The Transport Delivery Plan for Bath will identify how we deliver sustainable transport into and around Bath, and shape the city's transport system for the next 10 years.

The plan will also consider how we can improve transport provision for those travelling into Bath.



Bath Transport Delivery Action Plan



Transport Strategies set out why.....

- JLTP4
- Getting Around Bath Transport Strategy
- Gear Change – A bold vision for cycling and walking

The Bath Transport Delivery Action Plan will set out how!

The need for change

29%

of B&NES carbon emissions
come from transport



Due to increased working and
living numbers in the West of
England, it is estimated that there
will be a **28%** rise in journeys
between 2011 and 2036

The need for change:



Over

20,000

residents live and work within
Bath. This figure almost

doubles

with an inflow of a further

16,000

workers per day

1 out of 3
car journeys in Bath are made within
the city. This equates to over

50,000

car movements on
a typical weekday.



The need for change



Physical inactivity directly
contributes to **1 in 6**
deaths in the UK and costs
£7.4bn a year



20 minutes of exercise
per day cuts the risk of
developing depression by

31%

and increases productivity
of workers

Objectives

The Plan will help us tackle some of the biggest challenges we face today by;



Addressing Climate emergency by reducing transport carbon emissions



Reducing Congestion



Enhancing health and well being



Further improving air quality



Reducing inequalities

Bath Transport Delivery Action Plan Current & Future Report

Understanding the current situation and the need for intervention:

- Who is travelling?
- What are the impacts of our travel?
- Why we travel?
- When do we travel?
- Where do we travel?
- How do we travel?



“Congestion still poses a major issue for the city including detrimental impacts on air quality, residents and business”

“The historic reduction in traffic volumes within Bath needs to be continued and accelerated to meet the requirements of the climate emergency.”

We want your feedback



Better bus services



Improve public transport
options



Supporting cyclists



Improve pedestrian access



Cleaner greener school travel



Fewer heavy goods
movements



Create improved places
to live and work



Connecting Bath to rural
communities



Supporting resilient mobility

Better Bus Services

- Separating buses from traffic?



- Improved access for buses?



- Bus service coordination?



- Cleaner bus travel?

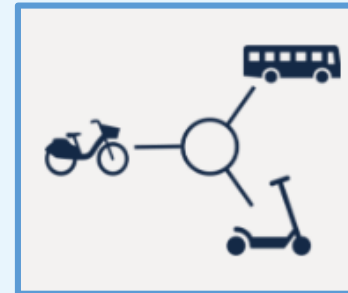


Improve Public Transport Options

- Upgrading Park & Ride sites



- Provision of local transport hubs



- Universal integrated ticketing



Supporting Cyclists

- Dedicated cycle routes into Bath



- Dedicated cycle routes within the city?



- Improved cycle security?



- Measures to support bike usage?



Improve Pedestrian Access

- Making improvements to the pedestrian experience



- Improving accessibility for Blue Badge holders



Cleaner Greener School Travel

- Encouraging sustainable travel to school
- Improving the environment around schools
- Better support for school journeys on public transport



Fewer Heavy Good Movements

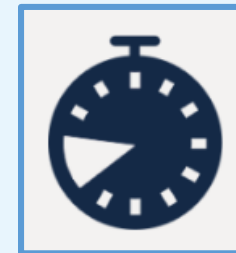
- Reducing road freight in the city centre



- Zero emission, last mile delivery services



- Restricting and managing deliveries



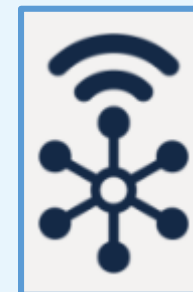
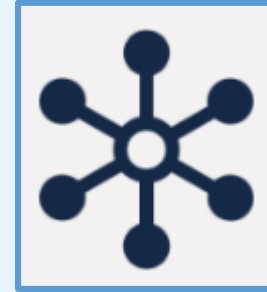
Create Improved Places to Live and Work

- Removing traffic from the city centre
- Reallocating road space
- A network of key routes
- Reducing city centre parking
- Improved coach drop off points and parking



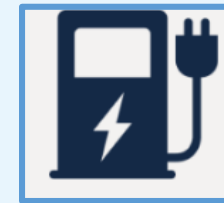
Connecting Bath to Rural Communities

- Transport hubs on express routes
- Safe cycle routes
- Reducing commuter travel from rural areas



Supporting Resilient Mobility

- More car clubs
- Widescale EV charging
- Integrated public and shared transport services
- Electric based shared transport schemes



Mass Transit

Mass transit is a public transport network that provides high capacity, fast, frequent and reliable services often segregated from other traffic. It can include over or underground routes and consist of several different types of transport, with direct links to existing rail and bus services

- The Transport Delivery Action Plan will include a detailed evidence-based study into what is possible in terms of a mass transit system in Bath and what would work best for the city
- This study will be developed alongside the work that is currently being undertaken at a regional level to assess a new and ambitious mass transport system that will revolutionise the way we travel around the West of England

Complementary Schemes



- Liveable neighbourhoods
- Clean Air Zone
- Greenway cycle improvements
- Future Transport Zone
- LCWIP
- E-scooters
- Bus Strategy
- Review of Residents Parking
- Electric Vehicle Charging

Next Steps

First public consultation

January 2021

The responses to this initial consultation will help us to develop transport options for Bath and surrounds

Second public consultation

Summer 2021

Further public consultation on the transport options developed and being considered for the Transport Delivery Plan

Release Transport Delivery Plan

Late Summer / Autumn 2021

Plan released setting out the road map for transport to 2030, setting out our future plans
The Plan will identify a number of schemes for further consideration / development

Looking Ahead

Late 2021 onwards

The Delivery Plan will be used to support funding bids for the delivery of schemes

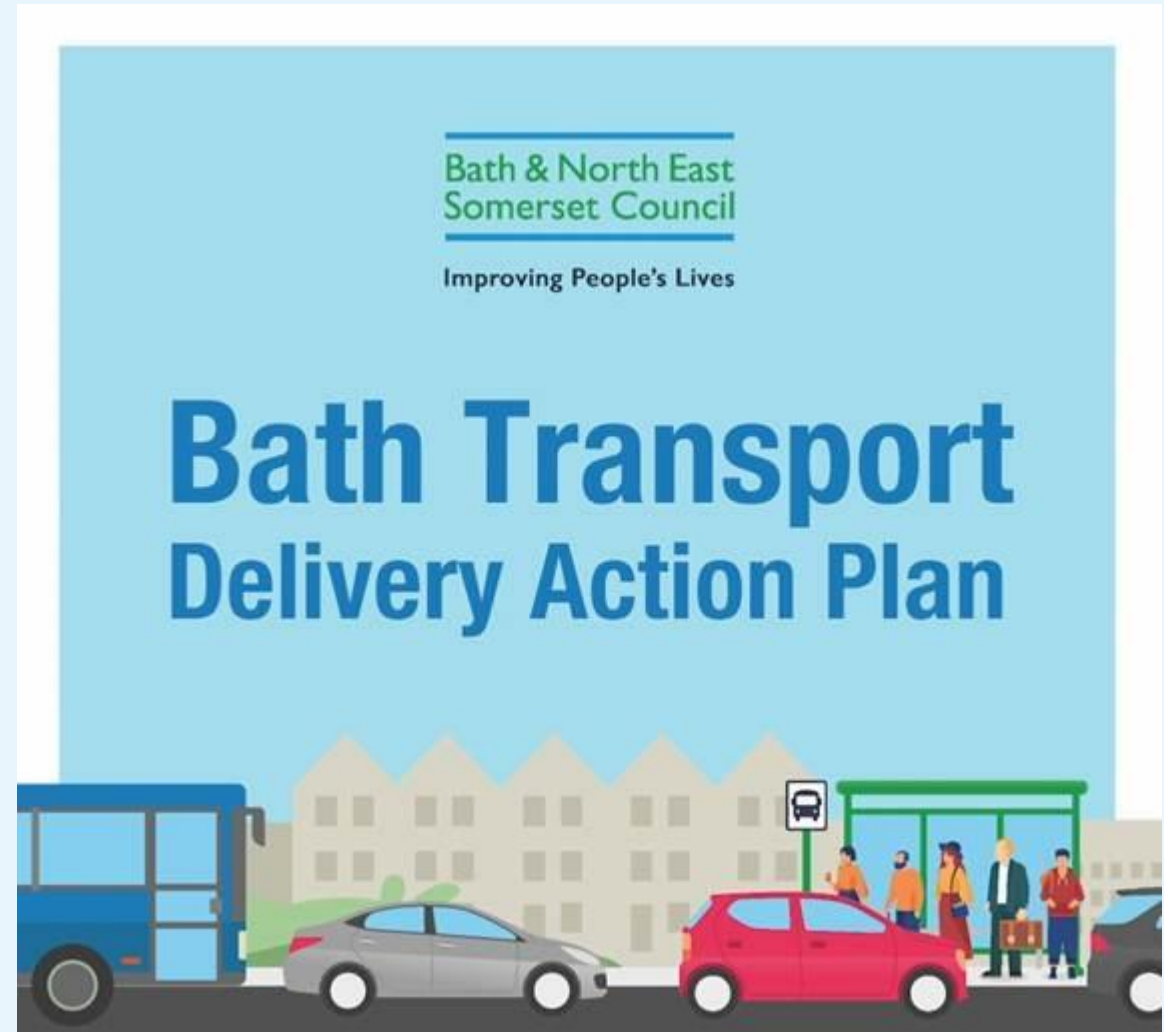


Stakeholder Packs

Help us to share information about the Transport Delivery Action Plan for Bath

Includes:

- Text for your newsletter, e-bulletin, parish magazine, blog and/or website.
- Social media posts
- Images
- Fast facts



Thank You

To learn more or give us your feedback, please visit or email:

www.bathnes.gov.uk/bathtransportplan

transport_planning@bathnes.gov.uk

Q&A

