
Bath & North East
Somerset Council

Improving People's Lives

Changes to Milsom Street

What do you think?



easy
read



Contents

Page

Introduction

3

What has happened so far

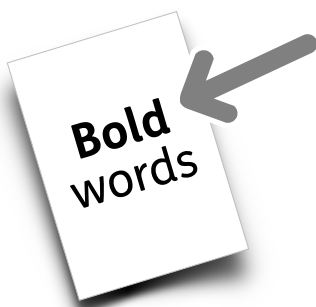
4

What we want to do now

6

For more information

9



In this easy read document, difficult words are in **bold**. We explain what these words mean in the sentence after they have been used.



Some words are [blue and underlined](#). These are links which will go to another website which has more information.

Introduction



Bath and North East Somerset Council is looking at changing Milsom Street in central Bath.



We want to:

- make it safer to cycle and walk in the area.



- help people to use the bus.

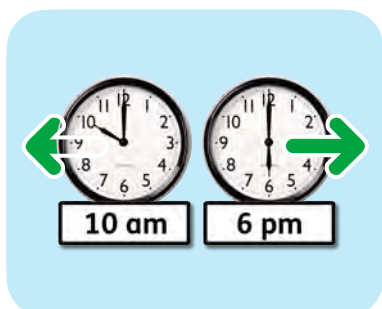


- reduce the number of cars and other vehicles in parts of central Bath.

What has happened so far



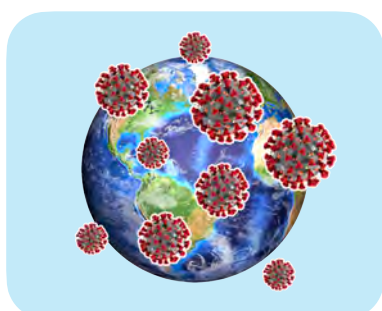
In June 2020, we said that only buses and emergency vehicles could use Milsom Street between 10am and 6pm.



Other vehicles have to use the street before 10am or after 6pm.



We did this so there would be more space for people, because during **COVID-19** people had to keep at least 1 metre away from each other.



COVID-19 is also called Coronavirus. It is an illness that has spread around the world. It can affect your lungs and breathing.



We asked local people what they thought about this change.



They said we should make some extra parking spaces and let the **Dial-a-Ride community transport** use the street again.



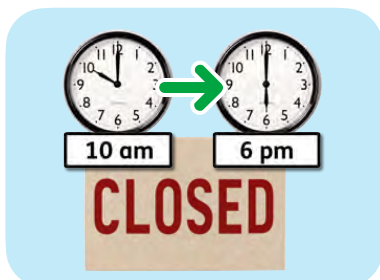
Dial-a-Ride community transport is fully accessible transport for people who can't use buses.



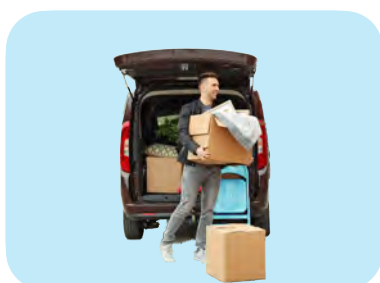
It works between 9:30am and 3:30pm Monday to Friday.

What we want to do now

For the next 6 months we want to see what it is like if:



- Milsom Street is closed to traffic between 10am and 6pm except for buses, emergency vehicles and Dial-a-Ride community transport.



- we make some new places on George Street where you can stop your car to load or unload things.



- we put 5 more disabled parking spaces in New Bond Street and 2 new disabled parking spaces on Quiet Street.



- we improve the walkway between Broad Street car park and Milsom Street.



During the next 6 months

During the next 6 months we will see how well these ideas work.



At the end of the next 6 months we will decide whether or not we should keep these changes to Milsom Street.



What do you think?

Please tell us what you think about these changes by:

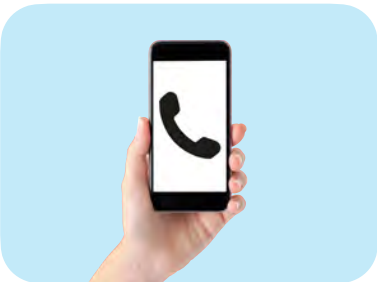


- answering the questions in our online questionnaire at:

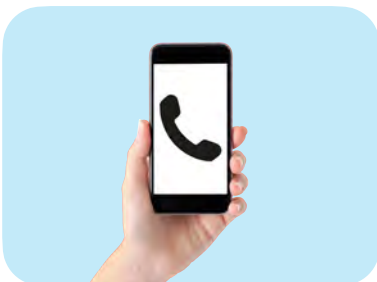
www.bathnes.gov.uk/milsomstreetconsultation



- post:
Bath & North East Somerset Council
Lewis House
Manvers Street
Bath
BA1 1JG



- email:
milsomstreet@bathnes.gov.uk



- phone: 01225 39 40 41



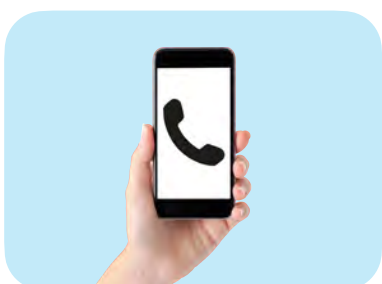
We will listen to what people say and decide whether or not to make these changes in the spring of 2022.

For more information



For more information, you can look at our website:

www.bathnes.gov.uk/milsomstreetconsultation



Or you can contact us by:

- phone: 01225 39 40 41



- email:
 - council_connect@bathnes.gov.uk
 - milsomstreet@bathnes.gov.uk