

A Primary School for your Child in Bath & North East Somerset 2025/2026





Family Information

Live Well B&NES is a web-based resource offering a wide range of information, signposting and resources for families and parents carers of children with additional needs.

Live Well B&NES Children & Families – parenting support and information, including Ofsted registered childcare and family activities

Live Well B&NES SEND Local Offer (Rainbow Resource) – information, signposting and support for families with a child (from birth – 25 years old) with special educational needs and/or a disability

Find out more:

<https://livewell.bathnes.gov.uk>

Follow us:

www.facebook.com/livewellbathnes

www.instagram.com/Youth Info Bathnes

The banner features the Live Well logo on the left, social media icons for Facebook (Live Well B&NES) and Instagram (Youth Info B&NES) in the middle, and a QR code on the right. Below the logo is the text 'Bath & North East Somerset Information, support and signposting'. The main navigation bar includes 'Explore our community directories' and the website URL 'livewell.bathnes.gov.uk'. Three service highlights are listed with corresponding images: 'Family information, including Ofsted registered childcare' (with a photo of a child), 'Supporting adults to live independent lives' (with a photo of two women), and 'Supporting children and young people aged 0-25 with additional needs (Rainbow Resource: our SEND Local Offer)' (with a photo of a young boy).

Special Educational
Needs and Disability
Information, Advice
and Support.

send ias bathnes

Parents/Carers – do you have concerns about your child’s education?

Can we help you to work with schools to help your child?

Sendias Bathnes (the new name for the SEND Partnership Service) offers confidential, impartial information, advice and support to children and young people (up to 25 years) with SEND and their parent carers.

Your child does not need an assessment or diagnosis of need, or an EHC plan for you to speak to one of our trained advisers.

For further information about how Sendias Bathnes can help your child, or to become a volunteer with the Service, please contact:

Sendias Bathnes Advice line: 01225 394382

Text: 07530 263401

Email: sendias@bathnes.gov.uk

Website: www.sendiasbathnes.org.uk

Introduction

Dear Parent and Carers

Welcome to the Bath & North East Somerset School Admissions Guide

This booklet is designed to give you information about the schools in your area and how you should apply for a school place. Starting school is a big step for both children and parents and for this reason we want to make the whole process of locating and applying for a primary school as simple as possible.

You are advised to contact the schools you would prefer your child to attend. They will give you a lot more advice and information.

The Local Authority works in partnership with schools and parents to provide high quality education for children. Parents are encouraged to play an active role in what is one of the most formative parts of children's lives.

I hope that you will find this booklet useful in finding a suitable school for your child and that together we can give our children the best possible start to education.

Yours sincerely

Christopher Wilford

Director of Education
August 2024

[Back to Contents Page](#)

Content

<u>Introduction</u>	4
<u>Deciding on a school preference</u>	6
<u>Some Useful Names and Addresses</u>	7
<u>Map</u>	8
<u>Apply online</u>	10
<u>Do's & Don'ts of applying for a school place & an explanation of equal preferences</u>	11
<u>Useful dates for your diary</u>	14
<u>Explanation of terms used in this booklet</u>	16
<u>How do I know which school will suit my child?</u>	20
<u>Details of previous admissions to schools</u>	22
<u>At what age do children start school?</u>	26
<u>How do I apply for a school place?</u>	28
<u>Who has parental responsibility?</u>	31
<u>What else do I need to consider in completing my application? Including addresses and moving house</u>	33
<u>What happens to my application?</u>	37
<u>Travel assistance to school – What you need to know</u>	42
<u>In-Year admissions</u>	45
<u>Admissions Criteria for Primary Schools</u>	48
<u>Infant, Junior and Primary Schools in Bath & North East Somerset</u>	75
<u>Mainstream Schools with a Resource Base and Special Schools for Primary Age Children</u>	84

About the information in this booklet

The information contained throughout this booklet refers to policies for Bath & North East Somerset LA only. This document can be made available in a range of Languages, Large Print, on tape, electronic and accessible formats. Please contact the Admissions & Transport Section on telephone number 01225 394312 for further information.

Deciding on a school preference for my child

What do I need to do to apply for a school place for my child?

1. Decide which schools you would like to consider making an application for your child to attend.
2. Read the information about those schools in this booklet. You may also want to read other information about those schools from their Ofsted reports etc. You can read this information online at the Ofsted website www.ofsted.gov.uk or the school may be able to give you a summary of the report.
3. Visit the schools you prefer and ask any questions about things you may wish to know.
4. Check the admissions criteria in the booklet for each school you prefer. You need to check to see if you are likely to gain a place. This is very important as some schools decide their own admissions criteria.
5. When you have all the information you want, decide the order in which to place the schools you prefer. Please consider your preferences carefully as after the closing date any changes made will be dealt with as a late application and your original application will be withdrawn. Your child would then not be considered for a school place in the first round of allocations made in April. You do not have to express a preference for more than one school, but you are recommended to do so as this will increase your chances of being offered a place at one of the schools you prefer. Stating up to three preferences will in no way reduce the chance of being offered your 1st preference school.
6. Make your application and submit it by the closing date.

This information is given in far more detail in the booklet. Please take time to read it as it will help you to make your application.

The information contained throughout this booklet refers to policies for

Bath & North East Somerset LA only.

Every effort has been made to ensure the accuracy of the information in this booklet. Some details may have changed since publication.

[Back to Contents Page](#)

Some Useful Names & Addresses

Bath & North East Somerset Council contacts

Admissions & Transport	Tel: 01225 394312 Email: admissions_transport@bathnes.gov.uk
Sendias Bathnes	Tel: 01225 394382 Text: 07530 263401
Attendance & Welfare Support Service	Tel: 01225 394241 Email: AWSS@bathnes.gov.uk
Free School Meals	Tel: 01225 394317 Website: Apply-free-school-meals
Special Educational Needs Section	Tel: 01225 394306

Other Local Authority school admissions teams

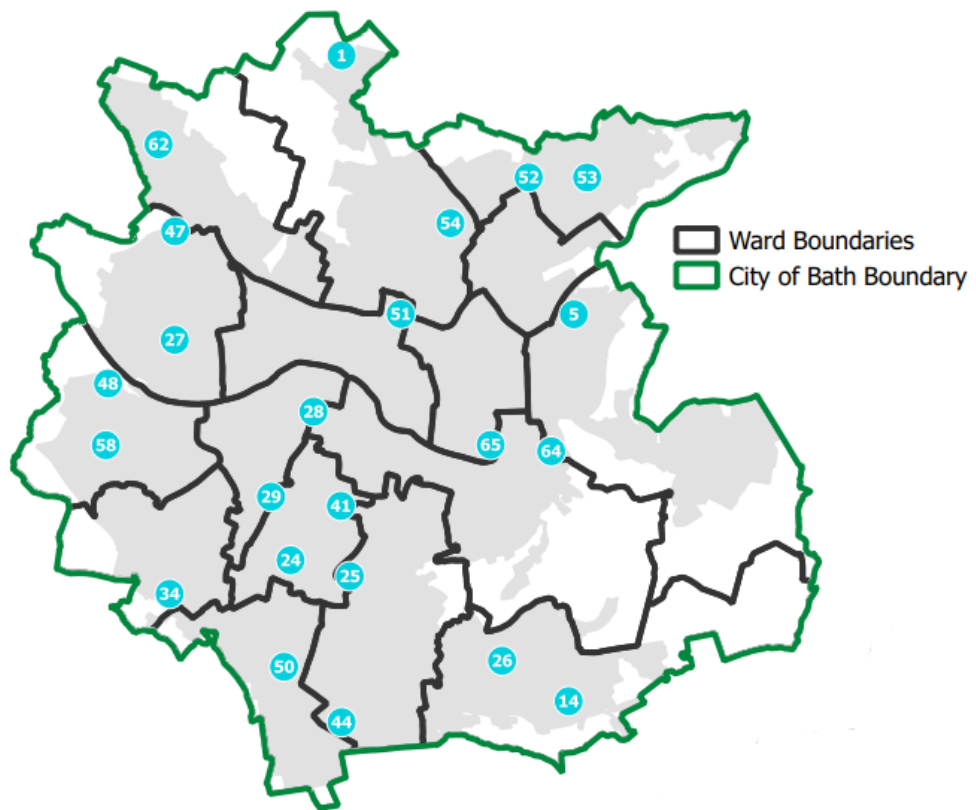
Bristol School Admissions	Tel: 0117 9037694 Email: Via Online Contact Form
North Somerset School Admissions	Tel: 01275 884078 Email: admissions@n-somerset.gov.uk
Somerset School Admissions	Tel: 0300 1232224 Email: schooladmissions@somerset.gov.uk
South Gloucestershire School Admissions	Tel: 01454 868008 Email: admissionsandtransport@southglos.gov.uk
Wiltshire School Admissions	Tel: 01225 713010 Email: admissions@wiltshire.gov.uk

Other useful contacts

Department for Education	Tel: 0370 000 2288
Local Government & Social Care Ombudsman	Tel: 0300 061 0614
Director of Education, (Church of England)	Diocese of Bath & Wells, Diocesan Education Office, Flourish House, Cathedral Park, Wells, BA5 2UG Tel: 01749 670777
Education Director / Advisor (Catholic)	Diocese of Clifton Schools Commission Alexander House, 160 Pennywell Road, Bristol, BS5 0TX Tel: 0117 902 5599
Black Families Education Support Group	Tel: 01225 787924 Email: manager@educationequals.org.uk Website: www.educationequals.org.uk/

If you have any difficulty in understanding any aspect of this booklet, please telephone the Admissions & Transport Team on 01225 394312 who will do their best to help.

[Back to Contents Page](#)

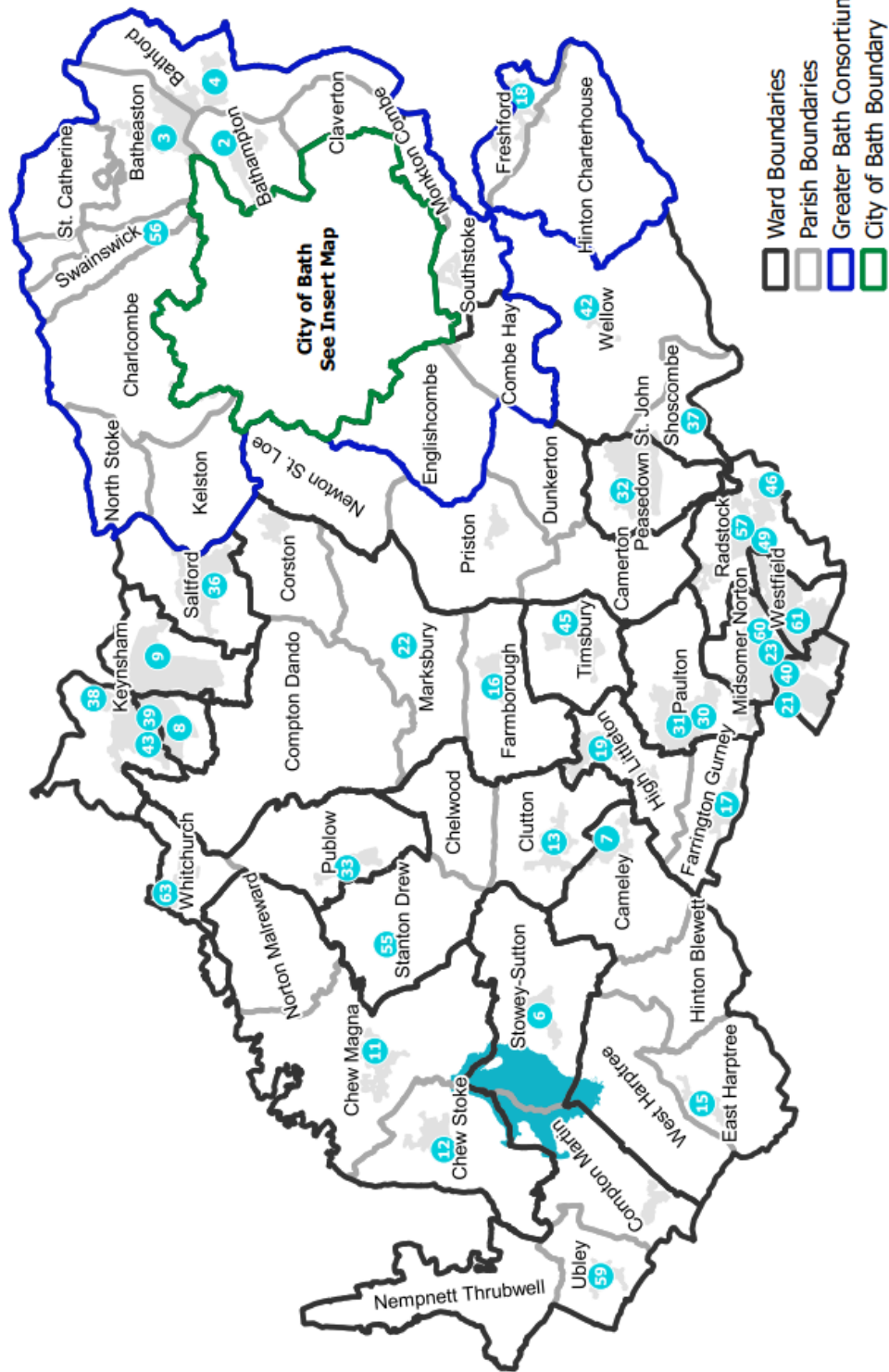


City Of Bath

- 1 Abbot Alphege Academy
- 5 Bathwick St Mary Church School
- 14 Combe Down C of E Primary
- 24 Moorlands Infant
- 25 Moorlands Junior
- 26 Mulberry Park Educate Together Primary
- 27 Newbridge Primary
- 28 Oldfield Park Infant
- 29 Oldfield Park Junior
- 34 Roundhill Primary
- 41 St John's Catholic Primary
- 44 St Martins Garden Primary
- 47 St Mary's Catholic Primary
- 48 St Michael's Junior Church School
- 50 St Philips C of E Primary
- 51 St. Andrew's Church School
- 52 St. Saviour's Infant Church School
- 53 St. Saviour's Junior Church School
- 54 St. Stephen's Primary Church School
- 58 Twerton Infant
- 62 Weston All Saints C of E Primary
- 64 Widcombe C of E Junior
- 65 Widcombe Infant

North East Somerset

- 2 Bathampton Primary
- 3 Batheaston Church School
- 4 Bathford Church School
- 6 Bishop Sutton Primary
- 7 Cameley C of E Primary
- 8 Castle Primary
- 9 Chandag Primary
- 11 Chew Magna Primary
- 12 Chew Stoke Church School
- 13 Clutton Primary
- 15 East Harptree C of E Primary
- 16 Farmborough Church Primary
- 17 Farrington Gurney C of E Primary
- 18 Freshford Church School
- 19 High Littleton Church of England Primary
- 21 Longvernal Primary
- 22 Marksbury C of E Primary
- 23 Midsomer Norton Primary
- 30 Paulton Infant
- 31 Paulton Junior
- 32 Peasedown St John Primary
- 33 Pensford Primary
- 36 Salford C of E Primary
- 37 Shoscombe Church School
- 38 Somerdale Educate Together Primary
- 39 St Johns C of E Primary (Keynsham)
- 40 St John's C of E Primary (Midsomer Norton)
- 42 St Julian's Church School
- 43 St Keyna Primary
- 45 St Mary's C of E Primary (Timsbury)
- 46 St Mary's C of E Primary (Writhlington)
- 49 St Nicholas' Church School
- 55 Stanton Drew Primary
- 56 Swainswick Church School
- 57 Trinity Church School
- 59 Ubley C of E Primary
- 60 Welton Primary
- 61 Westfield Primary
- 63 Whitchurch Primary



License number 10002334

Reproduced from the Ordnance Survey mapping with the permission of the Controller of Her Majesty's Stationery Office © Crown Copyright. Unauthorised reproduction infringes Crown copyright and may lead to prosecution or civil proceedings.

[Back to Contents Page](#)

BE ON TIME

APPLY ONLINE

From 12 September 2024 you can apply online for: -

- A Reception place in an Infant or Primary school for September 2025
- A Y3 place in a Junior school for September 2025

If you are a resident of Bath and North East Somerset and wish to apply for a reception place or a year 3 place in a Junior School within this authority or any other authority, you can do so by applying online as follows.

Visit the following web site to make your application online

[Admissions to Schools](#)

The closing date for Reception & Y3 applications is: -

- 15 January 2025

Why apply online?

Some benefits of applying online are: -

- It's quick and easy to use
- You can apply online 24 hours a day, seven days a week
- There is no risk that your application will be lost in the post
- You will receive email confirmation that your application has been received
- You can make changes to your application up to the published closing date
- You can log into the online system (with your password) on the published offer date to view the result of your application and you can accept your place online

For further information contact Admissions & Transport

on 01225 394312 or email admissions_transport@bathnes.gov.uk

Admissions & Transport, Lewis House, Manvers Street, Bath BA1 1JG

Remember to apply by the closing date of 15 January 2025

Do's & Don'ts of applying for a school place and an explanation of equal preferences

DO

- ✔ Complete a common application form online at [Admissions to Schools](#) or a paper form and submit by **15 January 2025**. If applying online **do**, make a note of your log in details and password as you will need this any time you use the online facility.
- ✔ Express a preference for **3** schools. This means you are increasing your chances of being offered a place at a school you like. All preferences are considered equally - *see further notes below about equal preferences*.
- ✔ Put the school names down on your application in the order you like them.
- ✔ Consider how you will get your child to school.
- ✔ Consider the admissions criteria that will be applied if the school is oversubscribed. This booklet provides details of the admissions criteria for schools and academies in this area.
- ✔ Consider naming your local school as **one** of your preferences. If you do not express a preference for your local school, you will not be considered for a place. This could lead to you receiving an offer of a place some distance from your home address and transport arrangements could prove difficult.
- ✔ Consider visiting schools and look at copies of the school prospectus for further information to help you decide which schools you want to apply for.
- ✔ Mention Sibling links. If you expect to have more than one child on roll at a school, name the youngest sibling as opposed to the eldest. Read the definition of a sibling in the booklet.
- ✔ Check whether any school you are interested in asks you to complete a supplementary information form (SIF). This is generally a requirement of Voluntary Aided Schools and Academies. Details can be found in their admission policies, copies of which are provided in this booklet.
- ✔ Return SIFs **direct to the individual Voluntary Aided School or Academy** by the requested date which is usually the same as the closing date but remember that you must still complete a common application form as well. If you only complete a SIF, you have **not** made an application for a school place.
- ✔ Use the address where you are living as of **15 January 2025** and tell us if you know your address is going to change **before 31 August 2025**. **(For more details about address changes and documentary evidence see page 34)**
- ✔ Tell us if your circumstances change.
- ✔ Do fill out all parts of the application form carefully and read any explanatory notes.
- ✔ Be honest. You need to make sure the information you give us is accurate. We may withdraw the offer of a school place where the application was fraudulent or intentionally misleading.

DON'T

- ✘ Miss the deadline for submitting your application form. If you miss the deadline your preferences will not be considered until places have been offered to all children for whom we received an application by the submission date of **15 January 2025**.
- ✘ Name the same school three times: this will be considered as one preference. Naming **only** one school does **not** increase your chance of being offered a place at that school.
- ✘ Name a Fee-Paying Independent school as one of your preferences. These will be removed as we do not deal with their admissions.
- ✘ Name a school if you don't want a place there.

- ✘ Assume that you do not need to apply for the school where you already have other children in attendance – you **must** complete an application form.
- ✘ Assume that Bath & North East Somerset offers automatic priority to siblings. The Council offers priority to **local siblings only**. You will need to check the admissions criteria in this booklet and the individual school admission arrangements to see whether you are likely to be considered under the local sibling criterion.
- ✘ Assume that if one child in the family is offered a place that other children in the family (either older or younger) will also be able to gain a place at the same school.
- ✘ Assume that you do not need to apply for your local school. You must complete an application form. Even if you have spoken to your local school to inform them that you wish to be considered for a place, this does not constitute an application and is not part of the application process.
- ✘ Assume that just because your child attends nursery or pre-school at a school that you will automatically be offered a place. You will need to apply for a place in reception regardless.
- ✘ Assume that a nursery or pre-school establishment that your child attends will make an application for a school place on your behalf.
- ✘ Assume that the Local Authority or a school know that you want your child to attend a particular school without your making an application to be considered for a place.

An explanation about equal preferences

Every year we receive questions from parents who want to know what equal preference means and how it works in practice if they put more than one school name down on their application form. Hopefully the following explanation will help in your understanding.

We recommend you name 3 school preferences on your application as this means that your child can be considered for a place at each of the schools you name.

We publish an admission number for each school. After the closing date we will then know how many preferences have been received for all the schools in our area. At this stage we know whether the individual schools are either under or over their admission number with the preferences that have been received for them.

If the school is undersubscribed, then any of the children whose parents expressed a preference for the school would initially qualify for a place. However, the preferences could be a combination of 1st, 2nd, and 3rd preferences.

If the school is oversubscribed, then the admissions criteria must be applied to all the preferences that have been made and the children are initially listed or ranked against the admissions criteria. When ranking the children, all 1st, 2nd, and 3rd preferences are considered equal. In this way the Local Authority will initially see that some children fall within the admission number for more than one of the schools that were named as preferences on the application. A child can only be offered one school place so in these cases we look at the order you named the schools on your application form and of the schools you are initially qualifying for we keep the highest preference school as the offer.

Therefore, it is important to list the schools in your priority order. The other lower preference school place that your child initially qualified for is then released for another child and the Local Authority continue to use the ranked list to establish who next qualifies for the place if the school is oversubscribed.

Using the equal preference process means that a school place could be allocated to someone who has named it as a 2nd or 3rd preference, over someone that has named it as a 1st, this would be because they have been ranked higher in the over-subscription criteria but could not be offered their 1st preference.

It must be acknowledged that the Local Authority cannot always meet parental preferences even if more than one school has been named on the application form. However, by naming more than one preference you are maximising your chances of being offered a place at a school you like, and it does not decrease your chance of qualifying for a place at your 1st preference school.

If you decide to **only** name one school as a preference you can only be considered for a place at that school and this action will **not** increase your chance of being offered a place.

Where parental preference of a school or schools cannot be met then the Local Authority has to offer an alternative school place if you live in its area. The school place offered may not necessarily be close to your home address. It will be the nearest school **with** a place available.

[Back to Contents Page](#)

Useful dates for your diary

Date	Key Dates for Parents	What the Council is doing
12 September 2024	Online admissions applications will be available to complete	
Beginning of September		Council starts to receive applications
September to January	Schools hold open days and evenings	
Midnight 15 January 2025	Closing date for reception and junior applications	
By 24 January 2025	Documentary evidence must have been provided by those families moving address	LA sends a report of applications received to other authorities
By 29 January 2025		LA sends a report of applications received to other authorities
By 7 February 2025		LA sends a report of applications received to all schools
By 28 February 2025		All schools send a list of pupil rankings to the LA
By 21 March 2025		B&NES LA informs other LA's of the initial outcome of applications made by their residents for schools in B&NES, and other LA's will give the outcome of B&NES residents being offered places at schools in their LA
On 4 April 2025		B&NES will send details of final offers to be made to other LA's for their residents
By 11 April 2025		All schools informed by the LA of final offers up to the admission number and of refusals for oversubscribed schools

Date	Key Dates for Parents	What the Council is doing
16 April 2025	Parents who made an online application by the closing date can login to their account to view and respond to the offer made. Parents who made a paper application will receive a letter sent out by 2 nd class post	
01 May 2025	Deadline for parents to respond to offer	
01 May 2025	Deadline for late applications for reception and junior	
16 May 2025	Deadline for on-time appeals written submission to be lodged	LA exchanges info with schools and other LA's on late applications, on-time applications still seeking a place and places not accepted
End of May/early June 2025	Parents start to hear about re-allocated places, once completed	Places which become available are re-allocated to children still seeking a place
End of June onwards	Appeals are heard	
Up to and including 31 August 2025	Admissions will continue with further rounds of allocations until the process ends	

[Back to Contents Page](#)

Explanation of terms used in this booklet

There currently are a total of 64 maintained infant, junior or primary schools within the Bath and North East Somerset area together with three special schools covering the primary age range.

Admission Criteria (Oversubscription Criteria)

These describe the way in which the Admission Authority gives priority to children when it allocates places at individual schools. The criteria are outlined in this booklet.

Academy Schools

In these schools the Academy Trust is responsible for admissions and set their own criteria. The oversubscription criteria for all Academy Schools within Bath and North East Somerset are outlined in this booklet.

Community Schools

In these schools the Local Authority (LA) is responsible for admissions and sets the criteria which are shown in this booklet.

CSA

Compulsory School Age. This is from the start of the term after a child's fifth birthday. It doesn't mean the child has to be in a state funded school: it could be any form of full-time education, including elective home education.

Denominational Schools

The denominational schools in Bath and North East Somerset are run either by the Church of England or the Catholic Church in partnership with the LA. The Governors in Voluntary Aided (VA) schools are responsible for admissions and set their own criteria. The oversubscription criteria for all VA schools are outlined in this booklet.

Direct Line Distance*

** Unless otherwise stated in individual schools' admissions policy these definitions apply.*

Distance will be measured in a straight line from the address point of the child's home address to the address point of the school as defined by the Local Land and Property Gazetteer (LLPG). Measurements will be determined using the Local Authority's GIS computerised mapping system with those living closer to the school receiving the higher priority.

Home Address

This is the child's permanent address where he or she generally resides with their parents. Temporary addresses may not be used to obtain school places.

Infant Class Size

Classes are limited to 30 children with a single teacher in Reception, Year 1, and Year 2.

In-Year Admissions

Applications for places at a school in an existing year group once the academic year has started from September each year.

Looked after Children* (see also *Previously looked After Children*)

As defined in Section 22 of the 1989 Children Act. These children however are often referred to as children in care. In relation to school admissions legislation a 'Looked after child' is a child in public care at the time of the application to a school. * Documentation will need to be provided to Bath & North East Somerset Council as proof of care status.

Multiple Births

If a school is oversubscribed and a child from a multiple birth has qualified for the last available place within the admission number but the other child(ren) from that multiple birth have not qualified for a place. Please refer to Admission Arrangements for the school as to how these will be considered.

National Curriculum Year Groups

Year	Group	Age of Pupil
R	Infant Years (Keystage 1)	4-5 years
Y1		5-6 years
Y2		6-7 years
Y3	Junior Years (Keystage 2)	7-8 years
Y4		8-9 years
Y5		9-10 years
Y6		10-11 years

National Offer Day

These are national dates for announcements about school place offer decisions. For primary school offers this would be 16 April for on-time applications. If this date falls on a weekend or a public holiday, we will issue offers on the next working day.

Oversubscribed Schools

These are schools where the number of applications is more than the admission number, which is the minimum number the school must admit.

Parent

This includes all those people who have parental responsibility for a child as set out in the Children Act 1989.

Published Admission Number (PAN)

The Admission Number is the number of children which a school is normally required to admit in each year group. All schools would normally offer places up to the Admission Number and, once that is reached, any further admissions would normally be by appeal to an Independent Appeals Panel. The Admission Number for each school can be found in the list of schools and the admissions criteria for primary schools.

Previously Looked After Children (PLAC) & Internationally Adopted Previously Looked After Children (IAPLAC)*

Previously Looked after children (PLAC) are children who were looked after but ceased to be so because they were adopted or became subject to a Child Arrangement order or special guardianship order **as well as** Internationally Adopted Previously Looked after children (IAPLAC), those children who appear to the admission authority to have been in state care outside of England and ceased to be in state care as a result of being adopted. * Documentation will need to be provided to Bath & North East Somerset Council as proof of care status.

Internationally Adopted Previously Looked After Children (IAPLAC)*

A child is regarded as having been in state care in a place outside of England if they were accommodated by a public authority, a religious organisation, or any other provider of care whose sole purpose is to benefit society and ceased to be in state care as a result of being adopted. * Documentation will need to be provided to Bath & North East Somerset Council as proof of care status.

Siblings*

** Unless otherwise stated in individual schools' admissions criteria these definitions apply.*

A sibling refers to children who are:

- brother or sister or half brother or sister.
- adopted brother or sister.
- stepbrother or sister:
- the child of the parent/carer's partner, and in every case the child should be living in the same family unit at the same address.

Special Schools and Special Units

There are three special schools and three primary schools with Resource Bases within the area, for children who have particular special education needs. Admission to these schools is restricted to children with an Education, Health, and Care plan (EHCP) and a separate leaflet is available on this. If you have an enquiry about admissions to special schools, please telephone 01225 394306.

Undersubscribed Schools

These are schools where the number of applications is less than the admission number.

Voluntary Aided Schools (VA)

In a VA school the church, through the school governors, has a greater say in the running of the school, and is responsible for admissions to the school. Please refer to the booklet for details of VA Schools Admission Criteria.

Accessible Schools

Bath & North East Somerset Council is aware that some of our older schools, are not easily accessible for physically disabled children or adults. Where possible, we work to make schools more accessible and aim to have at least one primary school fully accessible in each area. A number of more modern and new schools provide fully accessible facilities. The table gives details of these schools.

Parents are still free to express a preference for a non-designated school for their disabled child, but only 'reasonable' adjustments can be made to accommodate them at these schools. This will not include major building alterations or additions but could include limited adaptations such as fitting an essential handrail or small ramp. Parents are encouraged to visit schools and discuss their child's needs with the Head Teacher to ensure the accommodation is suitable.

In addition to the schools named in the table there is extra support for those with a hearing impairment at Weston All Saints C.E. Primary School.

The following primary schools are generally accessible but may not be fully accessible.

North & Central Bath	St Andrews Church School Widcombe Infant Widcombe Junior
North West Bath	St Mary's Catholic Primary
South East Bath	St Martin's Garden Primary Freshford Church School
Paulton	Paulton Infant Paulton Junior
Keynsham & Saltford	Castle Primary
Chew Valley	Chew Stoke Church Primary
North East Bath	Batheaston Church School
Midsomer Norton	Midsomer Norton Primary
Peasedown	Shoscombe Church School
Radstock	St Mary's CE Primary (Writhlington)
Chew Valley	Bishop Sutton Primary School

Schools listed above are generally accessible but will not be suitable for all children with disabilities or additional needs. Where possible parents should visit the school and discuss its suitability with the Headteacher and teaching staff.

The following modern primary schools are all fully accessible.

Radstock	Trinity Church School St Nicholas Church School
South Central Bath	St John's Catholic Primary
South East Bath	Mulberry Park Educate Together Primary
Keynsham & Saltford	St Keyna Primary Somerdale Educate Together Primary Two Rivers Primary
North West Bath	Abbot Alphege Academy
Midsomer Norton	Norton Hill Primary

[Back to Contents Page](#)

How do I know which school will suit my child?

You can exercise a preference when deciding on a school for your child, **a preference that is limited only by the number of places available at any school**. To help you make your decision, it is important you obtain as much information as possible about the schools you are considering.

You should, where able to, visit local schools and obtain as much information as possible. All schools publish a school prospectus in which you will find an outline of: -

- the school's aims and objectives
- details of the curriculum offered
- National Curriculum Assessment results at the ages of 7 and 11
- attendance figures
- out of school activities
- details of policies such as behaviour and discipline.

Governing Bodies also publish a report to Parents each year and this summarises the school's achievements.

The Office for Standards in Education (OFSTED) now inspects all schools. Reports are available as is a copy of the school's action plan for development that is written after the inspection report is published. These reports can be seen on the Ofsted website or in the schools themselves.

Research has consistently shown that several factors are good indicators in helping you decide whether a school will suit your child. You may wish to consider these when you visit schools before making your decision. Some of the more important factors are: -

- the school places importance on working with parents
- there is a welcoming atmosphere
- staff have high expectations of the children and there is an emphasis on each child's achievements
- the school supports children particularly where there are additional needs
- a wide range of out of school activities is available for all ages and abilities
- other parents are involved in the work of the school and speak highly of it
- the school is well led by the headteacher and governors
- there is a plan showing how the school hopes to develop over the next few years
- the children's work is displayed with care
- governors are fully involved in the life of the school and parents have easy access to them
- the school makes good use of the LA and its support services.

This list is by no means complete and you will be able to judge a great deal from the atmosphere of the school during your visit if this has been possible. All children and all schools are different, and it is helpful if you can visit a number of schools before deciding which school is most likely to meet your child's needs.

You will have heard much about 'parental choice', and it is important for you to consider: -

- **the admissions criteria** - are you likely to get a place in your preferred school?
- **travel** - if your preferred school is not the closest to your home, consider the journey and will you be able to get your child to that school?

This booklet will help you make these important decisions.

Summary

You have the right to express a preference for the school(s) you prefer but do not have a guaranteed choice as we may not be able to meet your preference. We will do all we can to offer your child a place in the school you prefer but remember that some schools become full, and ***we can only offer places up to the school's Published Admission Number (PAN).***

See also page 12 for an explanation about equal preferences.

[Back to Contents Page](#)

Details of previous admissions to schools

Academic Year 2024/25

Information of on time applications received for Infant, Junior and Primary Schools. Number of preferences received, and places offered on 16 April and if a school was oversubscribed and refusals were made, category and distance of the last place offered, if applicable.

School	1 st – 3 rd prefs	Admission No.	Places offered and where applicable refusals for 2024/25	Places offered and where applicable refusals for 2023/24	Places offered and where applicable refusals for 2022/23
Abbot Alphege CE Academy	3	15	0 Offers	9 Offers	15 Offers
Bathampton Primary	63	30	25 Offers	24 Offers	26 Offers
Batheaston Church School	58	30	28 Offers	28 Offers	27 Offers
Bathford Church School	36	30	12 Offers	16 Offers	19 Offers
Bathwick St. Mary Church School	83	30	30 Offers	30 Offers Category 7 1.206 miles 3 refusals	30 Offers Category 7 0.494 miles 12 refusals
Bishop Sutton Primary	41	30	19 Offers	25 Offers	25 Offers
Cameley Primary	24	30	18 Offers	21 Offers	20 Offers
Castle Primary	99	60	**61 Offers	57 Offers	40 Offers
Chandag Infant (from Sept 2023 Infant and Junior became a Primary)	79	60	37 Offers	51 Offers	60 Offers Category D 1.436 miles 2 refusals
Chandag Junior	N/A	N/A	N/A	N/A	62 Offers
Chew Magna Primary	35	15	13 Offers	12 Offers	14 Offers
Chew Stoke Church Primary	51	28	25 Offers	26 Offers	22 Offers
Clutton Primary	22	25	12 Offers	19 Offers	17 Offers
Combe Down C. of E. Primary	130	60	60 Offers Category 4 0.689 miles 11 refusals	60 Offers Category 7 0.738 miles 14 refusals	56 Offers
East Harptree C. of E. Primary	19	15	10 Offers	8 Offers	15 Offers
Farnborough Church Primary	38	25	17 Offers	28 Offers	22 Offers
Farrington Gurney C. of E. Primary	23	15	7 Offers	15 Offers	15 Offers
Freshford Church School	43	20	20 Offers Category E 4.072 miles 2 refusals	20 Offers Category D 0.397 miles 10 refusals	20 Offers Category E 1.243 miles 6 refusals
High Littleton C. of E. Primary	39	25	22 Offers	21 Offers	25 Offers Category E 1.419 miles 1 refusal
Longvernal Primary	47	30	28 Offers	33 Offers	23 Offers
Marksbury C. of E. Primary	25	15	12 Offers	9 Offers	14 Offers

School	1 st – 3 rd prefs	Admission No.	Places offered and where applicable refusals for 2024/25	Places offered and where applicable refusals for 2023/24	Places offered and where applicable refusals for 2022/23
Midsomer Norton Primary	67	45	26 Offers	22 Offers	22 Offers
Moorlands Infant	148	60	60 Offers Category D 0.690 miles 17 refusals	60 Offers	60 Offers
Moorlands Junior	96	60	60 Offers	60 Offers Category 3 1.630 miles 3 refusals	51 Offers
Mulberry Park Educate Together Primary	57	30	28 Offers	30 Offers	30 Offers Category 3 1.061 miles 4 refusals
Newbridge Primary	110	60	43 Offers	54 Offers	52 Offers
Norton Hill Primary	114	60	60 offers Category E 2.418 miles 3 refusals	30 offers Category D 0.626 miles 18 refusals	45 offers Category B 2.356 miles 8 refusals
Oldfield Park Infant	127	60	56 Offers	60 Offers	60 Offers Category C 3.293 miles 1 refusal
Oldfield Park Junior	108	60	60 Offers Category C 0.906 miles 8 refusals	52 Offers	60 Offers Category C 2.025 miles 2 refusals
Paulton Infant	63	90	54 Offers	57 Offers	60 Offers
Paulton Junior	63	90	64 Offers	65 Offers	62 Offers
Peasedown St. John Primary	52	60	37 Offers	41 Offers	51 Offers
Pensford Primary	35	15	15 Offers Category D 2.125 miles 5 refusals	13 Offers	12 Offers
Roundhill Primary	39	60	26 Offers	19 Offers	30 Offers
St. Andrew's Church School	75	30	30 Offers Category E 0.946 2 refusals	30 Offers Category D 19 refusals	30 Offers Category G 1.068 miles 2 refusals
St. John's C. of E. Primary (Keynsham)	86	30	30 Offers Category D 0.305 miles 4 refusals	30 Offers Category D 0.319 miles 11 refusals	30 Offers Category D 0.400 miles 10 refusals
St. John's C. of E. Primary (MSN)	73	60	45 Offers	47 Offers	35 Offers
St. John's Catholic Primary	114	45	44 Offers Category 6.6 1.067 miles 3 refusals	48 Offers	41 Offers
St. Julian's Church School	32	16	16 Offers Category E 2.180 miles 1 refusal	16 Offers	16 Offers Category E 3.503 miles 2 refusals

School	1 st – 3 rd prefs	Admission No.	Places offered and where applicable refusals for 2024/25	Places offered and where applicable refusals for 2023/24	Places offered and where applicable refusals for 2022/23
St. Keyna Primary	106	60	40 Offers	30 Offers Category C 0.265 miles 17 refusals	30 Offers Category C 0.530 miles 3 refusals
St. Martins Garden Primary	42	30	21 Offers	26 Offers	23 Offers
St. Mary's C. of E. Primary (Timsbury)	31	30	22 Offers	23 Offers	16 Offers
St. Mary's C. of E. Primary (Writhlington)	23	30	9 Offers	18 Offers	16 Offers
St. Mary's Catholic Primary	48	30	16 Offers	24 Offers	24 Offers
St. Michael's Junior Church School	44	60	39 Offers	39 Offers	30 Offers
St. Nicholas' C. of E. Primary	23	60	18 Offers	12 Offers	22 Offers
St. Philip's C. of E. Primary	79	40	40 Offers Category D 0.773 miles 3 refusals	40 Offers	40 Offers Category D 0.464 miles 14 refusals
St. Saviour's Infant Church School	46	60	29 Offers	35 Offers	39 Offers
St. Saviour's Junior Church School	28	60	28 Offers	36 Offers	32 Offers
St. Stephen's Church School	93	60	57 Offers	55 Offers	49 Offers
Saltford C. of E. Primary	115	60	60 Offers Category D 2.091 miles 6 refusals	60 Offers	48 Offers
Shoscombe Church School	28	17	16 Offers	17 Offers Category 5 1.455 miles 2 refusals	15 Offers
Somerdale Educate Together Primary	45	30	28 Offers	30 Offers Category 3 0.204 miles 17 refusals	30 Offers Category 3 0.605 miles 4 refusals
Stanton Drew Primary	14	10	7 Offers	4 Offers	6 Offers
Swainswick Church School	25	12	8 Offers	9 Offers	12 Offers
Trinity Church School	34	30	22 Offers	19 Offers	23 Offers
Twerton Infant	43	60	38 Offers	23 Offers	37 Offers
Two Rivers C. of E. Primary	110	30	32 offers	19 offers	21 offers
Ubley C. of E. Primary	17	15	8 Offers	9 Offers	12 Offers
Welton Primary	37	28	13 Offers	12 Offers	26 Offers
Westfield Primary	63	60	41 Offers	41 Offers	52 Offers
Weston All Saints C. of E. Primary	103	90	52 Offers	59 Offers	62 Offers
Whitchurch Primary	105	45	43 Offers	26 Offers	28 Offers

School	1 st – 3 rd prefs	Admission No.	Places offered and where applicable refusals for 2024/25	Places offered and where applicable refusals for 2023/24	Places offered and where applicable refusals for 2022/23
Widcombe Infant	170	60	60 Offers Category 4 2.169 miles 3 refusals	60 Offers	60 Offers Category 4 0.941 miles 12 refusals
Widcombe C. of E. Junior	90	60	60 Offers Category 8 0.516 miles 3 refusals	60 Offers Category 3 3 refusals	60 Offers Category 5 0.596 miles 2 refusals

**The admission number has been breached by 1 to allow for a child from a multiple birth to be offered a place.

[Back to Contents Page](#)

At what age do children start school?

The information below will help you decide when your child should start school.

Primary school age provision in Bath & North East Somerset includes schools and academies. Academies are independent schools within the state sector. In this booklet, the word 'schools' includes both schools and academies unless a different procedure applies.

Children aged four

So that children can benefit from three full years of infant education, children are normally admitted to Bath & North East Somerset schools in the September following their fourth birthday. If your child was born between **1 September 2020 and 31 August 2021**, he/she can start school in **September 2025** and will join the reception class at the age of four.

Children aged five

Legally, children do not have to be in full time education until the term following their fifth birthday. This is the compulsory school age. Parents/carers can request that the date their child is admitted to school is deferred until later in the school year or until the child reaches age five in that school year.

Deferred admission

Parents/carers can request that their child attends part-time until they reach compulsory school age, or that the date their child is admitted to school is deferred until later in the same academic year. Parents/carers should indicate at the time of accepting a place that they wish to defer their child's admission until later in the school year. Deferral dates are set out as follows:

Child's fifth birthday	Can defer until	If I defer which class will my child join?
1 September – 31 December	January	Reception class
1 January – 31 March	April	Reception class

Parents/carers are advised to carefully consider the implications of deferring their child's start date to school. Some parents/carers consider that it is better for their child to start school at the same time as other children in their age group, i.e., from the beginning of the academic year (September) to help their child settle and adjust to school life.

If parent/carers do not take up the reserved place during the school year and by the start of Term 5 at the latest, they will need to reapply for a year 1 place for the following academic year.

Delayed admission

Parents/carers may request that their child is admitted outside of their normal age group. It is the responsibility of the admission authority of the school to make the decision based on the circumstances of each case. Factors considered by an admission authority when considering admission outside the normal age group include:

- the needs of the child and the possible impact on them of entering Year 1 without having first attended the reception class
- in the case of children born prematurely, the fact that they may have naturally fallen into the lower age group if they had been born on their expected date of birth
- whether delayed social, emotional, or physical development is adversely affecting their readiness for school

Parents/carers should think very carefully about the implications of admitting their child outside the normal age group and ensure that joining a lower year group is in the best interests of the child. Note: The local authority is the admission authority for community and voluntary controlled schools. The governing body is the admission authority for foundation and voluntary aided schools, and the academy trust is the admission authority for academies and free schools.

Admission for summer born children/delaying when your child starts primary school

Parents/carers may request for their child to be held back a school year (to start school in the September after their fifth birthday) if the following both apply:

- they were born in the summer (1 April to 31 August)
- you don't think they're ready to start in the September after they turn four

To request a delayed admission, parents/carers must apply for a place during the standard application process timeline for their child's chronological age group, stating their reasons for requesting a delayed entry to the following year. It is for own admission authority schools to make the final decision, i.e., academies and voluntary aided schools. In respect of community and voluntary controlled schools, the local authority will decide in consultation with the head teacher.

Details of the council's policy on summer born children can be found on the council's website under [Delayed and Accelerated Policy](#)

Starting junior school

In Bath & North East Somerset there are a number of infant schools 'paired' to junior schools. If your child attends an infant school, they will leave at the end of Year 2, and you will need to make an application by the closing date of 15 January for them to start in year 3 at a junior school. Please note there is no automatic transfer from an infant to a junior school.

Parents/carers have the right to express a preference for a junior school and if a place at the parents'/carers' preferred school is not available then they have the right of appeal to an independent appeal panel.

For children in year 2 and on roll at a primary school, they will transfer automatically to year 3 at the same school.

If you are considering applying for a place in year 3 at a primary school for your child(ren) you will need to apply for a place for the September that they will start in Year 3 through the In-Year application process, details of which are set out in "In-Year admissions" section.

Attendance at a nursery class

Where a child attends a nursery class or children's centre located on a school site, parents/carers will still need to apply for a school place. Attendance at a nursery class or children's centre does not guarantee a place at an infant or primary school. * or give a child any higher priority for a place. A separate application must be made for transfer from nursery provision to primary school.

** Unless otherwise stated in individual schools' admissions policy*

[Back to Contents Page](#)

How do I apply for a school place?

Don't be late! If your application is late, it may affect your chances of getting a place at one of your preferred schools. The closing date for all applications is 15 January 2025.

In order that your child can be considered for entry to school for the school year **2025/26** you must complete and submit the common application form by **15 January 2025**. Completed common application forms for residents of Bath & North East Somerset must be returned directly to Bath & North East Somerset Admissions and Transport Team.

Parents/carers who do not live in Bath & North East Somerset but who wish to apply for a place at a school in Bath & North East Somerset must complete the common application form available from the local authority in which they live. If an application form is received from a parent/carer living in England but outside the administrative area of Bath & North East Somerset, the form will be returned to the parent/carer.

Should any parent/carer include on their application form a preference for a fee-paying independent school, the independent school preference will be disregarded and the remaining preferences for schools will be given a higher ranking than that shown on the original application form.

All parents/carers must complete the common application form.

Who should apply for a school place?

Applications should be made by the person who has parental responsibility as the main carer as defined in the Children Act 1989 ([see who has parental responsibility](#)). Parents are asked to confirm this on the application form. Where parents share parental responsibility for a child but live separately if two applications are received from the child's parents the LA will ask them to determine which application it should consider, and which application should be withdrawn. This is because the LA will offer only one school place to a child at any one time. If the parents cannot agree they should resolve the issue through the court system. For example, to obtain a 'Specific Issues Order' which specifies which parent has responsibility to make decisions on school preferences.

However, in the absence of any Order the application received from the parent who receives Child Benefit for the child at the time of the closing date will be the only one considered. Parents may be asked to provide supporting documentation confirming receipt of Child Benefit. Where the parent/carers are not entitled to Child Benefit the LA will ask for proof of the child's home address as held by the doctor's surgery at the point of application. Bath & North East Somerset Council cannot become involved in disputes between parents/carers.

Completing the common application form

Parents/carers of children resident in Bath & North East Somerset have two options for completing the common application form:

- [Apply Online](#) You may apply using your mobile/tablet/handheld device
- Print and complete the application form available to download at [Admissions to Schools](#) and return it to the address indicated on the form or by email to admissions_transport@bathnes.gov.uk

Applying online

You will need to have an email account set up before registering to make your application online. You will be asked to complete security details, such as email and password and then you'll receive a code to access the portal to make your application. Once you have completed and submitted an online application form you will receive an email to confirm your application has been received.

Online applications: You may change the details on your application up until the closing date; though it is very important to remember to re-submit each time you view or make changes to your application. If you do not re-submit your application after making changes it will not be submitted as on-time and your application will be treated as late.

Completing and returning a paper application form

Completed common application forms for residents of Bath & North East Somerset must be returned directly to Bath & North East Somerset Admissions and Transport Team. Applications for a place will be considered only if parents/carers have submitted the completed common application form by the closing date of **15 January 2025**. Any change in preference received before the closing time and date will supersede all previous applications which will be withdrawn.

Change of school preferences or school preference order

After the closing date of 15 January 2025, parents can make a **change to their school preference or a change to their school preference order, but they do so on the understanding that their previous application will be withdrawn. If parents decide to change, then their child will not be considered for a school place in the first round of allocations even if the original application was received before the closing date.** The change of preference or preference order will be considered as a completely new late application.

Please note: Each LA own and hold records for the children resident in their LA at the start of the applications process and as such it is only the original LA that can amend any details relating to the child's application. Another LA cannot make any changes to a different LA's records but should be advised of any changes by the LA which owns the original record. Any changes received and accepted by this LA, as the home LA, which involve schools within another LA area will be passed to that LA as soon as possible.

Supplementary Information Forms (SIF's)

All parents/carers must complete the common application form. However, individual admission authorities for academies, voluntary aided and foundation trust schools may wish to use supplementary information forms (SIF's) to collect additional information in order to apply their over-subscription criteria. Parents/carers will need to contact the individual schools for information.

Admission for children with an Education, Health and Care Plan (EHCP)

If your child has an EHCP and you have moved or are moving into the area, you should contact your current named officer who will provide advice to you about the necessary procedures to be followed. Children due to start in the reception year group living in Bath and North East Somerset need to make an application which should be submitted by the closing date of **15 January 2025**. The applications for children with an EHCP are dealt with through the SEN Code of practice and their placement is determined through the statutory assessment process or an annual review of their plan. All schools are consulted before being named on a pupil's plan and schools have the opportunity to draw attention to any

difficulties arising from oversubscribed year groups. If a school is named on a plan this will take priority over the Admissions Criteria although, wherever possible the place will be offered within the Admission Number for the school. Please note that for children with an EHCP the admissions criteria listed under Section 10 of this booklet does not apply.

[Back to Contents Page](#)

Who has parental responsibility?

*Definitions taken from [Gov.UK](https://www.gov.uk)

A mother automatically has [parental responsibility](#) for her child from birth.

A father usually has parental responsibility if he's either:

- married to the child's mother
- listed on the birth certificate (after a certain date, depending on which part of the UK the child was born in)

You can [apply for parental responsibility](#) if you do not automatically have it.

Births registered in England and Wales

If the parents of a child are married when the child is born, or if they've jointly adopted a child, both have parental responsibility.

They both keep parental responsibility if they later divorce.

Unmarried parents

An unmarried father can get parental responsibility for his child in 1 of 3 ways:

- jointly registering the birth of the child with the mother (from 1 December 2003)
- getting a parental responsibility agreement with the mother
- getting a parental responsibility order from a court

Births registered in Scotland

A father has parental responsibility if he's married to the mother when the child is conceived or marries her at any point afterwards.

An unmarried father has parental responsibility if he's named on the child's birth certificate (from 4 May 2006).

Births registered in Northern Ireland

A father has parental responsibility if he's married to the mother at the time of the child's birth.

If a father marries the mother after the child's birth, he has parental responsibility if he lives in Northern Ireland at the time of the marriage.

An unmarried father has parental responsibility if he's named, or becomes named, on the child's birth certificate (from 15 April 2002).

Births registered outside the UK

If a child is born overseas and comes to live in the UK, parental responsibility depends on the UK country they're now living in.

Same-sex parents

Civil partners

Same-sex partners will both have parental responsibility if they were civil partners at the time of the treatment, e.g., donor insemination or fertility treatment.

Non-civil partners

For same-sex partners who are not civil partners, the 2nd parent can get parental responsibility by either:

- [applying for parental responsibility](#) if a parental agreement was made
- becoming a civil partner of the other parent and making a parental responsibility agreement or jointly registering the birth

All parents (including adoptive parents) have a legal duty to financially support their child, whether they have parental responsibility or not.

Parental responsibility would also apply to a child's guardian (appointed under a will), any person granted a Residence Order for the child, or the Local Authority if a Care Order is in force in respect of the child.

[Back to Contents Page](#)

What else do I need to consider in completing my application?

Find out which schools serve your area

A map at the front of the booklet shows the location of each school and some academy or voluntary aided church schools may serve a particular parish area. Details of these parish areas, where appropriate, are available by contacting the schools directly.

We strongly recommend considering naming your local school as one of your preferences. This will increase your chances of getting a place at a local school, in the event that your highest-ranking preference cannot be met (if, for example, your highest-ranking school is over-subscribed from applicants living closer than you and/or any higher priority applications). If you do not express a preference for your local school, you will not be considered for a place. This could lead to you receiving an offer of a place some distance from your home address and travel arrangements could prove difficult.

Local sibling links – younger brothers and sisters

Many parents/carers express a preference for younger brothers and sisters to attend the same school. Please check the over-subscription criteria for allocating places as some schools give priority to local siblings living up to a certain distance. You should be aware that a local sibling is not the same as a sibling. Children are defined as a sibling under the community admission criteria where:

- Children who live within a 1.5 mile radius* of the school and for whom there will be a sibling in attendance on the admission date at the preferred school.
- Children who live outside a 1.5 mile radius* of the school but it is their **closest** School and for whom there will be a sibling in attendance on the admission date at the preferred school.

And

- they are full or half brother or sister; or
- they are adoptive brother or sister; or
- they are children of the same household

Please note that the offer of a place at any school does not guarantee an offer of a place for a sibling at a later date. Different authorities will vary in the priority that they give to siblings. You will need to consult the relevant admission authority for further advice, i.e., where an admission authority serves an Area of Prime Responsibility (catchment area or parish area), only children who live within the Area of Prime Responsibility will be afforded priority of admission under the local sibling criterion.

You should note that your child will not be considered under the local sibling criterion if you do not meet the criteria above. It is therefore important that you consider stating a preference for your local/nearest school, particularly if you have younger children who you would like to attend the same school in later years.

Consider how you will get your child to school

It is your responsibility as a parent/carer to get your child to school. You must think very carefully about the distance from home to school and about how your child will travel to school.

Most children are not eligible for free transport to school. You may wish to contact your local school and ask for details of their school travel plan. The plan identifies various measures the school has put into place to help reduce the number of car journeys made to and from school. Alternative travel options and schemes include walking buses, road safety workshops, and cycle training. The range of transport options available in Bath & North East Somerset can be found on the council's website at [School Transport](#)

Some schools receive more applications than there are places. While we will do our best, there is no guarantee that we will be able to offer you a place at your preferred school even if you meet the admission criteria.

Use your child's permanent home address

You must apply using your child's permanent home address as of **15 January 2025**. The child's normal permanent home address where he or she lives with his or her parents or legal guardians will be used to decide where the child lives. Bath & North East Somerset Council cannot accept an address of a business, relative, friend, childminder, or a temporary address.

In fairness to all parents, the Council reserves the right to require documentary evidence of the genuineness of a family address and if this is not produced the Council reserves the right to make its own enquiries with, for example, Council Tax Offices.

Temporary addresses cannot be used to obtain school places. If parents or guardians plan to move documentary evidence will be required and in order for any address changes to be taken into account in the first round of allocations made on **16 April 2025** the appropriate documentary evidence must be submitted by midnight on the closing date of **15 January 2025**. However, if details of a change of address that will occur after the closing date (and before the start of term 1) is received with the appropriate documentary evidence by **24 January 2025** i.e., before the LA has sent details of applications to other councils, it will be considered in the first round of applications. **In all cases, it is the parent or carer's responsibility to confirm with the LA that they have received the documentary evidence by the deadline.** Examples of evidence that may be acceptable to determine a child's address are: -

- A solicitor's letter confirming exchange of contracts and completion date for a property which is being purchased or a property which is being sold.
- A copy of a signed rental agreement or a solicitor's letter if moving to a council or rented property **and** proof of your sale or Notice to Quit on your current/previous property.
- A copy of a council tax bill or utility bill such as water, gas, or electricity in your name for your newly owned or rented property **together with** proof of your sale or Notice to Quit on your current/previous property.
- If you are moving in with a relative a letter from them will be required confirming the date you will be moving in together with a copy utility bill showing their name and address. A solicitor's letter will also be required confirming that completion of contracts has taken place on your sale or Notice to Quit on your current/previous property.
- In the case of children of UK Service Personnel with a confirmed posting to the area or Crown Servants returning from overseas, an official letter declaring the relocation date and a Unit postal address or quartering area address should be provided.

- In the case of children from the boating community (Boaters) without a permanent mooring, the parent/carer will be asked to provide details of their sorting office, post office/poste restante address and this will be used for allocation purposes. Proof in the form of a boating licence will also be required and must be submitted at the time of application.

Applications received each year will be checked to confirm addresses using for example the electoral roll, council tax offices and if appropriate the school currently attended before allocations are made. A copy of a recent utility bill may also be requested. In certain additional cases proof of residency will also be determined by using the above methods. Once proof is obtained to the LA's satisfaction that the parent is resident at the address given it will be accepted that the child is also resident at the same address.

Things to consider in advance of a house move

Parents/carers considering a house move in advance of submitting an admission application will very often want to research the local schools that serve their new address. Parents/carers of more than one child may want to reassure themselves that their younger child will have a good chance of obtaining an offer of a school place at the same school as their elder sibling. In these circumstances, parents/carers are advised to consider the following:

- the schools closest to your new home address/which schools serve your new local area
- the admission arrangements for your preferred school(s) for the relevant year of admission
- the consequences of moving home on the outcome of your admission application for younger children, the distance from your new home to your preferred school(s) and how you will get your child to school

Please be aware that sometimes a house move can mean that families with more than one child no longer qualify for admission to their preferred school(s) under the local sibling criterion. This can cause disappointment for families who want their children to attend the same school. While there can be no guarantee about the outcome of admission applications, parents/carers are advised to read the full admission policies for a school and understand the information contained in the admission booklet.

Tell us if your circumstances change

If your circumstances change during the application process or if you know in advance that your circumstances are going to change, for example you are planning to move home before your child starts school, it is important that you tell us.

Be honest – we may ask for documentary evidence

Ensure the information you give us is accurate. In fairness to all parents/carers, Bath & North East Somerset Council reserves the right to require documentary evidence in support of the application and to make its own enquiries. Examples of evidence which may be requested include a birth certificate, a copy of a court order, a solicitor's letter confirming exchange of contracts (and completion date on a new property), a rental agreement, a letter from an employer, a utility bill or evidence of a child's residency. Please be aware that Bath & North East Somerset Council may withdraw an offer of a place where an application is fraudulent or intentionally misleading.

If false information is provided on an application form before an offer of a school place is made, then the application will be void. Parents could submit a further application if they so wished. If this application is received after the closing date it will then be regarded as a late

application. If it is found that a sibling currently at the school was offered a place based on false information, then for any further application received the LA will discount the sibling connection.

What if I change my mind before the closing date?

Any change in preference received before the closing date will supersede all previous applications. Previous applications will be withdrawn.

Please remember if you submit your application online and make changes to or view your application you will need to ensure you re-submit your application.

Applications or changes of preference received after the closing date are **'late applications'** and will not normally be considered for the initial allocation of places.

What happens if my application is late?

If your application is late, it may affect your chance of getting a place at one of the schools you have stated as a preference for your child. On time applicants will be allocated a school place before late applicants. Only in exceptional circumstances will Bath & North East Somerset Council consider that there are extenuating reasons as to why the application could not have been submitted by the closing date and for allowing the application to be treated as if it had arrived on time. This will only apply to late applications received before **29 January 2025**.

Examples of extenuating circumstances might include a close family bereavement or a serious illness for which documentary evidence would be required.

[Back to Contents Page](#)

What happens to my application?

Co-ordinated admissions - Processing your application

All local authorities must have a co-ordinated admission scheme which allows details of applications to be shared with other admission authorities, as appropriate, to ensure that parents/carers receive an offer of a single place on the offer date.

Considering your preferences

Once we receive your completed application by the closing date of **15 January 2025**, we will consider all your preferences and we will try to offer you a place at one of your preferred schools.

In the case of admission to academies and voluntary aided schools in Bath & North East Somerset all applications will be considered with reference to their own over-subscription criteria where necessary. Ranked lists of potential offers will then be returned to Bath & North East Somerset Council including the reason why each applicant qualified for a place, by **28 February 2025**. The list will also include those pupils, for whom a place cannot be offered, in rank order, explaining the reasons for refusal against the over-subscription criteria, and in the order in which additional offers will be made should places become available.

Schools **will not** be notified of the preference order of an application until final offers have been made and schools receive the outcomes on **11 April 2025**.

Applications for all schools will be considered under an 'equal preference' system. This means that all your preferences will initially be considered equally against the admission criteria regardless of the priority order that you put them in. This does not mean that we disregard your preferences; it means that if you are unsuccessful in gaining a place at your first preference school, your second or third preference will not be treated any less favourably just because you placed them as a lower preference.

Receiving your offer

Online applicants will be able to view the outcome of their application for a school place on **16 April 2025** by logging onto the online system using their password. If you applied using the paper application form and opted to receive the outcome via email, this will initially be sent to your email account. If you have not opted to receive the outcome via email you will be notified of the offer of a school place by letter to be posted 2nd class on **16 April 2025**. Bath & North East Somerset Council is unable to inform parents/carers of the offer by telephone.

Bath & North East Somerset Council will make the single offer of a place for reception or Year 3 to parents/carers resident within its area. Places will be allocated against the published oversubscription criteria without reference to the applicant's order of preference. Where a child qualifies for a place at more than one school, the final offer will be the highest ranked school with a place available.

In the case of parents/carers resident in Bath & North East Somerset being refused a place at all their preferred school(s), an alternative school place will be offered to their child at the nearest school to the home address with a place available and they will be informed of the options available at that stage including their right of appeal.

Parents/carers must respond to the offer directly to Bath & North East Somerset Council by **01 May 2025**.

Late applications and changes of preference

Applications submitted after the closing date are 'late applications' and will not normally be considered for the initial allocation of places. However, Bath & North East Somerset will consider the circumstances of a late application before deciding whether to consider it along with the on-time applications.

For over-subscribed schools, if places become available following the initial allocation of places for a school, the same criteria will be applied to 'late applications', formal appeals and for children whose parents/carers have just opted to be on the waiting list. Where a place can be offered at a preferred school for a child as either a late change of preference, from the waiting list or appeal, **any place previously offered at a lower preference school will be withdrawn.**

In the case of under-subscribed schools all late applications submitted since the closing date and up until the **01 May 2025** will be considered together in the second round of allocations. If the school is then oversubscribed all late applications will be considered under the admissions criteria. If the school is still undersubscribed all applicants will be offered places and any further late applicants dealt with on a first come, first served basis.

Details of late applications, on time applicants still seeking a place at their preferred schools and of places not accepted following the initial allocations will be exchanged with academies and voluntary aided schools and other local authorities as far as possible by **09 May 2025** to enable a second round of allocations for all schools to take place by the end of **May 2025**.

The co-ordinated admissions process will continue to be operated, with application data being exchanged with voluntary aided schools, academies, and other local authorities as appropriate, for all applications received up to **31 August 2025**.

[Back to Contents Page](#)

I've been offered a school place, what next?

Once you receive your offer of a school place on **16 April 2025** you must respond to the offer directly to Bath & North East Somerset Council by **01 May 2025**. Note: If you applied online, you will be able to view the outcome of your application online via the parent portal.

All offers are accompanied with details explaining the next stage of the process. Your options are as follows:

- accept the place offered
- ask Bath & North East Somerset Council to consider your child for a place at an alternative preferred school(s).

And where it has not been possible to offer a place at you preferred school(s)

- accept the place offered
- ask Bath & North East Somerset Council to consider your child for a place at an alternative preferred school(s)
- opt to put your child's name on a waiting list but not formally appeal (this applies only if you have been refused a place)
- appeal against the Admission Authority's decision to refuse a place at your original preferred school(s). Your child's name will also be added to the waiting list for the school(s) concerned.

Where a response from you has not been received by **01 May 2025**, we will contact you to advise you of the need to respond within one week and point out that the place may be withdrawn if you do not. Where a place has been withdrawn this will be confirmed in writing.

Withdrawing offers

Once the offer of a place has been made, Bath & North East Somerset Council may withdraw the offer, but only in very limited circumstances, for example:

- where the application was fraudulent or intentionally misleading; or
- where a parent/carer has not responded to the offer within the time requested; or
- where it is possible to offer a higher named preference
- where the offer was made because of an administrative error

Waiting lists

The waiting list comprises those children refused a place whose parents/carers have lodged a formal appeal or have asked to only go on a waiting list.

The waiting lists will be held until the end of the **2025/26** academic year for Community schools. The admission authority for Academy and Voluntary Aided Schools will maintain their own waiting lists from the start of the **2025/26** academic year. They must operate their waiting list until at least the end of Term 2 (December 2025), but each school may decide to hold their waiting list for a longer period.

Priority order on the waiting list will be determined by the oversubscription criteria, not by the date of joining the waiting list.

If you choose to join a waiting list, and a place becomes available at your preferred school for your child, during the normal admissions round, then the place previously offered to you at the lower preference school will be automatically withdrawn.

Children who are the subject of a direction by a local authority to admit or who are allocated to a school in accordance with the Fair Access Protocol must take precedence over those on a waiting list.

Where a place becomes available and Bath & North East Somerset Council or the admission authority, after using all advised contact details is unable to contact a successful applicant for a place within 10 school days, the available place will be offered to the next child to qualify for a place. Where an applicant decides to place their child(ren)'s name on a waiting list, it is for the applicant to keep Bath & North East Somerset Council and the school informed of updated contact and address details.

Can I appeal if my child has been refused a place at my preferred school?

If a place is not offered at the parent's/carer's preferred school, there is the right of appeal to an independent appeal panel. When offers of places are made on **16 April 2025**, if it has not been possible to offer your child one of the schools named as a preference, you will automatically be sent details of how to appeal. Pending your appeal, your child will be offered a school place at a lower named preference if possible or at the nearest school with a place available.

Further information concerning how to appeal will be explained in the decision letter and it will give the reasons for the refusal by the school's admission authority. Details of the appeals arrangements for academy, voluntary aided and foundation schools can be obtained directly from the schools concerned.

Please note that if you wish to appeal for one of these schools, your appeal should be returned to the address on the appeals form. As already mentioned, details concerning how to appeal will be explained in the decision letter, but you will have at least 20 school days from the date of notification that your application was unsuccessful to prepare and lodge your written appeal.

Appeals must be made in writing and include:

- name, address, and date of birth of your child
- name of the preferred school
- reasons for preference
- grounds for the appeal.

The appeals panel will pay attention to circumstances which support your application for the school together with the Admission Authority's reasons for refusal. The appeals panel is not bound by the Admission Authority's published criteria and has the power to exceed the school's Admissions Number. The panel's decision is binding on you, the school, and the schools Admission Authority.

Infant Class Size Appeals

No infant class can now have more than 30 pupils in it. The class size limit does mean that independent Appeals Panels will not, in normal circumstances, be able to allow an appeal if that would cause the relevant class to exceed 30 pupils. This will have some impact on parental preference. Parents may need to take this factor into account when expressing a preference for a school.

Schools will be able to provide you with more information, as to how the reduction of infant class sizes affects them and possibly your child.

At Infant Class Size Appeals the independent appeal panel can only look at:

- Whether the admission arrangements were lawful

- Whether the admission arrangements were incorrectly applied, and your child should have been offered a place.
- Whether it was unreasonable/perverse (in law) to refuse your preference. The appeal panel would need to be satisfied that the decision was so completely absurd / outrageous that no reasonable person, with the same facts, would have made that decision.

Given the extremely limited grounds on which an appeal may be upheld, Infant Class Size Appeals are very rarely successful. Most applicants who have been refused a place at their preferred school consider the refusal to be perverse but as mentioned above the word has a stronger meaning in its legal sense. For example, a decision that makes it impossible for an applicant to transport all their family to school on time, or even impossible for them to continue working, is very unlikely to be perverse. The courts have established this.

Parents/carers can find it frustrating when they realise how very limited the powers of the Appeal Panel are when considering Infant Class Size appeals. The information is being drawn to your attention, so you can make an informed decision about whether you wish to appeal or not. The purpose of this information is to clearly explain the role of the Appeal Panel and not in any way discourage you from appealing, which is of course, your legal right if you feel you have grounds to do so. The Appeal Panel decision is binding on all parties i.e., you, the school, and the LA/Admission Authority of the school.

[Can I have a second appeal for the same school?](#)

If an appeal is unsuccessful there is no automatic right to a further appeal. However, if there are significant and material changes in the circumstances of the parent/carer, child, or school since the time of the original appeal, these will be considered. A significant and material change in circumstances might include:

- where a change of address has occurred since the original appeal which means the home address is significantly closer to the preferred school.
- where a sibling link has been created at the preferred school which was not there at the time of the original appeal
- where new evidence is provided and is supported by a letter from a doctor, psychologist, social worker, or health visitor which could not have been introduced at the time of the original appeal hearing

Any requests for a further appeal should be made in writing to the relevant admissions authority for the school.

[Back to Contents Page](#)

Travel assistance to school – what you need to know

Sustainable modes of Travel to School.

Bath & North East Somerset Council is fully committed to promoting walking, cycling and, for longer distances, greater use of buses for the school journey.

When you are thinking about schools you would like your child to attend, please consider the following:

- Children who walk to school are fitter, have better developed social skills, are more familiar with their surroundings, have better road sense and arrive at school more relaxed and ready to learn.
- Walking, cycling, or using public transport offers children greater independence and flexibility - which is especially important at a time of change in the nature of the school day, with greater numbers of pupils staying for extra study, extracurricular activities, and sport.
- Walking, cycling, or using the bus reduces congestion on the roads.
- Consider the cost of driving your child to school.

Where walking, cycling or public transport are not feasible, car sharing may be an option. This can save time and money and helps cut traffic congestion and air pollution as well as being sociable for children. Car sharing can also reduce the costs for children whose families do not own a car.

Parents who are interested in learning more about their children's School Travel Plan, or in helping to implement the actions within it, should contact their child's school.

Will I be offered free travel assistance to school?

The policies that apply to school admissions and transport to school operate separately. If a pupil is offered a place in a preferred school this does not in any way guarantee that assistance with travel will be available. If transport to school is an issue for you when applying for a school, you are strongly advised to take this into consideration before stating your preference.

There can be a number of reasons why a child may qualify for home to school transport. The home address which determines entitlement to transport is the place where the child is normally resident with his or her parent(s). Please refer to the sections below for further information.

It is your responsibility as a parent/carer to get your child to school. You must think very carefully about the distance from home to school and about how your child will travel to school. Most children are not eligible for free travel assistance to school.

How do I check if my child is eligible for free travel assistance to school?

The LA will provide free transport between home and school if:

- the school attended is the nearest appropriate one, as designated by the LA, and
- the distance between home and that school, when measured by the nearest available walking route is **two miles** or more for children aged five to seven and **three miles** or more for children aged eight years and above. These distances are referred to as "statutory walking distances".

- the LA will also provide transport if the school attended is the closest school to your home address and closer than the designated school and the statutory walking distance given above are met.

Children starting in the reception and junior year group are currently automatically assessed for school transport by the local authority. This may be changing in the future as Bath & North East Somerset is considering moving towards self-assessment for school transport. If and when this takes place, further details would be available on the [School Transport](#) website.

Note: Assistance with travel, if agreed, is provided only at the beginning and end of the normal school day and from the home address.

If you do not apply for your nearest appropriate school as your highest-ranking preference your child may not be given free travel assistance to any school. You must then accept full responsibility for the cost and arrangements of your child's travel to and from school for the duration of their primary phase education.

Additional Transport for Low Income Families

Transport will be provided for children of primary age between the age of 8 and 11 who live more than two miles from the nearest school and are in receipt of or entitled to benefit based free school meals or their maximum level of working tax credit (with no reduction due to income). The distance is measured in the same way as the statutory walking. This is not automatically assessed, and parent/carers must make an application.

Transport on Medical Grounds

In exceptional circumstances home to school transport may be provided on medical grounds, to enable pupils to attend their designated area school even though they may live within the statutory walking distance from the school. The Health Authority or your General Practitioner will need to supply details of the child's medical needs.

Will I be offered travel assistance to a faith school?

From September 2014 the Council agreed a phased withdrawal of subsidised home to school transport services for new starters attending denominational schools from September 2014 who would not qualify under other home to school policy subsets, (e.g., as a low-income family) save in the case of children with siblings currently at the school and who qualify under the denominational transport scheme. This option would not affect students who attended the school before then, only new pupils joining after September 2014.

Some children might still, in a few cases, be entitled to transport where a child attends a specific school for denominational reasons and has a sibling currently at the school and who qualifies under the denominational transport scheme.

Further information regarding the entitlement and charges for denominational transport can be found on the council's website at [School Transport](#) Please note that there will likely be an inflationary increase each year.

Parents/carers considering admission to a faith-based primary school are advised to consider the journey involved and how their child will travel to school.

Fare Paying Passenger Transport

If your child is not entitled to transport under the above policies, they may be able to take up a spare seat on a hired vehicle only (this does not include public bus services), if one is available, on payment of the termly charge determined by the LA. However, it must be

emphasised that before making your application, it is of vital importance that you understand that seats either may not be available at all if the fare paying passenger transport scheme ceases or once offered can be withdrawn at short notice (normally one month) if:

- a child entitled to free transport requires a seat on the vehicle
- it becomes possible to reduce the size of the vehicle provided for passengers entitled to free transport
- the vehicle is no longer required for passengers entitled to free transport and the service is withdrawn altogether

Behaviour on Transport

Children travelling on LA transport are expected to conform to the accepted code of behaviour which applies in the school. Any breach will be dealt with by the school.

Summary

Remember that you may only qualify for free transport if your child is attending the nearest appropriate school.

Application process for assistance with travel to school

The details of school transport policies are available at [School Transport](#) this includes information on how to apply, how applications are considered and how to appeal if an application is refused. Application forms for school transport can be submitted from this site. Applications for school transport shouldn't be submitted until confirmation of a school place has been allocated for your child.

[Back to Contents Page](#)

In-Year admissions

Applications during the school year 2025/26 (In-Year admissions)

If you move into the local area during the school year 2025/26 or are already resident in Bath & North East Somerset and wish to move your child to another school, you will need to complete the In-Year application form. The forms can be used to apply to any school within the Bath & North East Somerset Council area and is available at [In Year Admissions](#). Alternatively, you may contact individual schools or the Admissions & Transport team for an application form.

For In-Year admissions, completed application forms should be returned direct to the admissions authority for the school you have named as your preference. On receipt of an In-Year application, all schools **must** notify Bath & North East Somerset Council of both the application and its outcome.

Academies and Voluntary Aided schools are their own admissions authorities. Own admission authority schools may also require parents/carers to complete a supplementary information form (SIF) to enable the school to collect additional information to apply their over-subscription criteria.

In-Year applications for Bath & North East Somerset schools can be made for any existing year group, even if the school has reached its PAN. You may make separate applications for more than one school. Your application will be considered against the admission criteria if more applications are received than there are places available so the school can determine who qualifies. For In-Year Admission Arrangements for each school please refer to the individual admission policies, also available on the school's web page.

Offers of a school place (In-Year admissions)

Where a parent/carer has been offered a place for their child, they will be expected to take up the offered place within 28 school days otherwise the offer of a place may be withdrawn.

Refusal of a school place (In-Year admissions)

Where a parent/carer has been refused a place for their child, the decision letter will give the reasons for the refusal by the school's admission authority and the next stage of the process available to you.

Your options are as follows:

- opt to put your child's name on a waiting list but not formally appeal (this applies **only** if you have been refused a place)
- appeal against the Admission Authority's decision to refuse a place at your original preferred school(s). Your child's name will also be added to the waiting list for the school(s) concerned.

Details of the appeal arrangements for academy and voluntary aided schools can be obtained directly from the schools concerned.

Fair access for children admitted outside the normal admissions round

Bath & North East Somerset Council has a Fair Access Protocol which provides for children admitted to school outside the normal admissions round. The protocol exists to ensure that access to education is secured quickly for children who do not have a school place and that all schools take their fair share of vulnerable children or those who are hard to place. The protocol will be used to place children during the school year and not at the beginning of the

school year as part of the main admission round. Most children will be admitted to school under normal admission procedures.

The protocol applies to the following groups of children:

- children either subject to a Child in Need Plan or a Child Protection Plan or having had a Child in Need Plan or a Child Protection Plan within 12 months at the point of being referred to the Protocol.
- children living in a refuge or in other Relevant Accommodation at the point of being referred to the Protocol.
- children from the criminal justice system.
- children in alternative provision who need to be reintegrated into mainstream education or who have been permanently excluded but are deemed suitable for mainstream education.
- children with special educational needs (but without an Education, Health and Care plan), disabilities or medical conditions.
- children who are carers.
- children who are homeless.
- children in formal kinship care arrangements.
- children of, or who are, Gypsies, Roma, Travellers, refugees, and asylum seekers.
- children who have been refused a school place on the grounds of their challenging behaviour and referred to the Protocol in accordance with paragraph 3.10 of the Admissions Code.
- children for whom a place has not been sought due to exceptional circumstances.
- children who have been out of education for four or more weeks where it can be demonstrated that there are no places available at any school within a reasonable distance of their home. This does not include circumstances where a suitable place has been offered to a child and this has not been accepted; and
- previously looked after children for whom the local authority has been unable to promptly secure a school place.

Full details of the Fair Access Protocol are available on the council's website under 'Apply to move into an existing school year group' at [Admission to Schools](#)

Please be aware that there is no guarantee that a place will be offered at a school of your preference, and you still have the right of appeal regardless of your child's circumstances (except in very limited circumstances, for example if your child has been twice excluded from school).

Admission of refugee children

- The normal admission process is applied to admission applications received from all parents/carers, including parents/carers of refugee children.
- The council will need to be satisfied those applicants have a right to education in the UK.
- The council will seek appropriate verification in advance of processing applications for admission to school
- Where parents/carers are unhappy with the allocated school, there is a right to an independent appeal

Early/late transfer of children

It is Bath & North East Somerset Council policy that children should move from one year group to another with their chronological age group, including children with special educational needs and those with English as an additional language.

Exceptionally, a child may be educated with a peer group one year younger or one year older than their chronological age group. This needs careful thought. Once placed in a younger age group it is difficult, if not impossible, for a child to return to their chronological age group successfully. Equally, once accelerated it is very difficult for a child to return to their age group without feeling demoralised. If it is agreed that it is in the child's interest to be educated with a younger or older peer group, you will be required to sign a form to confirm that you understand and accept the implications of late/early transfer. If you are seeking early/late admission to a Bath & North East Somerset school you should please read the [delayed and accelerated admissions policy](#) which is available on our web page before submitting the request for consideration to the appropriate admission authority.

A child without an Education, Health and Care Plan may be educated with a peer group one year younger if there is an identified educational need and particular conditions are met. Further details are available from the school concerned and the Special Educational Needs Section.

Additional Information

Parents of **children of existing primary and secondary school age** moving into the LA or wishing to change their child's school for any other reason can apply for places within this LA at any time. Please see the information given under In-Year admissions which explains how to apply and how your application will be processed.

Below is a list of points which schools must not do:

Admission authorities **must not** use supplementary application or information forms that ask:

- a) for any personal details about parents and families, such as maiden names, criminal convictions, marital, or financial status (including marriage certificates)
- b) the first language of parents or the child.
- c) for details about parents' or children's disabilities, special educational needs, or medical conditions.
- d) parents to agree to support the ethos of the school in a practical way.
- e) both parents to sign the form or for the child to complete the form.

[Back to Contents Page](#)

Admissions criteria for primary schools

When schools are oversubscribed the admission authority for the school must apply criteria for determining which children receive priority for admission. For Academy schools, these criteria are determined by the Academy Trust and in the case of Voluntary Aided Schools, these criteria are determined by the governors.

Please note: all admission authorities are required to publish details of their admission arrangements 18 months in advance of the school year before the arrangements are to apply. For admission in **September 2025** this means that parents/carers were able to read and access the **full arrangements** from **15 March 2024** onwards available on [Admission Arrangements 2025-2026](#)

The oversubscription criteria will be applied by the appropriate admission authority to all applications received by the published closing date of **15 January 2025** apart from those received for children with an Education, Health and Care Plan. The criteria will be listed under each school on the following pages **but please refer to the full admission arrangements for each school for further information. These are available on the school's website.**

Supplementary information form (SIF). This is generally a requirement of Voluntary Aided Schools and Academies. Details can be found in their admission policies and the form will be available on the school's website and must be returned direct to the school by the requested date, which is usually the same as the closing date, **15 January 2025** unless otherwise stated. Please remember that you must still complete a common application form as well. If you only complete a SIF, you have **not** made an application for a school place.

The Local Authority is the admission authority for Community schools in Bath and North East Somerset.

Applications for children with an EHCP are dealt with through the SEN Code of practice and their placement is determined through the statutory assessment process or an annual review of their plan. If a school is named in a plan this will take priority over the Oversubscription Criteria although wherever possible the place will be offered within the Admission Number for the school.

The criteria will also be applied to late applications received after the closing date, if any places become available. These applications will be considered **together** with any applicants who have lodged a formal appeal or asked to remain on the waiting list. Late applications are not considered until all applications received on time have been dealt with.

For the purposes of Criterion 2 or B, a paired infant and junior school will be treated as one school.

[The paired schools are:](#)

Moorlands Infant and Junior Schools, Oldfield Park Infant and Junior Schools, Paulton Infant and Junior Schools, St Saviour's Infant and Junior Schools, Twerton Infant and St Michael's Junior Church School, Widcombe Infant and Junior Schools.

Please note this applies to applications for Twerton Infant School only. St Michael's Junior Church School has its own individual admissions criteria, which is published separately.

In year transfer applications should be submitted to the admission authority for the school.

[Back to Contents Page](#)

Community Schools

For Community schools, these criteria are determined by the LA.

In year transfer applications for these schools should be submitted to the Local Authority

Newbridge Primary

Age Range	4 - 11	PAN	60
-----------	--------	-----	----

Paulton Junior

Age Range	7 - 11	PAN	90
-----------	--------	-----	----

St Keyna Primary

Age Range	4 - 11	PAN	60
-----------	--------	-----	----

Twerton Infant

Age Range	4 - 7	PAN	60
-----------	-------	-----	----

Priority A – A 'looked After child' or a child who was previously looked after but immediately after being looked after became subject to an adoption, child arrangement, or special guardianship order including those who appear to the admission authority to have been in state care outside of England and ceased to be in state care as a result of being adopted. (See Notes on Page 17)

Priority B - (The 2 categories in this criterion will be given equal consideration).

- Children who live within a 1.5 mile radius* of the school and for whom there will be a sibling in attendance on the admission date at the preferred school.
- Children who live outside a 1.5 mile radius* of the school but it is their closest school and for whom there will be a sibling in attendance on the admission date at the preferred school.

Priority C - Children who live closest to the school as measured in a direct line.

In year transfer applications should be submitted to the Local Authority

***For Twerton Infant school**, the 1.5 mile radius will be measured from a midpoint between the paired schools. For Twerton Infant and St Michael's Junior Church School the midpoint is 29 Cleeve Green BA2 1SD.

Academy & Voluntary Aided Schools

For Academy schools, these criteria are determined by the Academy Trust and in the case of Voluntary Aided Schools, these criteria are determined by the governors.

In year transfer applications for these schools should be submitted to the school.

***From 01 September 2021**, the admission criteria for Looked After Children and Previously Looked After Children was updated to also include those who appear to the admission authority to have been in state care outside of England and ceased to be in state care as a result of being adopted. Please refer to the page 17 for further information.

Abbot Alphege Academy

Status	Academy	Age Range	4 - 11	PAN	15
--------	---------	-----------	--------	-----	----

Priority 1 – Children Looked After – Children who are in the care of a Local Authority or have previously been but immediately after being looked after became subject to an adoption, a child arrangement order, or special guardianship order. (*see additional notes)

Priority 2 – Children for whom there will be a sibling in attendance on the admission date at the school (in every case the child should be living in the same family unit at the same normal permanent address).

Priority 3 – For Reception only, children of teaching staff who have been in post for at least two years.

Priority 4 – Children living closest to the school as measured in a direct line from the address point of the school.

Bathampton Primary

Status	Academy	Age Range	4 - 11	PAN	30
--------	---------	-----------	--------	-----	----

Priority 1 - Children Looked After – Children who are in the care of a Local Authority or have previously been but immediately after being looked after became subject to an adoption, a child arrangement order, or special guardianship order. (*see additional notes)

Priority 2 – Children who, at the time of application, have a sibling attending Bathampton Primary School

Priority 3 - Children who live closest to the school as measured in a direct line.

Batheaston Church School

Status	Academy	Age Range	4 - 11	PAN	30
--------	---------	-----------	--------	-----	----

Priority 1 - Children Looked After – Children who are in the care of a Local Authority or have previously been but immediately after being looked after became subject to an adoption, a child arrangement order, or special guardianship order. (*see additional notes)

Priority 2 - Children who, at the time of application, have a sibling attending Batheaston Church School.

Priority 3 - Children who live closest to the school as measured in a direct line.

Bathford Church School

Status	Academy	Age Range	4 - 11	PAN	30
--------	---------	-----------	--------	-----	----

Priority A – Children Looked After – Children who are in the care of a Local Authority or have previously been but immediately after being looked after became subject to an adoption, a child arrangement order, or special guardianship order. (*see additional notes)

Priority B - Children who, at the time of application, have a sibling attending Bathford Church School.

Priority C - Children who live closest to the school as measured in a direct line.

Bathwick St. Mary Church School

Status	Academy	Age Range	4 - 11	PAN	30
--------	---------	-----------	--------	-----	----

Priority 1 - Children Looked After – Children who are in the care of a Local Authority or have previously been but immediately after being looked after became subject to an adoption, a child arrangement order, or special guardianship order. (*see additional notes)

Priority 2 - Children who, at the time of application, have a sibling attending Bathwick St Mary Church School.

Priority 3 - Children of School Staff – A member of staff may apply for a reception place at the school for their child. (see full policy for definition). (**SIF** must be completed).

Priority 4 - Children who, at the time of application live within the Bathwick Parishes. (**SIF** must be completed)

Priority 5 - Children living closest to the school, as measured in a direct line.

Bishop Sutton Primary

Status	Academy	Age Range	4 - 11	PAN	30
--------	---------	-----------	--------	-----	----

Priority A - Children Looked After – Children who are in the care of a Local Authority or have previously been but immediately after being looked after became subject to an adoption, a child arrangement order, or special guardianship order. (*see additional notes)

Priority B - **(The 2 categories in this criterion will be given equal consideration).**

- Children who live within a 1.5 mile radius* of the school and for whom there will be a sibling in attendance on the admission date at the preferred school.
- Children who live outside a 1.5 mile radius* of the school but it is their closest school and for whom there will be a sibling in attendance on the admission date at the preferred school.

Priority C - Children who live closest to the school as measured in a direct line.

Cameley Primary

Status	Academy	Age Range	4 - 11	PAN	30
--------	---------	-----------	--------	-----	----

Priority 1 - Children Looked After – Children who are in the care of a Local Authority or have previously been but immediately after being looked after became subject to an adoption, a child arrangement order, or special guardianship order. (*see additional notes)

Priority 2 - Children for whom there will be a sibling in attendance on the admission date at the school (in every case the child should be living in the same family unit at the same normal permanent address)

Priority 3 - Children who are in attendance at the school's nursery school on the date of application.

Priority 4 - Children who live closest to the school as measured in a direct line from the address point.

Castle Primary

Status	Academy	Age Range	4 - 11	PAN	60
--------	---------	-----------	--------	-----	----

Priority 1 - Children Looked After – Children who are in the care of a Local Authority or have previously been but immediately after being looked after became subject to an adoption, a child arrangement order, or special guardianship order. (*see additional notes)

Priority 2 - Children who live within a 1.5 mile radius* of the school and for whom there will be a sibling in attendance on the admission date at the preferred school.

Priority 3 - Children who live outside a 1.5 mile radius* of the school but it is their closest school and for whom there will be a sibling in attendance on the admission date at the preferred school.

Priority 4 - Children who live closest to the school as measured in a direct line from the address point of the school.

Chandag Primary School

Status	Academy	Age Range	4 - 11	PAN	60
--------	---------	-----------	--------	-----	----

Priority A - Children Looked After – Children who are in the care of a Local Authority or have previously been but immediately after being looked after became subject to an adoption, a child arrangement order, or special guardianship order. (*see additional notes)

Priority B – Siblings – Where there are siblings in attendance at Chandag Primary School and who will still be on roll in the year of entry. Sibling refers to brother or sister, half brother or sister, stepbrother or sister or the child of the parent/carer’s partner where the child for whom the place is sought is living in the same family unit at the same address as that sibling.

Priority C – Children of staff where that member of staff has been employed for two or more years at the time at which the application for admission to the Academy is made and/or where the member of staff is recruited to fill a vacant post for which there is a demonstrable skill shortage. (**SIF** must be completed)

Priority D - Children who live closest to the school as measured in a direct line from the home address to the school.

Chew Magna Primary

Status	Academy	Age Range	4 - 11	PAN	15
--------	---------	-----------	--------	-----	----

Priority 1 - Children Looked After – Children who are in the care of a Local Authority or have previously been but immediately after being looked after became subject to an adoption, a child arrangement order, or special guardianship order. (*see additional notes)

Priority 2 - Children for whom there will be a sibling who lives at the same address in attendance on the admission date at the preferred school.

Priority 3 - For Reception only: children of teaching staff who have been in post for at least 2 years.

Priority 4 - Children living closest to the school as measured in a direct line from the address point of the school.

Chew Stoke Church School

Status	Academy	Age Range	4 - 11	PAN	28
--------	---------	-----------	--------	-----	----

Priority 1 - Children Looked After – Children who are in the care of a Local Authority or have previously been but immediately after being looked after became subject to an adoption, a child arrangement order, or special guardianship order. (*see additional notes)

Priority 2 - Children living in the Ecclesiastical parish of Chew Stoke with Nempnett Thrubwell who, at the time of admission, are eligible to receive a Pupil premium (**SIF** must be completed)

Priority 3 - Children living within the Ecclesiastical Parish of Chew Stoke with Nempnett Thrubwell

Priority 4 - Children who have a sibling on the school roll at the time of admission.

Priority 5 - Children who themselves, or whose parent(s) regularly attend a place of Christian worship. Governors expect regular church attendance to be at least once per month for the six month period immediately prior to application (**SIF** must be completed)

Priority 6 - Children not satisfying a higher criterion

A map showing the parish boundaries/catchment is available to view on the school website.

Clutton Primary School

Status	Academy	Age Range	4 - 11	PAN	25
--------	---------	-----------	--------	-----	----

Priority A - Children Looked After – Children who are in the care of a Local Authority or have previously been but immediately after being looked after became subject to an adoption, a child arrangement order, or special guardianship order. (*see additional notes)

Priority B - (The 2 categories in this criterion will be given equal consideration).

- Children who live within a 1.5 mile radius* of the school and for whom there will be a sibling in attendance on the admission date at the preferred school.
- Children who live outside a 1.5 mile radius* of the school but it is their closest school and for whom there will be a sibling in attendance on the admission date at the preferred school.

Priority C - Children who live closest to the school as measured in a direct line.

Combe Down C. of E. Primary

Status	Academy	Age Range	4 - 11	PAN	60
--------	---------	-----------	--------	-----	----

Priority A - Children Looked After – Children who are in the care of a Local Authority or have previously been but immediately after being looked after became subject to an adoption, a child arrangement order, or special guardianship order. (*see additional notes)

Priority B – Children for whom there will be a sibling in attendance on the admission date at the preferred school. (A sibling is defined as sharing at least one parent or legally adopted into the family, and in every case the child should be living in the same family unit at the same address).

Priority C - Children of staff at the school, in either or both of the following circumstances:

- a) Where the member of staff* has been employed by the school for two or more years at the time of application, and/or
- b) The member of staff is recruited to fill a vacant post for which there is a demonstrable skill shortage.

A member of staff is defined as full time and part time, teaching and non-teaching staff employed and paid through the Palladian Academy Trust's payroll. (SIF must be completed)

Priority D - Children not satisfying a higher criterion - Proximity.

East Harptree C. of E. Primary

Status	Academy	Age Range	4 - 11	PAN	15
--------	---------	-----------	--------	-----	----

Priority A - Children Looked After – Children who are in the care of a Local Authority or have previously been but immediately after being looked after became subject to an adoption, a child arrangement order, or special guardianship order. (*see additional notes)

Priority B - **(The 2 categories in this criterion will be given equal consideration).**

- Children who live within a 1.5 mile radius* of the school and for whom there will be a sibling in attendance on the admission date at the preferred school.
- Children who live outside a 1.5 mile radius* of the school but it is their closest school and for whom there will be a sibling in attendance on the admission date at the preferred school.

Priority C - Children who live closest to the school as measured in a direct line.

Farnborough Church Primary

Status	Academy	Age Range	4 - 11	PAN	25
--------	---------	-----------	--------	-----	----

Priority 1 - Children Looked After – Children who are in the care of a Local Authority or have previously been but immediately after being looked after became subject to an adoption, a child arrangement order, or special guardianship order. (*see additional notes)

Priority 2 - Children who live within a 1.5 mile radius of the school and for whom there will be a sibling in attendance on the admission date at the school (in every case the child should be living in the same family unit at the same normal permanent address)

Priority 3 - Children who live within a 1.5 mile radius of the school.

Priority 4 - Children who live outside a 1.5 mile radius of the school, for whom there will be a sibling in attendance on the admission date at the school (in every case the child should be living in the same family unit at the same normal permanent address)

Priority 5 - Children who live closest to the school as measured in a direct line from the address point of the school.

Farrington Gurney Church of England Primary School

Status	Academy	Age Range	4 - 11	PAN	15
--------	---------	-----------	--------	-----	----

Priority A - Children Looked After – Children who are in the care of a Local Authority or have previously been but immediately after being looked after became subject to an adoption, a child arrangement order, or special guardianship order. (*see additional notes)

Priority B - (The 2 categories in this criterion will be given equal consideration).

- Children who live within a 1.5 mile radius* of the school and for whom there will be a sibling in attendance on the admission date at the preferred school.
- Children who live outside a 1.5 mile radius* of the school but it is their closest school and for whom there will be a sibling in attendance on the admission date at the preferred school.

Priority C - Children who live closest to the school as measured in a direct line.

Freshford Church School

Status	Academy	Age Range	4 - 11	PAN	20
--------	---------	-----------	--------	-----	----

Priority 1 - Children Looked After – Children who are in the care of a Local Authority or have previously been but immediately after being looked after became subject to an adoption, a child arrangement order, or special guardianship order. (*see additional notes)

Priority 2 - Children who, at the time of application, have a sibling attending Freshford Church School.

Priority 3 - Children of School Staff - A member of staff may apply for a Reception place at the school for their child. They must have been

- a. employed at the school for at least two consecutive years at the time of application and/or
- b. recruited to fill a vacant post for which there is a demonstrable skill shortage. Members of staff are full time and part time, teaching and non-teaching staff employed at the school and who are paid through the school's payroll system.

Priority 4 - Children for whom Freshford Church School is their closest school as measured in a direct line from the Child's home address (e.g., the distance from a child's home address to Freshford Church School is less than from the child's home address to any other school).

Priority 5 - Children living closest to Freshford Church School, as measured in a direct line.

High Littleton Church of England Primary

Status	Academy	Age Range	4 - 11	PAN	28
--------	---------	-----------	--------	-----	----

Priority A - Children Looked After – Children who are in the care of a Local Authority or have previously been but immediately after being looked after became subject to an adoption, a child arrangement order, or special guardianship order. (*see additional notes)

Priority B - Children who live within The Parish of High Littleton and Hallatrow and for whom there will be a sibling in attendance on the admission date at the preferred school.

Priority C - Children who live within The Parish of High Littleton and Hallatrow.

Priority D - Children who live outside the Parish of High Littleton and Hallatrow and for whom there will be a sibling in attendance on the admission date at the preferred school.

Priority E - Children who live closest to the school as measured in a direct line.

Longvernal Primary School

Status	Academy	Age Range	4 - 11	PAN	30
--------	---------	-----------	--------	-----	----

Priority A - Children Looked After – Children who are in the care of a Local Authority or have previously been but immediately after being looked after became subject to an adoption, a child arrangement order, or special guardianship order. (*see additional notes)

Priority B - **(The 2 categories in this criterion will be given equal consideration).**

- Children who live within a 1.5 mile radius* of the school and for whom there will be a sibling in attendance on the admission date at the preferred school.
- Children who live outside a 1.5 mile radius* of the school but it is their closest school and for whom there will be a sibling in attendance on the admission date.

Priority C – Children who attend Longvernal Forest Nursery, which is part of Longvernal Primary School.

Priority D - Children who live closest to the school as measured in a direct line.

Marksbury C. of E. Primary

Status	Academy	Age Range	4 - 11	PAN	15
--------	---------	-----------	--------	-----	----

Priority 1 - Children Looked After – Children who are in the care of a Local Authority or have previously been but immediately after being looked after became subject to an adoption, a child arrangement order, or special guardianship order. (*see additional notes)

Priority 2 - Children who live within a 1.5 mile radius of the school and for whom there will be a sibling who lives at the same address in attendance on the admission date at the school.

Priority 3 - Children who live outside a 1.5 mile radius of the school but it is their closest school and for whom there will be a sibling who lives at the same address in attendance on the admission date at the school.

Priority 4 - Children who live closest to the school as measured in a direct line from the address point of the school.

Midsomer Norton Primary School

Status	Academy	Age Range	4 - 11	PAN	45
--------	---------	-----------	--------	-----	----

Priority A - Children Looked After – Children who are in the care of a Local Authority or have previously been but immediately after being looked after became subject to an adoption, a child arrangement order, or special guardianship order. (*see additional notes)

Priority B – Children who have a sibling attending Midsomer Norton Primary School at the time of application, who will still be on roll at the time of admission and who lives at the same address.

Priority C – Children who attend Sun Pre-School (the school's nursery).

Priority D - Children who live closest to the school as measured in a direct line.

Moorlands Infant

Status	Academy	Age Range	4 - 7	PAN	60
--------	---------	-----------	-------	-----	----

Priority 1 - Children Looked After – Children who are in the care of a Local Authority or have previously been but immediately after being looked after became subject to an adoption, a child arrangement order, or special guardianship order. (*see additional notes)

Priority 2 - Children for whom there will be a sibling in attendance in either Moorlands Infant or Junior School on the admission date at the school.

Priority 3 - Children who live closest to the school as measured in a direct line from the address point of the infant school.

Moorlands Junior

Status	Academy	Age Range	7 - 11	PAN	60
--------	---------	-----------	--------	-----	----

Priority 1 - Children Looked After – Children who are in the care of a Local Authority or have previously been but immediately after being looked after became subject to an adoption, a child arrangement order, or special guardianship order. (*see additional notes)

Priority 2 - Children transferring from Moorlands Infant school at the end of Year 2.

Priority 3 - Children for whom there will be a sibling in attendance on the admission date at Moorlands Infant or Junior School.

Priority 4 - Children who live closest to the Junior School as measured in a direct line from the address point of the Junior school.

Mulberry Park Educate Together Primary

Status	Academy	Age Range	4 - 11	PAN	30
--------	---------	-----------	--------	-----	----

Priority 1 - Children Looked After – Children who are in the care of a Local Authority or have previously been but immediately after being looked after became subject to an adoption, a child arrangement order, or special guardianship order. (*see additional notes)

Priority 2 – Children with brothers/sisters attending the school at the time of application who will still be on roll on the date of the proposed admission. Brothers/sisters must live at the same address as the child for whom the application is being made. This includes half, step and foster brothers/sisters who live at the same address.

Priority 3 – Those living closest to the school as measured in a direct line from the home address to the school.

Norton Hill Primary

Status	Academy	Age Range	4 - 11	PAN	60
--------	---------	-----------	--------	-----	----

Priority A - Children Looked After – Children who are in the care of a Local Authority or have previously been but immediately after being looked after became subject to an adoption, a child arrangement order, or special guardianship order. (*see additional notes)

Priority B – Children who have a sibling attending Norton Hill Primary school at the time of application, who will still be on roll at the time of admission and who live at the same home address.

Priority C – Children who attend Curiosity Corner Nursery, part of Norton Hill Primary School.

Priority D – Children of permanent staff at the school.

Priority E – Children living closest to the school as measured in a direct line.

Oldfield Park Infant

Status	Academy	Age Range	4 - 7	PAN	60
--------	---------	-----------	-------	-----	----

Priority A - Children Looked After – Children who are in the care of a Local Authority or have previously been but immediately after being looked after became subject to an adoption, a child arrangement order, or special guardianship order. (*see additional notes)

Priority B - **(The 2 categories in this criterion will be given equal consideration).**

- Children who live within a 1.5 mile radius* of the school and for whom there will be a sibling in attendance on the admission date at the preferred school.
- Children who live outside a 1.5 mile radius* of the school but it is their closest school and for whom there will be a sibling in attendance on the admission date at the preferred school.

Priority C - Children for whom are closest to the midpoint* as measured in a direct line.

Oldfield Park Junior

Status	Academy	Age Range	7 - 11	PAN	60
--------	---------	-----------	--------	-----	----

Priority A - Children Looked After – Children who are in the care of a Local Authority or have previously been but immediately after being looked after became subject to an adoption, a child arrangement order, or special guardianship order. (*see additional notes)

Priority B - **(The 2 categories in this criterion will be given equal consideration).**

- Children who live within a 1.5 mile radius* of the school and for whom there will be a sibling in attendance on the admission date at the preferred school.
- Children who live outside a 1.5 mile radius* of the school but it is their closest school and for whom there will be a sibling in attendance on the admission date at the preferred school.

Priority C - Children for whom are closest to the midpoint* as measured in a direct line.

* For Oldfield Park Infant and Oldfield Park Junior Schools the 1.5 mile radius will be measured from a midpoint between the paired schools. The midpoint is 29 Maybrick Road, BA2 3PU.

Paulton Infant

Status	Academy	Age Range	4 - 7	PAN	90
--------	---------	-----------	-------	-----	----

Priority 1 - Children Looked After – Children who are in the care of a Local Authority or have previously been but immediately after being looked after became subject to an adoption, a child arrangement order, or special guardianship order. (*see additional notes)

Priority 2 - Children for whom there will be a sibling in attendance on the admission date at the school.

Priority 3 - Children for whom there will be a sibling in attendance at Paulton Junior School on the admission date at the school.

Priority 4 - Children who live closest to the school as measured in a direct line from the address point of the school.

Peasedown St. John Primary

Status	Academy	Age Range	4 - 11	PAN	60
--------	---------	-----------	--------	-----	----

Priority A - Children Looked After – Children who are in the care of a Local Authority or have previously been but immediately after being looked after became subject to an adoption, a child arrangement order, or special guardianship order. (*see additional notes)

Priority B - **(The 2 categories in this criterion will be given equal consideration).**

- Children who live within a 1.5 mile radius* of the school and for whom there will be a sibling in attendance on the admission date at the preferred school.
- Children who live outside a 1.5 mile radius* of the school but it is their closest school and for whom there will be a sibling in attendance on the admission date at the preferred school.

Priority C - Children who live closest to the school, as measured in a direct line.

Pensford Primary

Status	Academy	Age Range	4 - 11	PAN	15
--------	---------	-----------	--------	-----	----

Priority 1 - Children Looked After – Children who are in the care of a Local Authority or have previously been but immediately after being looked after became subject to an adoption, a child arrangement order, or special guardianship order. (*see additional notes)

Priority 2 - Children who live within a 1.5 mile radius of the school and for whom there will be a sibling who lives at the same address in attendance on the admission date at the preferred school.

Priority 3 - Children who live within a 1.5 mile radius of the school.

Priority 4 - Children who live outside a 1.5 mile radius of the school and for whom there will be a sibling who lives at the same address in attendance on the admission date at the preferred school (with priority being given to children living closest to the school as measured in a direct line from the address point of the school).

Priority 5 - For Reception only, children of teaching staff who have been in post for at least 2 years.

Priority 6 - Children who live closest to the school as measured in a direct line from the address point of the school.

Roundhill Primary

Status	Academy	Age Range	4 - 11	PAN	30
--------	---------	-----------	--------	-----	----

Priority 1 - Children Looked After – Children who are in the care of a Local Authority or have previously been but immediately after being looked after became subject to an adoption, a child arrangement order, or special guardianship order. (*see additional notes)

Priority 2 - Children for whom there will be a sibling in attendance on the admission date at the school (in every case the child should be living in the same family unit at the same normal permanent address.

Priority 3 - For Reception only, children of teaching staff who have been in post for at least 2 years.

Priority 4 - Children who live closest to the school as measured in a direct line from the address point of the school.

St Andrew's Church School

Status	Academy	Age Range	4 - 11	PAN	30
--------	---------	-----------	--------	-----	----

Priority 1 - Children Looked After – Children who are in the care of a Local Authority or have previously been but immediately after being looked after became subject to an adoption, a child arrangement order, or special guardianship order. (*see additional notes)

Priority 2 - Children who, at the time of application, have a sibling attending St Andrew's Church School.

Priority 3 - Children who at the time of application are attending St Andrew's Nursery regularly for at least 2 sessions per week.

Priority 4 - Children living closest to the school, as measured in a direct line.

St. John's Catholic Primary

Status	VA	Age Range	4 - 11	PAN	45
--------	----	-----------	--------	-----	----

Within each of the categories listed below, priority will be given to children who will have a brother or sister at the school at the time of enrolment.

Priority 1 – Catholic looked after and previously looked after children (*see additional notes)

Priority 2 – Catholic children who are resident in the school's designated parishes St John's, Our Lady and St Alphege, Ss Peter and Paul, Bath and St Dunstan's, Keynsham. (See additional notes in full policy)

Priority 3 – Other Catholic children. (See additional notes in full policy)

Priority 4 – Other looked after and previously looked after children. (See additional notes)

Priority 5 – Children who are a Catechumen (See additional notes in full policy)

Priority 6 – Any other children.

A **SIF** needs to be completed for categories 1, 2, 3 or 5.

Where children have identical ranking, priority within each of the categories 1, 2, 3 and 5 will be determined by random allocation. Priority within categories 4 & 6 will be given to those living closest to the school in a direct line. (See additional notes in full policy).

St John's Church of England Primary School (Keynsham)

Status	Academy	Age Range	4 - 11	PAN	30
--------	---------	-----------	--------	-----	----

Priority A - Children Looked After – Children who are in the care of a Local Authority or have previously been but immediately after being looked after became subject to an adoption, a child arrangement order, or special guardianship order. (*see additional notes)

Priority B - **(The 2 categories in this criterion will be given equal consideration).**

- Children who live within a 1.5 mile radius* of the Academy and for whom there will be a sibling in attendance on the admission date at the Academy.
- Children who live outside a 1.5 mile radius* of the Academy but it is their closest school and for whom there will be a sibling in attendance on the admission date at the Academy.

Priority C - Children of staff where the member of staff has been employed for two or more years at the time at which the application for admission to the Academy is made, and/or where the member of staff is recruited to fill a vacant post for which there is a demonstrable skill shortage. (**SIF** must be completed)

Priority D - Children who live closest to the Academy as measured in a direct line.

St. John's C. of E. Primary (MSN)

Status	Academy	Age Range	4 - 11	PAN	60
--------	---------	-----------	--------	-----	----

Priority 1 – Children Looked After – Children who are in the care of a Local Authority or have previously been but immediately after being looked after became subject to an adoption, a child arrangement order, or special guardianship order. (*see additional notes)

Priority 2 – (The 2 categories in this criterion will be given equal consideration).

- Children who have a sibling attending St John's C of E Primary School at the time of application, who will still be on roll at the time of admission and who lives at the same home address.
- Children eligible to receive a Pupil Premium or Service Premium at the time of application. (**SIF** must be completed)

Priority 3 – Children who attend Next Steps Nursery which is part of St John's Primary School.

Priority 4 – Children of permanent Staff who have been employed at St John's C of E Primary School on a permanent contract for at least two years prior to the submission of an admission application, or children of a newly appointed teacher, appointed to satisfy a demonstrable skills shortage

Priority 5 – Children who live closest to the school as measured in a direct line.

St. Julian's Church Primary School

Status	Academy	Age Range	4 - 11	PAN	16
--------	---------	-----------	--------	-----	----

Priority 1 – Children Looked After – Children who are in the care of a Local Authority or have previously been but immediately after being looked after became subject to an adoption, a child arrangement order, or special guardianship order. (*see additional notes)

Priority 2 – Children who at the time of application have an older sibling attending St Julian's Church School and who will still be on roll at the time of admission and who lives at the same home address.

Priority 3 - Children who at the time of application are eligible to receive a Pupil Premium or Service Premium Grant.

Priority 4 – Children of permanent members of staff.

Priority 5 – Children not satisfying a higher criterion.

The **SIF** applies for criterion 1, 2, 3 or 4.

St Martin's Garden Primary

Status	Academy	Age Range	4 - 11	PAN	30
--------	---------	-----------	--------	-----	----

Priority A – Children Looked After – Children who are in the care of a Local Authority or have previously been but immediately after being looked after became subject to an adoption, a child arrangement order, or special guardianship order. (*see additional notes)

Priority B – Children for whom there will be a sibling in attendance on the admission date at the school.

Priority C – Children of staff at the school. A member of staff may apply for a Reception place at the school for their child. They must have been employed at the school for at least two full years at the time of application. Members of staff are full time or part time, either teaching or non-teaching staff employed at the school and who are paid through the school's payroll system. (**SIF** must be completed)

a) where the member of staff has been employed at the school for two or more years at the time at which the application for admission to the school is made, and/or

b) the member of staff is recruited to fill a vacant post for which there is a demonstrable skill shortage.

Priority D – Children not satisfying a higher criteria

St. Mary's Catholic Primary

Status	VA	Age Range	4 - 11	PAN	30
--------	----	-----------	--------	-----	----

Within each of the categories listed below, priority will be given to children who will have a brother or sister at the school at the time of enrolment.

Priority 1 – Catholic looked after and previously looked after children (*see additional notes)

Priority 2 – Catholic children who are resident in the school's designated parishes Our Lady, Help of Christian's (St Mary's), Bath and The Good Shepherd, Batheaston. (see additional notes & parish map available to view at the school or on the school website)

Priority 3 – Other Catholic children. (see additional notes)

Priority 4 – Other looked after and previously looked after children. (*see additional notes)

Priority 5 – Children who are a Catechumen (see additional notes)

Priority 6 – Any other children.

A **SIF** needs to be completed for categories 1, 2, 3 and 5. Where children have identical ranking, priority within each category will be determined by random allocation. (See additional notes in full policy).

St Mary's C. of E Primary (Timsbury)

Status	Academy	Age Range	4 - 11	PAN	30
--------	---------	-----------	--------	-----	----

Priority 1 - Children Looked After – Children who are in the care of a Local Authority or have previously been but immediately after being looked after became subject to an adoption, a child arrangement order, or special guardianship order. (*see additional notes)

Priority 2 - Children who have a sibling attending St Mary's C of E Primary School at the time of application, who will still be on roll at the time of admission and who lives at the same home address.

Priority 3 - Children of permanent staff. (**SIF** must be completed)

Priority 4 – Children who attend the Nursery at St Mary's Primary school at the time of application.

Priority 5 – Children eligible to receive a pupil or service premium at the time of application. (**SIF** must be completed)

Priority 6 - Children not satisfying a higher criterion.

St Mary's Primary (Writhlington)

Status	Academy	Age Range	4 - 11	PAN	30
--------	---------	-----------	--------	-----	----

Priority 1 - Children Looked After – Children who are in the care of a Local Authority or have previously been but immediately after being looked after became subject to an adoption, a child arrangement order, or special guardianship order. (*see additional notes)

Priority 2 - Children who live within a 1.5 mile radius of the school and for whom there will be a sibling who lives at the same address in attendance on the admission date at the preferred school.

Priority 3 – Children who live outside a 1.5 mile radius of the school but it is their closest school and for whom there will be a sibling who lives at the same address in attendance on the admission date at the preferred school.

Priority 4 - Children for whom there will be a sibling in attendance on the admission date at the school (see notes in full policy for sibling definition) and who do not fall within categories 2 and 3.

Priority 5 - Children living closest to the school as measured in a direct line from the address point of the school.

St. Michael's Junior Church School

Status	Academy	Age Range	7 - 11	PAN	60
--------	---------	-----------	--------	-----	----

Priority 1 - Children Looked After – Children who are in the care of a Local Authority or have previously been but immediately after being looked after became subject to an adoption, a child arrangement order, or special guardianship order. (*see additional notes)

Priority 2 – Children who, at the time of application, have a sibling attending St Michael’s Junior Church School.

Priority 3 - Children living closest to the school, as measured in a direct line.

St Nicholas' Church School

Status	Academy	Age Range	4 - 11	PAN	30
--------	---------	-----------	--------	-----	----

Priority A - Children Looked After – Children who are in the care of a Local Authority or have previously been but immediately after being looked after became subject to an adoption, a child arrangement order, or special guardianship order. (*see additional notes)

Priority B - Children who, at the time of application, have a sibling attending St Nicholas Church School.

Priority C - Children who live closest to the school as measured in a direct line.

St. Philip's Primary

Status	Academy	Age Range	4 - 11	PAN	40
--------	---------	-----------	--------	-----	----

Priority A – Children Looked After – Children who are in the care of a Local Authority or have previously been but immediately after being looked after became subject to an adoption, a child arrangement order, or special guardianship order. (*see additional notes)

Priority B - Children for whom there will be a sibling in attendance on the admission date at the preferred school. (See full policy).

Priority C – Children of staff at the school. A member of staff may apply for a Reception place at the school for their child. They must have been employed at the school for at least two full years at the time of application. Members of staff are full time or part time, either teaching or non-teaching staff employed at the school and who are paid through the school’s payroll system. (**SIF** must be completed)

a) where the member of staff has been employed at the school for two or more years at the time at which the application for admission to the school is made, and/or

b) the member of staff is recruited to fill a vacant post for which there is a demonstrable skill shortage.

Priority D - Children not satisfying a higher criterion (Proximity)

St. Saviour's Infant Church School

Status	Academy	Age Range	4 - 7	PAN	60
--------	---------	-----------	-------	-----	----

Priority 1 - Children Looked After – Children who are in the care of a Local Authority or have previously been but immediately after being looked after became subject to an adoption, a child arrangement order, or special guardianship order. (*see additional notes)

Priority 2 - Children who, at the time of application, have a sibling attending St Saviour's Infant Church School or St Saviour's Junior Church School.

Priority 3 - Children who, at the time of application, are attending St Saviour's Nursery regularly for at least 2 sessions per week.

Priority 4 - Children of School Staff - A member of staff at either St Saviour's Infant Church School or St Saviour's Junior Church School may apply for a Reception place at the school for their child. They must have been

- a) employed at the school for at least two consecutive years at the time of application and/or
- b) recruited to fill a vacant post for which there is a demonstrable skill shortage. Members of staff are full time and part time, teaching and non-teaching staff employed at the school and who are paid through the school's payroll system.

Priority 5 - Children living closest to the school, as measured in a direct line.

St. Saviour's Junior Church School

Status	Academy	Age Range	7 - 11	PAN	60
--------	---------	-----------	--------	-----	----

Priority 1 – Children Looked After – Children who are in the care of a Local Authority or have previously been but immediately after being looked after became subject to an adoption, a child arrangement order, or special guardianship order. (*see additional notes)

Priority 2 - Children who, at the time of application, have a sibling attending St Saviour's Infant Church School or St Saviour's Junior Church School.

Priority 3 - Children who, at the time of application attend St Saviour's Infant Church School, who do not have a sibling at St Saviour's Infant Church School or St Saviour's Junior Church School.

Priority 4 - Children of School Staff - A member of staff may apply for a Year 3 place at the school for their child. They must have been

- a) employed at the school for at least two consecutive years at the time of application and/or
- b) recruited to fill a vacant post for which there is a demonstrable skill shortage. Members of staff are full time and part time, teaching and non-teaching staff employed at the school and who are paid through the school's payroll system.

Priority 5 - Children living closest to the school, as measured in a direct line.

St Stephen's Church School

Status	Academy	Age Range	4 - 11	PAN	60
--------	---------	-----------	--------	-----	----

Priority 1 - Children Looked After – Children who are in the care of a Local Authority or have previously been but immediately after being looked after became subject to an adoption, a child arrangement order, or special guardianship order. (*see additional notes)

Priority 2 - Children who, at the time of application, have a sibling attending St Stephen's Church School.

Priority 3 - Children living closest to the school, as measured in a direct line.

Salford Primary School

Status	Academy	Age Range	4 - 11	PAN	60
--------	---------	-----------	--------	-----	----

Priority A - Children Looked After – Children who are in the care of a Local Authority or have previously been but immediately after being looked after became subject to an adoption, a child arrangement order, or special guardianship order. (*see additional notes)

Priority B - The 2 categories in this criterion will be given equal consideration:

- Children who live within a 1.5 mile radius* of the school and for whom there will be a sibling in attendance on the admission date at the preferred school.
- Children who live outside a 1.5 mile radius* of the school but it is their closest school and for whom there will be a sibling in attendance on the admission date at the preferred school.

Priority C - Children of staff of Salford Primary School, where that member of staff has been employed for two or more years at the time at which the application for admission to the Academy is made, and/or where the member of staff is recruited to fill a vacant post for which there is a demonstrable skill shortage. (**SIF** must be completed)

Priority D - Children who live closest to the school as measured in a direct line.

Shoscombe Church School

Status	Academy	Age Range	4 - 11	PAN	15
--------	---------	-----------	--------	-----	----

Priority 1 - Children Looked After – Children who are in the care of a Local Authority or have previously been but immediately after being looked after became subject to an adoption, a child arrangement order, or special guardianship order. (*see additional notes)

Priority 2 - Children who at the time of application have an older sibling at Shoscombe Church School who will still be on roll at the time of admission and who live at the same address.

Priority 3 - Children who at the time of application are eligible to receive a Pupil Premium or a Service Premium grant.

Priority 4 - Children of permanent members of staff

Priority 5 - Children not satisfying a higher criterion.

A **SIF** is required for criterion 1, 2, 3 or 4.

Somerdale Educate Together Primary

Status	Academy	Age Range	4 - 11	PAN	30
--------	---------	-----------	--------	-----	----

Priority 1 - Children Looked After – Children who are in the care of a Local Authority or have previously been but immediately after being looked after became subject to an adoption, a child arrangement order, or special guardianship order. (*see additional notes)

Priority 2 - Children with brothers/sisters attending the school at the time of application who will still be on roll on the date of the proposed admission. Brothers/sisters must live at the same address as the child for whom the application is being made. This includes half, step and foster brothers/sisters who live at the same address.

Priority 3 - Those living closest to the school as measured in a direct line from the home address to the school.

Stanton Drew Primary

Status	Academy	Age Range	4 - 11	PAN	10
--------	---------	-----------	--------	-----	----

Priority A - Children Looked After – Children who are in the care of a Local Authority or have previously been but immediately after being looked after became subject to an adoption, a child arrangement order, or special guardianship order. (*see additional notes)

Priority B - **(The 2 categories in this criterion will be given equal consideration).**

- Children who live within a 1.5 mile radius* of the school and for whom there will be a sibling in attendance on the admission date at the preferred school.
- Children who live outside a 1.5 mile radius* of the school but it is their closest school and for whom there will be a sibling in attendance on the admission date at the preferred school.

Priority C - Children who live closest to the school as measured in a direct line.

Swainswick Church School

Status	Academy	Age Range	4 - 11	PAN	12
--------	---------	-----------	--------	-----	----

Priority 1 – Children Looked After – Children who are in the care of a Local Authority or have previously been but immediately after being looked after became subject to an adoption, a child arrangement order, or special guardianship order. (*see additional notes)

Priority 2 – Children who, at the time of application, have a sibling attending Swainswick Church School.

Priority 3 – Children of School Staff - A member of staff may apply for a Reception place at the school for their child. They must have been

- a) employed at the school for at least two consecutive years at the time of application and/or
- b) recruited to fill a vacant post for which there is a demonstrable skill shortage. Members of staff are full time and part time, teaching and non-teaching staff employed at the school and who are paid through the school's payroll system.

Priority 4 – Children living closest to the school, as measured in a direct line.

Trinity Church School

Status	Academy	Age Range	4 - 11	PAN	30
--------	---------	-----------	--------	-----	----

Priority 1 - Children Looked After – Children who are in the care of a Local Authority or have previously been but immediately after being looked after became subject to an adoption, a child arrangement order, or special guardianship order. (*see additional notes)

Priority 2 - Children who have a sibling attending Trinity Church School at the time of application, who will still be on roll at the time of admission and who lives at the same home address.

Priority 3 - Children of permanent staff.

Priority 4 - Children who attend Acorns Nursery at Trinity Church School at the time of application.

Priority 5 - Children eligible to receive a pupil or service premium at the time of application. (**SIF** must be completed)

Priority 6 - Children not satisfying a higher criterion

Two Rivers C. of E. Primary

Status	Academy	Age Range	4 - 11	PAN	60
--------	---------	-----------	--------	-----	----

Priority 1 - Children Looked After – Children who are in the care of a Local Authority or have previously been but immediately after being looked after became subject to an adoption, a child arrangement order, or special guardianship order. (*see additional notes)

Priority 2 – Children for whom there will be a sibling in attendance on the admission date at the preferred school. Brothers/sisters must be living at the same address (Home address) as the child for whom the application is being made.

Priority 3 - Children of staff at Two Rivers C of E Primary School where the member of staff is recruited to fill a vacant post for which there is a demonstrable skill shortage. (**SIF** must be completed)

Priority 4 – Other children.

Ubley C. of E. Primary

Status	Academy	Age Range	4 - 11	PAN	15
--------	---------	-----------	--------	-----	----

Priority A - Children Looked After – Children who are in the care of a Local Authority or have previously been but immediately after being looked after became subject to an adoption, a child arrangement order, or special guardianship order. (*see additional notes)

Priority B - **(The 2 categories in this criterion will be given equal consideration).**

- Children who live within a 1.5 mile radius* of the school and for whom there will be a sibling in attendance on the admission date at the preferred school.
- Children who live outside a 1.5 mile radius* of the school but it is their closest school and for whom there will be a sibling in attendance on the admission date at the preferred school.

Priority C - Children who live closest to the school as measured in a direct line.

Welton Primary School

Status	Academy	Age Range	4 - 11	PAN	28
--------	---------	-----------	--------	-----	----

Priority A - Children Looked After – Children who are in the care of a Local Authority or have previously been but immediately after being looked after became subject to an adoption, a child arrangement order, or special guardianship order. (*see additional notes)

Priority B - **The 2 categories in this criterion will be given equal consideration**

- Children who live within a 1.5 mile radius* of the school and for whom there will be a sibling in attendance on the admission date at the preferred school.
- Children who live outside a 1.5 mile radius* of the school but it is their closest school and for whom there will be a sibling in attendance on the admission date at the preferred school.

Priority C - Children who attend the Nursery provision on the Welton Primary School site.

Priority D - Children who live closest to the school as measured in a direct line.

Westfield Primary School

Status	Academy	Age Range	4 - 11	PAN	60
--------	---------	-----------	--------	-----	----

Priority A - Children Looked After – Children who are in the care of a Local Authority or have previously been but immediately after being looked after became subject to an adoption, a child arrangement order, or special guardianship order. (*see additional notes)

Priority B - The 2 categories in this criterion will be given equal consideration

- Children who live within a 1.5 mile radius* of the school and for whom there will be a sibling in attendance on the admission date at the preferred school.
- Children who live outside a 1.5 mile radius* of the school but it is their closest school and for whom there will be a sibling in attendance on the admission date at the preferred school.

Priority C - Children who live closest to the school as measured in a direct line.

Weston All Saints CE Primary

Status	Academy	Age Range	4 - 11	PAN	90
--------	---------	-----------	--------	-----	----

Priority 1 - Children Looked After – Children who are in the care of a Local Authority or have previously been but immediately after being looked after became subject to an adoption, a child arrangement order, or special guardianship order. (*see additional notes)

Priority 2 - Children for whom there will be a sibling in attendance on the admission date at the school (in every case the child should be living in the same family unit at the same normal permanent address)

Priority 3 - For Reception only, children of teaching staff who have been in post for at least 2 years.

Priority 4 - Children living closest to the school as measured in a direct line from the address point of the school.

Whitchurch Primary

Status	Academy	Age Range	4 - 11	PAN	45
--------	---------	-----------	--------	-----	----

Priority A - Children Looked After – Children who are in the care of a Local Authority or have previously been but immediately after being looked after became subject to an adoption, a child arrangement order, or special guardianship order. (*see additional notes)

Priority B - (The 2 categories in this criterion will be given equal consideration).

- Children who live within a 1.5 mile radius* of the school and for whom there will be a sibling in attendance on the admission date at the preferred school.
- Children who live outside a 1.5 mile radius* of the school but it is their closest school and for whom there will be a sibling in attendance on the admission date at the preferred school.

Priority C - Children who live closest to the school as measured in a direct line.

Widcombe Infant

Status	Academy	Age Range	4 - 7	PAN	60
--------	---------	-----------	-------	-----	----

Priority 1 - Children Looked After – Children who are in the care of a Local Authority or have previously been but immediately after being looked after became subject to an adoption, a child arrangement order, or special guardianship order. (*see additional notes)

Priority 2 - Children with a sibling attending Widcombe Infant School or Widcombe Junior School at the time the admission application is submitted.

Priority 3 - Children of staff (full time and part time, teaching and non-teaching staff employed and paid through the Palladian Academy Trust's payroll) who have been employed at Widcombe Infant School on a permanent contract for at least two years prior to the submission of an admission application, or children of a newly recruited member of staff appointed to satisfy a demonstrable skill shortage. (**SIF** must be completed)

Priority 4 - Children not satisfying a higher criterion and living closest to Widcombe Infant School by straight line from the address point of the child's home address to the address point of the school as defined by the Local Land & Property Gazetteer (LLPG).

Widcombe C. of E. Junior

Status	Academy	Age Range	7 - 11	PAN	60
--------	---------	-----------	--------	-----	----

Priority 1 - Children Looked After – Children who are in the care of a Local Authority or have previously been but immediately after being looked after became subject to an adoption, a child arrangement order, or special guardianship order. (*see additional notes). (**SIF** must be completed)

Priority 2 - Children attending Widcombe Infant School at the time of application who have a sibling attending Widcombe Infant School or Widcombe C of E Junior School who will still be on roll at the time of admission.

Priority 3 - Children attending Widcombe Infant School at the time of application who do not have a sibling at either Widcombe Infant School or Widcombe C of E Junior School

Priority 4 - Children who are not attending Widcombe Infant School but have a sibling at either Widcombe Infant School or Widcombe C of E Junior School who will still be attending either school at the time of admission.

Priority 5 - Children who, at the time of application, live within the Ecclesiastical Parish of Bath, Widcombe or with a confirmed move to an address within this Parish and are eligible to receive a Pupil Premium. (**SIF** must be completed)

Priority 6 - Children who at the time of application, live within the Ecclesiastical Parish of Bath, Widcombe or with a confirmed move to an address within this Parish.

Priority 7 - Children who at the time of application are eligible to receive a Pupil Premium, or Service Premium. (**SIF** must be completed)

Priority 8 - Children not satisfying a higher criterion.

A map of the Ecclesiastical Parish of Bath, Widcombe is available on the school website. A copy is also available to view by appointment at the school. [Back to Contents Page](#)

Infant, junior and primary schools in Bath & North East Somerset

Abbot Alphege Academy		
Beckford Drive, Lansdown, Bath, BA1 9AU	Status	Academy
	Age Range	4 - 11
	Admission Number	15
Telephone: 01225 580281	Head Teacher – Mrs Vicky Dupras	
Email: office@abbot-alphege.org.uk		
Website: www.abbot-alphege.org.uk/		

Bathampton Primary		
Tyning Road, Bathampton, Bath, BA2 6TQ	Status	Academy
	Age Range	4 - 11
	Admission Number	30
Telephone: 01225 465229	Executive Head Teacher – Mr Joe Beament Head Teacher – Mrs Naomi Boyce	
Email: enquiries@bathampton.bwmat.org		
Website: www.bathamptonprimary.org		

Batheaston Church School		
School Lane, Northend, Bath, BA1 7UB	Status	Academy
	Age Range	4 - 11
	Admission Number	30
Telephone: 01225 858555	Head Teacher – Mrs Sally Jefferies	
Email: office@batheaston.bwmat.org		
Website: www.batheastonprimary.co.uk		

Bathford Church School		
Dovers Park, Bathford, Bath, BA1 7UB	Status	Academy
	Age Range	4 - 11
	Admission Number	30
Telephone: 01225 858776	Head Teacher – Mrs Becky Hayter	
Email: office@bathford.bwmat.org		
Website: www.bathfordchurchschool.co.uk		

Bathwick St. Mary Church School		
Darlington Road, Bath, BA2 6NN	Status	Academy
	Age Range	4 - 11
	Admission Number	30
Telephone: 01225 465654	Head Teacher – Mr Kevin Purkiss	
Email: office@bsm.bwmat.org		
Website: www.bathwickstmary.org		

Bishop Sutton Primary		
Wick Road, Bishop Sutton, Bristol, BS39 5XD	Status	Academy
	Age Range	4 - 11
	Admission Number	30
Telephone: 01275 332817	Head Teacher – Mr Tim Eustace	
Email: BSPS@bishopsuttonstantondrew.co.uk		
Website: www.bishopsuttonstantondrew.co.uk		

[Back to Contents Page](#)

Cameley Primary		
Meadway, Temple Cloud, Bristol, BS39 5BD	Status	Academy
	Age Range	3 - 11
	Admission Number	30
Telephone: 01761 452644	Head Teacher – Miss Hannah Maggs	
Email: office@cameleyprimary.org.uk		
Website: www.cameleyprimaryschool.org		

Castle Primary		
Newlands Road, Keynsham, Bristol, BS31 2TS	Status	Academy
	Age Range	2 - 11
	Admission Number	60
Telephone: 0117 9864489	Head Teacher – Mr Chris Canning	
Email: Office@castleprimary.uk		
Website: www.castle.bathnes.sch.uk		

Chandag Primary		
Chandag Road, Keynsham, Bristol, BS31 1PQ	Status	Academy
	Age Range	2 - 11
	Admission Number	60
Telephone: 0117 9864129	Head Teacher – Miss Davina Lucas	
Email: enquiries@chandagschool.org.uk		
Website: www.chandagschool.org.uk		

Chew Magna Primary		
Buthams Lane, Chew Magna, Bristol, BS40 8RQ	Status	Academy
	Age Range	4 - 11
	Admission Number	15
Telephone: 01275 332409	Head Teacher – Ms Annie Spencer	
Email: office@chewmagnaschool.org.uk		
Website: www.chewmagna.bathnes.sch.uk		

Chew Stoke Church School		
School Lane, Chew Stoke, Bristol, BS40 8UY	Status	Academy
	Age Range	4 - 11
	Admission Number	28
Telephone: 01275 332354	Head Teacher – Mr Ben Hewett	
Email: office@chewstokeacademy.org		
Website: www.chewstokeacademy.org		

Clutton Primary		
Station Road, Clutton, Bristol, BS39 5RA	Status	Academy
	Age Range	4 - 11
	Admission Number	25
Telephone: 01761 452510	Executive Head Teacher - Mr Dan Turull Head of School – Mrs Lucy Cowgill	
Email: office@cluttonschool.com		
Website: www.cluttonschool.com		

Combe Down C. of E. Primary		
Summer Lane, Combe Down, Bath, BA2 5JX	Status	Academy
	Age Range	4 - 11
	Admission Number	60
Telephone: 01225 840324	Co-Head Teacher – Mrs Jane Gascoigne Co-Head Teacher – Mrs Jo Bird	
Email: cdpoffice@palladianacademytrust.com		
Website: www.combedown.com		

[Back to Contents Page](#)

East Harptree C. of E. Primary		
Church Lane, East Harptree, Bristol, BS40 6BD	Status	Academy
	Age Range	4 - 11
	Admission Number	15
Telephone: 01761 221492	Head Teacher – Mr Ian Harvey	
Email: office@eastharptreeprimary.org.uk		
Website: www.eastharptreeandubley.org.uk		

Farmborough Church Primary		
The Street, Farmborough, Bath, BA2 0FY	Status	Academy
	Age Range	4 - 11
	Admission Number	25
Telephone: 01761 470714	Head Teacher – Mr Darren Roberts	
Email: office@farmboroughchurchprimary.org.uk		
Website: www.farmboroughchurchprimary.org.uk		

Farrington Gurney C. of E. Primary		
Church Lane, Farrington Gurney, Bristol, BS39 6TY	Status	Academy
	Age Range	4 - 11
	Admission Number	15
Telephone: 01761 452419	Executive Head Teacher - Mr Dan Turull Head of School – Mrs Catrin Geeson	
Email: office@farringtongurneyschool.co.uk		
Website: www.farringtongurneyschool.co.uk		

Freshford Church School		
High Street, Freshford, Bath, BA2 7WE	Status	Academy
	Age Range	4 - 11
	Admission Number	20
Telephone: 01225 723331	Head Teacher – Mrs Ruth Poole	
Email: office@freshford.bwmat.org		
Website: www.freshfordschool.org.uk		

High Littleton C. of E. Primary		
Church Hill, High Littleton, Bristol, BS39 5HF	Status	Academy
	Age Range	4 - 11
	Admission Number	25
Telephone: 01761 470622	Head Teacher – Mr Gareth Griffith	
Email: office@highlittletonschool.com		
Website: www.highlittletonschool.com		

Longvernal Primary		
Clapton Road, Midsomer Norton, Bath, BA3 2LP	Status	Academy
	Age Range	2 - 11
	Admission Number	30
Telephone: 01761 412777	Head Teacher – Mrs Karen Bazeley	
Email: office@longvernalschool.com		
Website: www.longvernal.com		

Marksbury C. of E. Primary		
Marksbury, Bath, BA2 9HS	Status	Academy
	Age Range	4 - 11
	Admission Number	15
Telephone: 01761 470628	Head Teacher – Mrs Julie Player	
Email: enquiries@marksburyschool.org.uk		
Website: www.marksburyschool.org.uk		

[Back to Contents Page](#)

Midsomer Norton Primary		
High Street, Midsomer Norton, Bath, BA3 2DR	Status	Academy
	Age Range	2 - 11
	Admission Number	45
Telephone: 01761 412289	Executive Head – Mr Alun Randell Head Teacher – Ms Sarah Bliss	
Email: office@midsomernortonprimary.co.uk		
Website: www.midsomernortonprimary.co.uk/		

Moorlands Infant		
Moorfields Road, Bath, BA2 2DQ (all post and contacts via Junior School)	Status	Academy
	Age Range	4 - 7
	Admission Number	60
Telephone: 01225 421912	Head Teacher – Miss Louisa Sellars	
Email: office@moorlands-school.com		
Website: www.moorlands-school.org		

Moorlands Junior		
Chantry Mead Road, Bath, BA2 2DE	Status	Academy
	Age Range	7 - 11
	Admission Number	60
Telephone: 01225 421912	Head Teacher – Miss Louisa Sellars	
Email: office@moorlands-school.com		
Website: www.moorlands-school.org		

Mulberry Park Educate Together Primary		
Mulberry Way, Combe Down, Bath, BA2 5BU	Status	Academy
	Age Range	4 - 11
	Admission Number	30
Telephone: 01225 696444	Head Teacher – Mrs Sarah Phillips	
Email: info@muberryparket.org.uk		
Website: www.mulberryparket.org.uk		

Newbridge Primary		
Charmouth Road, Bath, BA1 3LL	Status	Community
	Age Range	4 - 11
	Admission Number	60
Telephone: 01225 421675	Head Teacher – Ms Gill Kennaugh	
Email: enquiries@newbridge.bathnes.sch.uk		
Website: www.newbridge.bathnes.sch.uk		

Norton Hill Primary		
Silver Street, Midsomer Norton, Radstock, BA3 2UE	Status	Academy
	Age Range	2 - 11
	Admission Number	60
Telephone: 01761 205630	Executive Head Teacher – Mrs Kerrie Courtier Head Teacher – Mrs Siobhan Waterhouse	
Email: office@nortonhillprimary.com		
Website: https://www.nortonhillprimary.com/		

Oldfield Park Infant		
Dorset Close, Bath, BA2 3RF	Status	Academy
	Age Range	4 - 7
	Admission Number	60
Telephone: 01225 422903	Executive Head Teacher – Mr David Goucher	
Email: opioffice@palladianacademytrust.com		
Website: www.oldfieldparkinfants.co.uk/		

[Back to Contents Page](#)

Oldfield Park Junior		
Lymore Terrace, Twerton, Bath, BA2 2JL	Status	Academy
	Age Range	7 - 11
	Admission Number	60
Telephone: 01225 423477	Executive Head Teacher – Mr David Goucher	
Email: opjoffice@palladianacademytrust.com		
Website: www.oldfieldparkjuniorschool.com		

Paulton Infant		
Plumtre Close, Paulton, Bristol, BS39 7QY	Status	Academy
	Age Range	4 - 7
	Admission Number	90
Telephone: 01761 412354	Head Teacher – Ms Emily Omell	
Email: office@paulton-inf.bathnes.sch.uk		
Website: www.paultoninfantschool.co.uk		

Paulton Junior		
Plumtre Close, Paulton, Bristol, BS39 7QY	Status	Community
	Age Range	7 - 11
	Admission Number	90
Telephone: 01761 418137	Acting Head Teacher – Mrs Sally Rawlings	
Email: paulton_jun@bathnes.gov.uk		
Website: www.paultonjuniorschool.co.uk		

Peasedown St. John Primary		
Bath Road, Peasedown, Bath, BA2 8DH	Status	Academy
	Age Range	2 - 11
	Admission Number	60
Telephone: 01761 432311	Head Teacher – Ms Ruth Noall	
Email: office@psjprimary.co.uk		
Website: www.psjprimary.co.uk/		

Pensford Primary		
Pensford Hill, Pensford, Bristol, BS39 4AA	Status	Academy
	Age Range	4 - 11
	Admission Number	15
Telephone: 01761 490470	Head Teacher – Mr Warrick Barton	
Email: Pensford_office@pensfordschool.org		
Website: www.pensfordschool.org		

Roundhill Primary		
Mount Road, Southdown, Bath, BA2 1LG	Status	Academy
	Age Range	2 - 11
	Admission Number	30
Telephone: 01225 424950	Head Teacher – Mrs Kirby Littlewood	
Email: office@roundhill-pri.co.uk		
Website: www.roundhill-pri.co.uk		

St. Andrew's Church School		
Northampton Street, Julian Road, Bath, BA1 2SN	Status	Academy
	Age Range	3 - 11
	Admission Number	30
Telephone: 01225 310135	Head Teacher – Mr Grant Swarbrooke	
Email: enquiries@standrewsbath.bwmat.org		
Website: www.standrewsprimarybath.com		

[Back to Contents Page](#)

St. John's C. of E. Primary		
Charlton Park, Keynsham, Bristol, BS31 2NB	Status	Academy
	Age Range	4 - 11
	Admission Number	30
Telephone: 0117 9863824	Head Teacher – Mrs Julia Bamfield	
Email: enquiries@stjohnskeynsham.co.uk		
Website: www.stjohnskeynsham.co.uk		

St. John's C. of E. Primary		
Redfield Road, Midsomer Norton, Bath, BA3 2JN	Status	Academy
	Age Range	2 - 11
	Admission Number	60
Telephone: 01761 412019	Head Teacher – Mrs Danielle West-Gaul	
Email: office@stjohnsmsn.co.uk		
Website: www.stjohnsmsn.co.uk		

St. John's Catholic Primary		
Oldfield Lane, Bath, BA2 3NR	Status	Voluntary Aided
	Age Range	4 - 11
	Admission Number	45
Telephone: 01225 303990	Co-Head Teacher – Mrs Angela Bennett Co-Head Teacher – Mr Tom Simmons	
Email: office@stjohns.bathnes.sch.uk		
Website: www.stjohnscatholicprimary.org.uk		

St. Julian's Church School		
Wellow, Bath, BA2 8QS	Status	Academy
	Age Range	4 - 11
	Admission Number	16
Telephone: 01225 833143	Executive Head Teacher – Mrs Kerrie Courtier Head Teacher – Miss Isobel Mills	
Email: office@stjuliansprimary.co.uk		
Website: www.stjuliansprimary.co.uk		

St. Keyna Primary		
Monmouth Road, Keynsham, Bristol, BS31 2JP	Status	Community
	Age Range	3 – 11
	Admission Number	60
Telephone: 0117 9863852	Head Teacher – Mr Steve Gumm	
Email: stkeyna_pri@bathnes.gov.uk		
Website: www.stkeynaprimary.co.uk		

St. Martins Garden Primary		
Lympham Green, Odd Down, Bath, BA2 2UN	Status	Academy
	Age Range	3 - 11
	Admission Number	30
Telephone: 01225 832112	Head Teacher – Mrs Becky Wilson	
Email: SMGSchool@PalladianAcademyTrust.com		
Website: www.stmartinsgarden.org.uk		

St. Mary's C. of E. Primary (Timsbury)		
Lansdown View, Timsbury, Bath, BA2 0JR	Status	Academy
	Age Range	2 - 11
	Admission Number	30
Telephone: 01761 470245	Head Teacher – Mrs Michelle Parsons	
Email: office@stmarystimsbury.co.uk		
Website: www.stmarystimsbury.co.uk/		

[Back to Contents Page](#)

St. Mary's C. of E. Primary (Writhlington)		
Old Road, Writhlington, Radstock, Bath, BA3 3NG	Status	Academy
	Age Range	3 - 11
	Admission Number	30
Telephone: 01761 434548	Head Teacher – Ms Cathie Lampert	
Email: office@stmaryswrithlington.co.uk		
Website: www.stmaryswrithlington.co.uk		

St. Mary's Catholic Primary		
Penn Hill Road, Weston, Bath, BA1 4EH	Status	Voluntary Aided
	Age Range	4 - 11
	Admission Number	30
Telephone: 01225 429030	Head Teacher – Mrs Nicole Pecchia	
Email: admin@st-marys.bathnes.sch.uk		
Website: www.st-marys.bathnes.sch.uk		

St. Michael's Junior Church School		
Newton Road, Twerton, Bath, BA2 1RW	Status	Academy
	Age Range	7 - 11
	Admission Number	60
Telephone: 01225 421888	Head Teacher – Miss Rebecca Mellor Executive Head Teacher – Ms Clare Greene	
Email: office@stmichaels.bwmat.org		
Website: www.stmichaelsbath.org		

St. Nicholas' Church School		
Kilmersdon Road, Radstock, Bath, BA3 3QG	Status	Academy
	Age Range	4 - 11
	Admission Number	30
Telephone: 01761 432101	Co-Head Teacher – Mrs Kirsty Bliss & Mr Will Low Executive Head Teacher – Mr Joe Beament	
Email: enquiries@stnicholas.bwmat.org		
Website: www.stnicholasschool.co.uk		

St. Philip's C. of E. Primary		
Bloomfield Rise, Bath, BA2 2BN	Status	Academy
	Age Range	4 - 11
	Admission Number	40
Telephone: 01225 837946	Head Teacher – Mrs Joanne Coppens	
Email: stpmail@palladianacademytrust.com		
Website: www.stphilips-school.org		

St. Saviour's Infant Church School		
Spring Lane, Larkhall, Bath, BA1 6NY	Status	Academy
	Age Range	3 - 7
	Admission Number	60
Telephone: 01225 313928	Head Teacher – Mrs Sophie Hunt Executive Head Teacher – Mr Joe Beament	
Email: infantenquiries@stsaviours.bwmat.org		
Website: www.stsavioursbath.co.uk		

[Back to Contents Page](#)

St. Saviour's Junior Church School		
Brookleaze Place, Larkhall, Bath, BA1 6RB	Status	Academy
	Age Range	7 - 11
	Admission Number	60
Telephone: 01225 310137	Executive Head Teacher – Mr Joe Beament Acting Head Teacher – Mrs Sophie Hunt	
Email: juniorenquiries@stsaviours.bwmat.org		
Website: www.stsavioursbath.co.uk		

St. Stephen's Primary Church School		
Richmond Place, Lansdown, Bath, BA1 5PZ	Status	Academy
	Age Range	4 - 11
	Admission Number	60
Telephone: 01225 311665	Head Teacher – Miss Claire Taylor	
Email: enquiries@ststephens.bwmat.org		
Website: www.ststephensschoolbath.org		

Saltford C. of E. Primary		
Claverton Road, Saltford, Bristol, BS31 3DW	Status	Academy
	Age Range	4 - 11
	Admission Number	60
Telephone: 01225 872185	Head Teacher – Mrs Dawn Sage	
Email: enquiries@saltfordschool.org.uk		
Website: www.saltfordschool.org.uk		

Shoscombe Church School		
St Julian's Road, Shoscombe, Bath, BA2 8NB	Status	Academy
	Age Range	3 - 11
	Admission Number	15
Telephone: 01761 432479	Head Teacher – Ms Tania Rorison	
Email: office@shoscombprimary.co.uk		
Website: www.shoscombprimary.co.uk		

Somerdale Educate Together Primary		
Tiberius Road, Keynsham, Bristol, BS31 2FF	Status	Academy
	Age Range	4 - 11
	Admission Number	30
Telephone: 0117 3790888	Head Teacher – Mr Chris Thomas-Unsworth	
Email: info@somerdaleet.org.uk		
Website: www.somerdaleet.org.uk		

Stanton Drew Primary		
Upper Stanton, Stanton Drew, Bristol, BS39 4EQ	Status	Academy
	Age Range	4 – 11
	Admission Number	10
Telephone: 01275 332820	Head Teacher – Mr Tim Eustace	
Email: SDPS@bishopsuttonstantondrew.co.uk		
Website: www.bishopsuttonstantondrew.co.uk		

Swainswick Church School		
Innox Lane, Upper Swainswick, Bath, BA1 8DB	Status	Academy
	Age Range	4 - 11
	Admission Number	12
Telephone: 01225 859279	Executive Head Teacher – Mrs Naomi Boyce Head of School – Mr Jonathan Hall	
Email: enquiries@swainswick.bwmat.org		
Website: www.swainswickschool.co.uk		

[Back to Contents Page](#)

Trinity Church School		
Woodborough Lane, Radstock, Bath, BA3 3DE	Status	Academy
	Age Range	2 - 11
	Admission Number	30
Telephone: 01761 438650	Head Teacher – Mrs Michelle Parsons	
Email: office@trinitychurchschool.com		
Website: www.trinitychurchschool.com		

Twerton Infant		
Poolemead Road, Twerton, Bath, BA2 1QR	Status	Community
	Age Range	2 - 7
	Admission Number	60
Telephone: 01225 423526	Head Teacher – Mr George Samios	
Email: twerton_inf@bathnes.gov.uk		
Website: www.twertoninfant.school/		

Two Rivers CE Primary		
35 Fairfield Way, Keynsham, Bristol, BS31 1GE	Status	Academy
	Age Range	4 - 11
	Admission Number	60
Telephone: 0117 9161027	Head Teacher – Mr Matt Filer	
Email: enquiries@tworiversschool.org.uk		
Website: www.tworiversschool.org.uk		

Ubley C. of E. Primary		
The Street, Ubley, Bristol, BS40 6PJ	Status	Academy
	Age Range	4 - 11
	Admission Number	15
Telephone: 01761 462654	Head Teacher – Mr Ian Harvey	
Email: office@ubley.school		
Website: www.eastharpreeandubley.org.uk		

Welton Primary		
Radstock Road, Midsomer Norton, Bath, BA3 2AG	Status	Academy
	Age Range	2 - 11
	Admission Number	28
Telephone: 01761 413131	Executive Head Teacher – Mr John Snell Head of School – Mr Phil Lyle	
Email: office@weltonprimaryschool.co.uk		
Website: www.weltonprimaryschool.co.uk		

Westfield Primary		
Longfellow Road, Radstock, Bath, BA3 3XX	Status	Academy
	Age Range	2 - 11
	Admission Number	60
Telephone: 01761 413662	Head Teacher – Mr Simon Mills	
Email: office@westfieldprimary.com		
Website: www.westfieldprimary.com		

Weston All Saints C. of E. Primary		
Broadmoor Lane, Weston, Bath, BA1 4JR	Status	Academy
	Age Range	4 - 11
	Admission Number	90
Telephone: 01225 421786	Head Teacher – Mr Matthew Norcott	
Email: hello@wasp-school.org.uk		
Website: www.wasp-school.org.uk		

[Back to Contents Page](#)

Whitchurch Primary		
Bristol Road, Whitchurch, Bristol, BS14 0PQ	Status	Academy
	Age Range	4 - 11
	Admission Number	45
Telephone: 01275 833593	Head Teacher – Mr Carl Hornsby	
Email: office@whitchurchprimary.co.uk		
Website: www.whitchurchprimary.co.uk		

Widcombe Infant		
Archway Street, Bath, BA2 4JG	Status	Academy
	Age Range	4 - 7
	Admission Number	60
Telephone: 01225 421998	Head Teacher – Miss Alison Watts	
Email: widcombeinfants@palladianacademytrust.com		
Website: www.widcombeinfantschool.co.uk		

Widcombe C. of E. Junior		
Pulteney Road, Bath, BA2 4JG	Status	Academy
	Age Range	7 - 11
	Admission Number	60
Telephone: 01225 310139	Executive Head Teacher – Mrs Becky Wilson Head of School – Mr Aaron Harley	
Email: WJS-office@palladianacademytrust.com		
Website: www.widcombejuniorschool.com/		

[Back to Contents Page](#)

Mainstream schools with Resource Bases for Primary Age children

St. Martins Garden Primary		
Margaret Coates Centre For pupils with Autism	Age Range	4 - 11
Midsomer Norton Primary		
For pupils with Specific Learning Difficulty	Age Range	4 - 11
St. Nicholas Church School		
For pupils with Social, Emotional & Mental Health Difficulties	Age Range	4 - 11
Peasedown St. John Primary		
For pupils with Autism	Age Range	4 - 11
Weston All Saints C. of E. Primary		
For pupils with a Hearing Impairment	Age Range	4 - 11

Special Schools for Primary Age Children

North Star⁰		
Frome Road, Odd Down, Bath, BA2 5RF	Status	Academy
	Age Range	4 - 16
Telephone: 01225 832212	Head Teacher – Ms Helen McDicken	
Email: NorthStar180@northstar-academy.co.uk		
Website: ns180.northstar-academy.co.uk		
For pupils with Social, Emotional & Mental Health Difficulties and Autistic Spectrum Condition and Complex Needs		
Fosse Way School		
Longfellow Road, Midsomer Norton, Bath, BA3 4BL	Status	Academy
	Age Range	3 - 19
Telephone: 01761 412198	Head Teacher – Ms Fiona Skinner	
Email: office@fossewayschool.com		
Website: www.fossewayschool.co.uk		
For Pupils with complex learning difficulties		
Three Ways School		
180 Frome Road, Odd Down, Bath, BA2 5RF	Status	Academy
	Age Range	4 - 19
Telephone: 01225 838 070	Head Teacher – Ms Jo Stoaling	
Email: enquiries@threeways.co.uk		
Website: www.threeways.co.uk		
For pupils with complex learning difficulties		

The Local Authority commission places in negotiation with the schools on an annual basis

[Back to Contents Page](#)

A Primary School for your Child

In Bath and North East Somerset
2025/2026