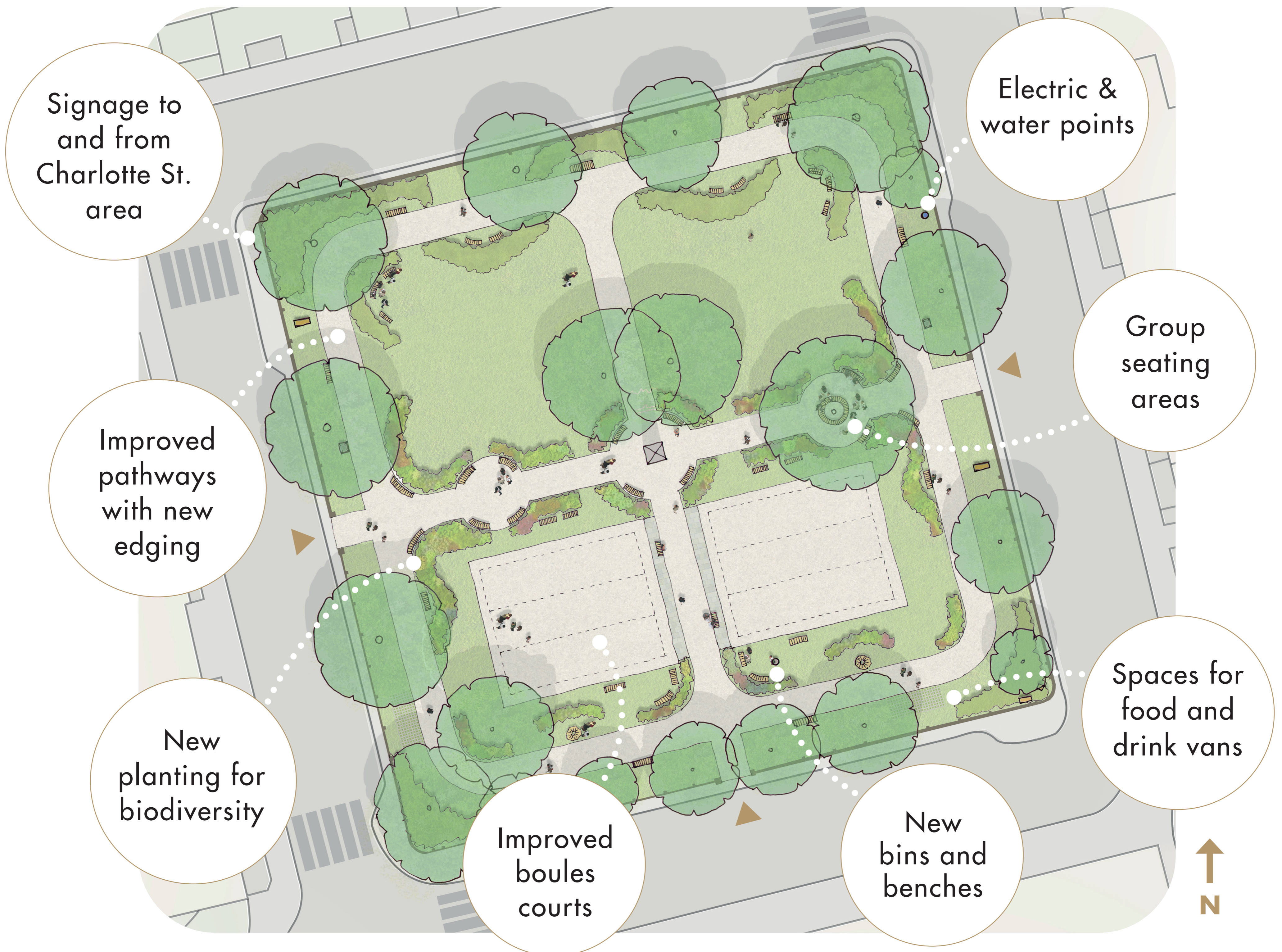


QUEEN SQUARE

A testament to community spirit and the cultural enrichment taking place within the city.

'Welcome to Bath' website

This design enhances this historic setting for the community by increasing planting and biodiversity as well as providing more seating and usable spaces for activities and events.



What it could look and feel like...

**What do you think?
Tell us here...**



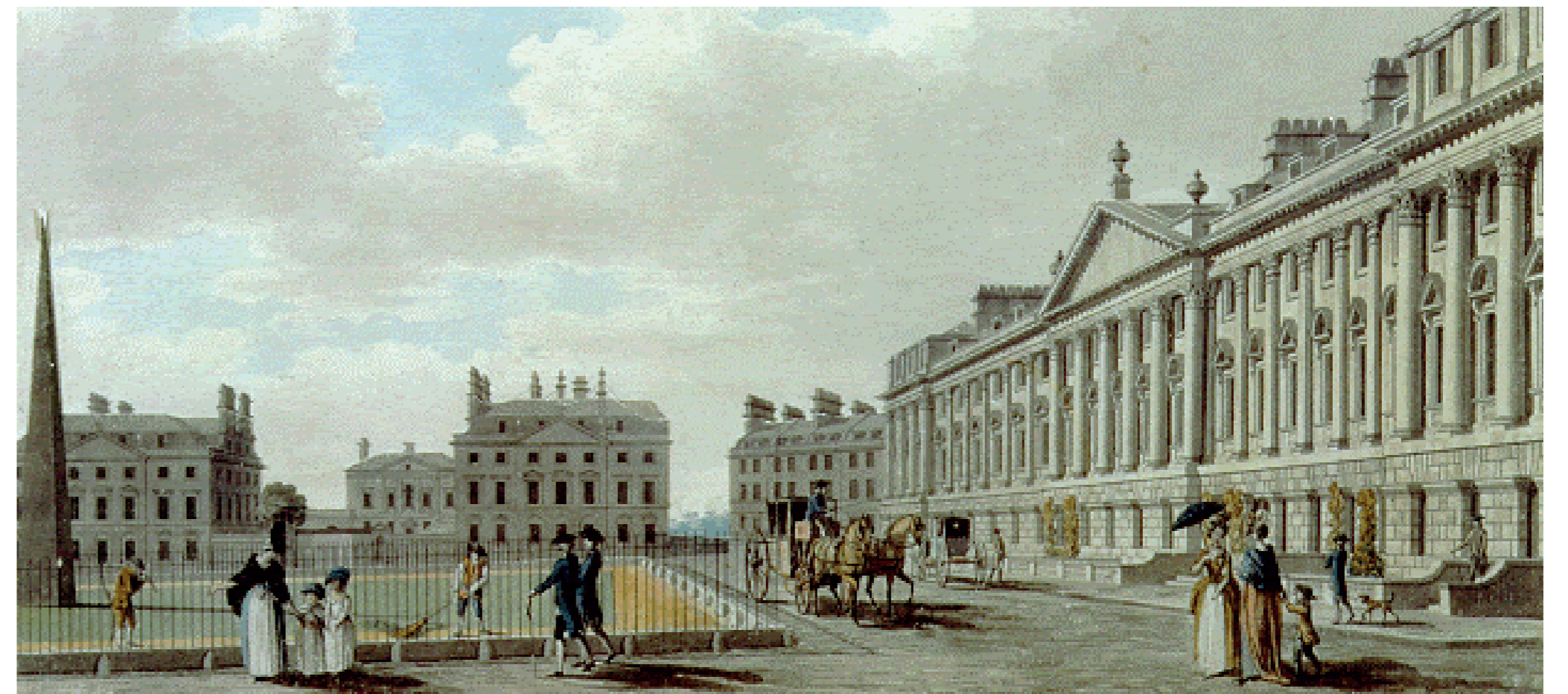
QUEEN SQUARE

The intention of a square in a city is for people to assemble together.

John Wood the Elder - Architect

Queen Square is a prominent Georgian square with architectural significance in the heart of Bath, making it a vital part of the city's cultural heritage and urban fabric.

Following the introduction of the Clean Air Zone (CAZ) in Bath, additional funding was made available to support schemes within the city that support the aims of the Clean Air Plan. One area that funding was secured for included enhancement to the public realm in and around Queen Square.



The design proposals have been developed and informed through extensive site analysis and stakeholder engagement. The groups included talking with local residents and businesses, users of the square and council officers to consider heritage, transport, parks, events and utilities.

The **objectives** of the Queen Square Public Realm project are:

- To create an improved place at the historic site of Queen Square, supporting recreation, events and cleaner air.
- To improve access to Queen Square, particularly from the Charlotte Street area.
- To recreate a pleasant, peaceful surrounding in which to meet and relax.

The project aims to respect the historical significance of Queen Square while making it more useful for today's needs.

