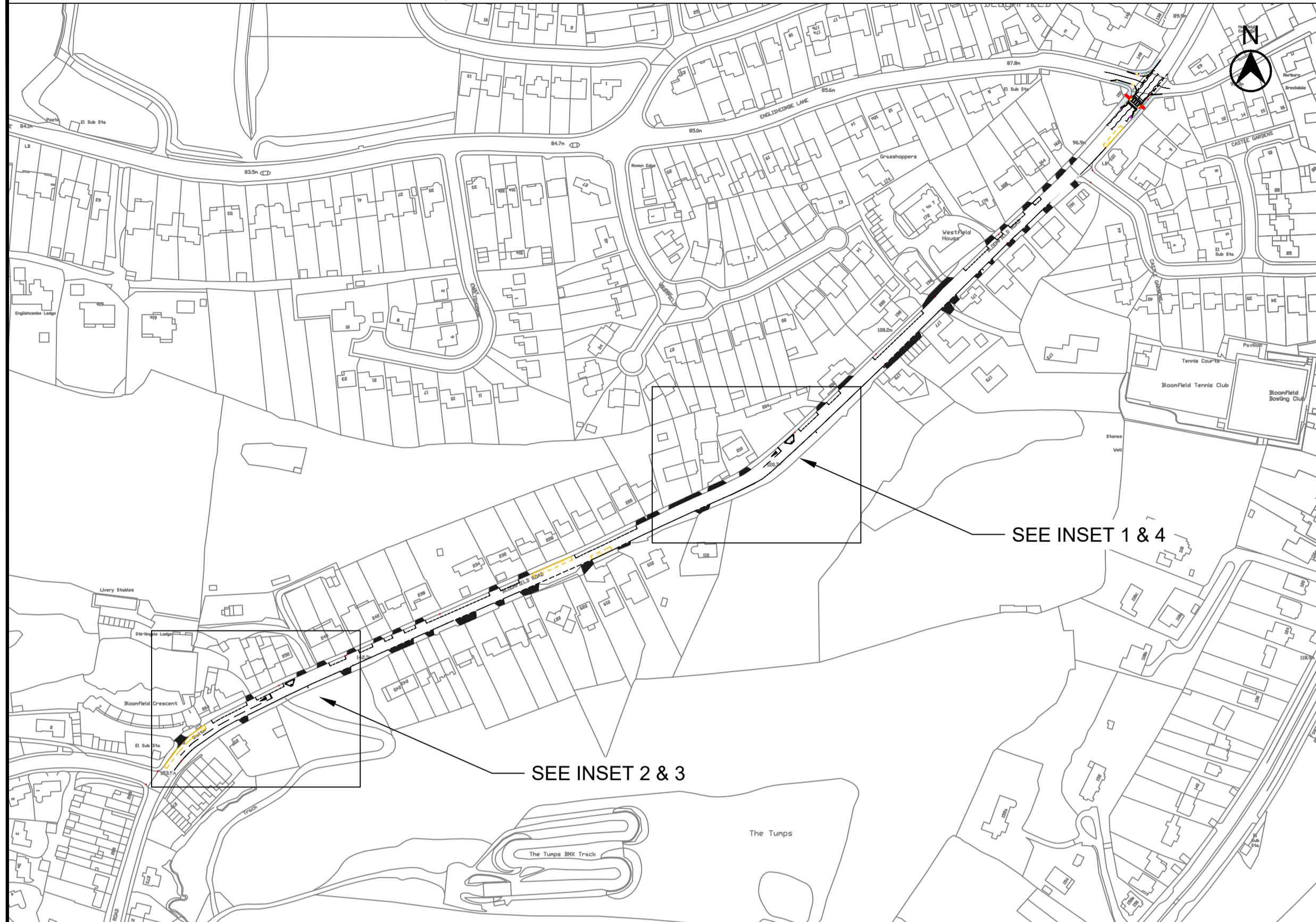
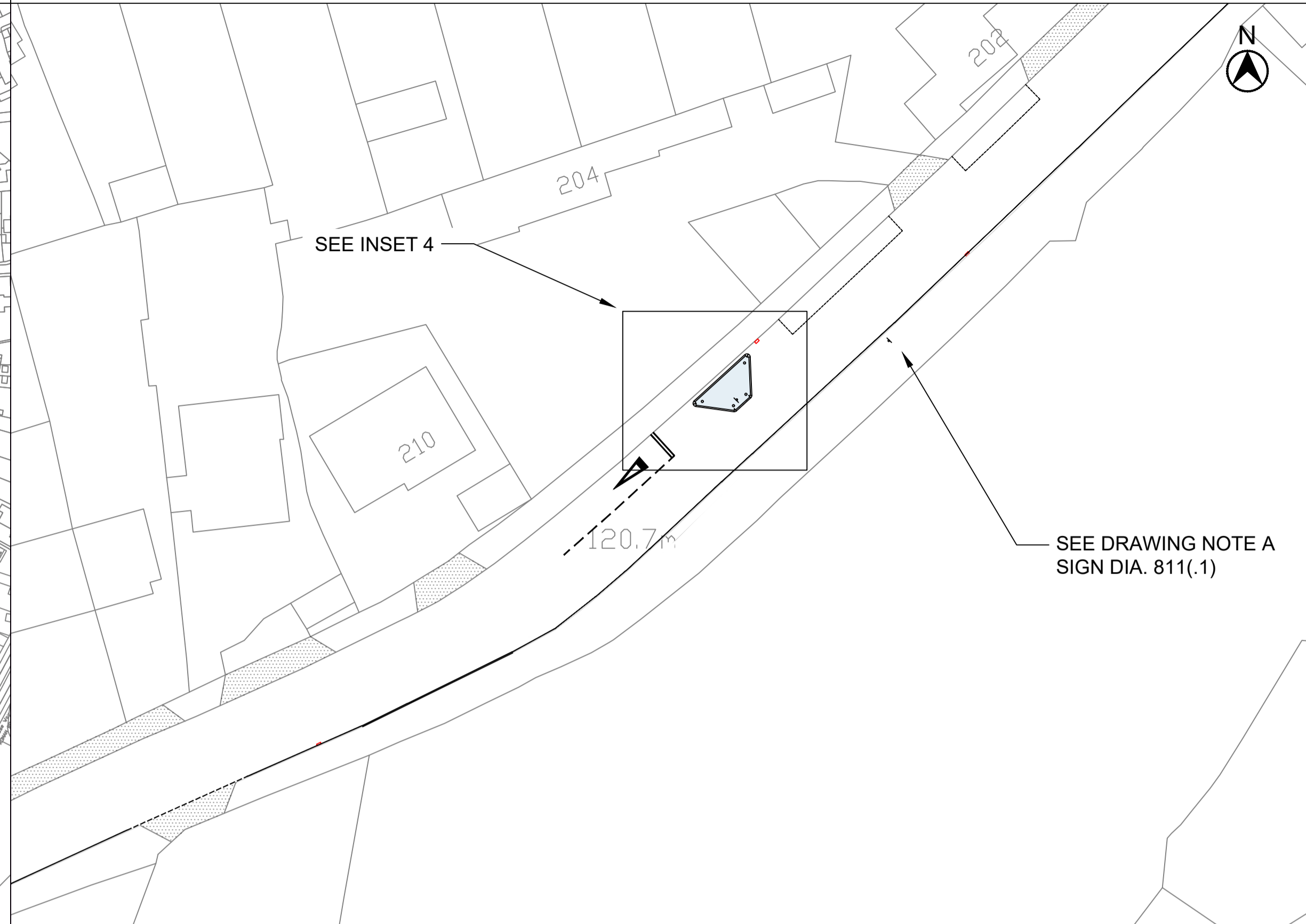


**BLOOMFIELD ROAD (WIDER CONTEXT)**



**INSET 1: BUILD OUT EAST OF 210 BLOOMFIELD ROAD**

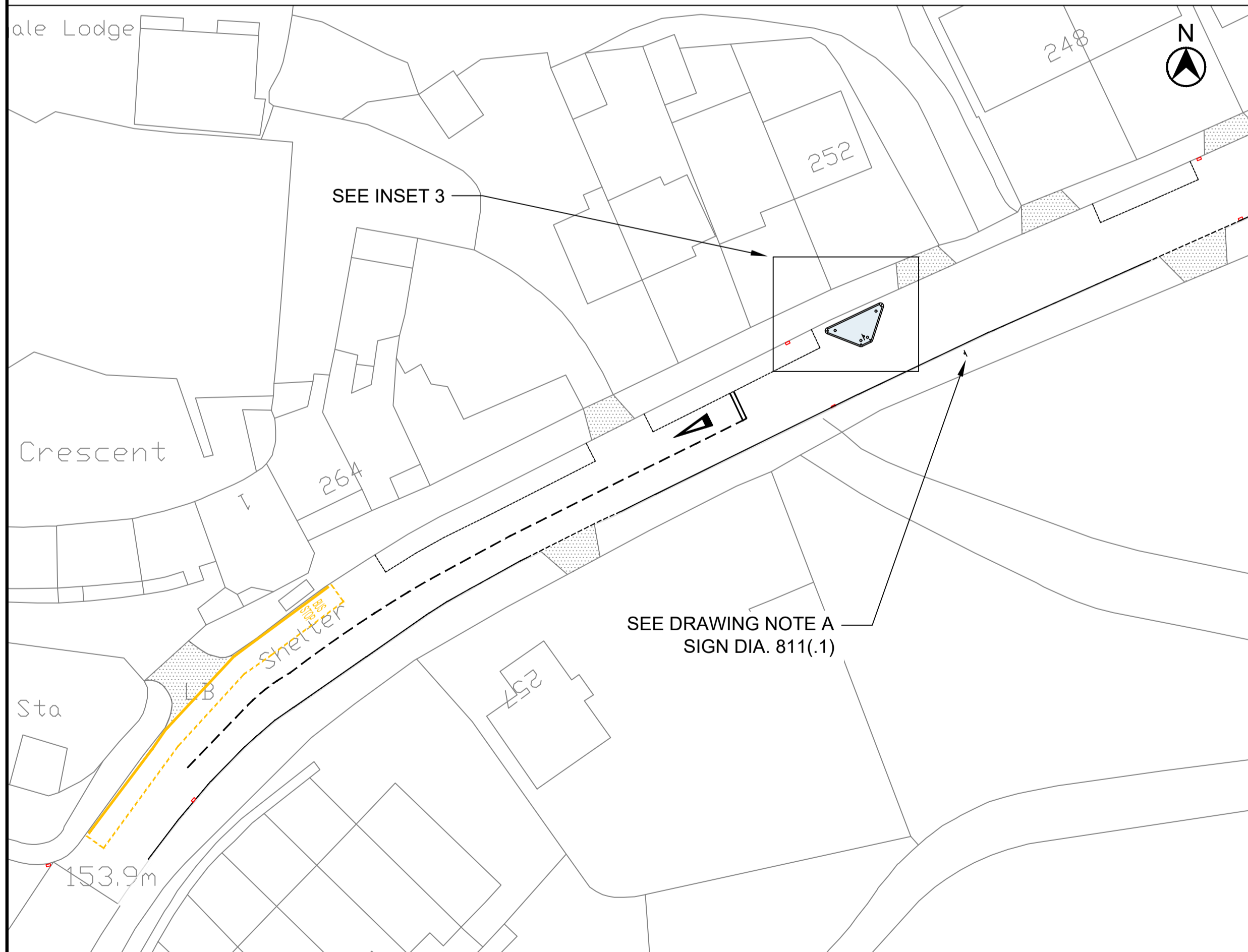


- KEY:**
- PROPOSED FOOTWAY WIDENING/RESURFACING  
AC20 DENSE BIN 100/150 REC BINDER COURSE 50mm THICK. AC20 REGULATING TO CREATE NEW FOOTWAY OVER EXISTING CARRIAGEWAY. AC6 DENSE SURF 100/150 SURFACE COURSE 20mm THICK (≈25m<sup>2</sup>)
  - PROPOSED PRE-CAST CONCRETE TYPE HB2 KERB (≈25m)
  - APPROXIMATE LOCATION OF BLOOMFIELD ROAD DRIVEWAY ACCESSSES
  - NEW CAST IRON MANCHESTER STYLE BOLLARD WITH REFLECTIVE BANDING (x8)

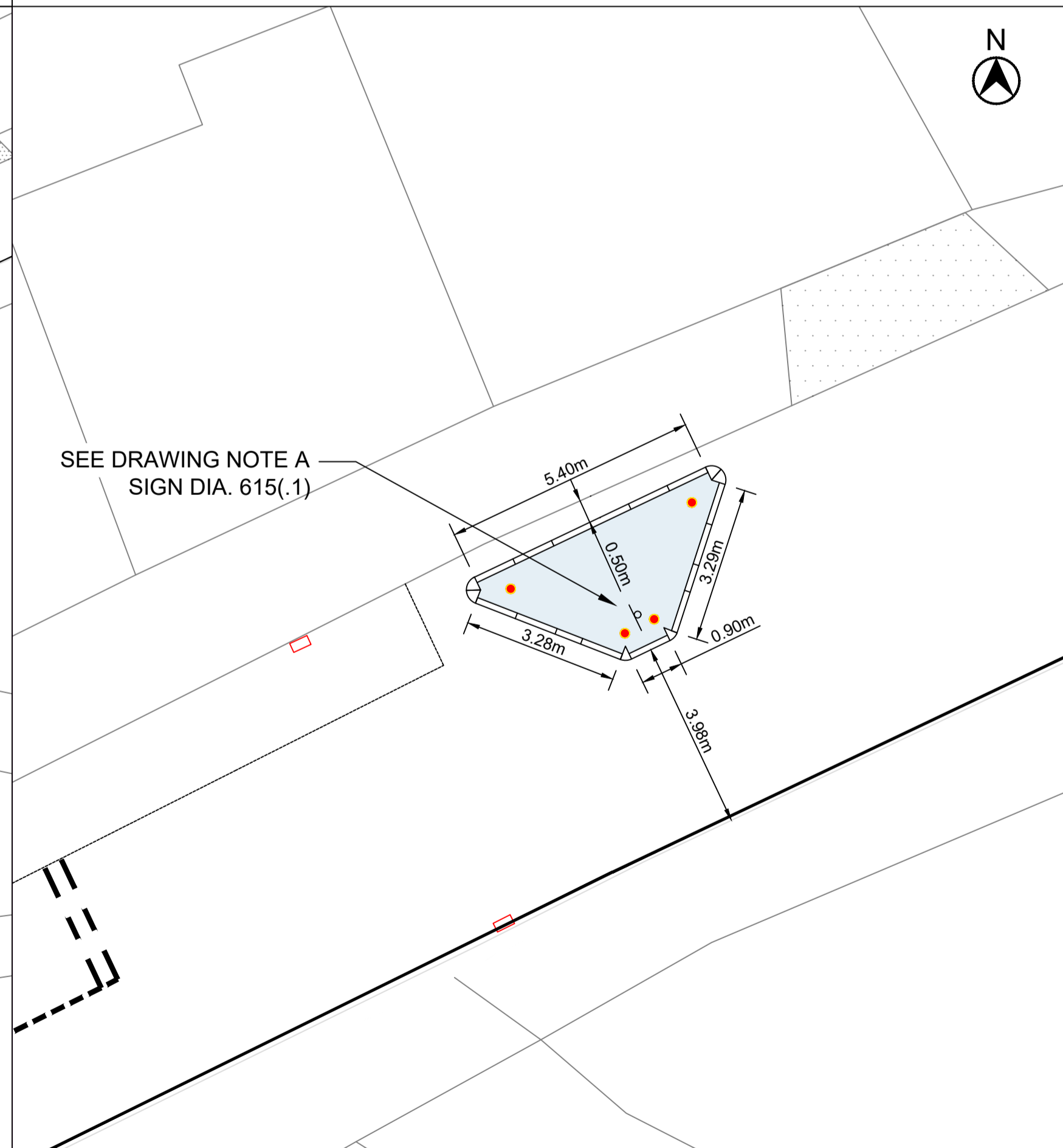
- DRAWING NOTE A. SIGN DETAILS**
- SIGN DIA. 615(.1)**  
CIRCULAR SIGN TO DIA. 615 (ON YELLOW BACKING), INCLUDING SUPPLEMENTARY PLATE 615.1 "GIVE WAY TO ONCOMING VEHICLES". MOUNTED ON NEW POST WITHIN BUILDOUT. INSTALLED AT A HEIGHT ≥ 2100mm. SET BACK 450mm FROM EDGE OF CARRIAGEWAY. (x2)
  - SIGN DIA. 811(.1)**  
RECTANGULAR SIGN TO DIA. 615 (ON YELLOW BACKING), INCLUDING SUPPLEMENTARY PLATE 811.1 "PRIORITY OVER ONCOMING VEHICLES". MOUNTED ON NEW POST WITHIN VERGE. INSTALLED AT A HEIGHT ≥ 2100mm. SET BACK 450mm FROM EDGE OF CARRIAGEWAY. (x2)

**PLEASE NOTE: DESIGNS AND SPECIFIC LOCATIONS PRESENTED WITHIN THIS PLAN ARE FOR REFERENCE ONLY. SOME ADJUSTMENTS MAY BE REQUIRED FOLLOWING COMMENTS RECEIVED DURING PUBLIC CONSULTATIONS, RECOMMENDATIONS PROVIDED BY SUBSEQUENT ROAD SAFETY AUDITS, AND/OR DURING THE DETAILED DESIGN PHASE.**

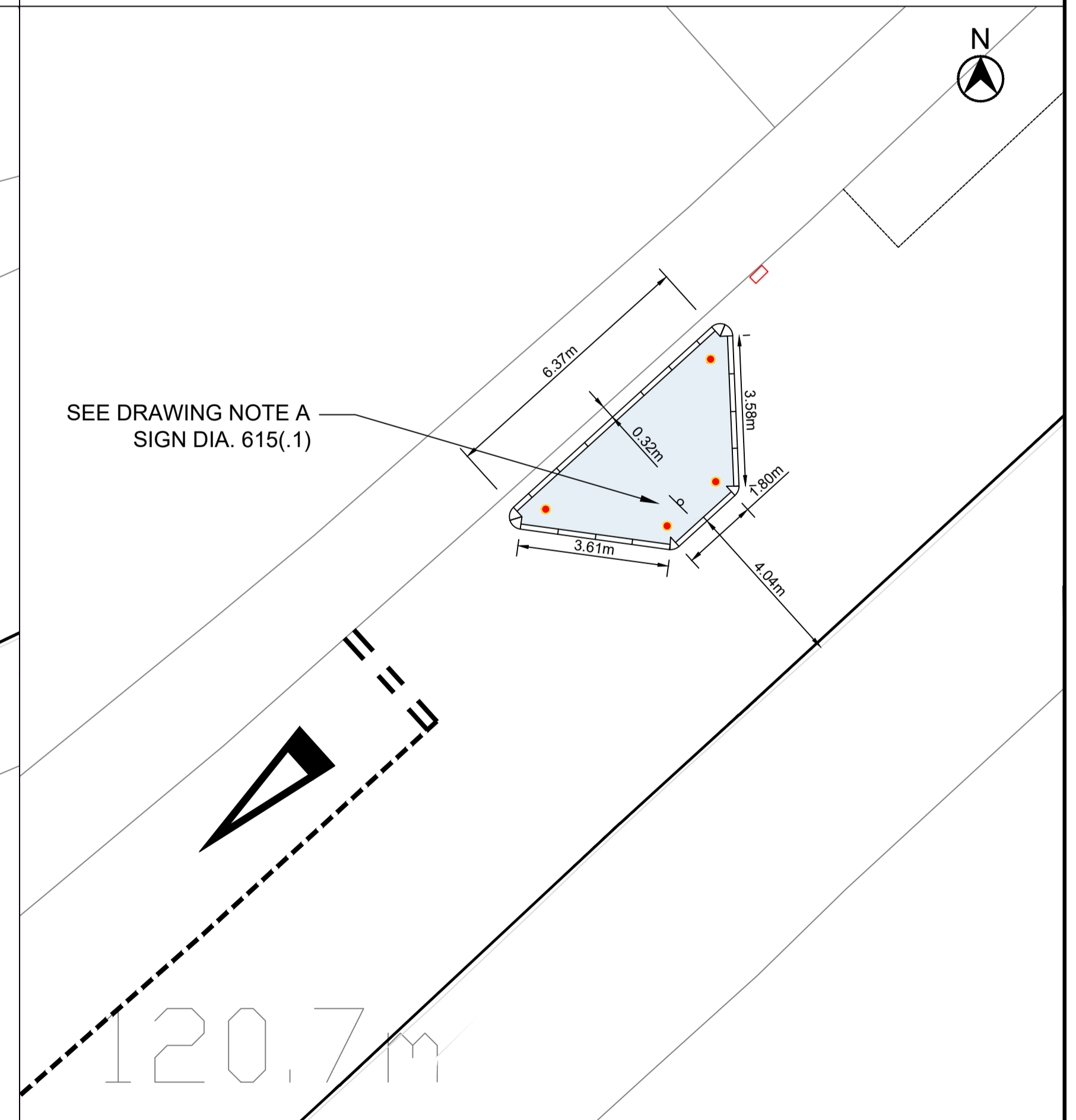
**INSET 2: BUILD OUT AT 252 BLOOMFIELD ROAD**



**INSET 3: BUILD OUT AT 252 BLOOMFIELD ROAD (DETAILS)**



**INSET 4: BUILD OUT EAST OF 210 BLOOMFIELD ROAD (DETAILS)**



**Bath & North Somerset Council**  
CHRIS MAJOR  
DIRECTOR OF PLACE MANAGEMENT  
ENVIRONMENTAL SERVICES

PRODUCED BY  
**TRAFFIC MANAGEMENT**

SCHEME TITLE  
**BLOOMFIELD ROAD BATH**

DRAWING TITLE  
**BLOOMFIELD ROAD DRAFT PARKING BUILDOUTS GENERAL ARRANGEMENT PLAN**

**ISSUED FOR INFORMATION**

REV.	DATE	REVISIONS	DRWN.	CHKD.	APPROV.

DATE	SEPT 24	DRAWN BY	TJS	APPROVED BY	
SCALE	NTS	CHECKED	TJS		
CLIENT REF.	<b>BATH&amp;NES</b>				
DRAWING No.	TCN0028.04.3.GA				REV. -