

Hayesfield Girls School Spotlight Report

Hayesfield Girls School Spotlight

Key facts	2
Profile	2
Inspection ratings	3
Attainment at Key Stage 4.....	3
Attainment at 'A' level and equivalent.....	4
Progress made from Key Stage 2 to Key Stage 4 ("value added").....	5
Attendance and absence.....	7
School contact details	8
Sources and notes	8

Key facts

Gender:	Girls
Age range:	11-18
Number on roll:	1124
Planned admissions number 2012/13:	180
Type of school:	Secondary Academy
Religious character:	None
Specialist type:	Technology

Profile

The text here is from the school's website:

At Hayesfield we place great importance on collaboration between staff, students and parents as we work together to support the girls in reaching their full potential.

Hayesfield Girls' School is recognised by OfSTED as an 'Outstanding' School. Examination results continue to be excellent at Key Stage 3 and 4 and our Sixth Form results are well above National Averages. This success is attributed to our focus on the quality of learning and we pride ourselves in an innovative approach to teaching and learning. Our students therefore benefit from being educated by a highly talented, reflective, dedicated and caring team of professionals.

At Hayesfield we value a true sense of belonging and our students participate in a variety of activities and events. Such activities are geared towards building on current talents whilst encouraging an exploration of new interests and intellectual pursuits.

There is a strong belief in traditional values at Hayesfield; we set high standards in our work, conduct and appearance. We place an emphasis on developing the skills and values that will enable our students to become thinking, informed and confident women who will be able to meet the challenges of the 21st century. The school provides a warm, friendly and supportive environment where girls learn together in an atmosphere of co-operation and trust.

Without doubt, being a student at Hayesfield Girls' School is demanding and challenging. Ultimately though, students find it a truly enjoyable, rewarding and stimulating experience. Hayesfield is a thriving, vibrant community in which girls feel safe, valued and happy.

Inspection ratings

The school was inspected by Ofsted on February 11th 2009. The report is available on Ofsted's website here:

<http://www.ofsted.gov.uk/inspection-reports/find-inspection-report/provider/ELS/109292>

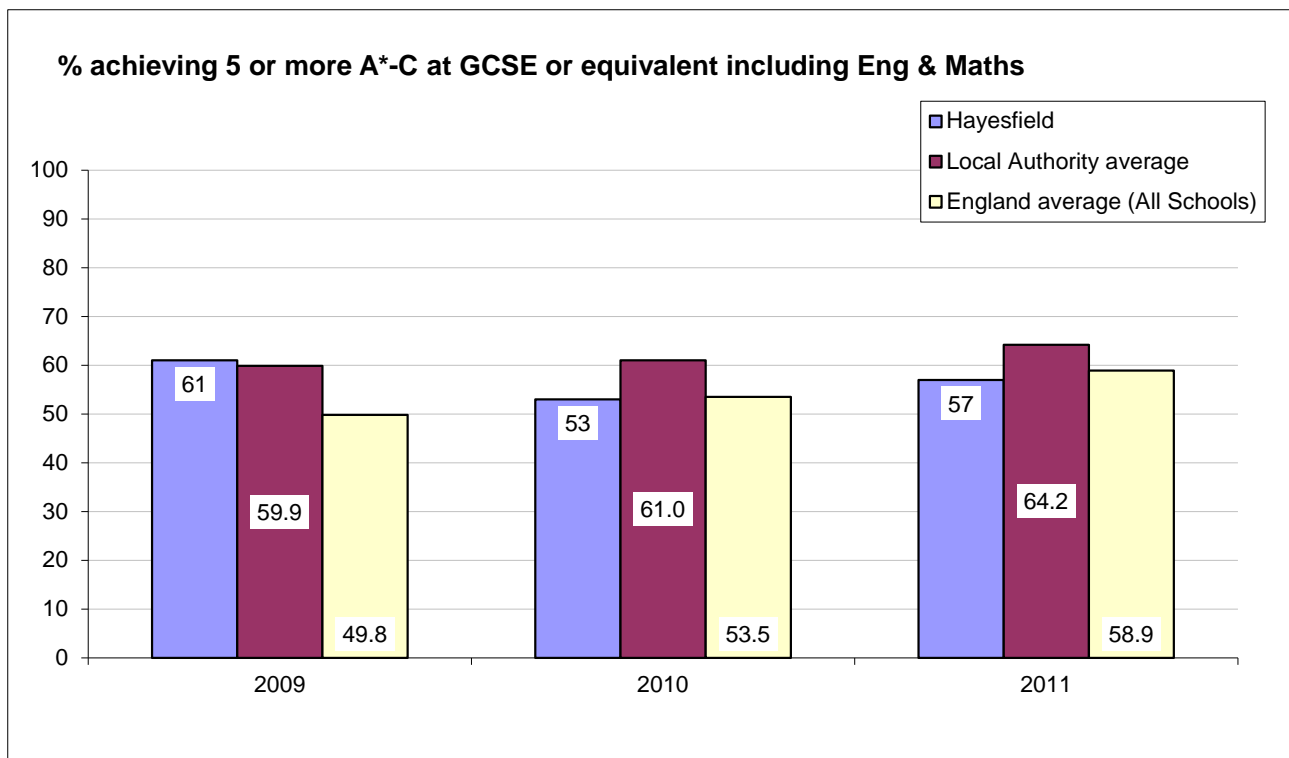
Scores relating to the following are as follows:

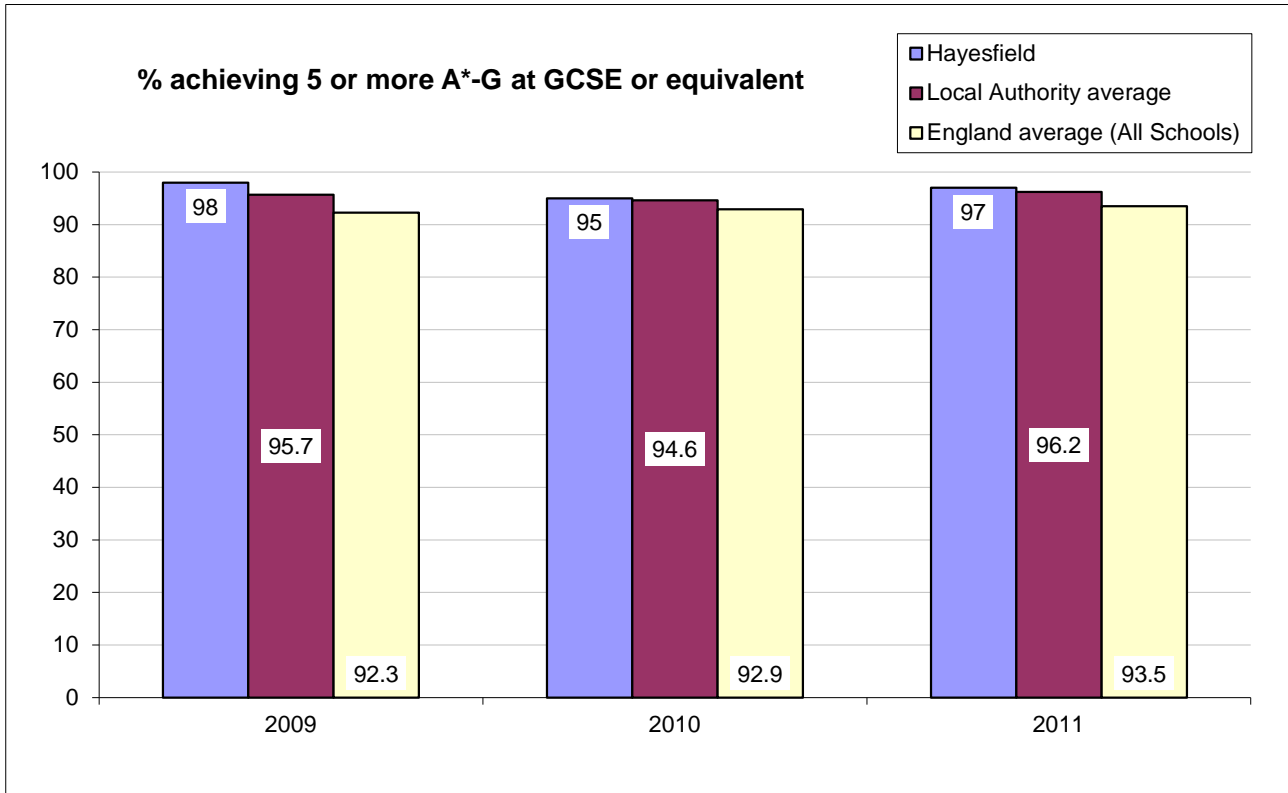
Overall effectiveness	1
Capacity to improve	1
Outcomes / achievement	1
Leadership and management	1

Inspection grades: 1 is outstanding, 2 is good, 3 is satisfactory, 4 is inadequate.

Attainment at Key Stage 4

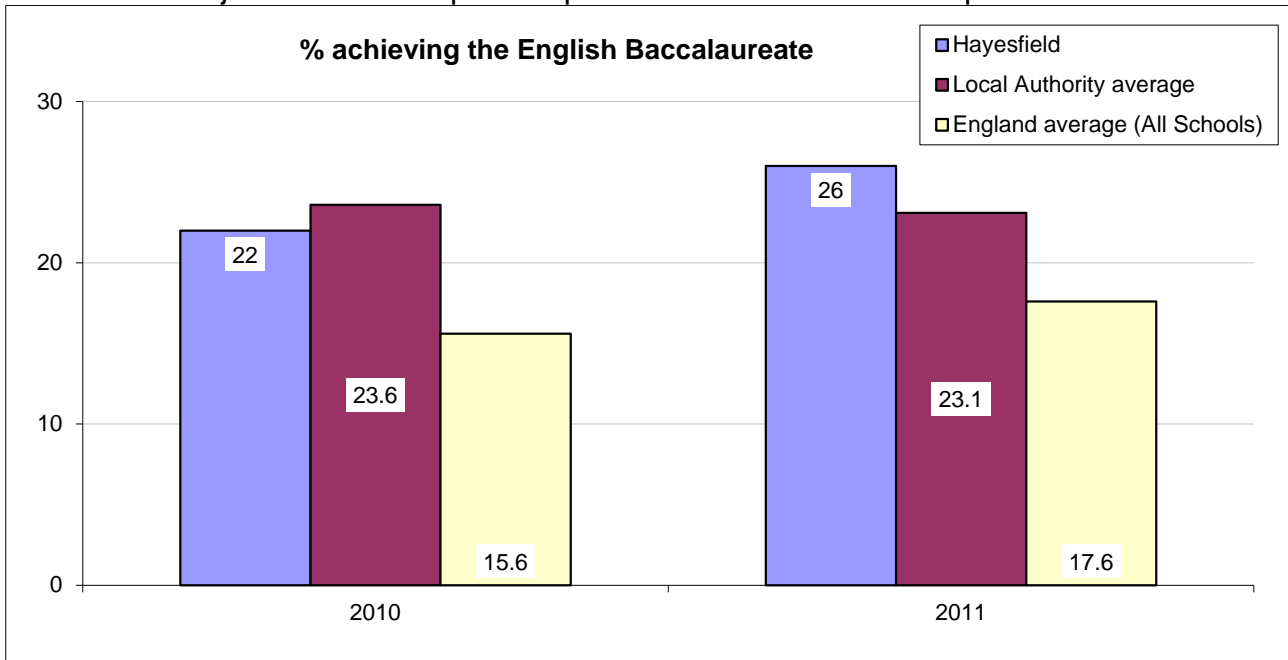
Key Stage 4 covers two years of education, Year 10 and Year 11, when pupils are aged between 14 and 16.





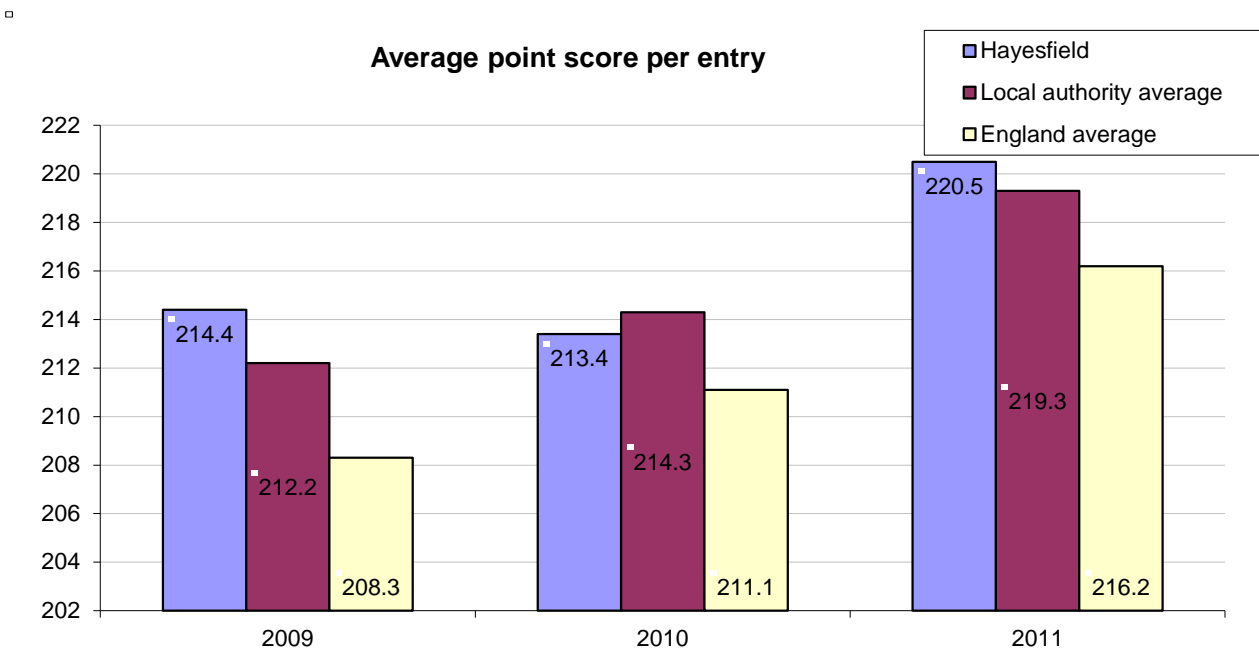
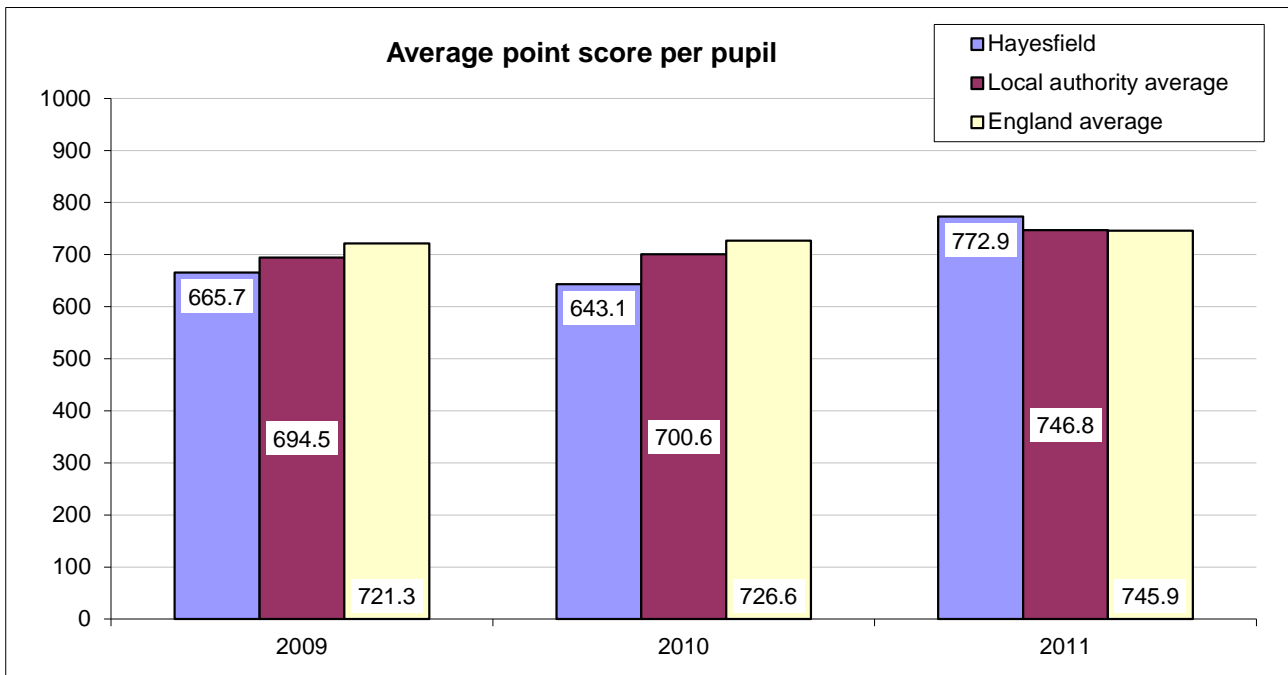
Percentage achieving the English Baccalaureate

The English Baccalaureate indicator shows the percentage of pupils at the end of Key Stage 4 achieving GCSEs/iGCSEs at grades A*-C in English, mathematics, sciences, a language and a humanities subject. Results for periods prior to 2010 have not been published.



Data sources and further notes can be found in the last section below.

Attainment at 'A' level and equivalent

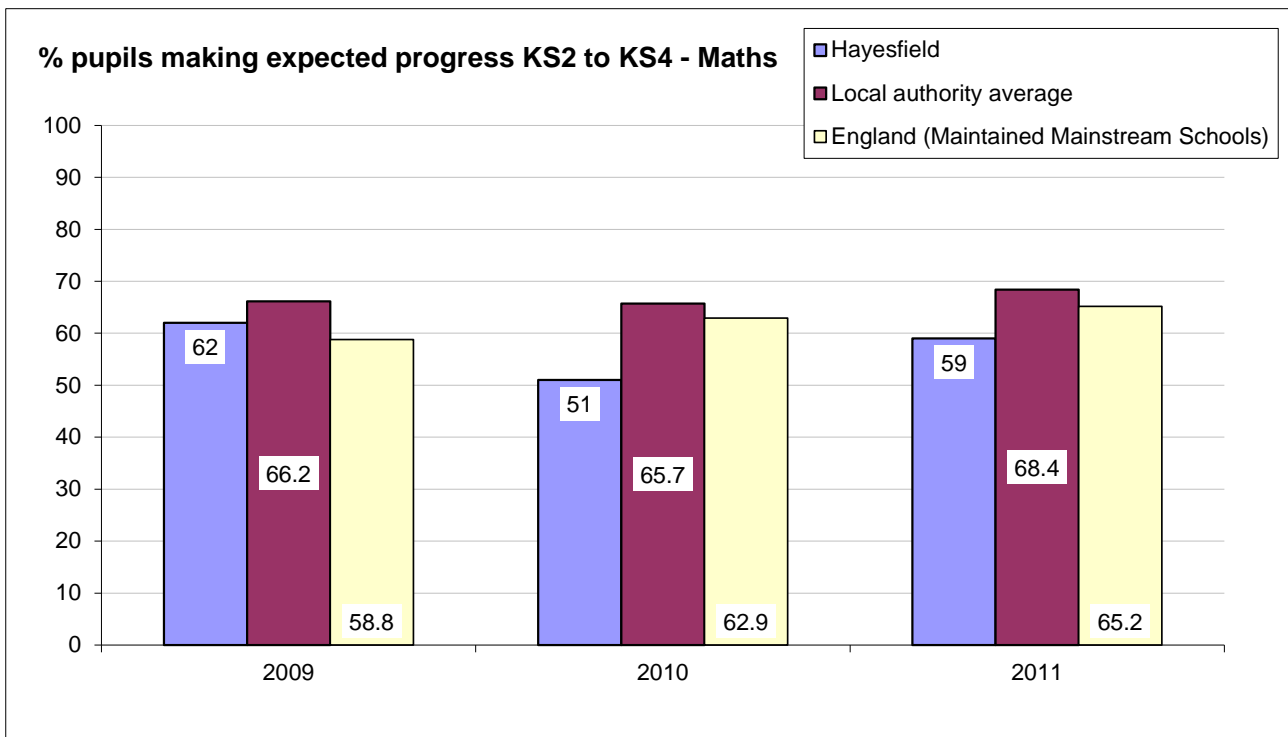
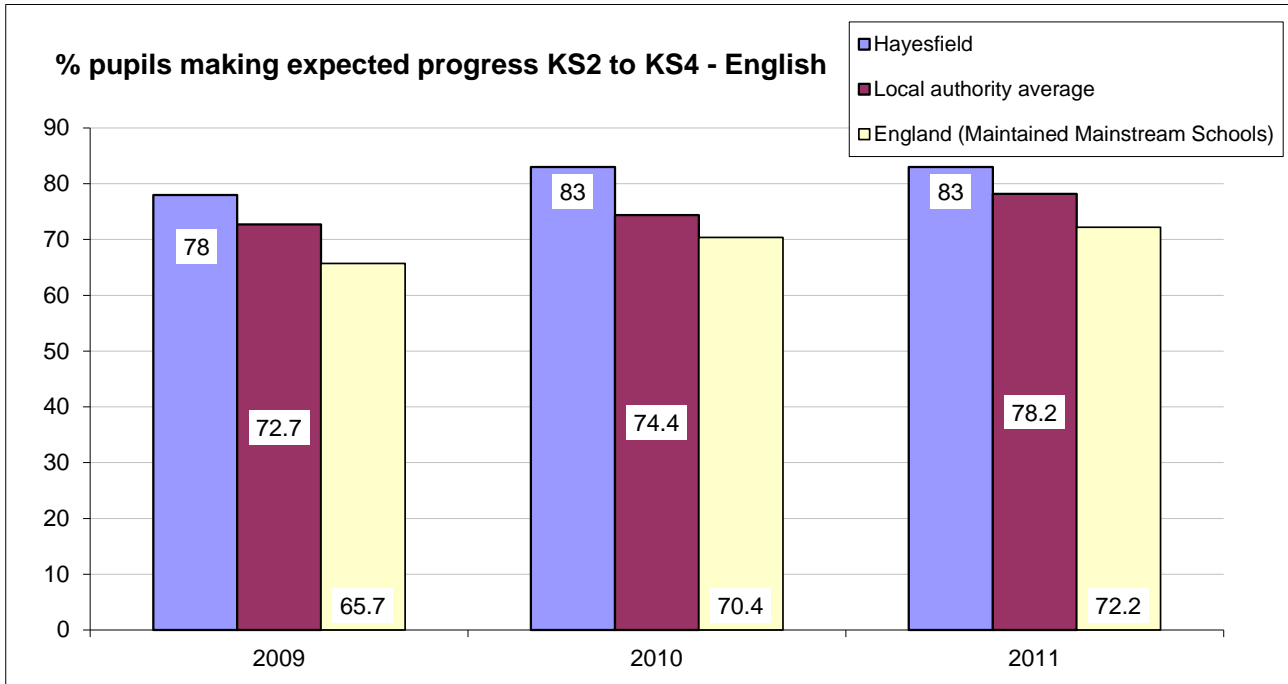


Data sources and further notes can be found in the last section below.

Progress made from Key Stage 2 to Key Stage 4 (“value added”)

This measures progress made between pupils’ attainment at the end of Key Stage 2 (Year 6, when pupils are 11) and the end of Key Stage 4 (Year 11, when pupils are aged 16).

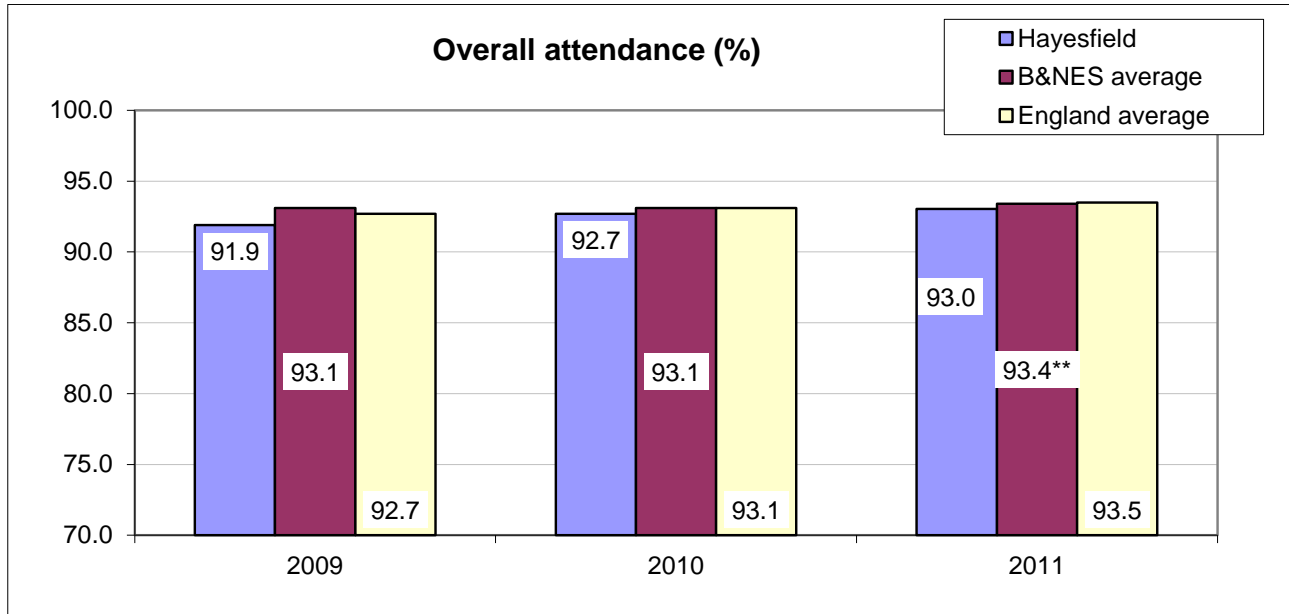
Percentage making the nationally expected 3 levels progress



Data sources and further notes can be found in the last section below.

Attendance and absence

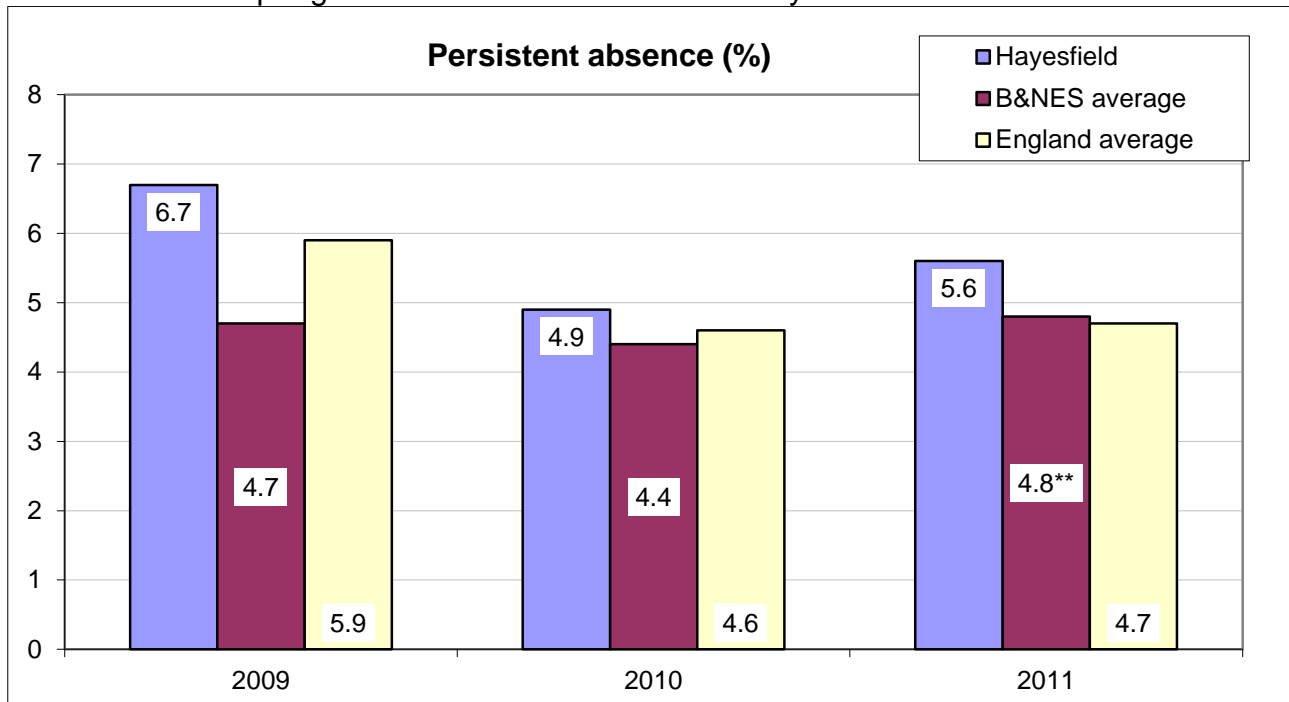
Overall attendance



** The B&NES 2011 figure is not published, so this has been calculated by averaging the individual schools overall attendance figure

Persistent absence

Persistent absence is the percentage of pupil enrolments equalling or exceeding the threshold number of half-day absences (set to equal 20% of the national average number of possible half-day sessions) over the Autumn and Spring terms combined. The persistent absence threshold for Autumn and Spring 2008/09 was 52 or more half-day sessions.



School contact details

Head teacher: Ms Erica Draisey
Chair of Governors: Dr Colin McInnes

Hayesfield School
Upper Oldfield Park,
Brougham Hayes
Bath, BA2 3LA
Telephone: 01225 426151
Fax: 01225 427005
Email: information@hayesfield.com
Website: www.e-hayesfield.com

Sources and notes

Because each year group is made up of different pupils, with different prior attainment and other characteristics, results may fluctuate from year to year for reasons to do with the pupils rather than the school. Small fluctuations from year to year are unlikely to be significant, particularly if the school's year group is small.

Notes on Key facts

The **planned admissions number 2012/13** comes from the school admissions booklet for 2012/13, which can be found at the following link:
www.bathnes.gov.uk/SecondaryAdmissions2012-2013

Other data in this section is sourced from the Ofsted website, Spring 2011 and from Edubase2:
www.edubase.gov.uk

Notes on Attainment at Key Stage 4 for all pupils

Source: Department for Education – School and college performance tables
www.education.gov.uk/performance-tables/

England averages are for local authority maintained schools only.

Notes for results for pupils at the end of Key Stage 4 (2009):
www.education.gov.uk/performance-tables/schools_09/s5.shtml

Notes on attainment at 'A' level and equivalent

Average points per entry and average points per pupil are taken from the Department for Education - School and college performance tables.

Local authority averages are the averages for local authority maintained schools. There are different figures published nationally, which can include other schools and colleges.

England average figures are taken from the School and college performance tables. These figures exclude independent schools except for in 2007 when the figure is just listed as "England Average".

Notes on percentage making the expected progress between Key Stage 2 and Key Stage 4

Source: Department for Education – School and college performance tables

www.education.gov.uk/performance/tables/

Local authority average figures are not provided in the performance tables so are calculated as the average of the figures for the local authority's schools.

National figures are not provided.

Notes for Key Stage 2 to 4 progress measures (2009):

www.education.gov.uk/performance/tables/schools_09/s11.shtml

Notes on attendance

The percentage attendance figures are based on the overall absence figures published in the Department for Education – School and college performance tables. Taking 100% as the starting point and subtracting the overall absence.

The overall absence is calculated as the percentage of possible half-days absent.

The England figures are those listed as follows:

2011 - secondary state-funded

2010 – state funded schools

2009 – maintained schools only

2008 – listed as “England average”

Notes on persistent absence

Source: Department for Education – School and college performance tables.

Maintained mainstream schools only.

www.education.gov.uk/performance/tables/

Notes for absence records (2009):

www.education.gov.uk/performance/tables/schools_09/s6.shtml